

District I
1625 N. French Dr., Hobbs, NM 88240
Phone: (575) 393-6161 Fax: (575) 393-0720
District II
811 S. First St., Artesia, NM 88210
Phone: (575) 748-1283 Fax: (575) 748-9720
District III
1000 Rio Brazos Road, Aztec, NM 87410
Phone: (505) 334-6178 Fax: (505) 334-6170
District IV
1220 S. St. Francis Dr., Santa Fe, NM 87505
Phone: (505) 476-3460 Fax: (505) 476-3462

State of New Mexico
Energy, Minerals & Natural Resources Department
OIL CONSERVATION DIVISION
1220 South St. Francis Dr. Santa Fe, NM 87505
NOV 02 2014

Form C-102
Revised August 1, 2011
Submit one copy to appropriate
District Office
☐ AMENDED REPORT

RECEIVED

RECEIVED

WELL LOCATION AND ACREAGE DEDICATION PLAT

¹ API Number 30025-42220	² Pool Code 17644	³ Pool Name Diamond tail; Bone Spring/ Wildcat
⁴ Property Code 313792	⁵ Property Name COLIBRI FEDERAL	⁶ Well Number #24H
⁷ OGRID No. 215099	⁸ Operator Name CIMAREX ENERGY CO.	⁹ Elevation 3711'

¹⁰ Surface Location

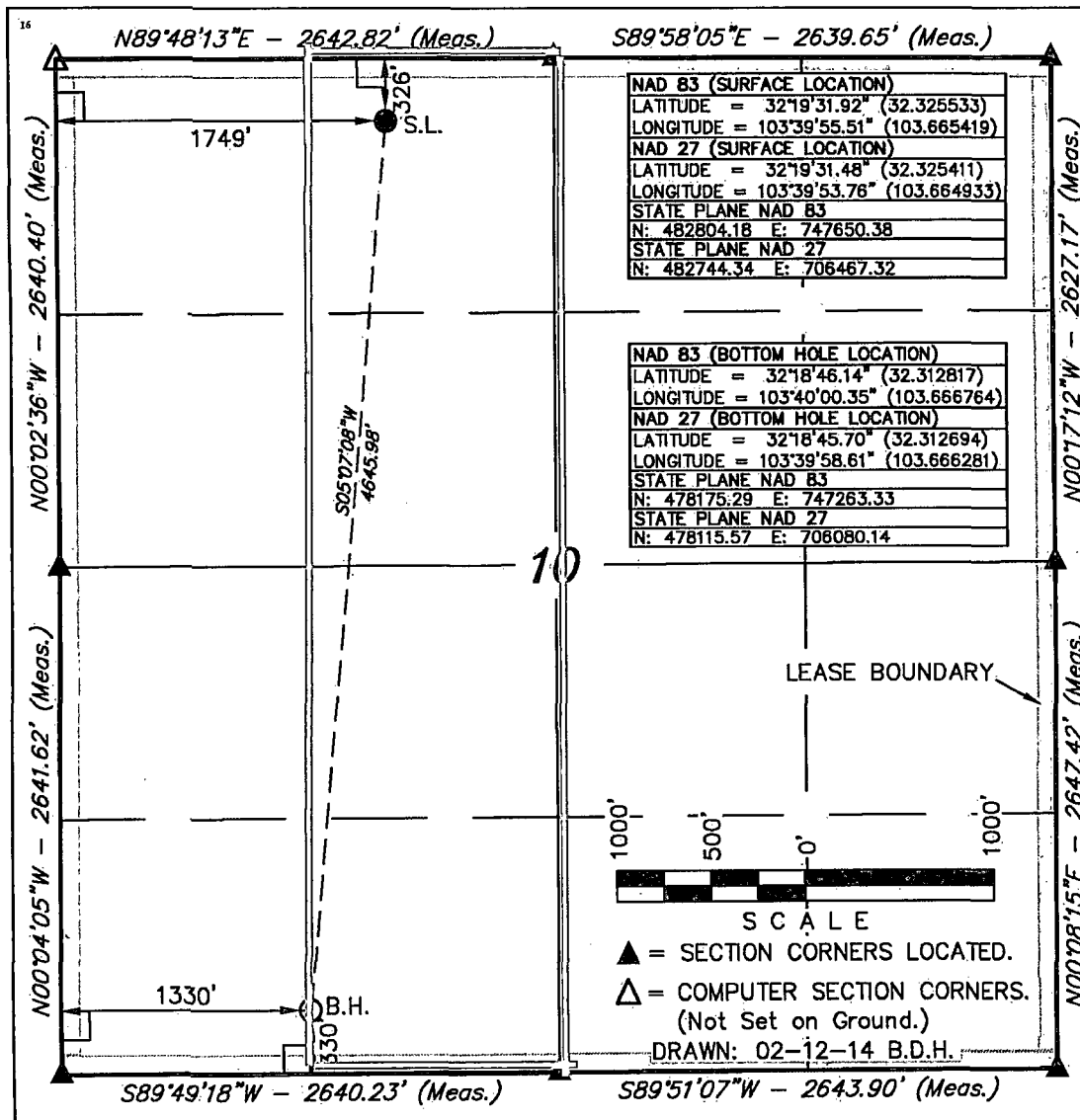
UL or lot no.	Section	Township	Range	Lot Idn	Feet from the	North/South line	Feet from the	East/West line	County
C	10	23 S	32 E		326	NORTH	1749	WEST	LEA

¹¹ Bottom Hole Location If Different From Surface

UL or lot no.	Section	Township	Range	Lot Idn	Feet from the	North/South line	Feet from the	East/West line	County
N	10	23 S	32 E		330	SOUTH	1330	WEST	LEA

¹² Dedicated Acres 160	¹³ Joint or Infill	¹⁴ Consolidation Code	¹⁵ Order No. NSL Pending
--------------------------------------	-------------------------------	----------------------------------	--

No allowable will be assigned to this completion until all interests have been consolidated or a non-standard unit has been approved by the division.



¹⁷ OPERATOR
CERTIFICATION

I hereby certify that the information contained herein is true and complete to the best of my knowledge and belief, and that this organization either owns a working interest or unleased mineral interest in the land including the proposed bottom hole location or has a right to drill this well at this location pursuant to a contract with an owner of such a mineral or working interest, or to a voluntary pooling agreement or a compulsory pooling order heretofore entered by the division.

Aricka Easterling
Signature Date 11-17-14

Aricka Easterling

Printed Name

aeasterling@cimarex.com

E-mail Address

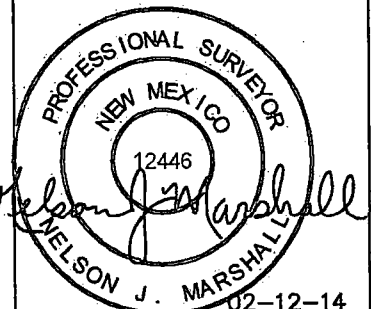
¹⁸ SURVEYOR
CERTIFICATION

I hereby certify that the well location shown on this plat was plotted from field notes of actual surveys made by me or under my supervision, and that the same is true and correct to the best of my belief.

November 13, 2013

Date of Survey

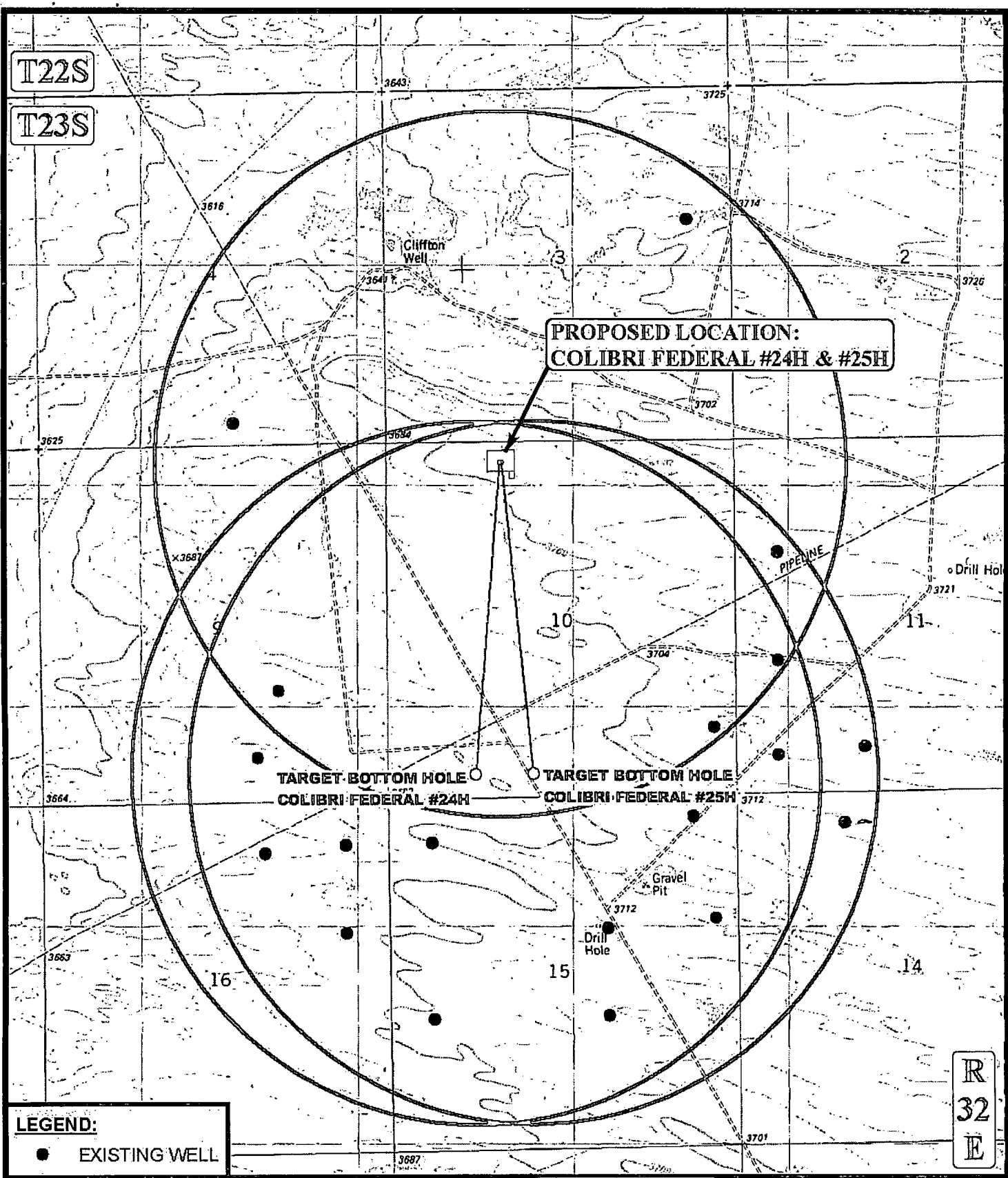
Signature and Seal of Professional Surveyor:



Certificate Number:

NOV 02 2014

T22S
T23S



**PROPOSED LOCATION:
COLIBRI FEDERAL #24H & #25H**

**TARGET BOTTOM HOLE
COLIBRI FEDERAL #24H**

**TARGET BOTTOM HOLE
COLIBRI FEDERAL #25H**

LEGEND:
● EXISTING WELL

R
32
E

SCALE: 1" = 2000'
DRAWN BY: J.M.C.
DATE DRAWN: 12/12/2013

REVISED: 02-12-14



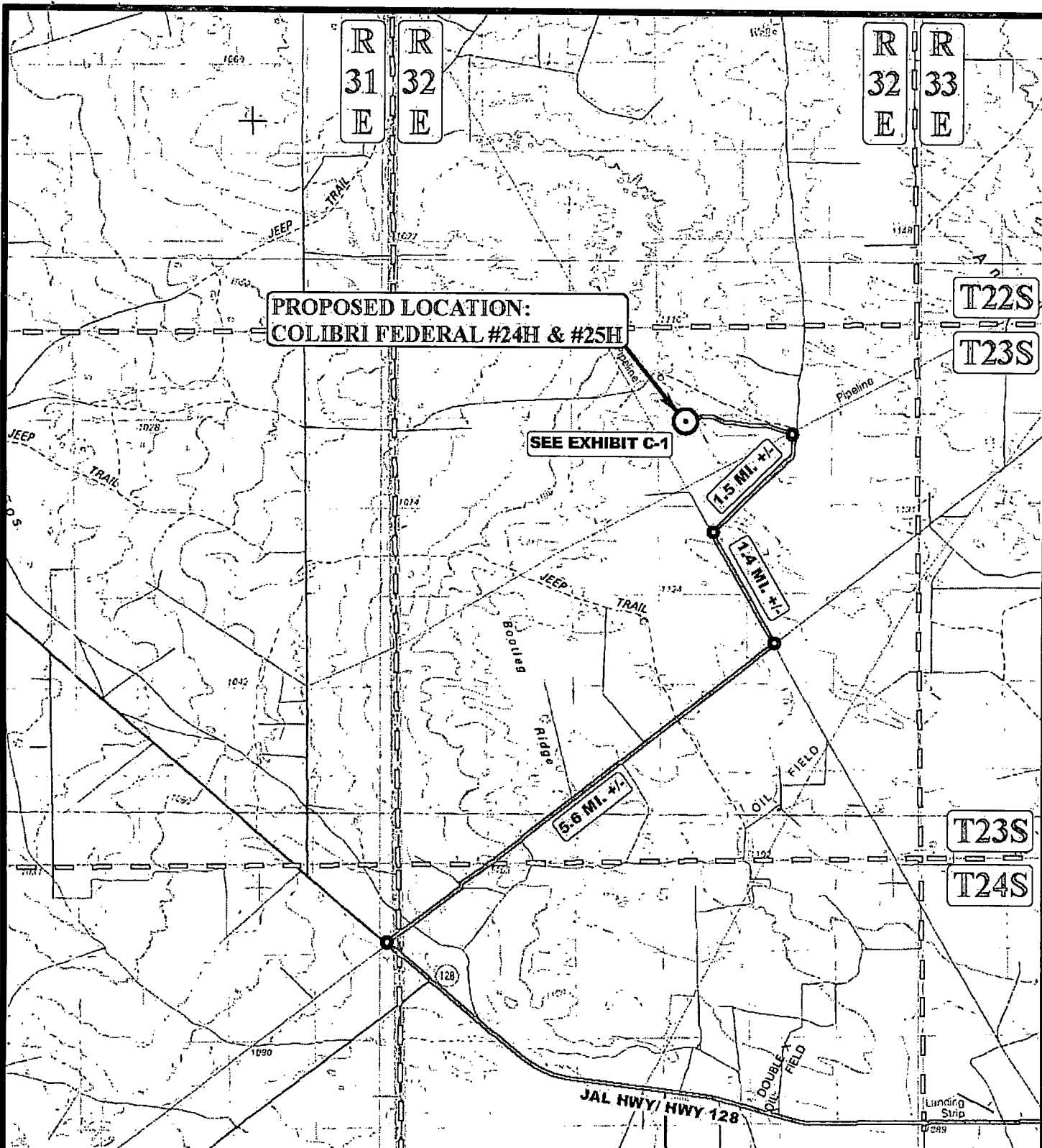
CIMAREX CIMAREX ENERGY CO.

**COLIBRI FEDERAL #24H & #25H
SECTION 10, T23S, R32E, N.M.P.M.
NE 1/4 NW 1/4**

ONE MILE RADIUS PLAT | EXHIBIT A



Corporate Office • 85 South 200 East
Vernal, UT 84078 • (435) 789-1017



LEGEND:



PROPOSED LOCATION

MALAGA, NEW MEXICO IS
+/- 24.8 MILES
SOUTHWESTERLY

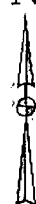
SCALE: 1:100,000

REVISED: 02-12-14

DRAWN BY: J.M.C.

DATE DRAWN: 12/12/2013

N



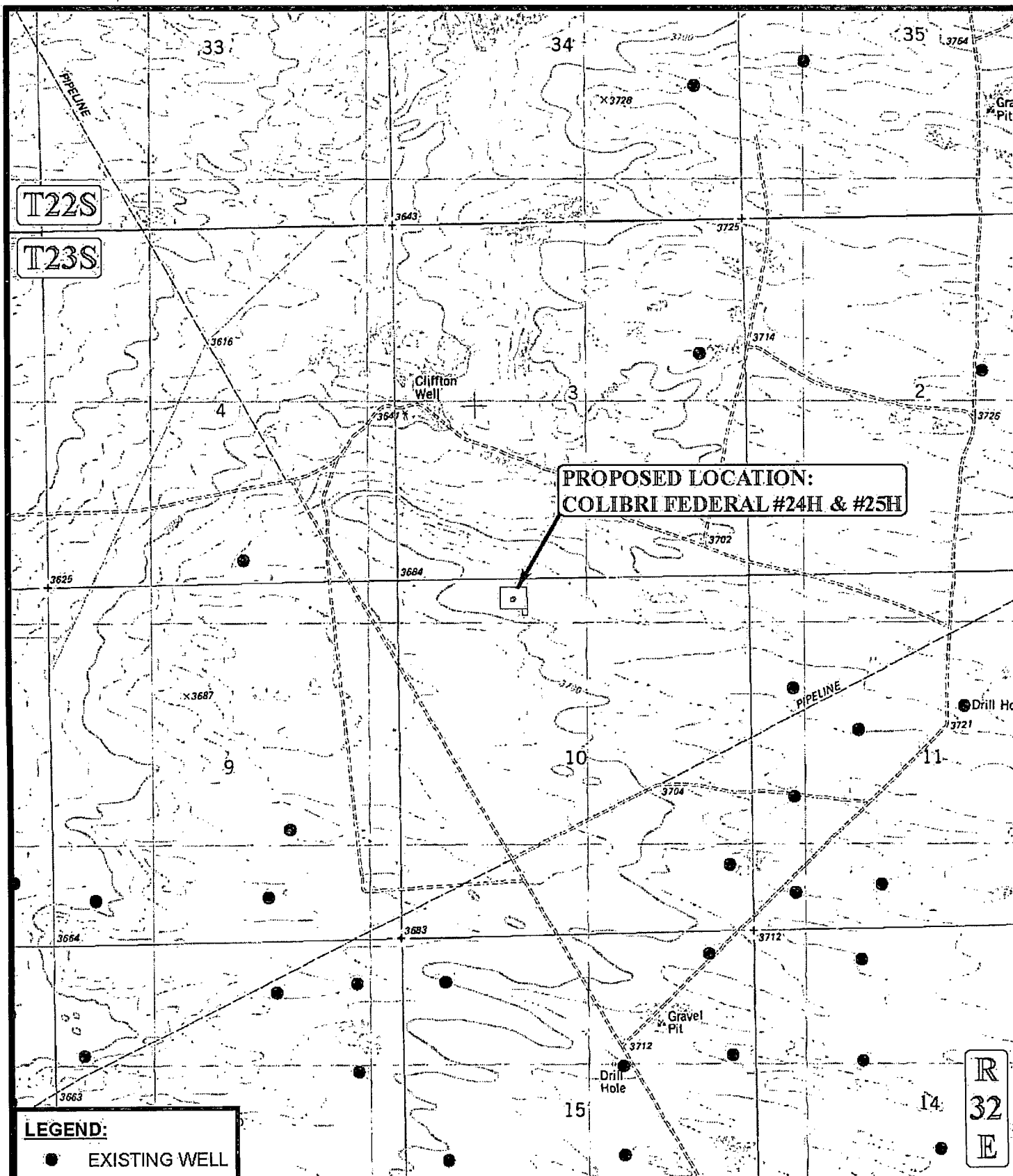
CIMAREX ENERGY CO.

COLIBRI FEDERAL #24H & #25H
SECTION 10, T23S, R32E, N.M.P.M.
NE 1/4 NW 1/4



Corporate Office * 85 South 200 East
Vernal, UT 84078 * (435) 789-1017

PUBLIC ACCESS ROAD MAP EXHIBIT B



LEGEND:

● EXISTING WELL

SCALE: 1" = 2000'

REVISED: 02-12-14

DRAWN BY: J.M.C.

DATE DRAWN: 12/12/2013



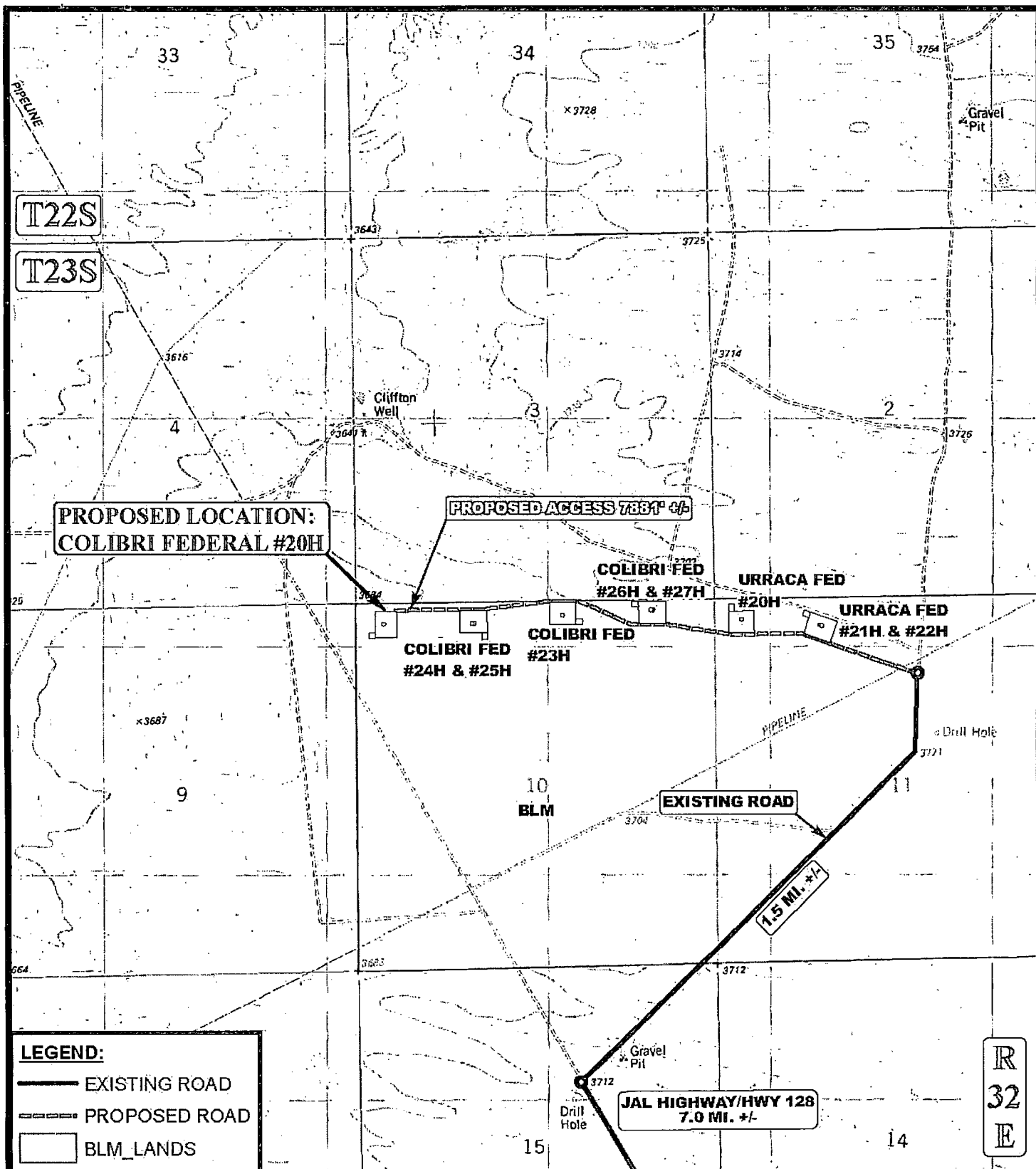
CIMAREX ENERGY CO.

**COLIBRI FEDERAL #24H & #25H
SECTION 10, T23S, R32E, N.M.P.M.
NE 1/4 NW 1/4**

USGS TOPOGRAPHIC MAP EXHIBIT C



Corporate Office * 85 South 200 East
Vernal, UT 84078 * (435) 789-1017



*PARCEL DATA SHOWN HAS BEEN OBTAINED FROM VARIOUS SOURCES AND SHOULD BE USED FOR MAPPING, GRAPHIC AND PLANNING PURPOSES ONLY. NO WARRANTY IS MADE BY UTAH ENGINEERING & LAND SURVEYING (UELS) FOR ACCURACY OF THE PARCEL DATA.

SCALE: 1" = 2000'
 DRAWN BY: J.M.C.
 DATE DRAWN: 01/17/2014

REVISED: 02-12-14



CIMAREX ENERGY CO.

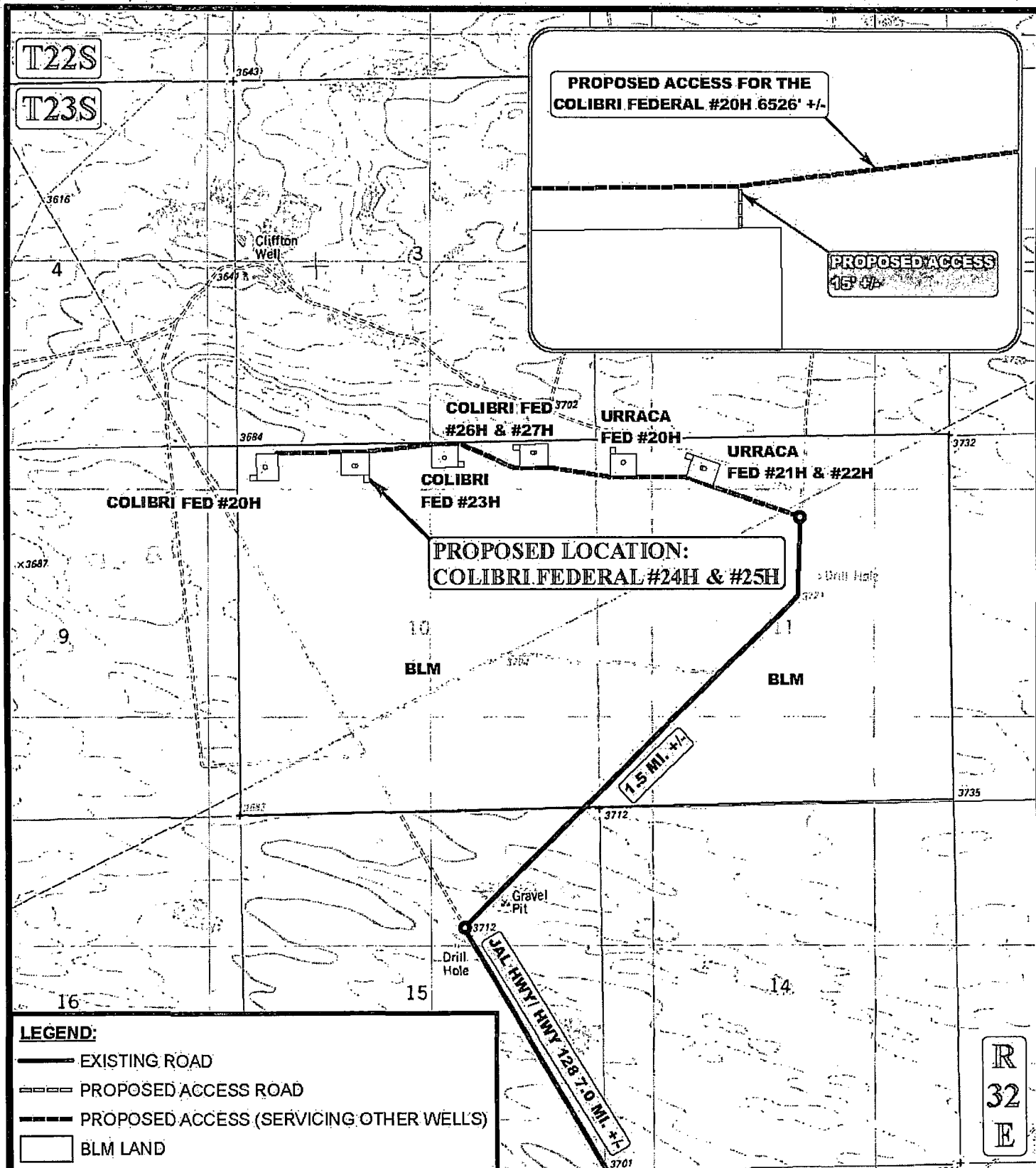
Colibri Federal

ACCESS ROAD MAP

EXHIBIT C-1



Corporate Office * 85 South 200 East
 Vernal, UT 84078 * (435) 789-1017



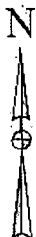
*PARCEL DATA SHOWN HAS BEEN OBTAINED FROM VARIOUS SOURCES AND SHOULD BE USED FOR MAPPING, GRAPHIC AND PLANNING PURPOSES ONLY. NO WARRANTY IS MADE BY UINTAH ENGINEERING & LAND SURVEYING (UELS) FOR ACCURACY OF THE PARCEL DATA.

SCALE: 1" = 2000'

REVISED: 02-12-14

DRAWN BY: J.M.C.

DATE DRAWN: 12/12/2013



CIMAREX ENERGY CO.

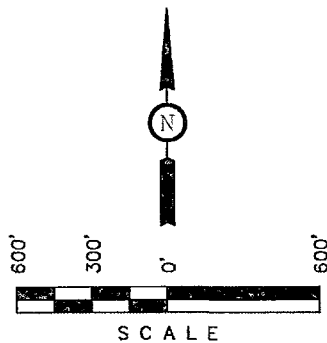
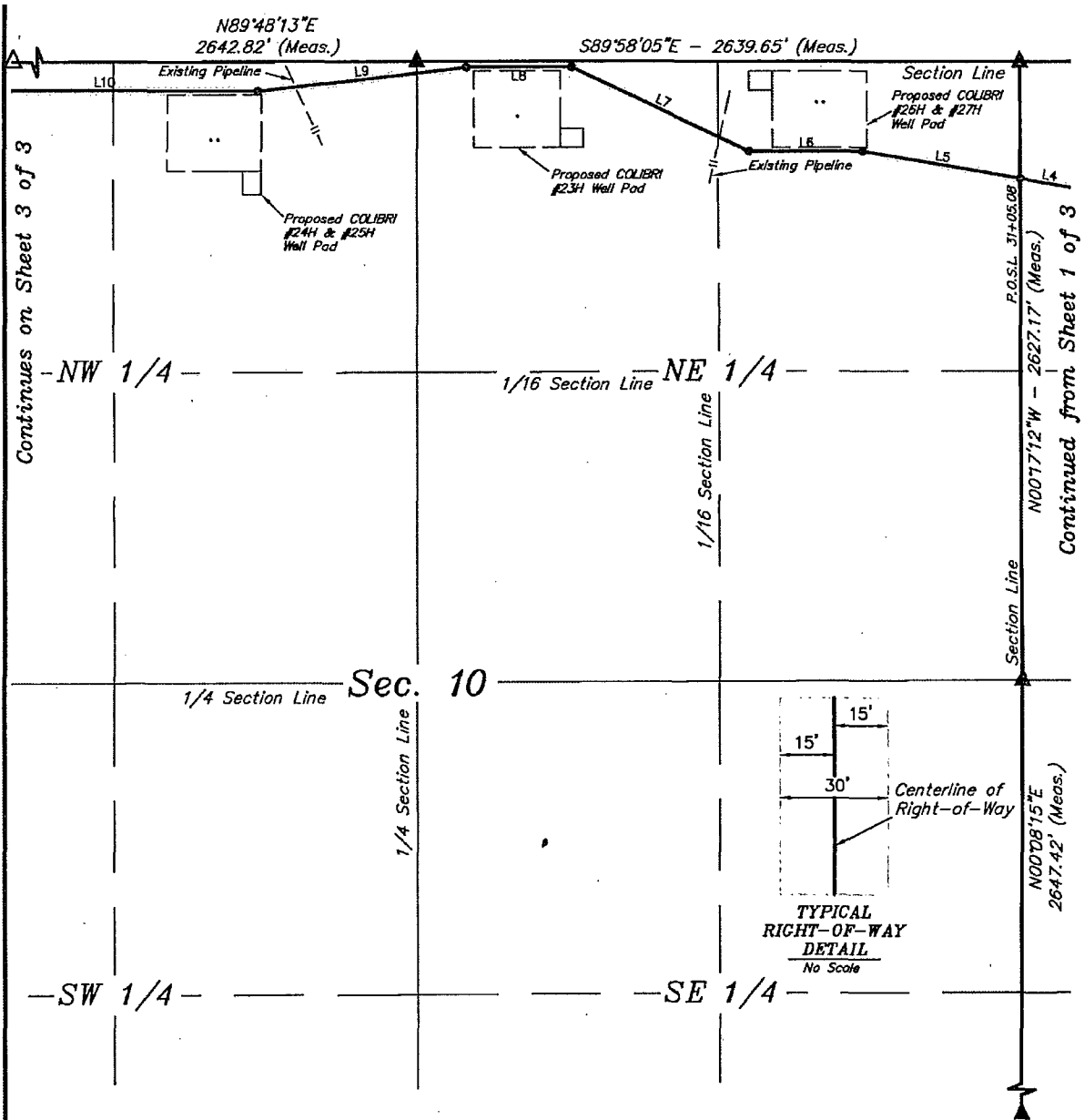
**COLIBRI FEDERAL #24H & #25H
SECTION 10, T23S, R32E, N.M.P.M.
NE 1/4 NW 1/4**

ACCESS ROAD MAP

EXHIBIT C-1



Corporate Office * 85 South 200 East
Vernal, UT 84078 * (435) 789-1017

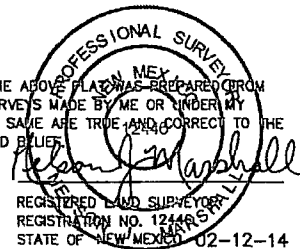


LINE TABLE		
LINE	DIRECTION	LENGTH
L5	N80°32'17"W	701.21'
L6	N89°58'15"W	495.02'
L7	N65°38'40"W	850.26'
L8	S89°59'06"W	461.76'
L9	S83°44'55"W	912.84'
L10	N89°57'57"W	1340.03'

P.O.S.L. STA. 31+05.08 BEARS S00°17'12"E
489.88' FROM THE NORTHWEST CORNER OF
SECTION 11, T23S, R32E, N.M.P.M.

- ▲ = SECTION CORNERS LOCATED.
 △ = SECTION CORNERS RE-ESTABLISHED.
 (Not Set on Ground.)

THIS IS TO CERTIFY THAT THE ABOVE PLAT WAS PREPARED FROM
FIELD NOTES OF ACTUAL SURVEYS MADE BY ME OR UNDER MY
SUPERVISION AND THAT THE SAME ARE TRUE AND CORRECT TO THE
BEST OF MY KNOWLEDGE AND BELIEF.



Sheet 2 of 3

NOTES:

- The maximum grade of existing ground for the proposed access road is ±1%.



CIMAREX ENERGY CO.

Colibri Federal

DRAWN BY: B.D.H.

SCALE: 1" = 600'

DATE: 01-10-14

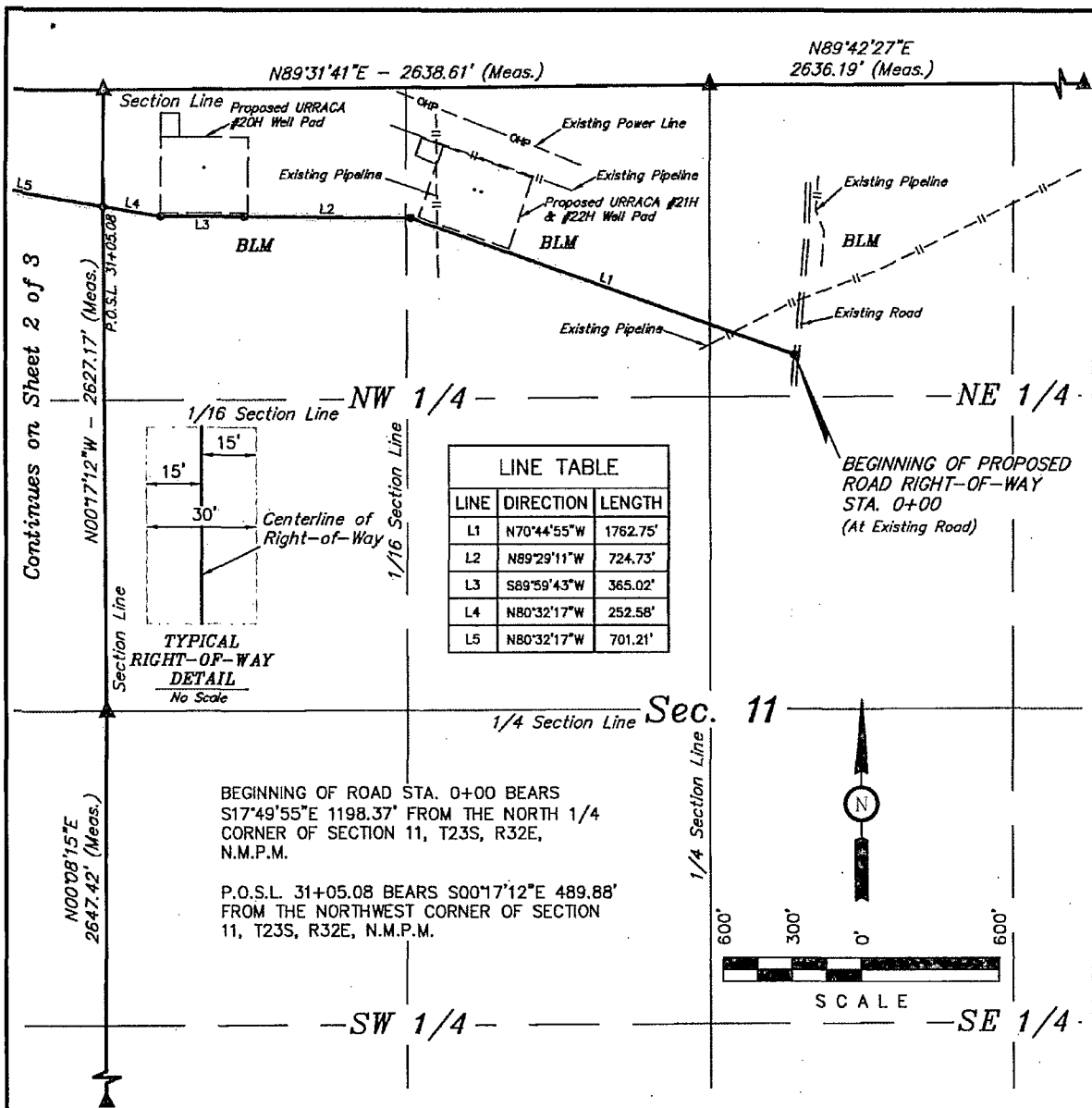
REVISED: 02-12-14

ACCESS ROAD R-O-W

EXHIBIT C-2



Corporate Office * 85 South 200 East
Vernal, UT 84078 * (435) 789-1017



ROAD RIGHT-OF-WAY DESCRIPTION

A 30' WIDE RIGHT-OF-WAY 15' ON EACH SIDE OF THE FOLLOWING DESCRIBED CENTERLINE.

BEGINNING AT A POINT IN THE NW 1/4 NE 1/4 OF SECTION 11, T23S, R32E, N.M.P.M., WHICH BEARS S17°49'55"E 1198.37' FROM THE NORTH 1/4 CORNER OF SAID SECTION 11, THENCE N70°44'55"W 1762.75'; THENCE N89°29'11"W 724.73'; THENCE S89°59'43"W 365.02'; THENCE N80°32'17"W 252.58' TO A POINT ON THE WEST LINE OF THE NW 1/4 NW 1/4 OF SAID SECTION 11, WHICH BEARS S00°17'12"E 489.88' FROM THE NORTHWEST CORNER OF SAID SECTION 11, THENCE N80°32'17"W 701.21'; THENCE N89°58'15"W 495.02'; THENCE N65°38'40"W 850.26'; THENCE S89°59'06"W 461.76'; THENCE S83°44'55"W 912.84'; THENCE N89°57'57"W 1340.03'; THENCE S00°13'19"W 14.82' TO A POINT IN THE NW 1/4 NW 1/4 OF SECTION 10, T23S, R32E, N.M.P.M., WHICH BEARS S86°05'16"W 2033.18' FROM THE NORTH 1/4 CORNER OF SAID SECTION 10. THE SIDE LINES OF SAID DESCRIBED RIGHT-OF-WAY BEING SHORTENED OR ELONGATED TO MEET THE GRANTOR'S PROPERTY LINES. BASIS OF BEARINGS IS A G.P.S. OBSERVATION. CONTAINS 5.427 ACRES MORE OR LESS.

RIGHT-OF-WAY LENGTHS

DESCRIPTION	FEET	ACRES	RODS
SEC. 11, NE 1/4	387.73	0.267	23.50
SEC. 11, NW 1/4	2717.35	1.871	164.69
SEC. 10, NE 1/4	2728.59	1.879	165.37
SEC. 10, NW 1/4	2047.35	1.410	124.08
TOTAL	7881.02	5.428	477.64

▲ = SECTION CORNERS LOCATED.

△ = SECTION CORNERS RE-ESTABLISHED.
(Not Set on Ground.)

NOTES:

The maximum grade of existing ground for the proposed access road is ±1%.

CERTIFICATION OF PROFESSIONAL SURVEY

THIS IS TO CERTIFY THAT THE ABOVE PLAT WAS PREPARED FROM FIELD NOTES OF ACTUAL SURVEYS MADE BY ME OR UNDER MY SUPERVISION AND THAT THE SAME ARE TRUE AND CORRECT TO THE BEST OF MY KNOWLEDGE AND BELIEF.

REGISTERED LAND SURVEYOR
REGISTRATION NO. 12468-5
STATE OF NEW MEXICO 02-12-14

Sheet 1 of 3



Corporate Office * 85 South 200 East
Vernal, UT 84078 * (435) 789-1017



CIMAREX ENERGY CO.

Colibri Federal

DRAWN BY: B.D.H.

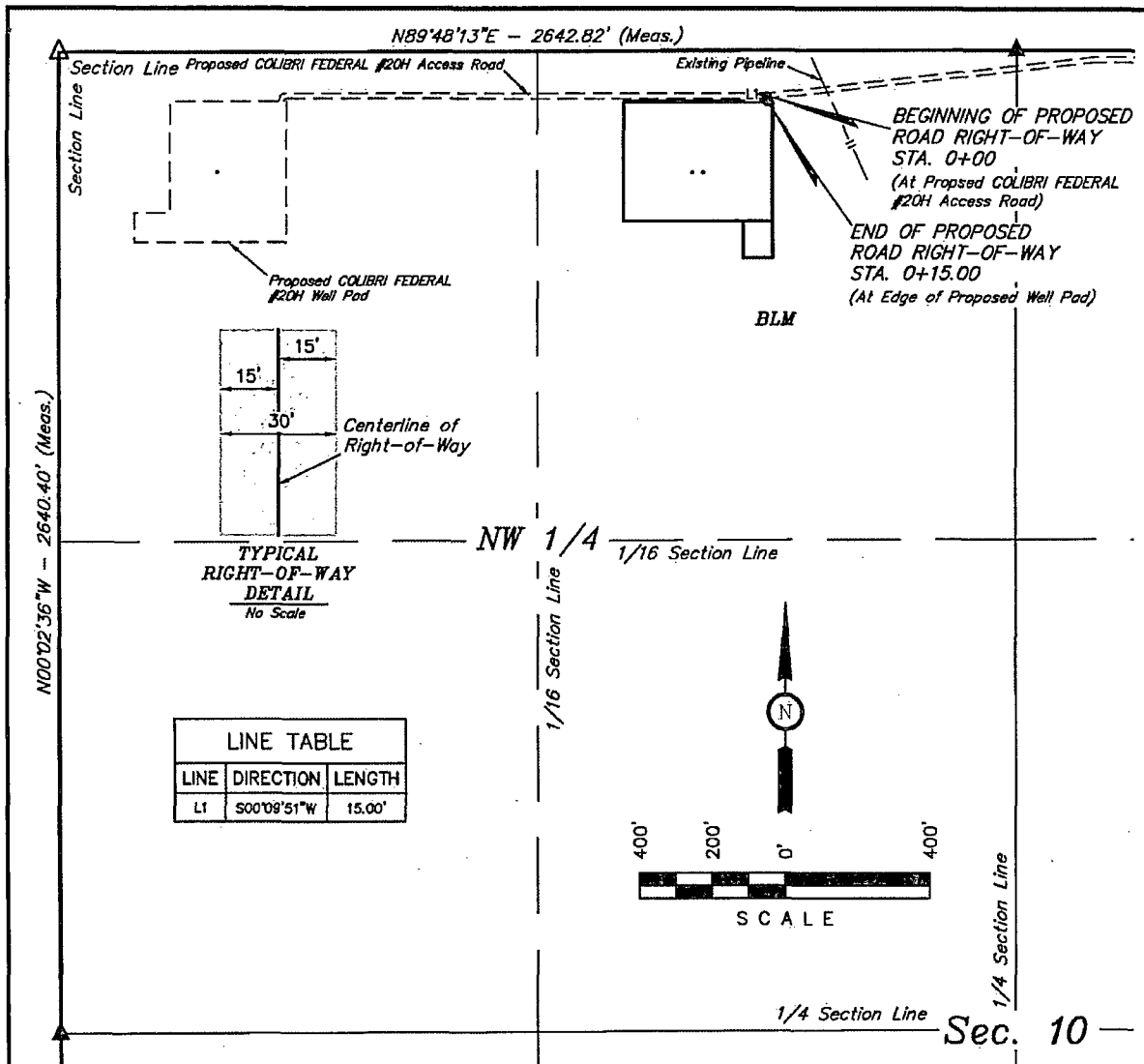
SCALE: 1" = 600'

DATE: 01-10-14

REVISED: 02-12-14

ACCESS ROAD R-O-W

EXHIBIT C-2



ROAD RIGHT-OF-WAY DESCRIPTION

A 30' WIDE RIGHT-OF-WAY 15' ON EACH SIDE OF THE FOLLOWING DESCRIBED CENTERLINE.

BEGINNING AT A POINT IN THE NE 1/4 NW 1/4 OF SECTION 10, T23S, R32E, N.M.P.M., WHICH BEARS S79°43'55"W 699.56' FROM THE NORTH 1/4 CORNER OF SAID SECTION 10, THENCE S00°09'51"W 15.00' TO A POINT IN THE NE 1/4 NW 1/4 OF SAID SECTION 10, WHICH BEARS S78°31'42"W 702.43' FROM THE NORTH 1/4 CORNER OF SAID SECTION 10. THE SIDE LINES OF SAID DESCRIBED RIGHT-OF-WAY BEING SHORTENED OR ELONGATED TO MEET THE GRANTOR'S PROPERTY LINES. BASIS OF BEARINGS IS A G.P.S. OBSERVATION. CONTAINS 0.010 ACRES MORE OR LESS.

BEGINNING OF ROAD STA. 0+00 BEARS S79°43'55"W 699.56' FROM THE NORTH 1/4 CORNER OF SECTION 10, T23S, R32E, N.M.P.M.

END OF ROAD STA. 0+15.00 BEARS S78°31'42"W 702.43' FROM THE NORTH 1/4 CORNER OF SECTION 10, T23S, R32E, N.M.P.M.

RIGHT-OF-WAY LENGTHS

DESCRIPTION	FEET	ACRES	RODS
BLM	15.00	0.010	0.91

- ▲ = SECTION CORNERS LOCATED.
 △ = SECTION CORNERS RE-ESTABLISHED.
 (Not Set on Ground.)

NOTES:

- The maximum grade of existing ground for the proposed access road is ±13%.

CERTIFICATE OF PROFESSIONAL SURVEY

THIS IS TO CERTIFY THAT THE ABOVE MAP WAS PREPARED FROM FIELD NOTES OF ACTUAL SURVEYS MADE BY ME OR UNDER MY SUPERVISION AND THAT THE SAME ARE TRUE AND CORRECT TO THE BEST OF MY KNOWLEDGE AND BELIEF.

REGISTERED LAND SURVEYOR
 REGISTRATION NO. 12445
 STATE OF NEW MEXICO 02-12-14



Corporate Office * 85 South 200 East
 Vernal, UT 84078 * (435) 789-1017



CIMAREX ENERGY CO.

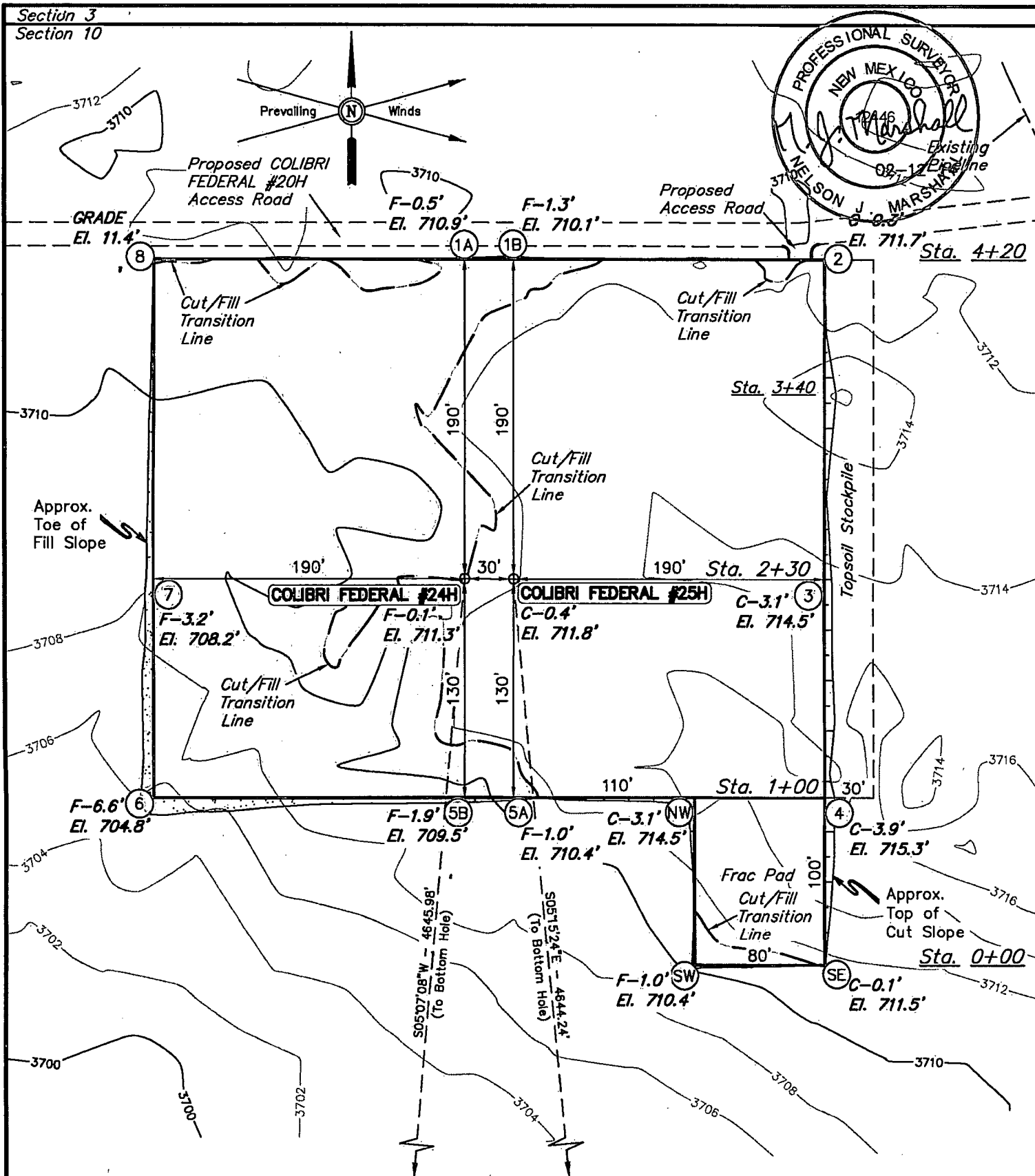
COLIBRI FEDERAL #24H & #25H
 SECTION 10, T23S, R32E, N.M.P.M.
 NE 1/4 NW 1/4

DRAWN BY: B.D.H. SCALE: 1" = 400'
 DATE: 01-13-14 REVISED: 02-12-14

ACCESS ROAD R-O-W

EXHIBIT C-2

Section 3
Section 10



ELEV. UNGRADED GROUND AT #24H LOC. STAKE = 3711.3' FINISHED GRADE ELEV. AT #24H LOC. STAKE = 3711.4'

NOTES:

- Flare pit is to be located a min. of 100' from the well head.
- Underground utilities shown on this sheet are for visualization purposes only; actual locations to be determined prior to construction.



CIMAREX ENERGY CO.

COLIBRI FEDERAL #24H & #25H
SECTION 10, T23S, R32E, N.M.P.M.
NE 1/4 NW 1/4

DRAWN BY: B.D.H.

SCALE: 1" = 80'

DATE: 01-13-14

REVISED: 02-12-14

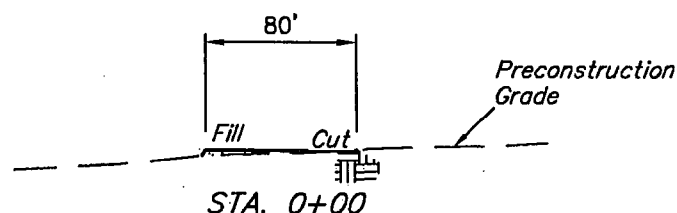
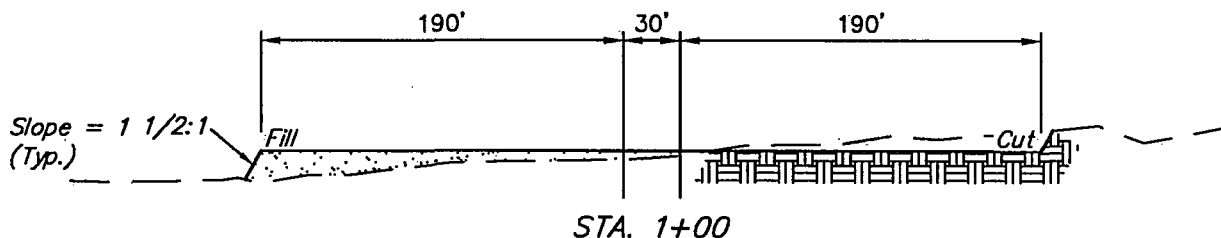
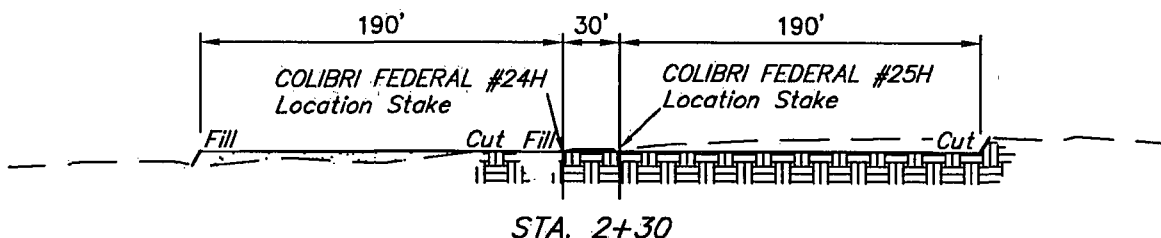
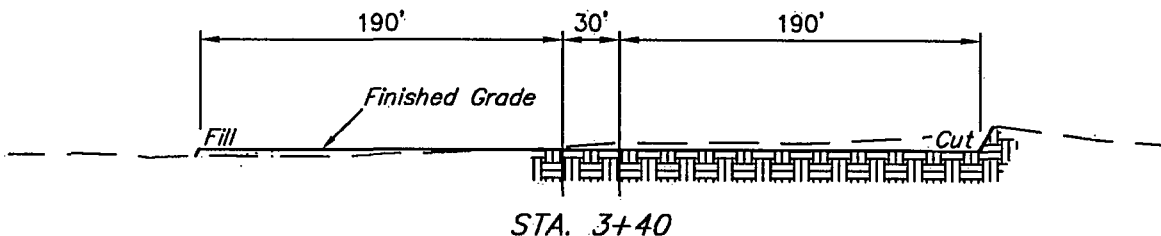
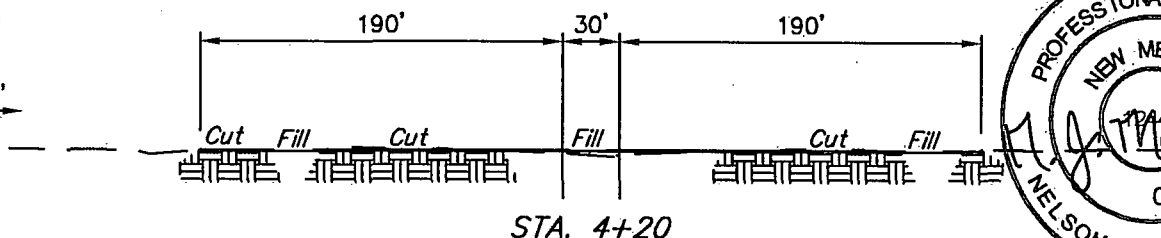
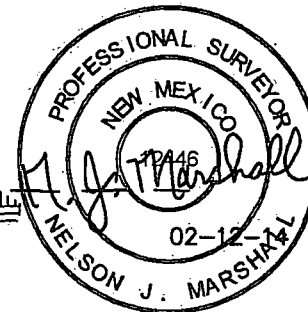
LOCATION LAYOUT

EXHIBIT D



Corporate Office * 85 South 200 East
Vernal, UT 84078 * (435) 789-1017

1" = 40'
X-Section
Scale
1" = 100'



APPROXIMATE EARTHWORK QUANTITIES		APPROXIMATE SURFACE DISTURBANCE AREAS		
(3") TOPSOIL STRIPPING	1,330 Cu. Yds.		DISTANCE	ACRES
REMAINING LOCATION	4,160 Cu. Yds.	WELL SITE DISTURBANCE	NA	±3.495
TOTAL CUT	5,490 Cu. Yds.	ACCESS ROAD DISTURBANCE	±15.00'	±0.010
FILL	4,160 Cu. Yds.	FLOW LINE DISTURBANCE	±35.00'	±0.008
EXCESS MATERIAL	1,330 Cu. Yds.			
TOPSOIL	1,330 Cu. Yds.			
EXCESS UNBALANCE (After Interim Rehabilitation)	0 Cu. Yds.	TOTAL DISTURBANCE	±50.00'	±3.513

- NOTES:
- Fill quantity includes 5% for compaction.
 - Topsoil should not be stripped below finished grade on substructure area.



CIMAREX ENERGY CO.

COLIBRI FEDERAL #24H & #25H
SECTION 10, T23S, R32E, N.M.P.M.
NE 1/4 NW 1/4

DRAWN BY: B.D.H.

SCALE: AS SHOWN

DATE: 01-13-14

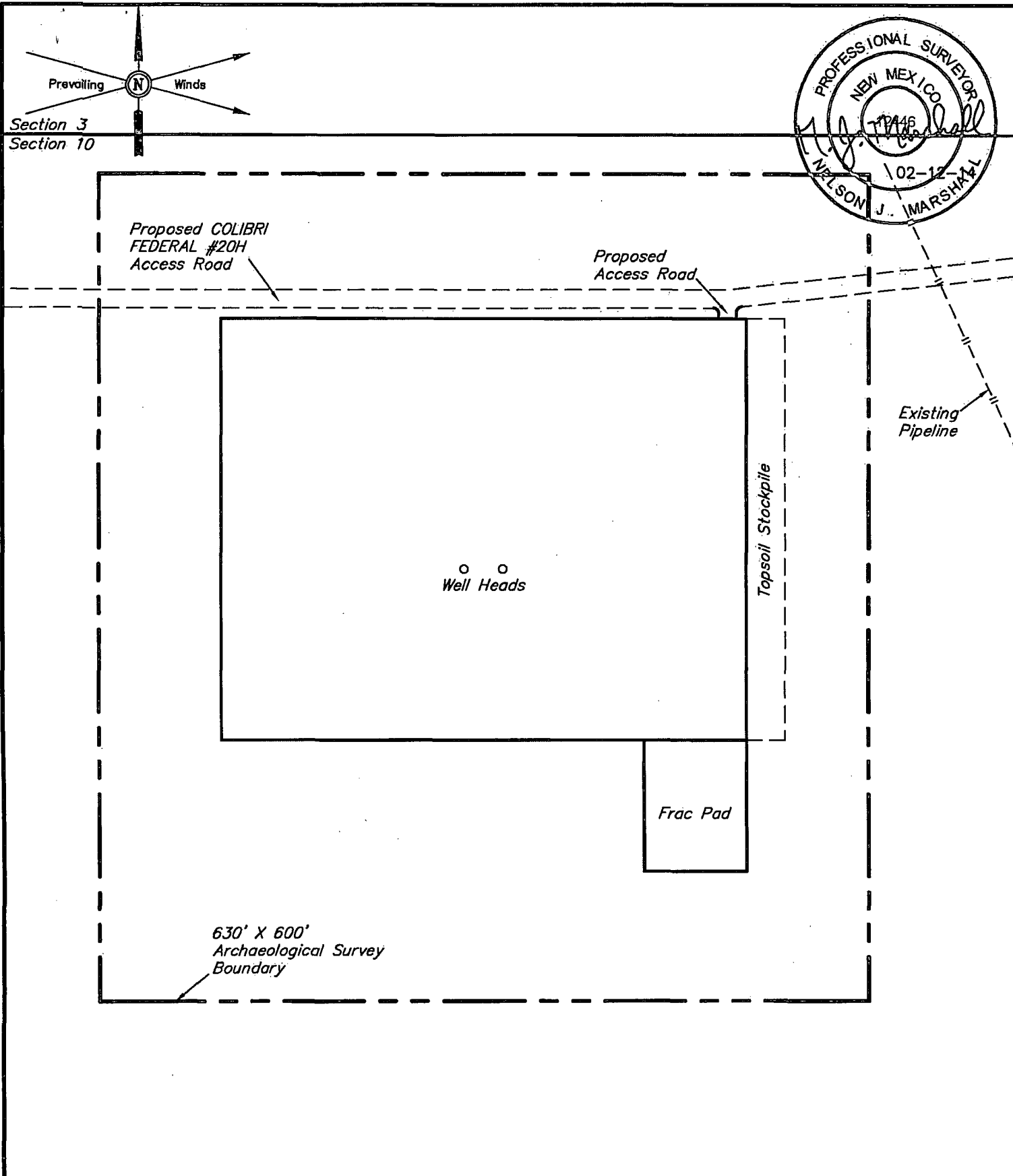
REVISED: 02-12-14



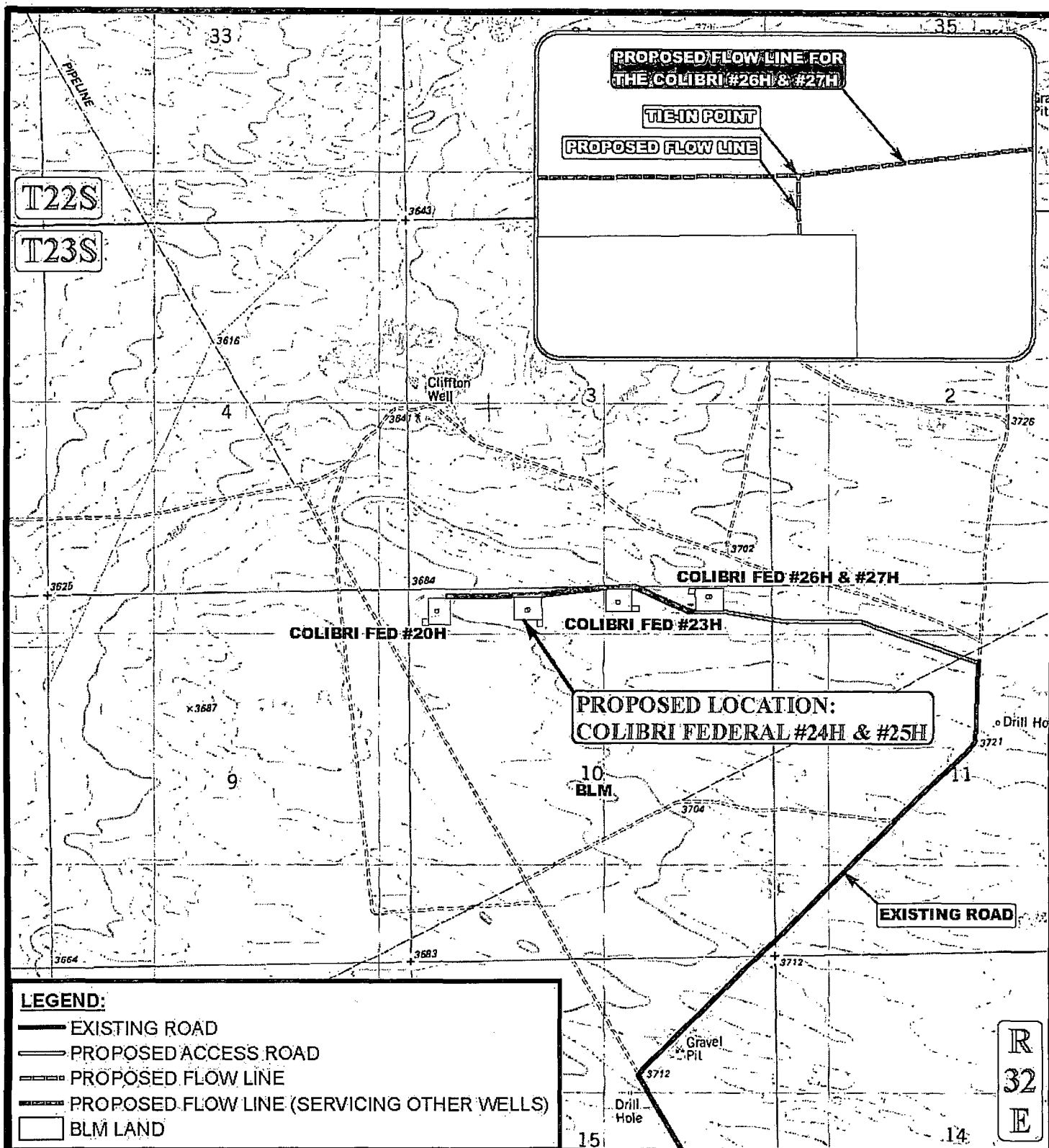
Corporate Office * 85 South 200 East
Vernal, UT 84078 * (435) 789-1017

TYPICAL CROSS SECTIONS

EXHIBIT D



<div>NOTES:</div>		<div><div><div>CIMAREX</div></div><div>CIMAREX ENERGY CO.</div></div>	
		<div>COLIBRI FEDERAL #24H & #25H SECTION 10, T23S, R32E, N.M.P.M. NE 1/4 NW 1/4</div>	
<div><div><div><div></div></div><div>U I N T A H</div><div>ENGINEERING & LAND SURVEYING</div></div><div>Corporate Office * 85 South 200 East Vernal, UT 84078 * (435) 789-1017</div></div>		<div>DRAWN BY: B.D.H.</div>	<div>SCALE: 1" = 100'</div>
		<div>DATE: 01-13-14</div>	<div>REVISED: 02-12-14</div>
		<div>ARCHAEOLOGICAL SURVEY BOUNDARY</div>	
		<div>EXHIBIT D</div>	



APPROXIMATE TOTAL FLOW LINE DISTANCE = 35' +/-

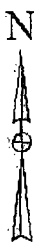
*PARCEL DATA SHOWN HAS BEEN OBTAINED FROM VARIOUS SOURCES AND SHOULD BE USED FOR MAPPING, GRAPHIC AND PLANNING PURPOSES ONLY. NO WARRANTY IS MADE BY UTAH ENGINEERING & LAND SURVEYING (UELS) FOR ACCURACY OF THE PARCEL DATA.

SCALE: 1" = 2000'

REVISED: 02-12-14

DRAWN BY: J.M.C.

DATE DRAWN: 12/12/2013



CIMAREX ENERGY CO.

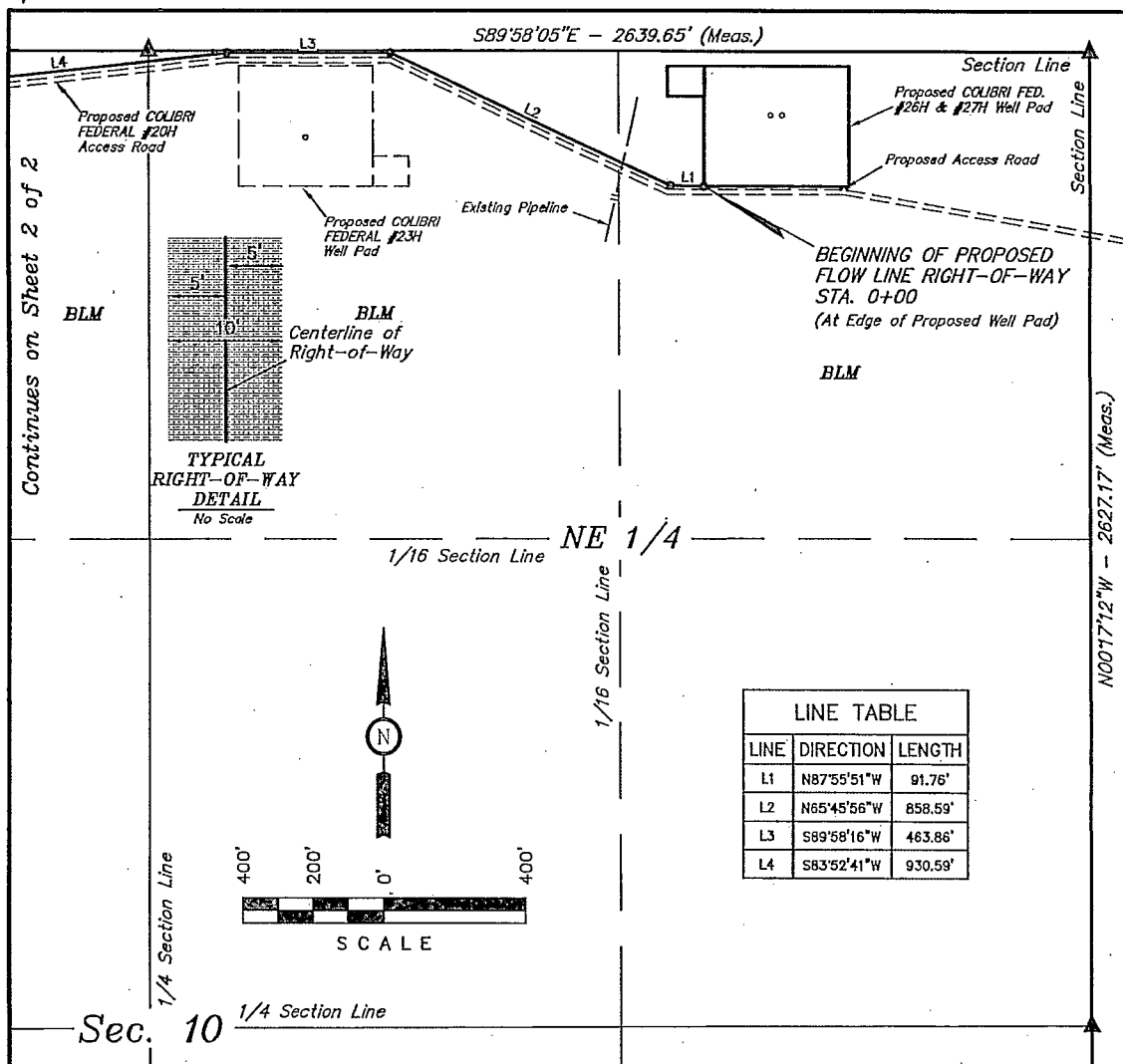
**COLIBRI FEDERAL #24H & #25H
SECTION 10, T23S, R32E, N.M.P.M.
NE 1/4 NW 1/4**

FLOW LINE MAP

EXHIBIT C



Corporate Office * 85 South 200 East
Vernal, UT 84078 * (435) 789-1017



LINE TABLE		
LINE	DIRECTION	LENGTH
L1	N87°55'51\"W	91.76'
L2	N65°45'56\"W	858.59'
L3	S89°58'16\"W	463.86'
L4	S83°52'41\"W	930.59'

FLOW LINE RIGHT-OF-WAY DESCRIPTION

A 10' WIDE RIGHT-OF-WAY 5' ON EACH SIDE OF THE FOLLOWING DESCRIBED CENTERLINE.

BEGINNING AT A POINT IN THE NE 1/4 NE 1/4 OF SECTION 10, T23S, R32E, N.M.P.M., WHICH BEARS S71°39'35\"W 1142.29' FROM THE NORTHEAST CORNER OF SAID SECTION 10, THENCE N87°55'51\"W 91.76'; THENCE N65°45'56\"W 858.59'; THENCE S89°58'16\"W 463.86'; THENCE S83°52'41\"W 930.59'; THENCE N89°57'51\"W 1339.97'; THENCE N00°06'11\"E 35.00' TO A POINT IN THE NW 1/4 NW 1/4 OF SAID SECTION 10, WHICH BEARS S86°07'24\"W 2053.12' FROM THE NORTH 1/4 CORNER OF SAID SECTION 10. THE SIDE LINES OF SAID DESCRIBED RIGHT-OF-WAY BEING SHORTENED OR ELONGATED TO MEET THE GRANTOR'S PROPERTY LINES. BASIS OF BEARINGS IS A G.P.S. OBSERVATION. CONTAINS 0.854 ACRES MORE OR LESS.

BEGINNING OF FLOW LINE STA. 0+00 BEARS S71°39'35\"W 1142.29' FROM THE NORTHEAST CORNER OF SECTION 10, T23S, R32E, N.M.P.M.

RIGHT-OF-WAY LENGTHS			
DESCRIPTION	FEET	ACRES	RODS
NE 1/4, SEC. 10	1632.32	0.375	98.93
NW 1/4, SEC. 10	2087.45	0.479	126.51
TOTAL	3719.77	0.854	225.44

▲ = SECTION CORNERS LOCATED.

CERTIFICATE OF PROFESSIONAL SURVEYOR
THIS IS TO CERTIFY THAT THE ABOVE PLAT WAS PREPARED FROM FIELD NOTES OF ACTUAL SURVEYS MADE BY ME OR UNDER MY SUPERVISION AND THAT THE SAME ARE TRUE AND CORRECT TO THE BEST OF MY KNOWLEDGE AND BELIEF.

REGISTERED LAND SURVEYOR
REGISTRATION NO. 12446
STATE OF NEW MEXICO
02-12-14

Sheet 1 of 2

NOTES:

CIMAREX

CIMAREX ENERGY CO.

Colibri Federal

DRAWN BY: B.D.H.

SCALE: 1" = 400'

DATE: 02-03-14

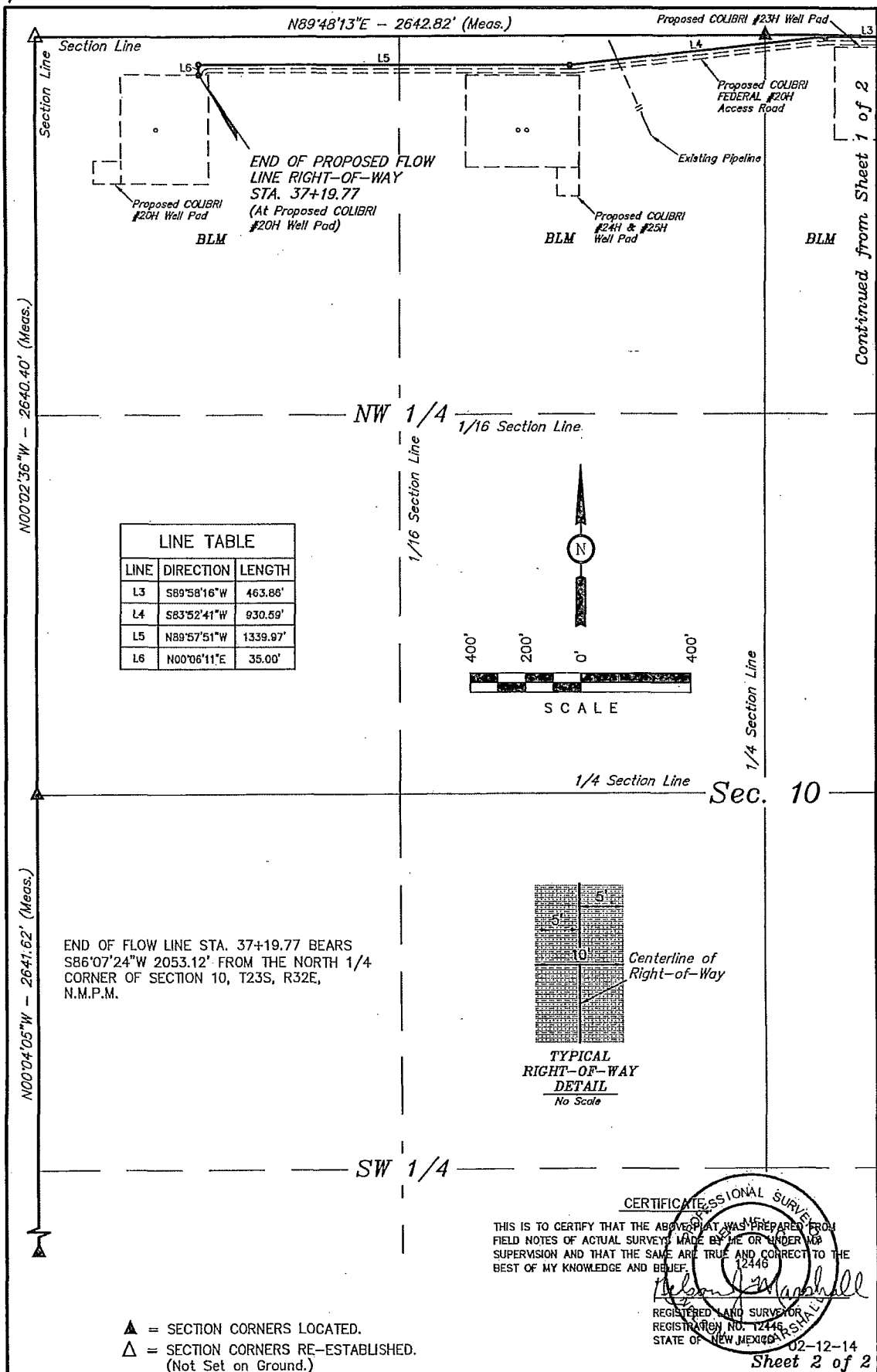
REVISED: 02-12-14



Corporate Office * 85 South 200 East
Vernal, UT 84078 * (435) 789-1017

FLOW LINE R-O-W

EXHIBIT C-1



Corporate Office * 85 South 200 East
Vernal, UT 84078 * (435) 789-1017



CIMAREX ENERGY CO.

Colibri Federal

DRAWN BY: B.D.H.

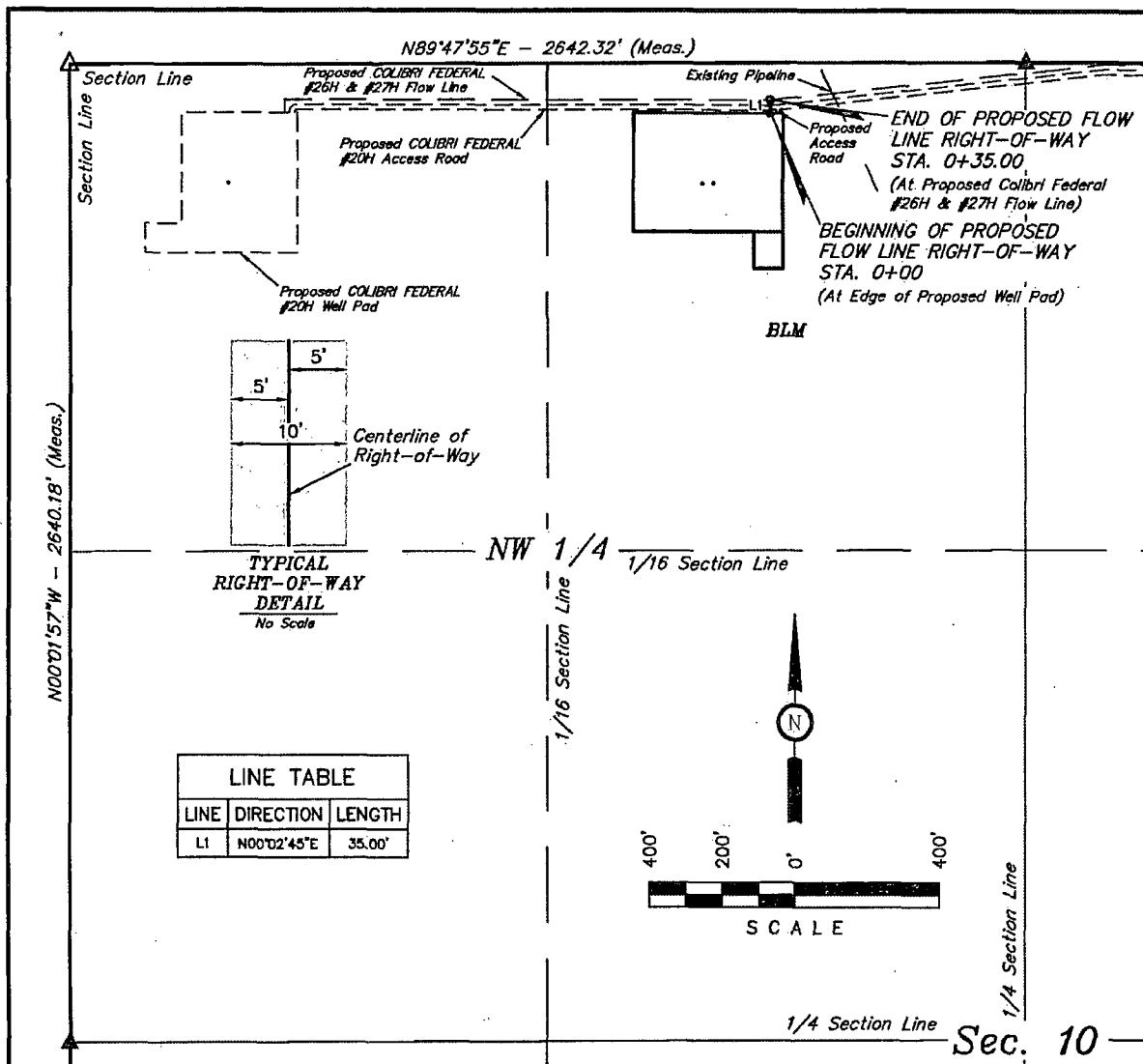
SCALE: 1" = 400'

DATE: 02-03-14

REVISED: 02-12-14

FLOW LINE R-O-W

EXHIBIT C-1



FLOW LINE RIGHT-OF-WAY DESCRIPTION

A 10' WIDE RIGHT-OF-WAY 5' ON EACH SIDE OF THE FOLLOWING DESCRIBED CENTERLINE.

BEGINNING AT A POINT IN THE NE 1/4 NW 1/4 OF SECTION 10, T23S, R32E, N.M.P.M., WHICH BEARS S78°51'01\"W 722.05' FROM THE NORTH 1/4 CORNER OF SAID SECTION 10, THENCE N00°02'45\"E 35.00' TO A POINT IN THE NE 1/4 NW 1/4 OF SAID SECTION 10, WHICH BEARS S81°35'49\"W 716.08' FROM THE NORTH 1/4 CORNER OF SAID SECTION 10. THE SIDE LINES OF SAID DESCRIBED RIGHT-OF-WAY BEING SHORTENED OR ELONGATED TO MEET THE GRANTOR'S PROPERTY LINES. BASIS OF BEARINGS IS A G.P.S. OBSERVATION. CONTAINS 0.008 ACRES MORE OR LESS.

BEGINNING OF FLOW LINE STA. 0+00 BEARS S78°51'01\"W 722.05' FROM THE NORTH 1/4 CORNER OF SECTION 10, T23, R32E, N.M.P.M.

END OF FLOW LINE STA. 0+35.00 BEARS S81°35'49\"W 716.08' FROM THE NORTH 1/4 CORNER OF SECTION 10, T23S, R32E, N.M.P.M.

RIGHT-OF-WAY LENGTHS			
DESCRIPTION	FEET	ACRES	RODS
BLM	35.00	0.008	2.12

- ▲ = SECTION CORNERS LOCATED.
 △ = SECTION CORNERS RE-ESTABLISHED.
 (Not Set on Ground.)

NOTES:

THIS IS TO CERTIFY THAT THE ABOVE MAP WAS PREPARED FROM FIELD NOTES OF ACTUAL SURVEYS MADE BY ME OR UNDER MY SUPERVISION AND THAT THE SAME ARE TRUE AND CORRECT TO THE BEST OF MY KNOWLEDGE AND BELIEF.

CERTIFICATE OF PROFESSIONAL SURVEY
 REGISTERED LAND SURVEYOR
 REGISTRATION NO. 12446
 STATE OF NEW MEXICO
 02-12-14



Corporate Office * 85 South 200 East
 Vernal, UT 84078 * (435) 789-1017



CIMAREX ENERGY CO.

COLIBRI FEDERAL #24H & #25H
 SECTION 10, T23S, R32E, N.M.P.M.
 NE 1/4 NW 1/4

DRAWN BY: B.D.H.
 DATE: 01-13-14



SCALE: 1" = 400'
 REVISED: 02-12-14

FLOW LINE R-O-W

EXHIBIT C-1

BEGINNING AT THE INTERSECTION OF JAL HIGHWAY/ HWY 128 AND AN EXISTING ROAD TO THE NORTHEAST LOCATED IN THE SE 1/4 OF SECTION 1, T24S, R31E, N.M.P.M. PROCEED IN A NORTHEASTERLY DIRECTION APPROXIMATELY 5.6 MILES TO THE JUNCTION OF THIS ROAD AND AN EXISTING ROAD TO THE NORTHWEST; TURN LEFT AND PROCEED IN A NORTHWESTERLY DIRECTION APPROXIMATELY 1.4 MILES TO THE JUNCTION OF THIS ROAD AND AN EXISTING ROAD TO THE NORTHEAST; TURN RIGHT AND PROCEED IN A NORTHEASTERLY, THEN NORTHERLY DIRECTION APPROXIMATELY 1.5 MILES TO THE BEGINNING OF THE PROPOSED ACCESS FOR THE COLIBRI FEDERAL #20H TO THE NORTHWEST; FOLLOW ROAD FLAGS IN A NORTHWESTERLY, THEN WESTERLY DIRECTION APPROXIMATELY 6526' TO THE BEGINNING OF THE PROPOSED ACCESS TO THE SOUTH; FOLLOW ROAD FLAGS IN A SOUTHERLY DIRECTION APPROXIMATELY 15' TO THE PROPOSED LOCATION.

TOTAL DISTANCE FROM THE INTERSECTION OF JAL HIGHWAY/ HWY 128 AND AN EXISTING ROAD TO THE NORTHEAST LOCATED IN THE SE 1/4 OF SECTION 1, T24S, R31E, HIGHWAY/ HWY 128 TO THE PROPOSED LOCATION IS APPROXIMATELY 9.7 MILES.

DRAWN BY: J.M.C.		REVISED: 02-12-14		 CIMAREX ENERGY CO.
DATE DRAWN: 12/11/2013				
 Corporate Office * 85 South 200 East Vernal, UT 84078 * (435) 789-1017				COLIBRI FEDERAL #24H & #25H SECTION 10, T23S, R32E, N.M.P.M. NE 1/4 NW 1/4
ROAD DESCRIPTION				EXHIBIT J