

District I  
1625 N. French Dr., Hobbs, NM 88240  
Phone: (505) 393-6161 Fax: (505) 393-0720  
District II  
111 S. First St., Artesia, NM 88210  
Phone: (505) 748-1283 Fax: (505) 748-9720  
District III  
1000 Rio Brazos Road, Aztec, NM 87410  
Phone: (505) 334-6178 Fax: (505) 334-6170  
District IV  
1220 S. St. Francis Dr., Santa Fe, NM 87505  
Phone: (505) 476-3460 Fax: (505) 476-3462

State of New Mexico  
Energy, Minerals & Natural Resources Department  
OIL CONSERVATION DIVISION  
1220 South St. Francis Dr.  
Santa Fe, NM 87505

Form C-102  
Revised August 1, 2011  
Submit one copy to appropriate  
District Office

HOBBS OCD  
NOV 04 2014

RECEIVED

☐ AMENDED REPORT

WELL LOCATION AND ACREAGE DEDICATION PLAT

<sup>1</sup> API Number <b>30-025-42217</b>	<sup>2</sup> Pool Code <b>97899</b>	<sup>3</sup> Pool Name <b>WC-025 G-06 5253206M; Bone Spring</b>
<sup>4</sup> Property Code	<sup>5</sup> Property Name <b>CHINCOTEAGUE 32 STATE COM</b>	<sup>6</sup> Well Number <b>4H</b>
<sup>7</sup> OGRID No. <b>6137</b>	<sup>8</sup> Operator Name <b>DEVON ENERGY PRODUCTION COMPANY, L.P.</b>	<sup>9</sup> Elevation <b>3470.9</b>

<sup>10</sup> Surface Location

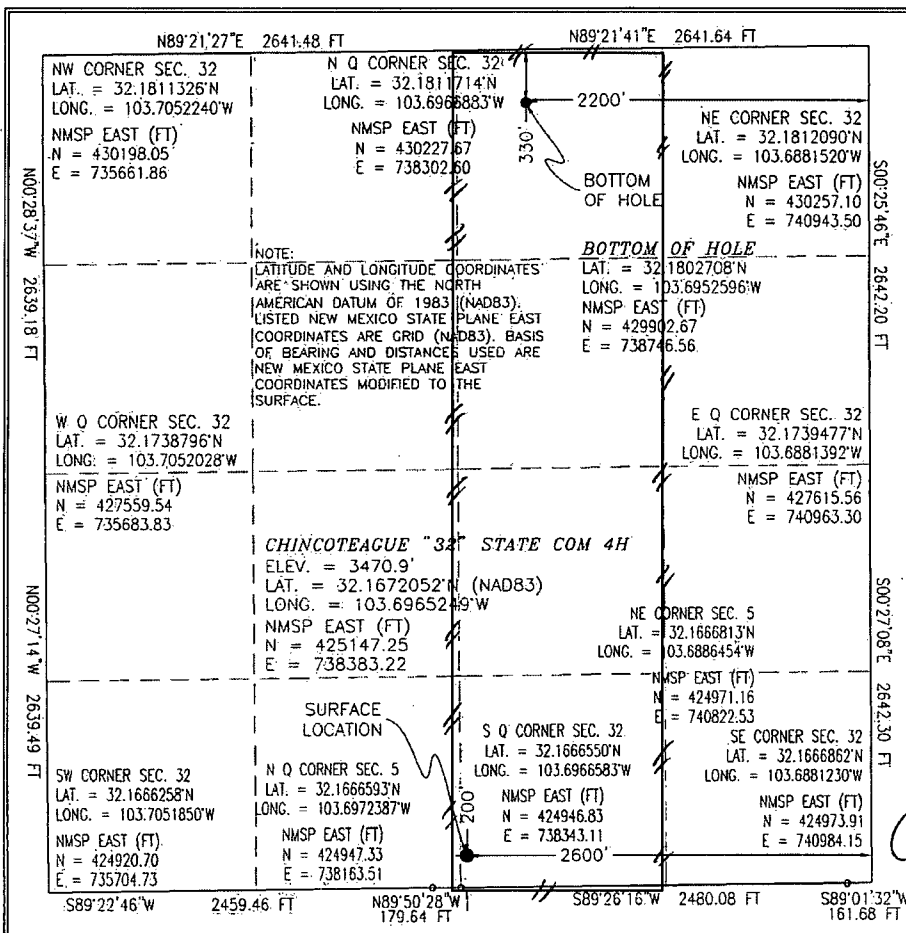
UL or lot no.	Section	Township	Range	Lot Idn	Feet from the	North/South line	Feet from the	East/West line	County
<b>O</b>	<b>32</b>	<b>24 S</b>	<b>32 E</b>		<b>200</b>	<b>SOUTH</b>	<b>2600</b>	<b>EAST</b>	<b>LEA</b>

<sup>11</sup> Bottom Hole Location If Different From Surface

UL or lot no.	Section	Township	Range	Lot Idn	Feet from the	North/South line	Feet from the	East/West line	County
<b>B</b>	<b>32</b>	<b>24 S</b>	<b>32 E</b>		<b>330</b>	<b>NORTH</b>	<b>2200</b>	<b>EAST</b>	<b>LEA</b>

<sup>12</sup> Dedicated Acres <b>160 ac</b>	<sup>13</sup> Joint or Infill	<sup>14</sup> Consolidation Code	<sup>15</sup> Order No.
------------------------------------------------	-------------------------------	----------------------------------	-------------------------

No allowable will be assigned to this completion until all interests have been consolidated or a non-standard unit has been approved by the division.



<sup>17</sup> OPERATOR CERTIFICATION

I hereby certify that the information contained herein is true and complete to the best of my knowledge and belief, and that this organization either owns a working interest or undivided mineral interest in the land including the proposed bottom hole location or has a right to drill this well at this location pursuant to a contract with an owner of such a mineral or working interest, or to a voluntary pooling agreement or a compulsory pooling order heretofore entered by the division.

Signature: *Trina C. Couch* Date: *10/31/14*

Trina C. Couch, Regulatory Analyst

Printed Name

trina.couch@dmn.com

E-mail Address

<sup>18</sup> SURVEYOR CERTIFICATION

I hereby certify that the well location shown on this plat was plotted from field notes of actual surveys made by me or under my supervision, and that the same is true and correct to the best of my belief.

OCTOBER 2, 2014

Date of Survey

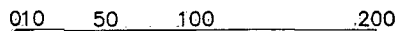
Signature and Seal of Professional Surveyor

Certificate Number: FILMON E. JARAMILLO, PLS 12797

SURVEY NO. 3346

NOV 05 2014

NOTE: LATITUDE AND LONGITUDE COORDINATES ARE SHOWN USING THE NORTH AMERICAN DATUM OF 1983 (NAD83). LISTED NEW MEXICO STATE PLANE EAST COORDINATES ARE GRID (NAD83). BASIS OF BEARING AND DISTANCES USED ARE NEW MEXICO STATE PLANE EAST COORDINATES MODIFIED TO THE SURFACE



SCALE 1" = 100'

**DIRECTIONS TO LOCATION**

FROM STATE HIGHWAY 128 AND CR 1 (ORLA ROAD) GO SOUTH ON CR 1 2.1 MILES. TURN RIGHT ON CALICHE ROAD AND GO WEST 1.0 MILES, TURN LEFT AND GO SOUTH 0.5 MILES, BEND RIGHT AND GO WEST 0.1 MILES, BEND LEFT AND GO SOUTHWEST 470', BEND RIGHT AND GO WEST 0.36 MILES. TURN LEFT AND GO SOUTH-SOUTHWEST 0.43 MILES TO A PROPOSED ROAD SURVEY AND FOLLOW FLAGS EAST 750' TO THE PROPOSED SOUTHWEST PAD CORNER FOR THIS LOCATION.

DEVON ENERGY PRODUCTION COMPANY, L.P.  
CHINCOTEAGUE "32" STATE COM 4H  
LOCATED 200 FT. FROM THE SOUTH LINE  
AND 2600 FT. FROM THE EAST LINE OF  
SECTION 32, TOWNSHIP 24 SOUTH,  
RANGE 32 EAST, N.M.P.M.  
LEA COUNTY, STATE OF NEW MEXICO

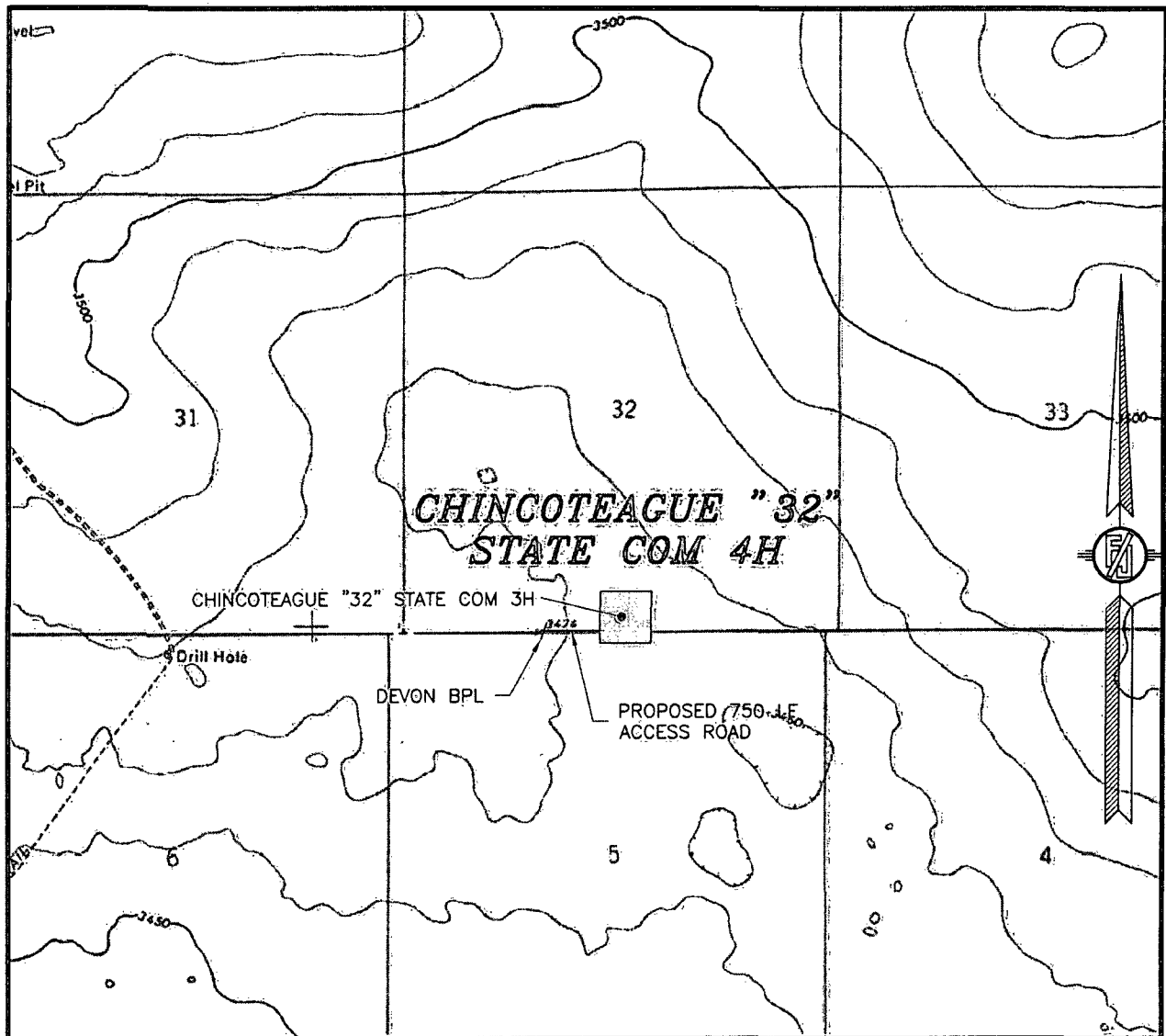
OCTOBER 2, 2014

*SURVEY NO. 3346*

MADRON SURVEYING, INC. 301 SOUTH CANAL CARLSBAD, NEW MEXICO  
(575) 234-3341

301 SOUTH CANAL  
(575) 234-3341

SECTION 32, TOWNSHIP 24 SOUTH, RANGE 32 EAST, N.M.P.M.  
LEA COUNTY, STATE OF NEW MEXICO  
LOCATION VERIFICATION MAP



USGS QUAD MAP:  
PADUCA BREAKS NW

NOT TO SCALE

DEVON ENERGY PRODUCTION COMPANY, L.P.  
**CHINCOTEAGUE "32" STATE COM 4H**  
LOCATED 200 FT. FROM THE SOUTH LINE  
AND 2600 FT. FROM THE EAST LINE OF  
SECTION 32, TOWNSHIP 24 SOUTH,  
RANGE 32 EAST, N.M.P.M.  
LEA COUNTY, STATE OF NEW MEXICO

OCTOBER 2, 2014

SURVEY NO. 3346

MADRON SURVEYING, INC. 301 SOUTH CANAL CARLSBAD, NEW MEXICO  
(575) 234-3341

## VICINITY MAP

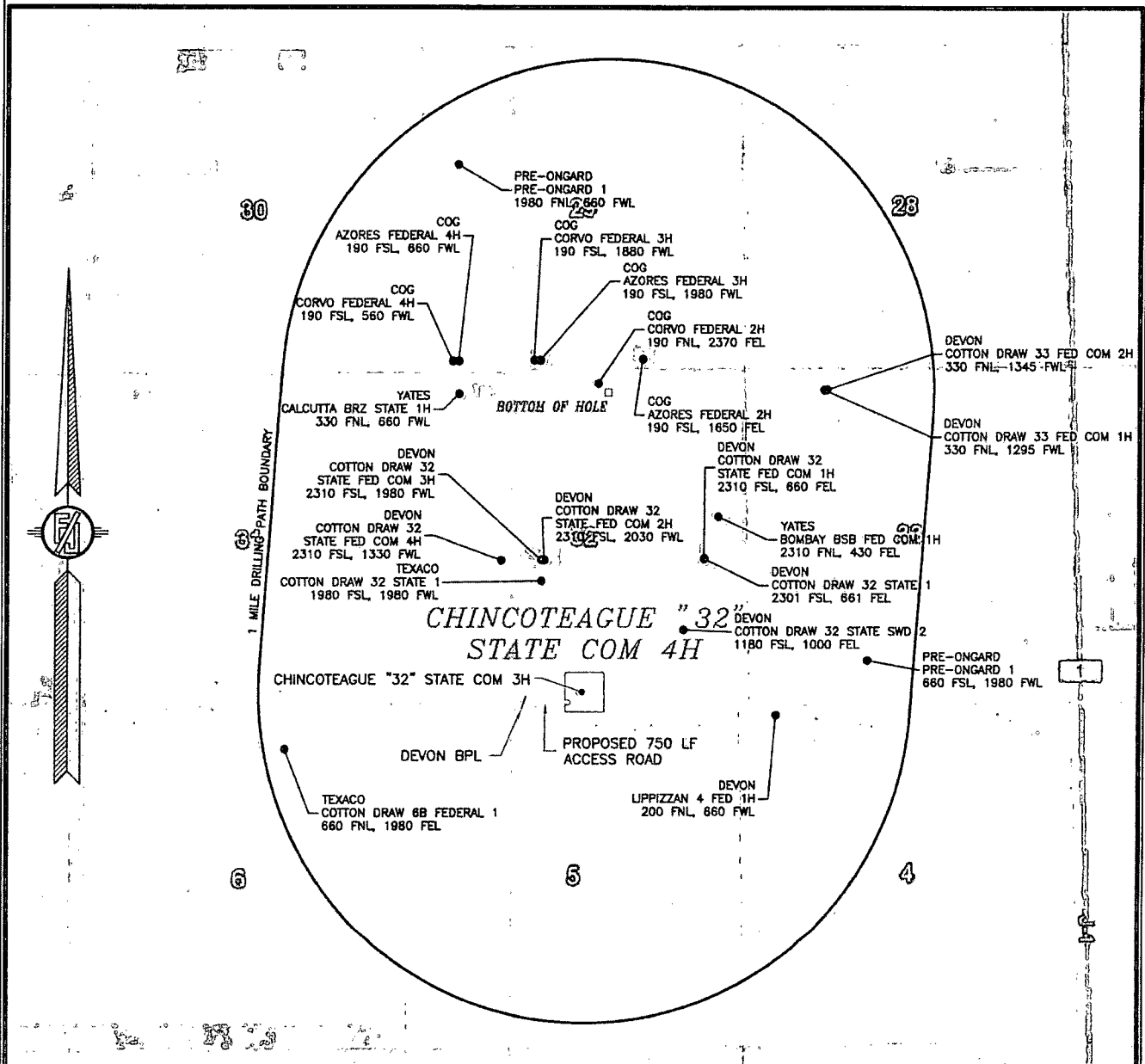


MADRON SURVEYING, INC. 301 SOUTH CANAL  
(575) 234-3341

301 SOUTH CANAL  
(575) 234-3341

CARLSBAD, NEW MEXICO

SECTION 32, TOWNSHIP 24 SOUTH, RANGE 32 EAST, N.M.P.M.  
LEA COUNTY, STATE OF NEW MEXICO  
AERIAL PHOTO



NOT TO SCALE  
AERIAL PHOTO:  
GOOGLE EARTH  
FEBRUARY 2014

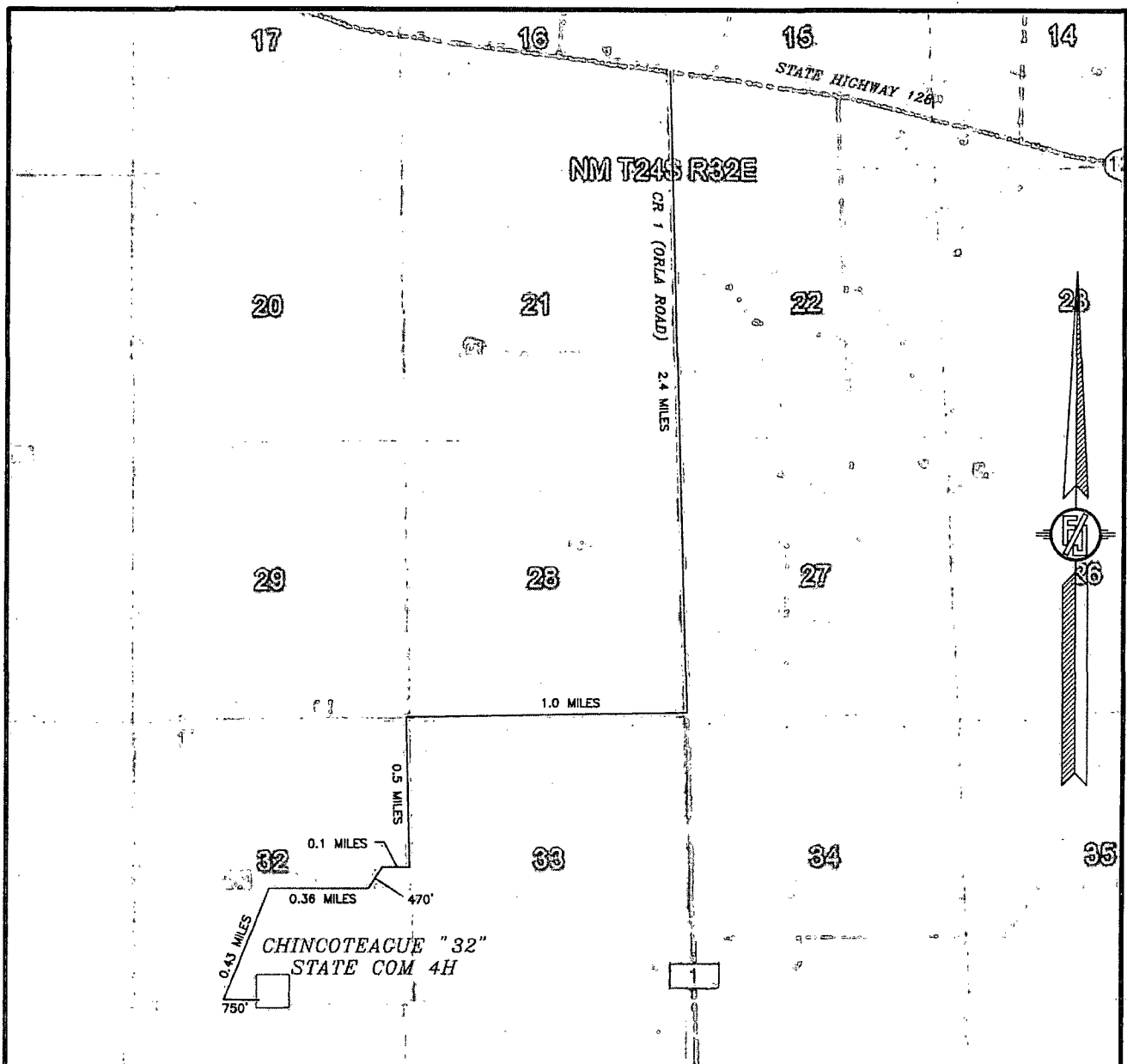
DEVON ENERGY PRODUCTION COMPANY, L.P.  
**CHINCOTEAGUE "32" STATE COM 4H**  
LOCATED 200 FT. FROM THE SOUTH LINE  
AND 2600 FT. FROM THE EAST LINE OF  
SECTION 32, TOWNSHIP 24 SOUTH,  
RANGE 32 EAST, N.M.P.M.  
LEA COUNTY, STATE OF NEW MEXICO

OCTOBER 2, 2014

SURVEY NO. 3346

MADRON SURVEYING, INC. 301 SOUTH CANAL (575) 234-3341 CARLSBAD, NEW MEXICO

SECTION 32, TOWNSHIP 24 SOUTH, RANGE 32 EAST, N.M.P.M.  
LEA COUNTY, STATE OF NEW MEXICO  
ACCESS AERIAL ROUTE MAP



NOT TO SCALE  
AERIAL PHOTO:  
GOOGLE EARTH  
FEBRUARY 2014

DEVON ENERGY PRODUCTION COMPANY, L.P.  
**CHINCOTEAGUE "32" STATE COM 4H**  
LOCATED 200 FT. FROM THE SOUTH LINE  
AND 2600 FT. FROM THE EAST LINE OF  
SECTION 32, TOWNSHIP 24 SOUTH,  
RANGE 32 EAST, N.M.P.M.  
LEA COUNTY, STATE OF NEW MEXICO

OCTOBER 2, 2014

SURVEY NO. 3346

MADRON SURVEYING, INC. 301 SOUTH CANAL (575) 234-3341 CARLSBAD, NEW MEXICO