

District I
1625 N. French Dr., Hobbs, NM 88240
Phone: (505) 393-6161 Fax: (505) 393-6162
District II
811 S. First St., Artesia, NM 88210
Phone: (505) 748-1283 Fax: (505) 748-9720
District III
1000 Rio Brazos Road, Aztec, NM 87410
Phone: (505) 334-6178 Fax: (505) 334-6170
District IV
1220 S. St. Francis Dr., Santa Fe, NM 87505
Phone: (505) 476-3460 Fax: (505) 476-3462

NOV 10 2014

RECEIVED

State of New Mexico
Minerals & Natural Resources Department
OIL CONSERVATION DIVISION
1220 South St. Francis Dr.
Santa Fe, NM 87505

Form C-102
Revised August 1, 2011
Submit one copy to appropriate
District Office
☐ AMENDED REPORT

WELL LOCATION AND ACREAGE DEDICATION PLAT

¹ API Number 30-025-42256	² Pool Code 97597	³ Pool Name Labalina
⁴ Property Code 399.2	⁵ Property Name RAGIN CAJUN 12 FED	⁶ Well Number 2H
⁷ OGRID No. 6137	⁸ Operator Name DEVON ENERGY PRODUCTION COMPANY, L.P.	⁹ Elevation 3277.6

¹⁰ Surface Location

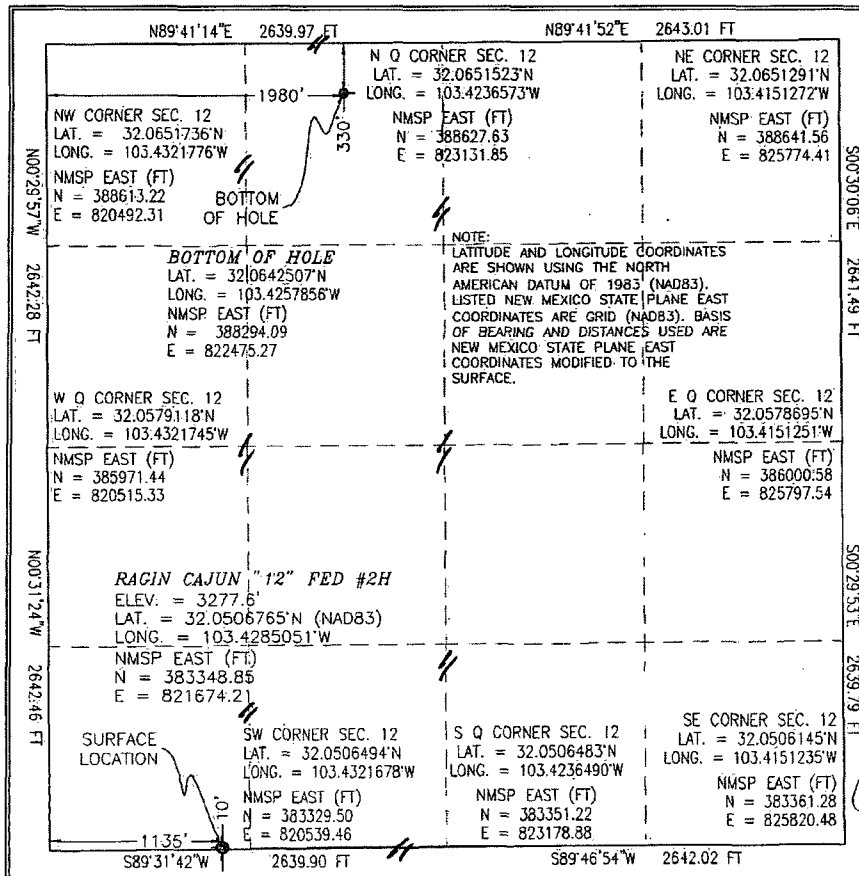
UL or lot no.	Section	Township	Range	Lot Ida	Feet from the	North/South line	Feet from the	East/West line	County
M	12	26 S	34 E		10	SOUTH	1135	WEST	LEA

¹¹ Bottom Hole Location if Different From Surface

UL or lot no.	Section	Township	Range	Lot Ida	Feet from the	North/South line	Feet from the	East/West line	County
C	12	26 S	34 E		330	NORTH	1980	WEST	LEA

¹² Dedicated Acres	¹³ Joint or Infill	¹⁴ Consolidation Code	¹⁵ Order No.
160			

No allowable will be assigned to this completion until all interests have been consolidated or a non-standard unit has been approved by the division.



¹⁷ OPERATOR CERTIFICATION

I hereby certify that the information contained herein is true and complete to the best of my knowledge and belief, and that this organization either owns a working interest or unleased mineral interest in the land including the proposed bottom hole location or has a right to drill this well at this location pursuant to a contract with an owner of such a mineral or working interest, or to a voluntary pooling agreement or a compulsory pooling order, herebefore entered by the division.

Signature: *[Signature]* Date: 5/1/2014

Printed Name: David Cook

E-mail Address: david.cook@dvn.com

¹⁸ SURVEYOR CERTIFICATION

I hereby certify that the well location shown on this plat was plotted from field notes of actual surveys made by me or under my supervision, and that the same is true and correct to the best of my belief.

APRIL 17, 2014
Date of Survey: 12797

Signature and Seal of Professional Surveyor: *[Signature]*
Certificate Number: FILMONT, JABAMELO, PLS 12797
SURVEY NO. 2896

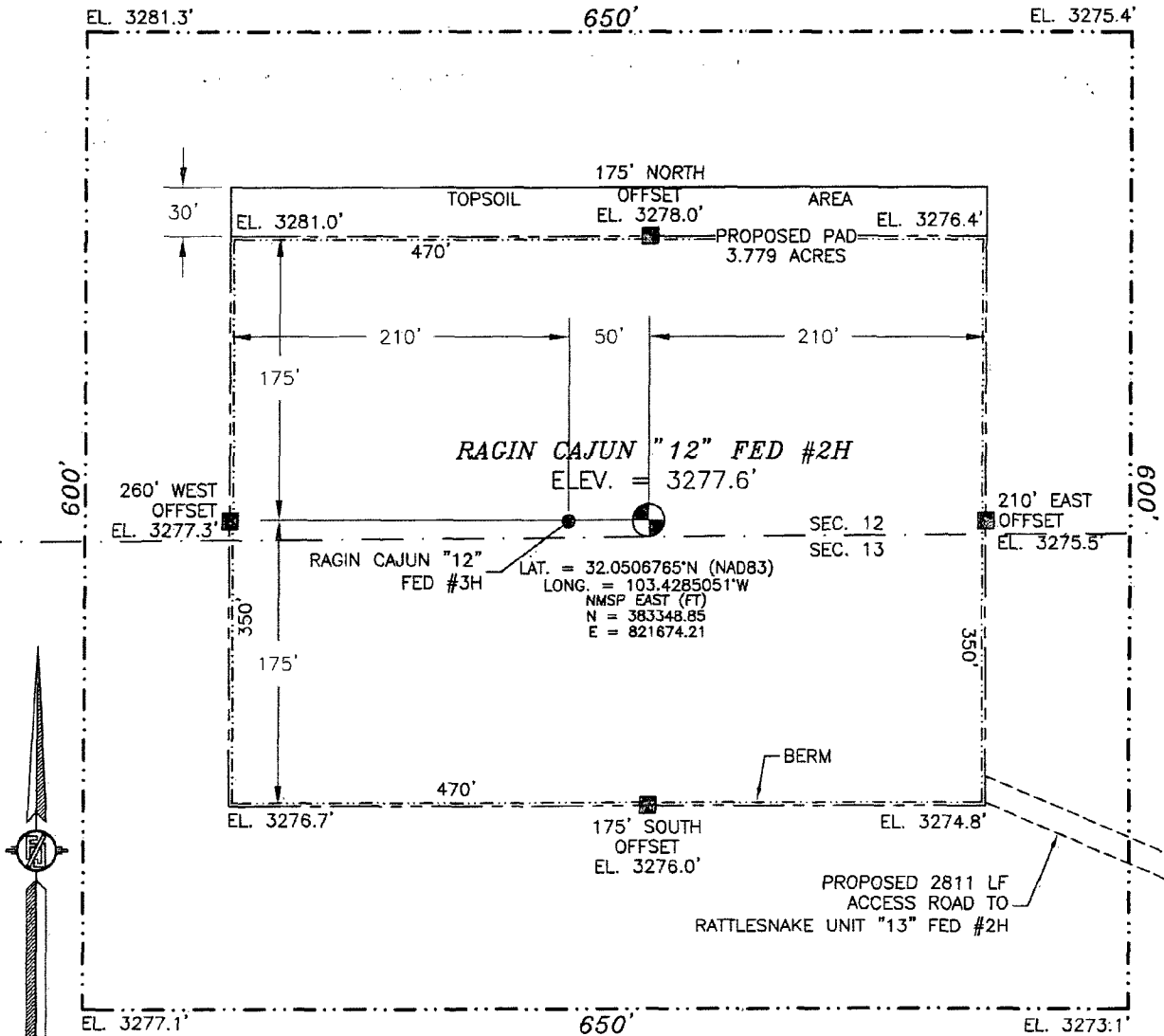
PP: 10 FSL & 1345 FWL

NOV 12 2014

SECTION 12, TOWNSHIP 26 SOUTH, RANGE 34 EAST, N.M.P.M.
LEA COUNTY, STATE OF NEW MEXICO

SITE MAP

NOTE: LATITUDE AND LONGITUDE COORDINATES ARE SHOWN USING THE NORTH AMERICAN DATUM OF 1983 (NAD83). LISTED NEW MEXICO STATE PLANE EAST COORDINATES ARE GRID (NAD83). BASIS OF BEARING AND DISTANCES USED ARE NEW MEXICO STATE PLANE EAST COORDINATES MODIFIED TO THE SURFACE



010 50 100 200

SCALE 1" = 100'

DIRECTIONS TO LOCATION

FROM THE INTERSECTION OF CR 1 (ORLA ROAD) AND CR 2 (BATTLE AXE ROAD) GO EAST ON CR 2 11.9 MILES WHERE ROAD BENDS NORTH AND CONTINUE EAST ON CALICHE PIPE LINE ROAD (EL PASO R/W), GO EAST 8 MILES TO LEASE ROAD GO SOUTH (RIGHT) 1.7 MILES TO YATES WELL "RENEGADE" FROM SOUTHWEST CORNER, FOLLOW FLAGS NORTHWEST 1708' TO RATTLESNAKE UNIT "13" FED #2H, THEN AT SOUTHEAST-EAST PAD CORNER FOLLOW PROPOSED ROAD SURVEY FLAGS SOUTHWEST 1555', THEN NORTHWEST 1256' TO THE PROPOSED SOUTHEAST CORNER OF PAD FOR THIS LOCATION.

DEVON ENERGY PRODUCTION COMPANY, L.P.

RAGIN CAJUN "12" FED #2H

LOCATED 10 FT. FROM THE SOUTH LINE
AND 1135 FT. FROM THE WEST LINE OF
SECTION 12, TOWNSHIP 26 SOUTH,
RANGE 34 EAST, N.M.P.M.

LEA COUNTY, STATE OF NEW MEXICO

APRIL 17, 2014

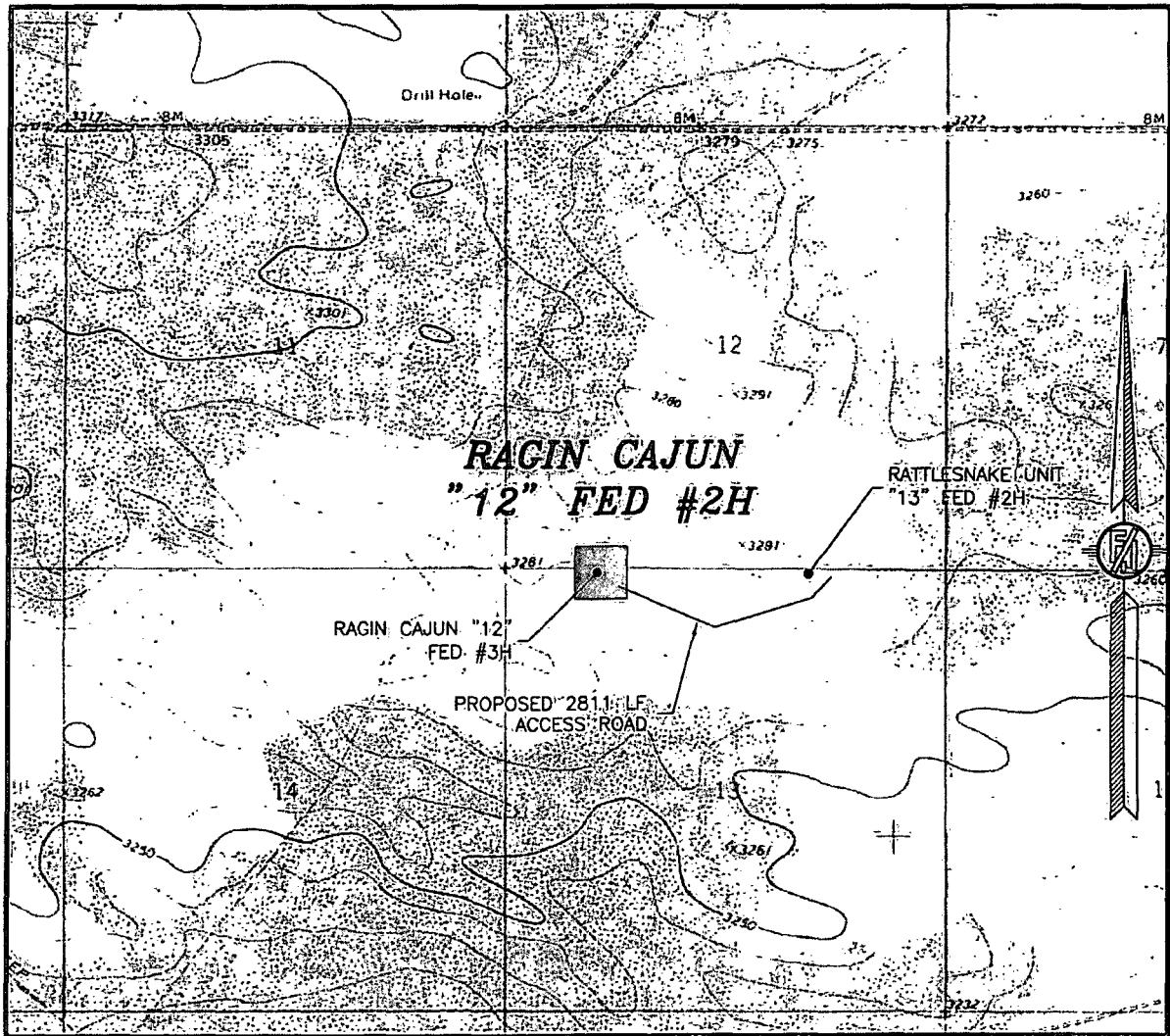
SURVEY NO. 2896

MADRON SURVEYING, INC.

301 SOUTH CANAL
(575) 234-3341

CARLSBAD, NEW MEXICO

SECTION 12, TOWNSHIP 26 SOUTH, RANGE 34 EAST, N.M.P.M.
LEA COUNTY, STATE OF NEW MEXICO
LOCATION VERIFICATION MAP



DEVON ENERGY PRODUCTION COMPANY, L.P.

RAGIN CAJUN "12" FED #2H

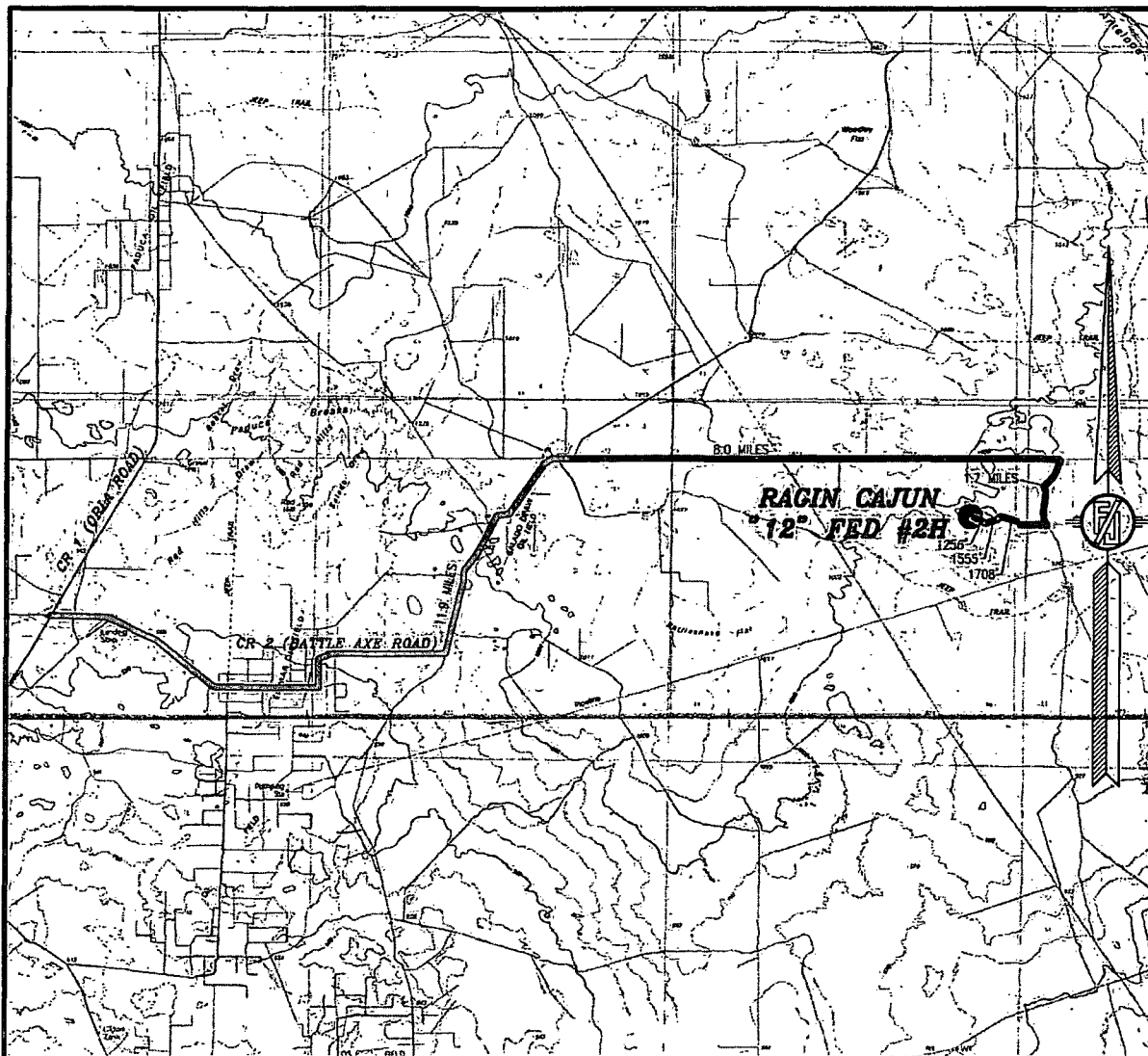
LOCATED 10 FT. FROM THE SOUTH LINE
AND 1135 FT. FROM THE WEST LINE OF
SECTION 12, TOWNSHIP 26 SOUTH,
RANGE 34 EAST, N.M.P.M.
LEA COUNTY, STATE OF NEW MEXICO

APRIL 17, 2014

SURVEY NO. 2896

MADRON SURVEYING, INC. 301 SOUTH CANAL (575) 234-3341 CARLSBAD, NEW MEXICO

SECTION 12, TOWNSHIP 26 SOUTH, RANGE 34 EAST, N.M.P.M.
LEA COUNTY, STATE OF NEW MEXICO
VICINITY MAP



DISTANCES IN MILES

NOT TO SCALE

DEVON ENERGY PRODUCTION COMPANY, L.P.

RAGIN CAJUN "12" FED #2H

LOCATED 10 FT. FROM THE SOUTH LINE
AND 1135 FT. FROM THE WEST LINE OF

SECTION 12, TOWNSHIP 26 SOUTH,
RANGE 34 EAST, N.M.P.M.

LEA COUNTY, STATE OF NEW MEXICO

DIRECTIONS TO LOCATION

FROM THE INTERSECTION OF CR 1 (ORLA ROAD) AND CR 2 (BATTLE AXE ROAD) GO EAST ON CR 2 11.9 MILES WHERE ROAD BENDS NORTH AND CONTINUE EAST ON CALICHE PIPE LINE ROAD (EL PASO R/W), GO EAST 8 MILES TO LEASE ROAD GO SOUTH (RIGHT) 1.7 MILES TO YATES WELL "RENEGADE" FROM SOUTHWEST CORNER. FOLLOW FLAGS NORTHWEST 1708° TO RATTLESNAKE UNIT "13" FED #2H, THEN AT SOUTHEAST-EAST PAD CORNER FOLLOW PROPOSED ROAD SURVEY FLAGS SOUTHWEST 1555°, THEN NORTHWEST 1256° TO THE PROPOSED SOUTHEAST CORNER OF PAD FOR THIS LOCATION.

APRIL 17, 2014

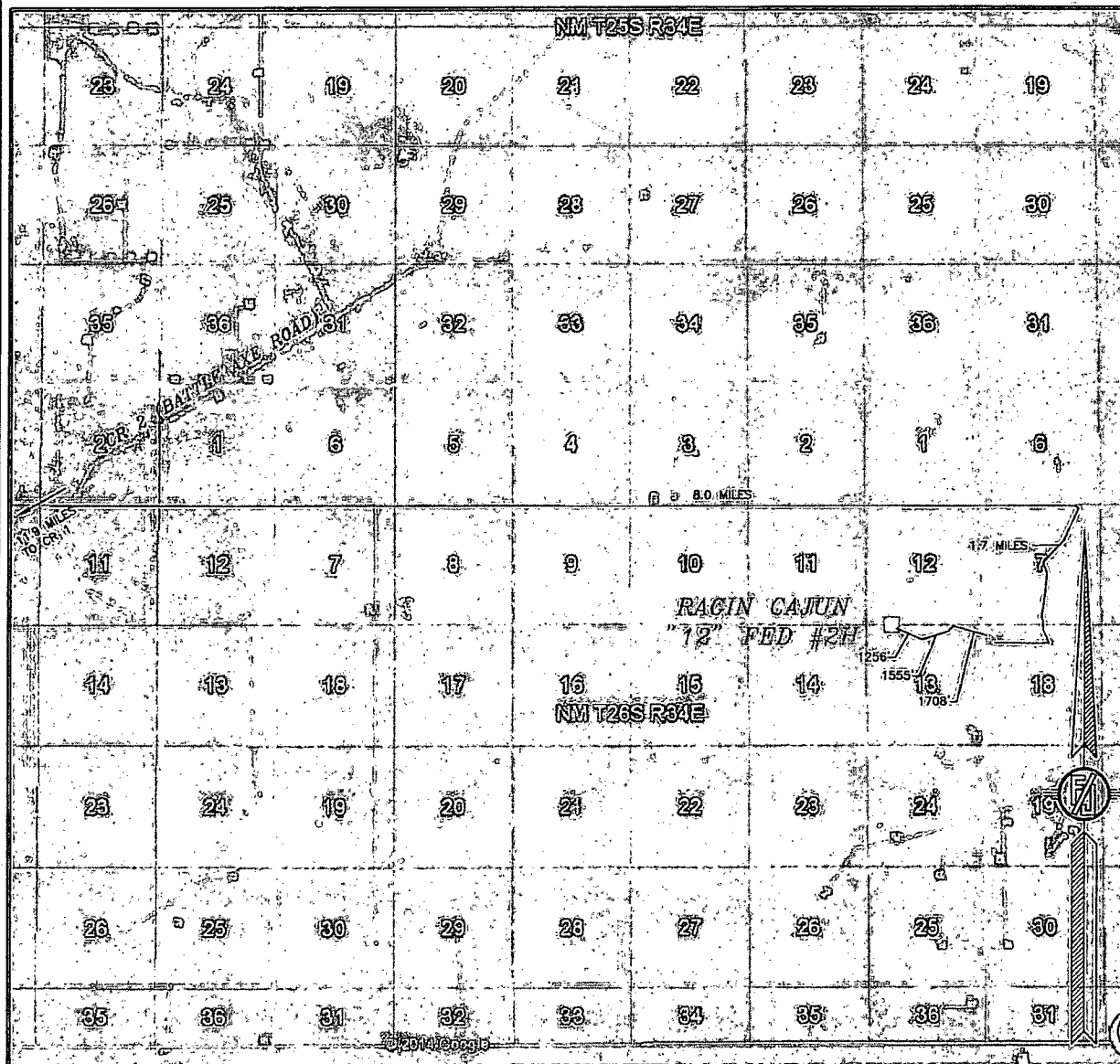
SURVEY NO. 2896

MADRON SURVEYING, INC.

301 SOUTH CANAL
(575) 234-3341

CARLSBAD, NEW MEXICO

SECTION 12, TOWNSHIP 26 SOUTH, RANGE 34 EAST, N.M.P.M.
LEA COUNTY, STATE OF NEW MEXICO
ACCESS AERIAL ROUTE MAP



NOT TO SCALE
AERIAL PHOTO:
GOOGLE EARTH
APRIL 2013

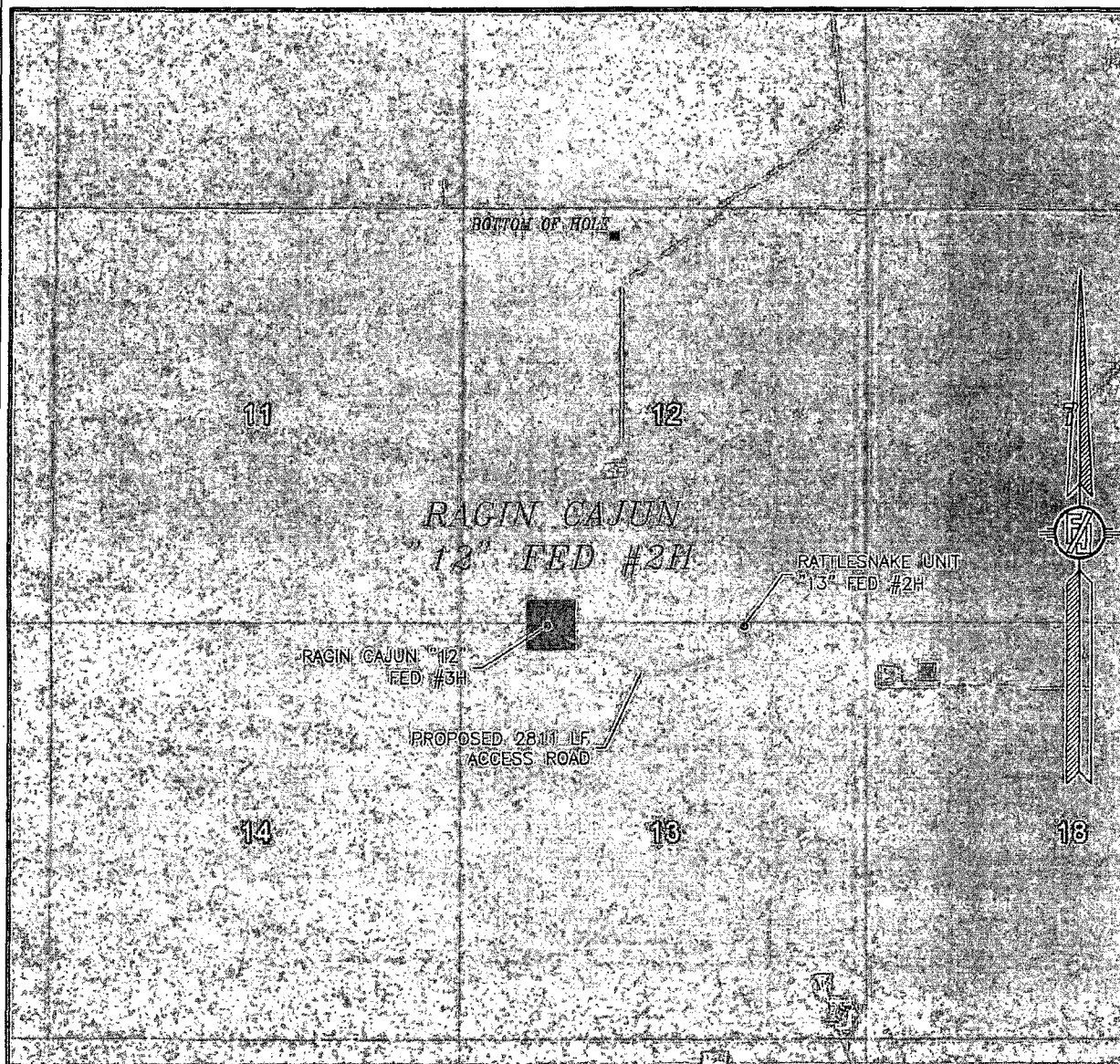
DEVON ENERGY PRODUCTION COMPANY, L.P.
RAGIN CAJUN "12" FED #2H
LOCATED 10 FT. FROM THE SOUTH LINE
AND 1135 FT. FROM THE WEST LINE OF
SECTION 12, TOWNSHIP 26 SOUTH,
RANGE 34 EAST, N.M.P.M.
LEA COUNTY, STATE OF NEW MEXICO

APRIL 17, 2014

SURVEY NO. 2896

MADRON SURVEYING, INC. 301 SOUTH CANAL (575) 234-3341 CARLSBAD, NEW MEXICO

SECTION 12, TOWNSHIP 26 SOUTH, RANGE 34 EAST, N.M.P.M.
LEA COUNTY, STATE OF NEW MEXICO
AERIAL PHOTO



NOT TO SCALE
AERIAL PHOTO:
GOOGLE EARTH
APRIL 2013

DEVON ENERGY PRODUCTION COMPANY, L.P.

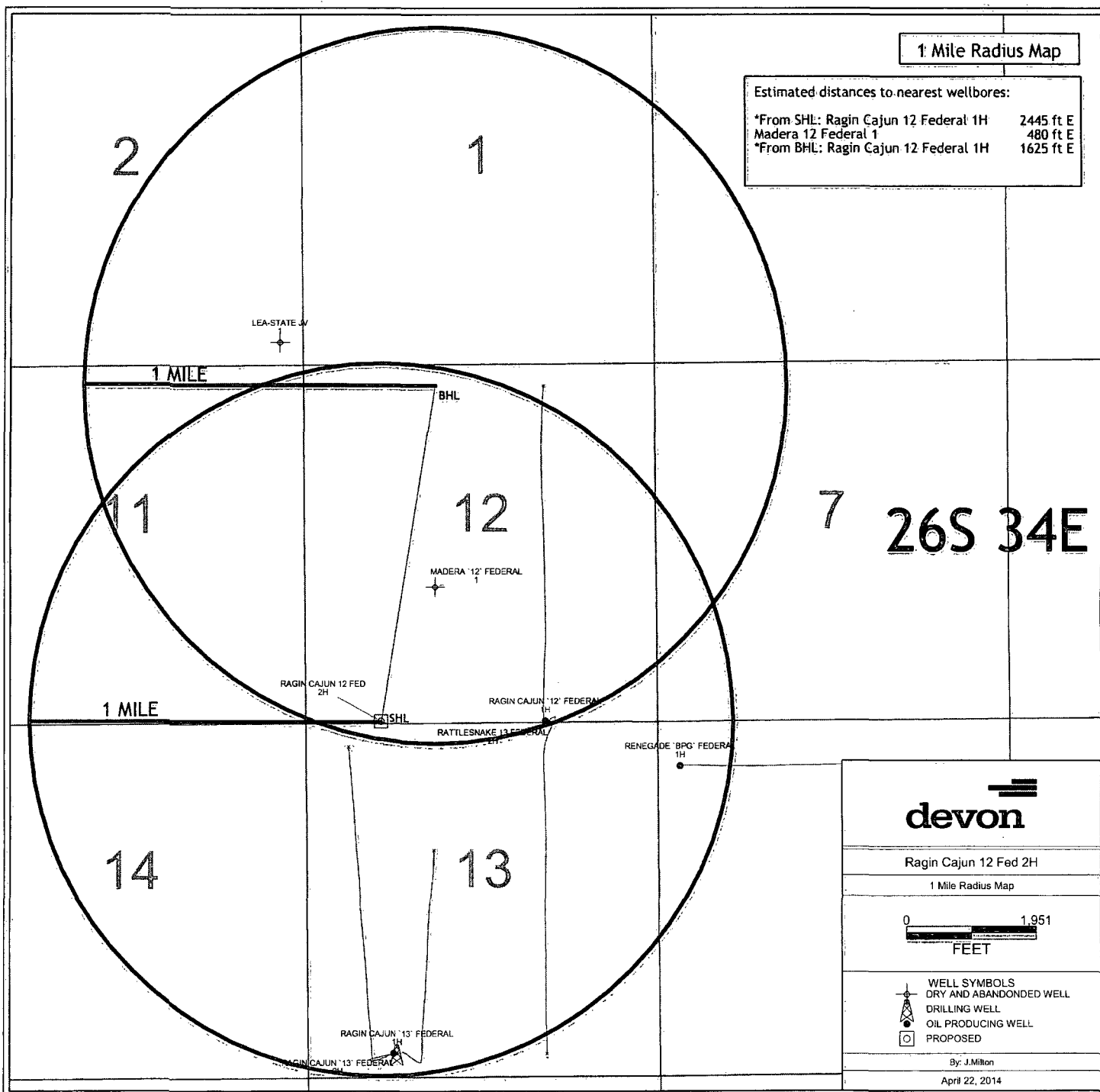
RAGIN CAJUN "12" FED #2H

LOCATED 10 FT. FROM THE SOUTH LINE
AND 1135 FT. FROM THE WEST LINE OF
SECTION 12, TOWNSHIP 26 SOUTH,
RANGE 34 EAST, N.M.P.M.
LEA COUNTY, STATE OF NEW MEXICO

APRIL 17, 2014

SURVEY NO. 2896

MADRON SURVEYING, INC. 301 SOUTH CANAL (575) 234-3341 CARLSBAD, NEW MEXICO



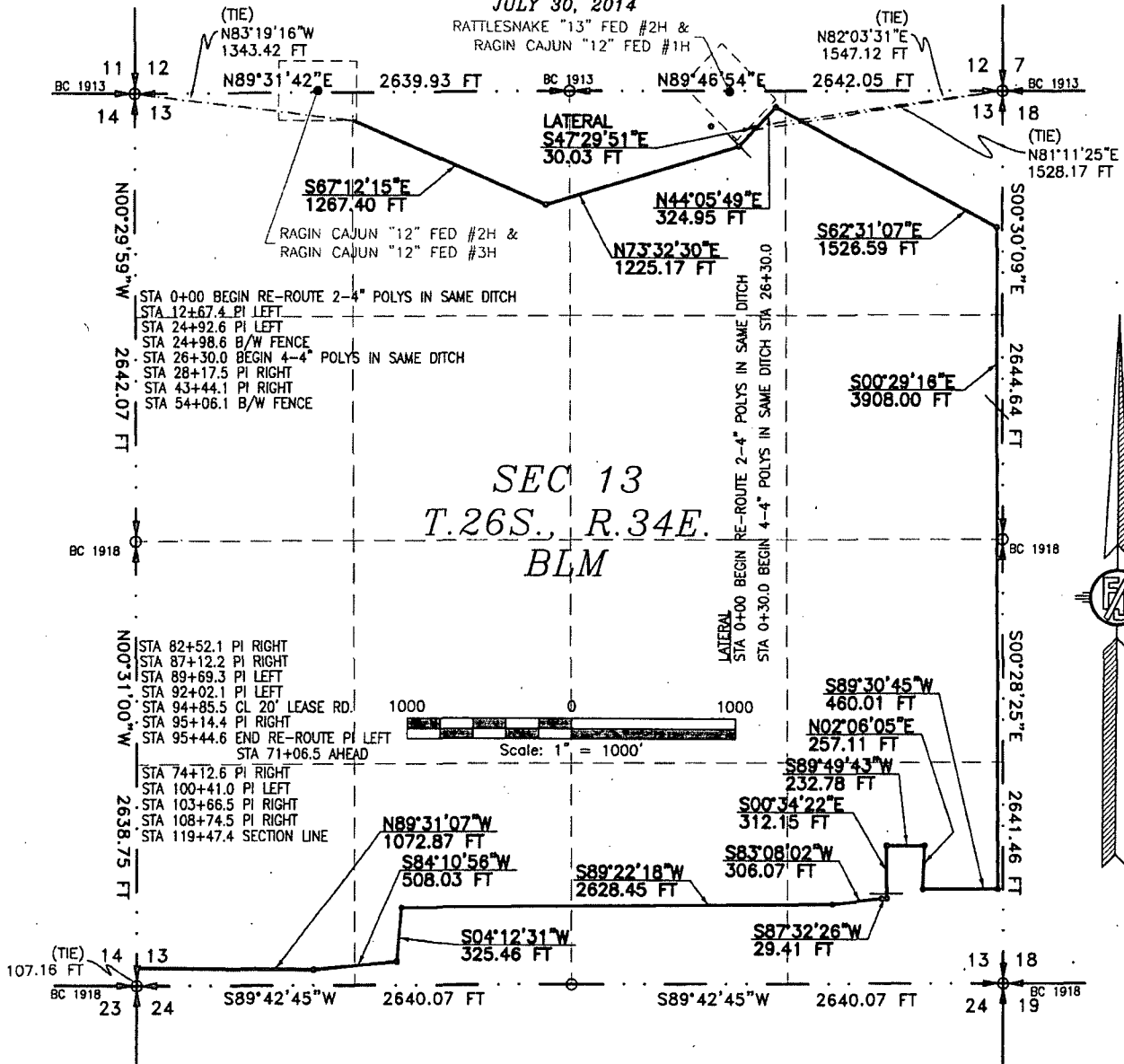
RE-ROUTE 2-4" BURIED IN SAME DITCH POLY FIBER FLEX FLOW LINES FROM THE RAGIN CAJUN "12" FED #2H, RAGIN CAJUN "12" FED #3H & RE-ROUTE 2-4" BURIED IN SAME DITCH POLY FIBER FLEX FLOW LINES FROM THE RATTLESNAKE "13" FED #2H, RAGIN CAJUN "12" FED #1H TO MAKE 4-4" BURIED IN SAME DITCH POLY FIBER FLEX FLOW LINES & 4" BURIED FIBER FLEX POLY FLOW LINE FROM THE RAGIN CAJUN "13" FED #1H & 4" BURIED FIBER FLEX POLY FLOW LINE FROM THE RAGIN CAJUN "13" FED #2H & 4" BURIED FIBER FLEX POLY FLOW LINE FROM THE RAGIN CAJUN "14" FED #1H TO THE RAGIN CAJUN "14" CENTRAL BATTERY

FLOWLINE PLAT

RE-ROUTE 2-4" BURIED IN SAME DITCH POLY FIBER FLEX FLOW LINES FROM THE RAGIN CAJUN "12" FED #2H, RAGIN CAJUN "12" FED #3H & RE-ROUTE 2-4" BURIED IN SAME DITCH POLY FIBER FLEX FLOW LINES FROM THE RATTLESNAKE "13" FED #2H, RAGIN CAJUN "12" FED #1H TO MAKE 4-4" BURIED IN SAME DITCH POLY FIBER FLEX FLOW LINES & 4" BURIED FIBER FLEX POLY FLOW LINE FROM THE RAGIN CAJUN "13" FED #1H & 4" BURIED FIBER FLEX POLY FLOW LINE FROM THE RAGIN CAJUN "13" FED #2H & 4" BURIED FIBER FLEX POLY FLOW LINE FROM THE RAGIN CAJUN "14" FED #1H TO THE RAGIN CAJUN "14" CENTRAL BATTERY

DEVON ENERGY PRODUCTION COMPANY, L.P. CENTERLINE SURVEY OF A PIPELINE CROSSING SECTION 13, TOWNSHIP 26 SOUTH, RANGE 34 EAST, N.M.P.M. LEA COUNTY, STATE OF NEW MEXICO

JULY 30, 2014



SEE NEXT SHEET (2-16) FOR DESCRIPTION
SURVEYOR CERTIFICATE

GENERAL NOTES

- 1.) THE INTENT OF THIS ROUTE SURVEY IS TO ACQUIRE AN EASEMENT.
- 2.) BASIS OF BEARING IS NMSP EAST MODIFIED TO SURFACE COORDINATES.

I, FILMON F. JARAMILLO, A NEW MEXICO PROFESSIONAL SURVEYOR NO. 12797, HEREBY CERTIFY THAT I HAVE CONDUCTED AND AM RESPONSIBLE FOR THIS SURVEY, THAT THIS SURVEY IS TRUE AND CORRECT TO THE BEST OF MY KNOWLEDGE AND BELIEF, AND THAT THIS SURVEY AND PLAT MEET THE MINIMUM STANDARDS FOR LAND SURVEYING IN THE STATE OF NEW MEXICO.

IN WITNESS WHEREOF, THIS CERTIFICATE IS EXECUTED AT CARLSBAD,

NEW MEXICO, THIS DAY OF AUGUST 2014

MADRON SURVEYING, INC.
301 SOUTH CANAL
CARLSBAD, NEW MEXICO 88220
Phone (575) 234-3341

SURVEY NO. 2680C

SHEET: 1-16

MADRON SURVEYING, INC. 301 SOUTH CANAL (575) 234-3341 CARLSBAD, NEW MEXICO

FLOWLINE PLAT

RE-ROUTE 2-4" BURIED IN SAME DITCH POLY FIBER FLEX FLOW LINES FROM THE RAGIN CAJUN "12" FED #2H, RAGIN CAJUN "12" FED #3H & RE-ROUTE 2-4" BURIED IN SAME DITCH POLY FIBER FLEX FLOW LINES FROM THE RATTLESNAKE "13" FED #2H, RAGIN CAJUN "12" FED #1H TO MAKE 4-4" BURIED IN SAME DITCH POLY FIBER FLEX FLOW LINES & 4" BURIED FIBER FLEX POLY FLOW LINE FROM THE RAGIN CAJUN "13" FED #1H & 4" BURIED FIBER FLEX POLY FLOW LINE FROM THE RAGIN CAJUN "13" FED #2H & 4" BURIED FIBER FLEX POLY FLOW LINE FROM THE RAGIN CAJUN "14" FED #1H TO THE RAGIN CAJUN "14" CENTRAL BATTERY

DEVON ENERGY PRODUCTION COMPANY, L.P.
CENTERLINE SURVEY OF A PIPELINE CROSSING
SECTION 13, TOWNSHIP 26 SOUTH, RANGE 34 EAST, N.M.P.M.
LEA COUNTY, STATE OF NEW MEXICO
JULY 30, 2014

DESCRIPTION

A STRIP OF LAND 30 FEET WIDE CROSSING BUREAU OF LAND MANAGEMENT LAND IN SECTION 13, TOWNSHIP 26 SOUTH, RANGE 34 EAST, N.M.P.M., LEA COUNTY, STATE OF NEW MEXICO AND BEING 15 FEET EACH SIDE OF THE FOLLOWING DESCRIBED CENTERLINE SURVEY:

BEGINNING AT A POINT WITHIN THE NE/4 NW/4 OF SAID SECTION 13, TOWNSHIP 26 SOUTH, RANGE 34 EAST, N.M.P.M., WHENCE THE NORTHWEST CORNER OF SAID SECTION 13, TOWNSHIP 26 SOUTH, RANGE 34 EAST, N.M.P.M. BEARS N83°19'16"W, A DISTANCE OF 1343.42 FEET;

THENCE S67°12'15"E A DISTANCE OF 1267.40 FEET TO AN ANGLE POINT OF THE LINE HEREIN DESCRIBED;
THENCE N73°32'30"E A DISTANCE OF 1225.17 FEET TO AN ANGLE POINT OF THE LINE HEREIN DESCRIBED;
THENCE N44°05'49"E A DISTANCE OF 324.95 FEET TO AN ANGLE POINT OF THE LINE HEREIN DESCRIBED;
THENCE S62°31'07"E A DISTANCE OF 1526.59 FEET TO AN ANGLE POINT OF THE LINE HEREIN DESCRIBED;
THENCE S00°29'16"E A DISTANCE OF 3908.00 FEET TO AN ANGLE POINT OF THE LINE HEREIN DESCRIBED;
THENCE S89°30'45"W A DISTANCE OF 460.01 FEET TO AN ANGLE POINT OF THE LINE HEREIN DESCRIBED;
THENCE N02°06'05"E A DISTANCE OF 257.11 FEET TO AN ANGLE POINT OF THE LINE HEREIN DESCRIBED;
THENCE S89°49'43"W A DISTANCE OF 232.78 FEET TO AN ANGLE POINT OF THE LINE HEREIN DESCRIBED;
THENCE S00°34'22"E A DISTANCE OF 312.15 FEET TO AN ANGLE POINT OF THE LINE HEREIN DESCRIBED;
THENCE S87°32'26"W A DISTANCE OF 29.41 FEET TO AN ANGLE POINT OF THE LINE HEREIN DESCRIBED;
THENCE S83°08'02"W A DISTANCE OF 306.07 FEET TO AN ANGLE POINT OF THE LINE HEREIN DESCRIBED;
THENCE S89°22'18"W A DISTANCE OF 2628.45 FEET TO AN ANGLE POINT OF THE LINE HEREIN DESCRIBED;
THENCE S04°12'31"W A DISTANCE OF 325.46 FEET TO AN ANGLE POINT OF THE LINE HEREIN DESCRIBED;
THENCE S84°10'56"W A DISTANCE OF 508.03 FEET TO AN ANGLE POINT OF THE LINE HEREIN DESCRIBED;
THENCE N89°31'07"W A DISTANCE OF 1072.87 FEET THE TERMINUS OF THIS CENTERLINE SURVEY, WHENCE THE SOUTHWEST CORNER OF SAID SECTION 13, TOWNSHIP 26 SOUTH, RANGE 34 EAST, N.M.P.M. BEARS S00°31'00"E, A DISTANCE OF 107.16 FEET;

SAID STRIP OF LAND BEING 14384.45 FEET OR 871.78 RODS IN LENGTH, CONTAINING 9.908 ACRES MORE OR LESS AND BEING ALLOCATED BY FORTIES AS FOLLOWS:

NE/4 NW/4	1417.91 L.F.	85.93 RODS	0.977 ACRES
NW/4 NE/4	1467.01 L.F.	88.91 RODS	1.010 ACRES
NE/4 NE/4	1977.80 L.F.	119.87 RODS	1.362 ACRES
SE/4 NE/4	1322.34 L.F.	80.14 RODS	0.911 ACRES
NE/4 SE/4	1320.72 L.F.	80.04 RODS	0.910 ACRES
SE/4 SE/4	2617.40 L.F.	158.63 RODS	1.803 ACRES
SW/4 SE/4	1320.18 L.F.	80.01 RODS	0.909 ACRES
SE/4 SW/4	1619.84 L.F.	98.17 RODS	1.116 ACRES
SW/4 SW/4	1321.25 L.F.	80.08 RODS	0.910 ACRES

LATERAL

BEGINNING AT A POINT WITHIN THE NW/4 NE/4 OF SAID SECTION 13, TOWNSHIP 26 SOUTH, RANGE 34 EAST, N.M.P.M., WHENCE THE NORTHEAST CORNER OF SAID SECTION 13, TOWNSHIP 26 SOUTH, RANGE 34 EAST, N.M.P.M. BEARS N82°03'31"E, A DISTANCE OF 1547.12 FEET;

THENCE S47°29'51"E A DISTANCE OF 30.03 FEET THE TERMINUS OF THIS CENTERLINE SURVEY, WHENCE THE NORTHEAST CORNER OF SAID SECTION 13, TOWNSHIP 26 SOUTH, RANGE 34 EAST, N.M.P.M. BEARS N81°11'25"E, A DISTANCE OF 1528.17 FEET;

SAID STRIP OF LAND BEING 30.03 FEET OR 1.82 RODS IN LENGTH, CONTAINING 0.021 ACRES MORE OR LESS AND BEING ALLOCATED BY FORTIES AS FOLLOWS:

NW/4 NE/4 30.03 L.F. 1.82 RODS 0.021 ACRES

SURVEYOR CERTIFICATE

I, FILMON F. JARAMILLO, A NEW MEXICO PROFESSIONAL SURVEYOR NO. 12797, HEREBY CERTIFY THAT I HAVE CONDUCTED AND AM RESPONSIBLE FOR THIS SURVEY, THAT THIS SURVEY IS TRUE AND CORRECT TO THE BEST OF MY KNOWLEDGE AND BELIEF, AND THAT THIS SURVEY AND PLAT MEET THE MINIMUM STANDARDS FOR LAND SURVEYING IN THE STATE OF NEW MEXICO.

IN WITNESS WHEREOF, THIS CERTIFICATE IS EXECUTED AT CARLSBAD,

NEW MEXICO, THIS 12 DAY OF AUGUST, 2014

GENERAL NOTES

1.) THE INTENT OF THIS ROUTE SURVEY IS TO ACQUIRE AN EASEMENT.

2.) BASIS OF BEARING IS NMSP EAST MODIFIED TO SURFACE COORDINATES.

MADRON SURVEYING, INC.
301 SOUTH CANAL
CARLSBAD, NEW MEXICO 88220
Phone (575) 234-3341

SHEET: 2-16

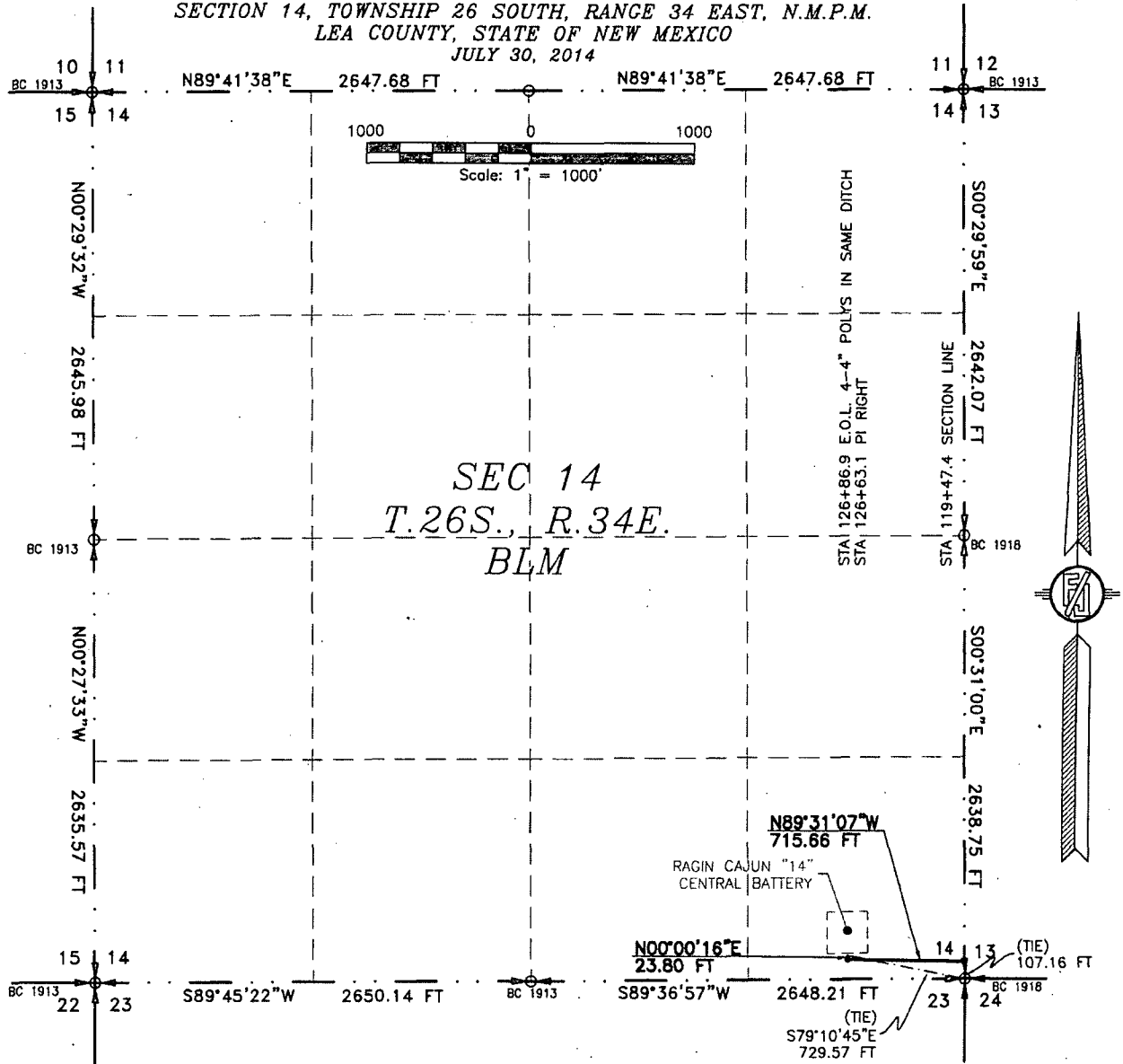
MADRON SURVEYING, INC. 301 SOUTH CANAL CARLSBAD, NEW MEXICO
(575) 234-3341

SURVEY NO. 2680C

FLOWLINE PLAT

RE-ROUTE 2-4" BURIED IN SAME DITCH POLY FIBER FLEX FLOW LINES FROM THE RAGIN CAJUN "12" FED #2H, RAGIN CAJUN "12" FED #3H & RE-ROUTE 2-4" BURIED IN SAME DITCH POLY FIBER FLEX FLOW LINES FROM THE RATTLESNAKE "13" FED #2H, RAGIN CAJUN "12" FED #1H TO MAKE 4-4" BURIED IN SAME DITCH POLY FIBER FLEX FLOW LINES & 4" BURIED FIBER FLEX POLY FLOW LINE FROM THE RAGIN CAJUN "13" FED #1H & 4" BURIED FIBER FLEX POLY FLOW LINE FROM THE RAGIN CAJUN "13" FED #2H & 4" BURIED FIBER FLEX POLY FLOW LINE FROM THE RAGIN CAJUN "14" FED #1H TO THE RAGIN CAJUN "14" CENTRAL BATTERY

DEVON ENERGY PRODUCTION COMPANY, L.P.
CENTERLINE SURVEY OF A PIPELINE CROSSING
SECTION 14, TOWNSHIP 26 SOUTH, RANGE 34 EAST, N.M.P.M.
LEA COUNTY, STATE OF NEW MEXICO
JULY 30, 2014



SEE NEXT SHEET (4-16) FOR DESCRIPTION

SURVEYOR CERTIFICATE

I, FILIMON F. JARAMILLO, A NEW MEXICO PROFESSIONAL SURVEYOR NO. 12797, HEREBY CERTIFY THAT I HAVE CONDUCTED AND AM RESPONSIBLE FOR THIS SURVEY, THAT THIS SURVEY IS TRUE AND CORRECT TO THE BEST OF MY KNOWLEDGE AND BELIEF, AND THAT THIS SURVEY AND PLAT MEET THE MINIMUM STANDARDS FOR LAND SURVEYING IN THE STATE OF NEW MEXICO.

IN WITNESS WHEREOF, THIS CERTIFICATE IS EXECUTED AT CARLSBAD,

NEW MEXICO, THIS 14TH DAY OF AUGUST 2014

GENERAL NOTES

- 1.) THE INTENT OF THIS ROUTE SURVEY IS TO ACQUIRE AN EASEMENT.
- 2.) BASIS OF BEARING IS NMSP EAST MODIFIED TO SURFACE COORDINATES.

MADRON SURVEYING, INC.
301 SOUTH CANAL
CARLSBAD, NEW MEXICO 88220
Phone (575) 234-3341

SHEET: 3-16

MADRON SURVEYING, INC. 301 SOUTH CANAL CARLSBAD, NEW MEXICO

SURVEY NO. 2680C

FLOWLINE PLAT

RE-ROUTE 2-4" BURIED IN SAME DITCH POLY FIBER FLEX FLOW LINES FROM THE RAGIN CAJUN "12" FED #2H, RAGIN CAJUN "12" FED #3H & RE-ROUTE 2-4" BURIED IN SAME DITCH POLY FIBER FLEX FLOW LINES FROM THE RATTLESNAKE "13" FED #2H, RAGIN CAJUN "12" FED #1H TO MAKE 4-4" BURIED IN SAME DITCH POLY FIBER FLEX FLOW LINES & 4" BURIED FIBER FLEX POLY FLOW LINE FROM THE RAGIN CAJUN "13" FED #1H & 4" BURIED FIBER FLEX POLY FLOW LINE FROM THE RAGIN CAJUN "13" FED #2H & 4" BURIED FIBER FLEX POLY FLOW LINE FROM THE RAGIN CAJUN "14" FED #1H TO THE RAGIN CAJUN "14" CENTRAL BATTERY

DEVON ENERGY PRODUCTION COMPANY, L.P.
CENTERLINE SURVEY OF A PIPELINE CROSSING
SECTION 14, TOWNSHIP 26 SOUTH, RANGE 34 EAST, N.M.P.M.
LEA COUNTY, STATE OF NEW MEXICO
JULY 30, 2014

DESCRIPTION

A STRIP OF LAND 30 FEET WIDE CROSSING BUREAU OF LAND MANAGEMENT LAND IN SECTION 14, TOWNSHIP 26 SOUTH, RANGE 34 EAST, N.M.P.M., LEA COUNTY, STATE OF NEW MEXICO AND BEING 15 FEET EACH SIDE OF THE FOLLOWING DESCRIBED CENTERLINE SURVEY:

BEGINNING AT A POINT WITHIN THE SE/4 SE/4 OF SAID SECTION 14, TOWNSHIP 26 SOUTH, RANGE 34 EAST, N.M.P.M., WHENCE THE SOUTHEAST CORNER OF SAID SECTION 14, TOWNSHIP 26 SOUTH, RANGE 34 EAST, N.M.P.M. BEARS S00°31'00"E, A DISTANCE OF 107.16 FEET;

THENCE N89°31'07"W A DISTANCE OF 715.66 FEET TO AN ANGLE POINT OF THE LINE HEREIN DESCRIBED;
THENCE N00°00'16"E A DISTANCE OF 23.80 FEET THE TERMINUS OF THIS CENTERLINE SURVEY, WHENCE THE SOUTHEAST CORNER OF SAID SECTION 14, TOWNSHIP 26 SOUTH, RANGE 34 EAST, N.M.P.M. BEARS S79°10'45"E, A DISTANCE OF 729.57 FEET;

SAID STRIP OF LAND BEING 739.46 FEET OR 44.82 RODS IN LENGTH, CONTAINING 0.509 ACRES MORE OR LESS AND BEING ALLOCATED BY FORTIES AS FOLLOWS:

SE/4 SE/4 739.46 L.F. 44.82 RODS 0.509 ACRES

SURVEYOR CERTIFICATE

I, FILMON F. JARAMILLO, A NEW MEXICO PROFESSIONAL SURVEYOR NO. 12797, HEREBY CERTIFY THAT I HAVE CONDUCTED AND AM RESPONSIBLE FOR THIS SURVEY, THAT THIS SURVEY IS TRUE AND CORRECT TO THE BEST OF MY KNOWLEDGE AND BELIEF, AND THAT THIS SURVEY AND PLAT MEET THE MINIMUM STANDARDS FOR LAND SURVEYING IN THE STATE OF NEW MEXICO.

IN WITNESS WHEREOF, THIS CERTIFICATE IS EXECUTED AT CARLSBAD,

NEW MEXICO, THIS 12TH DAY OF AUGUST 2014

GENERAL NOTES

1.) THE INTENT OF THIS ROUTE SURVEY IS TO ACQUIRE AN EASEMENT.

2.) BASIS OF BEARING IS NMSP EAST MODIFIED TO SURFACE COORDINATES.

MADRON SURVEYING, INC.
301 SOUTH CANAL
CARLSBAD, NEW MEXICO 88220
Phone (575) 234-3341

SHEET: 4-16

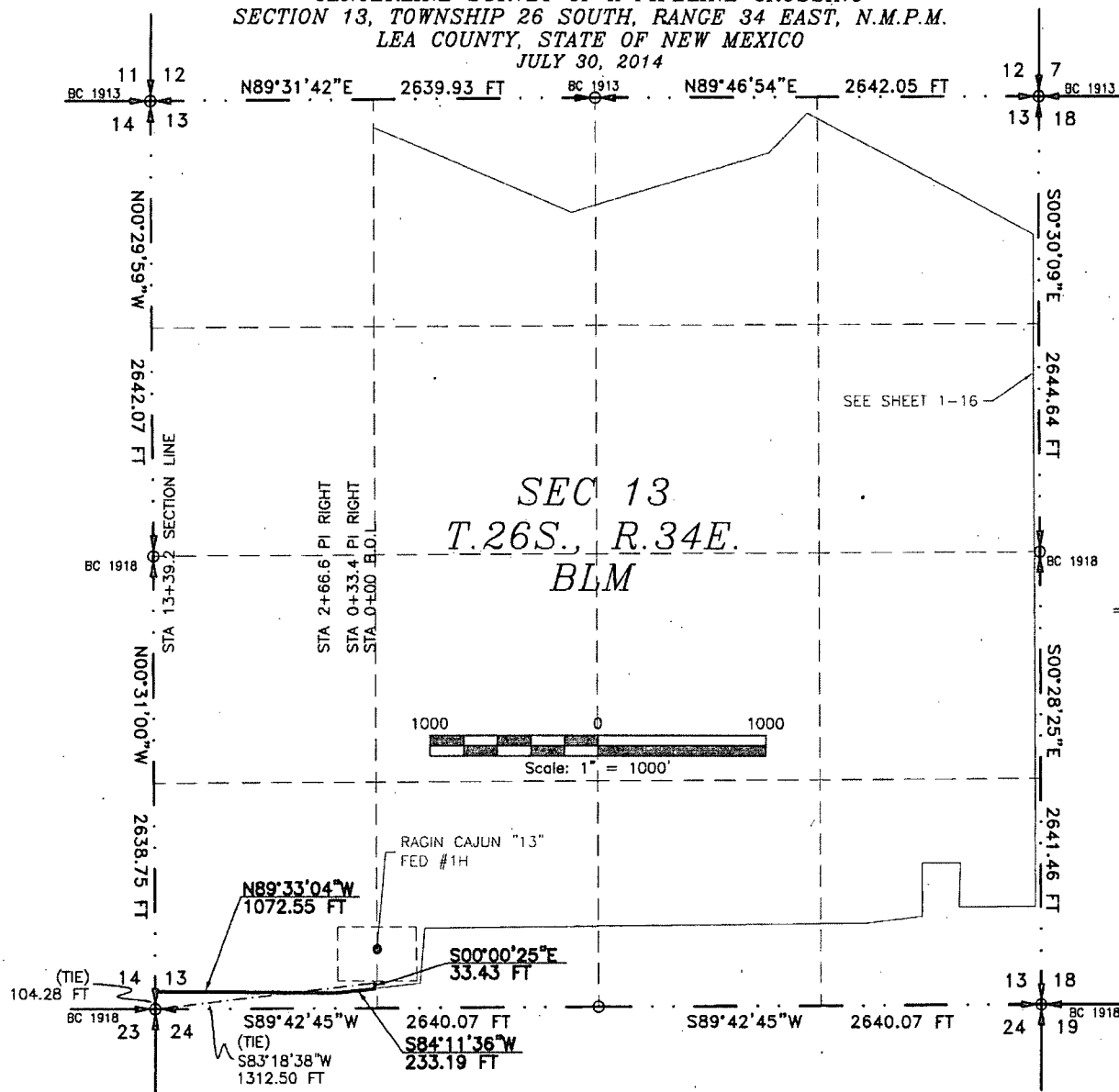
MADRON SURVEYING, INC. 301 SOUTH CANAL
(575) 234-3341 CARLSBAD, NEW MEXICO

SURVEY NO. 2680C

FLOWLINE PLAT

RE-ROUTE 2-4" BURIED IN SAME DITCH POLY FIBER FLEX FLOW LINES FROM THE RAGIN CAJUN "12" FED #2H, RAGIN CAJUN "12" FED #3H & RE-ROUTE 2-4" BURIED IN SAME DITCH POLY FIBER FLEX FLOW LINES FROM THE RATTLESNAKE "13" FED #2H, RAGIN CAJUN "12" FED #1H TO MAKE 4-4" BURIED IN SAME DITCH POLY FIBER FLEX FLOW LINES & 4" BURIED FIBER FLEX POLY FLOW LINE FROM THE RAGIN CAJUN "13" FED #1H & 4" BURIED FIBER FLEX POLY FLOW LINE FROM THE RAGIN CAJUN "13" FED #2H & 4" BURIED FIBER FLEX POLY FLOW LINE FROM THE RAGIN CAJUN "14" FED #1H TO THE RAGIN CAJUN "14" CENTRAL BATTERY

DEVON ENERGY PRODUCTION COMPANY, L.P.
CENTERLINE SURVEY OF A PIPELINE CROSSING
SECTION 13, TOWNSHIP 26 SOUTH, RANGE 34 EAST, N.M.P.M.
LEA COUNTY, STATE OF NEW MEXICO
JULY 30, 2014



SEE NEXT SHEET (6-16) FOR DESCRIPTION

SURVEYOR CERTIFICATE

I, FILMON F. JARAMILLO, A NEW MEXICO PROFESSIONAL SURVEYOR NO. 12797, HEREBY CERTIFY THAT I HAVE CONDUCTED AND AM RESPONSIBLE FOR THIS SURVEY, THAT THIS SURVEY IS TRUE AND CORRECT TO THE BEST OF MY KNOWLEDGE AND BELIEF, AND THAT THIS SURVEY AND PLAT MEET THE MINIMUM STANDARDS FOR LAND SURVEYING IN THE STATE OF NEW MEXICO.

IN WITNESS WHEREOF, THIS CERTIFICATE IS EXECUTED AT CARLSBAD,

NEW MEXICO, THIS DAY OF AUGUST 2014

GENERAL NOTES

- 1.) THE INTENT OF THIS ROUTE SURVEY IS TO ACQUIRE AN EASEMENT.
- 2.) BASIS OF BEARING IS NMSP EAST MODIFIED TO SURFACE COORDINATES.

MADRON SURVEYING, INC.
301 SOUTH CANAL
CARLSBAD, NEW MEXICO 88220
Phone (575) 234-3341

SHEET: 5-16

MADRON SURVEYING, INC.

301 SOUTH CANAL
(575) 234-3341

CARLSBAD, NEW MEXICO

SURVEY NO. 2680C

FLOWLINE PLAT

RE-ROUTE 2-4" BURIED IN SAME DITCH POLY FIBER FLEX FLOW LINES FROM THE RAGIN CAJUN "12" FED #2H, RAGIN CAJUN "12" FED #3H & RE-ROUTE 2-4" BURIED IN SAME DITCH POLY FIBER FLEX FLOW LINES FROM THE RATTLESNAKE "13" FED #2H, RAGIN CAJUN "12" FED #1H TO MAKE 4-4" BURIED IN SAME DITCH POLY FIBER FLEX FLOW LINES & 4" BURIED FIBER FLEX POLY FLOW LINE FROM THE RAGIN CAJUN "13" FED #1H & 4" BURIED FIBER FLEX POLY FLOW LINE FROM THE RAGIN CAJUN "13" FED #2H & 4" BURIED FIBER FLEX POLY FLOW LINE FROM THE RAGIN CAJUN "14" FED #1H TO THE RAGIN CAJUN "14" CENTRAL BATTERY

DEVON ENERGY PRODUCTION COMPANY, L.P.
CENTERLINE SURVEY OF A PIPELINE CROSSING
SECTION 13, TOWNSHIP 26 SOUTH, RANGE 34 EAST, N.M.P.M.
LEA COUNTY, STATE OF NEW MEXICO
JULY 30, 2014

DESCRIPTION

A STRIP OF LAND 30 FEET WIDE CROSSING BUREAU OF LAND MANAGEMENT LAND IN SECTION 13, TOWNSHIP 26 SOUTH, RANGE 34 EAST, N.M.P.M., LEA COUNTY, STATE OF NEW MEXICO AND BEING 15 FEET EACH SIDE OF THE FOLLOWING DESCRIBED CENTERLINE SURVEY:

BEGINNING AT A POINT WITHIN THE SW/4 SW/4 OF SAID SECTION 13, TOWNSHIP 26 SOUTH, RANGE 34 EAST, N.M.P.M., WHENCE THE SOUTHWEST CORNER OF SAID SECTION 13, TOWNSHIP 26 SOUTH, RANGE 34 EAST, N.M.P.M. BEARS S83°18'38"W, A DISTANCE OF 1312.50 FEET;
THENCE S00°00'25"E A DISTANCE OF 33.43 FEET TO AN ANGLE POINT OF THE LINE HEREIN DESCRIBED;
THENCE S84°11'36"W A DISTANCE OF 233.19 FEET TO AN ANGLE POINT OF THE LINE HEREIN DESCRIBED;
THENCE N89°33'04"W A DISTANCE OF 1072.55 FEET THE TERMINUS OF THIS CENTERLINE SURVEY, WHENCE THE SOUTHWEST CORNER OF SAID SECTION 13, TOWNSHIP 26 SOUTH, RANGE 34 EAST, N.M.P.M. BEARS S00°31'00"E, A DISTANCE OF 104.28 FEET;

SAID STRIP OF LAND BEING 1339.17 FEET OR 81.16 RODS IN LENGTH, CONTAINING 0.922 ACRES MORE OR LESS AND BEING ALLOCATED BY FORTIES AS FOLLOWS:

SW/4 SW/4 1339.17 L.F. 81.16 RODS 0.922 ACRES

SURVEYOR CERTIFICATE

I, FILIMON F. JARAMILLO, A NEW MEXICO PROFESSIONAL SURVEYOR NO. 12797, HEREBY CERTIFY THAT I HAVE CONDUCTED AND AM RESPONSIBLE FOR THIS SURVEY, THAT THIS SURVEY IS TRUE AND CORRECT TO THE BEST OF MY KNOWLEDGE AND BELIEF, AND THAT THIS SURVEY AND PLAT MEET THE MINIMUM STANDARDS FOR LAND SURVEYING IN THE STATE OF NEW MEXICO.

IN WITNESS WHEREOF, THIS CERTIFICATE IS EXECUTED AT CARLSBAD, NEW MEXICO, THIS 4TH DAY OF AUGUST 2014.

GENERAL NOTES

1.) THE INTENT OF THIS ROUTE SURVEY IS TO ACQUIRE AN EASEMENT.

2.) BASIS OF BEARING IS NMSP EAST MODIFIED TO SURFACE COORDINATES.

SHEET: 6-16

MADRON SURVEYING, INC.

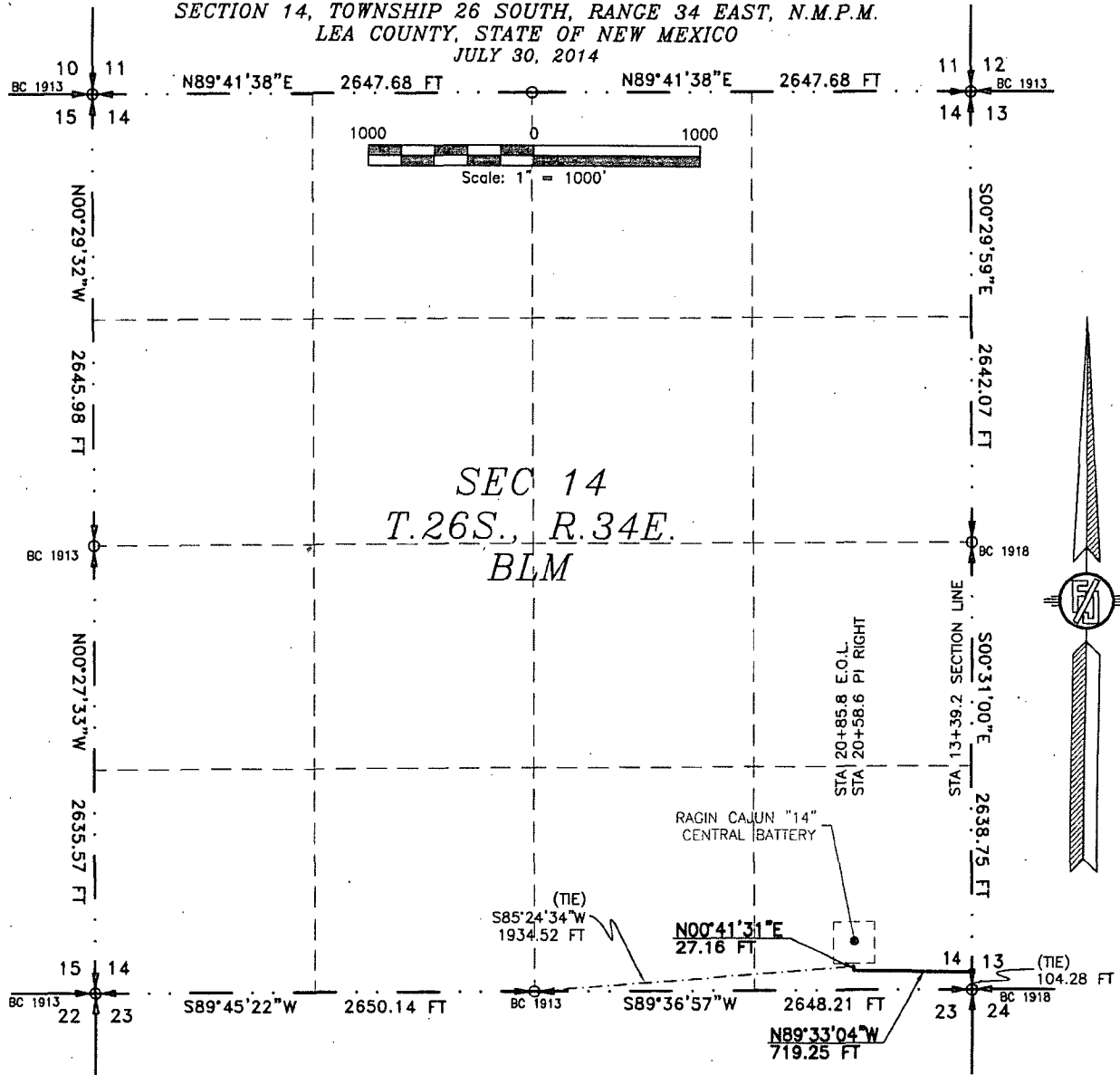
301 SOUTH CANAL
(375) 234-3341

FILIMON F. JARAMILLO - PES #12797
MADRON SURVEYING, INC.
301 SOUTH CANAL
CARLSBAD, NEW MEXICO 88220
Phone (575) 234-3341
SURVEY NO. 2680C
CARLSBAD, NEW MEXICO

FLOWLINE PLAT

RE-ROUTE 2-4" BURIED IN SAME DITCH POLY FIBER FLEX FLOW LINES FROM THE RAGIN CAJUN "12" FED #2H, RAGIN CAJUN "12" FED #3H & RE-ROUTE 2-4" BURIED IN SAME DITCH POLY FIBER FLEX FLOW LINES FROM THE RATTLESNAKE "13" FED #2H, RAGIN CAJUN "12" FED #1H TO MAKE 4-4" BURIED IN SAME DITCH POLY FIBER FLEX FLOW LINES & 4" BURIED FIBER FLEX POLY FLOW LINE FROM THE RAGIN CAJUN "13" FED #1H & 4" BURIED FIBER FLEX POLY FLOW LINE FROM THE RAGIN CAJUN "13" FED #2H & 4" BURIED FIBER FLEX POLY FLOW LINE FROM THE RAGIN CAJUN "14" FED #1H TO THE RAGIN CAJUN "14" CENTRAL BATTERY

DEVON ENERGY PRODUCTION COMPANY, L.P.
CENTERLINE SURVEY OF A PIPELINE CROSSING
SECTION 14, TOWNSHIP 26 SOUTH, RANGE 34 EAST, N.M.P.M.
LEA COUNTY, STATE OF NEW MEXICO
JULY 30, 2014



SEE NEXT SHEET (8-16) FOR DESCRIPTION

SURVEYOR CERTIFICATE

I, FILMON F. JARAMILLO, A NEW MEXICO PROFESSIONAL SURVEYOR NO. 12797, HEREBY CERTIFY THAT I HAVE CONDUCTED AND AM RESPONSIBLE FOR THIS SURVEY, THAT THIS SURVEY IS TRUE AND CORRECT TO THE BEST OF MY KNOWLEDGE AND BELIEF, AND THAT THIS SURVEY AND PLAT MEET THE MINIMUM STANDARDS FOR LAND SURVEYING IN THE STATE OF NEW MEXICO.

IN WITNESS WHEREOF, THIS CERTIFICATE IS EXECUTED AT CARLSBAD,

NEW MEXICO, THIS 17TH DAY OF AUGUST 2014

GENERAL NOTES

1.) THE INTENT OF THIS ROUTE SURVEY IS TO ACQUIRE AN EASEMENT.

2.) BASIS OF BEARING IS NMSP EAST MODIFIED TO SURFACE COORDINATES.

MADRON SURVEYING, INC.
301 SOUTH CANAL
CARLSBAD, NEW MEXICO 88220
Phone (575) 234-3341

SHEET: 7-16

MADRON SURVEYING, INC. 301 SOUTH CANAL CARLSBAD, NEW MEXICO

SURVEY NO. 2680C

FLOWLINE PLAT

RE-ROUTE 2-4" BURIED IN SAME DITCH POLY FIBER FLEX FLOW LINES FROM THE RAGIN CAJUN "12" FED #2H, RAGIN CAJUN "12" FED #3H & RE-ROUTE 2-4" BURIED IN SAME DITCH POLY FIBER FLEX FLOW LINES FROM THE RATTLESNAKE "13" FED #2H, RAGIN CAJUN "12" FED #1H TO MAKE 4-4" BURIED IN SAME DITCH POLY FIBER FLEX FLOW LINES & 4" BURIED FIBER FLEX POLY FLOW LINE FROM THE RAGIN CAJUN "13" FED #1H & 4" BURIED FIBER FLEX POLY FLOW LINE FROM THE RAGIN CAJUN "13" FED #2H & 4" BURIED FIBER FLEX POLY FLOW LINE FROM THE RAGIN CAJUN "14" FED #1H TO THE RAGIN CAJUN "14" CENTRAL BATTERY

DEVON ENERGY PRODUCTION COMPANY, L.P.
CENTERLINE SURVEY OF A PIPELINE CROSSING
SECTION 14, TOWNSHIP 26 SOUTH, RANGE 34 EAST, N.M.P.M.
LEA COUNTY, STATE OF NEW MEXICO
JULY 30, 2014

DESCRIPTION

A STRIP OF LAND 30 FEET WIDE CROSSING BUREAU OF LAND MANAGEMENT LAND IN SECTION 14, TOWNSHIP 26 SOUTH, RANGE 34 EAST, N.M.P.M., LEA COUNTY, STATE OF NEW MEXICO AND BEING 15 FEET EACH SIDE OF THE FOLLOWING DESCRIBED CENTERLINE SURVEY:

BEGINNING AT A POINT WITHIN THE SE/4 SE/4 OF SAID SECTION 14, TOWNSHIP 26 SOUTH, RANGE 34 EAST, N.M.P.M., WHENCE THE SOUTHEAST CORNER OF SAID SECTION 14, TOWNSHIP 26 SOUTH, RANGE 34 EAST, N.M.P.M. BEARS S00°31'00"E, A DISTANCE OF 104.28 FEET;

THENCE N89°33'04"W A DISTANCE OF 719.25 FEET TO AN ANGLE POINT OF THE LINE HEREIN DESCRIBED;

THENCE N00°41'31"E A DISTANCE OF 27.16 FEET THE TERMINUS OF THIS CENTERLINE SURVEY, WHENCE THE SOUTH QUARTER CORNER OF SAID SECTION 14, TOWNSHIP 26 SOUTH, RANGE 34 EAST, N.M.P.M. BEARS S85°24'34"W, A DISTANCE OF 1934.52 FEET;

SAID STRIP OF LAND BEING 746.41 FEET OR 45.24 RODS IN LENGTH, CONTAINING 0.514 ACRES MORE OR LESS AND BEING ALLOCATED BY FORTIES AS FOLLOWS:

SE/4 SE/4 746.41 L.F. 45.24 RODS 0.514 ACRES

SURVEYOR CERTIFICATE

I, FILMON F. JARAMILLO, A NEW MEXICO PROFESSIONAL SURVEYOR NO. 12797, HEREBY CERTIFY THAT I HAVE CONDUCTED AND AM RESPONSIBLE FOR THIS SURVEY, THAT THIS SURVEY IS TRUE AND CORRECT TO THE BEST OF MY KNOWLEDGE AND BELIEF, AND THAT THIS SURVEY AND PLAT MEET THE MINIMUM STANDARDS FOR LAND SURVEYING IN THE STATE OF NEW MEXICO.

IN WITNESS WHEREOF, THIS CERTIFICATE IS EXECUTED AT CARLSBAD, NEW MEXICO, THIS 11TH DAY OF AUGUST 2014

GENERAL NOTES

1.) THE INTENT OF THIS ROUTE SURVEY IS TO ACQUIRE AN EASEMENT.

2.) BASIS OF BEARING IS NMSP EAST MODIFIED TO SURFACE COORDINATES.

MADRON SURVEYING, INC.
301 SOUTH CANAL
CARLSBAD, NEW MEXICO 88220
Phone (575) 234-3341

SHEET: 8-16

MADRON SURVEYING, INC.

301 SOUTH CANAL
(575) 234-3341

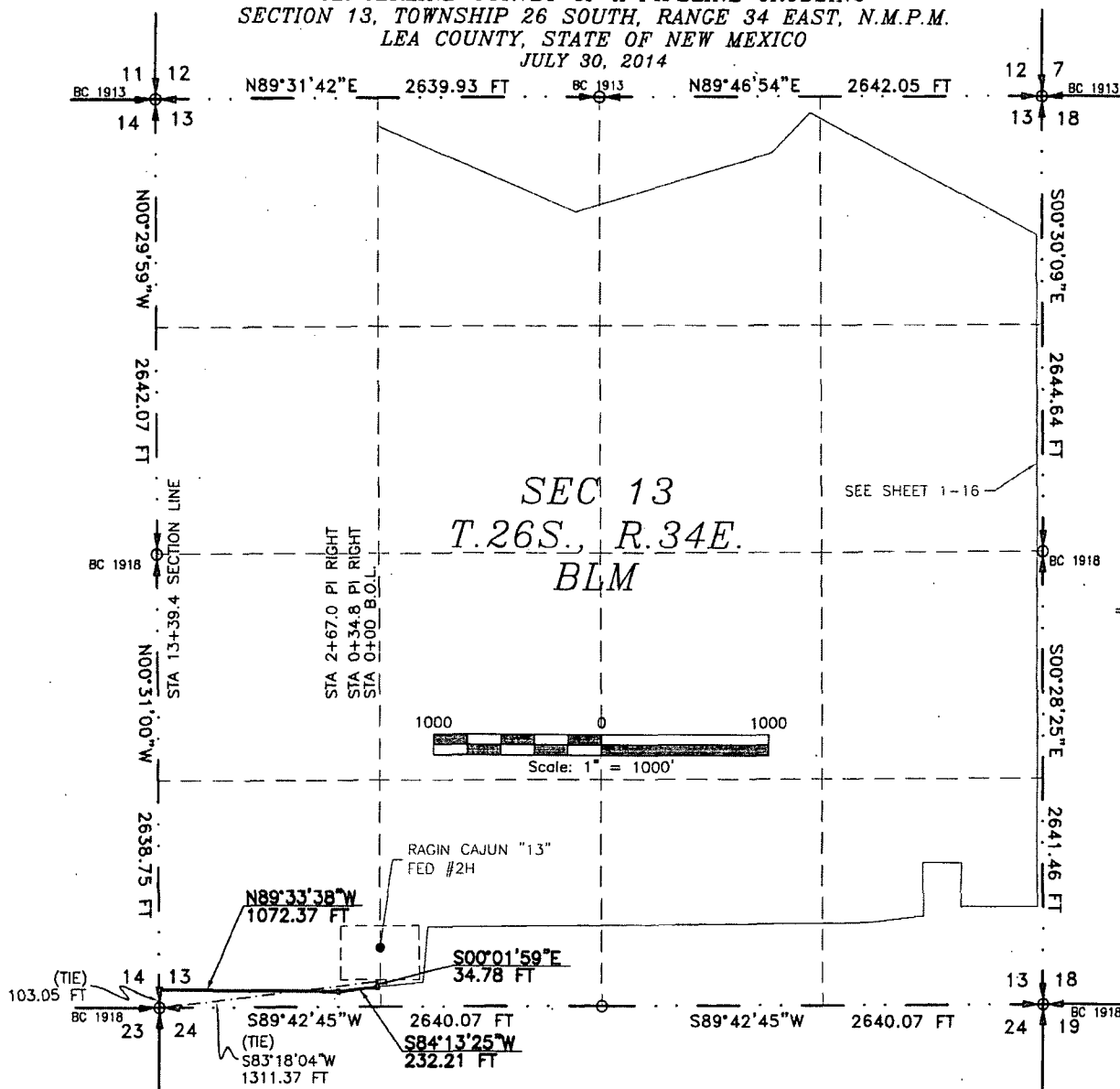
SURVEY NO. 2680C

CARLSBAD, NEW MEXICO

FLOWLINE PLAT

RE-ROUTE 2-4" BURIED IN SAME DITCH POLY FIBER FLEX FLOW LINES FROM THE RAGIN CAJUN "12" FED #2H, RAGIN CAJUN "12" FED #3H & RE-ROUTE 2-4" BURIED IN SAME DITCH POLY FIBER FLEX FLOW LINES FROM THE RATTLESNAKE "13" FED #2H, RAGIN CAJUN "12" FED #1H TO MAKE 4-4" BURIED IN SAME DITCH POLY FIBER FLEX FLOW LINES & 4" BURIED FIBER FLEX POLY FLOW LINE FROM THE RAGIN CAJUN "13" FED #1H & 4" BURIED FIBER FLEX POLY FLOW LINE FROM THE RAGIN CAJUN "13" FED #2H & 4" BURIED FIBER FLEX POLY FLOW LINE FROM THE RAGIN CAJUN "14" FED #1H TO THE RAGIN CAJUN "14" CENTRAL BATTERY

DEVON ENERGY PRODUCTION COMPANY, L.P.
CENTERLINE SURVEY OF A PIPELINE CROSSING
SECTION 13, TOWNSHIP 26 SOUTH, RANGE 34 EAST, N.M.P.M.
LEA COUNTY, STATE OF NEW MEXICO
JULY 30, 2014



SEE NEXT SHEET (10-16) FOR DESCRIPTION

SURVEYOR CERTIFICATE

I, FILMON F. JARAMILLO, A NEW MEXICO PROFESSIONAL SURVEYOR NO. 12797, HEREBY CERTIFY THAT I HAVE CONDUCTED AND AM RESPONSIBLE FOR THIS SURVEY, THAT THIS SURVEY IS TRUE AND CORRECT TO THE BEST OF MY KNOWLEDGE AND BELIEF, AND THAT THIS SURVEY AND PLAT MEET THE MINIMUM STANDARDS FOR LAND SURVEYING IN THE STATE OF NEW MEXICO.

IN WITNESS WHEREOF, THIS CERTIFICATE IS EXECUTED AT CARLSBAD, NEW MEXICO, THIS 17TH DAY OF AUGUST 2014

GENERAL NOTES

- 1.) THE INTENT OF THIS ROUTE SURVEY IS TO ACQUIRE AN EASEMENT.
- 2.) BASIS OF BEARING IS NMSP EAST MODIFIED TO SURFACE COORDINATES.

MADRON SURVEYING, INC.
301 SOUTH CANAL
CARLSBAD, NEW MEXICO 88220
Phone (575) 234-3341

SHEET: 9-16

MADRON SURVEYING, INC.

301 SOUTH CANAL
(575) 234-3341

SURVEY NO. 2680C
CARLSBAD, NEW MEXICO

FLOWLINE PLAT

RE-ROUTE 2-4" BURIED IN SAME DITCH POLY FIBER FLEX FLOW LINES FROM THE RAGIN CAJUN "12" FED #2H, RAGIN CAJUN "12" FED #3H & RE-ROUTE 2-4" BURIED IN SAME DITCH POLY FIBER FLEX FLOW LINES FROM THE RATTLESNAKE "13" FED #2H, RAGIN CAJUN "12" FED #1H TO MAKE 4-4" BURIED IN SAME DITCH POLY FIBER FLEX FLOW LINES & 4" BURIED FIBER FLEX POLY FLOW LINE FROM THE RAGIN CAJUN "13" FED #1H & 4" BURIED FIBER FLEX POLY FLOW LINE FROM THE RAGIN CAJUN "13" FED #2H & 4" BURIED FIBER FLEX POLY FLOW LINE FROM THE RAGIN CAJUN "14" FED #1H TO THE RAGIN CAJUN "14" CENTRAL BATTERY

DEVON ENERGY PRODUCTION COMPANY, L.P.
CENTERLINE SURVEY OF A PIPELINE CROSSING
SECTION 13, TOWNSHIP 26 SOUTH, RANGE 34 EAST, N.M.P.M.
LEA COUNTY, STATE OF NEW MEXICO
JULY 30, 2014

DESCRIPTION

A STRIP OF LAND 30 FEET WIDE CROSSING BUREAU OF LAND MANAGEMENT LAND IN SECTION 13, TOWNSHIP 26 SOUTH, RANGE 34 EAST, N.M.P.M., LEA COUNTY, STATE OF NEW MEXICO AND BEING 15 FEET EACH SIDE OF THE FOLLOWING DESCRIBED CENTERLINE SURVEY:

BEGINNING AT A POINT WITHIN THE SW/4 SW/4 OF SAID SECTION 13, TOWNSHIP 26 SOUTH, RANGE 34 EAST, N.M.P.M., WHENCE THE SOUTHWEST CORNER OF SAID SECTION 13, TOWNSHIP 26 SOUTH, RANGE 34 EAST, N.M.P.M. BEARS S83°18'04"W, A DISTANCE OF 1311.37 FEET;

THENCE S00°01'59"E A DISTANCE OF 34.78 FEET TO AN ANGLE POINT OF THE LINE HEREIN DESCRIBED;

THENCE S84°13'25"W A DISTANCE OF 232.21 FEET TO AN ANGLE POINT OF THE LINE HEREIN DESCRIBED;

THENCE N89°33'38"W A DISTANCE OF 1072.37 FEET THE TERMINUS OF THIS CENTERLINE SURVEY, WHENCE THE SOUTHWEST CORNER OF SAID SECTION 13, TOWNSHIP 26 SOUTH, RANGE 34 EAST, N.M.P.M. BEARS S00°31'00"E, A DISTANCE OF 103.05 FEET;

SAID STRIP OF LAND BEING 1339.36 FEET OR 81.17 RODS IN LENGTH, CONTAINING 0.922 ACRES MORE OR LESS AND BEING ALLOCATED BY FORTIES AS FOLLOWS:

SW/4 SW/4 1339.36 L.F. 81.17 RODS 0.922 ACRES

SURVEYOR CERTIFICATE

I, FILMON F. JARAMILLO, A NEW MEXICO PROFESSIONAL SURVEYOR NO. 12797, HEREBY CERTIFY THAT I HAVE CONDUCTED AND AM RESPONSIBLE FOR THIS SURVEY, THAT THIS SURVEY IS TRUE AND CORRECT TO THE BEST OF MY KNOWLEDGE AND BELIEF, AND THAT THIS SURVEY AND PLAT MEET THE MINIMUM STANDARDS FOR LAND SURVEYING IN THE STATE OF NEW MEXICO.

IN WITNESS WHEREOF, THIS CERTIFICATE IS EXECUTED AT CARLSBAD,

NEW MEXICO, THIS 11 DAY OF AUGUST 2014

GENERAL NOTES

1.) THE INTENT OF THIS ROUTE SURVEY IS TO ACQUIRE AN EASEMENT.

2.) BASIS OF BEARING IS NMSP EAST MODIFIED TO SURFACE COORDINATES.

MADRON SURVEYING, INC.
301 SOUTH CANAL
CARLSBAD, NEW MEXICO 88220
Phone (575) 234-3341

SHEET: 10-16

MADRON SURVEYING, INC.

301 SOUTH CANAL
(575) 234-3341

SURVEY NO. 2680C
CARLSBAD, NEW MEXICO

RE-ROUTE 2-4" BURIED IN SAME DITCH POLY FIBER FLEX FLOW LINES FROM THE RAGIN CAJUN "12" FED #2H, RAGIN CAJUN "12" FED #3H & RE-ROUTE 2-4" BURIED IN SAME DITCH POLY FIBER FLEX FLOW LINES FROM THE RATTLESNAKE "13" FED #2H, RAGIN CAJUN "12" FED #1H TO MAKE 4-4" BURIED IN SAME DITCH POLY FIBER FLEX FLOW LINES & 4" BURIED FIBER FLEX POLY FLOW LINE FROM THE RAGIN CAJUN "13" FED #1H & 4" BURIED FIBER FLEX POLY FLOW LINE FROM THE RAGIN CAJUN "13" FED #2H & 4" BURIED FIBER FLEX POLY FLOW LINE FROM THE RAGIN CAJUN "14" FED #1H TO THE RAGIN CAJUN "14" CENTRAL BATTERY

SECTION 14, TOWNSHIP 26 SOUTH, RANGE 34 EAST, N.M.P.M.
LEA COUNTY, STATE OF NEW MEXICO
JULY 30, 2014

10 11
BC 1913 15 14
N89°41'38"E 2647.68 FT
1000 0 1000
Scale: 1" = 1000'
N89°41'38"E 2647.68 FT
11 12
BC 1913 14 13
S00°29'59"E 2642.07 FT
S00°31'00"E 2638.75 FT
SECTION LINE
STA 20+88.7 E.O.L.
STA 20+60.0 PI RIGHT
S00°31'00"E 2638.75 FT
BC 1918
S89°45'22"W 2650.14 FT
S89°36'57"W 2648.21 FT
N89°33'38"W 720.40 FT
N01°12'23"E 28.73 FT
RAGIN CAJUN "14" CENTRAL BATTERY
(TIE) S85°24'03"W 1933.67 FT
(TIE) 103.05 FT
BC 1913 22 23
15 14
BC 1913 23 24

SEC 14
T.26S., R.34E.
BLM

MADRON SURVEYING, INC. 301 SOUTH CANAL CARLSBAD, NEW MEXICO
(575) 234-3341

SURVEY NO. 2680C

FLOWLINE PLAT

RE-ROUTE 2-4" BURIED IN SAME DITCH POLY FIBER FLEX FLOW LINES FROM THE RAGIN CAJUN "12" FED #2H, RAGIN CAJUN "12" FED #3H & RE-ROUTE 2-4" BURIED IN SAME DITCH POLY FIBER FLEX FLOW LINES FROM THE RATTLESNAKE "13" FED #2H, RAGIN CAJUN "12" FED #1H TO MAKE 4-4" BURIED IN SAME DITCH POLY FIBER FLEX FLOW LINES & 4" BURIED FIBER FLEX POLY FLOW LINE FROM THE RAGIN CAJUN "13" FED #1H & 4" BURIED FIBER FLEX POLY FLOW LINE FROM THE RAGIN CAJUN "13" FED #2H & 4" BURIED FIBER FLEX POLY FLOW LINE FROM THE RAGIN CAJUN "14" FED #1H TO THE RAGIN CAJUN "14" CENTRAL BATTERY

DEVON ENERGY PRODUCTION COMPANY, L.P.
CENTERLINE SURVEY OF A PIPELINE CROSSING
SECTION 14, TOWNSHIP 26 SOUTH, RANGE 34 EAST, N.M.P.M.
LEA COUNTY, STATE OF NEW MEXICO
JULY 30, 2014

DESCRIPTION

A STRIP OF LAND 30 FEET WIDE CROSSING BUREAU OF LAND MANAGEMENT LAND IN SECTION 14, TOWNSHIP 26 SOUTH, RANGE 34 EAST, N.M.P.M., LEA COUNTY, STATE OF NEW MEXICO AND BEING 15 FEET EACH SIDE OF THE FOLLOWING DESCRIBED CENTERLINE SURVEY:

BEGINNING AT A POINT WITHIN THE SE/4 SE/4 OF SAID SECTION 14, TOWNSHIP 26 SOUTH, RANGE 34 EAST, N.M.P.M., WHENCE THE SOUTHEAST CORNER OF SAID SECTION 14, TOWNSHIP 26 SOUTH, RANGE 34 EAST, N.M.P.M. BEARS S00°31'00"E, A DISTANCE OF 103.05 FEET;

THENCE N89°33'38"W A DISTANCE OF 720.40 FEET TO AN ANGLE POINT OF THE LINE HEREIN DESCRIBED;

THENCE N01°12'23"E A DISTANCE OF 28.73 FEET THE TERMINUS OF THIS CENTERLINE SURVEY, WHENCE THE SOUTH QUARTER CORNER OF SAID SECTION 14, TOWNSHIP 26 SOUTH, RANGE 34 EAST, N.M.P.M. BEARS S85°24'03"W, A DISTANCE OF 1933.67 FEET;

SAID STRIP OF LAND BEING 749.13 FEET OR 45.40 RODS IN LENGTH, CONTAINING 0.516 ACRES MORE OR LESS AND BEING ALLOCATED BY FORTIES AS FOLLOWS:

SE/4 SE/4 749.13 L.F. 45.40 RODS 0.516 ACRES

SURVEYOR CERTIFICATE

I, FILIMON F. JARAMILLO, A NEW MEXICO PROFESSIONAL SURVEYOR NO. 12797, HEREBY CERTIFY THAT I HAVE CONDUCTED AND AM RESPONSIBLE FOR THIS SURVEY, THAT THIS SURVEY IS TRUE AND CORRECT TO THE BEST OF MY KNOWLEDGE AND BELIEF, AND THAT THIS SURVEY AND PLAT MEET THE MINIMUM STANDARDS FOR LAND SURVEYING IN THE STATE OF NEW MEXICO.

IN WITNESS WHEREOF, THIS CERTIFICATE IS EXECUTED AT CARLSBAD, NEW MEXICO, THIS 2 DAY OF AUGUST 2014

GENERAL NOTES

1.) THE INTENT OF THIS ROUTE SURVEY IS TO ACQUIRE AN EASEMENT.

2.) BASIS OF BEARING IS NMSP EAST MODIFIED TO SURFACE COORDINATES.

SHEET: 12-16

MADRON SURVEYING, INC. 301 SOUTH CANAL CARLSBAD, NEW MEXICO (575) 234-3341

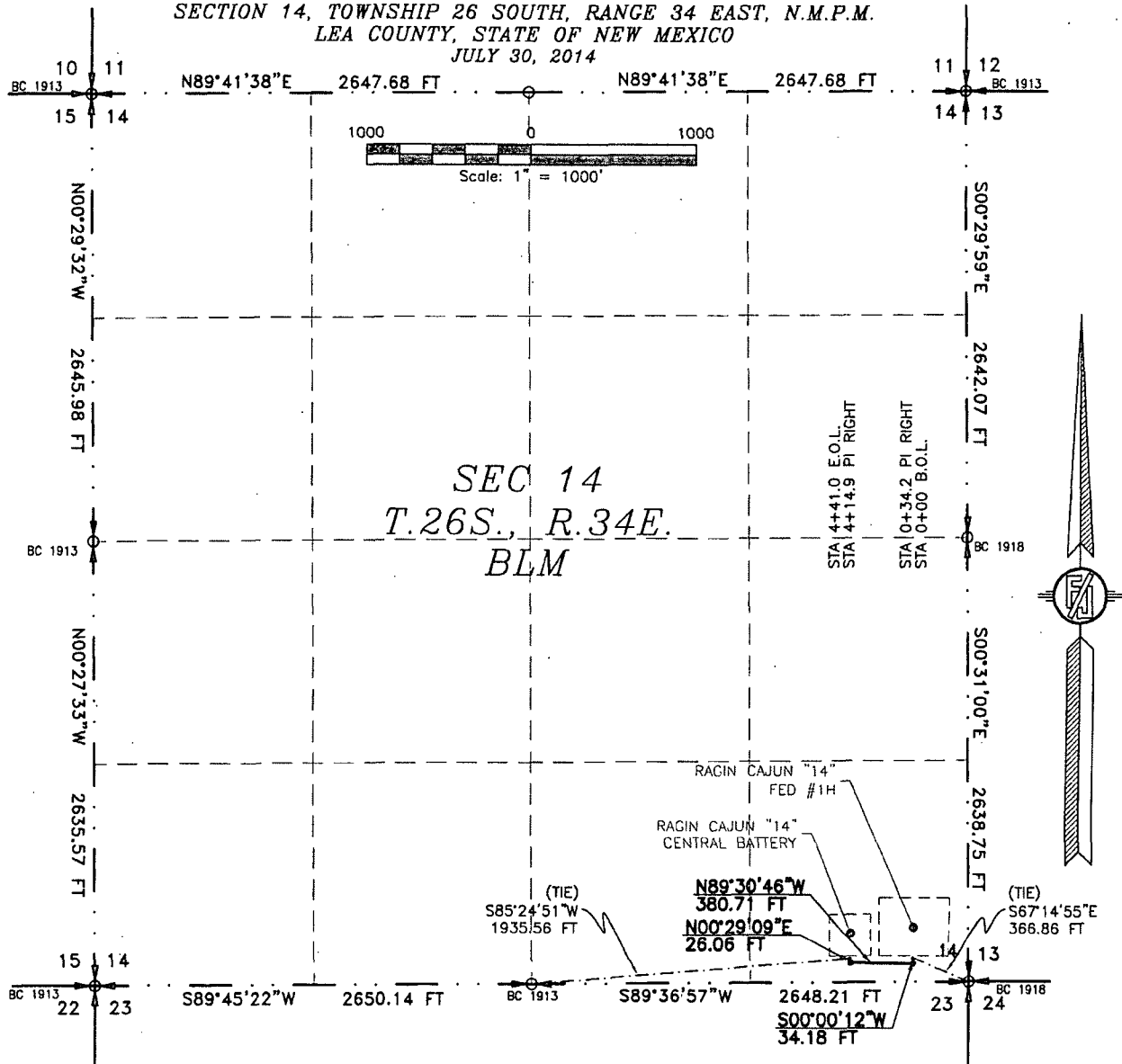
MADRON SURVEYING, INC.
301 SOUTH CANAL
CARLSBAD, NEW MEXICO 88220
Phone (575) 234-3341

SURVEY NO. 2680C

FLOWLINE PLAT

RE-ROUTE 2-4" BURIED IN SAME DITCH POLY FIBER FLEX FLOW LINES FROM THE RAGIN CAJUN "12" FED #2H, RAGIN CAJUN "12" FED #3H & RE-ROUTE 2-4" BURIED IN SAME DITCH POLY FIBER FLEX FLOW LINES FROM THE RATTLESNAKE "13" FED #2H, RAGIN CAJUN "12" FED #1H TO MAKE 4-4" BURIED IN SAME DITCH POLY FIBER FLEX FLOW LINES & 4" BURIED FIBER FLEX POLY FLOW LINE FROM THE RAGIN CAJUN "13" FED #1H & 4" BURIED FIBER FLEX POLY FLOW LINE FROM THE RAGIN CAJUN "13" FED #2H & 4" BURIED FIBER FLEX POLY FLOW LINE FROM THE RAGIN CAJUN "14" FED #1H TO THE RAGIN CAJUN "14" CENTRAL BATTERY

DEVON ENERGY PRODUCTION COMPANY, L.P.
CENTERLINE SURVEY OF A PIPELINE CROSSING
SECTION 14, TOWNSHIP 26 SOUTH, RANGE 34 EAST, N.M.P.M.
LEA COUNTY, STATE OF NEW MEXICO
JULY 30, 2014



SEE NEXT SHEET (14-16) FOR DESCRIPTION

SURVEYOR CERTIFICATE

I, FILMON F. JARAMILLO, A NEW MEXICO PROFESSIONAL SURVEYOR NO. 12797, HEREBY CERTIFY THAT I HAVE CONDUCTED AND AM RESPONSIBLE FOR THIS SURVEY, THAT THIS SURVEY IS TRUE AND CORRECT TO THE BEST OF MY KNOWLEDGE AND BELIEF, AND THAT THIS SURVEY AND PLAT MEET THE MINIMUM STANDARDS FOR LAND SURVEYING IN THE STATE OF NEW MEXICO.

IN WITNESS WHEREOF, THIS CERTIFICATE IS EXECUTED AT CARLSBAD,

NEW MEXICO, THIS 22 DAY OF AUGUST 2014

[Signature of Filmon F. Jaramillo]
FILMON F. JARAMILLO, PLS 12797

MADRON SURVEYING, INC.
301 SOUTH CANAL
CARLSBAD, NEW MEXICO 88220
Phone (575) 234-3341

GENERAL NOTES

- 1.) THE INTENT OF THIS ROUTE SURVEY IS TO ACQUIRE AN EASEMENT.
- 2.) BASIS OF BEARING IS NMSP EAST MODIFIED TO SURFACE COORDINATES.

SHEET: 13-16

MADRON SURVEYING, INC. 301 SOUTH CANAL (575) 234-3341

SURVEY NO. 2680C
CARLSBAD, NEW MEXICO

FLOWLINE PLAT

RE-ROUTE 2-4" BURIED IN SAME DITCH POLY FIBER FLEX FLOW LINES FROM THE RAGIN CAJUN "12" FED #2H, RAGIN CAJUN "12" FED #3H & RE-ROUTE 2-4" BURIED IN SAME DITCH POLY FIBER FLEX FLOW LINES FROM THE RATTLESNAKE "13" FED #2H, RAGIN CAJUN "12" FED #1H TO MAKE 4-4" BURIED IN SAME DITCH POLY FIBER FLEX FLOW LINES & 4" BURIED FIBER FLEX POLY FLOW LINE FROM THE RAGIN CAJUN "13" FED #1H & 4" BURIED FIBER FLEX POLY FLOW LINE FROM THE RAGIN CAJUN "13" FED #2H & 4" BURIED FIBER FLEX POLY FLOW LINE FROM THE RAGIN CAJUN "14" FED #1H TO THE RAGIN CAJUN "14" CENTRAL BATTERY

DEVON ENERGY PRODUCTION COMPANY, L.P.
CENTERLINE SURVEY OF A PIPELINE CROSSING
SECTION 14, TOWNSHIP 26 SOUTH, RANGE 34 EAST, N.M.P.M.
LEA COUNTY, STATE OF NEW MEXICO
JULY 30, 2014

DESCRIPTION

A STRIP OF LAND 30 FEET WIDE CROSSING BUREAU OF LAND MANAGEMENT LAND IN SECTION 14, TOWNSHIP 26 SOUTH, RANGE 34 EAST, N.M.P.M., LEA COUNTY, STATE OF NEW MEXICO AND BEING 15 FEET EACH SIDE OF THE FOLLOWING DESCRIBED CENTERLINE SURVEY:

BEGINNING AT A POINT WITHIN THE SE/4 SE/4 OF SAID SECTION 14, TOWNSHIP 26 SOUTH, RANGE 34 EAST, N.M.P.M., WHENCE THE SOUTHEAST CORNER OF SAID SECTION 14, TOWNSHIP 26 SOUTH, RANGE 34 EAST, N.M.P.M. BEARS S67°14'55"E, A DISTANCE OF 366.86 FEET;
THENCE S00°00'12"W A DISTANCE OF 34.18 FEET TO AN ANGLE POINT OF THE LINE HEREIN DESCRIBED;
THENCE N89°30'46"W A DISTANCE OF 380.71 FEET TO AN ANGLE POINT OF THE LINE HEREIN DESCRIBED;
THENCE N00°29'09"E A DISTANCE OF 26.06 FEET THE TERMINUS OF THIS CENTERLINE SURVEY, WHENCE THE SOUTH QUARTER CORNER OF SAID SECTION 14, TOWNSHIP 26 SOUTH, RANGE 34 EAST, N.M.P.M. BEARS S85°24'51"W, A DISTANCE OF 1935.56 FEET;

SAID STRIP OF LAND BEING 440.95 FEET OR 26.72 RODS IN LENGTH, CONTAINING 0.304 ACRES MORE OR LESS AND BEING ALLOCATED BY FORTIES AS FOLLOWS:

SE/4 SE/4 440.95 L.F. 26.72 RODS 0.304 ACRES

SURVEYOR CERTIFICATE

I, FILMON F. JARAMILLO, A NEW MEXICO PROFESSIONAL SURVEYOR NO. 12797, HEREBY CERTIFY THAT I HAVE CONDUCTED AND AM RESPONSIBLE FOR THIS SURVEY, THAT THIS SURVEY IS TRUE AND CORRECT TO THE BEST OF MY KNOWLEDGE AND BELIEF, AND THAT THIS SURVEY AND PLAT MEET THE MINIMUM STANDARDS FOR LAND SURVEYING IN THE STATE OF NEW MEXICO.

IN WITNESS WHEREOF, THIS CERTIFICATE IS EXECUTED AT CARLSBAD,

NEW MEXICO, THIS 12th DAY OF AUGUST 2014

GENERAL NOTES

1.) THE INTENT OF THIS ROUTE SURVEY IS TO ACQUIRE AN EASEMENT.

2.) BASIS OF BEARING IS NMSP EAST MODIFIED TO SURFACE COORDINATES.

MADRON SURVEYING, INC.
301 SOUTH CANAL
CARLSBAD, NEW MEXICO 88220
Phone (575) 234-3341

SHEET: 14-16

MADRON SURVEYING, INC. 301 SOUTH CANAL CARLSBAD, NEW MEXICO
(575) 234-3341

SURVEY NO. 2680C

RE-ROUTE 2-4" BURIED IN SAME DITCH POLY FIBER FLEX FLOW LINES FROM THE RAGIN CAJUN "12" FED #2H, RAGIN CAJUN "12" FED #3H & RE-ROUTE 2-4" BURIED IN SAME DITCH POLY FIBER FLEX FLOW LINES FROM THE RATTLESNAKE "13" FED #2H, RAGIN CAJUN "12" FED #1H TO MAKE 4-4" BURIED IN SAME DITCH POLY FIBER FLEX FLOW LINES & 4" BURIED FIBER FLEX POLY FLOW LINE FROM THE RAGIN CAJUN "13" FED #1H & 4" BURIED FIBER FLEX POLY FLOW LINE FROM THE RAGIN CAJUN "13" FED #2H & 4" BURIED FIBER FLEX POLY FLOW LINE FROM THE RAGIN CAJUN "14" FED #1H TO THE RAGIN CAJUN "14" CENTRAL BATTERY

DEVON ENERGY PRODUCTION COMPANY, L.P.
CENTERLINE SURVEY OF A PIPELINE CROSSING
SECTION 13, 14, TOWNSHIP 26 SOUTH, RANGE 34 EAST, N.M.P.M.
LEA COUNTY, STATE OF NEW MEXICO
JULY 30, 2014

