

District I  
1625 N. French Dr., Hobbs, NM 88240  
Phone: (575) 393-6161 Fax: (575) 393-0720  
District II  
811 S. First St., Artesia, NM 88210  
Phone: (575) 748-1283 Fax: (575) 748-9720  
District III  
1000 Rio Brazos Road, Aztec, NM 87410  
Phone: (505) 334-6178 Fax: (505) 334-6170  
District IV  
1220 S. St. Francis Dr., Santa Fe, NM 87505  
Phone: (505) 476-3460 Fax: (505) 476-3462

State of New Mexico  
Energy, Minerals & Natural Resources Department  
**OIL CONSERVATION DIVISION**  
1220 South St. Francis Dr.  
Santa Fe, NM 87505

Form C-102  
Revised August 1, 2011  
Submit one copy to appropriate  
District Office

☐ AMENDED REPORT

WELL LOCATION AND ACREAGE DEDICATION PLAT

1 AP# Number <b>30-023-42260</b>		2 Pool Code <b>97983</b>		3 Well Name <b>WC-023 G-07 5203506 D; BAY &amp; SPRING</b>	
4 Property Code <b>312878</b>		5 Property Name <b>LEA 7 FEDERAL COM</b>		6 Well Number <b>#1H</b>	
7 GRID No. <b>215099</b>		8 Operator Name <b>CIMAREX ENERGY CO.</b>		9 Elevation <b>3672'</b>	

" Surface Location

UL or lot no.	Section	Township	Range	Lot Idn	Feet from the	North/South line	Feet from the	East/West line	County
4	7	20S	35E		330	SOUTH	660	WEST	LEA

" Bottom Hole Location If Different From Surface

UL or lot no.	Section	Township	Range	Lot Idn	Feet from the	North/South line	Feet from the	East/West line	County
1	7	20S	35E		330	NORTH	900	WEST	LEA
12 Dedicated Acres 159.40		13 Joint or Infill		14 Consolidation Code		15 Order No.			



No allowable will be assigned to this completion until all interests have been consolidated or a non-standard unit has been approved by the division.

<p>16</p> <p>889'38'43"W - 2633.34' (Meas.)</p> <p>889'40'15"W - 2638.52' (Meas.)</p> <p>900'</p> <p>B.H.</p> <p>LOT 1</p> <p>R 34</p> <p>R 35</p> <p>E</p> <p>LOT 2</p> <p>LOT 3</p> <p>LOT 4</p> <p>660'</p> <p>S.L.</p> <p>889'44'02"W - 5276.51' (Meas.)</p>		<p>1000'</p> <p>500'</p> <p>0</p> <p>1000'</p> <p>SCALE DRAWN BY: C.A.G.</p> <p>▲ = SECTION CORNERS LOCATED. △ = SECTION CORNERS RE-ESTABLISHED. (Not Set on Ground.)</p> <p>NAD 83 (BOTTOM HOLE) LATITUDE = 32°35'38.38" (32.593994) LONGITUDE = 103°30'08.10" (103.502250) NAD 27 (BOTTOM HOLE) LATITUDE = 32°35'37.93" (32.593869) LONGITUDE = 103°30'06.34" (103.501761) STATE PLANE NAD 83 N: 580825.84 E: 797292.35 STATE PLANE NAD 27 N: 580762.92 E: 756111.41</p> <p>NAD 83 (SURFACE LOCATION) LATITUDE = 32°34'52.66" (32.581294) LONGITUDE = 103°30'10.92" (103.503033) NAD 27 (SURFACE LOCATION) LATITUDE = 32°34'52.21" (32.581169) LONGITUDE = 103°30'09.16" (103.502544) STATE PLANE NAD 83 N: 576203.14 E: 797087.47 STATE PLANE NAD 27 N: 576140.36 E: 755906.40</p>	<p>" OPERATOR CERTIFICATION</p> <p>I hereby certify that the information contained herein is true and complete to the best of my knowledge and belief, and that this organization either owns a working interest or unleased mineral interest in the land including the proposed bottom hole location or has a right to drill this well at this location pursuant to a contract with an owner of such a mineral or working interest, or to a voluntary pooling agreement or a compulsory pooling order heretofore entered by the Division.</p> <p>Signature: <i>Terri Stathem</i> Date: 2/10/14</p> <p>Printed Name: Terri Stathem</p> <p>E-mail Address: tstathem@cimarex.com</p> <p>" SURVEYOR CERTIFICATION</p> <p>I hereby certify that the well location shown on this plat was plotted from field notes of actual surveys made by me or under my supervision, and that the same is true and correct to the best of my belief.</p> <p>April 22, 2013</p> <p>Date of Survey</p> <p>Signature and Seal of Professional Surveyor:</p> <p>PROFESSIONAL SURVEYOR NEW MEXICO J. MARSHALL 01-21-14</p> <p>Certificate Number:</p>
--	--	---	---

NOV 14 2014

BEGINNING AT THE INTERSECTION OF HOBBS HIGHWAY/  
HIGHWAY 180 AND COUNTY ROAD 27-A/ MARATHON ROAD  
LOCATED IN THE NW 1/4 OF SECTION 25, T19S, R34E, N.M.P.M.  
PROCEED IN SOUTHERLY DIRECTION APPROXIMATELY 5.6  
MILES TO THE JUNCTION OF THIS ROAD AND AN EXISTING  
ROAD TO THE EAST; TURN LEFT AND PROCEED IN AN  
EASTERLY DIRECTION APPROXIMATELY 1.7 MILES TO THE  
JUNCTION OF THIS ROAD AND AN EXISTING ROAD TO THE  
NORTH; TURN LEFT AND PROCEED IN AN NORTHERLY, THEN  
NORTHEASTERLY DIRECTION APPROXIMATELY 1.5 MILES TO  
THE JUNCTION OF THIS ROAD AND AN EXISTING ROAD TO THE  
NORTH; TURN LEFT PROCEED IN A NORTHERLY DIRECTION  
APPROXIMATELY 0.2 MILES TO THE BEGINNING OF THE  
PROPOSED ACCESS TO THE WEST; FOLLOW ROAD FLAGS IN A  
WESTERLY, THEN NORTHERLY, THEN WESTERLY DIRECTION  
APPROXIMATELY 14,908' TO THE PROPOSED LOCATION.

TOTAL DISTANCE FROM INTERSECTION OF HOBBS  
HIGHWAY/HIGHWAY 180 AND COUNTY ROAD 27-A/ MARATHON  
ROAD LOCATED IN THE NW 1/4 OF SECTION 25 T19S, R34E,  
N.M.P.M. TO THE PROPOSED LOCATION IS APPROXIMATELY 11.8  
MILES.

DRAWN BY: L.S.	REVISED: 00-00-00	 <b>CIMAREX ENERGY CO.</b>
DATE DRAWN: 01-16-14		
 Corporate Office * 85 South 200 East Vernal, UT 84078 * (435) 789-1017		LEA 7 FEDERAL COM #1H SECTION 7, T20S, R35E, N.M.P.M. 330' FSL 660' FWL
		<b>ROAD DESCRIPTION</b>
		<b>EXHIBIT</b>

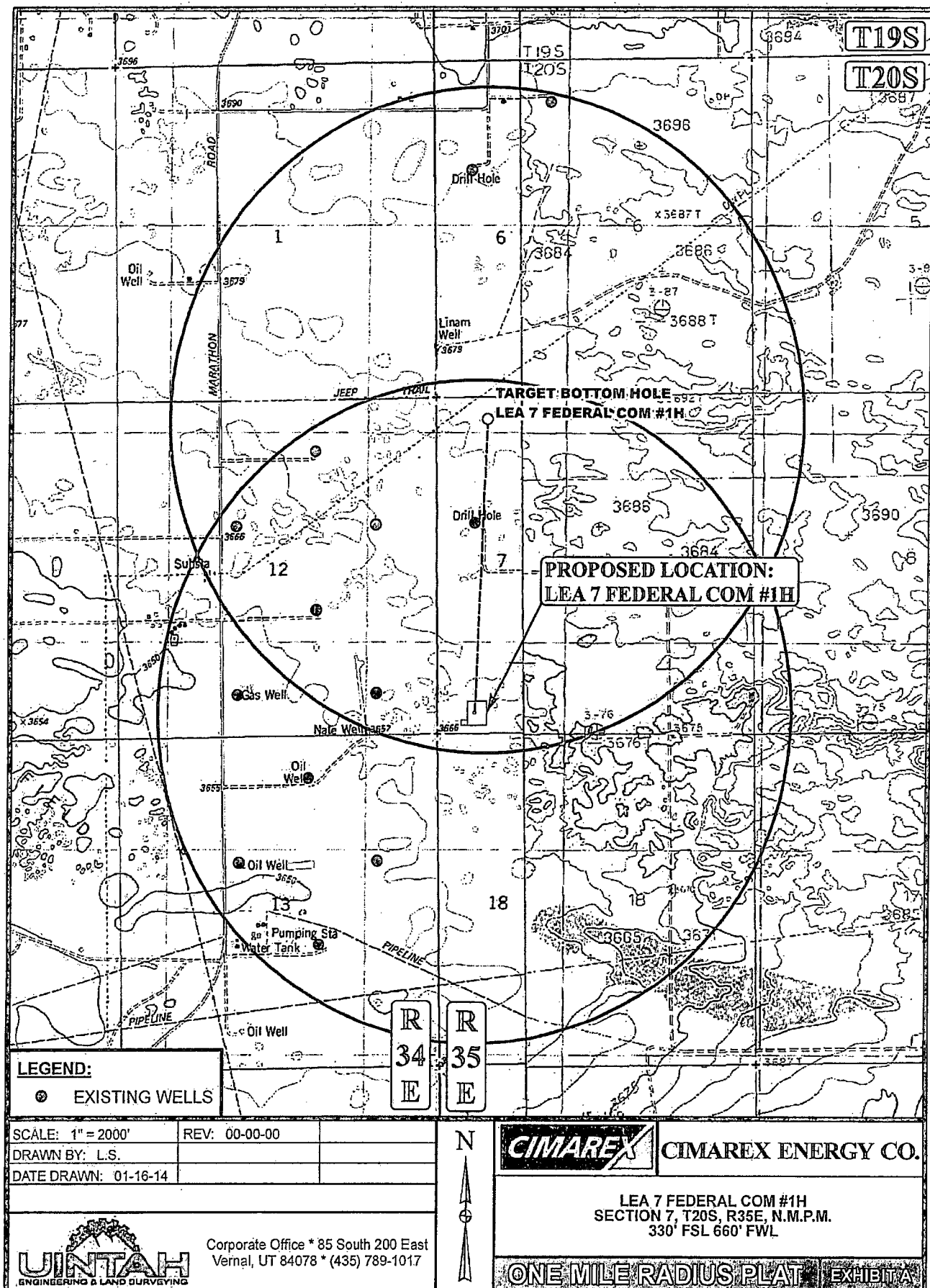


Exhibit C

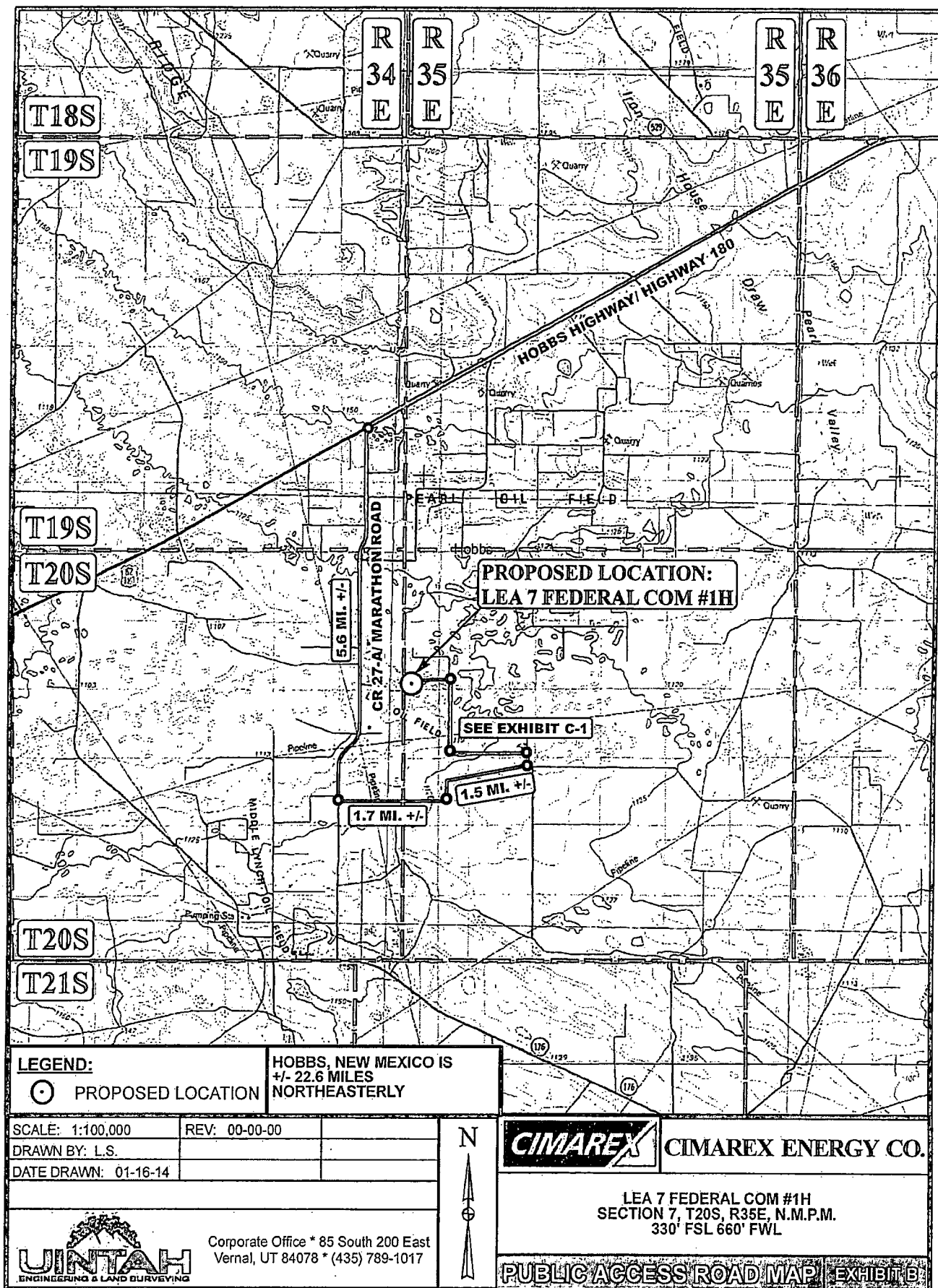
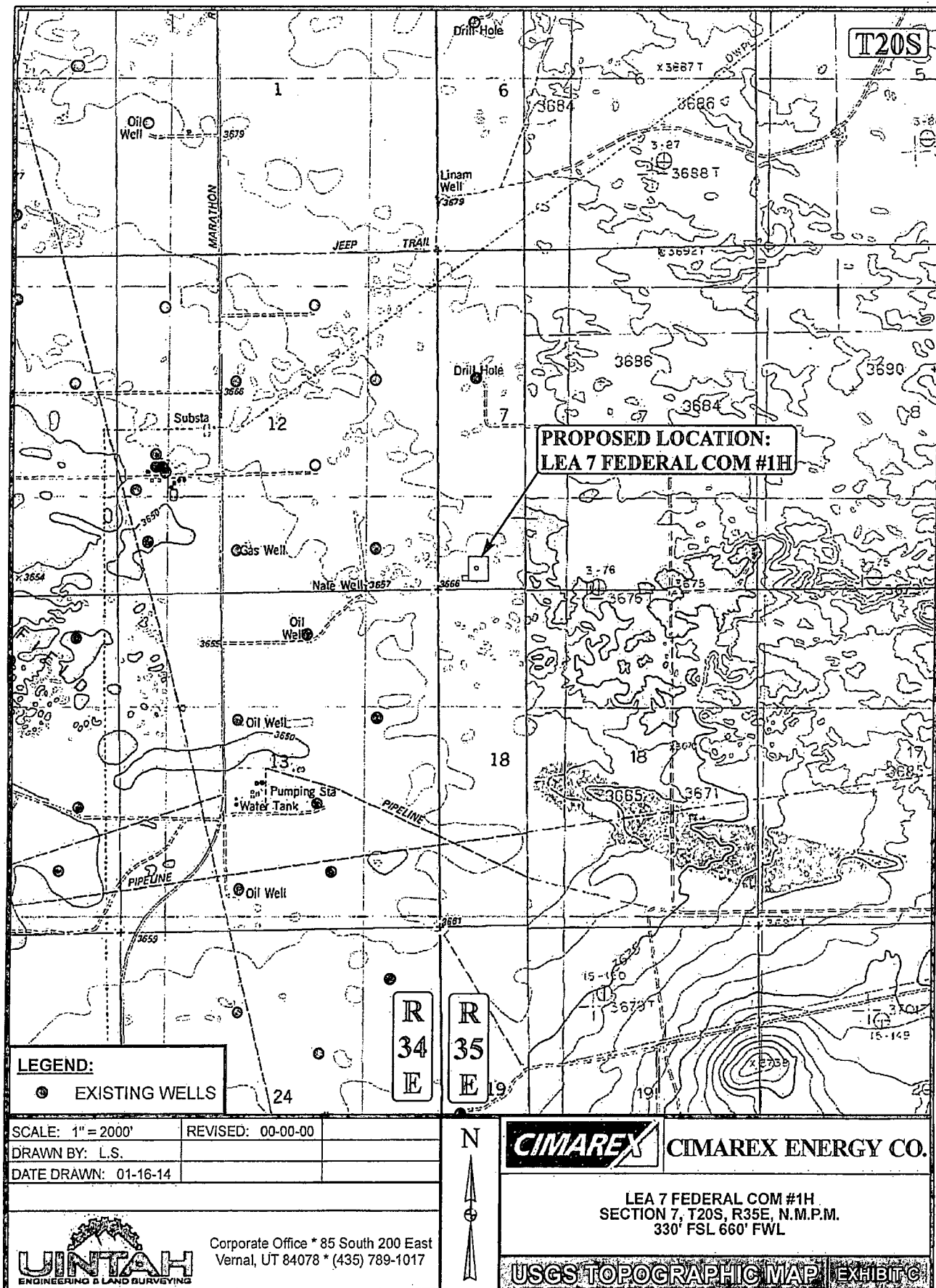


Exhibit.B



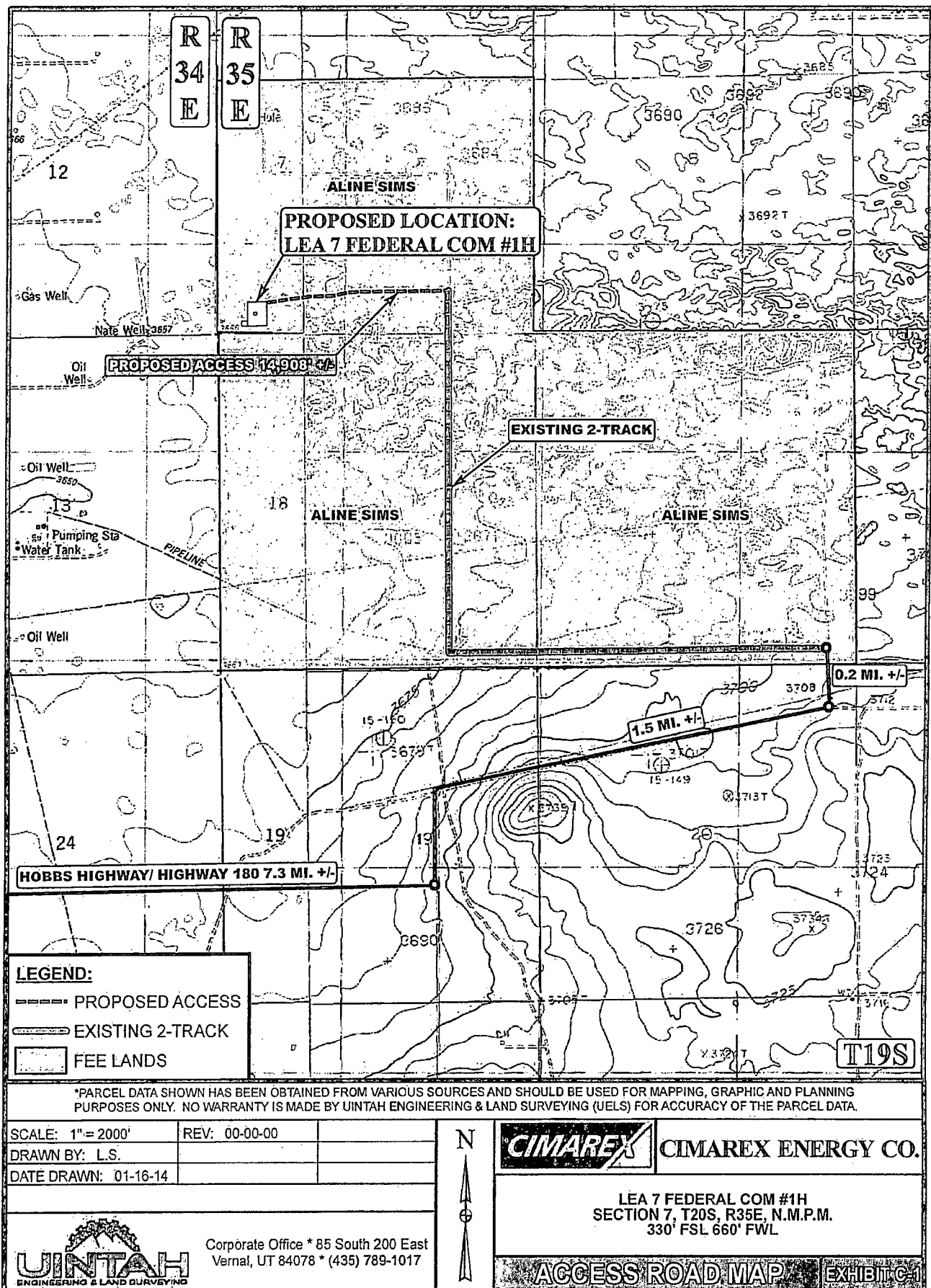
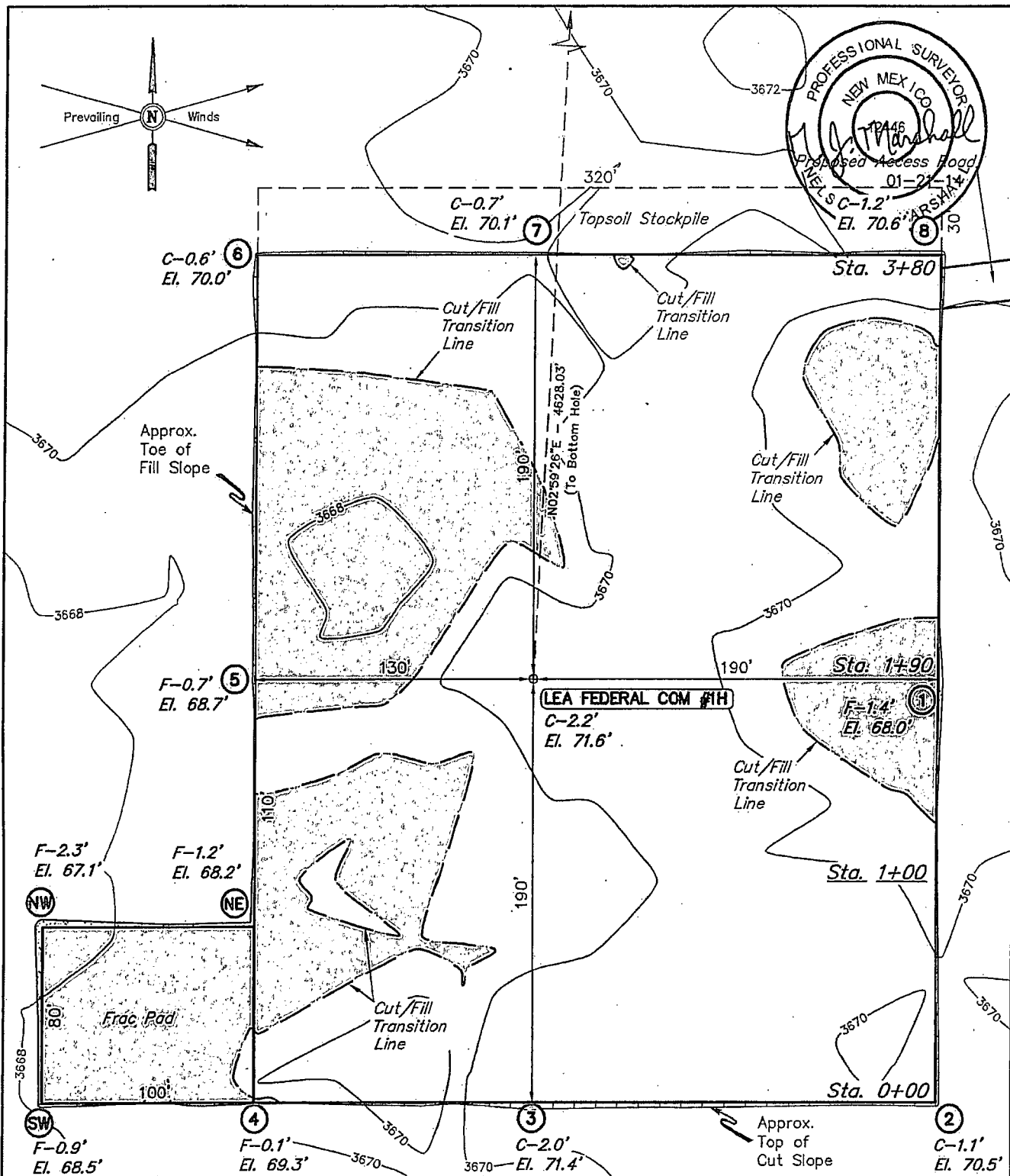


Exhibit C-1



ELEV. UNGRADED GROUND AT LOC. STAKE = 3671.6' FINISHED GRADE ELEV. AT LOC. STAKE = 3669.4'

**NOTES:**

- Flare pit is to be located a min. of 100' from the well head.
- Underground utilities shown on this sheet are for visualization purposes only, actual locations to be determined prior to construction.



**CIMAREX ENERGY CO.**

LEA 7 FEDERAL COM #1H  
SECTION 7, T20S, R35E, N.M.P.M.  
330' FSL 660' FWL

DRAWN BY: C.A.G.

SCALE: 1" = 60'

DATE: 01-20-14

REV:

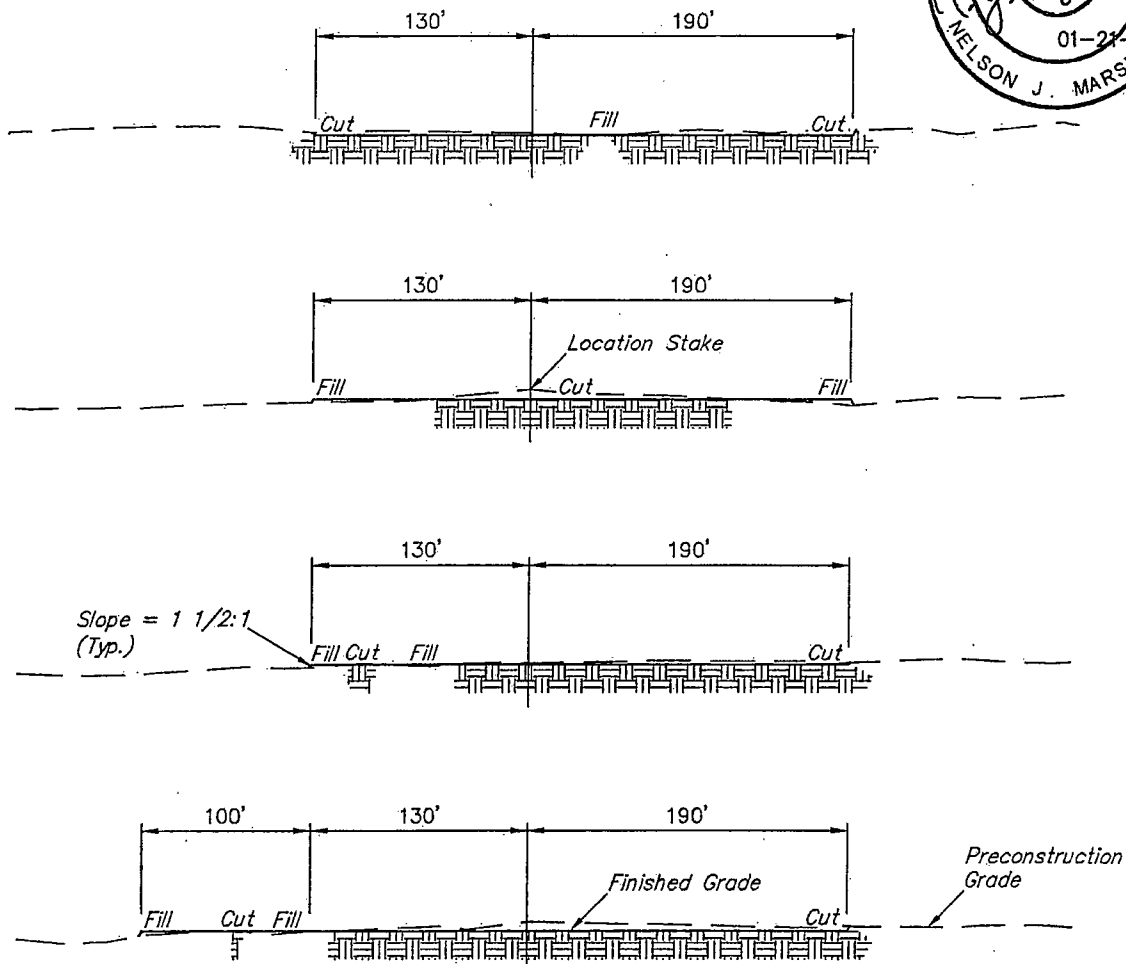
**LOCATION LAYOUT**

**EXHIBIT D**



Corporate Office \* 85 South 200 East  
Vernal, UT 84078 \* (435) 789-1017

1" = 40'  
X-Section  
Scale  
1" = 100'



APPROXIMATE EARTHWORK QUANTITIES		APPROXIMATE SURFACE DISTURBANCE AREAS		
(3") TOPSOIL STRIPPING	1,220 Cu. Yds.		DISTANCE	ACRES
REMAINING LOCATION	1,470 Cu. Yds.	WELL SITE DISTURBANCE	NA	±3.017
TOTAL CUT	2,690 Cu. Yds.	ACCESS ROAD DISTURBANCE	±14908.29'	±10.199
FILL	1,470 Cu. Yds.			
EXCESS MATERIAL	1,220 Cu. Yds.			
TOPSOIL	1,220 Cu. Yds.			
EXCESS UNBALANCE (After Interim Rehabilitation)	0 Cu. Yds.	TOTAL DISTURBANCE	±14908.29'	±13.216

**NOTES:**

- Fill quantity includes 5% for compaction.
- Topsoil should not be stripped below finished grade on substructure area.



**CIMAREX ENERGY CO.**

LEA 7 FEDERAL COM #1H  
SECTION 7, T20S, R35E, N.M.P.M.  
330' FSL 660' FWL



Corporate Office \* 85 South 200 East  
Vernal, UT 84078 \* (435) 789-1017

DRAWN BY: C.A.G. SCALE: 1" = 60'

DATE: 01-20-14

**TYPICAL CROSS SECTIONS** **EXHIBIT D**