

HOBBS OCD

NOV 17 2014

RECEIVED

District I
1625 N. French Dr., Hobbs, NM 88240
Phone: (575) 393-6161 Fax: (575) 393-0720

District II
311 S. First St., Artesia, NM 88210
Phone: (575) 745-1283 Fax: (575) 748-9720

District III
1000 Rio Brazos Road, Aztec, NM 87410
Phone: (505) 334-6178 Fax: (505) 334-6170

District IV
1220 S. St. Francis Dr., Santa Fe, NM 87505
Phone: (505) 476-3450 Fax: (505) 476-3462

State of New Mexico
Energy, Minerals & Natural Resources Department
OIL CONSERVATION DIVISION
1220 South St. Francis Dr.
Santa Fe, NM 87505

Form C-102

Revised August 1, 2011

Submit one copy to appropriate

District Office

☐ AMENDED REPORT

WELL LOCATION AND ACREAGE DEDICATION PLAT

¹ API Number 30-025-	² Pool Code 50461	³ Pool Name QUAIL RIDGE; BONE SPRING, SOUTH
⁴ Property Code 313886	⁵ Property Name NORTH LEA 4 FED COM	⁶ Well Number 4H
⁷ OGRID No. 18917	⁸ Operator Name READ & STEVENS, INC.	⁹ Elevation 3644.9

¹⁰ Surface Location

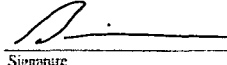
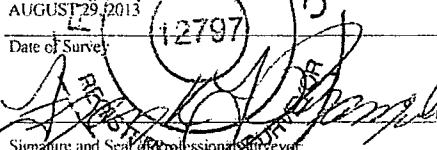
UL or lot no.	Section	Township	Range	Lot Ida	Feet from the	North/South line	Feet from the	East/West line	County
4	4	20 S	34 E		660	NORTH	1040	WEST	LEA

¹¹ Bottom Hole Location If Different From Surface

UL or lot no.	Section	Township	Range	Lot Ida	Feet from the	North/South line	Feet from the	East/West line	County
M	4	20 S	34E		330	SOUTH	970	WEST	LEA

¹² Dedicated Acres 160.21	¹³ Joint or Infill email from S. Morris	¹⁴ Consolidation Code 6/24/14 and 6/25/14	¹⁵ Order No.
--	--	--	-------------------------

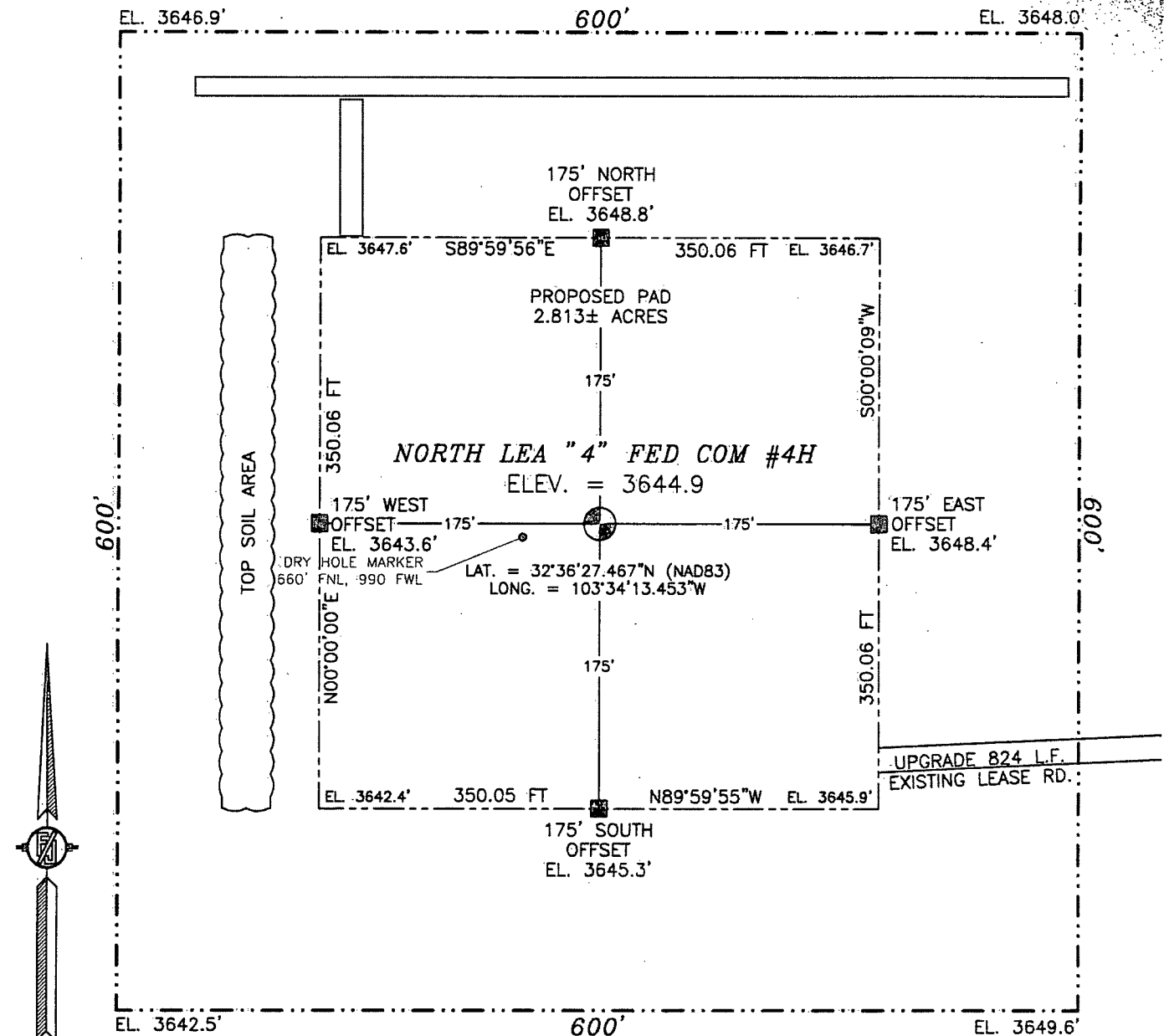
No allowable will be assigned to this completion until all interests have been consolidated or a non-standard unit has been approved by the division.

<p>N89°30'45"E 2642.63 FT</p> <p>40.13 AC. SVY L4 (40.44 AC. BLM)</p> <p>1040'</p> <p>(D4)</p> <p>NW CORNER SEC. 4 LAT. = 32°36'33.983"N LONG. = 103°34'25.555"W</p> <p>W/4 CORNER SEC. 4 LAT. = 32°36'07.880"N LONG. = 103°34'25.770"W</p> <p>SW CORNER SEC. 4 LAT. = 32°35'41.808"N LONG. = 103°34'25.919"W</p> <p>BOTTOM OF HOLE 970'</p> <p>89°53'33"W 2652.42 FT</p>		<p>N89°24'37"E 2642.22 FT</p> <p>N/4 CORNER SEC. 4 LAT. = 32°36'34.018"N LONG. = 103°33'54.668"W</p> <p>NE CORNER SEC. 4 LAT. = 32°36'34.097"N LONG. = 103°33'23.785"W</p> <p>E/4 CORNER SEC. 4 LAT. = 32°36'07.810"N LONG. = 103°33'23.504"W</p> <p>SE CORNER SEC. 4 LAT. = 32°35'41.520"N LONG. = 103°33'23.804"W</p> <p>89°54'26"W 2662.81 FT</p>		<p>17 OPERATOR CERTIFICATION</p> <p>I hereby certify that the information contained herein is true and complete to the best of my knowledge and belief, and that this organization either owns a working interest or undivided mineral interest in the land including the proposed bottom hole location or has a right to drill this well at this location pursuant to a contract with an owner of such a mineral or working interest, or to a voluntary pooling agreement or a compulsory pooling order heretofore entered by the division.</p> <p> 05/10/2014 Signature Date</p> <p>Steve Morris Printed Name</p> <p>steve.morris@mojocorp.ca E-mail Address</p> <p>18 SURVEYOR CERTIFICATION</p> <p>I hereby certify that the well location shown on this plat was plotted from field notes of actual surveys made by me or under my supervision, and that the same is true and correct to the best of my belief.</p> <p>AUGUST 29, 2013 Date of Survey</p> <p> Signature and Seal of Professional Surveyor</p> <p>Certificate Number: PL 12797 SURVEY NO. 1897</p>
---	--	--	--	---

NOV 18 2014

SECTION 4, TOWNSHIP 20 SOUTH, RANGE 34 EAST, N.M.P.M.
LEA COUNTY, STATE OF NEW MEXICO

NOTE: LATITUDE AND LONGITUDE COORDINATES ARE SHOWN USING THE NORTH AMERICAN DATUM OF 1983 (NAD83) IN DEGREES, MINUTES AND DECIMAL SECONDS FORMAT. BASIS OF BEARING IS NEW MEXICO STATE PLANE EAST (NAD83) COORDINATES MODIFIED TO SURFACE.



010 50 100 200

SCALE 1" = 100'

DIRECTIONS TO LOCATION

FROM MILE MARKER #78 ON HWY 62-180 GO EAST APPROX 0.2 MILES TO A LEASE ROAD ON RIGHT (SOUTH) TURN SOUTH GO APPROX. 0.42 MILES ROAD TURNS RIGHT (WEST) TURN WEST GO APPROX. 0.23 MILES TO ROAD LATH WITH RED AND WHITE FLAGGING TO BEGIN UPGRADE ON EXISTING LEASE ROAD GO WEST APPROX. 0.18 MILES END UPGRADE OF EXISTING ROAD AT LOCATION

READ & STEVENS, INC.
NORTH LEA "4" FED COM #4H
LOCATED 660 FT. FROM THE NORTH LINE
AND 1040 FT. FROM THE WEST LINE OF
SECTION 4, TOWNSHIP 20 SOUTH,
RANGE 34 EAST, N.M.P.M.
LEA COUNTY, STATE OF NEW MEXICO

AUGUST 29, 2013

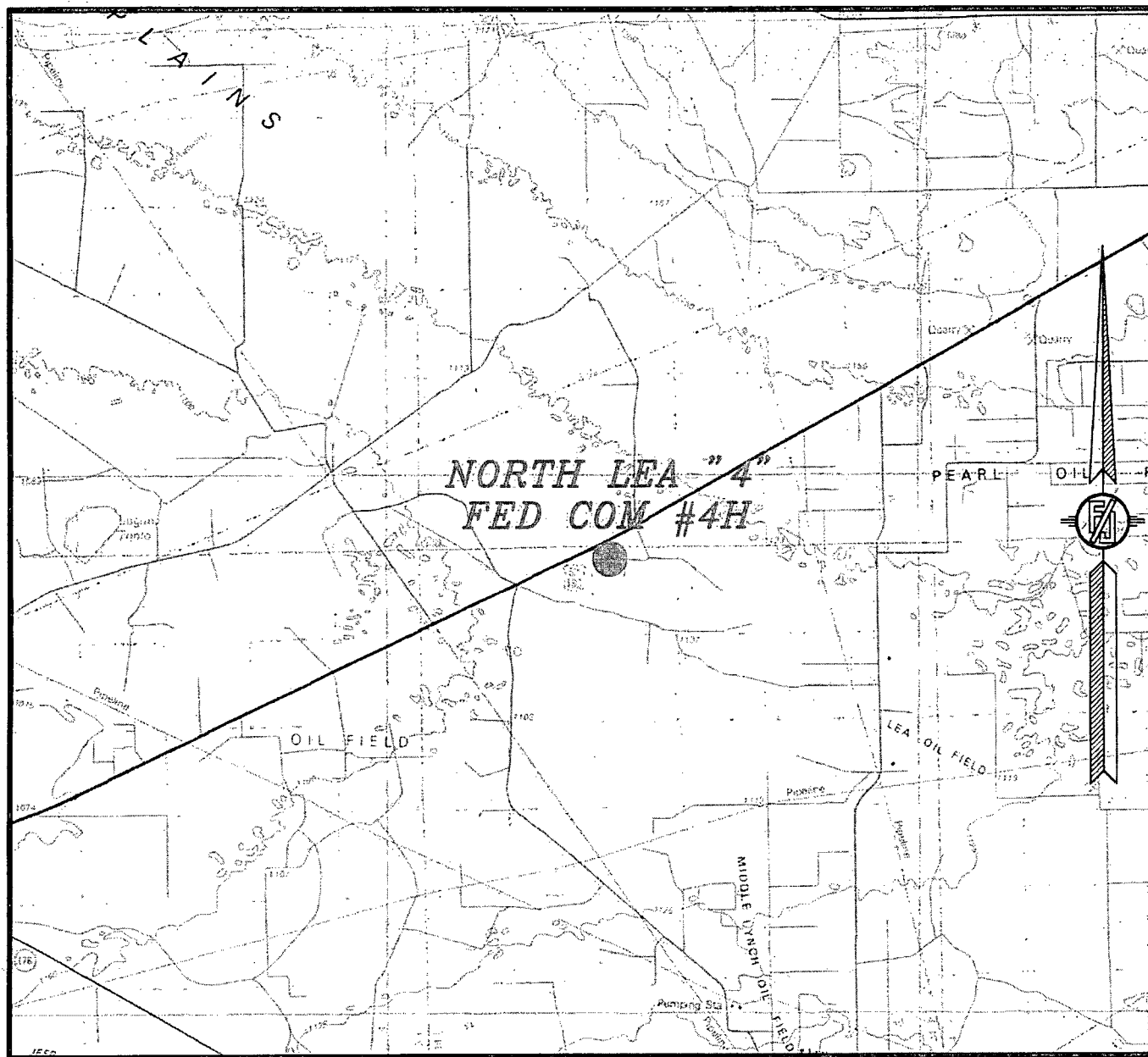
SURVEY NO. 1897

MADRON SURVEYING, INC. 301 SOUTH CANAL (575) 234-3341 CARLSBAD, NEW MEXICO

OV 18 2014

CARLSBAD, NEW MEXICO

SECTION 4, TOWNSHIP 20 SOUTH, RANGE 34 EAST, N.M.P.M.
LEA COUNTY, STATE OF NEW MEXICO
VICINITY MAP



NOT TO SCALE

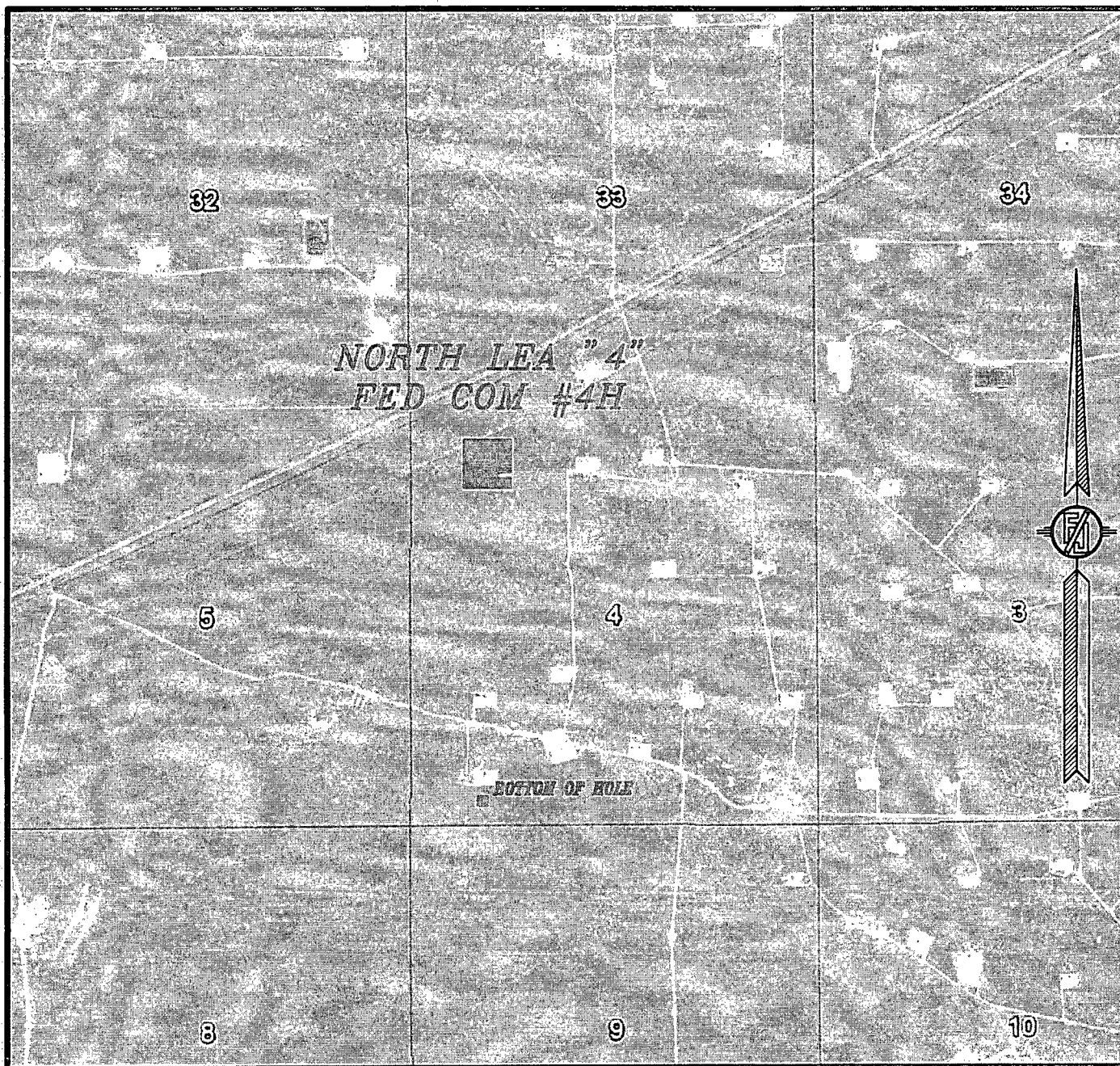
READ & STEVENS, INC.
NORTH LEA "4" FED COM #4H
LOCATED 660 FT. FROM THE NORTH LINE
AND 1040 FT. FROM THE WEST LINE OF
SECTION 4, TOWNSHIP 20 SOUTH,
RANGE 34 EAST, N.M.P.M.
LEA COUNTY, STATE OF NEW MEXICO

AUGUST 29, 2013

SURVEY NO. 1897

MADRON SURVEYING, INC. 301 SOUTH CANAL (575) 234-3341 CARLSBAD, NEW MEXICO

SECTION 4, TOWNSHIP 20 SOUTH, RANGE 34 EAST, N.M.P.M.
LEA COUNTY, STATE OF NEW MEXICO
AERIAL PHOTO



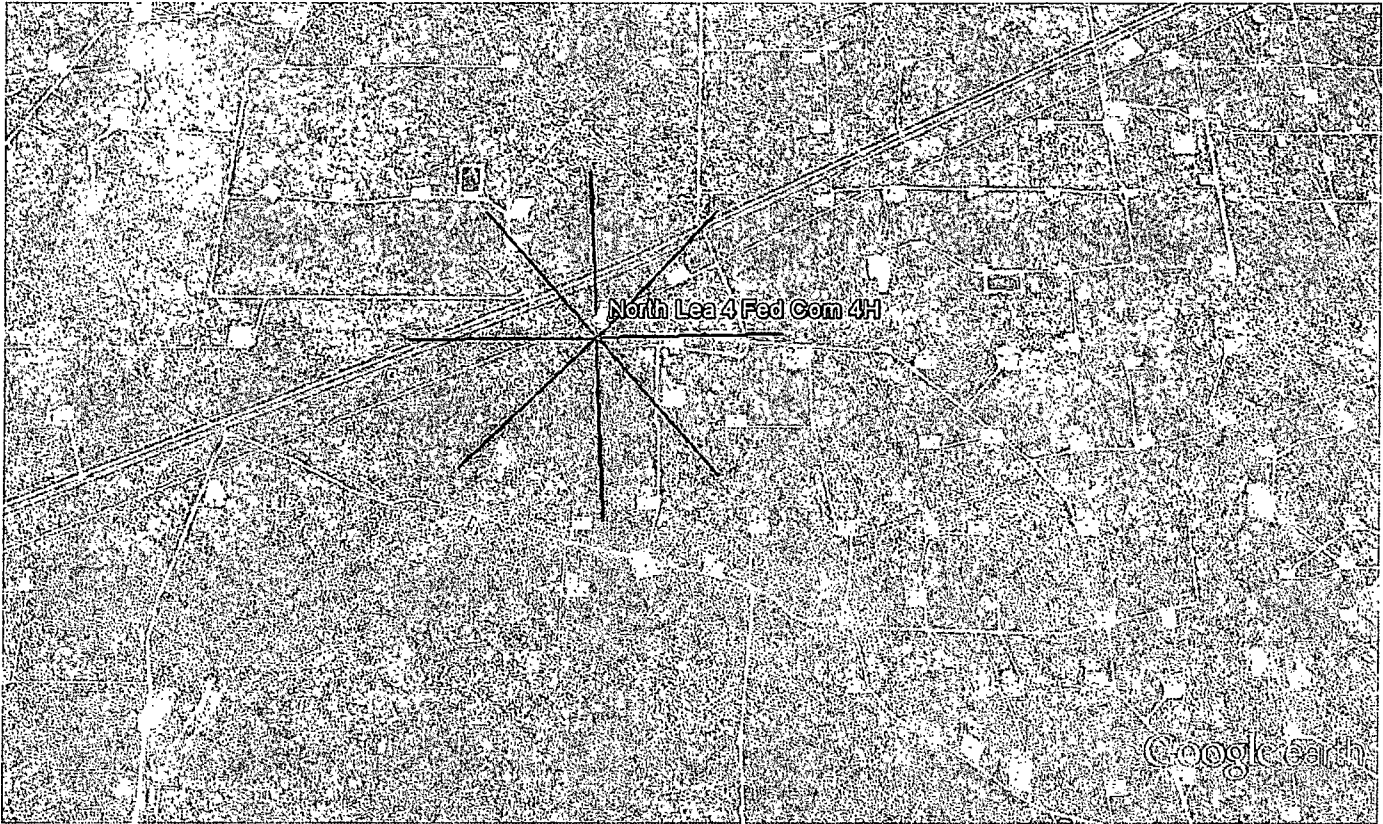
NOT TO SCALE
AERIAL PHOTO:
GOOGLE EARTH
MARCH 2012

READ & STEVENS, INC.
NORTH LEA "4" FED COM #4H
LOCATED 660 FT. FROM THE NORTH LINE
AND 1040 FT. FROM THE WEST LINE OF
SECTION 4, TOWNSHIP 20 SOUTH,
RANGE 34 EAST, N.M.P.M.
LEA COUNTY, STATE OF NEW MEXICO

AUGUST 29, 2013

SURVEY NO. 1897

MADRON SURVEYING, INC. 301 SOUTH CANAL CARLSBAD, NEW MEXICO
(575) 234-3341

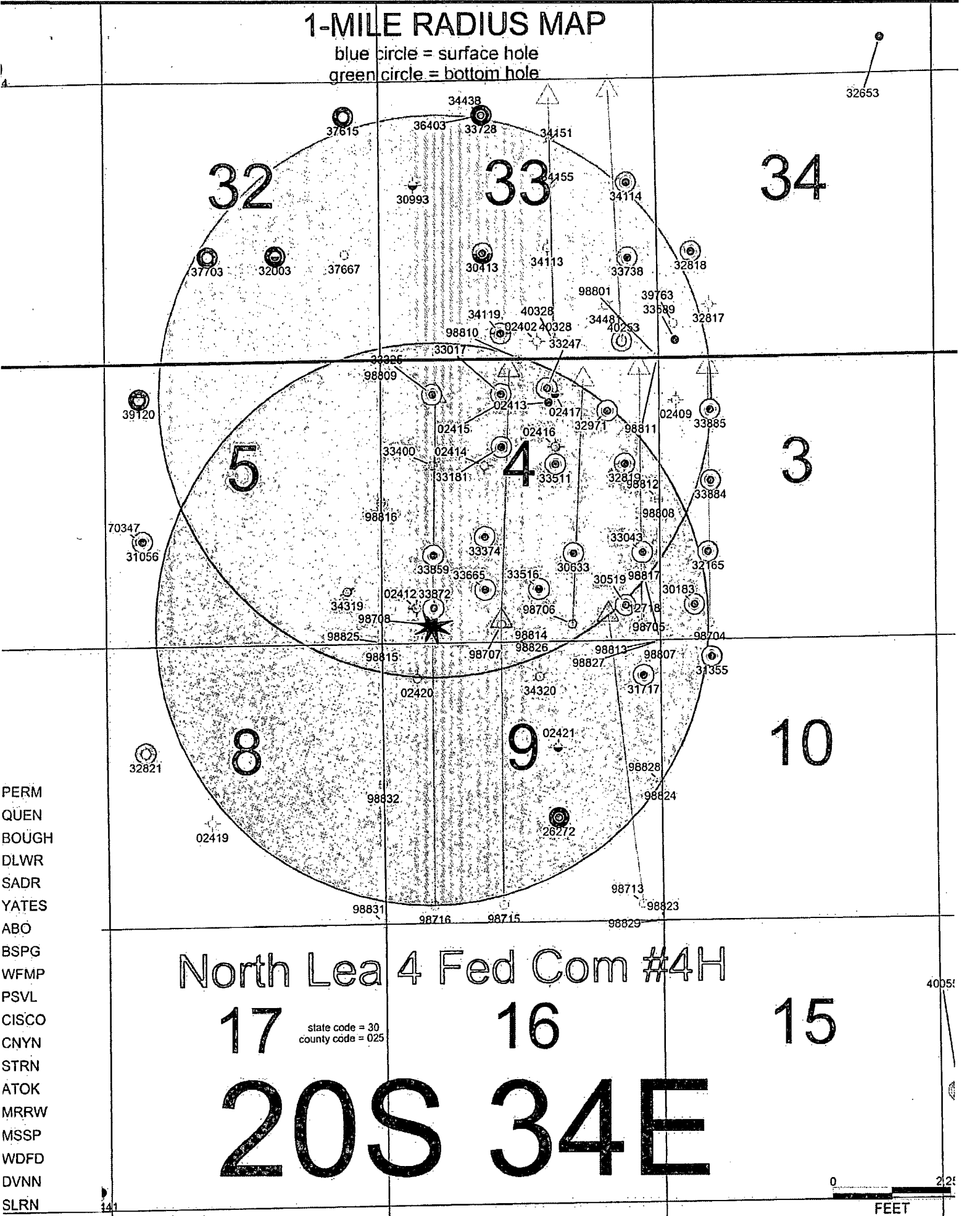


Google earth



1-MILE RADIUS MAP

blue circle = surface hole
green circle = bottom hole



North Lea 4 Fed Com #4H

17

state code = 30
county code = 025

16

15

20S 34E

0 225
FEET

PERM
QUEN
BOUGH
DLWR
SADR
YATES
ABO
BSPG
WFMP
PSVL
CISCO
CNYN
STRN
ATOK
MRRW
MSSP
WDFD
DVNN
SLRN