

ONSHORE OIL & GAS ORDER NO. 1  
Approval of Operations on Onshore  
Federal and Indian Oil and Gas Leases

**Salado Draw 18 26 33 FED #4H**

200' FNL and 1,993' FWL  
Section 19, Township 26, Range 33  
Lea County, New Mexico

**A. EXISTING ROADS/LEASE ROADS (Surface Land)**

Driving directions are from Jal, New Mexico. The location is approximately 50.5 miles from the nearest town, which is Jal, New Mexico.

The proposed access to the location will be off of County Road 1 (East) on to Battle Axe Road for approximately 6 miles. You will turn to the North in Section 29 – 26S-33E and go approximately ¼ mile, then turn West to Chevron's existing Porter Brown 1H well (all access at this point is on existing roads). On the West side of Porter Brown Chevron will construct approximately 8,303 ft of new road being 14' in travel way width with a maximum disturbance area of 20' will be used, and in accordance with guidelines set forth in the BLM Onshore Orders. No turnouts are expected. The Road Easement will be submitted in a separate SF-299. Please see attached road access plat for further clarification.

Existing county and lease roads will be used to enter proposed access road.

Surface disturbance and vehicular travel will be limited to the approved location and approved access route. Any additional area needed will be approved in advance.

Location, access, and vicinity plats attached hereto. **See Exhibits A-1 to A-4**

Plans for improvement and/or maintenance of existing roads planned to access the well site:

Chevron will improve or maintain existing roads in a condition the same as or better than before operations begin. Chevron will repair pot holes, clear ditches, repair the crown, etc. All existing structures on the entire access route such as cattle guards, other range improvement projects, culverts, etc. will be properly repaired or replaced if they are damaged or have deteriorated beyond practical use. We will prevent and abate fugitive dust as needed, whether created by vehicular traffic, equipment operations, or wind events. BLM written approval will be acquired before application of surfactants, binding agents, or other dust suppression chemicals on roadways.)

**B. NEW OR RECONSTRUCTED ACCESS ROADS (Surface Land)**

There will be approximately 8,303' of new access to be constructed.

The new access road will be upgraded to a crowned and ditched road and will be graveled as needed for drilling. If requested by the surface owner, upgrading of this portion of the road will be kept to a minimum.

All existing roads (previously improved) will be used "as is" with the exception of minor blading as needed.

Surface disturbance and vehicular travel will be limited to the approved access route. Any additional area will be approved in advance.

Road Width: 14 – 20 feet traveling surface.

Maximum Grade: Road gradient less than 8%

Crown Design: 2%

Turnouts will be installed along the access route as needed.

Ditch design: Drainage, interception and outlet.

Erosion Control: 6" rock under road.

Re-vegetation of Disturbed Area: All disturbed areas will be seeded by Broadcast or Drill and Crimp. Ground conditions will determine the method used.

Cattle guard(s) will be installed as needed.

Major Cuts and Fills: 2:1 Slope.

Surfacing material (road base derived from caliche or river rock) will be placed on the access road during construction. All surface disturbing activities will be discussed with and agreed to with the surface owner.

**C. LOCATION OF EXISTING WELLS (Geology)**

All wells located within a 1-mile radius of the Surface & Bottom Hole Location. See Exhibit B.

**D. LOCATION OF PRODUCTION FACILITIES (Surface Land/Facilities)**

It is anticipated that production facilities will be located on a dedicated facility pad South of the 1H and 2H well pad in Section 19 and oil to be sold at that tank battery.

The production line will be surface-laid 4" Flexpipe with a working pressure less than 125 psig ran along existing disturbances.

Oil and gas measurement will be installed on this well location. See Exhibits C.

The permanent water disposal system will consist of a water transfer pipeline to the SWD station in Section 13. The permanent electrical supply will be determined prior to construction of permanent distribution lines, but will follow the access road in its own 15' ROW. A generator will be utilized until permanent power is connected.

**E. LOCATION AND TYPES OF WATER SUPPLY (Surface Land)**

Water will be obtained from a private water source.

Chevron will utilize the fresh water holding pond in Section 32 -T26S-R32E (Paducah Breaks State holding pond) and the holding pond located in Section 29-26S-33E, and the holding pond located in Section 19-26S-32E.

Water will be piped from the Section 32 -T26S-R32E pond to Chevron's freshwater holding pond located in Section 29-T26S-R33E and then on to Chevron's freshwater holding pond located in Section 19-T26S-R33E. See attached plat depicting such.

A 10" black expanding water pipe transfer line will run approx. 41,255.58 ft beginning from Chevron's freshwater holding pond located in Section 32-T26S-R32E to Chevron's freshwater holding pond located in Section 19-T26S-R33E. All transfer lines will be laid on a "**pre-disturbed**) area.

**F. CONSTRUCTION MATERIALS (Facilities)**

All construction materials will be used from the nearest Private, BLM, or State pit. All material (i.e. shale) will be acquired from private or commercial sources.

No construction material will be needed for well pad construction; subsurface spoil material will be utilized.

Surfacing material (caliche) will be purchased from a supplier having a permitted source of materials.

The entire location will be fenced with **barb/woven wire**

**G. METHODS FOR HANDLING WASTE DISPOSAL – Ask Kyle Johnson- Vicente**

A closed system will be utilized consisting of above ground steel tanks.

All wastes accumulated during drilling operations will be contained in a portable trash cage and removed from location and deposited in a state approved facility.

Disposal of cuttings: **Tervita, LLC**

Sewage and gray water before and after treatment are not allowed to be discharged to the ground. They are collected from storage tank(s) and portable potty at drilling and completions locations and transported by an approved transporter to be disposed of at a Chevron's select-for-use disposal facility.

**H. ANCILLARY FACILITIES (Facilities)**

It is anticipated that a compressor station will be constructed to the East side of the battery pad for the purposes of gas lift. The distribution system will be buried pipe within the 43' pipeline ROW along the South of the access road.

**I. WELLSITE LAYOUT**

The proposed site layout plat is attached showing the Nabors Pace X orientation and equipment location. **See Exhibit D.**

In order to level the location, cut and fill will be required. Please see attached Well Location and Acreage Dedication Plat – Exhibits A-1 to A-4.

A locking gate will be installed at the site entrance.

Any fences cut will be repaired. Cattle guards will be installed, if needed.

**J. PLANS FOR RECLAMATION OF THE SURFACE (Facilities)**

Within 6 months, Chevron will contact BLM Surface Management Specialists to devise the best strategies to reduce the size of the location. Current plans for interim reclamation will consist of reclaiming the pad to +/-50 feet outside the anchors, or approximately 200 x 200 feet. **See Exhibit E.**

In addition, the following procedures shall be followed:

- i. Caliche will be removed from reclaimed areas to increase the success of revegetation. Removed caliche that is free of contaminants may be reused for future projects.
- ii. The portions of the cleared well site not needed for operational and safety purposes will be re-contoured to a final or intermediate contour that blends with the surrounding topography as much as possible. Sufficient level area remains for setup of a workover rig and to park vehicles/equipment.
- iii. All surface soil materials (topsoil) are to be removed from the entire cut and fill area and temporarily stockpiled for reuse during interim reclamation. Topsoil will be respread over areas not needed for all-weather operations to ensure successful revegetation. Any topsoil pile set aside should be revegetated to prevent it from eroding and to help maintain its biological viability.
- iv. After all disturbed areas have been satisfactorily prepared, these areas need to be revegetated with the seed mixture advised by the BLM. The seed mix will be evenly and uniformly distributed over the disturbed area. Seeding will be accomplished by

using a drilling or, when drilling is not available, by broadcasting the seed. When broadcasting the seed, the amount of seed shall be doubled.

- v. Weed control will be used on disturbed land, including the roads, pads, associated pipeline corridor, and adjacent land affected by the operations. There shall be no primary or secondary noxious weeds in the seed mixture used for reseeding.

### **In the Event of a Dry Hole/Final Reclamation**

Upon final abandonment of the well, a new reclamation plan will be submitted with the Notice of Intent to Abandon (NIA) or Subsequent Report Plug and Abandon (SRA) using the Sundry Notices and Reports on Wells Form 3160-5. The location will be restored to as near as original condition as possible. Reclamation of the surface shall be done in strict compliance with the existing New Mexico Oil Conservation Division regulations and BLM regulations.

In addition, the following procedures shall be followed:

- i. Caliche material from the well pad and access road will be removed and utilized to re-contour to a final contour that blends with the surrounding topography as much as possible. Any caliche material not used will be utilized to repair roads within the lease.
- ii. On sloped ground, the topsoil and interim vegetation will be restripped from portions of the site that are not at the original contour, the well pad recontoured, and the topsoil will be respread over the entire disturbed.
- iii. Topsoil will be distributed over the reclamation area and cross ripped to control erosion
- iv. After all disturbed areas have been satisfactorily prepared, these areas need to be revegetated with the seed mixture advised by the BLM. The seed mix will be evenly and uniformly distributed over the disturbed area. Seeding will be accomplished by using a drilling or, when drilling is not available, by broadcasting the seed. When broadcasting the seed, the amount of seed shall be doubled.  
Weed control will be used on disturbed land, including the roads, pads, associated pipeline corridor, and adjacent land affected by the operations. There shall be no primary or secondary noxious weeds in the seed mixture used for reseeding.

### **K. SURFACE OWNER** Bureau of Land Management

### **ROAD OWNERSHIP**

All access roads are owned by County and Federal and are as follows: County Road 1 (East) on to Battle Axe Road for approximately 6 miles. You will turn to the North in Section 29 – 26S-33E and go approximately ¼ mile, then turn West to Chevron's existing Porter Brown 1H well (all access at this point is on existing roads). On the West side of Porter Brown Chevron will construct approximately 8,303 ft of new road being 14' in travel way width with a maximum disturbance area of 20' will be used, and in accordance with guidelines set forth in the BLM Onshore Orders. No turnouts are expected. The Road Easement will be submitted in a separate SF-299. Please see attached road access plat for further clarification.

**L. ADDITIONAL INFORMATION**

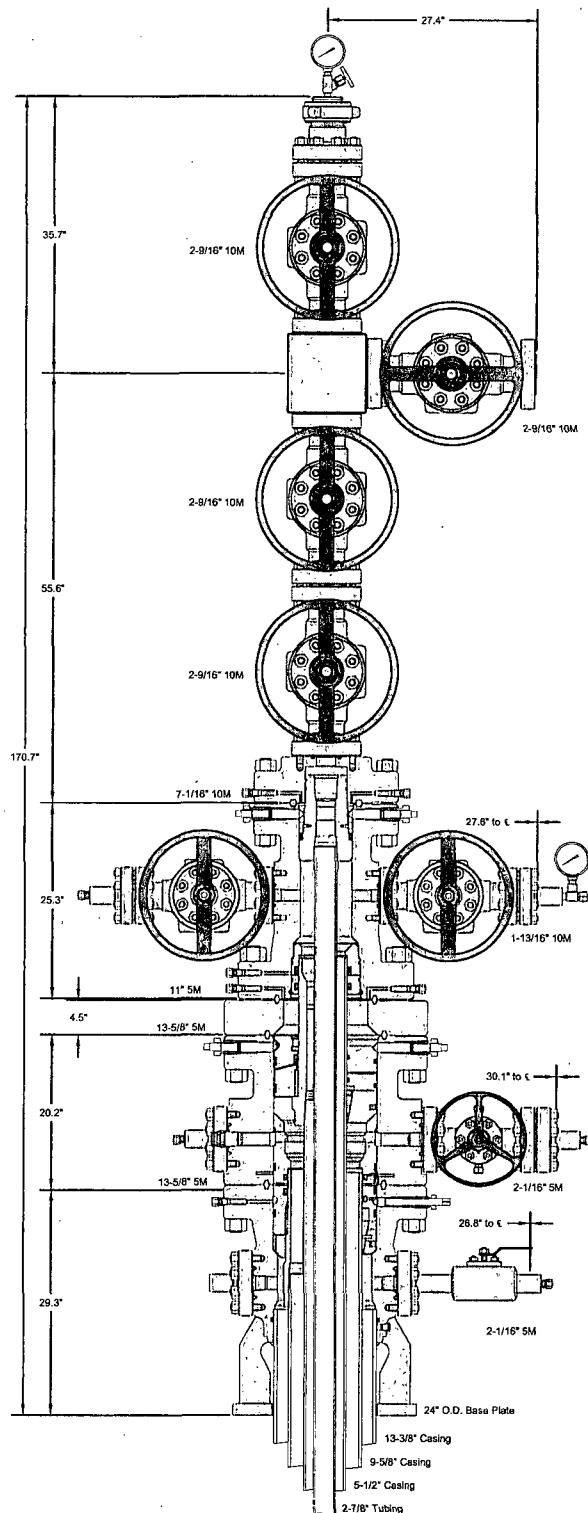
Class III cultural resource inventory report was prepared by Boone Arch Services of NM, Carlsbad, New Mexico for the proposed location. A copy of the report has been sent to the BLM office under separate cover and is also attached for reference. **Exhibit F.**

**M. CHEVRON REPRESENTATIVES**

<b>Project Manager</b> James Ward 1400 Smith Street, 40055 Houston, TX 77002 Office: 713-372-1748 <a href="mailto:JWGB@chevron.com">JWGB@chevron.com</a>	<b>Drilling Engineer</b> Vicente Ruiz 1400 Smith Street, 43104 Houston, TX 77002 Office: +1 (713) 372-6181 <a href="mailto:vruiz@chevron.com">vruiz@chevron.com</a>
<b>Surface Land Representative</b> Stephen Tarr 15 Smith Road, 5103 Claydesta Plaza Midland, TX 79705 Office: +1 432-687-7956 Cell: +1 432-238-6316 <a href="mailto:STarr@chevron.com">STarr@chevron.com</a>	<b>Facility Engineer</b> Nick Wann 15 Smith Road, 6220 Claydesta Plaza Midland, TX 79705 Office: +1 504-224-0597 <a href="mailto:NWann@chevron.com">NWann@chevron.com</a>
<b>Geologist</b> Patrick Taha 1400 Smith Street, 40034 Houston, TX 77002 Office: +1 713-372-1543 <a href="mailto:PatrickTaha@chevron.com">PatrickTaha@chevron.com</a>	<b>Execution Team Lead</b> Ed Van Reet 1400 Smith Street. 40040 Houston, TX 77002 <a href="mailto:EVTR@chevron.com">EVTR@chevron.com</a> 713-372-1559
<b>Regulatory Specialist</b> Cindy Herrera-Murillo 1616 W Bender Blvd, 121 Hobbs, NM 88240 Office: +1 575-263-0431 <a href="mailto:CHerreraMurillo@chevron.com">CHerreraMurillo@chevron.com</a>	<b>Land</b> Robert Morrison 1400 Smith Street. 45010 Houston, TX 77002 Office: 713-372-6707 <a href="mailto:UAMZ@Chevron.com">UAMZ@Chevron.com</a>



GE Oil & Gas



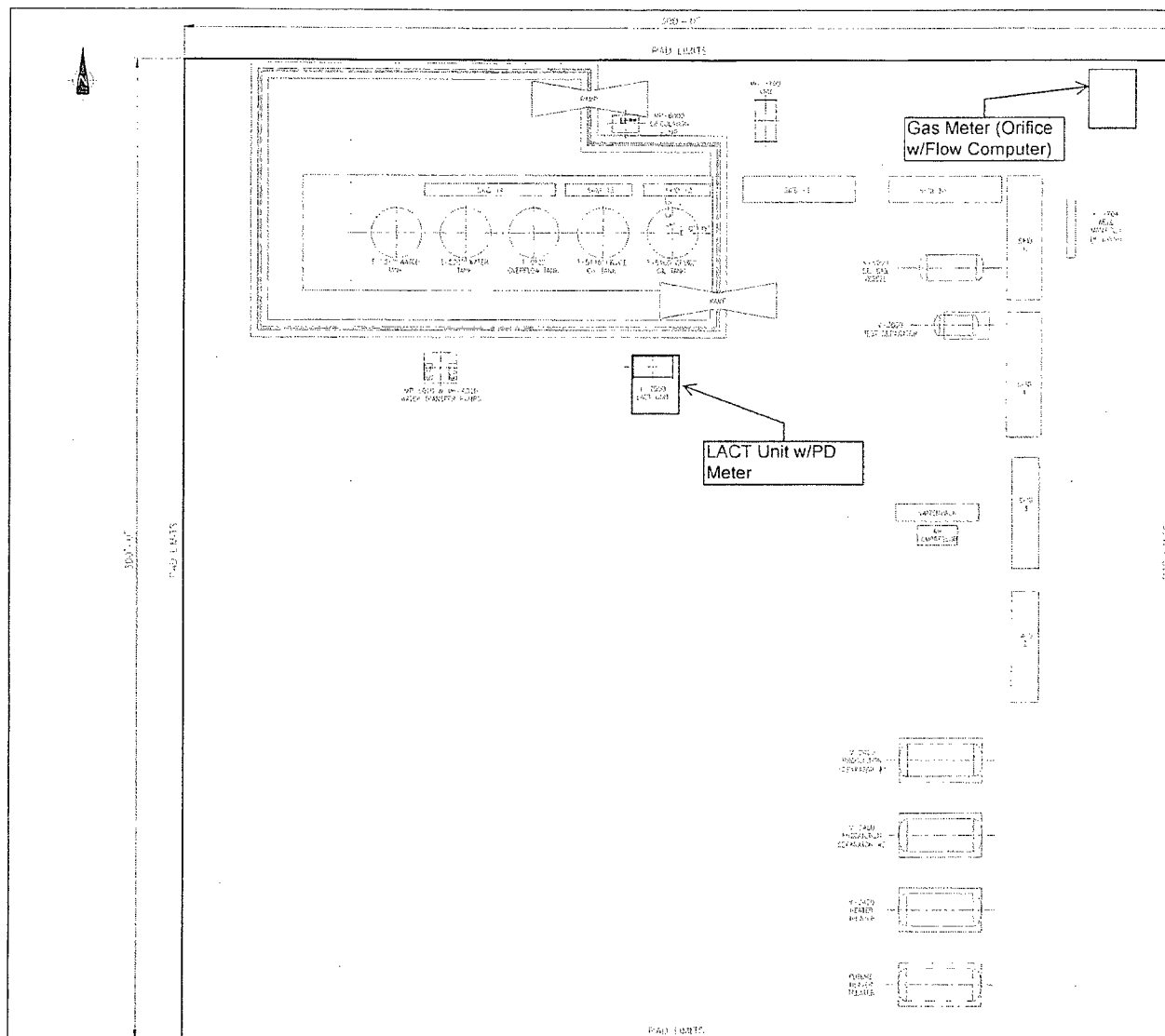
This drawing is the property of GE Oil & Gas Pressure Control LP and is considered confidential. Unless otherwise approved in writing, neither it nor its contents may be used, copied, transmitted or reproduced except for the sole purpose of GE Oil & Gas Pressure Control LP.

CHEVRON USA, INC.  
DELAWARE BASIN

13-3/8" x 9-5/8" x 5-1/2" x 2-7/8" 10M SH2/Conventional  
Wellhead Assembly, With DSA, T-EBS-F Tubing Head,  
T-EN Tubing Hanger and A5PEN Adapter Flange

DRAWN	VJK	19MAR13
APPRV	KN	19MAR13
FOR REFERENCE ONLY		
DRAWING NO.		AE23705

EXHIBIT C



ISSUED FOR REVIEW 1-2000 2/22/14	ISSUED FOR REVIEW 1-2000 2/22/14	ISSUED FOR REVIEW 1-2000 2/22/14	ISSUED FOR REVIEW 1-2000 2/22/14	ISSUED FOR REVIEW 1-2000 2/22/14
ISSUED FOR REVIEW 1-2000 2/22/14	ISSUED FOR REVIEW 1-2000 2/22/14	ISSUED FOR REVIEW 1-2000 2/22/14	ISSUED FOR REVIEW 1-2000 2/22/14	ISSUED FOR REVIEW 1-2000 2/22/14

ISSUED FOR REVIEW

R 32 E

T  
26  
S

Sec. 15

Bureau of Land Management

Sec. 14

Bureau of Land Management

Existing  
Kiehne Ranch  
15 26 32 USA 1H  
Drill site

Existing  
Lease Road to  
be used

±3846', ±1.59 Acres

Existing  
Red Hills West  
22 Fed Com 1H  
Drill site

±842',  
±0.27  
Acres

PROPOSED  
ACCESS ROAD  
±19,950', ±6.41 ACRES

±5431', ±1.75 Acres

Sec. 22

Bureau of Land Management

Sec. 23

Bureau of Land Management

FOR THE EXCLUSIVE USE OF  
CHEVRON U.S.A. INC.  
I, WM. J. DANIEL III, Registered Professional  
Land Surveyor, do hereby state this plat is true  
and correct to the best of my knowledge.



**NOTE:**

Please be advised, that while reasonable efforts are made to locate and verify pipelines and anomalies using our standard pipeline locating equipment, it is impossible to be 100 % effective. As such, we advise using caution when performing work as there is a possibility that pipelines and other hazards, such as fiber optic cables, PVC pipelines, etc. may exist undetected on site.

**NOTE:**

Many states maintain information centers that establish links between those who dig (excavators) and those who own and operate underground facilities (operators). It is advisable and in most states, law, for the contractor to contact the center for assistance in locating and marking underground utilities. For guidance: New Mexico One Call - [www.nmonecall.org](http://www.nmonecall.org)

**DISCLAIMER:** At this time, C.H. Fenstermaker & Associates, LLC has not performed nor was asked to perform any type of engineering, hydrological modeling, flood plain, or "No Rise" certification analyses, including but not limited to determining whether the project will impact flood hazards in connection with federal/FEMA, state, and/or local laws, ordinances and regulations. Accordingly, Fenstermaker makes no warranty or representation of any kind as to the foregoing issues, and persons or entities using this information shall do so at their own risk.

SCALE: 1"=600'

600' 0 300' 600'

DETAIL

CHEVRON U.S.A. INC.

ACCESS ROAD

DETAIL

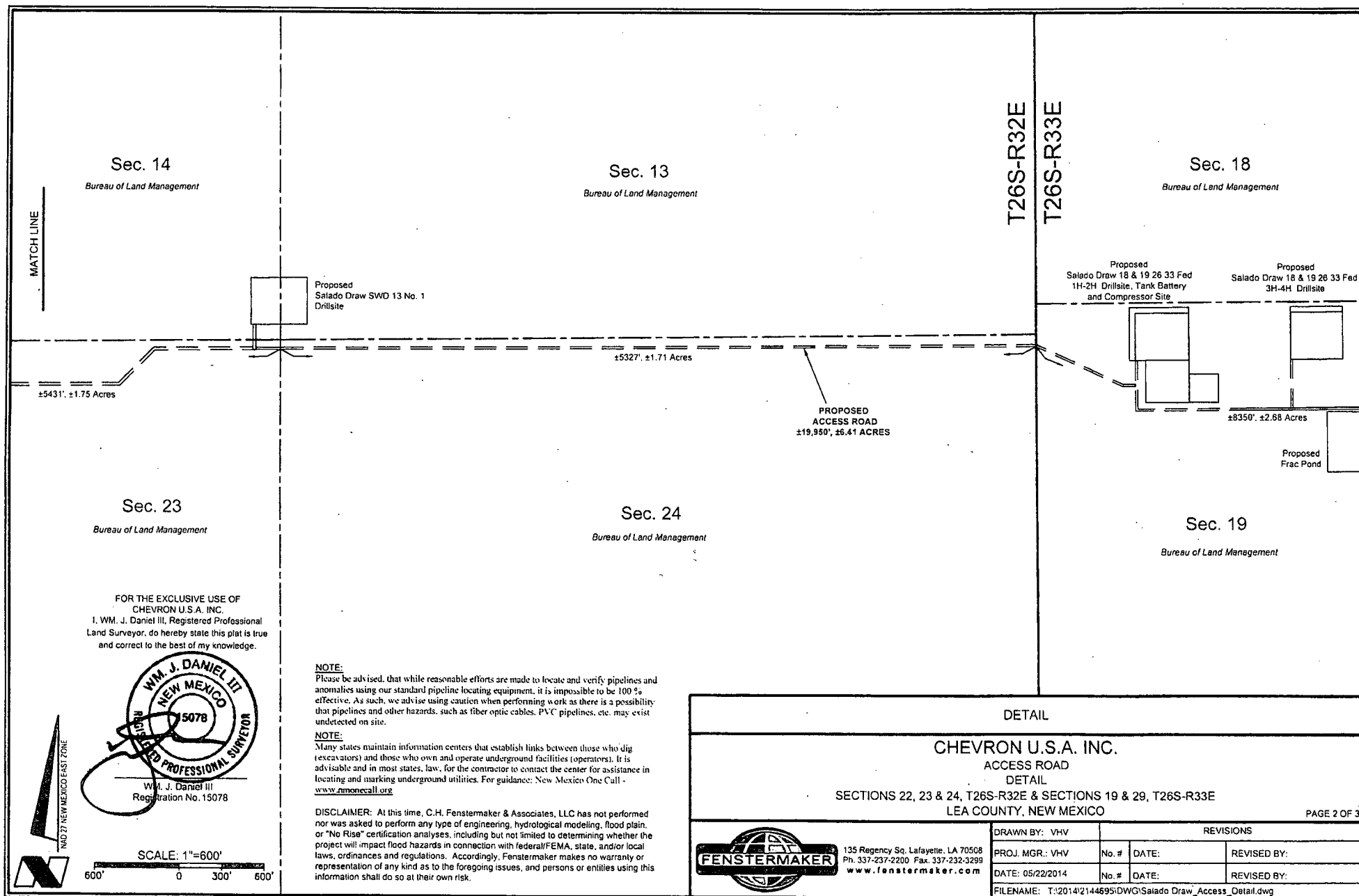
SECTIONS 22, 23 & 24, T26S-R32E & SECTIONS 19 & 29, T26S-R33E  
LEA COUNTY, NEW MEXICO

PAGE 1 OF 3



135 Regency Sq, Lafayette, LA 70508  
Ph. 337-237-2200 Fax. 337-232-3299  
[www.fenstermaker.com](http://www.fenstermaker.com)

DRAWN BY: VHV		REVISIONS			
PROJ. MGR.: VHV	No. #	DATE:		REVISED BY:	
DATE: 05/22/2014	No. #	DATE:		REVISED BY:	
FILENAME: T:\2014\2144695\DWG\Salado Draw_Access_Detail.dwg					



T26S-R32E  
T26S-R33E

**Sec. 18**  
Bureau of Land Management

**NOTE:**  
Please be advised, that while reasonable efforts are made to locate and verify pipelines and anomalies using our standard pipeline locating equipment, it is impossible to be 100% effective. As such, we advise using caution when performing work as there is a possibility that pipelines and other hazards, such as fiber optic cables, PVC pipelines, etc. may exist undetected on site.

**NOTE:**  
Many states maintain information centers that establish links between those who dig (excavators) and those who own and operate underground facilities (operators). It is advisable and in most states, law, for the contractor to contact the center for assistance in locating and marking underground utilities. For guidance: New Mexico One Call - [www.nmonecall.org](http://www.nmonecall.org)

**DISCLAIMER:** At this time, C.H. Fenstermaker & Associates, LLC has not performed nor was asked to perform any type of engineering, hydrological modeling, flood plain, or "No Rise" certification analyses, including but not limited to determining whether the project will impact flood hazards in connection with federal/FEMA, state, and/or local laws, ordinances and regulations. Accordingly, Fenstermaker makes no warranty or representation of any kind as to the foregoing issues, and persons or entities using this information shall do so at their own risk.

Proposed  
Salado Draw 18 & 19 26 33 Fed  
1H-2H Drillsite, Tank Battery &  
Compressor Site

Proposed  
Salado Draw 18 & 19 26 33 Fed  
3H-4H Drillsite

Proposed  
Frac Pond

**PROPOSED  
ACCESS ROAD**  
±19,960', ±6.41 ACRES

**Sec. 19**  
Bureau of Land Management

**Sec. 20**  
Bureau of Land Management

Existing Lease Road  
to be Used  
±1634', ±0.75 Acres

Existing  
Porter Brown 1H  
Drillsite

Proposed  
Salado Draw 29 26 33  
Fed Com 1H-4H  
Drillsite & Satellite  
Battery

Proposed  
Salado Draw 29 26 33  
Fed Com 5H-8H  
Drillsite

Proposed  
Moose's Tooth 29 26 33  
Fed Com 1H Drillsite

Existing  
Frac  
Pond

**PROPOSED ACCESS  
ROAD**  
±3,348', ± 1.08 ACRES

Proposed  
Frac Pond  
Expansion

**Sec. 30**  
Bureau of Land Management

**Sec. 29**  
Bureau of Land Management

FOR THE EXCLUSIVE USE OF  
CHEVRON U.S.A. INC.  
I, WM. J. Daniel III, Registered Professional  
Land Surveyor, do hereby state this plat is true  
and correct to the best of my knowledge.



**CHEVRON U.S.A. INC.**  
**ACCESS ROAD**  
**DETAIL**

SECTIONS 22, 23 & 24, T26S-R32E & SECTIONS 19 & 29, T26S-R33E  
LEA COUNTY, NEW MEXICO

PAGE 3 OF 3



135 Regency Sq. Lafayette, LA 70508  
Ph. 337-237-2200 Fax. 337-232-3299  
[www.fenstermaker.com](http://www.fenstermaker.com)

SCALE: 1"=1000'  
1000' 0 500' 1000'

DRAWN BY: VHV		REVISIONS	
PROJ. MGR.: VHV	No. #	DATE:	REVISED BY:
DATE: 05/22/2014	No. #	DATE:	REVISED BY:
FILENAME: T:\2014\2144695\DWG\Salado Draw_Access_Detail.dwg			



Well Pad/Facility Pad (typical)

varies

43'

Flowline ROW

14'

Road  
EDS ROW

15'

1" = 30'

TYPICAL DETAIL SECTION 19



**Chevron**

Midcontinent Business Unit

SALADO DRAW  
DRILLING PROGRAM  
ROAD DETAIL

TYPICAL ROAD SECTION DETAIL

METES AND BOUNDS DESCRIPTION OF  
(4) PROPOSED FLOWLINES LOCATED IN  
SECTION 19, T26S-R33E  
LEA COUNTY, NEW MEXICO

SALADO DRAW 18 & 19 26 33 FED 3H & 4H FLOWLINES

SURVEY OF (4) PROPOSED FLOWLINES 1,241.90 FEET OR 75.27 RODS IN LENGTH CROSSING BUREAU OF LAND MANAGEMENT LAND IN THE NORTHEAST QUARTER OF THE NORTHWEST QUARTER AND THE NORTHWEST QUARTER OF THE NORTHWEST QUARTER OF SECTION 19, TOWNSHIP 26 SOUTH RANGE 33 EAST, N.M.P.M. LEA COUNTY, NEW MEXICO.

COMMENCING AT A FOUND 2" IRON PIPE, LOCATED AT THE NORTH QUARTER CORNER OF SAID SECTION 19 TOWNSHIP 26 SOUTH RANGE 33 EAST; THENCE SOUTH 63 DEGREES 45 MINUTES 35 SECONDS WEST 929.68 FEET TO THE POINT OF BEGINNING. SAID POINT OF BEGINNING HAVING THE FOLLOWING COORDINATES: X= 723,042.25, Y= 377,211.73 (NEW MEXICO STATE PLANE COORDINATE EAST ZONE, NAD 27).

THENCE SOUTH 00 DEGREES 24 MINUTES 08 SECONDS EAST 337.87 FEET;  
THENCE SOUTH 89 DEGREES 33 MINUTES 50 SECONDS WEST 518.96 FEET;  
THENCE SOUTH 89 DEGREES 34 MINUTES 30 SECONDS WEST 347.00 FEET;  
THENCE NORTH 00 DEGREES 24 MINUTES 48 SECONDS WEST 38.07 FEET TO THE POINT OF ENDING. SAID POINT OF ENDING HAVING THE FOLLOWING COORDINATES: X= 722,178.42 Y= 376,905.42 (NEW MEXICO STATE PLANE COORDINATE EAST ZONE, NAD 27).

THE BEARINGS RECITED HEREON ARE ORIENTED TO NEW MEXICO STATE PLANE COORDINATE SYSTEM, EAST ZONE, NAD 27.

THIS DESCRIPTION REPRESENTS A SURVEY MADE ON THE GROUND FOR A SURFACE EASEMENT AND INTENDED SOLELY FOR THAT PURPOSE. THIS DESCRIPTION DOES NOT REPRESENT A BOUNDARY SURVEY.

**NOTE:**

Please be advised, that while reasonable efforts are made to locate and verify pipelines and anomalies using our standard pipeline locating equipment, it is impossible to be 100% effective. As such, we advise using caution when performing work as there is a possibility that pipelines and other hazards, such as fiber optic cables, PVC pipelines, etc. may exist undetected on site.

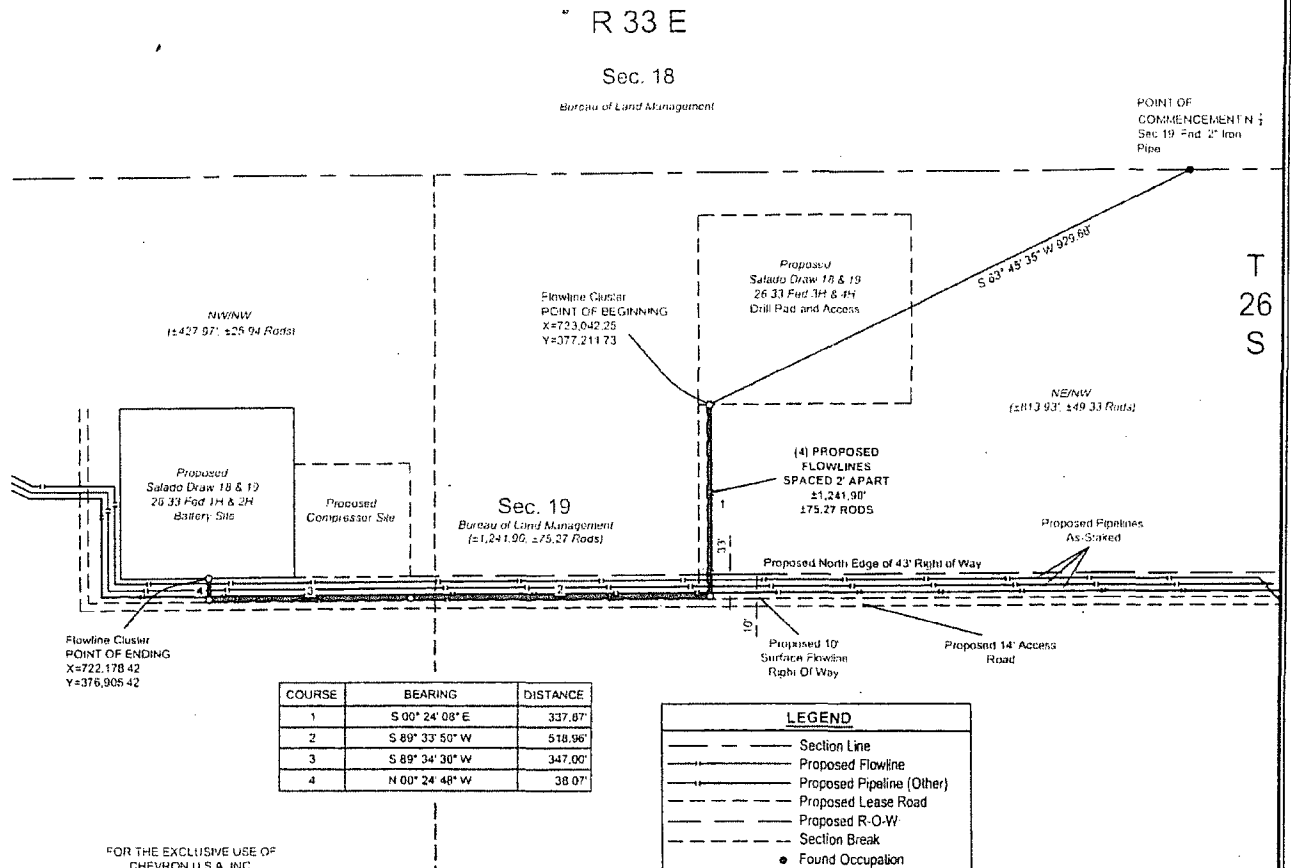
**NOTE:**

Many states maintain information centers that establish links between those who dig (excavators) and those who own and operate underground facilities (operators). It is advisable and in most states, law, for the contractor to contact the center for assistance in locating and marking underground utilities. For guidance: New Mexico One Call - [www.nmonecall.org](http://www.nmonecall.org)

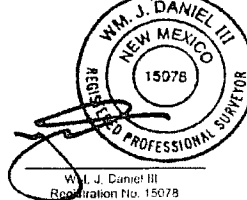
DISCLAIMER: At this time, C.H. Fenstermaker & Associates, LLC has not performed nor was asked to perform any type of engineering, hydrological modeling, flood plain, or "No Rise" certification analyses, including but not limited to determining whether the project will impact flood hazards in connection with federal/FEMA, state, and/or local laws, ordinances and regulations. Accordingly, Fenstermaker makes no warranty or representation of any kind as to the foregoing issues, and persons or entities using this information shall do so at their own risk.

Scale: 1"=200'

200' 0 100' 200'



FOR THE EXCLUSIVE USE OF  
CHEVRON U.S.A. INC.  
I, WM. J. DANIEL III, Registered Professional  
Land Surveyor, do hereby state this plat is true  
and correct to the best of my knowledge.

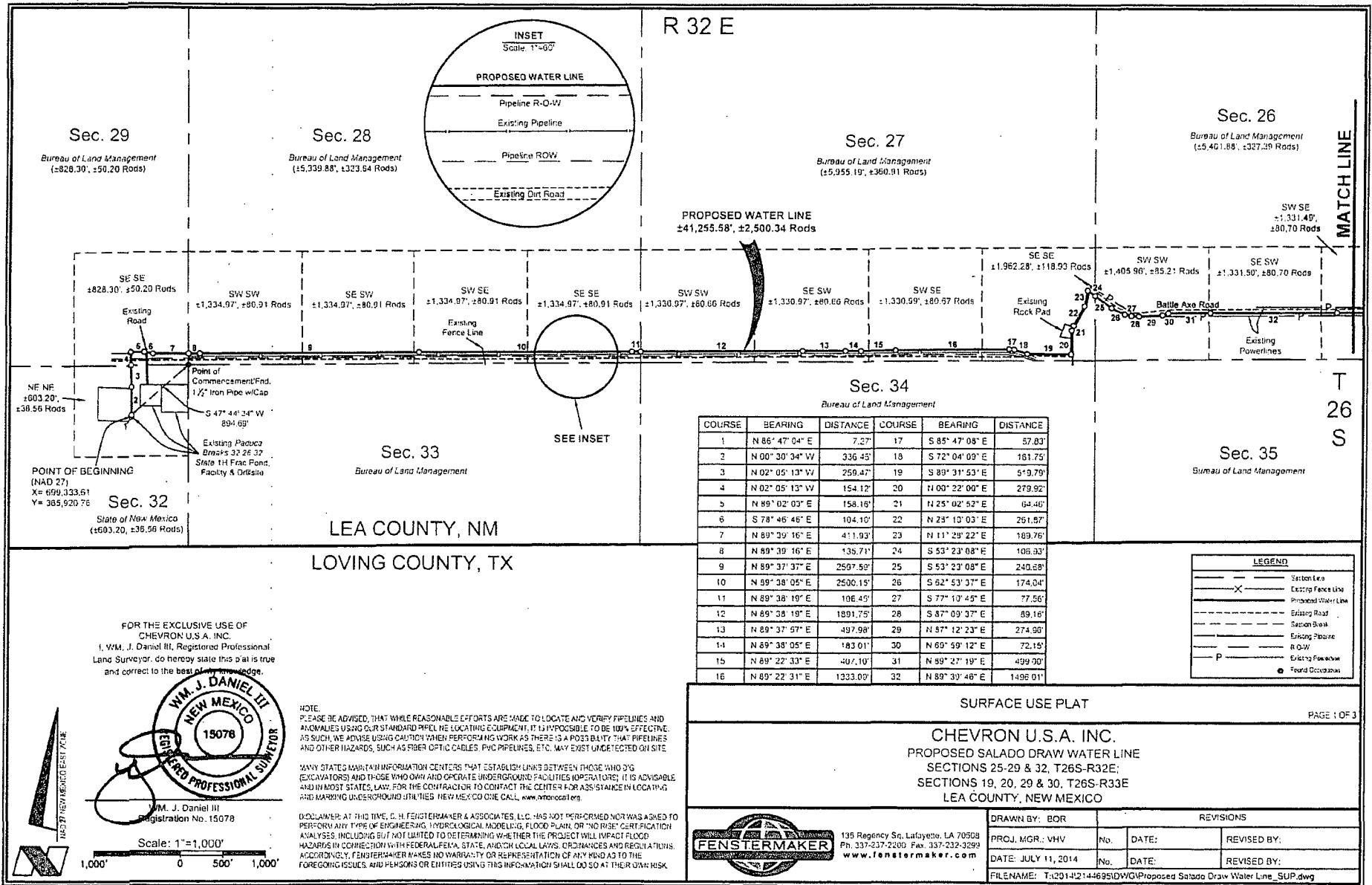


Wm. J. Daniel III  
Registration No. 15078

FLOWLINE SUP			
CHEVRON U.S.A. INC.			
PROPOSED FLOWLINES			
SALADO DRAW 18 & 19 26 33 FED 3H & 4H WELLS			
SECTION 19, T26S-R33E			
LEA COUNTY, NEW MEXICO			
DRAWN BY: GDG		REVISIONS	
PROJ: MCR_VHV	No. 1	DATE: June 9, 2014	REVISED BY: GDG
DATE: MAY 30, 2014	No.	DATE:	REVISED BY:
JOB NUMBER: T26S-R33E-SALADO DRAW 18 & 19 26 33 FED 3H & 4H WELLS SUP			

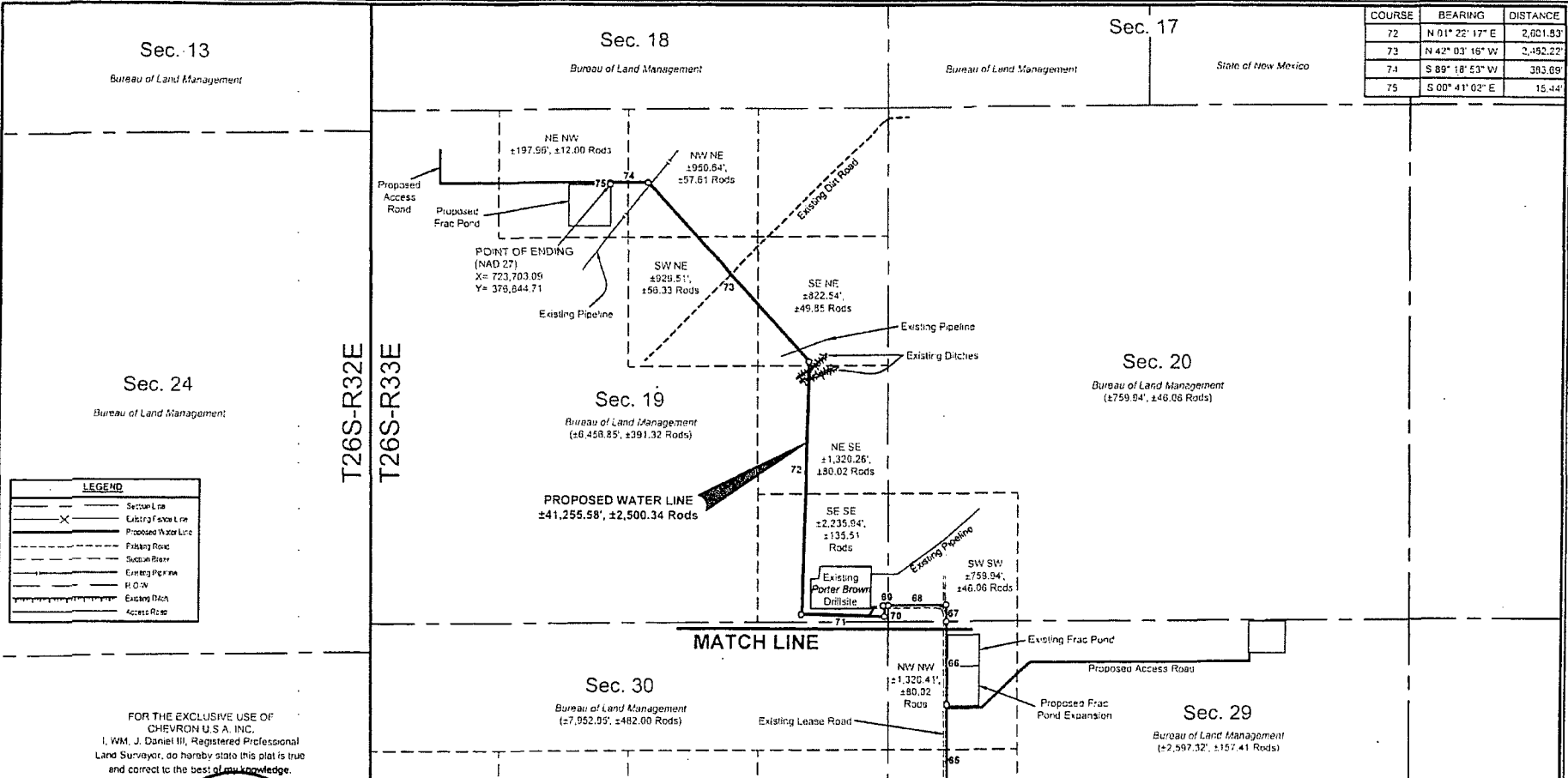


135 Regency Sq. Lafayette, LA 70505  
Ph: 337-237-2200 Fax: 337-237-1298  
[www.fenstermaker.com](http://www.fenstermaker.com)





COURSE	BEARING	DISTANCE
72	N 01° 22' 17" E	2,601.83'
73	N 42° 03' 16" W	2,452.22'
74	S 89° 18' 53" W	393.69'
75	S 00° 41' 02" E	15.44'



LEGEND	
Section Line	---
Existing Fence Line	-X-
Proposed Water Line	---
Existing Road	---
Section Boundary	---
Existing Pipeline	---
H.O.W.	---
Existing Ditch	---
Access Road	---

FOR THE EXCLUSIVE USE OF  
CHEVRON U.S.A. INC.  
I, WM. J. Daniel III, Registered Professional  
Land Surveyor, do hereby state this plat is true  
and correct to the best of my knowledge.



WM. J. Daniel III  
Registration No. 15078

Scale: 1"=1,000'  
1,000' 0 500' 1,000'

NOTE: PLEASE BE ADVISED THAT WHILE REASONABLE EFFORTS ARE MADE TO LOCATE AND VERIFY PIPELINES AND ANCHORS USING OUR STANDARD PRELIMINARY EQUIPMENT, IT IS IMPOSSIBLE TO BE 100% EFFECTIVE. AS SUCH, WE ADVISE USING CAUTION WHEN PERFORMING WORK AS THERE IS A POSSIBILITY THAT PIPELINES AND OTHER HAZARDOUS, SUCH AS FIBER OPTIC CABLES, P/C PIPELINES, ETC. MAY EXIST UNDETECTED ON SITE.

MANY STATES MAINTAIN INFORMATION CENTERS THAT ESTABLISH LINKS BETWEEN THOSE WHO DIG (EXCAVATORS) AND THOSE WHO OWN AND OPERATE UNDERGROUND FACILITIES (OPERATORS). IT IS ADVISABLE ACCORDING TO STATE LAW, FOR THE CONTRACTOR TO CONTACT THE CENTER FOR ASSISTANCE IN LOCATING AND MARKING UNDERGROUND UTILITIES. NEW MEXICO ONE CALL: [www.onecall.org](http://www.onecall.org).

DISCLAIMER: AT THIS TIME, C.H. FEINSTERMAKER & ASSOCIATES, LLC HAS NOT PERFORMED NOR WAS ASKED TO PERFORM ANY TYPE OF ENGINEERING, HYDROLOGICAL MODELING, FLOOD PLAIN, OR "NO RISE" CERTIFICATION ANALYSES, INCLUDING BUT NOT LIMITED TO DETERMINING WHETHER THE PROJECT WILL IMPACT FLOOD HAZARDS IN CONNECTION WITH FEDERAL, STATE, AND/OR LOCAL LAWS, ORDINANCES AND REGULATIONS. ACCORDINGLY, FEINSTERMAKER MAKES NO WARRANTY OR REPRESENTATION OF ANY KIND AS TO THE FOREGOING ISSUES, AND PERSONS OR ENTITIES USING THIS INFORMATION SHALL DO SO AT THEIR OWN RISK.

SURFACE USE PLAT			
PAGE 3 OF 3			
<b>CHEVRON U.S.A. INC.</b> <b>PROPOSED SALADO DRAW WATER LINE</b> <b>SECTIONS 25-29 &amp; 32, T26S-R32E;</b> <b>SECTIONS 19, 20, 29 &amp; 30, T26S-R33E</b> <b>LEA COUNTY, NEW MEXICO</b>			
<b>FEINSTERMAKER</b> 135 Regency Sq. Lafayette, LA 70508 Ph. 337-237-2200 Fax. 337-232-3299 <a href="http://www.feinstermaker.com">www.feinstermaker.com</a>		DRAWN BY: BOR PROJ. MGR.: VHV DATE: JULY 11, 2014 FILENAME: T:\2014\2144695\DWG\Proposed Salado Draw Water Line_SUP.dwg	
REVISIONS No. DATE REVISOR No. DATE REVISOR		REVISIONS No. DATE REVISOR No. DATE REVISOR	

**NOTE:**

Please be advised, that while reasonable efforts are made to locate and verify pipelines and anomalies using our standard pipeline locating equipment, it is impossible to be 100 % effective. As such, we advise using caution when performing work as there is a possibility that pipelines and other hazards, such as fiber optic cables, PVC pipelines, etc. may exist undetected on site.

**NOTE:**

Many states maintain information centers that establish links between those who dig (excavators) and those who own and operate underground facilities (operators). It is advisable and in most states, law, for the contractor to contact the center for assistance in locating and marking underground utilities. For guidance, New Mexico One Call System - <http://www.nmonecall.org>.

**DISCLAIMER:** At this time, C.H. Fenstermaker & Associates, LLC has not performed nor was asked to perform any type of engineering, hydrological modeling, flood plain, or "No Rise" certification analyses, including but not limited to determining whether the project will impact flood hazards in connection with federal/FEMA, state, and/or local laws, ordinances and regulations. Accordingly, Fenstermaker makes no warranty or representation of any kind as to the foregoing issues, and persons or entities using this information shall do so at their own risk.

**R 33 E****Sec. 18**

Bureau of Land Management

**T  
26  
S**

NW NW

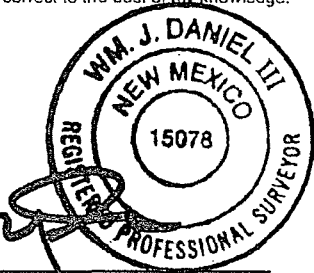
**Sec. 19**

Bureau of Land Management

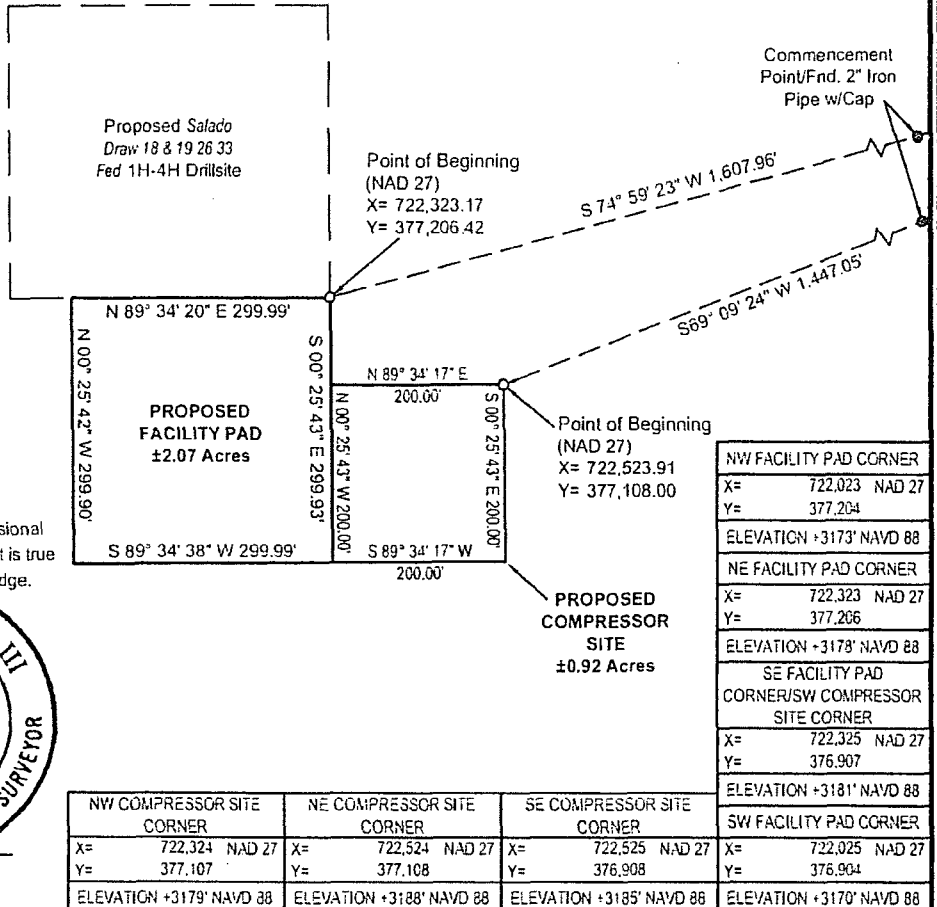
FOR THE EXCLUSIVE USE OF  
CHEVRON U.S.A. INC.

I, WM. J. Daniel III, Registered Professional  
Land Surveyor, do hereby state this plat is true  
and correct to the best of my knowledge.

NAD 27 NEW MEXICO EAST ZONE



WM. J. Daniel III  
Registration No. 15078



SURFACE USE PLAT

Scale: 1"=200'

200' 0 100' 200'

**CHEVRON U.S.A. INC.**

PROPOSED FACILITY PAD &amp; COMPRESSOR SITE

SALADO DRAW 18 &amp; 19 26 33 FED 1H-4H

SECTION 19, T26S-R33E

LEA COUNTY, NEW MEXICO



135 Regency Sq. Lafayette, LA 70508  
Ph. 337-237-2200 Fax. 337-232-3299  
[www.fenstermaker.com](http://www.fenstermaker.com)

DRAWN BY: BOR		REVISIONS	
PROJ. MGR.: VHV	No.	DATE:	REVISED BY:
DATE: AUGUST 29, 2014	No.	DATE:	REVISED BY:
FILENAME: T:\2014\2144669\DWG\Salado Draw 18 & 19 26 33 1H-4H_Facility_SUP.dwg			

**METES AND BOUNDS DESCRIPTION OF  
A CALLED 2.07 ACRE FACILITY PAD  
SECTION 19, T26S-R33E  
LEA COUNTY, NEW MEXICO**

Survey of a proposed 300' x 300' facility pad on Bureau of Land Management land in Section 19 of Township 26 South Range 33 East, Lea County, New Mexico.

**COMMENCING** at a found 2" iron pipe with cap, located at the Northeast corner of the Northwest quarter of said Section 19 Township 26 South Range 33 East; **thence** South 74 degrees 59 minutes 23 seconds West 1,607.96 feet to the **POINT OF BEGINNING**, said **POINT OF BEGINNING** having the following coordinates: X= 722,323.17, Y= 377,206.42 (New Mexico State Plane coordinate system, East zone, NAD 27).

**Thence** South 00 degrees 25 minutes 43 seconds East 299.93 feet;

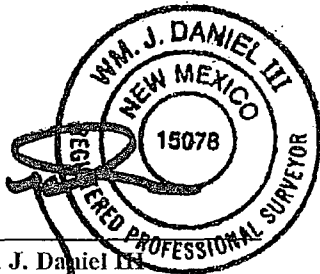
**Thence** South 89 degrees 34 minutes 38 seconds West 299.99 feet;

**Thence** North 00 degrees 25 minutes 42 seconds West 299.90 feet;

**Thence** North 89 degrees 34 minutes 20 seconds East 299.99 feet to the **POINT OF BEGINNING**.

The bearings recited hereon are oriented to New Mexico State Plane coordinate system, East zone, NAD 27.

This description represents a survey made on the ground for a surface easement and intended solely for that purpose. This description does not represent a boundary survey.



WM. J. Daniel III  
Registered Professional Land Surveyor #15078  
C.H. Eastermaker & Associates, LLC  
135 Regency Square  
Lafayette, LA 70508  
337-237-2200

**METES AND BOUNDS DESCRIPTION OF  
A CALLED 0.92 ACRE COMPRESSOR PAD  
SECTION 19, T26S-R33E  
LEA COUNTY, NEW MEXICO**

Survey of a proposed 200' x 200' compressor pad on Bureau of Land Management land in Section 19 of Township 26 South Range 33 East, Lea County, New Mexico.

**COMMENCING** at a found 2" iron pipe with cap, located at the Northeast corner of the Northwest quarter of said Section 19 Township 26 South Range 33 East; **thence** South 69 degrees 09 minutes 24 seconds West 1,447.05 feet to the **POINT OF BEGINNING**, said **POINT OF BEGINNING** having the following coordinates: X= 722,523.91, Y= 377,108.00 (New Mexico State Plane coordinate system, East zone, NAD 27).

**Thence** South 00 degrees 25 minutes 43 seconds East 200.00 feet;

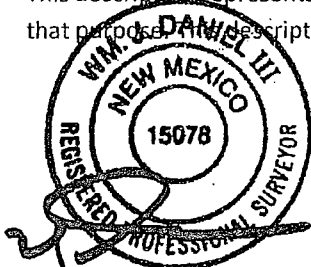
**Thence** South 89 degrees 34 minutes 17 seconds West 200.00 feet;

**Thence** North 00 degrees 25 minutes 43 seconds West 200.00 feet;

**Thence** North 89 degrees 34 minutes 17 seconds East 200.00 feet to the **POINT OF BEGINNING**.

The bearings recited hereon are oriented to New Mexico State Plane coordinate system, East zone, NAD 27.

This description represents a survey made on the ground for a surface easement and intended solely for that purpose. This description does not represent a boundary survey.



Wm. J. Daniel III  
Registered Professional Land Surveyor #15078  
C.H. Fenstermaker & Associates, LLC  
135 Regency Square  
Lafayette, LA 70508  
337-237-2200

**NOTE:**

Please be advised, that while reasonable efforts are made to locate and verify pipelines and anomalies using our standard pipeline locating equipment, it is impossible to be 100 % effective. As such, we advise using caution when performing work as there is a possibility that pipelines and other hazards, such as fiber optic cables, PVC pipelines, etc. may exist undetected on site.

**NOTE:**

Many states maintain information centers that establish links between those who dig (excavators) and those who own and operate underground facilities (operators). It is advisable and in most states, law, for the contractor to contact the center for assistance in locating and marking underground utilities. For guidance: New Mexico One Call - [www.nmonecall.org](http://www.nmonecall.org)

**DISCLAIMER:** At this time, C.H. Fenstermaker & Associates, LLC has not performed nor was asked to perform any type of engineering, hydrological modeling, flood plain, or "No Rise" certification analyses, including but not limited to determining whether the project will impact flood hazards in connection with federal/FEMA, state, and/or local laws, ordinances and regulations. Accordingly, Fenstermaker makes no warranty or representation of any kind as to the foregoing issues, and persons or entities using this information shall do so at their own risk.

FOR THE EXCLUSIVE USE OF  
CHEVRON U.S.A. INC.

I, WM. J. Daniel III, Registered Professional  
Land Surveyor, do hereby state this plat is true  
and correct to the best of my knowledge.



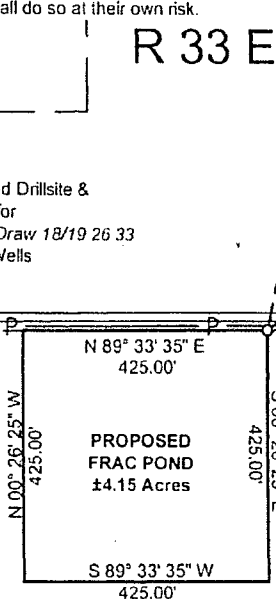
WM. J. Daniel III  
Registration No. 15078

LEGEND	
	Proposed Electric Line
	Proposed Right of Way
	Found Occupation
	Section Break
	Existing Pipeline

Proposed Drillsite &  
Access for  
Salado Draw 18/19 26 33  
3H-4H Wells

Proposed  
Electric Line &  
R-O-W

Sec. 19  
Bureau of Land Management  
NE NW



**METES AND BOUNDS DESCRIPTION OF  
A CALLED 4.15 ACRE PROPOSED FRAC POND  
SECTION 19, T26S-R33E  
LEA COUNTY, NEW MEXICO**

SURVEY OF A PROPOSED 425' X 425' FRAC POND ON BUREAU OF LAND MANAGEMENT LAND IN SECTION 19 OF TOWNSHIP 26 SOUTH RANGE 33 EAST, LEA COUNTY, NEW MEXICO.

COMMENCING AT A FOUND 2" IRON PIPE WITH CAP, LOCATED AT THE NORTHEAST CORNER OF THE NORTHWEST QUARTER OF SAID SECTION 19 TOWNSHIP 26 SOUTH RANGE 33 EAST, THENCE SOUTH 12 DEGREES 14 MINUTES 46 SECONDS WEST 795.04 FEET TO THE POINT OF BEGINNING, SAID POINT OF BEGINNING HAVING THE FOLLOWING COORDINATES:  
X= 723,707.41, Y= 376,844.95 (NEW MEXICO STATE PLANE COORDINATE SYSTEM, EAST ZONE, NAD 27).

THENCE SOUTH 60 DEGREES 26 MINUTES 25 SECONDS EAST 425.00 FEET;

THENCE SOUTH 89 DEGREES 33 MINUTES 35 SECONDS WEST 425.00 FEET;

THENCE NORTH 60 DEGREES 26 MINUTES 25 SECONDS WEST 425.00 FEET;

THENCE NORTH 89 DEGREES 33 MINUTES 35 SECONDS EAST 425.00 FEET TO THE POINT OF BEGINNING.

THE BEARINGS RECITED HEREON ARE ORIENTED TO NEW MEXICO STATE PLANE COORDINATE SYSTEM, EAST ZONE, NAD 27. THIS DESCRIPTION REPRESENTS A SURVEY MADE ON THE GROUND FOR A SURFACE EASEMENT AND INTENDED SOLELY FOR THAT PURPOSE. THIS DESCRIPTION DOES NOT REPRESENT A BOUNDARY SURVEY.

NW FRAC POND CORNER	NE FRAC POND CORNER
X= 723,282 NAD 27	X= 723,707 NAD 27
Y= 376,842	Y= 376,845
ELEVATION +3189' NAVD 88	ELEVATION +3194' NAVD 88
SE FRAC POND CORNER	SW FRAC POND CORNER
X= 723,711 NAD 27	X= 723,286 NAD 27
Y= 376,420	Y= 376,417
ELEVATION +3192' NAVD 88	ELEVATION +3186' NAVD 88

**SURFACE USE PLAT**

Scale: 1"=300'

300' 0 150' 300'

**CHEVRON U.S.A. INC.**

PROPOSED FRAC POND

SALADO DRAW 18 & 19 26 33 FED NO. 1H-4H WELLS

SECTION 19, T26S-R33E

LEA COUNTY, NEW MEXICO



135 Regency Sq. Lafayette, LA 70508  
Ph. 337-237-2200 Fax. 337-232-3299  
[www.fenstermaker.com](http://www.fenstermaker.com)

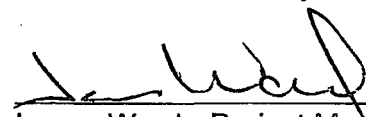
DRAWN BY: BMO		REVISIONS	
PROJ. MGR.: VHV	No. 1	DATE: 05/27/2014	REVISED BY: VHV
DATE: MAY 08, 2014	No.	DATE:	REVISED BY:
FILENAME: T:\2014\12144669\DWG\Salado Draw 18 & 19 26 33 1H-4H_Frac Pond_SUP.dwg			

### CERTIFICATION

I hereby certify that I, or someone under my direct supervision, have inspected the drill site and access route proposed herein; that I am familiar with the conditions which currently exist; that I have full knowledge of state and Federal laws applicable to this operation; that the statements made in this APD package are, to the best of my knowledge, true and correct; and, that the work associated with the operations proposed will be performed in conformity with this APD package and the terms and conditions under which it is approved. I also certify that I, or the company I represent, am responsible for the operations conducted under this application. These statements are subject to the provisions of 18 U.S.C. 1001 for the filing of a false statement.

Executed this 5<sup>TH</sup> day of MAY, 2014.

Name:



James Ward - Project Manager

Address: 1400 Smith Street, 40050  
Houston, TX 77002

Office 713-372-1748

E-mail: jwgb@chevron.com