

DISTRICT I
1625 N. French Dr., Hobbs, NM 88240
Phone: (575) 393-6161 Fax: (575) 393-0720
DISTRICT II
811 S. First St., Artesia, NM 88210
Phone: (575) 748-1283 Fax: (575) 748-9720
DISTRICT III
1000 Rio Brazos Road, Aztec, NM 87410
Phone: (505) 334-6178 Fax: (505) 334-6170
DISTRICT IV
1220 S. St. Francis Dr., Santa Fe, NM 87505
Phone: (505) 476-3460 Fax: (505) 476-3462

State of New Mexico
Energy, Minerals & Natural Resources Department
OIL CONSERVATION DIVISION
1220 South St. Francis Dr.
Santa Fe, New Mexico 87505

HOBBS OCD

Form C-102

Revised August 1, 2011

Submit one copy to appropriate
District Office

NOV 10 2014

RECEIVED

AMENDED REPORT

WELL LOCATION AND ACREAGE DEDICATION PLAT

API Number 30-041-20962	Pool Code 98103	Pool Name WC-041 50634 J; PEN GAS
Property Code 37814	Property Name MAYBELLENE	Well Number 1
OGRID No. 001092	Operator Name ARMSTRONG ENERGY CORPORATION	Elevation 4340'

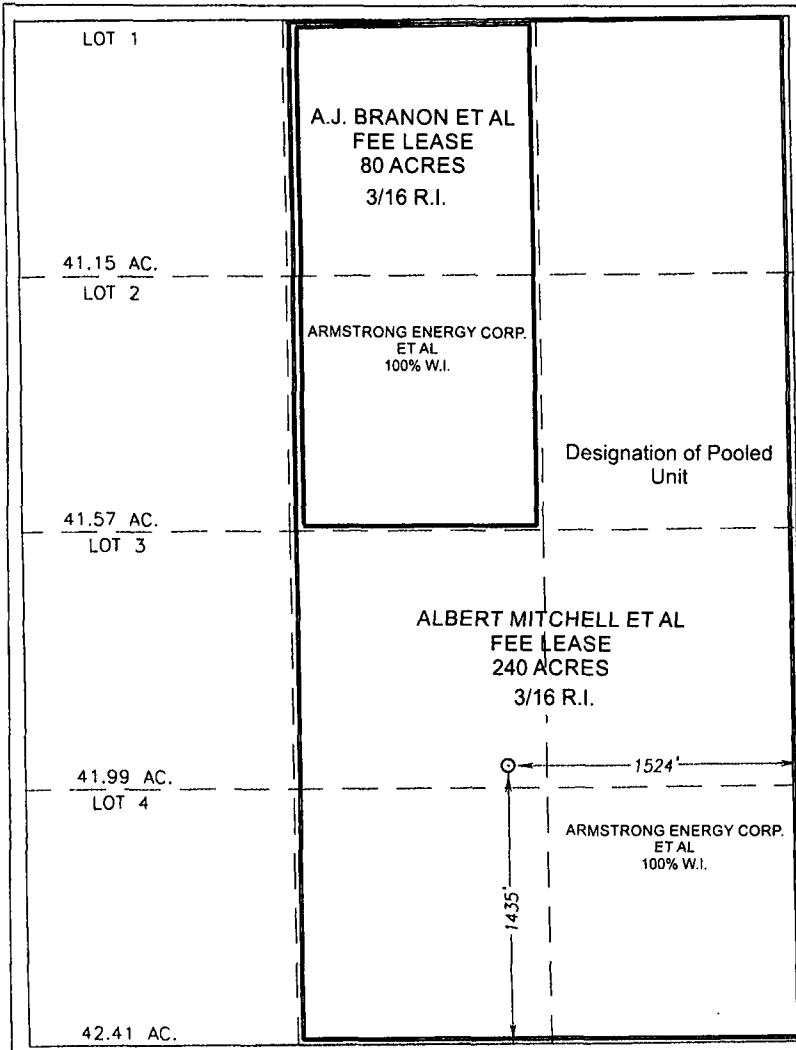
Surface Location

UL or lot No.	Section	Township	Range	Lot Idn	Feet from the	North/South line	Feet from the	East/West line	County
J	31	6-S	34-E		1435	SOUTH	1524	EAST	ROOSEVELT

Bottom Hole Location If Different From Surface

UL or lot No.	Section	Township	Range	Lot Idn	Feet from the	North/South line	Feet from the	East/West line	County
Dedicated Acres 320	Joint or Infill N	Consolidation Code O	Order No. NSL7089						

NO ALLOWABLE WILL BE ASSIGNED TO THIS COMPLETION UNTIL ALL INTERESTS HAVE BEEN CONSOLIDATED OR A NON-STANDARD UNIT HAS BEEN APPROVED BY THE DIVISION



GEODETIC COORDINATES
NAD 27 NME

SURFACE LOCATION
Y=1000935.1 N
X=753127.1 E

LAT.=33.748688° N
LONG.=103.500602° W

GEODETIC COORDINATES
NAD 83 NME

SURFACE LOCATION
Y=1000999.4 N
X=794303.3 E

LAT.=33.748780° N
LONG.=103.501113° W

OPERATOR CERTIFICATION

I hereby certify that the information herein is true and complete to the best of my knowledge and belief, and that this organization either owns a working interest or unleased mineral interest in the land including the proposed bottom hole location or has a right to drill this well at this location pursuant to a contract with an owner of such mineral or working interest, or to a voluntary pooling agreement or a compulsory pooling order heretofore entered by the division.

B. Stubbs
Signature

11-6-2014

Date

BRUCE A. STUBBS

Printed Name

bastubbs@armstrongenergycorp.com

E-mail Address

SURVEYOR CERTIFICATION

I hereby certify that the well location shown on this plat was plotted from field notes of actual surveys made by me or under my supervision, and that the same is true and correct to the best of my belief.

MARCH 28, 2014

Date of Survey

Signature & Seal of Professional Surveyor:



Certificate Number Gary G. Eidson 12641

RONALD J. EIDSON 3239

ACK REV 4/16/14 JWSC W.O.: 14.11.0304

NOV 24 2014