

DISTRICT I
1625 N. French Dr., Hobbs, NM 88240
Phone: (575) 393-6161 Fax: (575) 393-0720
DISTRICT II
811 S. First St., Artesia, NM 88210
Phone: (575) 748-1283 Fax: (575) 748-9720
DISTRICT III
1000 Rjo Brazos Rd., Aztec, NM 87410
Phone: (505) 334-6178 Fax: (505) 334-6170
DISTRICT IV
1220 S. St. Francis Dr., Santa Fe, NM 87505
Phone: (505) 476-3460 Fax: (505) 476-3462

State of New Mexico
Energy, Minerals & Natural Resources Department
OIL CONSERVATION DIVISION **HOBBS OCD**
1220 South St. Francis Dr.
Santa Fe, New Mexico 87505

Form C-102
Revised August 1, 2011
Submit one copy to appropriate
District Office

NOV 25 2014

☐ AMENDED REPORT

WELL LOCATION AND ACREAGE DEDICATION PLAT

API Number 30-025-42288	Pool Code 96553	RECEIVED Ojo Chiso Bone Spring
Property Code 313906	Property Name PERRO LOCO 22 B30B FEDERAL	Well Number 1H
OGRID No. 14744	Operator Name MEWBOURNE OIL COMPANY	Elevation 3419'

Surface Location

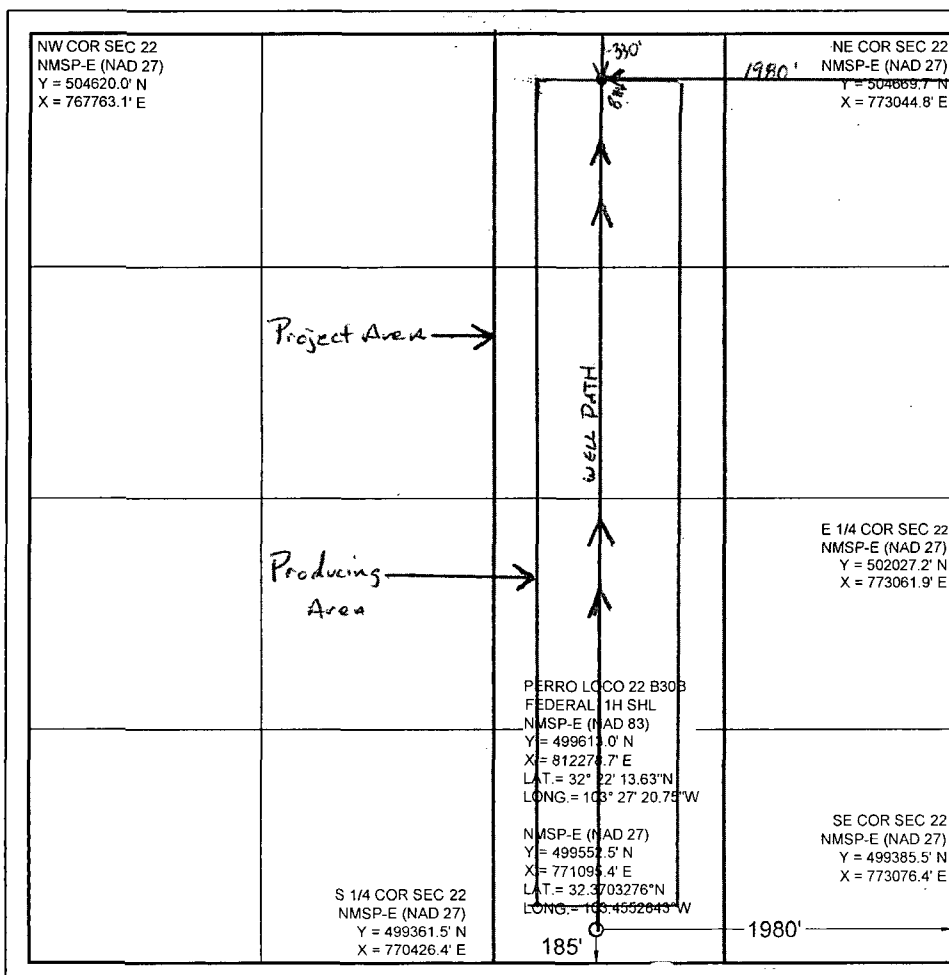
UL or lot no.	Section	Township	Range	Lot Idn	Feet from the	North/South line	Feet from the	East/West line	County
O	22	22 S	34 E		185	SOUTH	1980	EAST	LEA

Bottom Hole Location If Different From Surface

UL or lot no.	Section	Township	Range	Lot Idn	Feet from the	North/South line	Feet from the	East/West line	County
B	22	22 S	34 E		330	NORTH	1980	EAST	LEA

Dedicated Acres	Joint or Infill	Consolidated Code	Order No.
160			

No allowable will be assigned to this completion until all interests have been consolidated or a non-standard unit has been approved by the division.



OPERATOR CERTIFICATION

I hereby certify that the information contained herein is true and complete to the best of my knowledge and belief, and that this organization either owns a working interest or unleased mineral interest in the land including the proposed bottom hole location or has a right to drill this well at this location pursuant to a contract with an owner of such a mineral or working interest, or to voluntary pooling agreement or a compulsory pooling order heretofore entered by the division.

Bradley Bishop 5-5-14
Signature Date

BRADLEY BISHOP
Print Name

E-mail Address

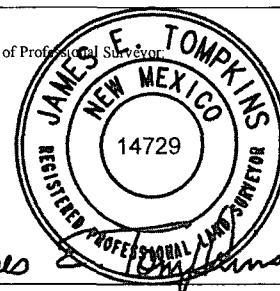
SURVEYORS CERTIFICATION

I hereby certify that the well location shown on this plat was plotted from field notes of actual surveys made by me or under my supervision, and that the same is true and correct to the best of my belief.

MAY 1, 2014

Date of Survey

Signature and Seal of Professional Surveyor



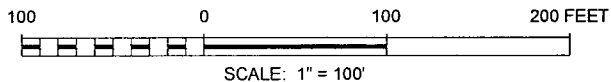
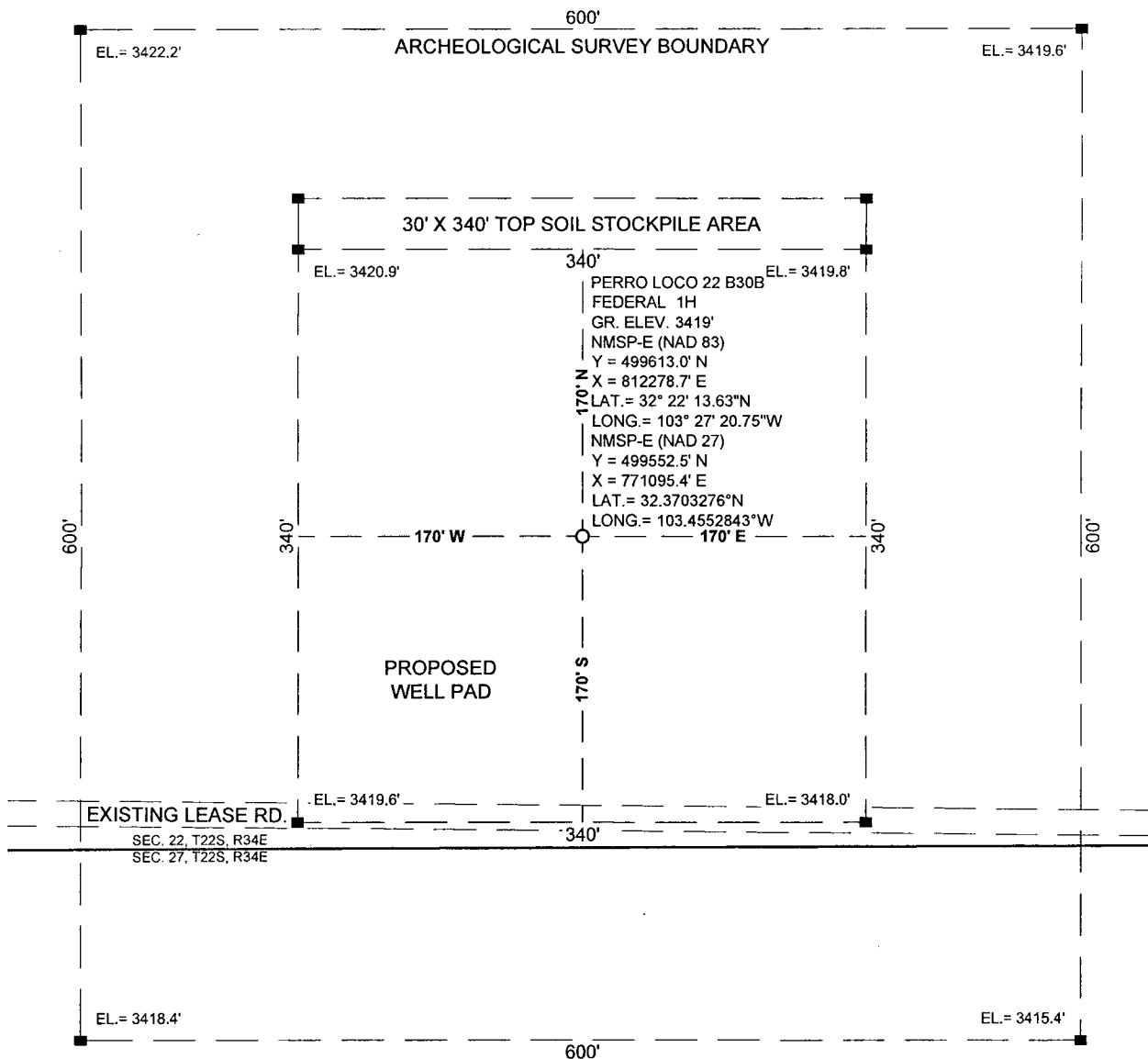
Job No.: WTC49889

JAMES E. TOMPKINS 14729

Certificate Number

DEC 01 2014

SITE LOCATION



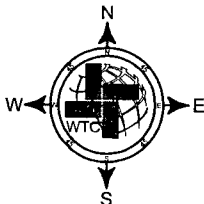
SECTION 22, T 22 S, R 34 E, N.M.P.M.

COUNTY: LEA STATE: NM

DESCRIPTION: 185' FSL & 1980' FEL

OPERATOR: MEWBOURNE OIL COMPANY

WELL NAME: PERRO LOCO 22 B30B FEDERAL 1H



DRIVING DIRECTIONS:

From intersection of County Road 21 (Delaware Basin Road) and County Road 32 (San Simon Road). Go North 3.5 miles on County Road 32 (San Simon Road) to a lease road west. Go West 1.0 mile on lease road. The location flag is to the North approximately 170 feet.



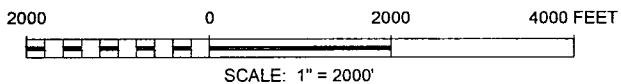
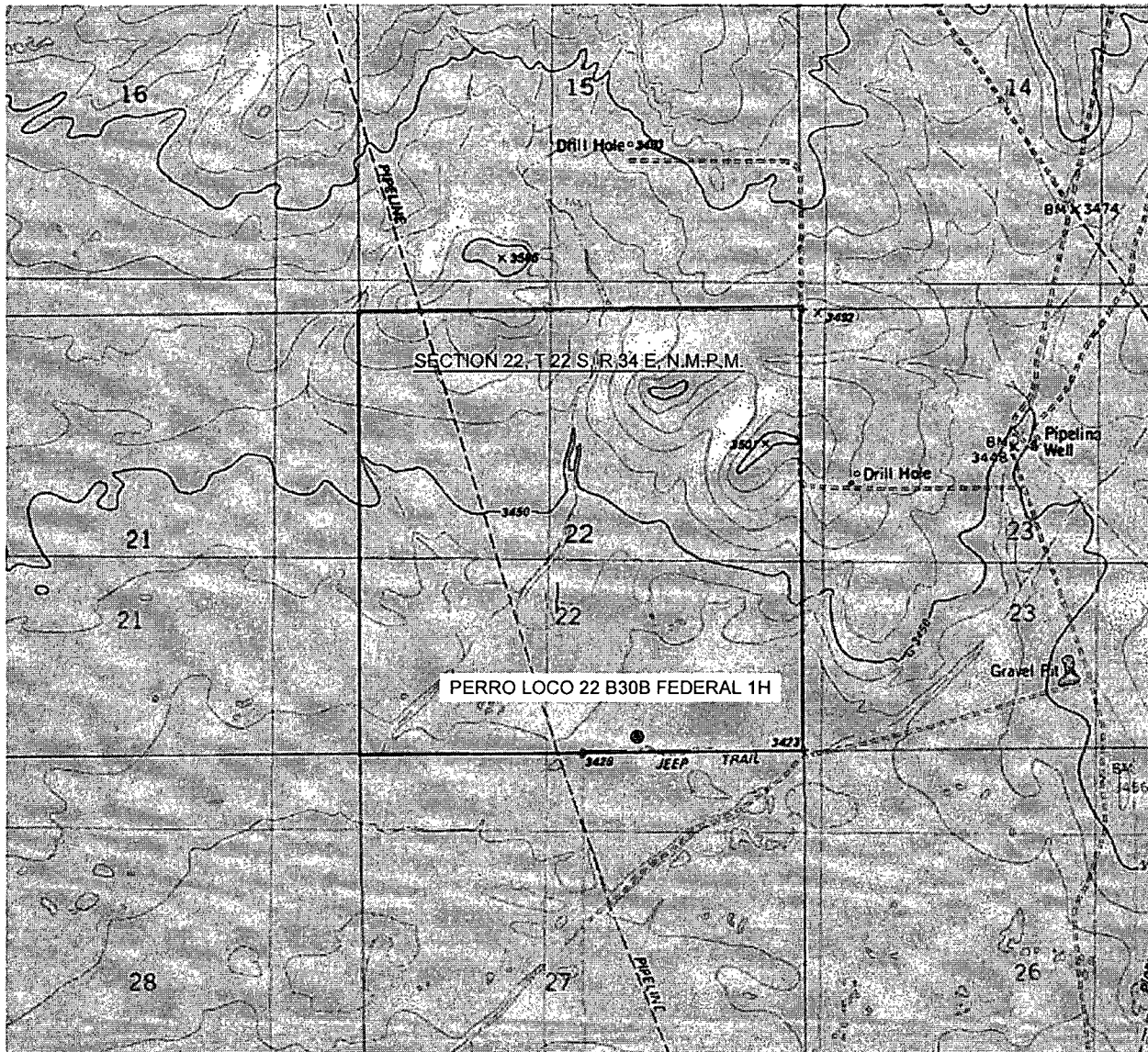
W T C, INC.
 405 S.W. 1st Street
 Andrews, TX 79714
 (432) 523-2181

MEWBOURNE OIL COMPANY

JOB No.: WTC49889

3A

LOCATION VERIFICATION MAP



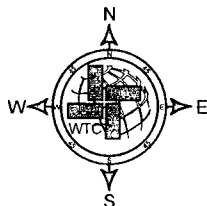
SECTION 22, T 22 S, R 34 E, N.M.P.M.

COUNTY: LEA STATE: NM

DESCRIPTION: 185' FSL & 1980' FEL

OPERATOR: MEWBOURNE OIL COMPANY

WELL NAME: PERRO LOCO 22 B30B FEDERAL 1H



DRIVING DIRECTIONS:

From intersection of County Road 21 (Delaware Basin Road) and County Road 32 (San Simon Road). Go North 3.5 miles on County Road 32 (San Simon Road) to a lease road west. Go West 1.0 mile on lease road. The location flag is to the North approximately 170 feet.

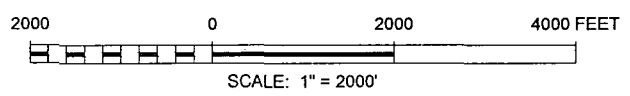
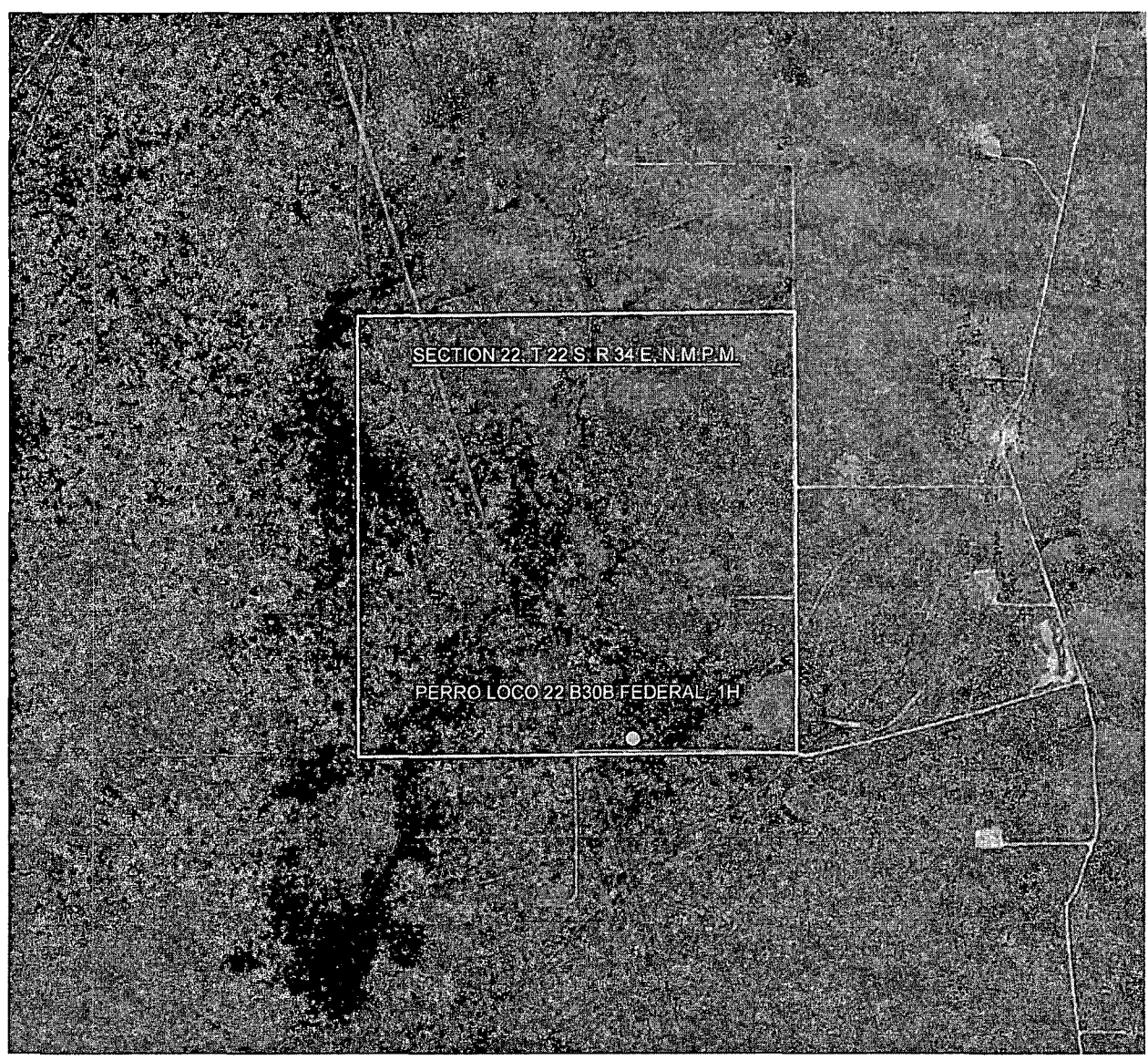


W T C, INC.
405 S.W. 1st Street
Andrews, TX 79714
(432) 523-2181

MEWBOURNE OIL COMPANY

JOB No.: WTC49889

AERIAL MAP



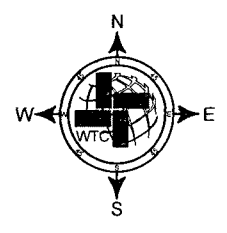
SECTION 22, T 22 S, R 34 E, N.M.P.M.

COUNTY: LEA STATE: NM

DESCRIPTION: 185' FSL & 1980' FEL

OPERATOR: MEWBOURNE OIL COMPANY

WELL NAME: PERRO LOCO 22 B30B FEDERAL 1H



DRIVING DIRECTIONS:

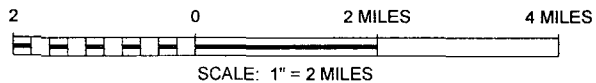
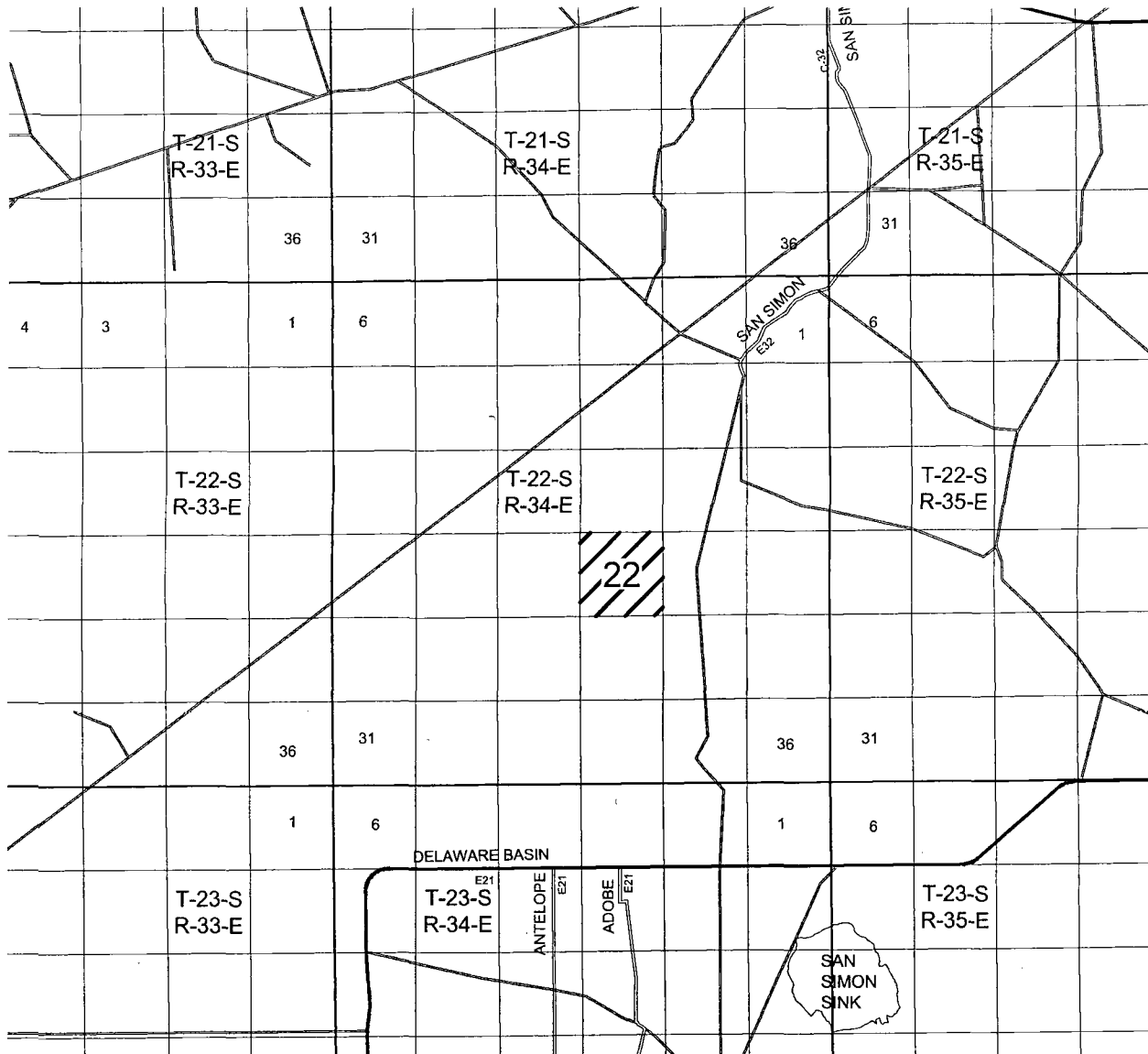
From intersection of County Road 21 (Delaware Basin Road) and County Road 32 (San Simon Road). Go North 3.5 miles on County Road 32 (San Simon Road) to a lease road west. Go West 1.0 mile on lease road. The location flag is to the North approximately 170 feet.



W T C, INC.
405 S.W. 1st Street
Andrews, TX 79714
(432) 523-2181

MEWBOURNE OIL COMPANY

VICINITY MAP



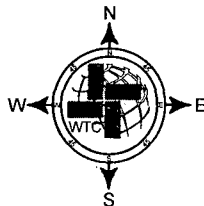
SECTION 22, T 22 S, R 34 E, N.M.P.M.

COUNTY: LEA STATE: NM

DESCRIPTION: 185' FSL & 1980' FEL

OPERATOR: MEWBOURNE OIL COMPANY

WELL NAME: PERRO LOCO 22 B30B FEDERAL 1H



DRIVING DIRECTIONS:

From intersection of County Road 21 (Delaware Basin Road) and County Road 32 (San Simon Road). Go North 3.5 miles on County Road 32 (San Simon Road) to a lease road west. Go West 1.0 mile on lease road. The location flag is to the North approximately 170 feet.

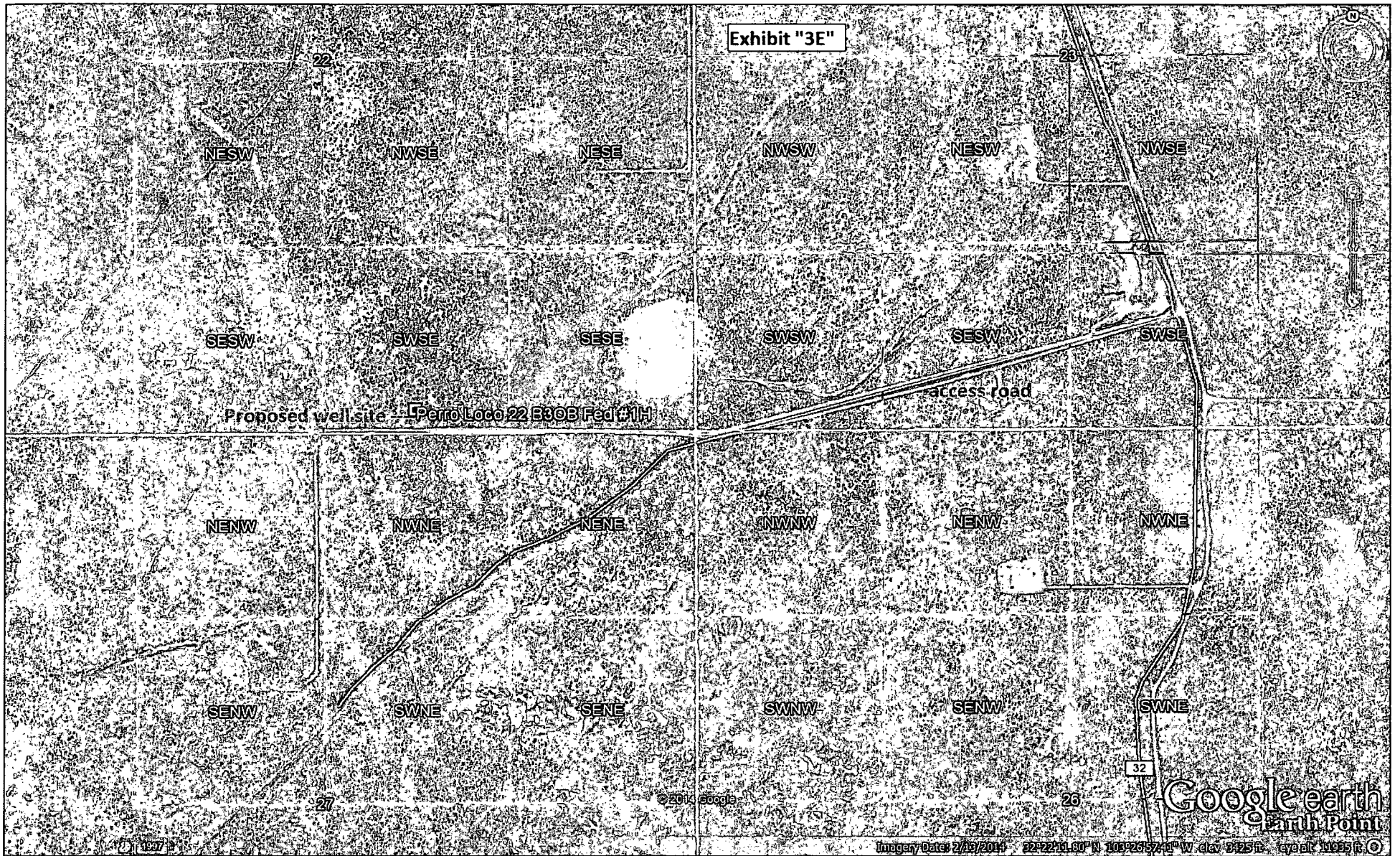


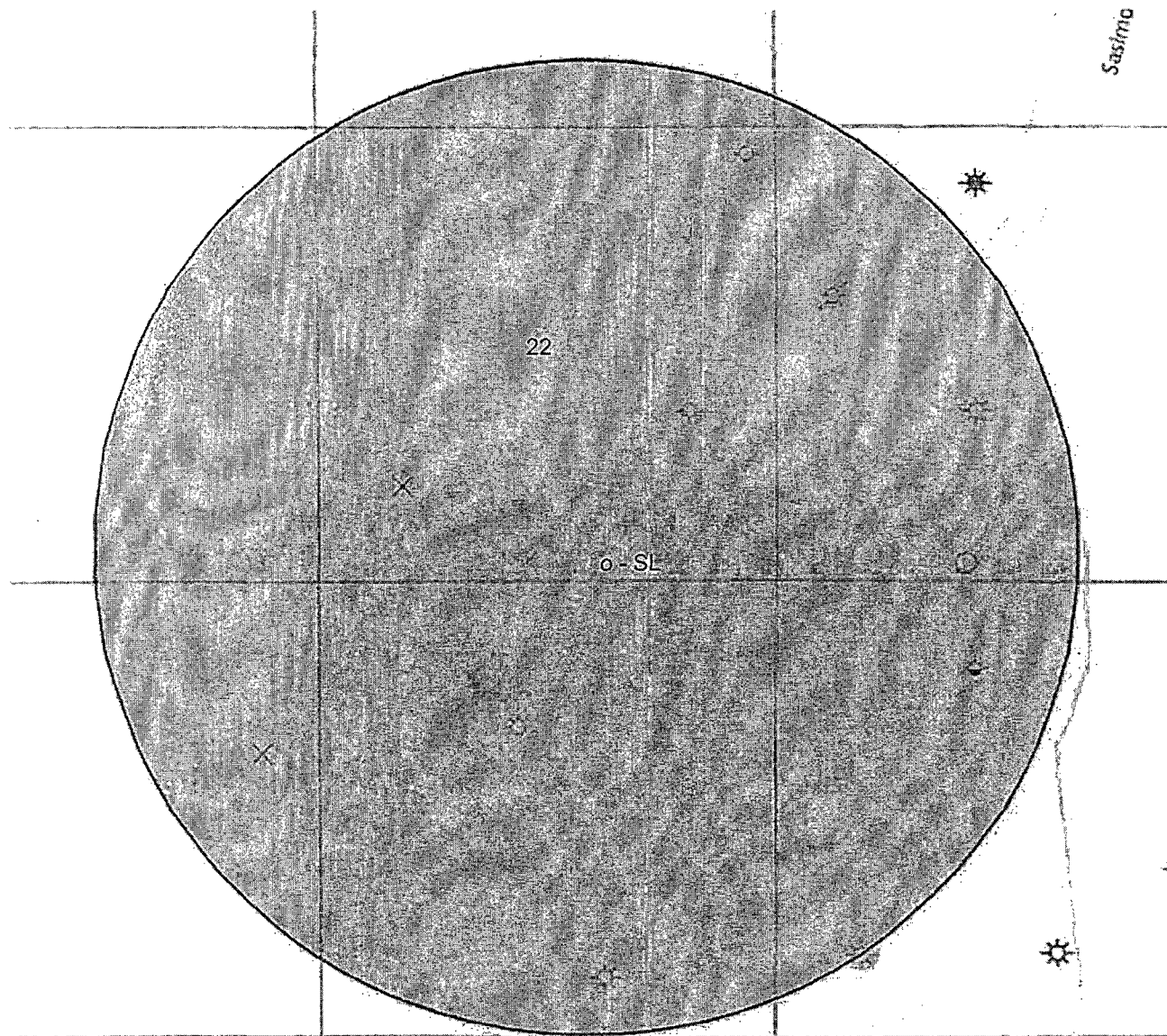
W T C, INC.

405 S.W. 1st Street
Andrews, TX 79714
(432) 523-2181

MEWBOURNE OIL COMPANY

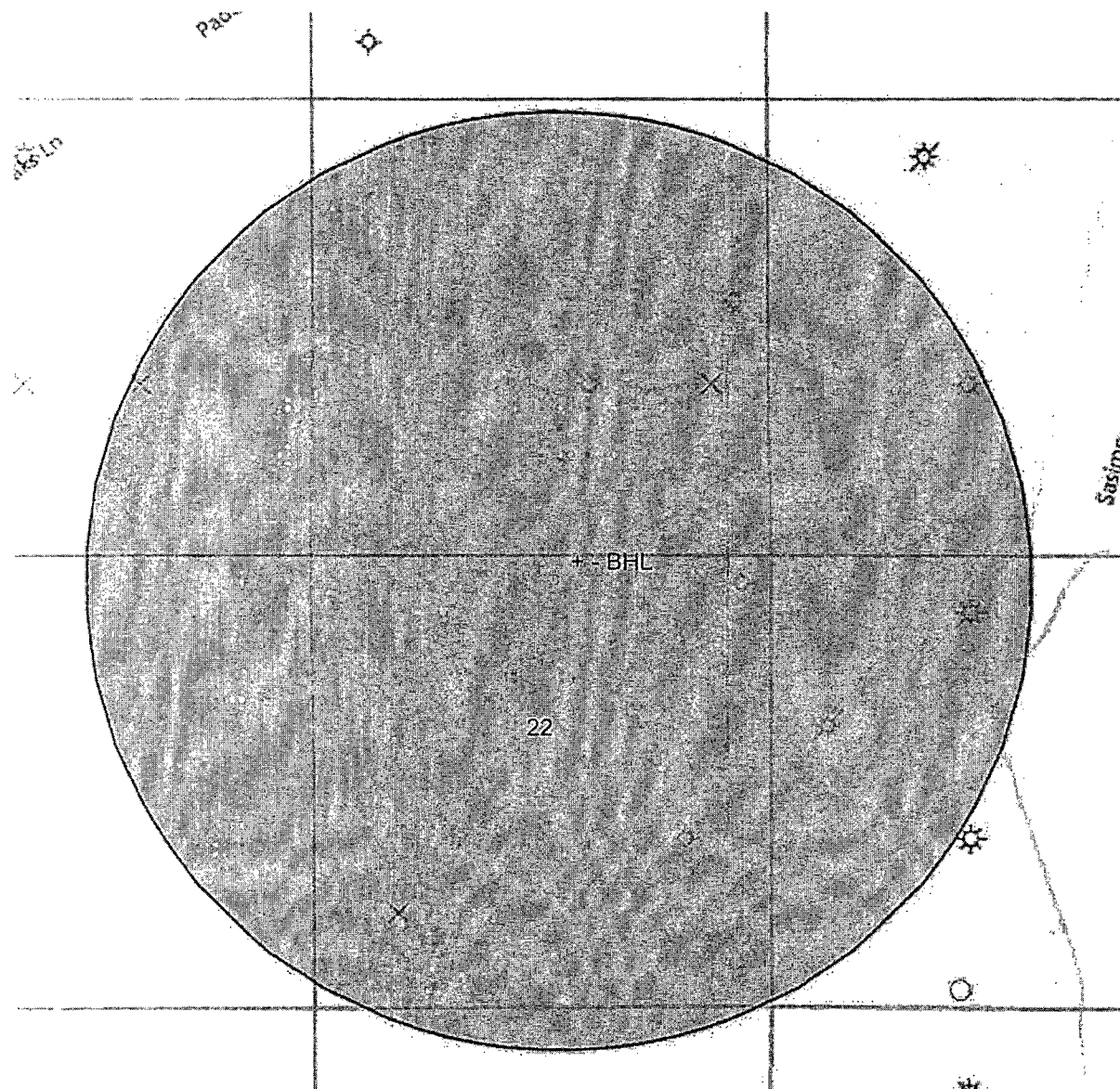
JOB No.: WTC49889





- Drilling (Well Start)
- × Abandoned Location (Permit)
- ⊗ Gas Well
- Oil Well
- ⊗ Oil and Gas Well
- Other (Observation, etc)
- ⊗ Injection Well
- Suspended
- ⊗ Plugged Gas Well
- ⊗ Plugged Oil Well
- ⊗ Plugged Oil and Gas
- ⊗ Dry Hole (No Shows)
- ⊗ Dry Hole w/Gas Show
- ⊗ Dry Hole w/Oil Show
- ⊗ Dry Hole w/Oil and Gas Show

Perro Loco 22 B3OB Federal #1H - SL - 185' FSL & 1980' FEL, Sec. 22 T22S R34E, Lea Co. NM



- Drilling (Well Start)
- × Abandoned Location (Permit)
- ⊛ Gas Well
- Oil Well
- ⊛ Oil and Gas Well
- Other (Observation, etc)
- ⊛ Injection Well
- Suspended
- ⊛ Plugged Gas Well
- ⊛ Plugged Oil Well
- ⊛ Plugged Oil and Gas
- ⊛ Dry Hole (No Show)
- ⊛ Dry Hole w/Gas Show
- ⊛ Dry Hole w/Oil Show
- ⊛ Dry Hole w/Oil and Gas Show

Perro Loco 22 B3OB Federal #1H - BHL - 330' FNL & 1980' FEL, Sec. 22 T22S R34E, Lea Co. NM