

HOBBS OCD

DEC 01 2014

District I  
1625 N. French Dr., Hobbs, NM 88240  
Phone: (575) 393-6161 Fax: (575) 393-0720  
District II  
811 S. First St., Artesia, NM 88210  
Phone: (575) 748-1283 Fax: (575) 748-9720  
District III  
1000 Rio Brazos Road, Aztec, NM 87410  
Phone: (505) 334-6178 Fax: (505) 334-6170  
District IV  
1220 S. St. Francis Dr., Santa Fe, NM 87505  
Phone: (505) 476-3460 Fax: (505) 476-3462

State of New Mexico  
Energy, Minerals & Natural Resources Department  
OIL CONSERVATION DIVISION  
1220 South St. Francis Dr.  
Santa Fe, NM 87505

Form C-102

Revised August 1, 2011

Submit one copy to appropriate

District Office

☐ AMENDED REPORT

## WELL LOCATION AND ACREAGE DEDICATION PLAT

<sup>1</sup> API Number 30-025-42277	<sup>2</sup> Pool Code 96193 96724	<sup>3</sup> Pool Name Cruz Briminstool; Delaware Northeast
<sup>4</sup> Property Code 39429	<sup>5</sup> Property Name TAIPAN 10 STATE COM	<sup>6</sup> Well Number 8H
<sup>7</sup> OGRID No. 6137	<sup>8</sup> Operator Name DEVON ENERGY PRODUCTION COMPANY, L.P.	<sup>9</sup> Elevation 3704.3

<sup>10</sup> Surface Location

UL or lot no.	Section	Township	Range	Lot Idn	Feet from the	North/South line	Feet from the	East/West line	County
D	15	23 S	33 E		240	NORTH	1205	WEST	LEA

<sup>11</sup> Bottom Hole Location If Different From Surface

UL or lot no.	Section	Township	Range	Lot Idn	Feet from the	North/South line	Feet from the	East/West line	County
D	10	23 S	33 E		330	NORTH	932	WEST	LEA

<sup>12</sup> Dedicated Acres	<sup>13</sup> Joint or Infill	<sup>14</sup> Consolidation Code	<sup>15</sup> Order No.
160 ac			

No allowable will be assigned to this completion until all interests have been consolidated or a non-standard unit has been approved by the division.

<p>NW CORNER SEC. 10 LAT. = 32.3265058°N LONG. = 103.5687966°W NMSP EAST (FT) N = 483357.54 E = 777494.11</p> <p>W/4 CORNER SEC. 10 SCALED</p> <p>SECTION CORNER LAT. = 32.3119919°N LONG. = 103.5687843°W NMSP EAST (FT) N = 478077.43 E = 777535.58</p> <p>W/4 CORNER SEC. 15 LAT. = 32.3047319°N LONG. = 103.5687767°W NMSP EAST (FT) N = 477556.76 E = 777580.98</p> <p>SW CORNER SEC. 15 LAT. = 32.2974757°N LONG. = 103.5687592°W NMSP EAST (FT) N = 472796.48 E = 777580.98</p>		<p>932'</p> <p>330'</p> <p>240'</p> <p>1205'</p> <p>TAIPAN 10 STATE COM 8H ELEV. = 3704.3' LAT. = 32.3113311°N (NAD83) LONG. = 103.5648841°W NMSP EAST (FT) N = 477845.65 E = 778742.24</p> <p>NOTE: LATITUDE AND LONGITUDE COORDINATES ARE SHOWN USING THE NORTH AMERICAN DATUM OF 1983 (NAD83). LISTED NEW MEXICO STATE PLANE EAST COORDINATES ARE GRID (NAD83). BASIS OF BEARING AND DISTANCES USED ARE NEW MEXICO STATE PLANE EAST COORDINATES MODIFIED TO THE SURFACE.</p>		<p>N/4 CORNER SEC. 10 SCALED</p> <p>NE CORNER SEC. 10 LAT. = 32.3265050°N LONG. = 103.5516842°W NMSP EAST (FT) N = 483395.41 E = 782780.05</p> <p>E/4 CORNER SEC. 10 LAT. = 32.3192397°N LONG. = 103.5516795°W NMSP EAST (FT) N = 480752.27 E = 782800.78</p> <p>SECTION CORNER LAT. = 32.3119976°N LONG. = 103.5516853°W NMSP EAST (FT) N = 478117.59 E = 782818.20</p> <p>E/4 CORNER SEC. 15 LAT. = SCALED</p> <p>SE CORNER SEC. 15 LAT. = 32.2974530°N LONG. = 103.5516745°W NMSP EAST (FT) N = 472826.30 E = 782860.12</p>	
--	--	---	--	--	--

**<sup>17</sup> OPERATOR CERTIFICATION**

I hereby certify that the information contained herein is true and complete to the best of my knowledge and belief, and that this organization either owns a working interest or unleased mineral interest in the land including the proposed bottom hole location or has a right to drill this well at this location pursuant to a contract with an owner of such a mineral or working interest, or to a voluntary pooling agreement or a compulsory pooling order heretofore entered by the division.

Signature: Tami Laird Date: 11/19/14

Tami Laird, Regulatory Analyst

Printed Name: tami.laird@dmn.com

E-mail Address: tami.laird@dmn.com

**<sup>18</sup> SURVEYOR CERTIFICATION**

I hereby certify that the well location shown on this plat was plotted from field notes of actual surveys made by me or under my supervision, and that the same is true and correct to the best of my belief.

OCTOBER 7 2014 NEW MEXICO

Date of Survey: 11/27/14

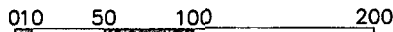
Signature and Seal of Professional Surveyor: [Signature]

Certificate Number: 12797 SURVEY NO. 3363

Project Area: ☐

DEC 03 2014

NOTE: LATITUDE AND LONGITUDE COORDINATES ARE SHOWN USING THE NORTH AMERICAN DATUM OF 1983 (NAD83). LISTED NEW MEXICO STATE PLANE EAST COORDINATES ARE GRID (NAD83). BASIS OF BEARING AND DISTANCES USED ARE NEW MEXICO STATE PLANE EAST COORDINATES MODIFIED TO THE SURFACE.



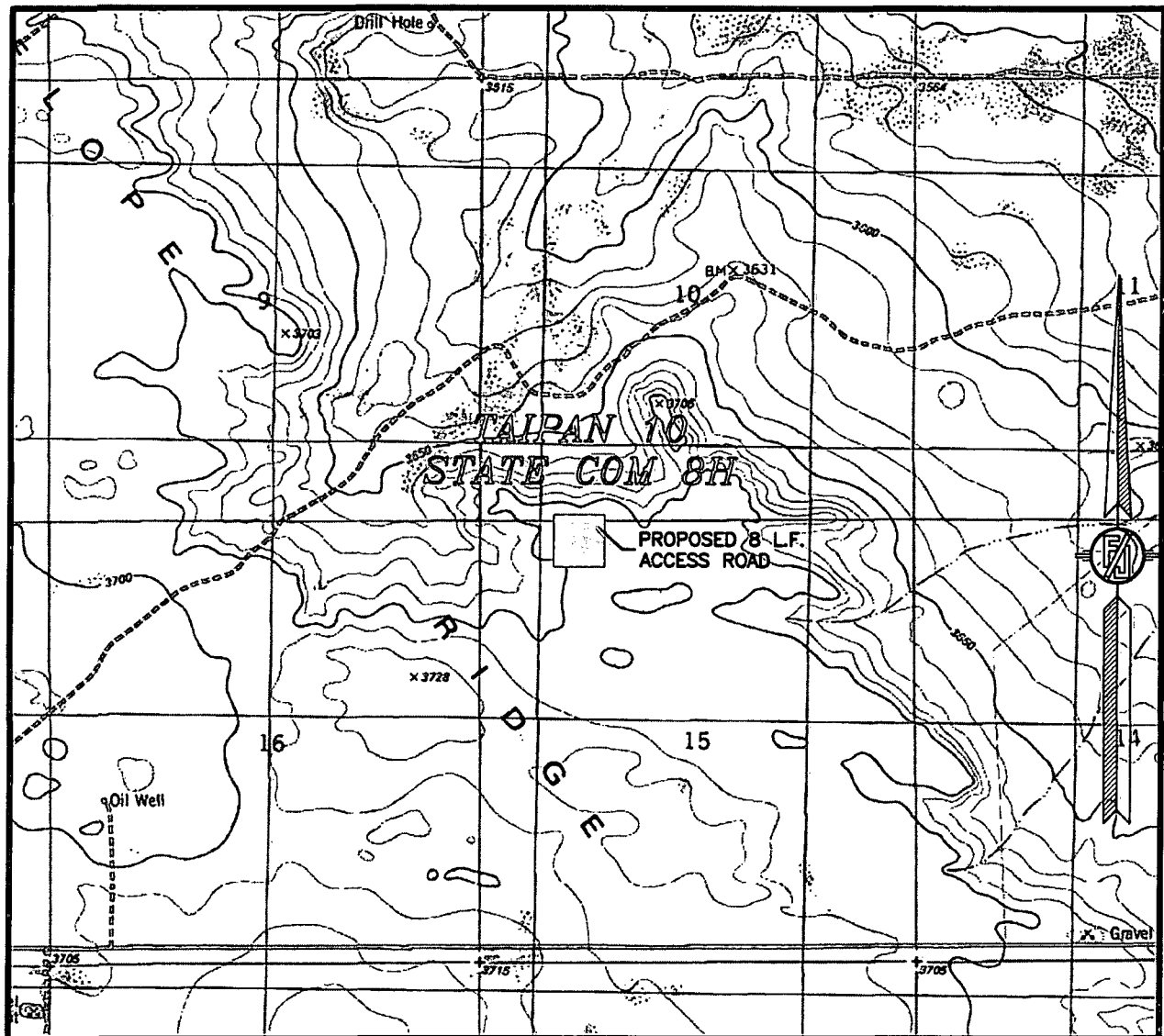
FROM THE INTERSECTION OF NM HWY 128 AND DELAWARE BASIN ROAD GO NORTH ON DELAWARE BASIN ROAD 6.02 MILES TO CALICHE LEASE ROAD ON LEFT GO WEST ON CALICHE LEASE ROAD 2.40 MILES TO ROAD INTERSECTION TURN RIGHT GO NORTH 1.0 MILES TO CALICHE LEASE ROAD ACROSS FROM FRAC POND TURN LEFT GO WEST 0.71 MILES TO NORTHEAST CORNER OF PROPOSED PAD ON LEFT SOUTH OF ROAD

OCTOBER 7, 2014

**SURVEY NO. 3363**

**MADRON SURVEYING, INC.** 301 SOUTH CANAL CARLSBAD, NEW MEXICO  
(575) 234-3341

SECTION 15, TOWNSHIP 23 SOUTH, RANGE 33 EAST, N.M.P.M.  
LEA COUNTY, STATE OF NEW MEXICO  
LOCATION VERIFICATION MAP



USGS QUAD MAP:  
TIP TOP WELLS

NOT TO SCALE

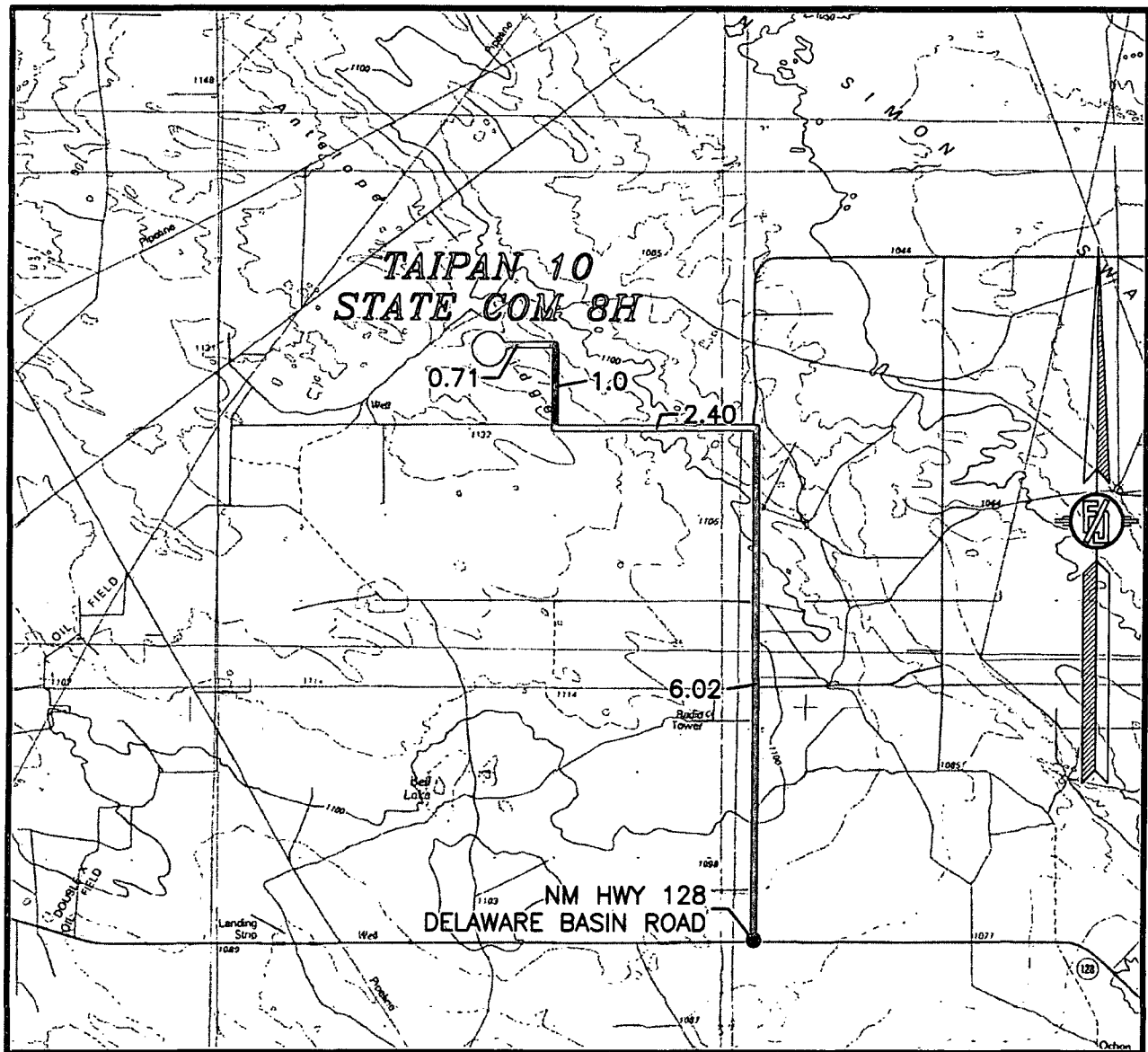
DEVON ENERGY PRODUCTION COMPANY, L.P.  
TAIPAN 10 STATE COM 8H  
LOCATED 240 FT. FROM THE NORTH LINE  
AND 1205 FT. FROM THE WEST LINE OF  
SECTION 15, TOWNSHIP 23 SOUTH,  
RANGE 33 EAST, N.M.P.M.  
LEA COUNTY, STATE OF NEW MEXICO

OCTOBER 7, 2014

SURVEY NO. 3363

MADRON SURVEYING, INC. 301 SOUTH CANAL (575) 234-3341 CARLSBAD, NEW MEXICO

SECTION 15, TOWNSHIP 23 SOUTH, RANGE 33 EAST, N.M.P.M.  
LEA COUNTY, STATE OF NEW MEXICO  
VICINITY MAP



DISTANCES IN MILES

NOT TO SCALE

**DIRECTIONS TO LOCATION**

FROM THE INTERSECTION OF NM HWY 128 AND DELAWARE BASIN ROAD GO NORTH ON DELAWARE BASIN ROAD 6.02 MILES TO CALICHE LEASE ROAD ON LEFT GO WEST ON CALICHE LEASE ROAD 2.40 MILES TO ROAD INTERSECTION TURN RIGHT GO NORTH 1.0 MILES TO CALICHE LEASE ROAD ACROSS FROM FRAC POND TURN LEFT GO WEST 0.71 MILES TO NORTHEAST CORNER OF PROPOSED PAD ON LEFT SOUTH OF ROAD

**DEVON ENERGY PRODUCTION COMPANY, L.P.**  
**TAIPAN 10 STATE COM 8H**

LOCATED 240 FT. FROM THE NORTH LINE  
AND 1205 FT. FROM THE WEST LINE OF  
SECTION 15, TOWNSHIP 23 SOUTH,  
RANGE 33 EAST, N.M.P.M.  
LEA COUNTY, STATE OF NEW MEXICO

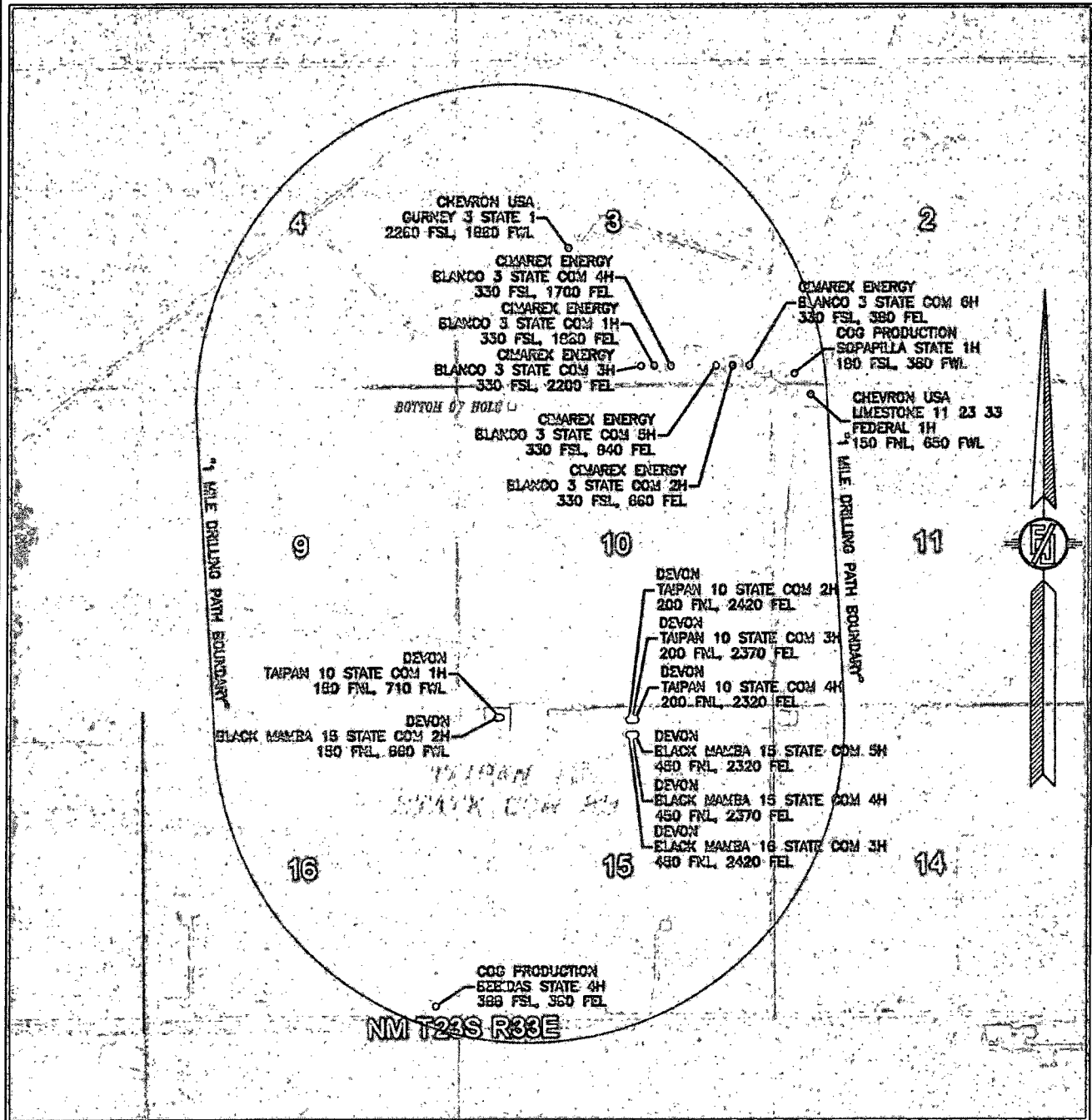
OCTOBER 7, 2014

SURVEY NO. 3363

MADRON SURVEYING, INC. 301 SOUTH CANAL  
(575) 234-3341

CARLSBAD, NEW MEXICO

SECTION 15, TOWNSHIP 23 SOUTH, RANGE 33 EAST, N.M.P.M.  
LEA COUNTY, STATE OF NEW MEXICO  
**AERIAL PHOTO**



**DEVON ENERGY PRODUCTION COMPANY, L.P.**

**TAIPAN 10 STATE COM 8H**

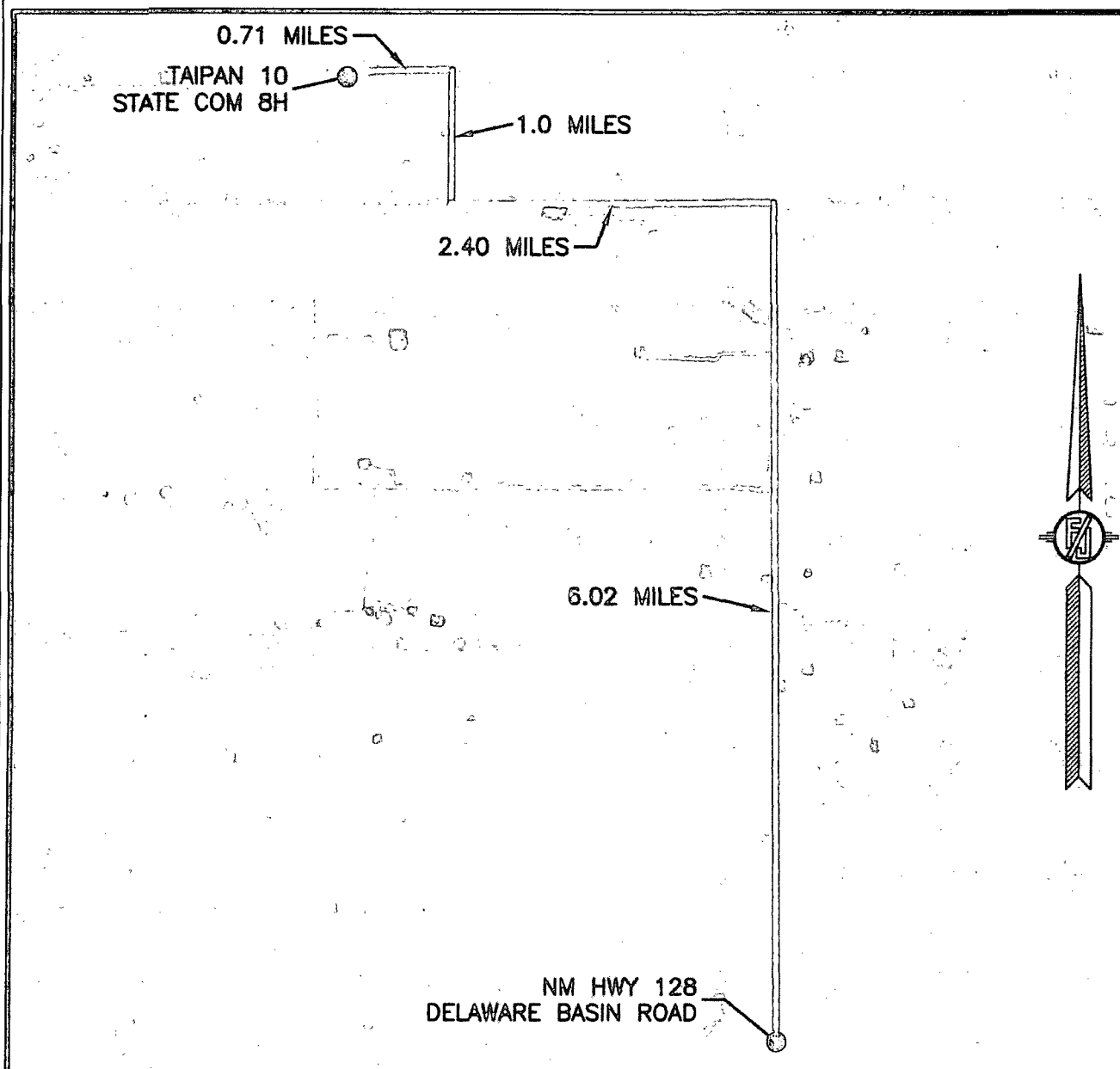
LOCATED 240 FT. FROM THE NORTH LINE  
AND 1205 FT. FROM THE WEST LINE OF  
SECTION 15, TOWNSHIP 23 SOUTH,  
RANGE 33 EAST, N.M.P.M.  
LEA COUNTY, STATE OF NEW MEXICO

OCTOBER 7, 2014

SURVEY NO. 3363

MADRON SURVEYING, INC. 301 SOUTH CANAL (575) 234-3341 CARLSBAD, NEW MEXICO

SECTION 15, TOWNSHIP 23 SOUTH, RANGE 33 EAST, N.M.P.M.  
LEA COUNTY, STATE OF NEW MEXICO  
**AERIAL ACCESS ROUTE MAP**



NOT TO SCALE  
AERIAL PHOTO:  
GOOGLE EARTH  
FEB. 2014

**DEVON ENERGY PRODUCTION COMPANY, L.P.**  
**TAIPAN 10 STATE COM 8H**  
LOCATED 240 FT. FROM THE NORTH LINE  
AND 1205 FT. FROM THE WEST LINE OF  
SECTION 15, TOWNSHIP 23 SOUTH,  
RANGE 33 EAST, N.M.P.M.  
LEA COUNTY, STATE OF NEW MEXICO

OCTOBER 7, 2014

SURVEY NO. 3363

MADRON SURVEYING, INC. 301 SOUTH CANAL (575) 234-3341 CARLSBAD, NEW MEXICO