

District I
1625 N. French Dr., Hobbs, NM 88240
Phone: (575) 393-6161 Fax: (575) 393-0720
District II
811 S. First St., Artesia, NM 88210
Phone: (575) 748-1283 Fax: (575) 748-9720
District III
1000 Rio Brazos Road, Aztec, NM 87410
Phone: (505) 334-6178 Fax: (505) 334-6170
District IV
1220 S. St. Francis Dr., Santa Fe, NM 87505
Phone: (505) 476-3460 Fax: (505) 476-3462

State of New Mexico
Energy, Minerals & Natural Resources Department
OIL CONSERVATION DIVISION
1220 South St. Francis Dr. DEC 03 2014
Santa Fe, NM 87505

Form C-102
Revised August 1, 2011
Submit one copy to appropriate
District Office

☐ AMENDED REPORT

RECEIVED

WELL LOCATION AND ACREAGE DEDICATION PLAT

¹ API Number 30-025 42298	² Pool Code 44500	³ Pool Name Maljamar; Yeso West
⁴ Property Code 38653	⁵ Property Name RUBY FEDERAL	⁶ Well Number 60
⁷ OGRID No. 217817	⁸ Operator Name ConocoPhillips Company	⁹ Elevation 3951'

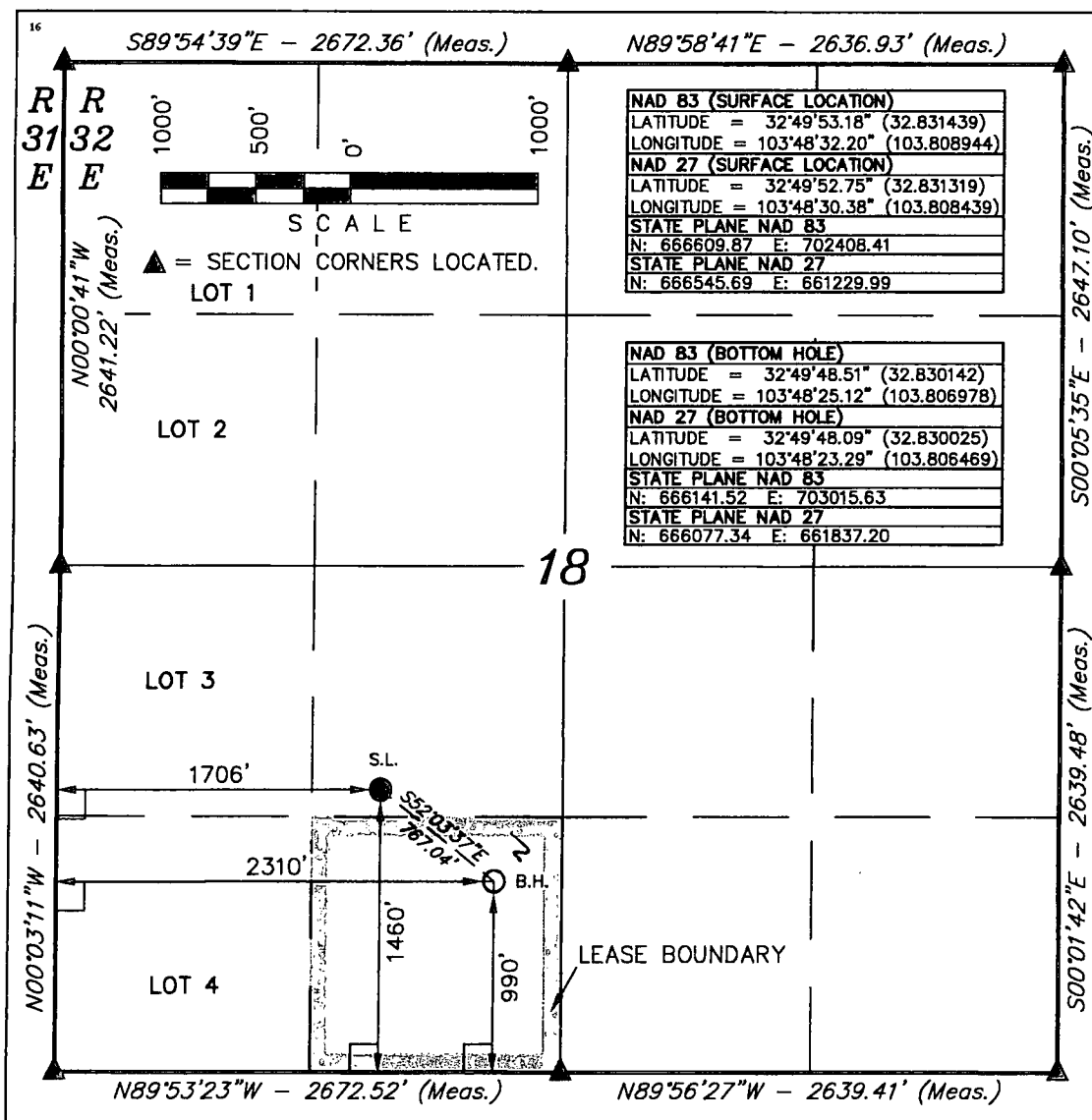
¹⁰ Surface Location

UL or lot no.	Section	Township	Range	Lot Idn	Feet from the	North/South line	Feet from the	East/West line	County
K	18	17 S	32 E		1460	SOUTH	1706	WEST	LEA

¹¹ Bottom Hole Location If Different From Surface

UL or lot no.	Section	Township	Range	Lot Idn	Feet from the	North/South line	Feet from the	East/West line	County
N	18	17 S	32 E		990	SOUTH	2310	WEST	LEA
¹² Dedicated Acres 40		¹³ Joint or Infill		¹⁴ Consolidation Code		¹⁵ Order No.			

No allowable will be assigned to this completion until all interests have been consolidated or a non-standard unit has been approved by the division.



OPERATOR CERTIFICATION

I hereby certify that the information contained herein is true and complete to the best of my knowledge and belief, and that this organization either owns a working interest or unleased mineral interest in the land including the proposed bottom hole location or has a right to drill this well at this location pursuant to a contract with an owner of such a mineral or working interest, or to a voluntary pooling agreement or a compulsory pooling order heretofore entered by the division.

Susan B. Maunders 3/4/14
Signature Date

Susan B. Maunders
Printed Name

Susan.B.Maunders@conocophillips.com
E-mail Address

SURVEYOR CERTIFICATION

I hereby certify that the well location shown on this plat was plotted from field notes of actual surveys made by me or under my supervision, and that the same is true and correct to the best of my belief.

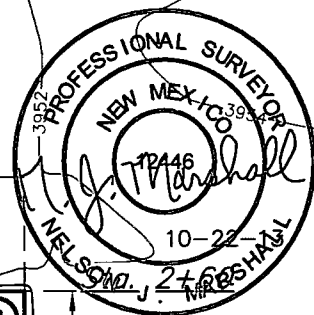
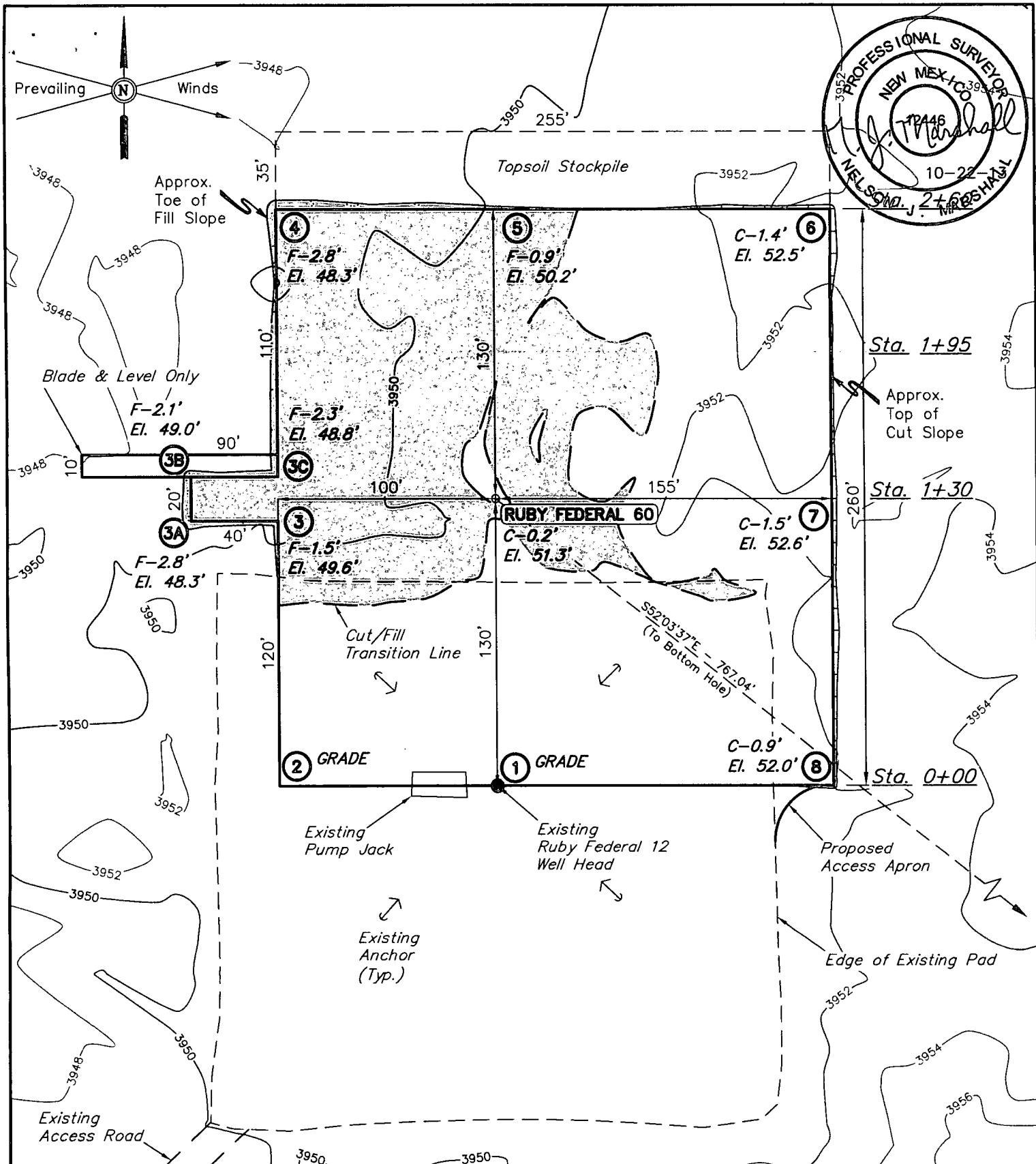
August 17, 2013

Date of Survey
Signature and Seal of Professional Surveyor:



Certificate Number:

DEC 04 2014



ELEV. UNGRADED GROUND AT LOC. STAKE = 3951.3' FINISHED GRADE ELEV. AT LOC. STAKE = 3951.1'

NOTES:

- Flare pit is to be located a min. of 100' from the well head.
- Construct diversion ditches as needed.
- Underground utilities shown on this sheet are for visualization purposes only, actual locations to be determined prior to construction.

ConocoPhillips

ConocoPhillips Company

RUBY FEDERAL 60
SECTION 18, T17S, R32E, N.M.P.M.
1460' FSL 1706' FWL

DRAWN BY: A.D.

SCALE: 1" = 60'

DATE: 08-22-13

REVISED: 10-16-13 J.S.

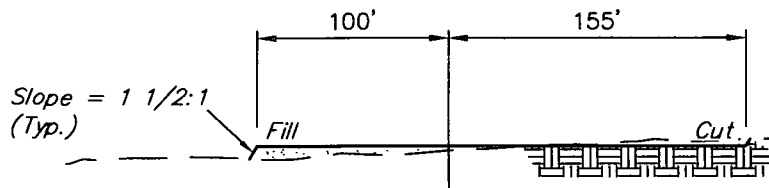


Corporate Office * 85 South 200 East
Vernal, UT 84078 * (435) 789-1017

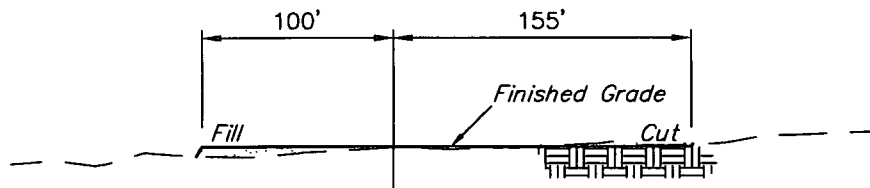
LOCATION LAYOUT

FIGURE #1

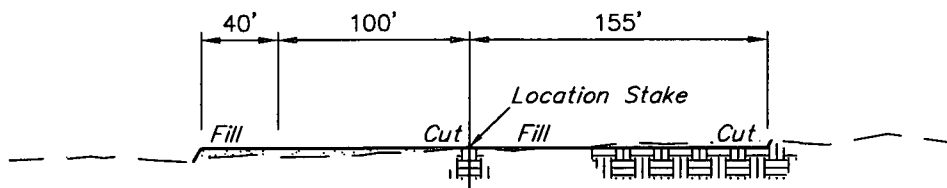
1" = 40'
X-Section
Scale
1" = 100'



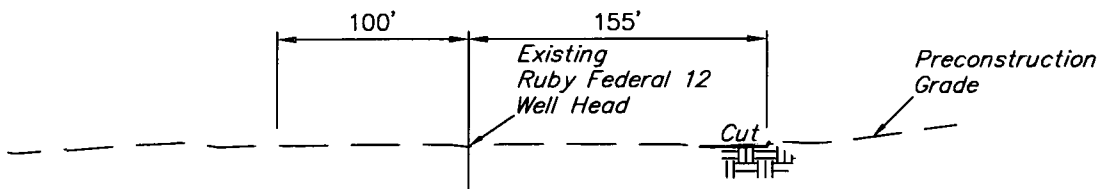
STA. 2+60



STA. 1+95



STA. 1+30



STA. 0+00

APPROXIMATE EARTHWORK QUANTITIES		APPROXIMATE SURFACE DISTURBANCE AREAS		
(1') TOPSOIL STRIPPING	1,710 Cu. Yds.		DISTANCE	ACRES
REMAINING LOCATION	140 Cu. Yds.	EXISTING WELL SITE DISTURBANCE	NA	±1.455
TOTAL CUT	1,850 Cu. Yds.	PROPOSED WELL SITE DISTURBANCE	NA	±1.291
FILL	2,090 Cu. Yds.	20' WIDE PIPELINE R-O-W DISTURBANCE	±6,436.15'	±2.955
DEFICIT MATERIAL	<240> Cu. Yds.	TOTAL SURFACE USE AREA	±6,436.15'	±5.701
TOPSOIL	1,710 Cu. Yds.			
DEFICIT UNBALANCE (After Interim Rehabilitation)	<1,950> Cu. Yds.			

NOTES:

- Fill quantity includes 5% for compaction.
- Topsoil should not be stripped below finished grade on substructure area.
- Deficit material to be obtained from an approved source.
- Topsoil stripping is new construction only.

ConocoPhillips

ConocoPhillips Company

RUBY FEDERAL 60
SECTION 18, T17S, R32E, N.M.P.M.
1460' FSL 1706' FWL

DRAWN BY: A.D.

SCALE: AS SHOWN

DATE: 08-22-13

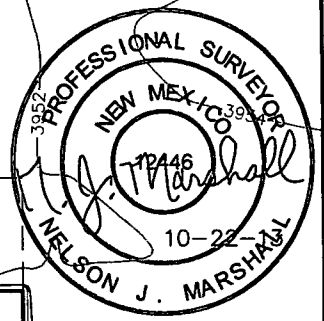
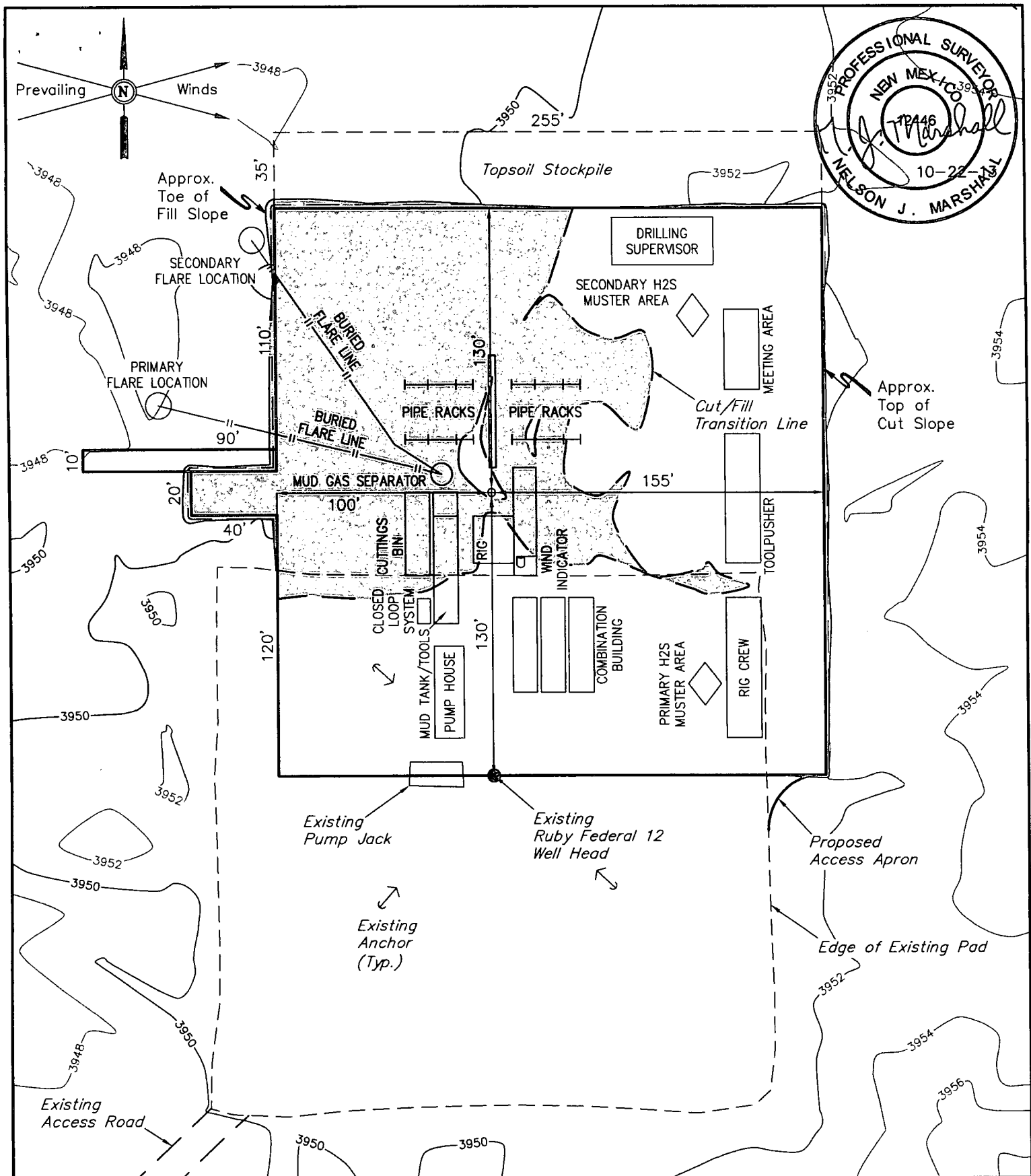
REVISED:



Corporate Office * 85 South 200 East
Vernal, UT 84078 * (435) 789-1017

TYPICAL CROSS SECTIONS

FIGURE #2



NOTES:
 • Flare pit is to be located a min. of 160' from the well head.

ConocoPhillips

ConocoPhillips Company

RUBY FEDERAL 60
SECTION 18, T17S, R32E, N.M.P.M.
1460' FSL 1706' FWL

DRAWN BY: A.D.

SCALE: 1" = 60'

DATE: 08-22-13

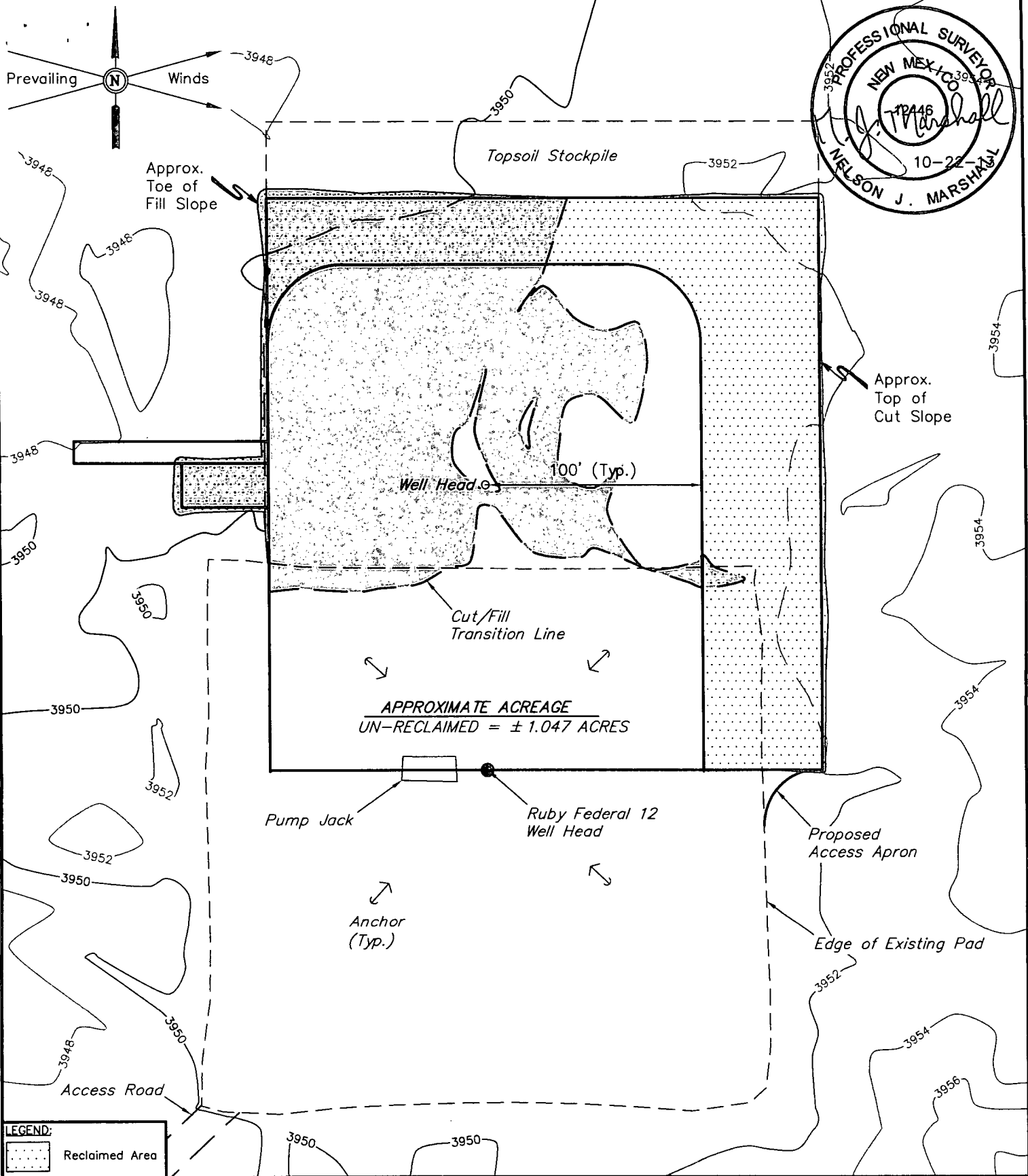
REVISED: 10-16-13 J.S.




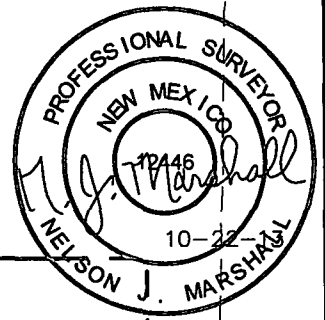
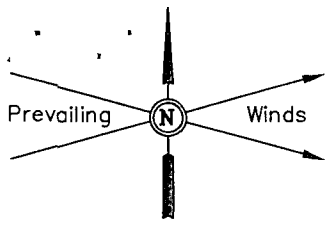
Corporate Office * 85 South 200 East
 Vernal, UT 84078 * (435) 789-1017

TYPICAL RIG LAYOUT

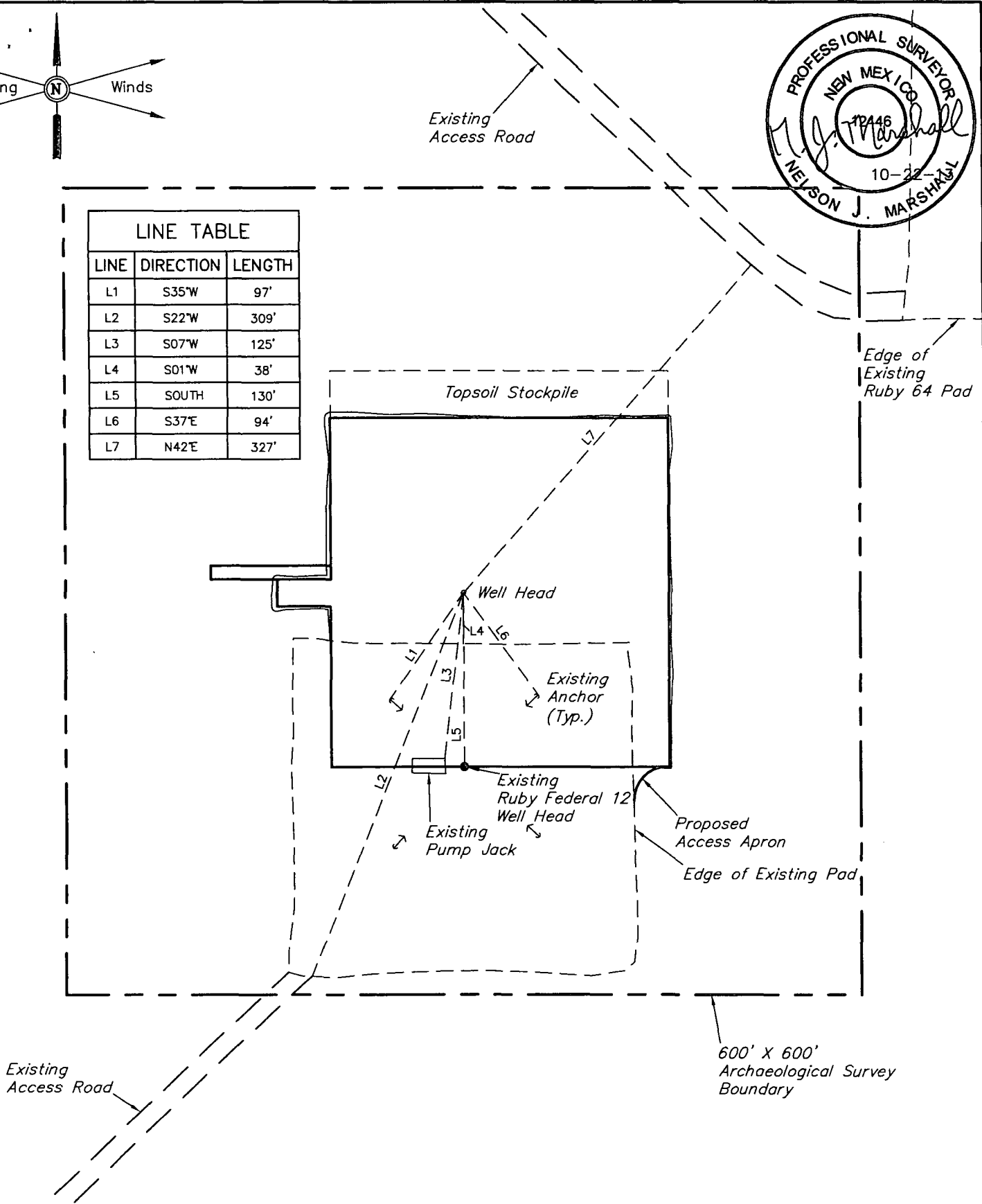
FIGURE #3



NOTES:	ConocoPhillips	ConocoPhillips Company	
	RUBY FEDERAL 60 SECTION 18, T17S, R32E, N.M.P.M. 1460' FSL 1706' FWL		
 <div>Corporate Office * 85 South 200 East Vernal, UT 84078 * (435) 789-1017</div>	DRAWN BY: A.D.	SCALE: 1" = 60'	
	DATE: 08-22-13	REVISED: 10-16-13 J.S.	
RECLAMATION DIAGRAM			FIGURE #4



LINE TABLE		
LINE	DIRECTION	LENGTH
L1	S35°W	97'
L2	S22°W	309'
L3	S07°W	125'
L4	S01°W	38'
L5	SOUTH	130'
L6	S37°E	94'
L7	N42°E	327'



NOTES:

ConocoPhillips

ConocoPhillips Company

RUBY FEDERAL 60
SECTION 18, T17S, R32E, N.M.P.M.
1460' FSL 1706' FWL

DRAWN BY: A.D.

SCALE: 1" = 100'

DATE: 08-22-13

REVISED: 10-16-13 J.S.

ARCHAEOLOGICAL SURVEY
BOUNDARY

FIGURE #5



Corporate Office * 85 South 200 East
Vernal, UT 84078 * (435) 789-1017

PIPELINE RIGHT-OF-WAY DESCRIPTION

A 20' WIDE RIGHT-OF-WAY 10' ON EACH SIDE OF THE FOLLOWING DESCRIBED CENTERLINE.

BEGINNING AT A POINT IN THE NE 1/4 SW 1/4 OF SECTION 18, T17S, R32E, N.M.P.M., WHICH BEARS N31°23'25"W 1560.75' FROM THE SOUTH 1/4 CORNER OF SAID SECTION 18, THENCE S04°27'29"W 159.59'; THENCE S86°12'20"W 265.81'; THENCE S46°23'51"W 267.73'; THENCE S16°34'30"W 37.94'; THENCE S20°55'34"E 146.77'; THENCE S10°05'51"E 32.41'; THENCE S09°58'20"W 105.35'; THENCE S29°40'39"E 45.51'; THENCE S77°22'34"E 72.47'; THENCE N87°58'03"E 337.44'; THENCE N73°39'02"E 107.44'; THENCE N88°54'36"E 71.64'; THENCE S74°48'42"E 130.26'; THENCE N89°18'36"E 850.69'; THENCE N02°37'18"W 111.87'; THENCE N80°56'10"E 228.08'; THENCE S12°07'12"E 138.14'; THENCE S89°20'24"E 1104.04'; THENCE N66°24'35"E 187.12'; THENCE N07°26'30"E 109.08'; THENCE N02°52'57"W 212.56'; THENCE N04°32'52"E 200.16'; THENCE N00°04'54"E 504.35'; THENCE N06°14'20"W 115.64'; THENCE N46°29'08"W 30.33'; THENCE N64°32'44"W 142.95'; THENCE S89°40'27"W 130.07'; THENCE S89°38'01"W 399.99'; THENCE S89°38'14"W 190.72' TO A POINT IN THE NW 1/4 SE 1/4 OF SAID SECTION 18, WHICH BEARS S66°29'08"W 1801.36' FROM THE EAST 1/4 CORNER OF SAID SECTION 18. THE SIDE LINES OF SAID DESCRIBED RIGHT-OF-WAY BEING SHORTENED OR ELONGATED TO MEET THE GRANTOR'S PROPERTY LINES. BASIS OF BEARINGS IS A G.P.S. OBSERVATION. CONTAINS 2.955 ACRES MORE OR LESS.

BEGINNING OF PIPELINE STA. 0+00 BEARS N31°23'25"W 1560.75' FROM THE SOUTH 1/4 CORNER OF SECTION 18, T17S, R32E, N.M.P.M.

END OF PIPELINE STA. 64+36.15 BEARS S66°29'08"W 1801.36' FROM THE EAST 1/4 CORNER OF SECTION 18, T17S, R32E, N.M.P.M.

LOT 2

1/4 Section Line

Sec. 18

END OF PROPOSED PIPELINE RIGHT-OF-WAY STA. 64+36.15 (At Proposed Ruby Facility Pad)

LOT 3

BLM

Proposed Ruby Federal 60 Well Pad

SW 1/4

1/16 Section Line

Existing Ruby Federal 12 Well Pad

LOT 4

BEGINNING OF PROPOSED PIPELINE RIGHT-OF-WAY STA. 0+00 (At Edge of Proposed Ruby Federal 60 Well Pad)

BLM

BLM

SE 1/4

BLM

BLM

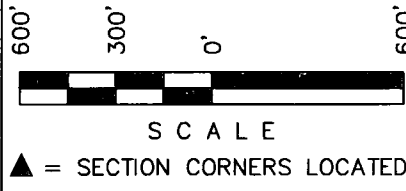
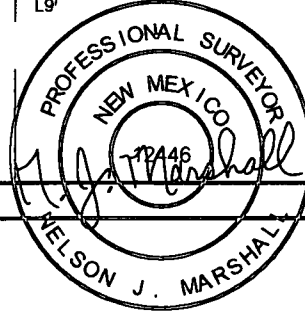
1/4 Section Line

Existing Well Pad

1/16 Section Line

Section Line

NOTES:



LINE TABLE

LINE	DIRECTION	LENGTH
L1	S04°27'29"W	159.59'
L2	S86°12'20"W	265.81'
L3	S46°23'51"W	267.73'
L4	S16°34'30"W	37.94'
L5	S20°55'34"E	146.77'
L6	S10°05'51"E	32.41'
L7	S09°58'20"W	105.35'
L8	S29°40'39"E	45.51'
L9	S77°22'34"E	72.47'
L10	N87°58'03"E	337.44'
L11	N73°39'02"E	107.44'
L12	N88°54'36"E	71.64'
L13	S74°48'42"E	130.26'
L14	N89°18'36"E	850.69'
L15	N02°37'18"W	111.87'
L16	N80°56'10"E	228.08'
L17	S12°07'12"E	138.14'
L18	S89°20'24"E	1104.04'
L19	N66°24'35"E	187.12'
L20	N07°26'30"E	109.08'
L21	N02°52'57"W	212.56'
L22	N04°32'52"E	200.16'
L23	N00°04'54"E	504.35'
L24	N06°14'20"W	115.64'
L25	N46°29'08"W	30.33'
L26	N64°32'44"W	142.95'

LINE	DIRECTION	LENGTH
L27	S89°40'27"W	130.07'
L28	S89°38'01"W	399.99'
L29	S89°38'14"W	190.72'

ConocoPhillips

ConocoPhillips Company

RUBY FEDERAL 60
SECTION 18, T17S, R32E, N.M.P.M.
1460' FSL 1706' FEL

DRAWN BY: A.D.

SCALE: 1" = 600'

DATE: 08-22-13

REVISED:

PIPELINE R-O-W

FIGURE #6

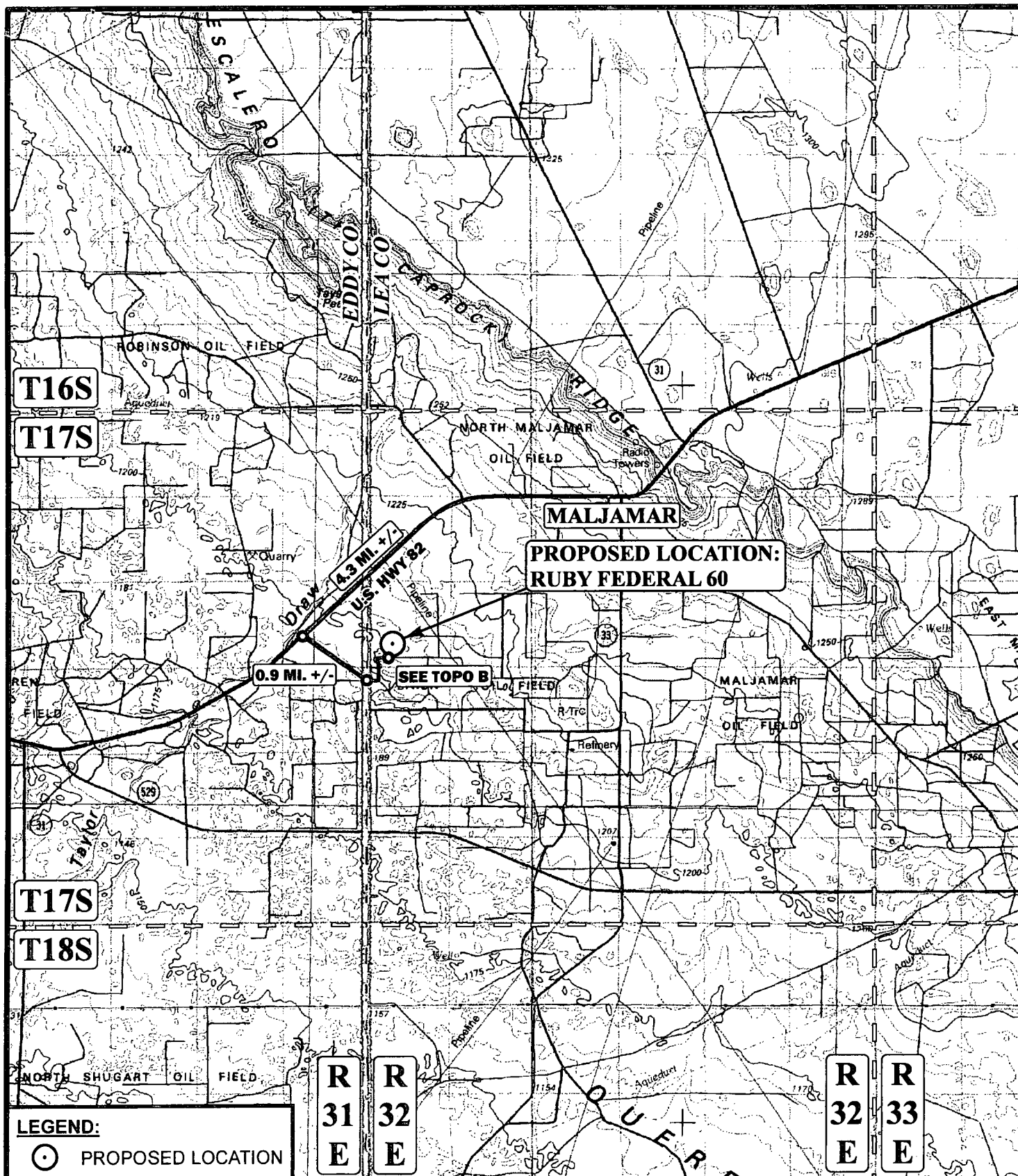


Corporate Office * 85 South 200 East
Vernal, UT 84078 * (435) 789-1017

ConocoPhillips Company
RUBY FEDERAL 60
SECTION 18, T17S, R32E, N.M.P.M.

BEGINNING AT THE INTERSECTION OF U.S. HIGHWAY 82 AND MALJAMAR ROAD/COUNTY ROAD 126, PROCEED IN A WESTERLY, THEN SOUTHWESTERLY DIRECTION FROM MALJAMAR, NEW MEXICO ALONG U.S. HIGHWAY 82 APPROXIMATELY 4.3 MILES TO THE JUNCTION OF THIS ROAD AND COUNTY ROAD 22/RIPPLE ROAD TO THE SOUTHEAST; TURN LEFT AND PROCEED IN A SOUTHEASTERLY DIRECTION APPROXIMATELY 0.9 MILES TO THE JUNCTION OF THIS ROAD AND AN EXISTING ROAD TO THE EAST; TURN LEFT AND PROCEED IN AN EASTERLY, THEN NORTHERLY, THEN EASTERLY DIRECTION APPROXIMATELY 0.5 MILES TO THE JUNCTION OF THIS ROAD AND AN EXISTING ROAD TO THE NORTH; TURN LEFT AND PROCEED IN A NORTHERLY, THEN NORTHEASTERLY DIRECTION APPROXIMATELY 0.1 MILES TO THE RUBY FEDERAL 12 LOCATION AND THE PROPOSED LOCATION.

TOTAL DISTANCE FROM MALJAMAR, NEW MEXICO TO THE PROPOSED LOCATION IS APPROXIMATELY 5.8 MILES.



LEGEND:

○ PROPOSED LOCATION

SCALE: 1:100,000

REVISED:

DRAWN BY: J.L.H.

DATE DRAWN: 08-21-13

N

ConocoPhillips

ConocoPhillips Company

RUBY FEDERAL 60
SECTION 18, T17S, R32E, N.M.P.M.
1460' FSL 1705' FWL

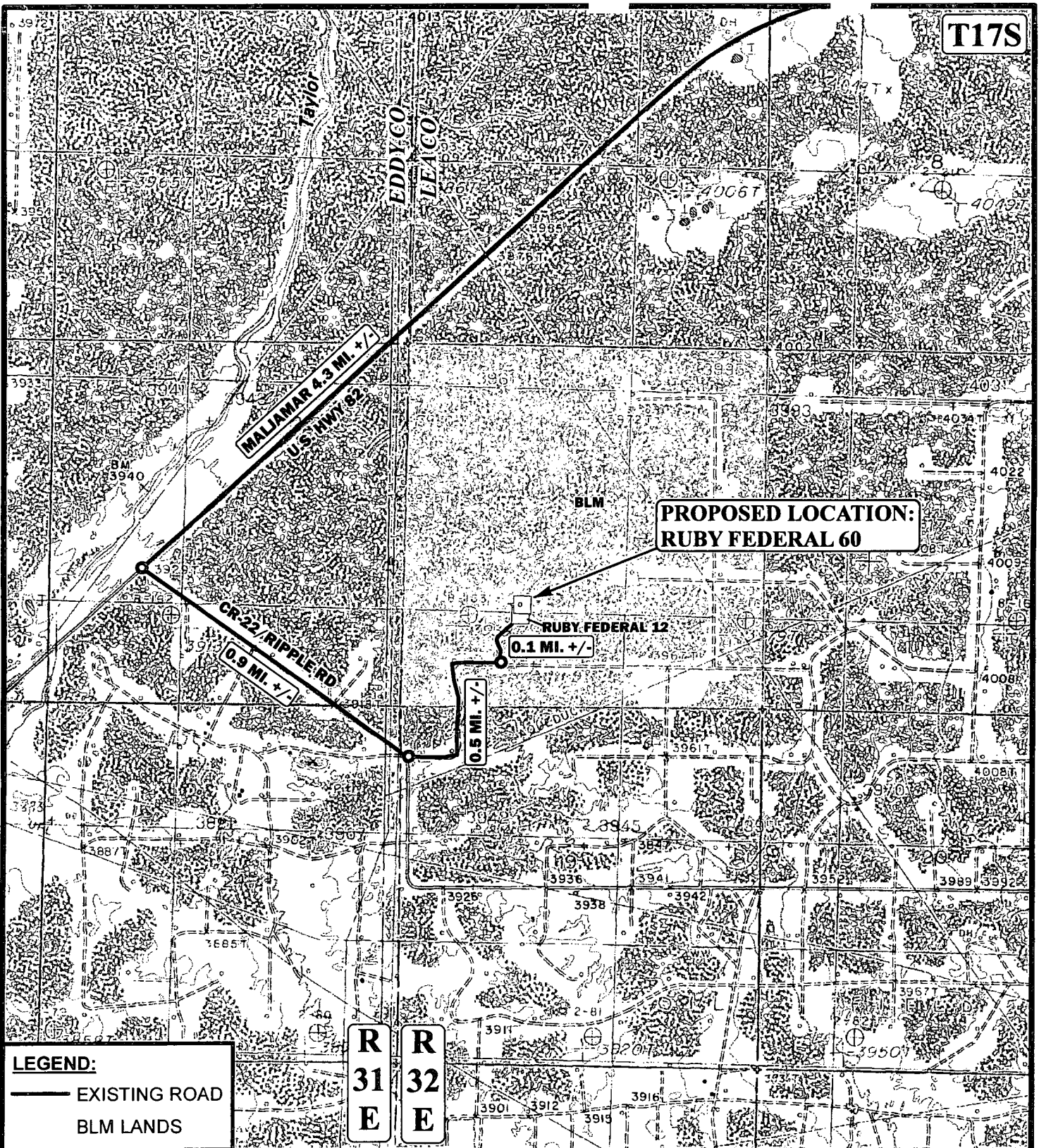
ACCESS ROAD MAP

TOPO A



Corporate Office * 85 South 200 East
Vernal, UT 84078 * (435) 789-1017

T17S



LEGEND:

— EXISTING ROAD
 BLM LANDS

R 31 E R 32 E

*PARCEL DATA SHOWN HAS BEEN OBTAINED FROM VARIOUS SOURCES AND SHOULD BE USED FOR MAPPING, GRAPHIC AND PLANNING PURPOSES ONLY. NO WARRANTY IS MADE BY UINAH ENGINEERING & LAND SURVEYING (UELS) FOR ACCURACY OF THE PARCEL DATA.

SCALE: 1" = 2000'

REVISED:

DRAWN BY: J.L.H.

DATE DRAWN: 08-21-13



ConocoPhillips

ConocoPhillips Company

RUBY FEDERAL 60
 SECTION 18, T17S, R32E, N.M.P.M.
 1460' FSL 1705' FWL

ACCESS ROAD MAP

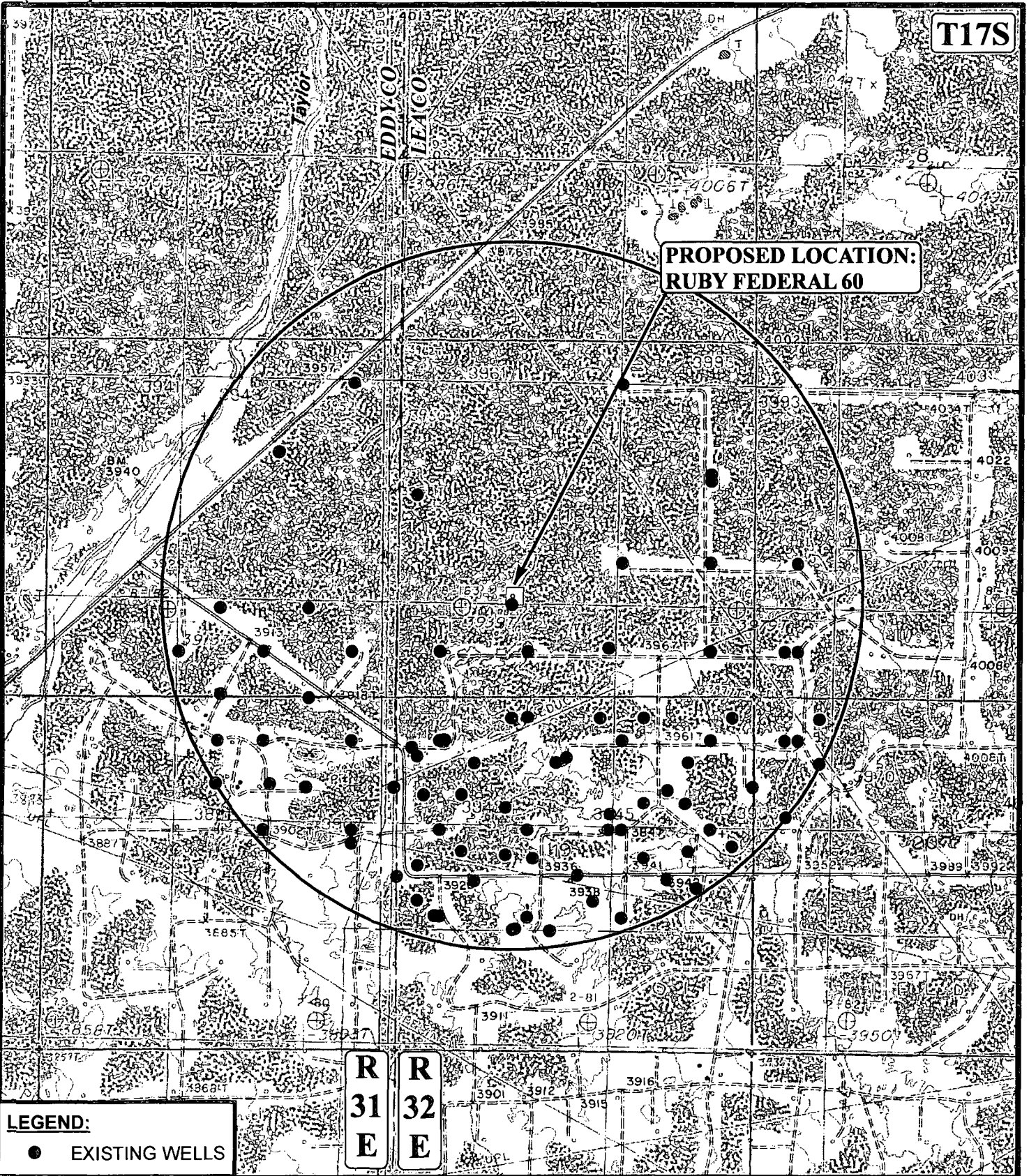
TOPO B



Corporate Office * 85 South 200 East
 Vernal, UT 84078 * (435) 789-1017

T17S

**PROPOSED LOCATION:
RUBY FEDERAL 60**



LEGEND:

- EXISTING WELLS

R 31 E **R 32 E**

SCALE: 1" = 2000'

REVISED:

DRAWN BY: J.L.H.

DATE DRAWN: 08-21-13



ConocoPhillips

ConocoPhillips Company

RUBY FEDERAL 60
SECTION 18, T17S, R32E, N.M.P.M.
1460' FSL 1705' FWL

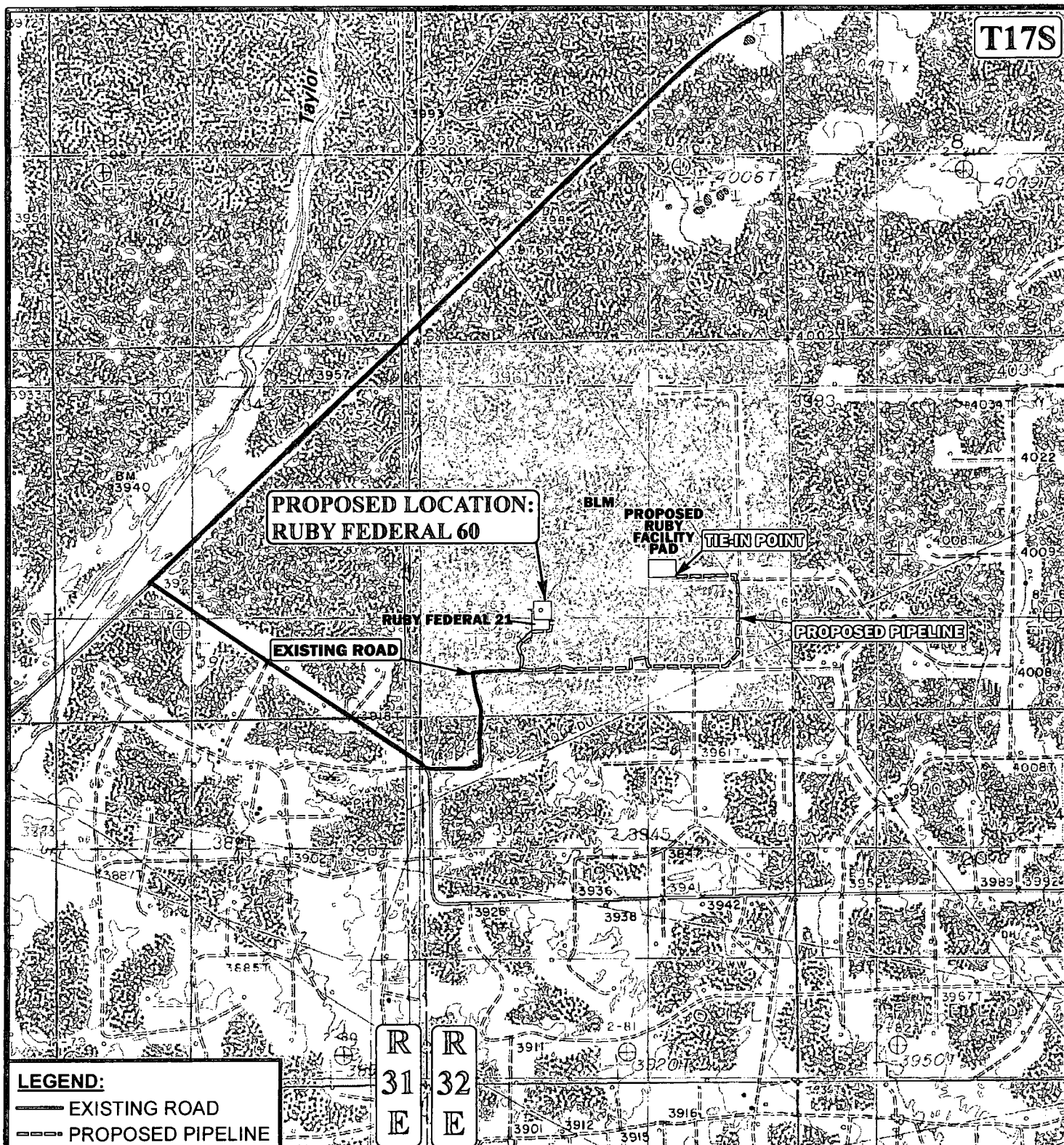
TOPOGRAPHIC MAP

TOPO C



Corporate Office * 85 South 200 East
Vernal, UT 84078 * (435) 789-1017

T17S



APPROXIMATE TOTAL PIPELINE DISTANCE 6,436' +/-

*PARCEL DATA SHOWN HAS BEEN OBTAINED FROM VARIOUS SOURCES AND SHOULD BE USED FOR MAPPING, GRAPHIC AND PLANNING PURPOSES ONLY. NO WARRANTY IS MADE BY UINTAH ENGINEERING & LAND SURVEYING (UELS) FOR ACCURACY OF THE PARCEL DATA.

SCALE: 1" = 2000'

REVISED:

DRAWN BY: J.L.H.

DATE DRAWN: 08-21-13



ConocoPhillips

ConocoPhillips Company

RUBY FEDERAL 60
SECTION 18, T17S, R32E, N.M.P.M.
1460' FSL 1705' FWL

PIPELINE MAP

TOPO.D



Corporate Office * 85 South 200 East
 Vernal, UT 84078 * (435) 789-1017



PHOTO: VIEW FROM CORNER #6 TO LOCATION STAKE

CAMERA ANGLE: SOUTHWESTERLY

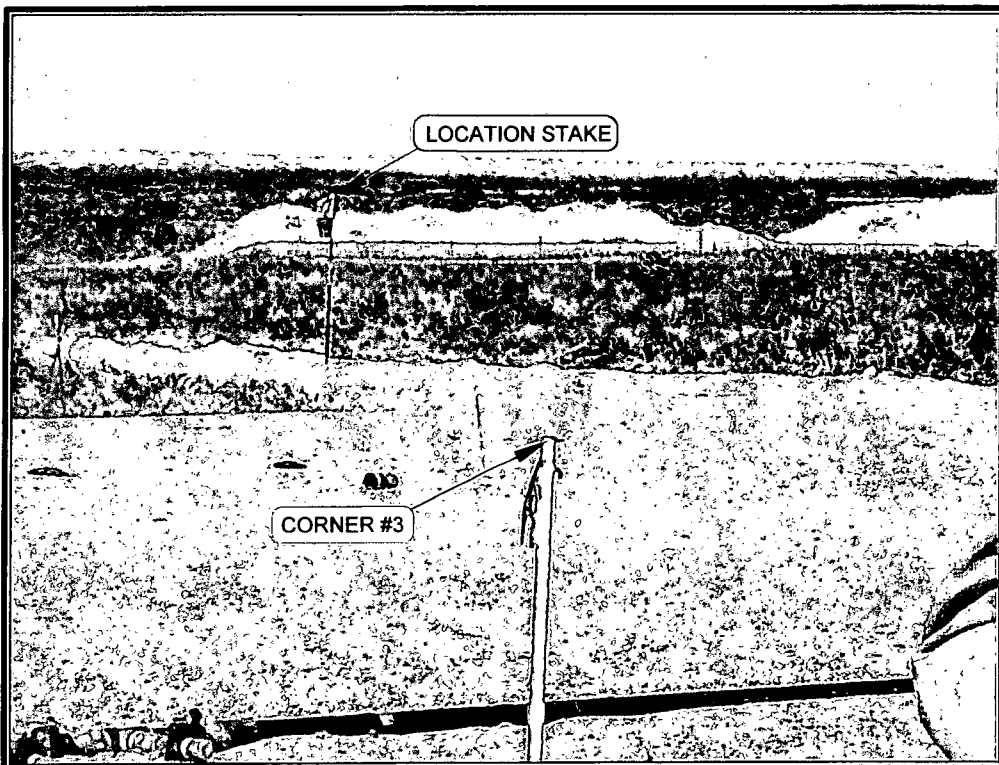


PHOTO: VIEW FROM CORNER #3 TO LOCATION STAKE

CAMERA ANGLE: EASTERLY

NOTES:

ConocoPhillips

ConocoPhillips Company

RUBY FEDERAL 60
SECTION 18, T17S, R32E, N.M.P.M.
1460' FSL 1705' FWL

TAKEN BY: J.V.

DRAWN BY: J.L.H.

REVISED:

DATE: 08-17-13

DATE: 08-21-13



Corporate Office * 85 South 200 East
Vernal, UT 84078 * (435) 789-1017

PHOTO SHEET