

District Office

☐ AMENDED REPORT

State of New Mexico
Energy, Minerals & Natural Resources Department
OIL CONSERVATION DIVISION
1220 South St. Francis Dr.
Santa Fe, NM 87505

¹ API Number 30-025-	² Pool Code 7280	³ Pool Name BRADLEY; BOHE SPRING
⁴ Property Code 313993	⁵ Property Name COBBER 21 FED	⁶ Well Number 1H
⁷ OGRID No. 6137	⁸ Operator Name DEVON ENERGY PRODUCTION COMPANY, L.P.	⁹ Elevation 3286.0

10 Surface Location									
UL or lot no.	Section	Township	Range	Lot Idn	Feet from the	North/South line	Feet from the	East/West line.	County
P	21	26 S	34 E		65	SOUTH	660	EAST	LEA

UL or lot no.	Section	Township	Range	Lot 1dn	Feet from the	North/South line	Feet from the	East/West line	County
A	21	26 S	34 E		330	NORTH	660	EAST	LEA

¹² Dedicated Acres 160	¹³ Joint or Infill	¹⁴ Consolidation Code	¹⁵ Order No.
--------------------------------------	-------------------------------	----------------------------------	-------------------------

N89°27'52"E 2649.93 FT N89°29'19"E 2640.66 FT

NW CORNER SEC. 21 LAT. = 32.0361753°N LONG. = 103.4833609°W NMSP EAST (FT) N = 377935.32 E = 804719.56	N O CORNER SEC. 21 LAT. = 32.0361857°N LONG. = 103.4748110°W NMSP EAST (FT) N = 377960.09 E = 807368.98	NE CORNER SEC. 21 LAT. = 32.0381928°N LONG. = 103.4662911°W NMSP EAST (FT) N = 377983.66 E = 810009.13
		BOTTOM OF HOLE BOTTOM OF HOLE LAT. = 32.0352840°N LONG. = 103.4684201°W NMSP EAST (FT) N = 377647.84 E = 809352.05
		E O CORNER SEC. 21 LAT. = 32.0289466°N LONG. = 103.4662875°W NMSP EAST (FT) N = 375347.67 E = 810031.41
COBBER "21" FED #1H ELEV. = 3286.0' LAT. = 32.0218699°N (NAD83) LONG. = 103.4684096°W NMSP EAST (FT) N = 372767.99 E = 809394.37		
		SURFACE LOCATION
SW CORNER SEC. 21 LAT. = 32.0216677°N LONG. = 103.4833474°W NMSP EAST (FT) N = 372657.71 E = 804765.29	S O CORNER SEC. 21 LAT. = 32.0216813°N LONG. = 103.4748145°W NMSP EAST (FT) N = 372683.53 E = 807409.84	SE CORNER SEC. 21 LAT. = 32.0216943°N LONG. = 103.4662802°W NMSP EAST (FT) N = 372709.41 E = 810054.84

S89°26'26"W 2645.09 FT S89°26'22"W 2645.52 FT

N00°29'02"W 2636.75 FT

N00°30'14"W 2641.87 FT

S00°29'03"E 2636.49 FT

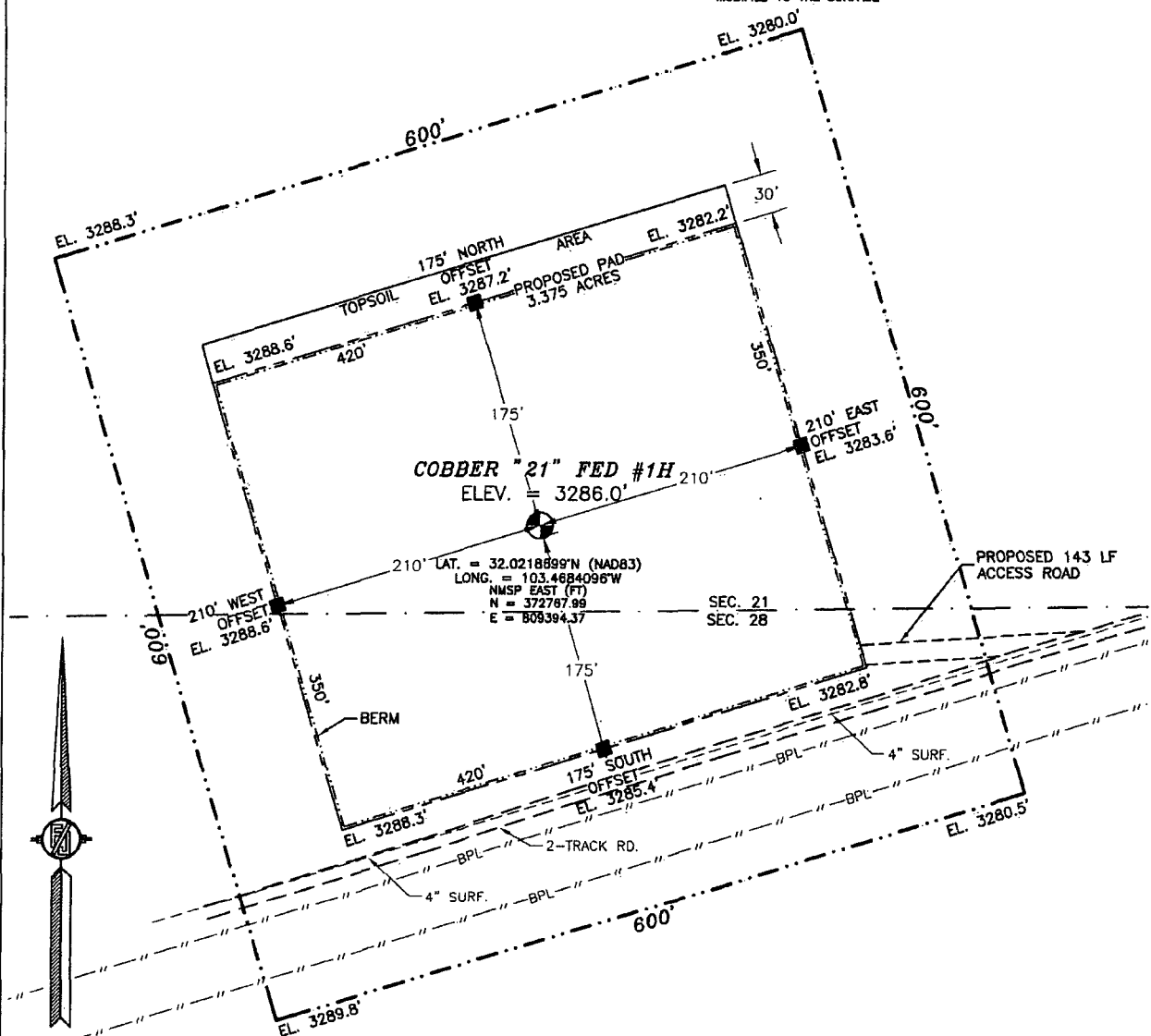
S00°30'32"E 2638.76 FT

DEC 04 2014

SECTION 21, TOWNSHIP 26 SOUTH, RANGE 34 EAST, N.M.P.M.
LEA COUNTY, STATE OF NEW MEXICO

SITE MAP

NOTE: LATITUDE AND LONGITUDE COORDINATES ARE SHOWN USING THE NORTH AMERICAN DATUM OF 1983 (NAD83). LISTED NEW MEXICO STATE PLANE EAST COORDINATES ARE GRID (NAD83). BASIS OF BEARING AND DISTANCES USED ARE NEW MEXICO STATE PLANE EAST COORDINATES MODIFIED TO THE SURFACE



0 12 60 120 240

SCALE 1" = 120'

DIRECTIONS TO LOCATION

FROM STATE HIGHWAY 128 AND CR 2 (BATTLE AXE ROAD) GO SOUTH AND WEST ON CR 2 12.0 MILES, TURN LEFT ON CAUCHE ROAD AND GO SOUTH 0.8 MILES, TURN LEFT AND GO EAST 3.0 MILES, TURN RIGHT AND GO SOUTHEAST 3.30 MILES PAST CATTLE GUARD, TURN RIGHT ON 2-TRACK PIPELINE ROAD, GO SOUTHWEST 0.76 MILES TO SOUTHEAST CORNER OF PROPOSED PAD.

DEVON ENERGY PRODUCTION COMPANY, L.P.

COBBER "21" FED #1H

LOCATED 65 FT. FROM THE SOUTH LINE
AND 660 FT. FROM THE EAST LINE OF
SECTION 21, TOWNSHIP 26 SOUTH,
RANGE 34 EAST, N.M.P.M.

LEA COUNTY, STATE OF NEW MEXICO

APRIL 4, 2014

SURVEY NO. 2895

MADRON SURVEYING, INC. 301 SOUTH CANAL (575) 234-3341

CARLSBAD, NEW MEXICO

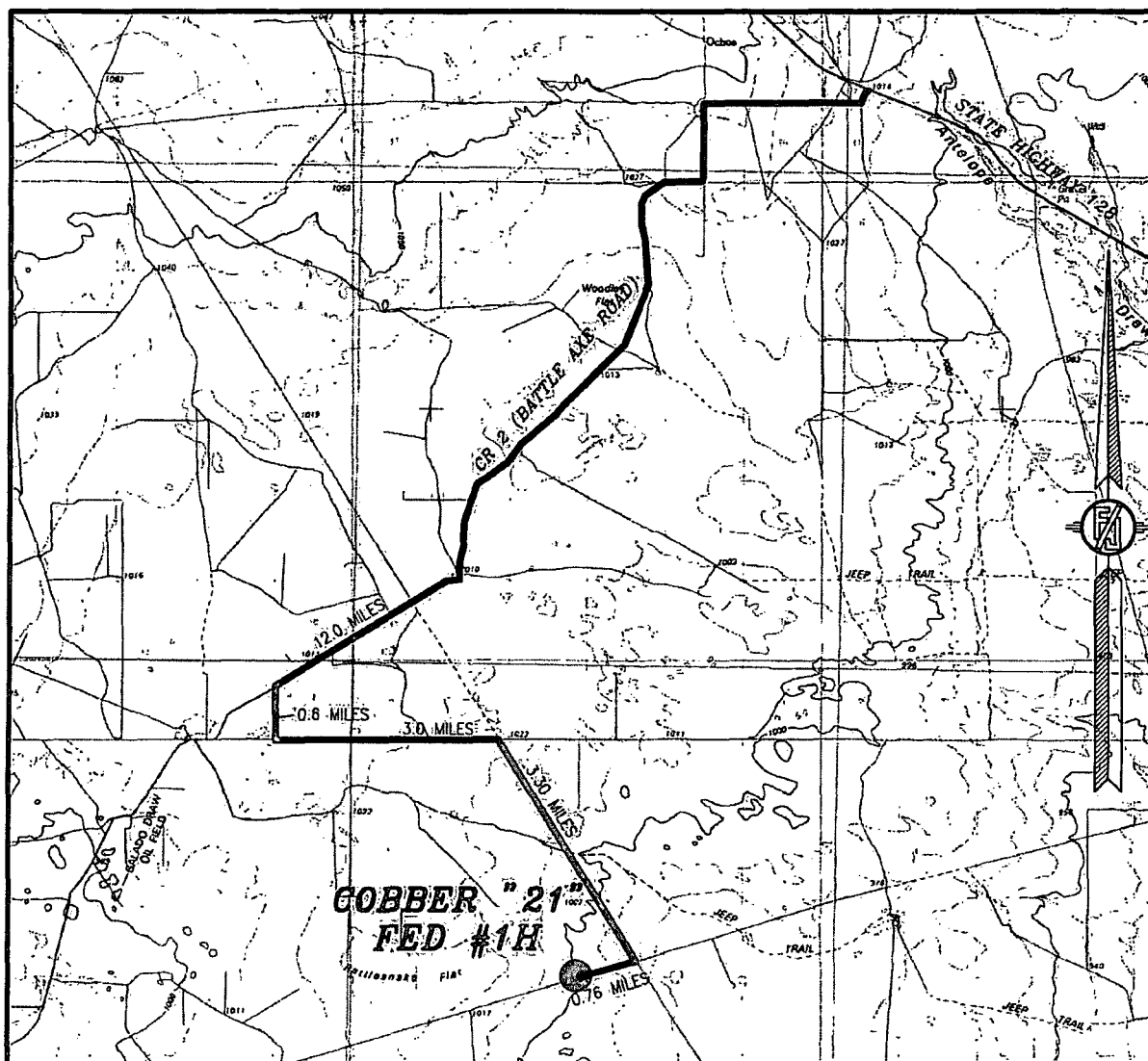
A detailed topographic map of a mountainous region. The map features numerous contour lines indicating elevation. Key labels include "COBBER 21" and "FED #1H" in the center, with a small square marker below them. Other labels include "Drill Hole 3331" in the upper left, "Flat" on the left side, and various elevation points such as 3292, 3289, 3230, 3221, 3264, 3277, 3275, 3262, 3254, 3237, 3266, 3272, 3271, 3270, 3269, 3268, 3267, 3266, 3265, 3264, 3263, 3262, 3261, 3260, 3259, 3258, 3257, 3256, 3255, 3254, 3253, 3252, 3251, 3250, 3249, 3248, 3247, 3246, 3245, 3244, 3243, 3242, 3241, 3240, 3239, 3238, 3237, 3236, 3235, 3234, 3233, 3232, 3231, 3230, 3229, 3228, 3227, 3226, 3225, 3224, 3223, 3222, 3221, 3220, 3219, 3218, 3217, 3216, 3215, 3214, 3213, 3212, 3211, 3210, 3209, 3208, 3207, 3206, 3205, 3204, 3203, 3202, 3201, 3200. A dashed line runs diagonally across the map. A north arrow is located in the bottom right corner.

NOT TO SCALE

APRIL 4, 2014

MADRON SURVEYING, INC. 301 SOUTH CANAL (575) 234-3341 CARLSBAD, NEW MEXICO

SECTION 21, TOWNSHIP 26 SOUTH, RANGE 34 EAST, N.M.P.M.
LEA COUNTY, STATE OF NEW MEXICO
VICINITY MAP



DISTANCES IN MILES

NOT TO SCALE

DEVON ENERGY PRODUCTION COMPANY, L.P.

GOBBER "21" FED #1H

LOCATED 65 FT. FROM THE SOUTH LINE
AND 660 FT. FROM THE EAST LINE OF
SECTION 21, TOWNSHIP 26 SOUTH,
RANGE 34 EAST, N.M.P.M.
LEA COUNTY, STATE OF NEW MEXICO

DIRECTIONS TO LOCATION

FROM STATE HIGHWAY 128 AND CR 2 (BATTLE AXE ROAD) GO SOUTH AND WEST ON CR 2 12.0 MILES, TURN LEFT ON CALICHE ROAD AND GO SOUTH 0.8 MILES, TURN LEFT AND GO EAST 3.0 MILES, TURN RIGHT AND GO SOUTHEAST 3.30 MILES PAST CATTLE GUARD, TURN RIGHT ON 2-TRACK PIPELINE ROAD, GO SOUTHWEST 0.76 MILES TO SOUTHEAST CORNER OF PROPOSED PAD.

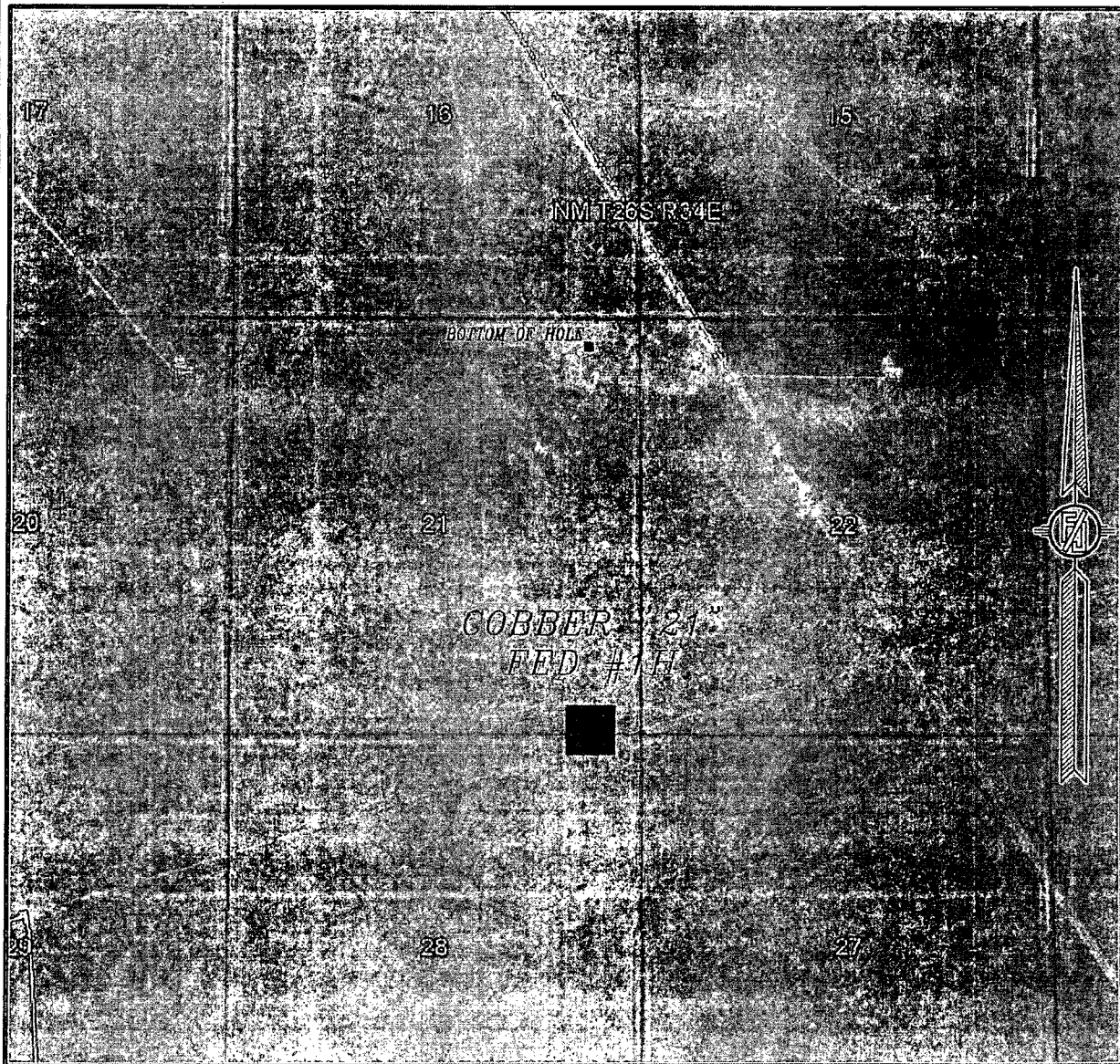
APRIL 4, 2014

SURVEY NO. 2895

MADRON SURVEYING, INC. 301 SOUTH CANAL (575) 234-3341

CARLSBAD, NEW MEXICO

SECTION 21, TOWNSHIP 26 SOUTH, RANGE 34 EAST, N.M.P.M.
LEA COUNTY, STATE OF NEW MEXICO
AERIAL PHOTO



NOT TO SCALE
AERIAL PHOTO:
GOOGLE EARTH
APRIL 2013

DEVON ENERGY PRODUCTION COMPANY, L.P.

COBBER "21" FED #1H

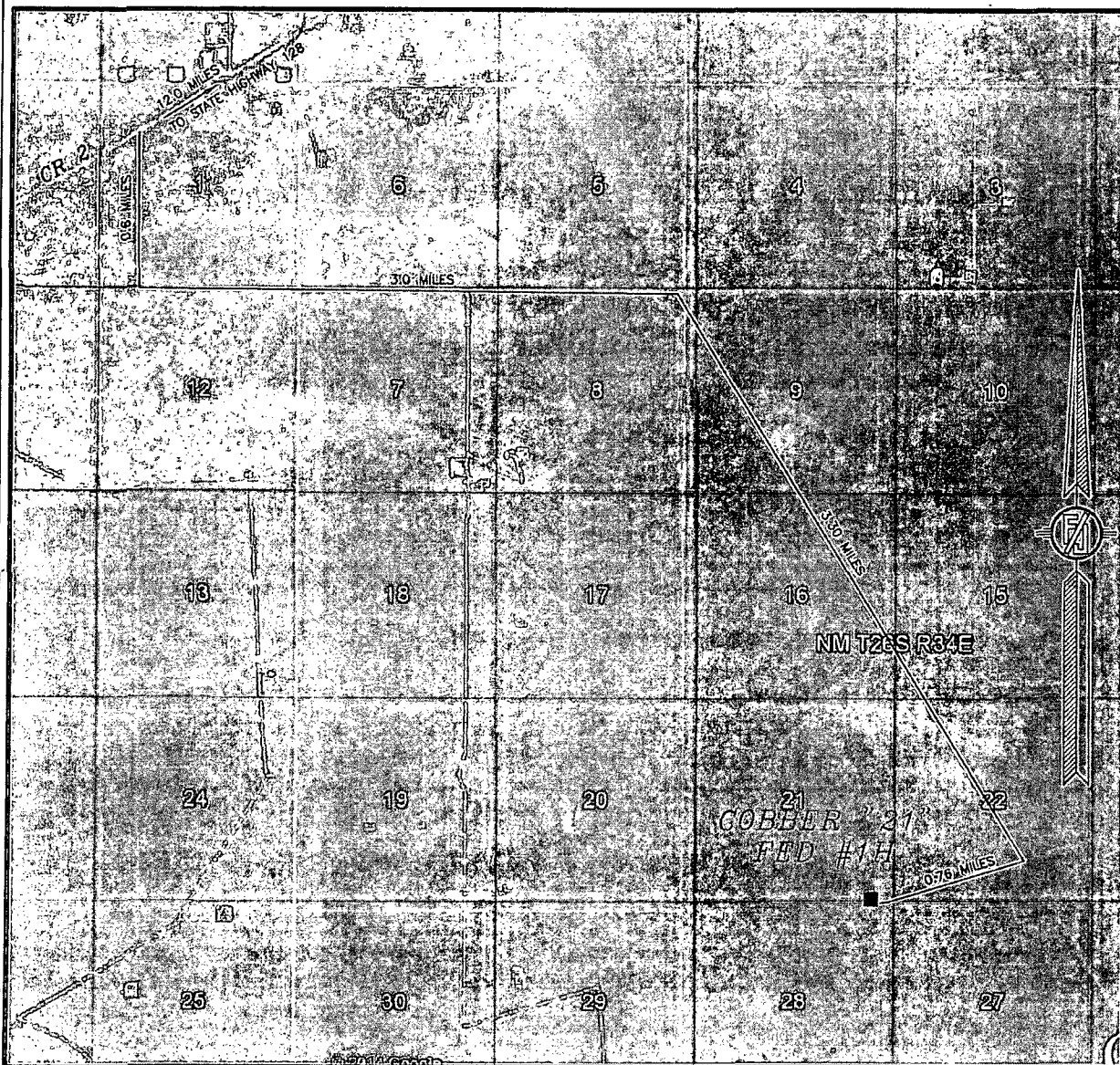
LOCATED 65 FT. FROM THE SOUTH LINE
AND 660 FT. FROM THE EAST LINE OF
SECTION 21, TOWNSHIP 26 SOUTH,
RANGE 34 EAST, N.M.P.M.
LEA COUNTY, STATE OF NEW MEXICO

APRIL 4, 2014

SURVEY NO. 2895

MADRON SURVEYING, INC. 301 SOUTH CANAL (575) 234-3341 CARLSBAD, NEW MEXICO

SECTION 21, TOWNSHIP 26 SOUTH, RANGE 34 EAST, N.M.P.M.
LEA COUNTY, STATE OF NEW MEXICO
ACCESS AERIAL ROUTE MAP



NOT TO SCALE
AERIAL PHOTO:
GOOGLE EARTH
APRIL 2013

DEVON ENERGY PRODUCTION COMPANY, L.P.

COBBER "21" FED #1H

LOCATED 65 FT. FROM THE SOUTH LINE
AND 660 FT. FROM THE EAST LINE OF
SECTION 21, TOWNSHIP 26 SOUTH,
RANGE 34 EAST, N.M.P.M.
LEA COUNTY, STATE OF NEW MEXICO

APRIL 4, 2014

SURVEY NO. 2895

MADRON SURVEYING, INC. 301 SOUTH CANAL (575) 234-3341 CARLSBAD, NEW MEXICO

