

District I
1625 N. French Dr., Hobbs, NM 88240
Phone: (575) 393-6161 Fax: (575) 393-0720
District II
311 S. First St., Artesia, NM 88210
Phone: (575) 748-1283 Fax: (575) 748-9720
District III
1000 Rio Brazos Road, Aztec, NM 87410
Phone: (505) 334-6178 Fax: (505) 334-6170
District IV
1220 S. St. Francis Dr., Santa Fe, NM 87505
Phone: (505) 476-3460 Fax: (505) 476-3462

State of New Mexico
Energy, Minerals & Natural Resources Department
OIL CONSERVATION DIVISION
1220 South St. Francis Dr.
Santa Fe, NM 87505

Form C-102
Revised August 1, 2011
Submit one copy to appropriate
District Office

☒ AMENDED REPORT

WELL LOCATION AND ACREAGE DEDICATION PLAT

¹ API Number 30-025-41564		² Pool Code 97922		³ Pool Name WC-025 G-06 S223421L; BONE SPRING	
⁴ Property Code 30863		⁵ Property Name GAUCHO UNIT			⁶ Well Number 12H
⁷ OGRID No. 6137		⁸ Operator Name DEVON ENERGY PRODUCTION COMPANY, L.P.			⁹ Elevation 3464.5

¹⁰ Surface Location

UL or lot no.	Section	Township	Range	Lot Idn	Feet from the	North/South line	Feet from the	East/West line	County
A	20	22 S	34 E		275	NORTH	575	EAST	LEA

¹¹ Bottom Hole Location If Different From Surface

UL or lot no.	Section	Township	Range	Lot Idn	Feet from the	North/South line	Feet from the	East/West line	County
P	20	22 S	34 E		330	SOUTH	660	EAST	LEA

¹² Dedicated Acres 160	¹³ Joint or Infill	¹⁴ Consolidation Code	¹⁵ Order No.
--------------------------------------	-------------------------------	----------------------------------	-------------------------

No allowable will be assigned to this completion until all interests have been consolidated or a non-standard unit has been approved by the division.

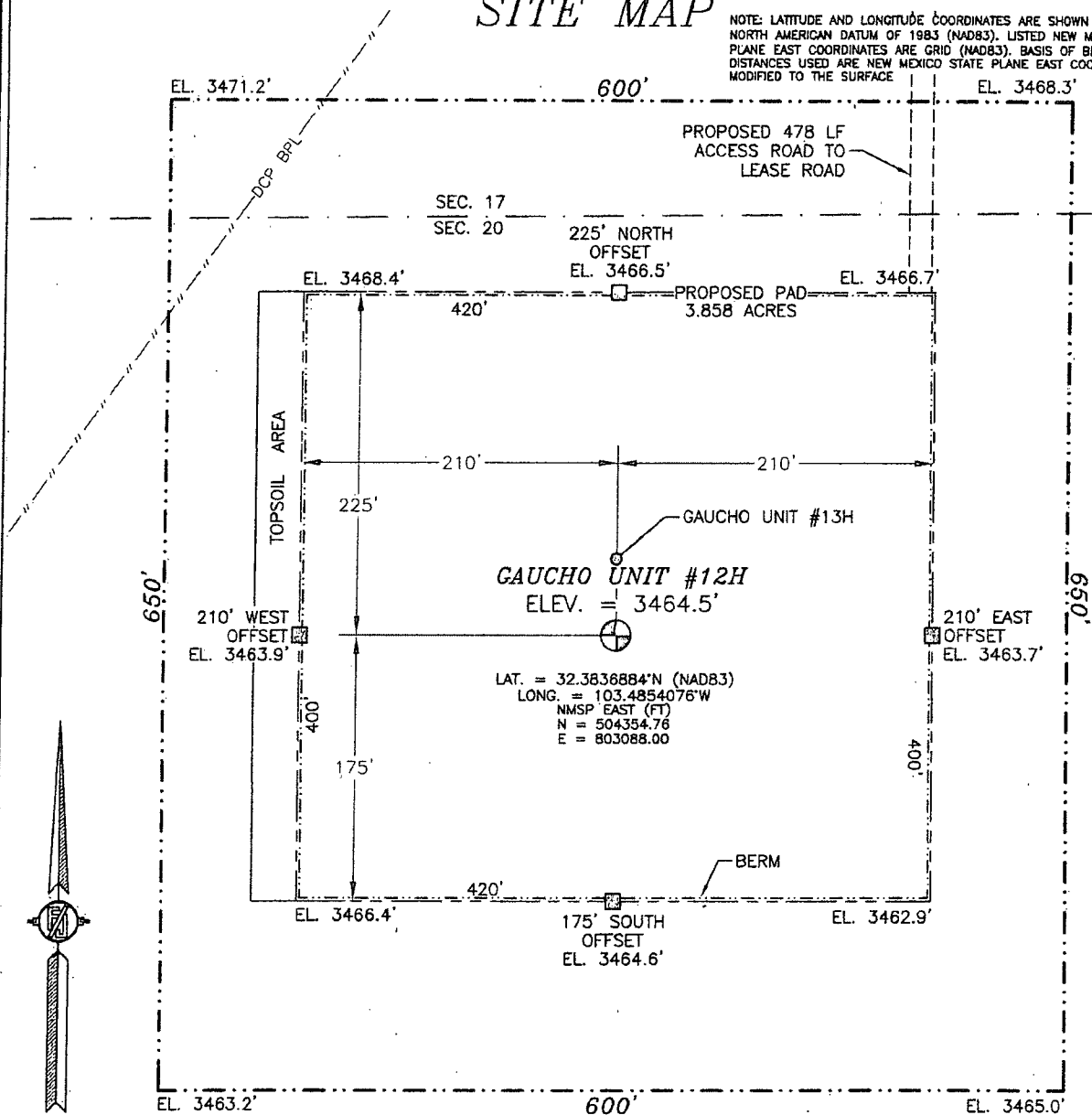
<p>N89°35'49"E 2633.37 FT</p> <p>NW CORNER SEC. 20 LAT. = 32.3844523°N LONG. = 103.5006223°W</p> <p>NMSP EAST (FT) N = 504595.75 E = 798388.98</p> <p>W Q CORNER SEC. 20 LAT. = 32.3771965°N LONG. = 103.5006384°W</p> <p>NMSP EAST (FT) N = 501956.01 E = 798404.55</p> <p>NOTE: LATITUDE AND LONGITUDE COORDINATES ARE SHOWN USING THE NORTH AMERICAN DATUM OF 1983 (NAD83). LISTED NEW MEXICO STATE PLANE EAST COORDINATES ARE GRID (NAD83). BASIS OF BEARING AND DISTANCES USED ARE NEW MEXICO STATE PLANE EAST COORDINATES MODIFIED TO THE SURFACE.</p> <p>SW CORNER SEC. 20 LAT. = 32.3699366°N LONG. = 103.5006503°W</p> <p>NMSP EAST (FT) N = 499314.79 E = 798421.43</p> <p>S89°33'31"W 2632.31 FT</p>		<p>N89°34'16"E 2639.79 FT</p> <p>N Q CORNER SEC. 20 LAT. = 32.3844466°N LONG. = 103.4920936°W</p> <p>NMSP EAST (FT) N = 504614.27 E = 801021.83</p> <p>NE CORNER SEC. 20 LAT. = 32.3844435°N LONG. = 103.4835441°W</p> <p>NMSP EAST (FT) N = 504634.03 E = 803661.09</p> <p>E Q CORNER SEC. 20 LAT. = 32.3771852°N LONG. = 103.4835548°W</p> <p>NMSP EAST (FT) N = 501993.36 E = 803678.74</p> <p>SE CORNER SEC. 20 LAT. = 32.3699343°N LONG. = 103.4836025°W</p> <p>NMSP EAST (FT) N = 499355.33 E = 803684.98</p> <p>S89°33'31"W 2632.31 FT</p>		<p>¹⁷ OPERATOR CERTIFICATION</p> <p>I hereby certify that the information contained herein is true and complete to the best of my knowledge and belief, and that this organization either owns a working interest or released mineral interest in the land including the proposed bottom hole location or has a right to drill this well at this location pursuant to a contract with an owner of such a mineral or working interest, or to a voluntary pooling agreement or a compulsory pooling order heretofore entered by the division.</p> <p><i>[Signature]</i> 6/5/2014 Signature Date</p> <p>David H. Cook Regulatory Specialist Printed Name</p> <p>david.cook@dvn.com E-mail Address</p> <p>¹⁸ SURVEYOR CERTIFICATION</p> <p>I hereby certify that the well location shown on this plat was plotted from field notes of actual surveys made by me or under my supervision, and that the same is true and correct to the best of my belief.</p> <p>DECEMBER 10 2013 MEXICO Date of Survey</p> <p><i>[Signature]</i> Signature and Seal of Professional Surveyor</p> <p>Certificate Number: 12797 SURVEY NO. 2024A</p>
---	--	---	--	--

DEC 11 2013

SECTION 20, TOWNSHIP 22 SOUTH, RANGE 34 EAST, N.M.P.M.
LEA COUNTY, STATE OF NEW MEXICO

SITE MAP

NOTE: LATITUDE AND LONGITUDE COORDINATES ARE SHOWN USING THE NORTH AMERICAN DATUM OF 1983 (NAD83). LISTED NEW MEXICO STATE PLANE EAST COORDINATES ARE GRID (NAD83). BASIS OF BEARING AND DISTANCES USED ARE NEW MEXICO STATE PLANE EAST COORDINATES MODIFIED TO THE SURFACE



0 10 50 100 200

SCALE 1" = 100'

DIRECTIONS TO LOCATION

FROM THE INTERSECTION OF STATE HIGHWAY 128 AND DELAWARE BASIN ROAD GO NORTH AND EAST ON DELAWARE BASIN ROAD APPROX. 9.5 MILES TO A LEASE ROAD ON LEFT (NORTH) TURN NORTH GO APPROX. 4.0 MILES, ROAD TURNS LEFT (WEST) GO WEST APPROX. 0.45 MILES TO A 4-WAY INTERSECTION, TURN RIGHT (NORTHEAST) GO APPROX. 0.67 MILES ON EPNG PIPELINE ROAD TO LEASE ROAD ON RIGHT (EAST) TURN EAST ON LEASE ROAD GO APPROX. 0.45 MILES TO "T" INTERSECTION, TURN RIGHT (SOUTH), LOCATION IS ON LEFT (EAST) 350'.

DEVON ENERGY PRODUCTION COMPANY, L.P.

GAUCHO UNIT #12H

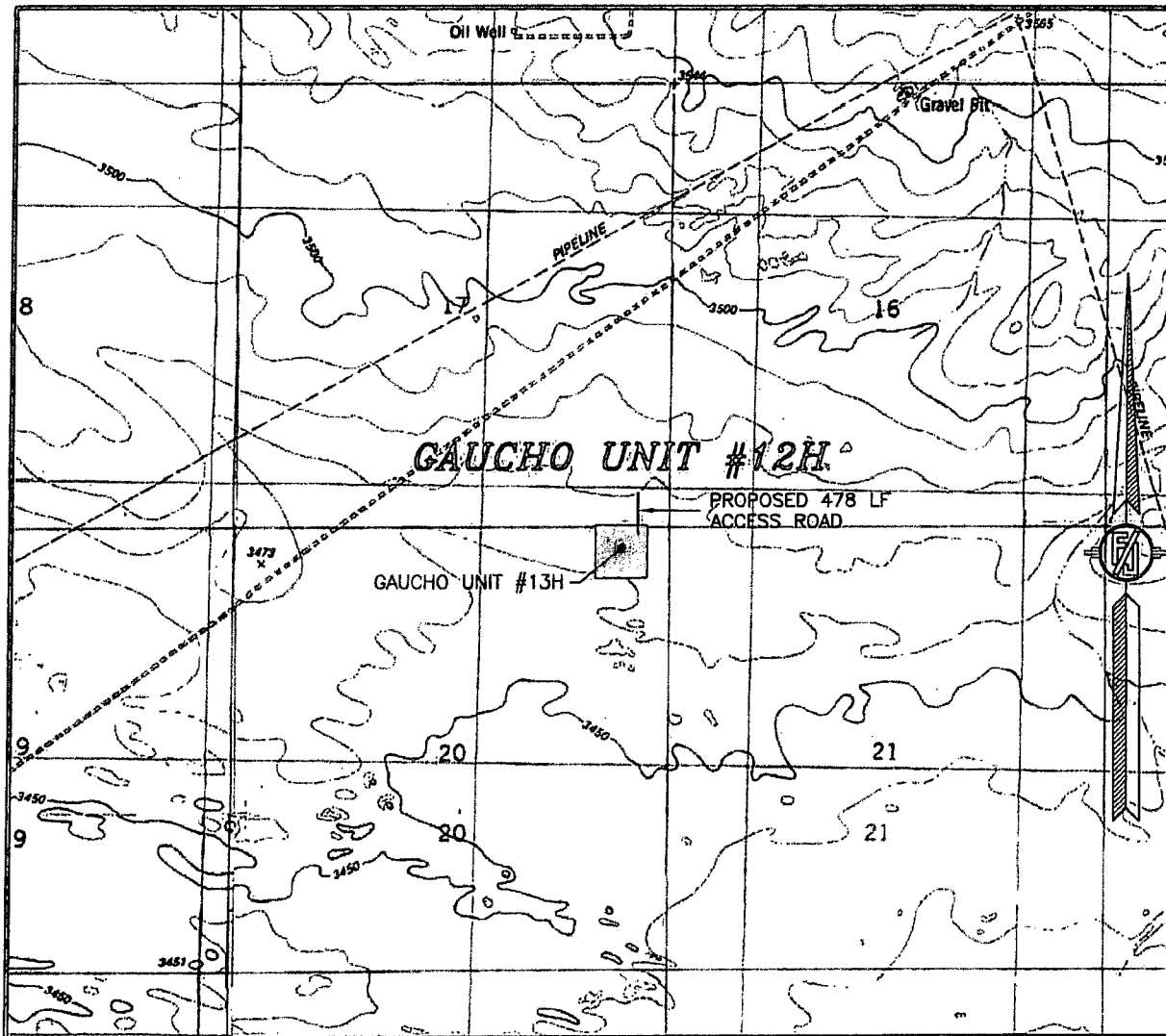
LOCATED 275 FT. FROM THE NORTH LINE
AND 575 FT. FROM THE EAST LINE OF
SECTION 20, TOWNSHIP 22 SOUTH,
RANGE 34 EAST, N.M.P.M.
LEA COUNTY, STATE OF NEW MEXICO

DECEMBER 10, 2013

SURVEY NO. 2024A

MADRON SURVEYING, INC. 301 SOUTH CANAL CARLSBAD, NEW MEXICO
(575) 234-3341

SECTION 20, TOWNSHIP 22 SOUTH, RANGE 34 EAST, N.M.P.M.
LEA COUNTY, STATE OF NEW MEXICO
LOCATION VERIFICATION MAP



USGS QUAD MAP:
SAN SIMON RANCH

NOT TO SCALE

DEVON ENERGY PRODUCTION COMPANY, L.P.
GAUCHO UNIT #12H

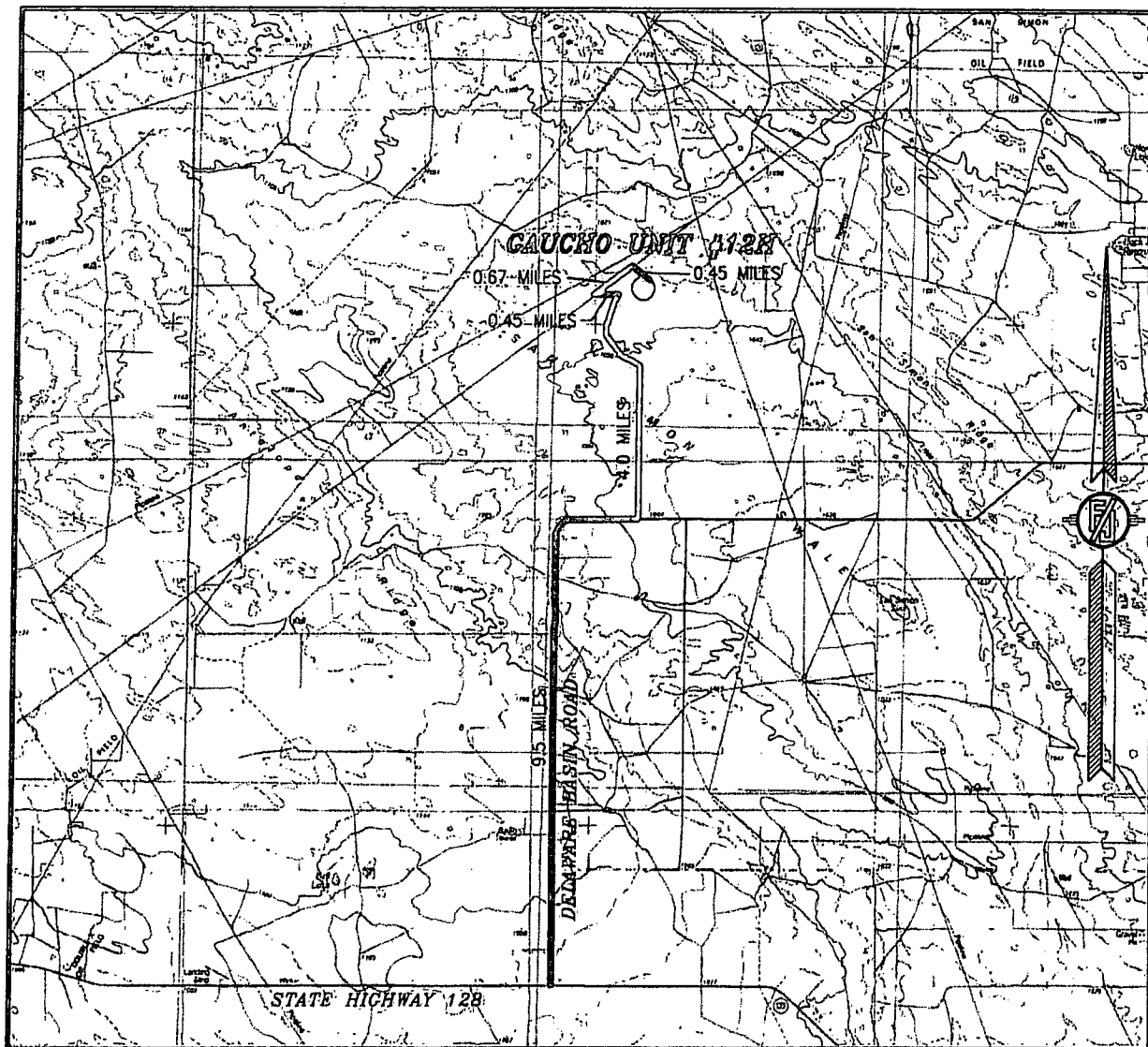
LOCATED 275 FT. FROM THE NORTH LINE
AND 575 FT. FROM THE EAST LINE OF
SECTION 20, TOWNSHIP 22 SOUTH,
RANGE 34 EAST, N.M.P.M.
LEA COUNTY, STATE OF NEW MEXICO

DECEMBER 10, 2013

SURVEY NO. 2024A

MADRON SURVEYING, INC. 301 SOUTH CANAL (575) 234-3341 CARLSBAD, NEW MEXICO

SECTION 20, TOWNSHIP 22 SOUTH, RANGE 34 EAST, N.M.P.M.
LEA COUNTY, STATE OF NEW MEXICO
VICINITY MAP



NOT TO SCALE

DEVON ENERGY PRODUCTION COMPANY, L.P.

CAUCHO UNIT #12H

LOCATED 275 FT. FROM THE NORTH LINE
AND 575 FT. FROM THE EAST LINE OF
SECTION 20, TOWNSHIP 22 SOUTH,
RANGE 34 EAST, N.M.P.M.
LEA COUNTY, STATE OF NEW MEXICO

DECEMBER 10, 2013

DIRECTIONS TO LOCATION

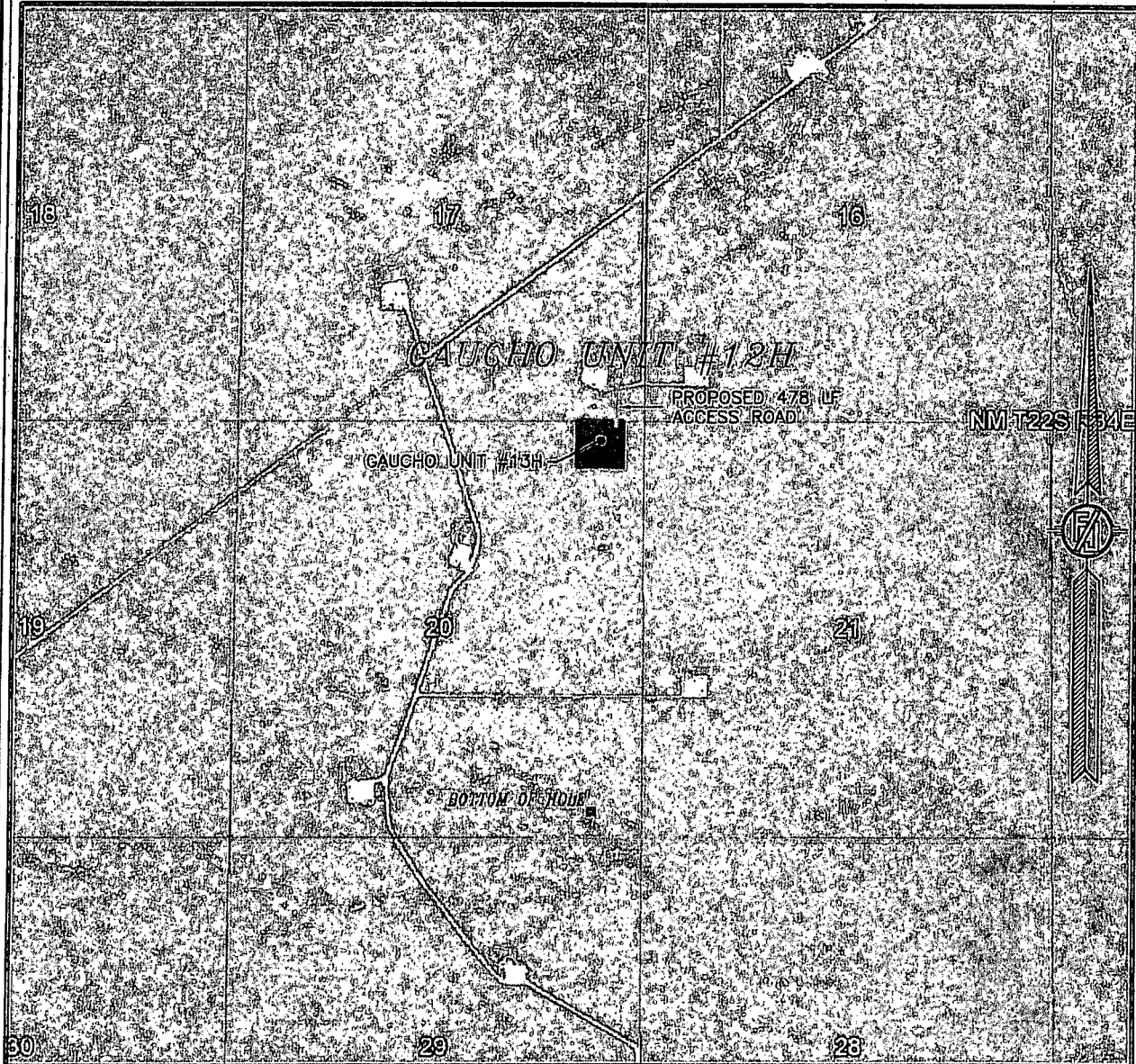
FROM THE INTERSECTION OF STATE HIGHWAY 128 AND DELAWARE
BASIN ROAD GO NORTH AND EAST ON DELAWARE BASIN ROAD
APPROX. 9.5 MILES TO A LEASE ROAD ON LEFT (NORTH) TURN
NORTH GO APPROX. 4.0 MILES, ROAD TURNS LEFT (WEST) GO WEST
APPROX. 0.45 MILES TO A 4-WAY INTERSECTION, TURN RIGHT
(NORTHEAST) GO APPROX. 0.67 MILES ON EPNG PIPELINE ROAD TO
LEASE ROAD ON RIGHT (EAST) TURN EAST ON LEASE ROAD GO
APPROX. 0.45 MILES TO "T" INTERSECTION, TURN RIGHT (SOUTH),
LOCATION IS ON LEFT (EAST) 350'.

SURVEY NO. 2024A

MADRON SURVEYING, INC. 301 SOUTH CANAL (575) 234-3341 CARLSBAD, NEW MEXICO

SECTION 20, TOWNSHIP 22 SOUTH, RANGE 34 EAST, N.M.P.M.
LEA COUNTY, STATE OF NEW MEXICO

AERIAL PHOTO



NOT TO SCALE
AERIAL PHOTO:
GOOGLE EARTH
MARCH 2012

DEVON ENERGY PRODUCTION COMPANY, L.P.

GAUCHO UNIT #12H

LOCATED 275 FT. FROM THE NORTH LINE
AND 575 FT. FROM THE EAST LINE OF
SECTION 20, TOWNSHIP 22 SOUTH,
RANGE 34 EAST, N.M.P.M.
LEA COUNTY, STATE OF NEW MEXICO

DECEMBER 10, 2013

SURVEY NO. 2024A

MADRON SURVEYING, INC. 301 SOUTH CANAL CARLSBAD, NEW MEXICO
(575) 234-3341