

District I
1625 N. French Dr., Hobbs, NM 88240
Phone: (575) 393-6161 Fax: (575) 393-0720
District II
811 S. Ficar St., Artesia, NM 88210
Phone: (575) 748-1283 Fax: (575) 748-9720
District III
1000 Rio Brazos Road, Artec, NM 87410
Phone: (505) 334-6178 Fax: (505) 334-6170
District IV
1220 S. St. Francis Dr., Santa Fe, NM 87505
Phone: (505) 476-3460 Fax: (505) 476-3462

State of New Mexico
Energy, Minerals & Natural Resources Department
OIL CONSERVATION DIVISION
1220 South St. Francis Dr.
Santa Fe, NM 87505

Form C-102
Revised August 1, 2011
Submit one copy to appropriate
District Office

☐ AMENDED REPORT

WELL LOCATION AND ACREAGE DEDICATION PLAT

¹ API Number 30-25-41853		² Pool Code 97922		³ Pool Name WC-025 G-06 S223421L; BONE SPRING	
⁴ Property Code 30863		⁵ Property Name GAUCHO UNIT			⁶ Well Number 16H
⁷ GRID No. 6137		⁸ Operator Name DEVON ENERGY PRODUCTION COMPANY, L.P.			⁹ Elevation 3444.1
¹⁰ Surface Location					
UL or lot no. P	Section 19	Township 22 S	Range 34 E	Lot Idn	Feet from the 200
				North/South line SOUTH	Feet from the 370
				East/West line EAST	County LEA
¹¹ Bottom Hole Location If Different From Surface					
UL or lot no. A	Section 19	Township 22 S	Range 34 E	Lot Idn	Feet from the 330
				North/South line NORTH	Feet from the 660
				East/West line EAST	County LEA
¹² Dedicated Acres 160		¹³ Joint or Infill		¹⁴ Consolidation Code	
				¹⁵ Order No.	

No allowable will be assigned to this completion until all interests have been consolidated or a non-standard unit has been approved by the division.

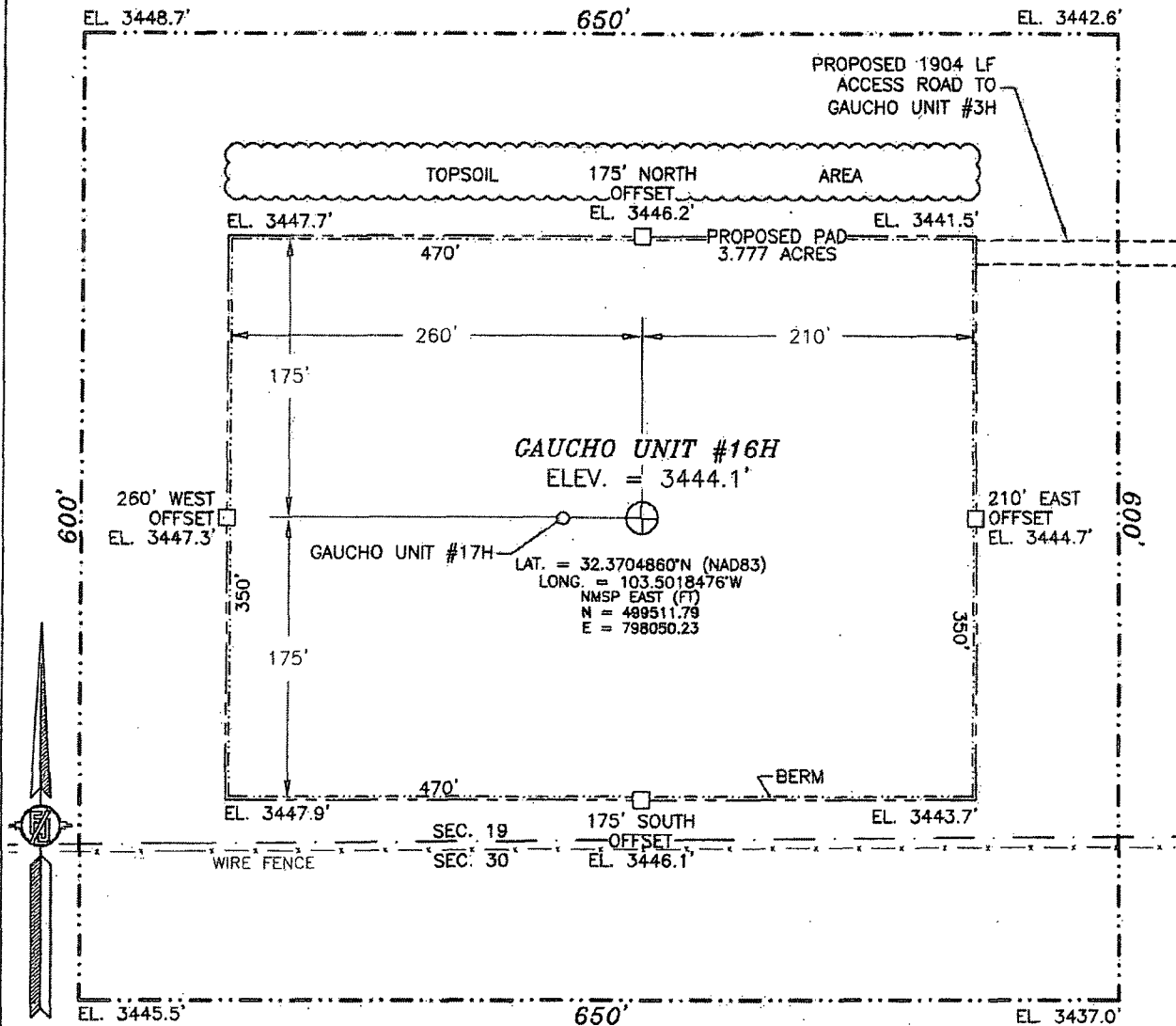
<p>N89°24'38"E 2619.32 FT</p> <p>NW CORNER SEC. 19 LAT. = 32.3844151°N LONG. = 103.5175867°W</p> <p>NMSP EAST (FT) N = 504541.86 E = 793151.52</p> <p>LOT 1</p> <p>LOT 2</p> <p>NOTE: LATITUDE AND LONGITUDE COORDINATES ARE SHOWN USING THE NORTH AMERICAN DATUM OF 1983 (NAD83). LISTED NEW MEXICO STATE PLANE EAST COORDINATES ARE GRID (NAD83). BASIS OF BEARING AND DISTANCES USED ARE NEW MEXICO STATE PLANE EAST COORDINATES MODIFIED TO THE SURFACE.</p> <p>LOT 3</p> <p>LOT 4</p> <p>SW CORNER SEC. 19 LAT. = 32.3699312°N LONG. = 103.5175204°W</p> <p>NMSP EAST (FT) N = 499272.72 E = 793212.80</p>		<p>N89°24'38"E 2619.32 FT</p> <p>NE CORNER SEC. 19 LAT. = 32.3844523°N LONG. = 103.5006223°W</p> <p>NMSP EAST (FT) N = 504595.75 E = 798388.98</p> <p>660'</p> <p>BOTTOM OF HOLE</p> <p>BOTTOM OF HOLE LAT. = 32.3835421°N LONG. = 103.5027659°W</p> <p>NMSP EAST (FT) N = 504259.48 E = 797729.82</p> <p>E O CORNER SEC. 19 LAT. = 32.3771965°N LONG. = 103.5006384°W</p> <p>NMSP EAST (FT) N = 501956.01 E = 798404.55</p> <p>GAUCHO UNIT #16H ELEV. = 3444.1 LAT. = 32.3704860°N (NAD83) LONG. = 103.5018478°W</p> <p>NMSP EAST (FT) N = 499511.79 E = 798050.23</p> <p>370'</p> <p>SURFACE LOCATION</p> <p>SE CORNER SEC. 19 LAT. = 32.3699366°N LONG. = 103.5006503°W</p> <p>NMSP EAST (FT) N = 499314.79 E = 798421.43</p>		<p>" OPERATOR CERTIFICATION</p> <p>I hereby certify that the information contained herein is true and complete to the best of my knowledge and belief, and that this organization either owns a working interest or unleased mineral interest in the land including the proposed bottom hole location or has a right to drill this well at this location pursuant to a contract with an owner of such a mineral or working interest, or to a voluntary pooling agreement or a compulsory pooling order heretofore entered by the Division.</p> <p>Signature: <i>[Signature]</i> Date: 5/21/2014</p> <p>David H. Cook Regulatory Specialist Printed Name</p> <p>david.cook@dmv.com E-mail Address</p> <p>" SURVEYOR CERTIFICATION</p> <p>I hereby certify that the well location shown on this plat was plotted from field notes of actual surveys made by me or under my supervision, and that the same is true and correct to the best of my belief.</p> <p>NOVEMBER 16, 2013</p> <p>Date of Survey</p> <p>Signature and Seal of Professional Surveyor: <i>[Signature]</i> Certificate Number: 12797 SURVEY NO: 2028A</p>
---	--	--	--	--

DEC 11 2014

SECTION 19, TOWNSHIP 22 SOUTH, RANGE 34 EAST, N.M.P.M.
LEA COUNTY, STATE OF NEW MEXICO

SITE MAP

NOTE: LATITUDE AND LONGITUDE COORDINATES ARE SHOWN USING THE NORTH AMERICAN DATUM OF 1983 (NAD83). LISTED NEW MEXICO STATE PLANE EAST COORDINATES ARE GRID (NAD83). BASIS OF BEARING AND DISTANCES USED ARE NEW MEXICO STATE PLANE EAST COORDINATES MODIFIED TO THE SURFACE.



010 50 100 200
SCALE 1" = 100'

DIRECTIONS TO LOCATION

FROM THE INTERSECTION OF SR 128 AND DELAWARE BASIN ROAD GO NORTH THEN EAST ON DELAWARE BASIN ROAD APPROX. 9.5 MILES TO A CALICHE LEASE ROAD ON LEFT, GO NORTH ABOUT 3.4 MILES TO AN EXISTING PAD ON LEFT (WEST) FOR GAUCHO UNIT #3. FROM ABOUT IN THE MIDDLE OF PAD ON SOUTH FOLLOW FLAGS WEST ABOUT 1900' TO NORTHEAST CORNER OF PROPOSED PAD.

DEVON ENERGY PRODUCTION COMPANY, L.P.

GAUCHO UNIT #16H

LOCATED 200 FT. FROM THE SOUTH LINE
AND 370 FT. FROM THE EAST LINE OF
SECTION 19, TOWNSHIP 22 SOUTH,
RANGE 34 EAST, N.M.P.M.

LEA COUNTY, STATE OF NEW MEXICO

NOVEMBER 16, 2013

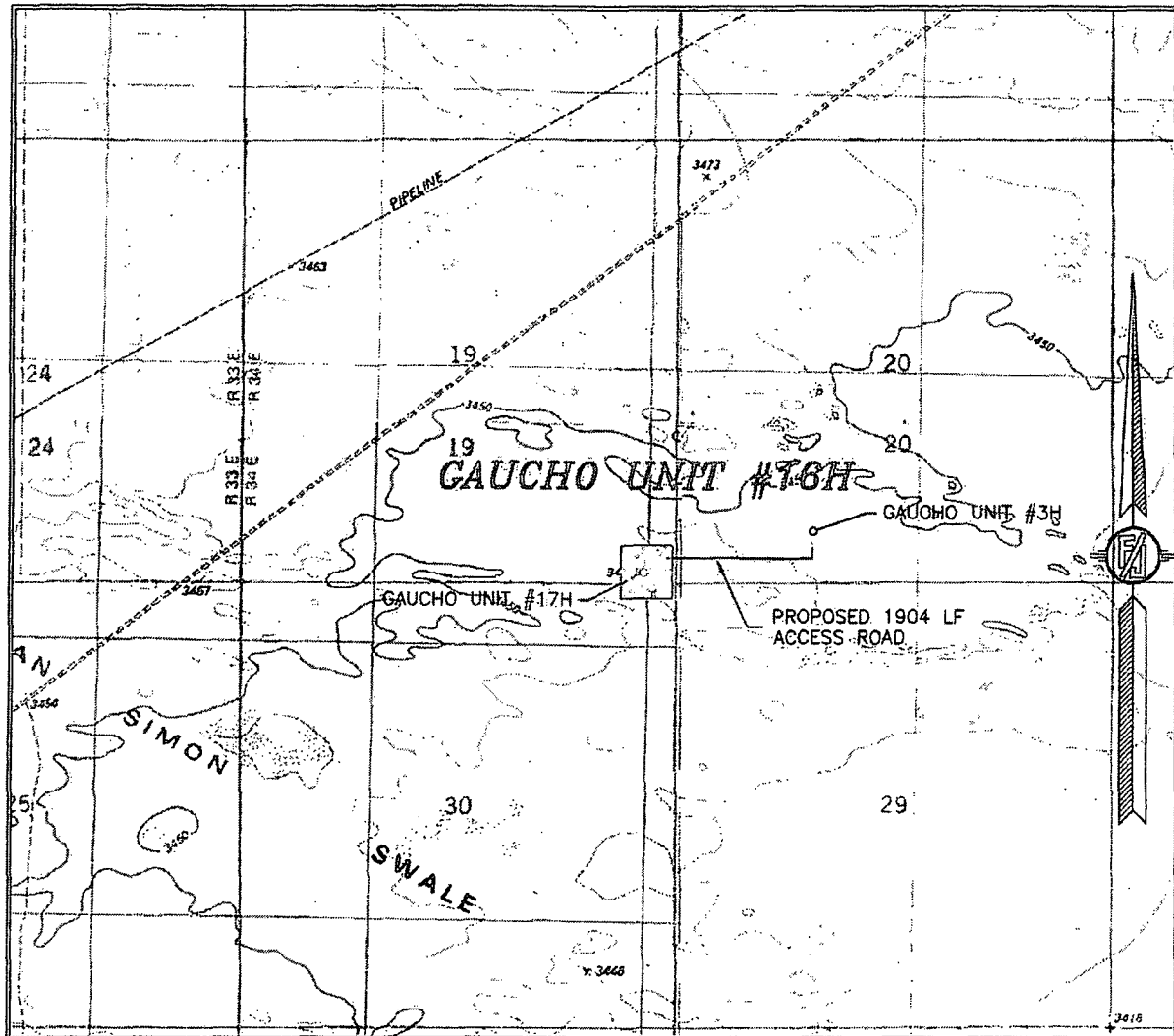
SURVEY NO. 2028A

MADRON SURVEYING, INC.

301 SOUTH CANAL
(575) 234-3341

CARLSBAD, NEW MEXICO

SECTION 19, TOWNSHIP 22 SOUTH, RANGE 34 EAST, N.M.P.M.
LEA COUNTY, STATE OF NEW MEXICO
LOCATION VERIFICATION MAP



USGS QUAD MAP:
TIP TOP WELLS

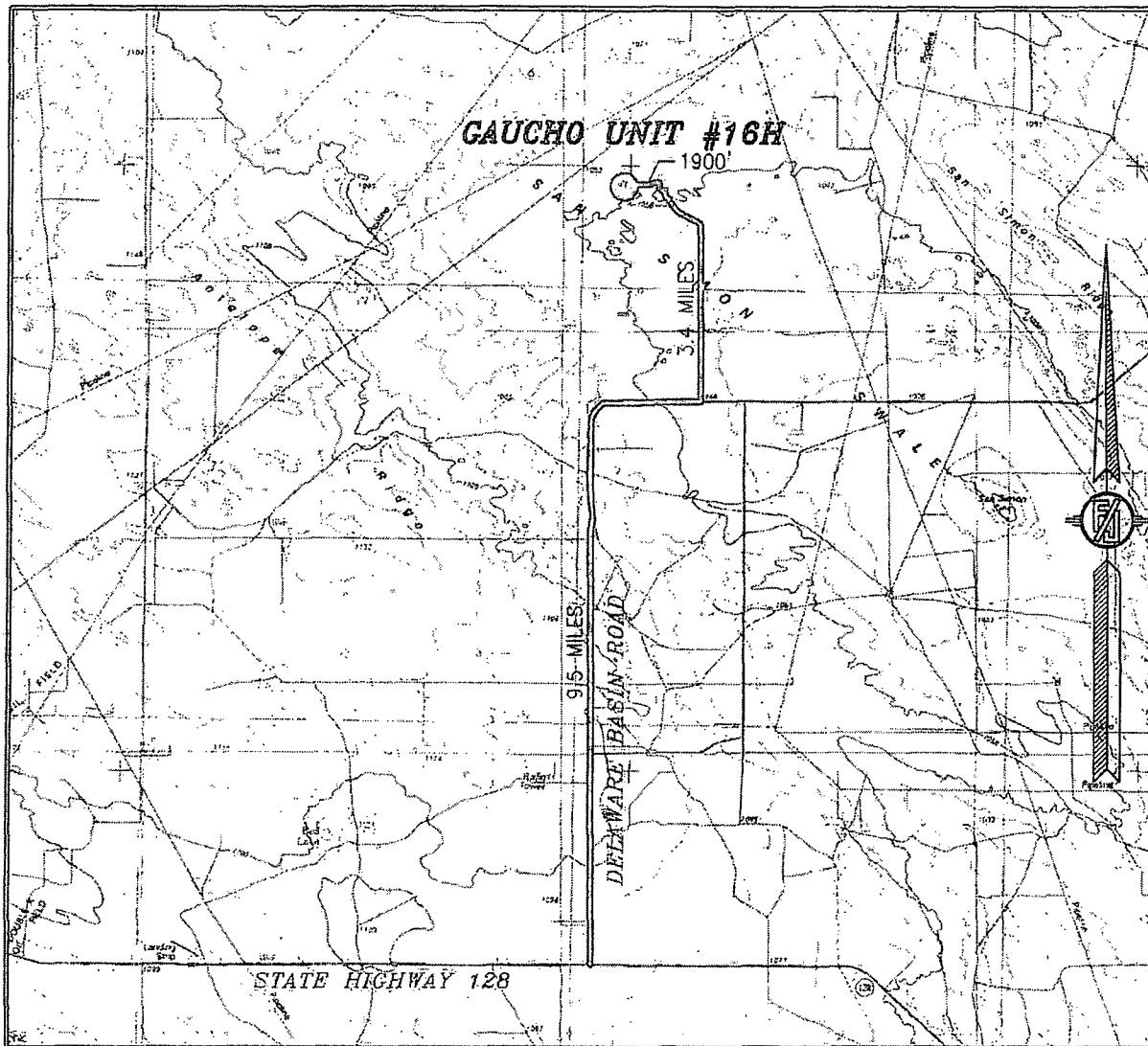
NOT TO SCALE

DEVON ENERGY PRODUCTION COMPANY, L.P.
GAUCHITO UNIT #16H
LOCATED 200 FT. FROM THE SOUTH LINE
AND 370 FT. FROM THE EAST LINE OF
SECTION 19, TOWNSHIP 22 SOUTH,
RANGE 34 EAST, N.M.P.M.
LEA COUNTY, STATE OF NEW MEXICO

NOVEMBER 16, 2013

MADRON SURVEYING, INC. 301 SOUTH CANAL (575) 234-3341 CARLSBAD, NEW MEXICO SURVEY NO. 2028A

SECTION 19, TOWNSHIP 22 SOUTH, RANGE 34 EAST, N.M.P.M.
LEA COUNTY, STATE OF NEW MEXICO
VICINITY MAP



NOT TO SCALE

DEVON ENERGY PRODUCTION COMPANY, L.P.

GAUCHO UNIT #16H

LOCATED 200 FT. FROM THE SOUTH LINE
AND 370 FT. FROM THE EAST LINE OF
SECTION 19, TOWNSHIP 22 SOUTH,
RANGE 34 EAST, N.M.P.M.
LEA COUNTY, STATE OF NEW MEXICO

NOVEMBER 16, 2013

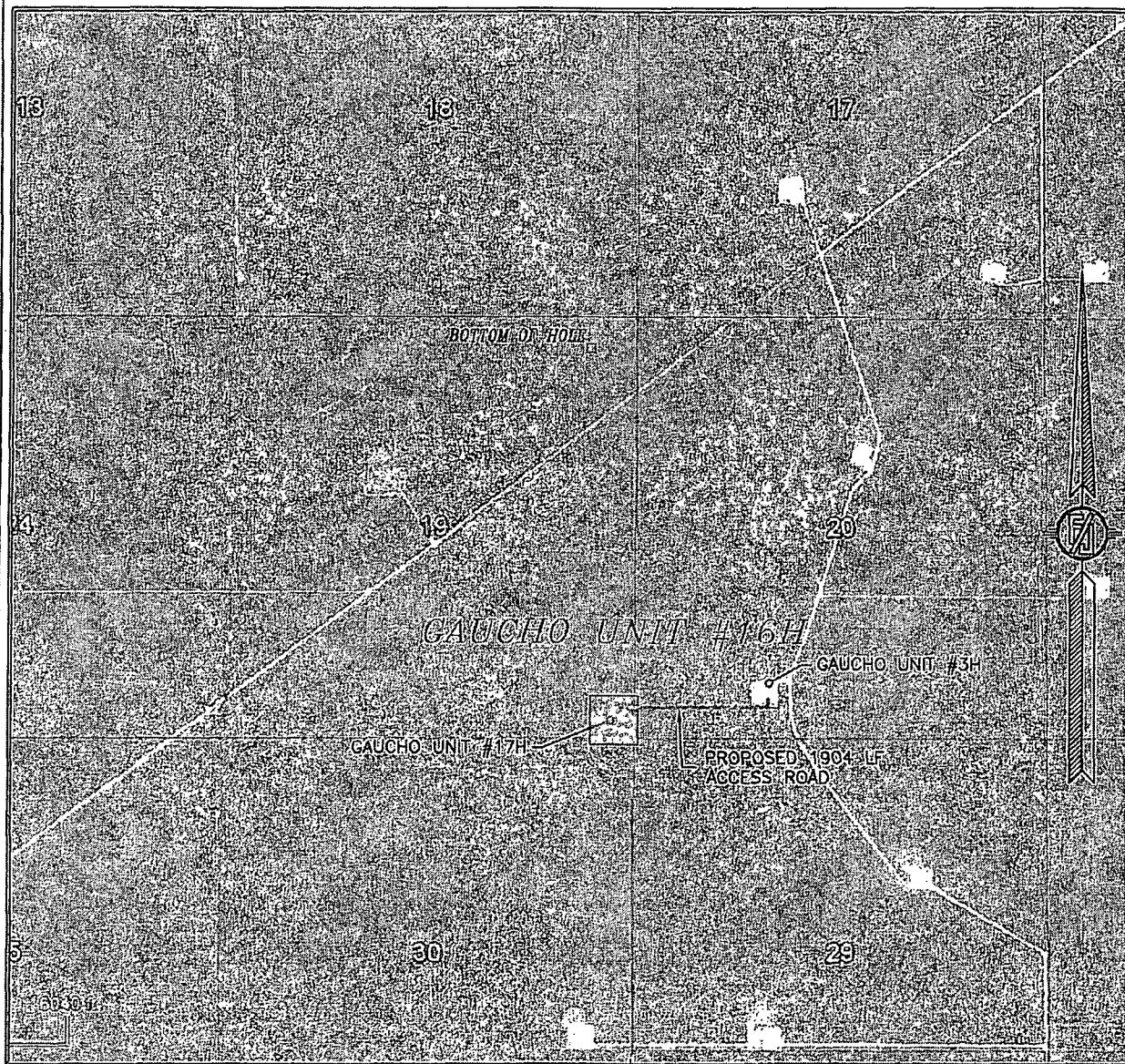
DIRECTIONS TO LOCATION

FROM THE INTERSECTION OF SR 128 AND DELAWARE BASIN ROAD GO
NORTH THEN EAST ON DELAWARE BASIN ROAD APPROX. 9.5 MILES TO
A CALICHE LEASE ROAD ON LEFT, GO NORTH ABOUT 3.4 MILES TO
AN EXISTING PAD ON LEFT (WEST) FOR GAUCHO UNIT #3. FROM
ABOUT IN THE MIDDLE OF PAD ON SOUTH FOLLOW FLAGS WEST
ABOUT 1900' TO NORTHEAST CORNER OF PROPOSED PAD.

MADRON SURVEYING, INC. 301 SOUTH CANAL (575) 234-3341

SURVEY NO. 2028A
CARLSBAD, NEW MEXICO

SECTION 19, TOWNSHIP 22 SOUTH, RANGE 34 EAST, N.M.P.M.
LEA COUNTY, STATE OF NEW MEXICO
AERIAL PHOTO



NOT TO SCALE
AERIAL PHOTO:
GOOGLE EARTH
MARCH 2012

DEVON ENERGY PRODUCTION COMPANY, L.P.

GAUCHO UNIT #16H

LOCATED 200 FT. FROM THE SOUTH LINE
AND 370 FT. FROM THE EAST LINE OF
SECTION 19, TOWNSHIP 22 SOUTH,
RANGE 34 EAST, N.M.P.M.
LEA COUNTY, STATE OF NEW MEXICO

NOVEMBER 16, 2013

SURVEY NO. 2028A

MADRON SURVEYING, INC. 301 SOUTH CANAL (575) 234-3341 CARLSBAD, NEW MEXICO