

District I
1625 N. French Dr., Hobbs, NM 88240
Phone: (575) 393-6161 Fax: (575) 393-0720
District II
811 S. First St., Artesia, NM 88210
Phone: (575) 748-1283 Fax: (575) 334-6170
District III
1000 Rio Brazos Road, Aztec, NM 87410
Phone: (505) 334-6178 Fax: (505) 334-6170
District IV
1220 S. St. Francis Dr., Santa Fe, NM 87505
Phone: (505) 476-3460 Fax: (505) 476-3462

State of New Mexico
Energy, Minerals & Natural Resources Department
OIL CONSERVATION DIVISION
1220 South St. Francis Dr.
Santa Fe, NM 87505

HOBBS OGD

DEC 12 2014

RECEIVED

Form C-102
Revised August 1, 2011
Submit one copy to appropriate
District Office

☐ AMENDED REPORT

WELL LOCATION AND ACREAGE DEDICATION PLAT

¹ API Number 30-025-42337		² Pool Code 97438		³ Pool Name Shoe Bar East, Devonian, Southeast	
⁴ Property Code 313979		⁵ Property Name CERES 8 STATE			⁶ Well Number 1
⁷ OGRID No. 113315		⁸ Operator Name TEXLAND PETROLEUM, LP			⁹ Elevation 3891

¹⁰ Surface Location

UL or lot no.	Section	Township	Range	Lot Idn	Feet from the	North/South line	Feet from the	East/West line	County
B	8	T-17-S	R-36-E	2	330'	NORTH	1784'	EAST	LEA

¹¹ Bottom Hole Location If Different From Surface

UL or lot no.	Section	Township	Range	Lot Idn	Feet from the	North/South line	Feet from the	East/West line	County

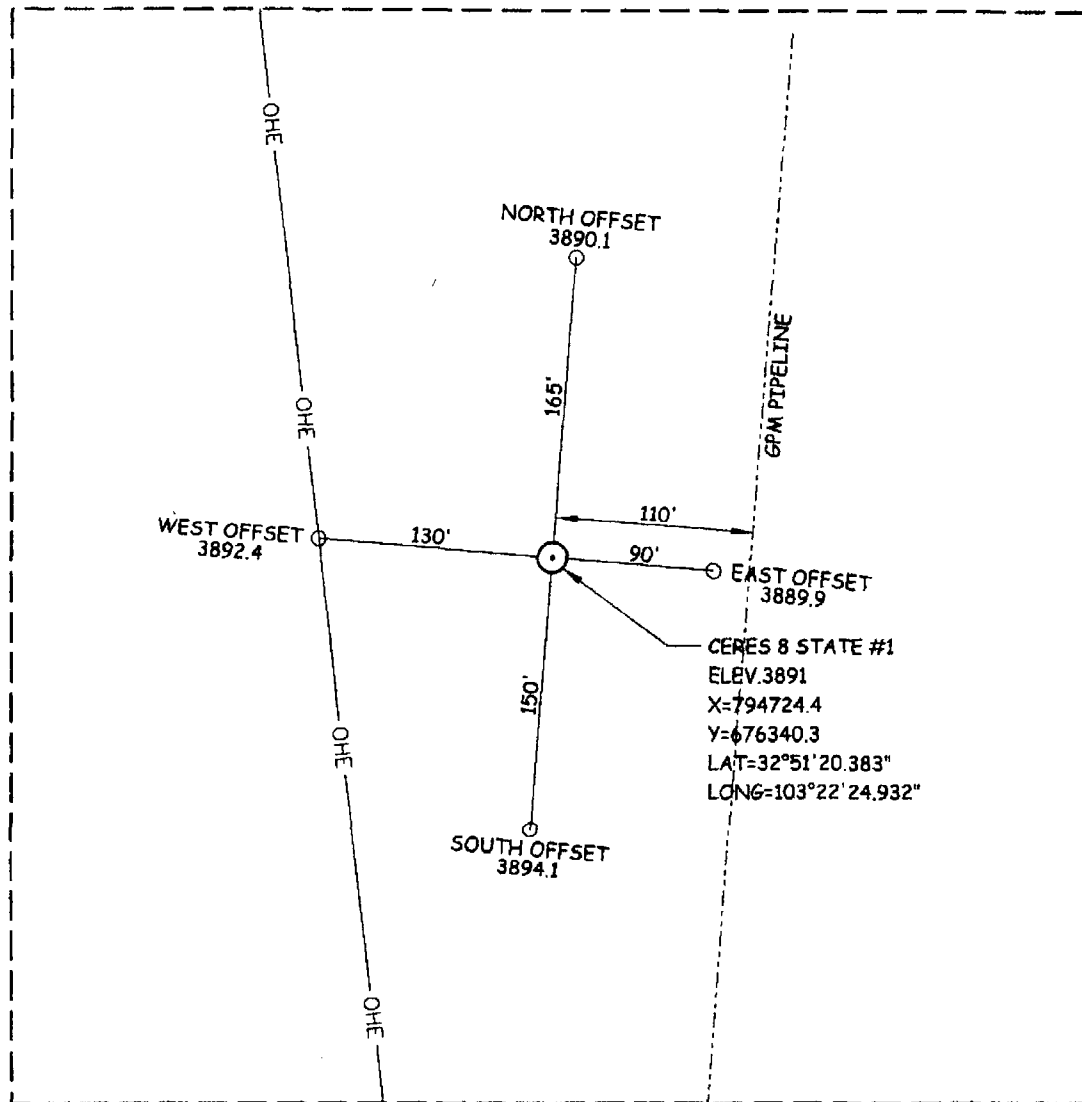
¹² Dedicated Acres 8040	¹³ Joint or Infill	¹⁴ Consolidation Code	¹⁵ Order No.
---------------------------------------	-------------------------------	----------------------------------	-------------------------

No allowable will be assigned to this completion until all interests have been consolidated or a non-standard unit has been approved by the division.

<p>CERES 8 STATE No.1 ELEV=3891 X=794724.4 Y=676340.3 LAT=32°51'20.383" LONG=103°22'24.932"</p>	<p>¹⁷ OPERATOR CERTIFICATION I hereby certify that the information contained herein is true and complete to the best of my knowledge and belief, and that this organization either owns a working interest or unleased mineral interest in the land including the proposed bottom hole location or has a right to drill this well at this location pursuant to a contract with an owner of such a mineral or working interest, or to a voluntary pooling agreement or a compulsory pooling order heretofore entered by the division.</p> <p>Vickie Smith 12-11-14 Signature Date</p> <p>Vickie Smith Printed Name</p> <p>Vsmith@texpetro.com E-mail Address</p>	
	<p>"SURVEYOR CERTIFICATION I hereby certify that the well location shown on this plat was plotted from field notes of actual surveys made by me or under my supervision, and that the same is true and correct to the best of my belief.</p> <p>November 25, 2014 Date of Survey</p> <p>Signature and Seal of Professional Surveyor Jesse M. Martin Certificate Number 7911 66-478 PG. 69-700 PROFESSIONAL LAND SURVEYOR 37,911</p>	
	<p>SECTION 8</p>	
	<p>HORIZONTAL-NAD27 NEW MEXICO EAST VERTICAL-NGVD29</p>	

DEC 15 2014

SECTION 8, TOWNSHIP 17 SOUTH, RANGE 36 EAST, N.M.P.M.
LEA COUNTY, NEW MEXICO



DIRECTIONS TO LOCATION
FROM THE CENTER OF LOVINGTON, NEW MEXICO
TRAVEL SOUTH ALONG STATE HWY. 483 APPROX.
6.0 MILES. TURN RIGHT ON CO. RD. 78 AND GO
WEST APPROX. 1.34 MILES, LOCATION IS 330' SOUTH.

CERES 8 STATE #1
LOCATED 330 FEET FROM THE NORTH LINE
AND 1784 FEET FROM THE EAST LINE OF
SECTION 8, TOWNSHIP 17 SOUTH, RANGE
36 EAST, N.M.P.M.,
LEA COUNTY, NEW MEXICO

SCALE: 1" = 100'	REVISION:	PLAT DATE: 11-24-14
CLIENT: TEXLAND PETROLEUM, LP		
DRAWN BY: B. BURROW	SURVEY DATE: 11-21-14	
SURVEYED BY: J.M. MARTIN	FIELD BOOK: 478, PG. 69-70	
FILE: LOVE.dgn	FILE NO. 37,911	SHEET NO. 1

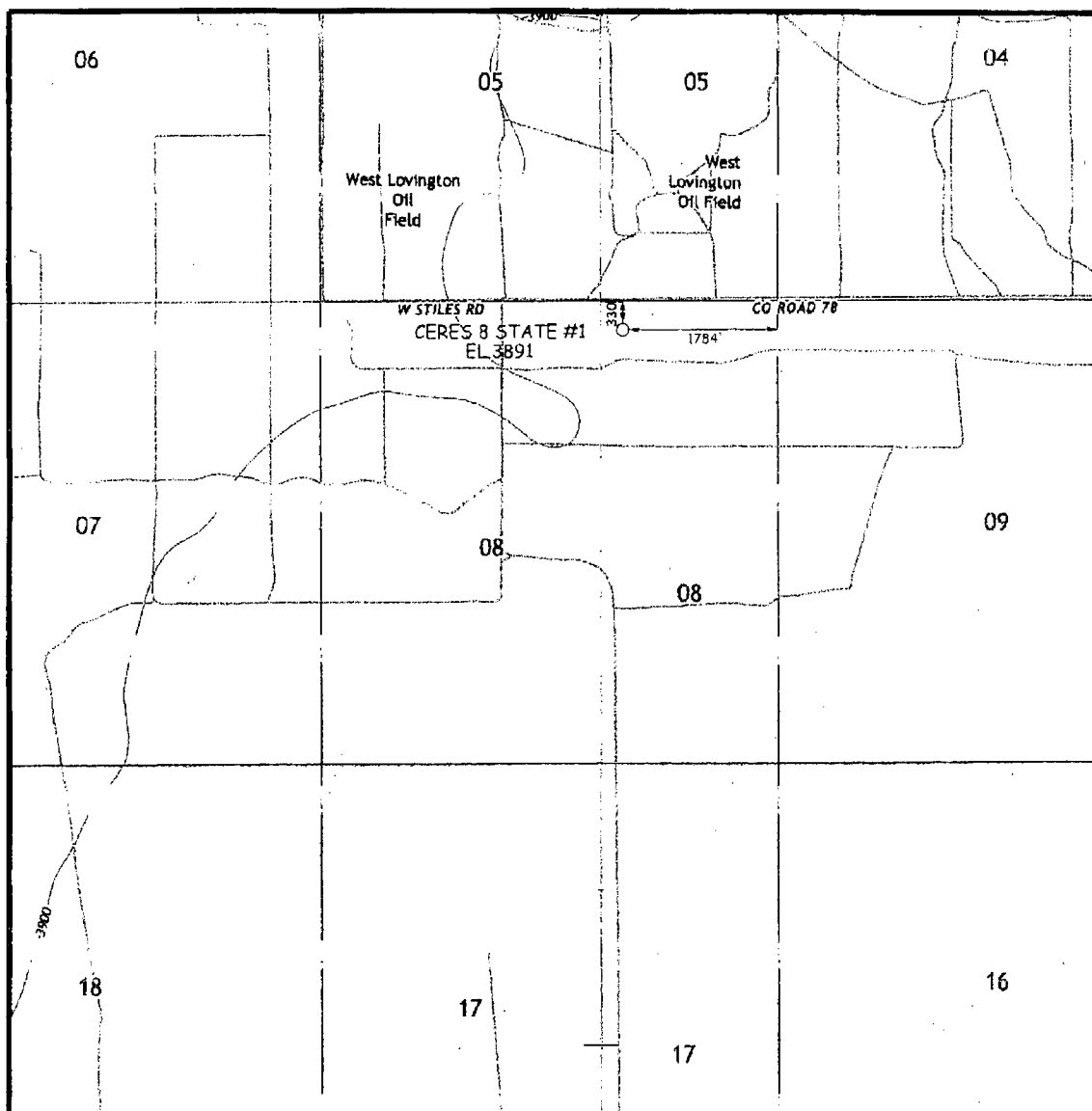


WILSON SURVEYING Co., INC.
Registered Professional Land Surveyors

3330 - 70th Street, Suite 201 - Lubbock, Texas 79413
Office 806.792.4731 Fax 806.792.8446



LOCATION VERIFICATION MAP



Operator: TEXLAND PETROLEUM, L.P. Lease: CERES 8 STATE #1

Description 330 FEET FROM THE NORTH LINE AND 1784 FEET FROM THE EAST LINE

Section	Township	Range	Survey	County
8	17-S	36-E	N.M.P.M.	LEA



WILSON SURVEYING Co., INC.

Registered Professional Land Surveyors
Global Positioning System Surveyors

3330 70th ST., SUITE 201 • LUBBOCK, TX. 79413
(806) 792-4731 • FAX (806) 792-1646

