

DISTRICT I
1825 N. FRENCH DR., HOBBS, NM 88240
Phone: (575) 393-8161 Fax: (575) 393-0720

DISTRICT II
1301 W. GRAND AVENUE, ARTESIA, NM 88210
Phone: (575) 748-1283 Fax: (575) 748-9720

DISTRICT III
1000 RIO BRAZOS RD., AZTEC, NM 87410
Phone: (505) 334-8178 Fax: (505) 334-8170

DISTRICT IV
11885 S. ST. FRANCIS DR., SANTA FE, NM 87505
Phone: (505) 476-3460 Fax: (505) 476-3462

State of New Mexico
Energy, Minerals & Natural Resources Department
OIL CONSERVATION DIVISION
11885 SOUTH ST. FRANCIS DR.
Santa Fe, New Mexico 87505

HOBBS

Form C-102

Revised August 1, 2011

Submit one copy to appropriate

DEC 12 2013

RECEIVED ☐ AMENDED REPORT

WELL LOCATION AND ACREAGE DEDICATION PLAT

API Number 30-025-42338	Pool Code 97983	Pool Name WC-025 G-07 S203506D; BONE SPRING
Property Code 313978	Property Name BLUE JAY FEDERAL	Well Number 1H
OGRID No. 229137	Operator Name COG OPERATING, LLC	Elevation 3671.8

Surface Location

UL or lot No.	Section	Township	Range	Lot Idn	Feet from the	North/South line	Feet from the	East/West line	County
0	18	20-S	35-E		190	SOUTH	2310	EAST	LEA

Bottom Hole Location If Different From Surface

UL or lot No.	Section	Township	Range	Lot Idn	Feet from the	North/South line	Feet from the	East/West line	County
B	18	20-S	35-E		330	NORTH	2260	EAST	LEA

Dedicated Acres	Joint or Infill	Consolidation Code	Order No.
160			

NO ALLOWABLE WILL BE ASSIGNED TO THIS COMPLETION UNTIL ALL INTERESTS HAVE BEEN CONSOLIDATED
OR A NON-STANDARD UNIT HAS BEEN APPROVED BY THE DIVISION

LOT 1 39.88 Ac	LOT 2 39.92 Ac	LOT 3 39.92 Ac	LOT 4 39.97 Ac
<p>Y=575832.6 N X=757887.6 E</p> <p>Y=575851.2 N X=759207.6 E</p> <p>NAD 27 PROPOSED BOTTOM HOLE LOCATION Y=575508.0 N X=758271.0 E LAT.=32.579380° N LONG.=103.494884° W</p> <p>NAD 27 SURFACE LOCATION Y=570747.0 N X=758261.0 E LAT.=32.566295° N LONG.=103.495039° W</p> <p>Y=570553.2 N X=757932.5 E</p> <p>Y=570568.5 N X=759252.4 E</p> <p>GRID AZ. = 00°07'13" HORZ. DIST. = 4761.0</p> <p>NMNM119759</p> <p>B.H.</p> <p>S.L.</p> <p>330'</p> <p>2260'</p> <p>2310'</p> <p>190'</p>			

OPERATOR CERTIFICATION

I hereby certify that the information herein is true and complete to the best of my knowledge and belief, and that this organization either owns a working interest or unleased mineral interest in the land including the proposed bottom hole location or has a right to drill this well at this location pursuant to a contract with an owner of such mineral or working interest, or to a voluntary pooling agreement or a compulsory pooling order heretofore entered by the division.

Signature Melanie J Parker Date 5/14/14

Printed Name
Melanie J Parker

E-mail Address
mparker@concho.com

SURVEYOR CERTIFICATION

I hereby certify that the well location shown on this plat was plotted from field notes of actual surveys made by me or under my supervision, and that the same is true and correct to the best of my belief.

MAY 7, 2013

Date of Survey

Signature & Seal of Professional Surveyor

CHAD L. HARCROW
NEW MEXICO
17777
LICENSED PROFESSIONAL SURVEYOR

Chad Harcrow 5/29/13

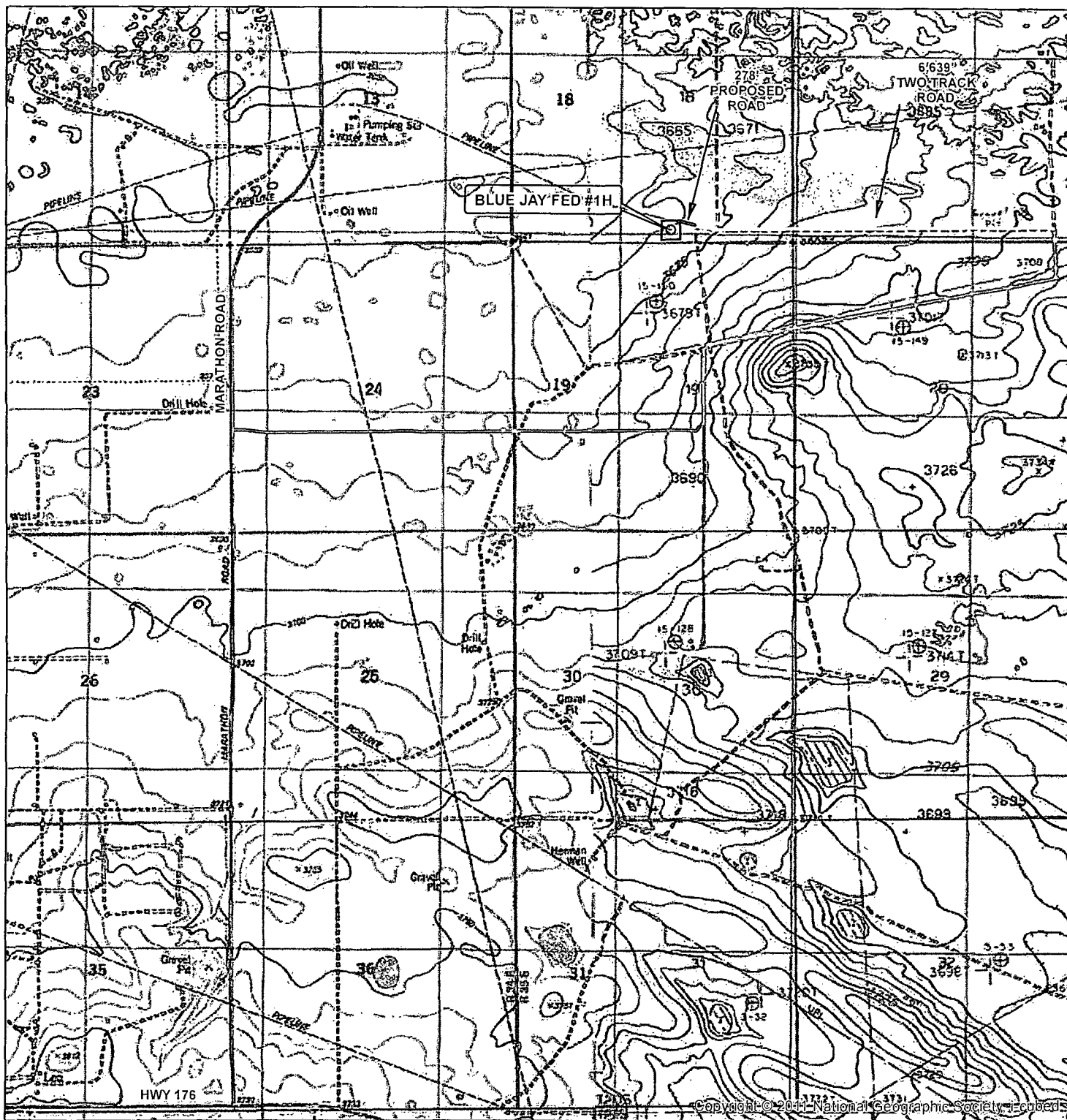
Certificate No. CHAD HARCROW 17777

W.O. # 13-237 DRAWN BY: VD

DEC 15 2014

EXHIBIT 2

LOCATION VERIFICATION MAP



SEC. 18, TWP. 20S, RGE. 35E
 SURVEY: N.M.P.M
 COUNTY: LEA STATE: NEW MEXICO
 DESCRIPTION: BLUE JAY FED #1H
 190' FSL, 2310' FEL

ELEVATION: 3671.8'
 OPERATOR: COG OPERATING LLC
 LEASE: BLUE JAY FED

W.O. # 13-551

○ WELL
 □ WELL PAD
 — MAIN ROAD
 — PROPOSED ROAD
 — TWO TRACK ROAD

1 IN = 2,500 FT

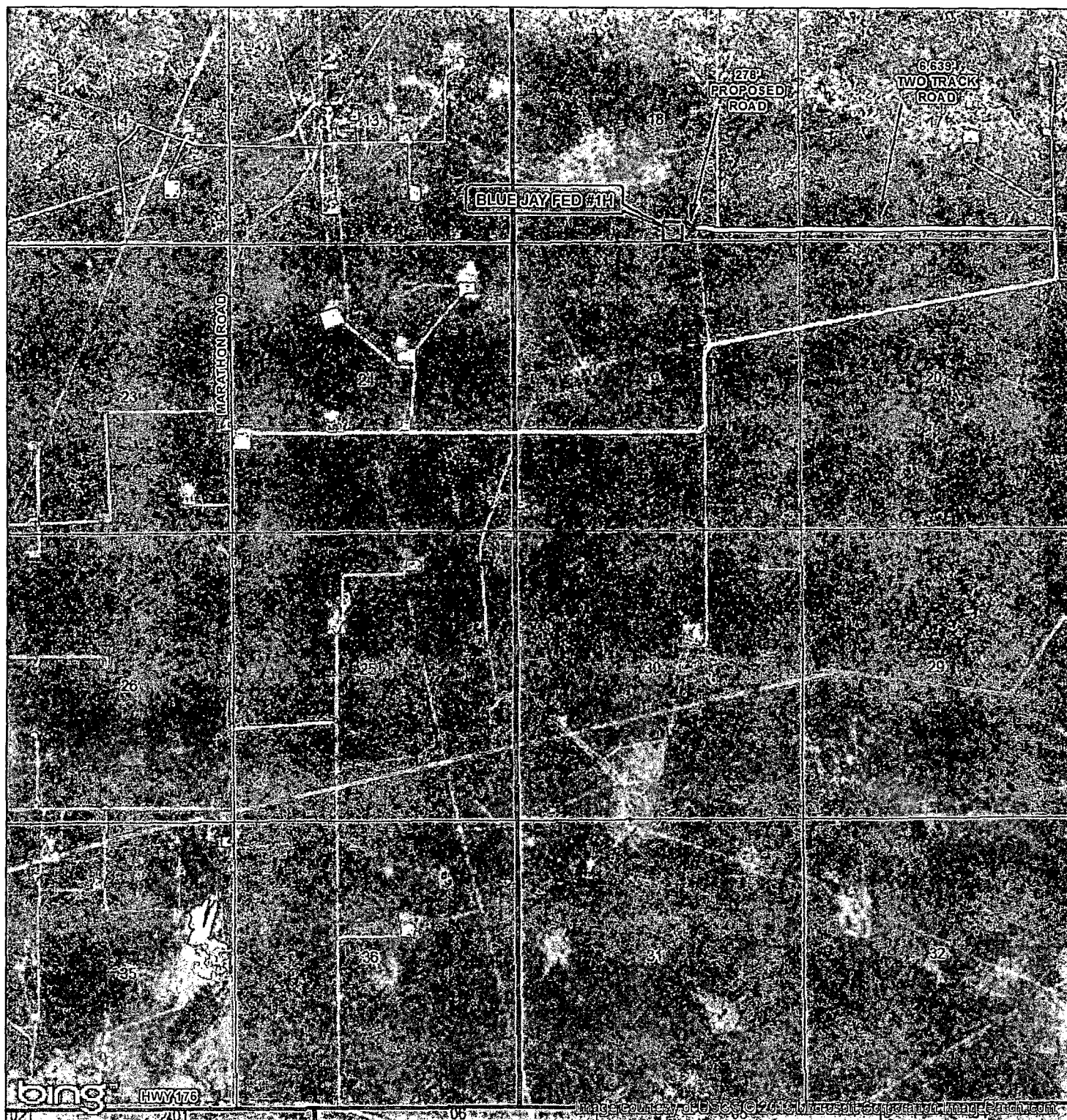
0 2,000 4,000 FEET
 0 0.5 1 MILES

HARCROW SURVEYING, LLC
 1107 WATSON, ARTESIA N.M. 88210
 PH: (575) 513-2570 FAX: (575) 746-2158
 chad_harcrow77@yahoo.com



MAP DATE: 8/14/2013

LOCATION VERIFICATION MAP



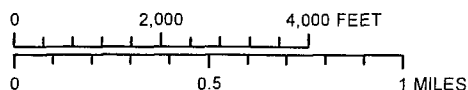
SEC. 18, TWP. 20S, RGE. 35E
 SURVEY: N.M.P.M
 COUNTY: LEA STATE: NEW MEXICO
 DESCRIPTION: BLUE JAY FED #1H
 190' FSL, 2310' FEL

ELEVATION: 3671.8'
 OPERATOR: COG OPERATING LLC
 LEASE: BLUE JAY FED

W.O. # 13-551

- WELL
- WELL PAD
- MAIN ROAD
- PROPOSED ROAD
- ... TWO TRACK ROAD

1 IN = 2,500 FT

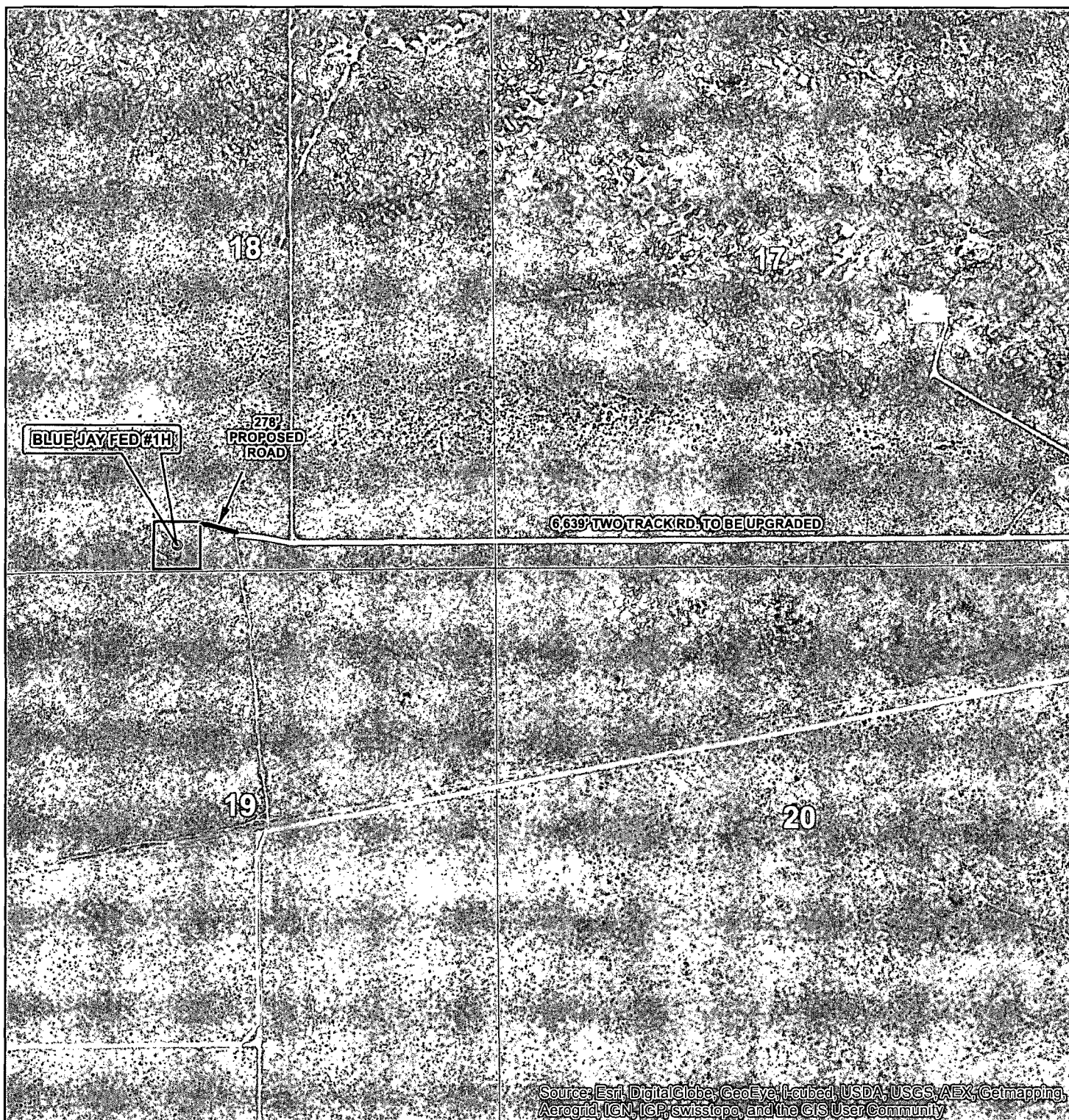


HARCROW SURVEYING, LLC
 1107 WATSON, ARTESIA N.M. 88210
 PH: (575) 513-2570 FAX: (575) 746-2158
 chad_harcrow77@yahoo.com



MAP DATE: 8/14/2013

LOCATION VERIFICATION MAP



Source: Esri, DigitalGlobe, GeoEye, Icarub, USDA, USGS, AEX, Getmapping, Aerogrid, IGN, ICP, swisstopo, and the GIS User Community

SEC. 18, TWP. 20S, RGE. 35E
 SURVEY: N.M.P.M
 COUNTY: LEA STATE: NEW MEXICO
 DESCRIPTION: BLUE JAY FED #1H
 190' FSL, 2310' FEL

ELEVATION: 3671.8'
 OPERATOR: COG OPERATING LLC
 LEASE: BLUE JAY FED

W.O. # 13-551



1 IN = 1,000 FT

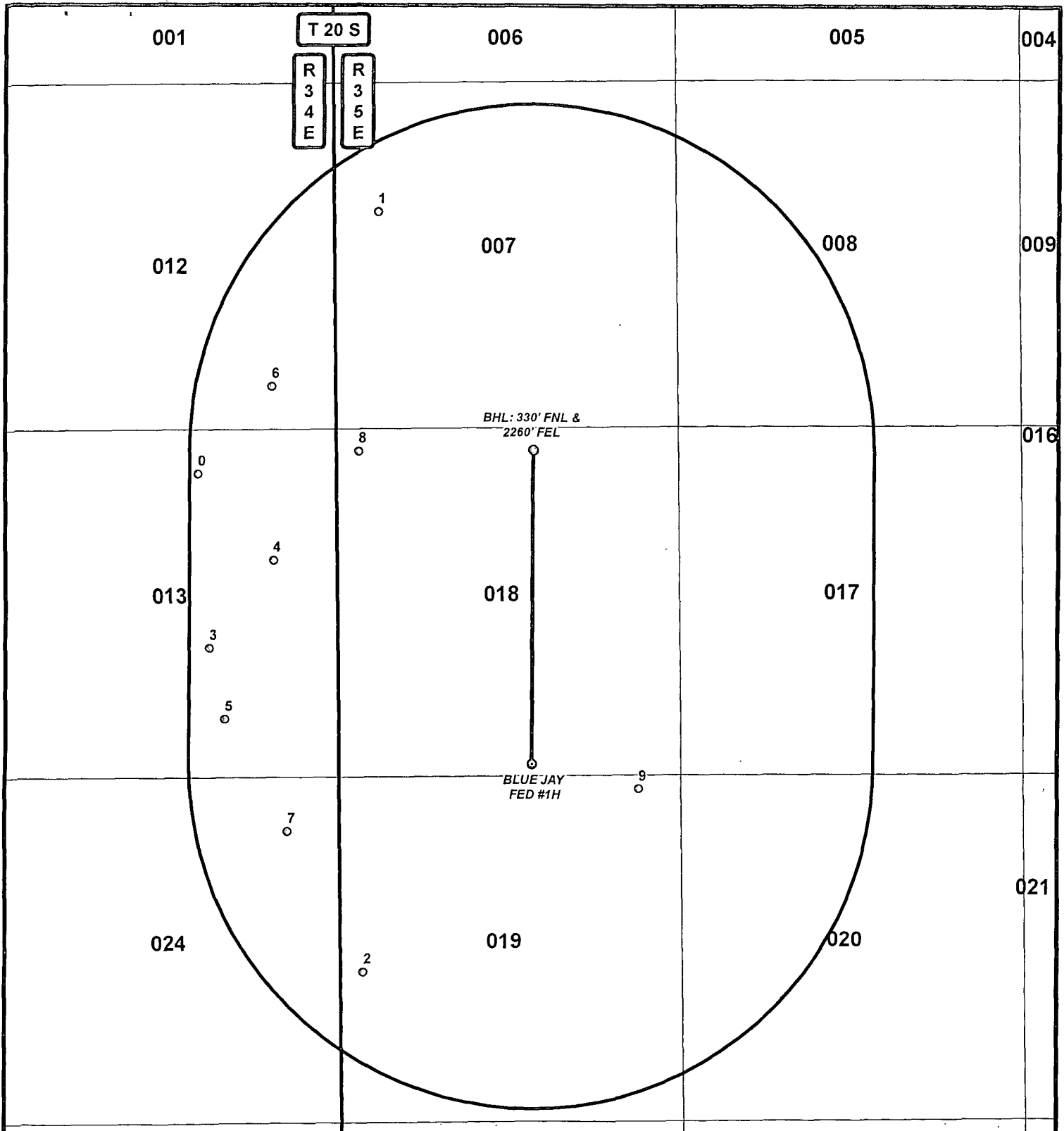
0 2,000 FEET

- WELL
- WELL PAD
- MAIN ROAD
- PROPOSED ROAD
- TWO TRACK ROAD

HARCROW SURVEYING, LLC
 1107 WATSON, ARTESIA N.M. 88210
 PH: (575) 513-2570 FAX: (575) 746-2158
 chad_harcrow77@yahoo.com



MAP DATE: 8/14/2013



DATA FOR "WELLS WITHIN 1 MI." IS TAKEN FROM THE NEW MEXICO EMNRD WEBSITE. THE DATA HAS BEEN UPDATED THROUGH APRIL 13, 2014.

LEGEND

- WELL
- BOTTOMHOLE
- WELLS WITHIN 1 MI.
- 1 MI. BUFFER

BLUE JAY FEDERAL #1H

SEC: 18 TWP: 20 S. RGE: 35 E. ELEVATION: 3671.8'
 STATE: NEW MEXICO COUNTY: LEA 190' FSL & 2310' FEL
 W.O. # 14-406 LEASE: BLUE JAY FED SURVEY: N.M.P.M

0 2,500 5,000 FEET

0 0.125 0.25 0.5 Miles 1 IN = 2,000 FT

1 MILE MAP

05/13/2014

S.P.

CONCHO
 COG OPERATING, LLC

HARCROW SURVEYING, LLC.
 2314 W. MAIN ST, ARTESIA, NM 88210
 PH: (575) 513-2570 FAX: (575) 746-2158
 chad_harcrow77@yahoo.com

FID	OPERATOR	WELL_NAME	LATITUDE	LONGITUDE	API	SECTION	TOWNSHIP	RANGE	FTG_NS	NS_CD	FTG_EW	EW_CD	TVD_DEPTH	COMPL_STAT
0	LEGACY RESERVES OPERATING, LP	LEA UNIT 009	32.578604	-103.512151	3002502432	13	20.0S	34E	660 N		2130 E		14408	Active
1	SINCLAIR OIL & GAS COMPANY	LEA FEDERAL 001	32.58951	-103.503081	3002503337	7	20.0S	35E	1980 N		660 W		14947	Plugged
2	E B COX & J L HAMON	STATE 001	32.557714	-103.504067	3002503353	19	20.0S	35E	2310 S		330 W		3519	Plugged
3	LEGACY RESERVES OPERATING, LP	LEA UNIT 003	32.571334	-103.51164	3002520038	13	20.0S	34E	1980 S		1980 E		14435	Active
4	LEGACY RESERVES OPERATING, LP	LEA UNIT 012	32.574975	-103.508422	3002526365	13	20.0S	34E	1980 N		990 E		16553	Active
5	LEGACY RESERVES OPERATING, LP	LEA UNIT 017	32.568365	-103.510901	3002532794	13	20.0S	34E	900 S		1756 E		14455	Active
6	LEGACY RESERVES OPERATING, LP	LEA FEDERAL UNIT 019	32.582231	-103.508443	3002536905	12	20.0S	34E	660 S		990 E		13295	Active
7	LEGACY RESERVES OPERATING, LP	LEA FEDERAL UNIT 028	32.563664	-103.507802	3002538718	24	20.0S	34E	810 N		810 E		13500	Active
8	SAMSON RESOURCES CO	LEA FEDERAL UNIT 023D	32.57951	-103.504126	3002539128	18	20.0S	35E	331 N		331 W		0	New (Not drilled or compl)
9	YATES PETROLEUM CORPORATION	IGLOO BRR STATE 002H	32.565377	-103.490186	3002540604	19	20.0S	35E	200 N		660 E		0	New (Not drilled or compl)