

Form C-102  
Revised August 1, 2011  
Submit one copy to appropriate  
District Office

**DISTRICT II**  
811 S. First St., Artesia, NM 88210  
Phone: (575) 748-1283 Fax: (575) 748-9720

**OIL CONSERVATION DIVISION**  
**1220 South St. Frances Dr.**  
**Santa Fe, NM 87505**

**DISTRICT III**  
1000 Rio Brazos Rd., Artes, NM 87410  
Phone: (505) 334-6178 Fax: (505) 334-6170

**DISTRICT IV**  
1220 S. St. Francis Dr., Santa Fe, NM 87505  
Phone: (505) 476-3480 Fax: (505) 476-3482

☐ AMENDED REPORT

# WELL LOCATION AND ACREAGE DEDICATION PLAT

API Number 30025-42342	Pool Code 37570	Pool Name Lea, Bone Spring
Property Code 302802	Property Name LEA UNIT	Well Number 32H
OGRID No. 240974	Operator Name LEGACY RESERVES OPERATING LP	Elevation 3656'

### Surface Location

UL or lot No.	Section	Township	Range	Lot Idn	Feet from the	North/South line	Feet from the	East/West line	County
0	12	20 S	34 E		2	SOUTH	1790	EAST	LEA

## Bottom Hole Location If Different From Surface

UL or lot No. G	Section 24	Township 20 S	Range 34 E	Lot Idn	Feet from the 2310	North/South line NORTH	Feet from the 1980	East/West line EAST	County LEA
Dedicated Acres		Joint or Infill		Consolidation Code		Order No.			

NO ALLOWABLE WILL BE ASSIGNED TO THIS COMPLETION UNTIL ALL INTERESTS HAVE BEEN CONSOLIDATED OR A NON-STANDARD UNIT HAS BEEN APPROVED BY THE DIVISION

**NOTE:**

1) Plane Coordinates shown hereon are Transverse Mercator Grid and Conform to the "New Mexico Coordinate System", New Mexico East Zone, North American Datum of 1927. Distances shown hereon are mean horizontal surface values.

**Plane Coordinate**  
 X = 753,463.0  
 Y = 575,785.6

**Plane Coordinate**  
 X = 753,330.6  
 Y = 568,197.7

1790'

7590.7'

S 0°59'59" W

1980'

#32H (SL)

(BHL)

R-33-E

R-34-E

12

13

24

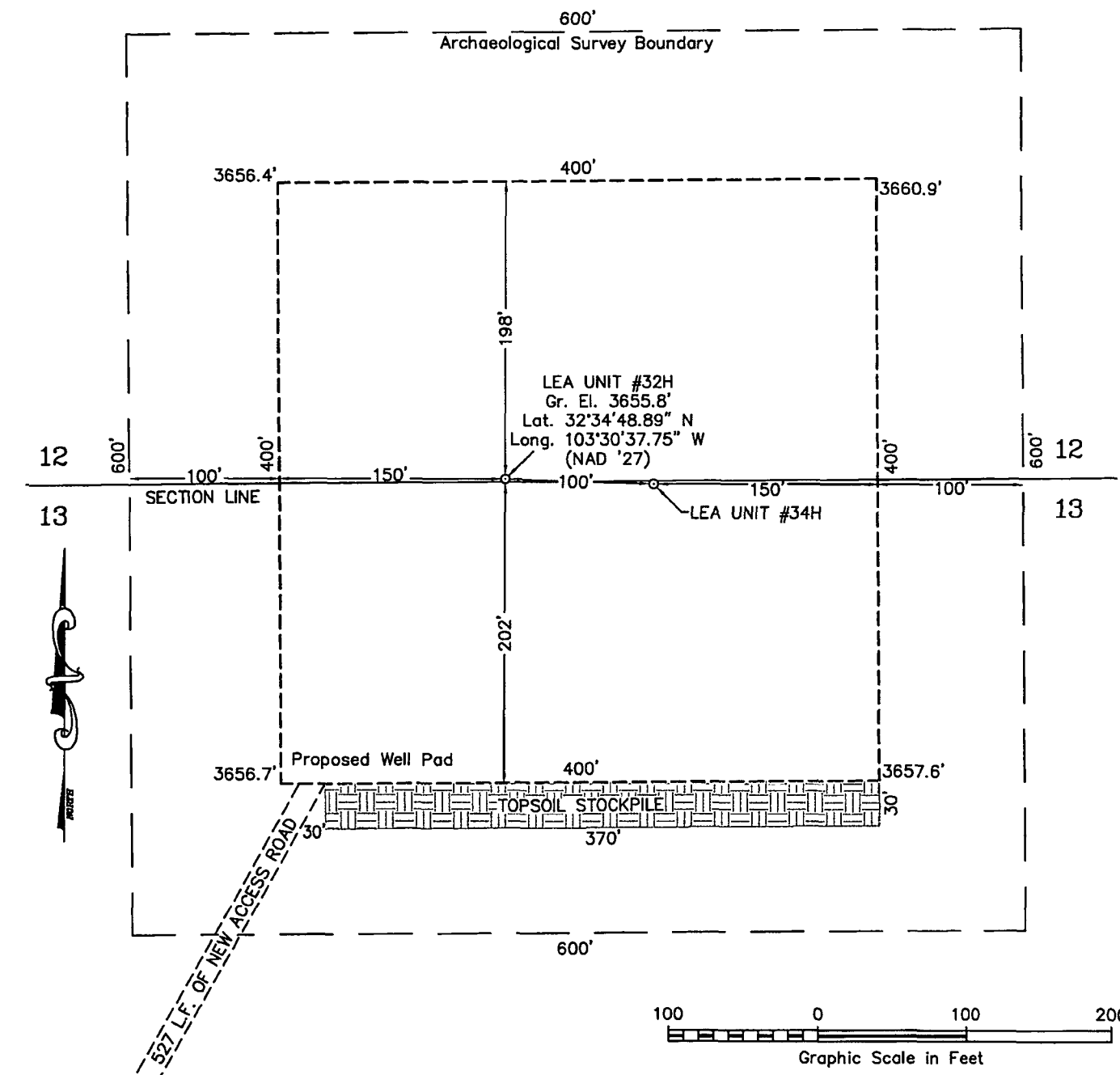
PM  
DEC 18 2010

# SECTION 12, TOWNSHIP 20 SOUTH, RANGE 34 EAST, N.M.P.M.

LEA COUNTY

NEW MEXICO

L-2014-0145-B



## DRIVING DIRECTIONS

FROM THE INTERSECTION OF STATE HIGHWAY 18 AND U.S. HIGHWAY 62-180 IN HOBBS, NEW MEXICO GO WEST AND SOUTHWEST ON U.S. HIGHWAY 62-180 23.6 MILES TO MARATHON ROAD ON SOUTH (LEFT) SIDE OF THE HIGHWAY, THEN GO SOUTH 3.9 MILES TO ANOTHER LEASE ROAD ON THE EAST (LEFT) SIDE OF THE ROAD, THEN GO EAST 150 FEET TO A POINT APPROXIMATELY 800 FEET SOUTH OF THE PROPOSED LOCATION.



FIRM REGISTRATION NUMBER: 100682-00  
110 W. LOUISIANA, STE. 110  
MIDLAND TEXAS, 79701  
(432) 687-0865 - (432) 687-0868 FAX

## LEGACY RESERVES OPERATING LP

### LEA UNIT #32H

Located 2' FSL & 1790' FEL, Section 12  
Township 20 South, Range 34 East, N.M.P.M.  
Lea County, New Mexico

Drawn By: SC	Date: February 24, 2014
Scale: 1" = 100'	Field Book: 599 / 16-18
Revision Date:	Quadrangle: Lea
W.O. No: 2014-0145	Dwg. No.: L-2014-0145-B

Topographic map of the Legacy Reserves area. The map shows contour lines, roads, and various wells. Key features include:

- LEA Unit #34H** and **LEA Unit #32H** (Legacy Reserves Operating LP).
- 527 LF. OF NEW ACCESS ROAD** (highlighted with a callout).
- Oil Well**, **Gas Well**, **Water Well**, **Drill Hole**, **Substa**, **Pumping Sta**, and **Water Tank**.
- Jeep Trail** and **Pipeline**.
- Grid sections**: 1, 2, 6, 7, 11, 12, 13, 18.
- Contour lines** with elevations such as 3674, 3677, 3679, 3666, 3644, 3654, 3650, 3651, 3652, 3655, 3657, 3660, 3666, 3679, 3684, 3685, 3686, 3687, 3688, 3689, 3690, 3691, 3692, 3693, 3694, 3695, 3696, 3697, 3698, 3699, 3700, 3701, 3702, 3703, 3704, 3705, 3706, 3707, 3708, 3709, 3710, 3711, 3712, 3713, 3714, 3715, 3716, 3717, 3718, 3719, 3720, 3721, 3722, 3723, 3724, 3725, 3726, 3727, 3728, 3729, 3730, 3731, 3732, 3733, 3734, 3735, 3736, 3737, 3738, 3739, 3740, 3741, 3742, 3743, 3744, 3745, 3746, 3747, 3748, 3749, 3750, 3751, 3752, 3753, 3754, 3755, 3756, 3757, 3758, 3759, 3760, 3761, 3762, 3763, 3764, 3765, 3766, 3767, 3768, 3769, 3770, 3771, 3772, 3773, 3774, 3775, 3776, 3777, 3778, 3779, 3780, 3781, 3782, 3783, 3784, 3785, 3786, 3787, 3788, 3789, 3790, 3791, 3792, 3793, 3794, 3795, 3796, 3797, 3798, 3799, 3800.

CONTOUR INTERVAL:  
LEA - 10'

LEA



**WEST  
COMPANY**  
of Midland, LLC

FIRM REGISTRATION NUMBER: 100682-00  
110 W. LOUISIANA, STE. 110  
MIDLAND TEXAS, 79701  
(432) 687-0865 - (432) 687-0868 FAX



C=the file is closed)                      (quarters are smallest to largest) (NAD83 UTM in meters)

(acre ft per annum)

File Nbr	Sub basin	Use	Diversion	Owner	County	POD Number	Code	Grant	Source	6416	4	Sec	Tws	Rng	X	Y
0654		STK		MARK SMITH	LE	CP 00654	DCL		4	4	12	20S	34E		640103	3605947*

**Word Count: 1**

**PLSS Search:**

**Section(s):** 12      **Township:** 20S      **Range:** 34E

**Sorted by:** File Number

**1 location was derived from PLSS - see Help**

data is furnished by the NMOSE/ISC and is accepted by the recipient with the expressed understanding that the OSE/ISC make no warranties, expressed or implied, concerning the accuracy, completeness, reliability, usability, or suitability for any particular purpose of the data.

14 2:38 PM



# New Mexico Office of the State Engineer

## Water Right Summary

WR File Number: CP 00654  
Primary Purpose: STK 72-12-1 LIVESTOCK WATERING  
Primary Status: DCL DECLARATION  
Total Acres:  
Total Diversion:  
Owner: MARK SMITH

### Documents on File

Trn #	Doc	File/Act	Status		Transaction Desc.	From/		Acres	Diversion	Consumptive
			1	2		To				
130815	72121	1982-11-17	DCL	PRC	CONVERSION CP 00654		T			

---For more information on Conversion Transactions, please see Help---

### Current Points of Diversion

POD Number	Source	Q Q Q				(NAD83 UTM in meters)		Other Location Desc	
		6416	4	Sec	Tws	Rng	X		Y
CP 00654 DCL		4	4	12	20S	34E	640103	3605947*	

\*An (\*) after northing value indicates UTM location was derived from PLSS - see Help



---

# *New Mexico Office of the State Engineer* **Wells with Well Log Information**

---

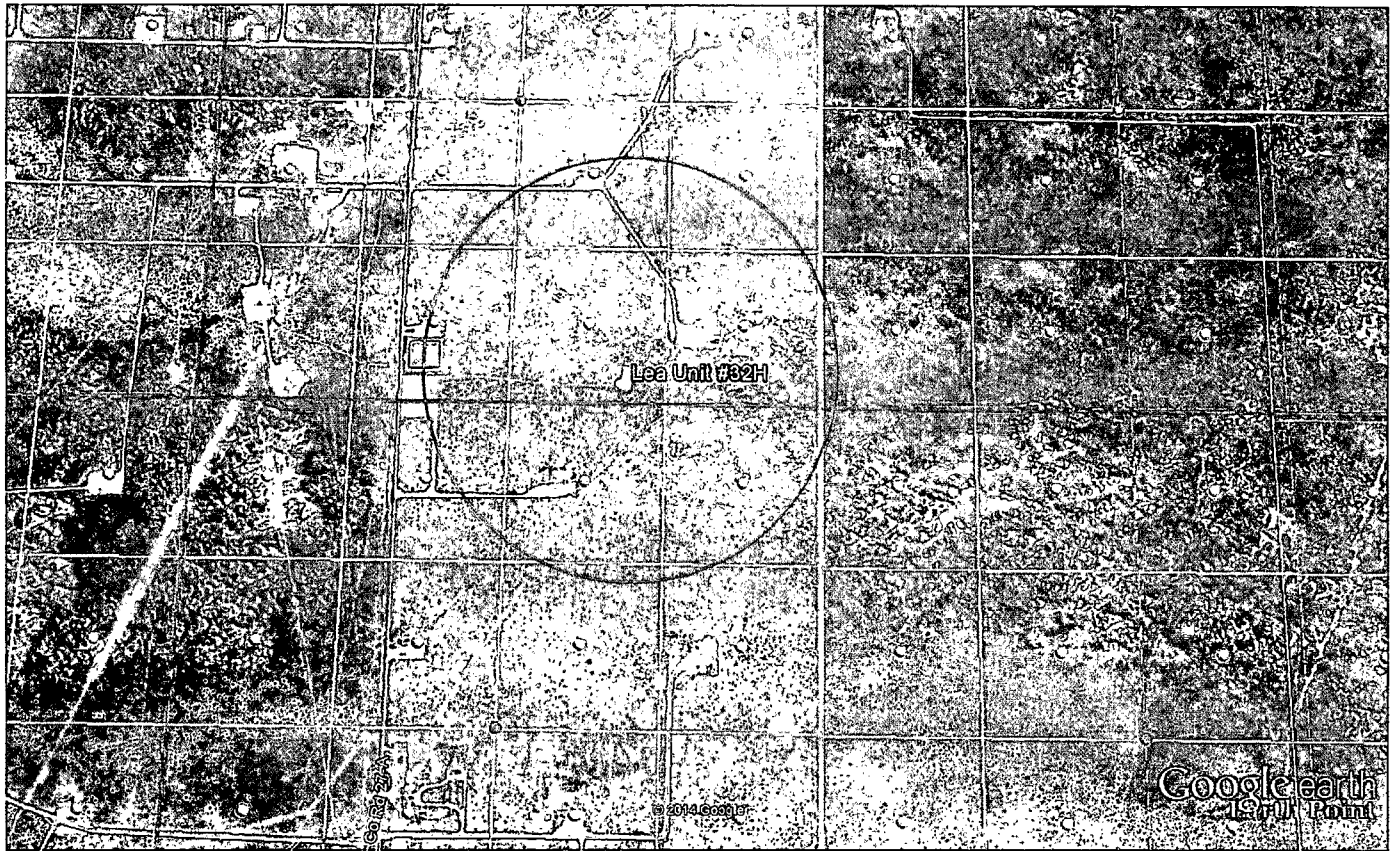
No wells found.

**PLSS Search:**

**Section(s):** 12

**Township:** 20S

**Range:** 34E



Google earth

