

DISTRICT I

1 N. French Dr., Hobbs, NM 88240
Phone: (575) 393-6181 Fax: (575) 393-0720

DISTRICT II

811 S. First St., Artesia, NM 88210
Phone: (575) 748-1283 Fax: (575) 748-9720

DISTRICT III

1000 Rio Brazos Rd., Artesia, NM 87410
Phone: (505) 334-6178 Fax: (505) 334-6170

DISTRICT IV

8 St. Francis Dr., Santa Fe, NM 87505
Phone: (505) 478-3480 Fax: (505) 478-3482

State of New Mexico
Energy, Minerals & Natural Resources Department

OIL CONSERVATION DIVISION
1220 South St. Frances Dr.
Santa Fe, NM 87505

Form C-102
Revised August 1, 2011
Submit one copy to appropriate
District Office

☐ AMENDED REPORT

WELL LOCATION AND ACREAGE DEDICATION PLAT

API Number 30-025-42343	Pool Code 37570	Pool Name Lea, Bone Spring
Property Code 302802	Property Name LEA UNIT	Well Number 33H
GRID No. 240974	Operator Name LEGACY RESERVES OPERATING LP	Elevation 3655'

Surface Location

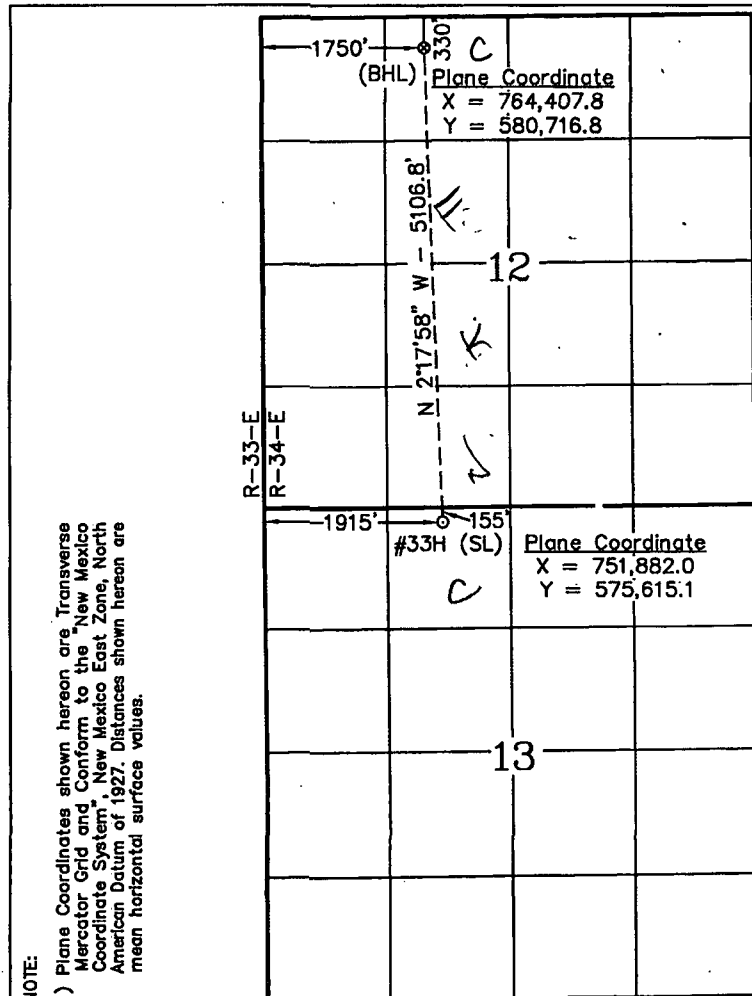
UL or lot No.	Section	Township	Range	Lot Idn	Feet from the	North/South line	Feet from the	East/West line	County
C	13	20 S	34 E		155	NORTH	1915	WEST	LEA

Bottom Hole Location If Different From Surface

UL or lot No.	Section	Township	Range	Lot Idn	Feet from the	North/South line	Feet from the	East/West line	County
C	12	20 S	34 E		330	NORTH	1750	WEST	LEA

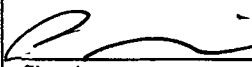
Dedicated Acres	Joint or Infill	Consolidation Code	Order No.
160			

NO ALLOWABLE WILL BE ASSIGNED TO THIS COMPLETION UNTIL ALL INTERESTS HAVE BEEN CONSOLIDATED OR A NON-STANDARD UNIT HAS BEEN APPROVED BY THE DIVISION



OPERATOR CERTIFICATION

I hereby certify that the information contained herein is true and complete to the best of my knowledge and belief, and that this organization either owns a working interest or unleased mineral interest in the land including the proposed bottom hole location or has a right to drill this well at this location pursuant to a contract with an owner of such a mineral or working interest, or to a voluntary pooling agreement or a compulsory pooling order heretofore entered by the division.

 05/29/2014
Signature Date
Steve Morris
Printed Name
steve.morris@mojocorp.ca
E-mail Address

SURVEYOR CERTIFICATION

I hereby certify that the well location shown on this plat was plotted from field notes of actual surveys made by me or under my supervision, and that the same is true and correct to the best of my belief.

January 30, 2014
Date of Survey
Signature
SC
Seal of Professional Surveyor
12185
W.O. Num. 2014-0146
Certificate No. Macon McDonald 12185

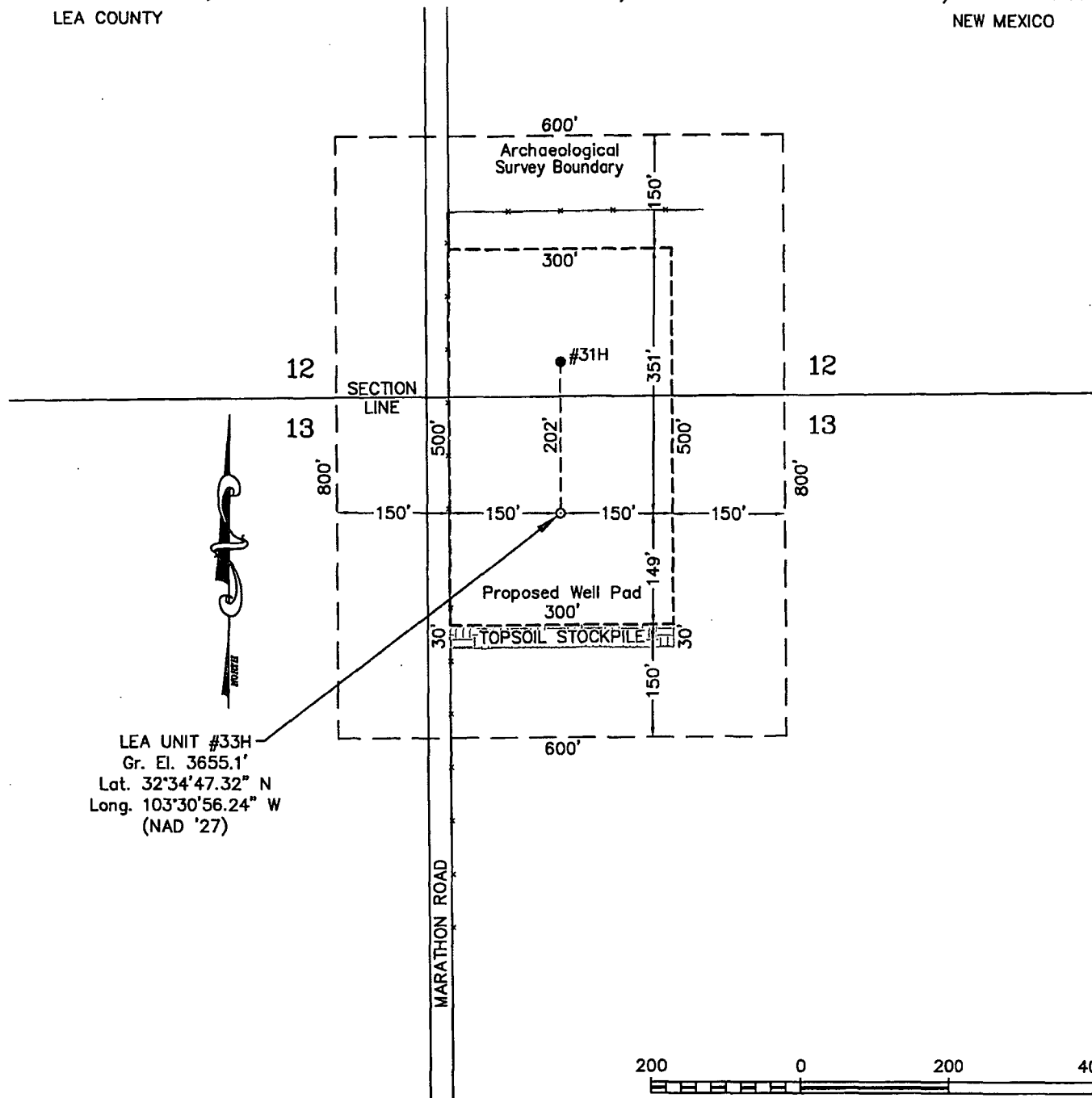
DEC 18 2014

SECTION 13, TOWNSHIP 20 SOUTH, RANGE 34 EAST, N.M.P.M.

LEA COUNTY

NEW MEXICO

L-2014-0146-B



LEA UNIT #33H
Gr. El. 3655.1'
Lat. 32°34'47.32" N
Long. 103°30'56.24" W
(NAD '27)

DRIVING DIRECTIONS

FROM THE INTERSECTION OF STATE HIGHWAY 18 AND U.S. HIGHWAY 62-180 IN HOBBS, NEW MEXICO GO WEST AND SOUTHWEST ON U.S. HIGHWAY 62-180 23.6 MILES TO MARATHON ROAD ON SOUTH (LEFT) SIDE OF THE HIGHWAY, THEN GO SOUTH 3.9 MILES TO ANOTHER LEASE ROAD ON THE EAST (LEFT) SIDE OF THE ROAD, THEN GO EAST 150 FEET TO A POINT APPROXIMATELY 600 FEET SOUTH OF THE PROPOSED LOCATION.



FIRM REGISTRATION NUMBER: 100682-00
110 W. LOUISIANA, STE. 110
MIDLAND TEXAS, 79701
(432) 687-0865 - (432) 687-0868 FAX

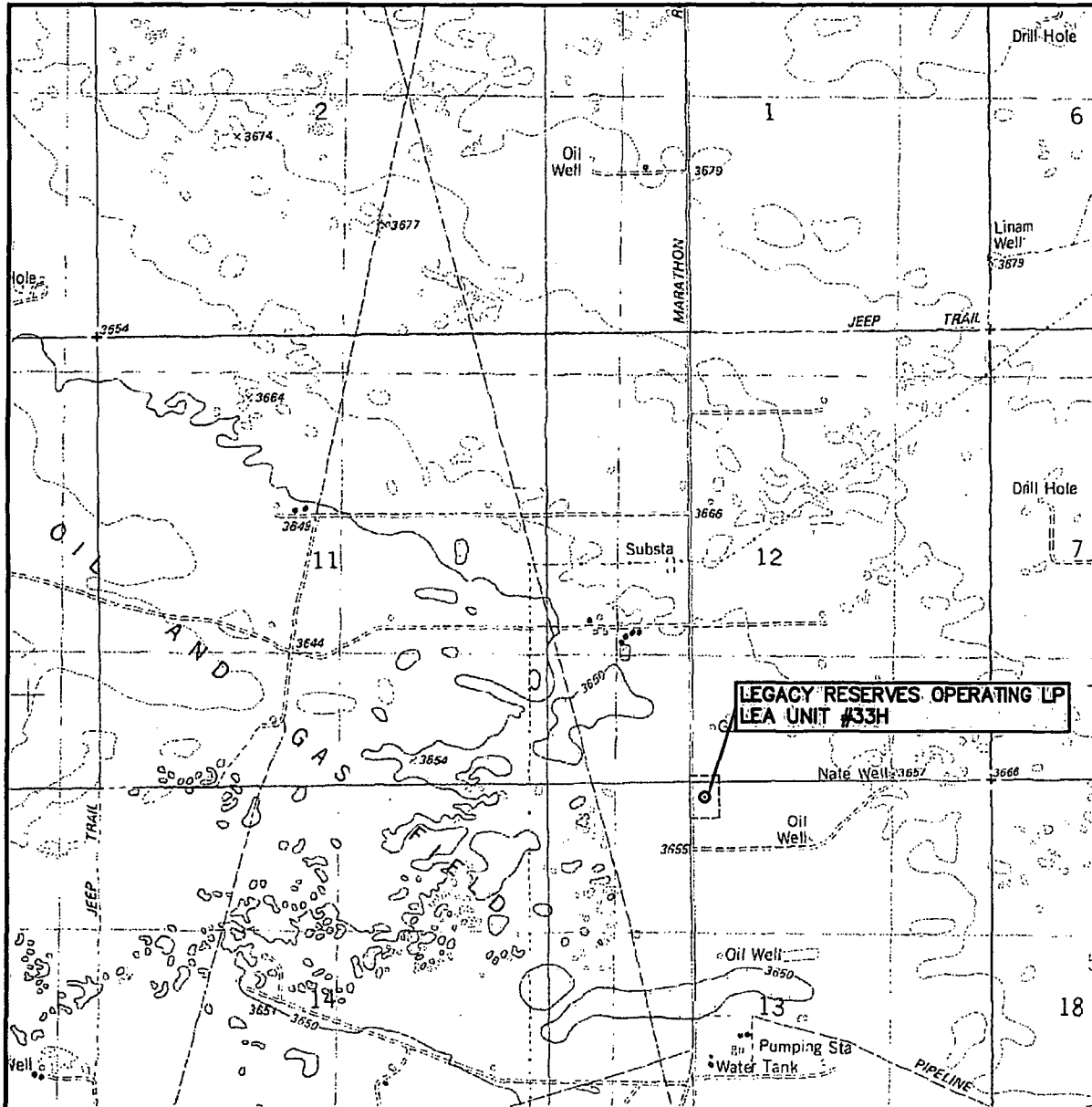
LEGACY RESERVES OPERATING LP

LEA UNIT #33H

Located 155' FNL & 1915' FWL, Section 13
Township 20 South, Range 34 East, N.M.P.M.
Lea County, New Mexico

Drawn By: SC	Date: February 24, 2014
Scale: 1" = 200'	Field Book: 599 / 14-15
Revision Date:	Quadrangle: Lea
W.O. No: 2014-0146	Dwg. No.: L-2014-0146-B

LOCATION VERIFICATION MAP



SCALE: 1" = 2000'

CONTOUR INTERVAL:
LEA - 10'

SEC. 13 TWP. 20-S RGE. 34-E

SURVEY N.M.P.M.

COUNTY LEA

DESCRIPTION 155' FNL & 1915' FWL

ELEVATION 3655'

OPERATOR LEGACY RESERVES OPERATING LP

LEASE LEA UNIT

U.S.G.S. TOPOGRAPHIC MAP
LEA



**WEST
COMPANY**
of Midland, LLC

FIRM REGISTRATION NUMBER: 100682-00
110 W. LOUISIANA, STE. 110
MIDLAND TEXAS, 79701
(432) 687-0865 - (432) 687-0868 FAX



New Mexico Office of the State Engineer
Active & Inactive Points of Diversion
(with Ownership Information)

No PODs found.

PLSS Search:

Section(s): 13

Township: 20S

Range: 34E



New Mexico Office of the State Engineer **Water Column/Average Depth to Water**

No records found.

PLSS Search:

Section(s): 13

Township: 20S

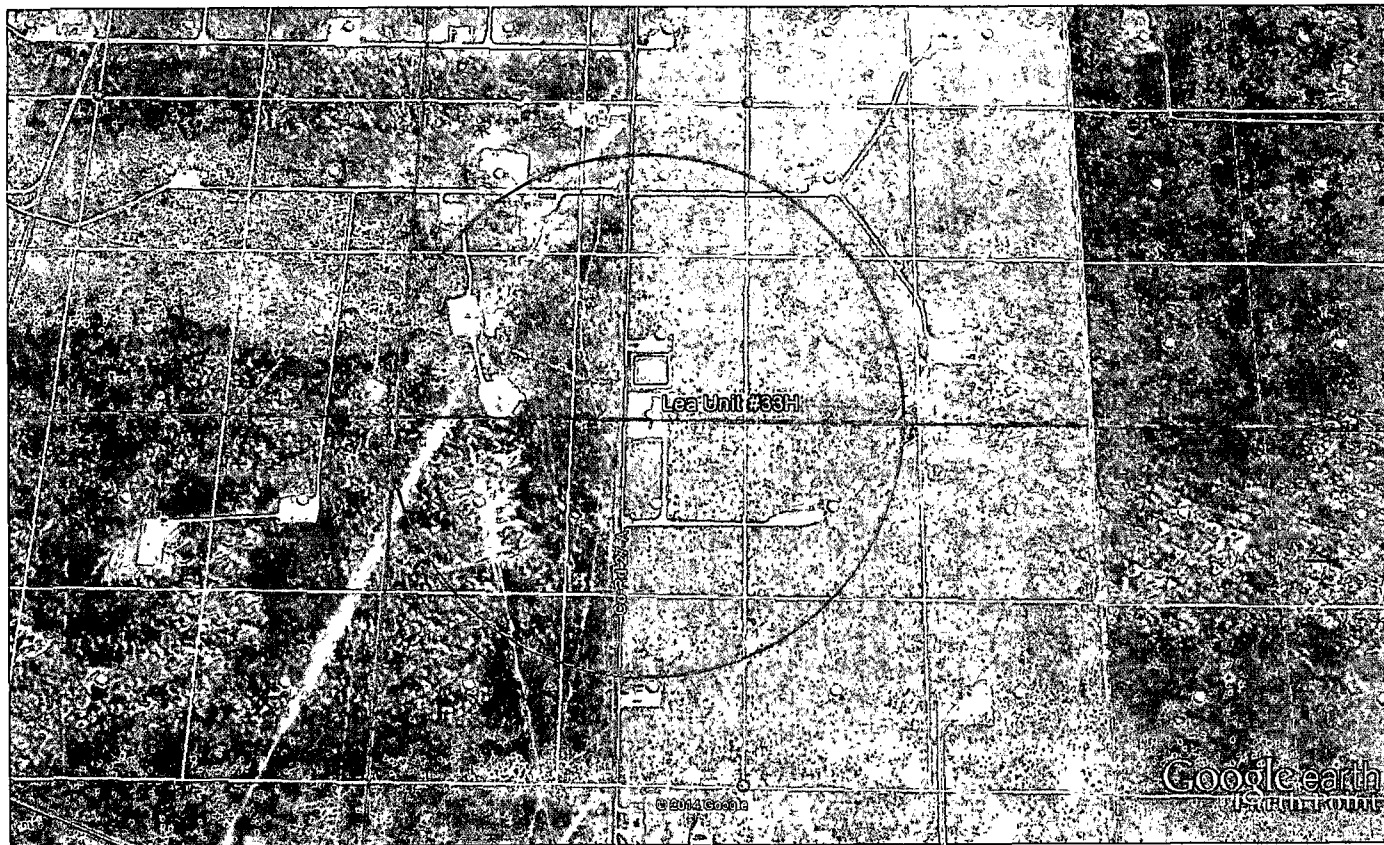
Range: 34E

The data is furnished by the NMOSE/ISC and is accepted by the recipient with the expressed understanding that the OSE/ISC make no warranties, expressed or implied, concerning the accuracy, completeness, reliability, usability, or suitability for any particular purpose of the data.

5/29/14 7:20 AM

Page 1 of 1

WATER COLUMN/ AVERAGE
DEPTH TO WATER



Google earth

feet 4000
km 1



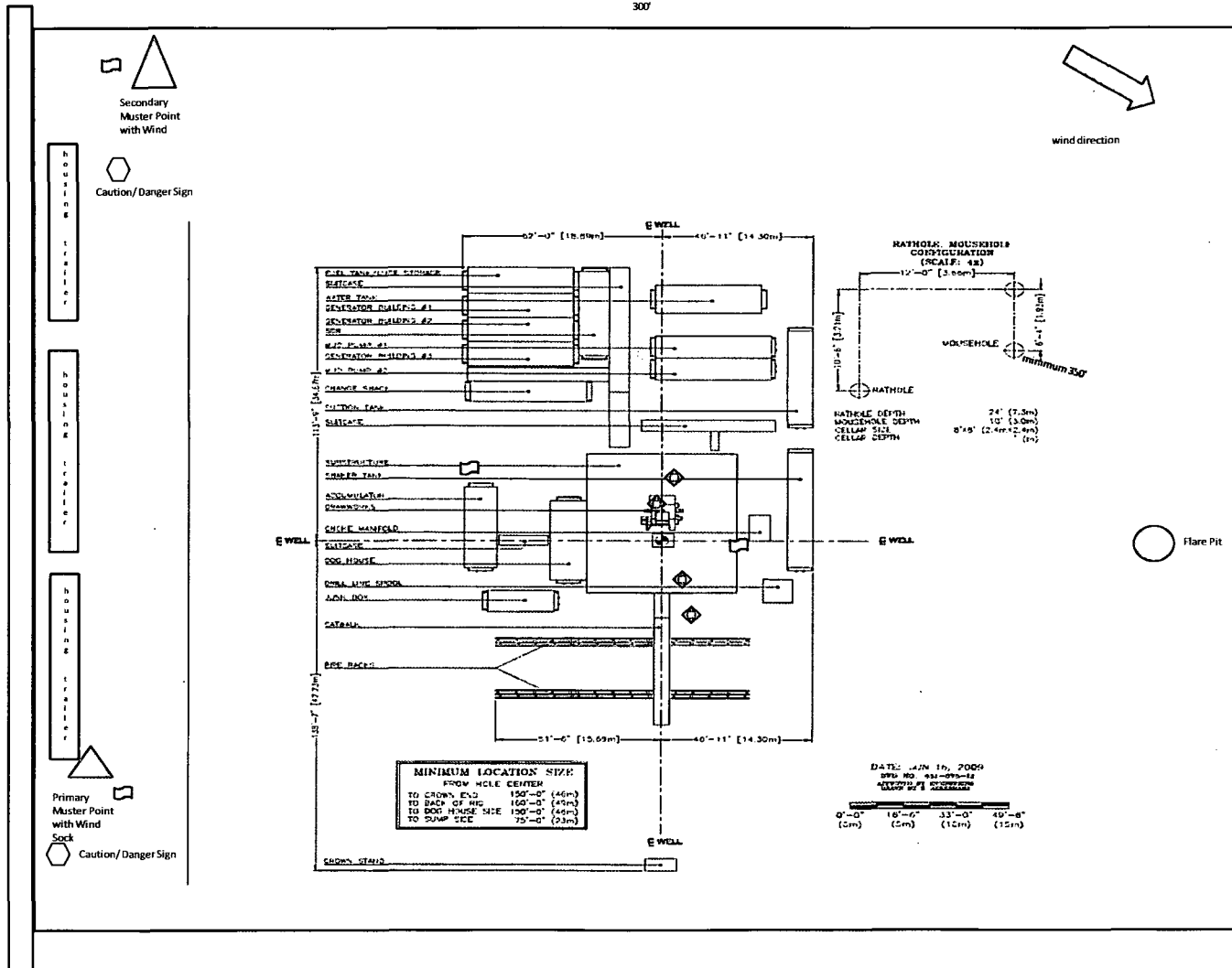
Lea Unit 33H - Site Layout

300'



North

Access Road



Alarm



Windsock



500'