

DISTRICT I  
1625 N. French Dr., Hobbs, NM 88240  
Phone: (575) 393-6161 Fax: (575) 393-0720  
DISTRICT II  
811 S. First St., Artesia, NM 88210  
Phone: (575) 748-1283 Fax: (575) 748-9720  
DISTRICT III  
1000 Rio Brazos Road, Aztec, NM 87410  
Phone: (505) 334-6178 Fax: (505) 334-6170  
DISTRICT IV  
1220 S. St. Francis Dr., Santa Fe, NM 87505  
Phone: (505) 476-3460 Fax: (505) 476-3462

State of New Mexico  
Energy, Minerals & Natural Resources Department  
OIL CONSERVATION DIVISION  
1220 South St. Francis Dr.  
Santa Fe, New Mexico 87505

HOBBSOCD

DEC 23 2014

RECEIVED

Form C-102  
Revised August 1, 2011  
Submit one copy to appropriate  
District Office

☐ AMENDED REPORT

WELL LOCATION AND ACREAGE DEDICATION PLAT

API Number <b>30-025-41007</b>	Pool Code <b>44500</b>	Pool Name <b>Maljamar; Yeso West</b>
Property Code <b>39744</b>	Property Name <b>BRANEX-COG FEDERAL COM</b>	Well Number <b>18H</b>
OGRID No. <b>229137</b>	Operator Name <b>COG OPERATING, LLC</b>	Elevation <b>4055'</b>

Surface Location

UL or lot No.	Section	Township	Range	Lot Idn	Feet from the	North/South line	Feet from the	East/West line	County
M	9	17-S	32-E		330	SOUTH	330	WEST	LEA

Bottom Hole Location If Different From Surface

UL or lot No.	Section	Township	Range	Lot Idn	Feet from the	North/South line	Feet from the	East/West line	County
P	9	17-S	32-E		330	SOUTH	330	EAST	LEA

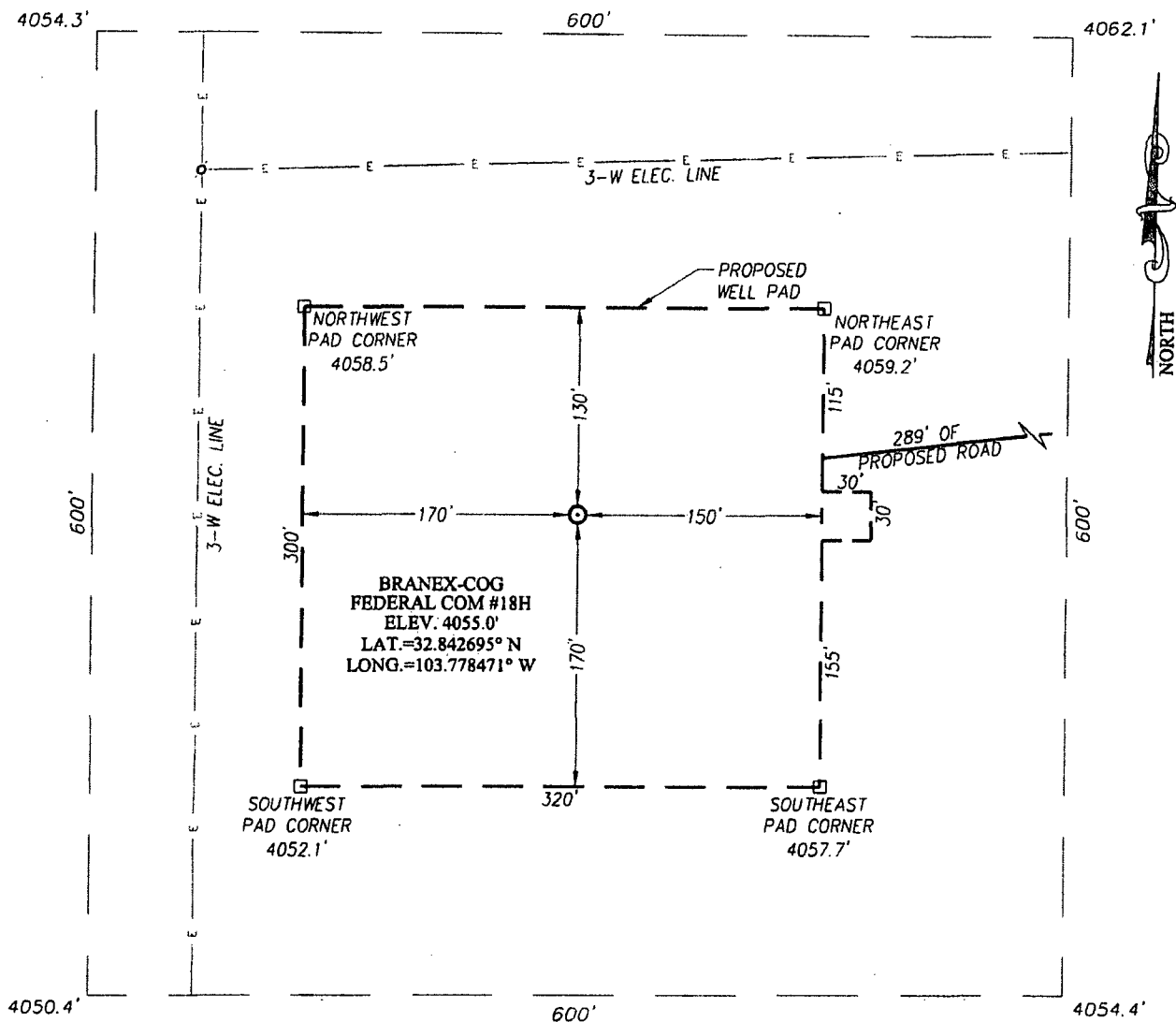
Dedicated Acres	Joint or Infill	Consolidation Code	Order No.
160			

NO ALLOWABLE WILL BE ASSIGNED TO THIS COMPLETION UNTIL ALL INTERESTS HAVE BEEN CONSOLIDATED OR A NON-STANDARD UNIT HAS BEEN APPROVED BY THE DIVISION

<p><b>CORNER COORDINATES TABLE</b></p> <p>A) Y=671719.2 N, X=670077.3 E</p> <p>B) Y=671735.3 N, X=675358.9 E</p> <p>C) Y=670400.2 N, X=670086.3 E</p> <p>D) Y=670415.4 N, X=675366.5 E</p> <p><b>GEODETIC COORDINATES</b> NAD 27 NME</p> <p><b>SURFACE LOCATION</b> Y=670731.0 N X=670413.9 E</p> <p>LAT.=32.842695° N LONG.=103.778471° W</p> <p><b>BOTTOM HOLE LOCATION</b> Y=670744.4 N X=675034.7 E</p>	<p><b>OPERATOR CERTIFICATION</b></p> <p>I hereby certify that the information herein is true and complete to the best of my knowledge and belief, and that this organization either owns a working interest or unleased mineral interest in the land including the proposed bottom hole location or has a right to drill this well at this location pursuant to a contract with an owner of such mineral or working interest, or to a voluntary pooling agreement or a compulsory pooling order heretofore entered by the division.</p> <p>Signature: <u>[Signature]</u> Date: <u>11-6-14</u></p> <p>Printed Name: <u>Kelly J. Holly</u></p> <p>E-mail Address: <u>kholly@concho.com</u></p> <p><b>SURVEYOR CERTIFICATION</b></p> <p>I hereby certify that the well location shown on this plat was plotted from field notes of actual surveys made by me or under my supervision, and that the same is true and correct to the best of my belief.</p> <p>JUNE 13, 2012</p> <p>Date of Survey</p> <p>Signature &amp; Seal of Professional Surveyor:</p> <p><u>[Signature]</u> <u>RONALD J. EIDSON</u></p> <p>NEW MEXICO</p> <p>3239</p> <p>Certificate Number: Gary G. Eidson 12641 Ronald J. Eidson 3239</p> <p>LSL REL. W.O.N.D. 14.13.1151</p>
---	---

DEC 24 2014

**SECTION 9, TOWNSHIP 17 SOUTH, RANGE 32 EAST, N.M.P.M.**  
LEA COUNTY NEW MEXICO

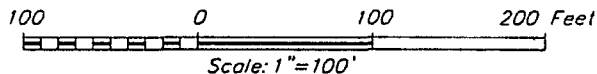


**DIRECTIONS TO LOCATION**

FROM THE INTERSECTION OF U.S. HWY. #82 AND L-126 (MALJAMAR) GO SOUTH ON L-126 APPROX. 0.65 MILES. TURN RIGHT AND GO SOUTHWEST APPROX. 0.9 MILES. TURN RIGHT AND GO NORTHWEST APPROX. 385 FEET TO A PROP. ROAD SURVEY. FOLLOW ROAD SURVEY WEST-SOUTHWEST APPROX. 442 FEET TO THIS LOCATION STAKE.



PROVIDING SURVEYING SERVICES  
SINCE 1946  
**JOHN WEST SURVEYING COMPANY**  
412 N. DAL PASO  
HOBBS, N.M. 88240  
(575) 393-3117 www.jwsc.biz



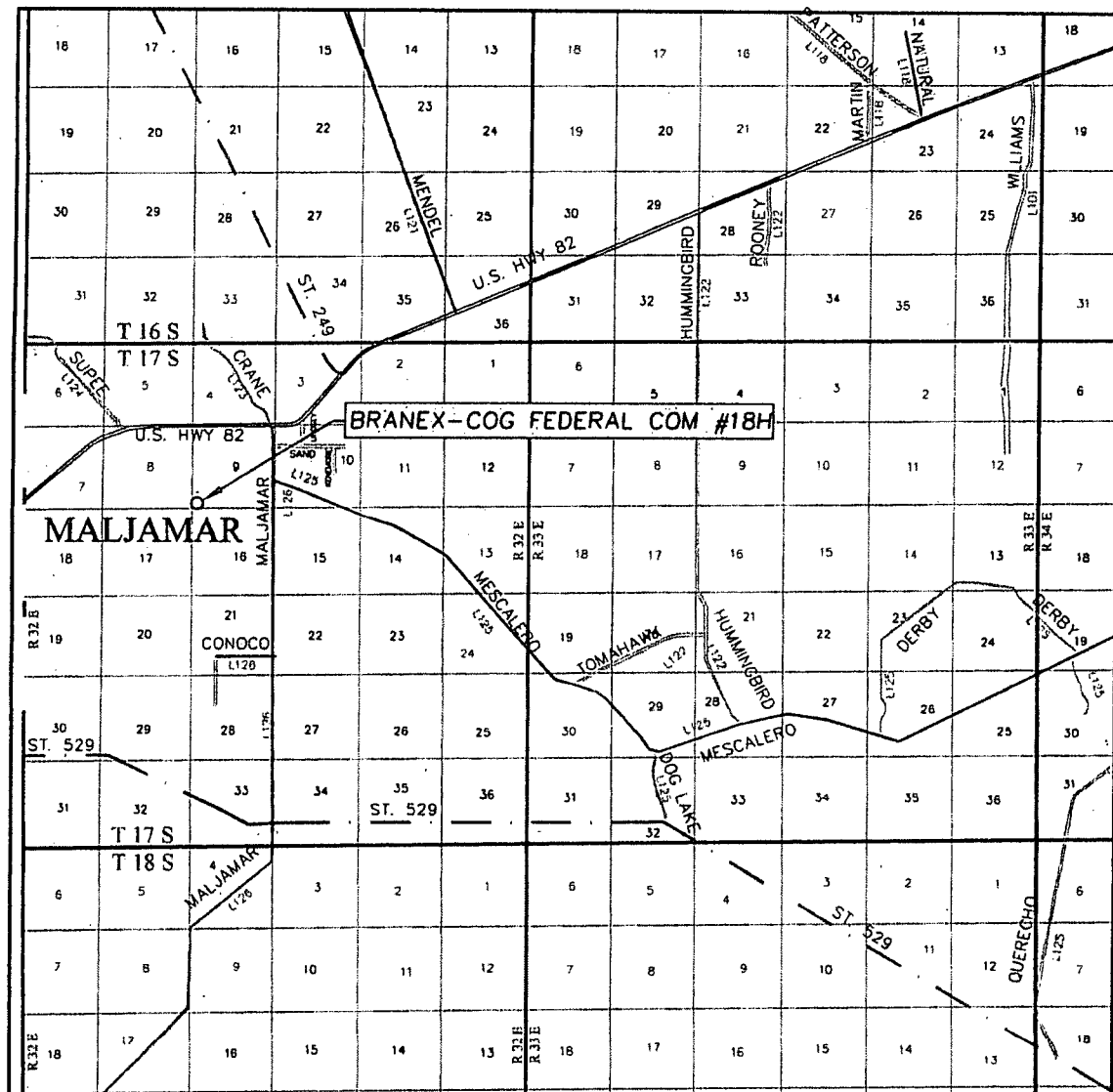
**COG OPERATING, LLC**

**BRANEX-COG FEDERAL COM #18H WELL**  
LOCATED 330 FEET FROM THE SOUTH LINE  
AND 330 FEET FROM THE WEST LINE OF SECTION 9,  
TOWNSHIP 17 SOUTH, RANGE 32 EAST, N.M.P.M.,  
LEA COUNTY, NEW MEXICO

Survey Date: 6/13/12	CAD Date: 10/24/14	Drawn By: LSL
W.O. No.: 14131151	Rev:	Rel. W.O.: 12131481

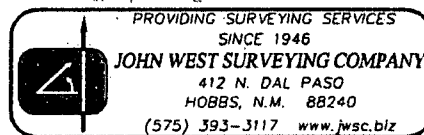
Sheet 1 of 1

# VICINITY MAP



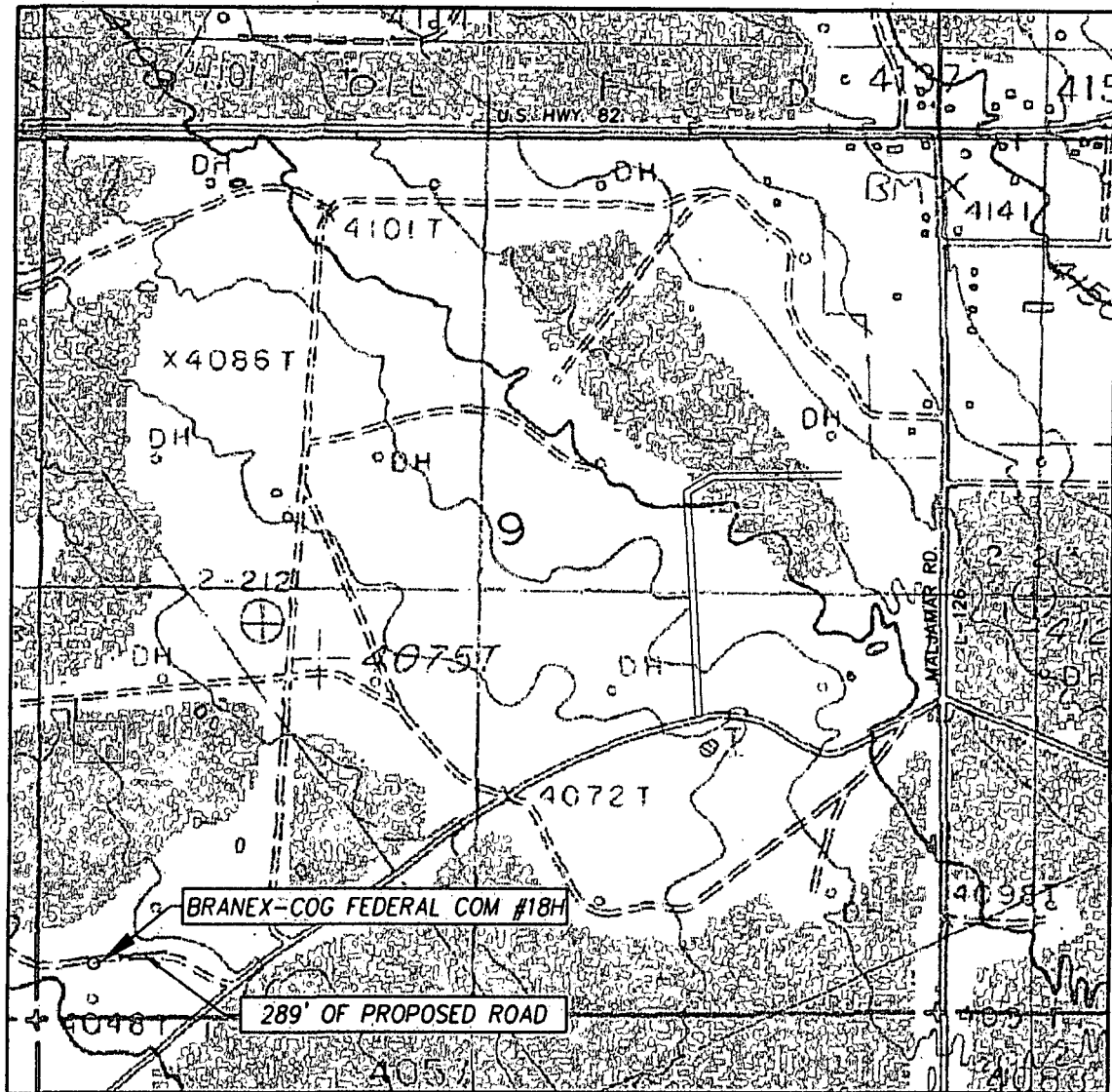
SCALE: 1" = 2 MILES

SEC. 9 TWP. 17-S RGE. 32-E  
 SURVEY N.M.P.M.  
 COUNTY LEA STATE NEW MEXICO  
 DESCRIPTION 330' FSL & 330' FWL  
 ELEVATION 4055'  
 OPERATOR COG OPERATING, LLC  
 LEASE BRANEX-COG FEDERAL COM



PROVIDING SURVEYING SERVICES  
 SINCE 1946  
**JOHN WEST SURVEYING COMPANY**  
 412 N. DAL PASO  
 HOBBS, N.M. 88240  
 (575) 393-3117 www.jwsc.biz

# LOCATION VERIFICATION MAP



SCALE: 1" = 1000'

CONTOUR INTERVAL:  
MALJAMAR, N.M. - 10'

SEC. 9 TWP. 17-S RGE. 32-E

SURVEY N.M.P.M.

COUNTY LEA STATE NEW MEXICO

DESCRIPTION 330' FSL & 330' FWL

ELEVATION 4055'

OPERATOR COG OPERATING, LLC

LEASE BRANEX-COG FEDERAL COM

U.S.G.S. TOPOGRAPHIC MAP  
MALJAMAR, N.M.

