

District I
1625 N. French Dr., Hobbs, NM 88240
Phone: (575) 393-6161 Fax: (575) 393-0720
District II
311 S. First St., Artesia, NM 88210
Phone: (575) 748-1283 Fax: (575) 748-9720
District III
1000 Rio Brazos Road, Aztec, NM 87410
Phone: (505) 334-6178 Fax: (505) 334-6170
District IV
1220 S. St. Francis Dr., Santa Fe, NM 87505
Phone: (505) 476-3460 Fax: (505) 476-3462

State of New Mexico
Energy, Minerals & Natural Resources **DEPARTMENT**
OIL CONSERVATION DIVISION
1220 South St. Francis Dr. **DEC 29 2014**
Santa Fe, NM 87505

Form C-102
Revised August 1, 2011
Submit one copy to appropriate
District Office
☐ AMENDED REPORT

RECEIVED

WELL LOCATION AND ACREAGE DEDICATION PLAT

¹ API Number 30-025-42355	² Pool Code 98109	³ Pool Name SWD: DEV-FUS-MON-SIMP
⁴ Property Code	⁵ Property Name RATTLESNAKE 16 SWD	⁶ Well Number 1
⁷ OGRID No. 6137	⁸ Operator Name DEVON ENERGY PRODUCTION COMPANY, L.P.	⁹ Elevation 3337.3

¹⁰ Surface Location

UL or lot no.	Section	Township	Range	Lot Idn	Feet from the	North/South line	Feet from the	East/West line	County
E	16	26 S	34 E		2375	NORTH	210	WEST	LEA

¹¹ Bottom Hole Location If Different From Surface

UL or lot no.	Section	Township	Range	Lot Idn	Feet from the	North/South line	Feet from the	East/West line	County

¹² Dedicated Acres	¹³ Joint or Infill	¹⁴ Consolidation Code	¹⁵ Order No.
40			

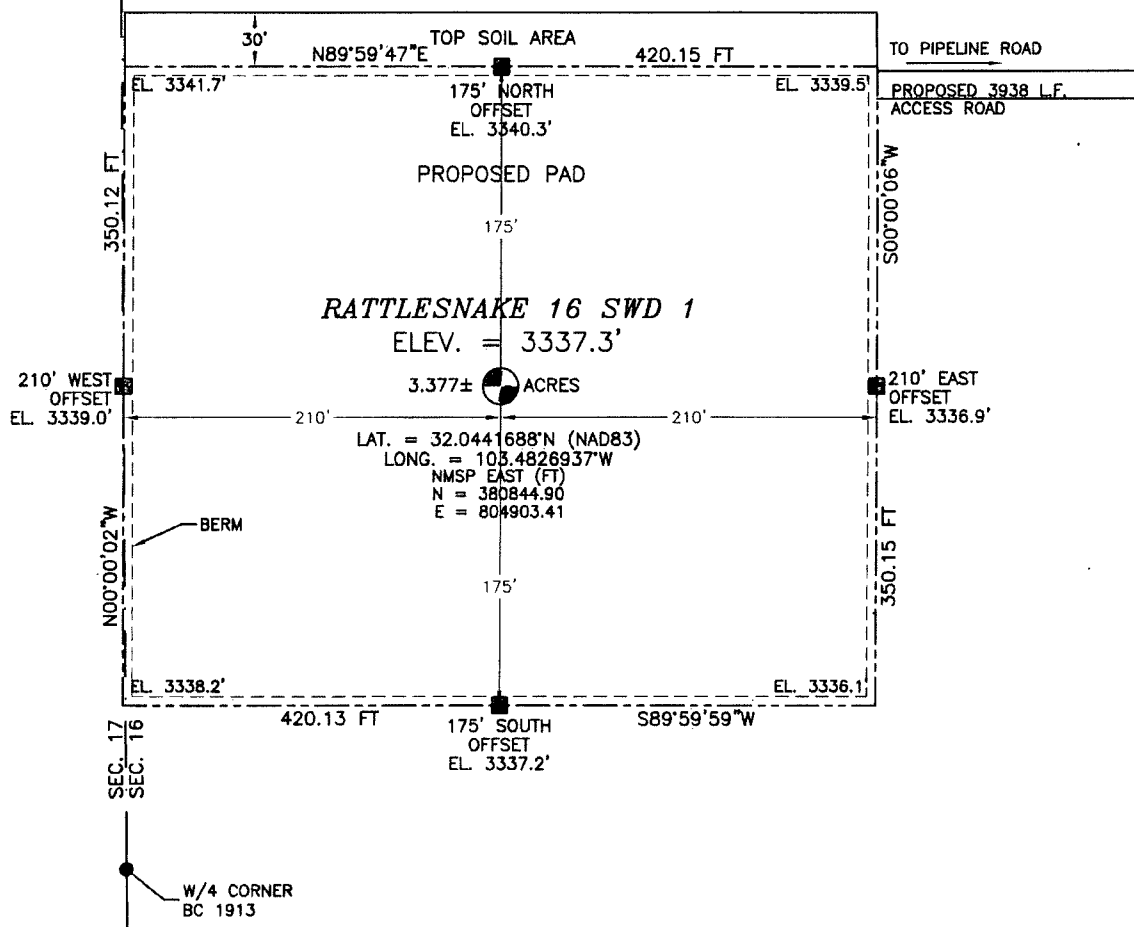
No allowable will be assigned to this completion until all interests have been consolidated or a non-standard unit has been approved by the division.

<p>N89°29'36"E 2644.89 FT</p> <p>NW CORNER SEC. 16 LAT. = 32.0506956°N LONG. = 103.4833738°W NMSP EAST (FT) N = 383217.60 E = 804673.98</p> <p>N/4 CORNER SEC. 16 SCALED</p> <p>NE CORNER SEC. 16 LAT. = 32.0507085°N LONG. = 103.4663040°W NMSP EAST (FT) N = 383264.37 E = 809962.75</p> <p>500°30'16"E 2639.93 FT</p>		<p>17 OPERATOR CERTIFICATION I hereby certify that the information contained herein is true and complete to the best of my knowledge and belief, and that this organization either owns a working interest or unleased mineral interest in the land including the proposed bottom hole location or has a right to drill this well at this location pursuant to a contract with an owner of such a mineral or working interest, or to a voluntary pooling agreement or a compulsory pooling order heretofore entered by the division.</p> <p><i>[Signature]</i> 12/22/2014 Signature Date David H. Cook Regulatory Specialist Printed Name david.cook@dvn.com E-mail Address</p>
<p>2375'</p> <p>RATTLESNAKE 16 SWD 1 ELEV. = 3337.3' LAT. = 32.0441688°N (NAD83) LONG. = 103.4826937°W NMSP EAST (FT) N = 380844.90 E = 804903.41</p> <p>210' SURFACE LOCATION</p> <p>W/4 CORNER SEC. 16 LAT. = 32.0434438°N LONG. = 103.4833711°W NMSP EAST (FT) N = 380579.49 E = 804695.60</p> <p>NOTE: LATITUDE AND LONGITUDE COORDINATES ARE SHOWN USING THE NORTH AMERICAN DATUM OF 1983 (NAD83). LISTED NEW MEXICO STATE PLANE EAST COORDINATES ARE GRID (NAD83). BASIS OF BEARING AND DISTANCES USED ARE NEW MEXICO STATE PLANE EAST COORDINATES MODIFIED TO THE SURFACE.</p> <p>500°30'07"E 2641.78 FT</p>		
<p>589°27'52"W 2649.93 FT</p> <p>SW CORNER SEC. 16 LAT. = 32.0361753°N LONG. = 103.4833609°W NMSP EAST (FT) N = 377935.32 E = 807719.56</p> <p>S/4 CORNER SEC. 16 LAT. = 32.0361857°N LONG. = 103.4748110°W NMSP EAST (FT) N = 377960.09 E = 807368.98</p> <p>SE CORNER SEC. 16 LAT. = 32.0361926°N LONG. = 103.4662911°W NMSP EAST (FT) N = 377983.66 E = 810009.13</p> <p>589°29'19"W 2640.66 FT</p>		<p>18 SURVEYOR CERTIFICATION I hereby certify that the well location shown on this plat was plotted from field notes of actual surveys made by me or under my supervision, and that the same is true and correct to the best of my belief.</p> <p>NOVEMBER 24, 2014 (12797) Date of Survey <i>[Signature]</i> Signature and Seal of Professional Surveyor Certificate Number FILMON F. JARAMILLO, PLS 12797 SURVEY NO. 2918B</p>

JAN 07 2015

**SECTION 16, TOWNSHIP 26 SOUTH, RANGE 34 EAST, N.M.P.M.
LEA COUNTY, STATE OF NEW MEXICO
SITE MAP**

NOTE: LATITUDE AND LONGITUDE COORDINATES ARE SHOWN USING THE NORTH AMERICAN DATUM OF 1983 (NAD83), LISTED NEW MEXICO STATE PLANE EAST COORDINATES ARE GRID (NAD83). BASIS OF BEARING AND DISTANCES USED ARE NEW MEXICO STATE PLANE EAST COORDINATES MODIFIED TO THE SURFACE.



010 50 100 200

SCALE 1" = 100'

DIRECTIONS TO LOCATION

FROM STATE HWY. #128 AND COUNTY ROAD #2 (BATTLE AXE) GO SOUTH AND WEST ON COUNTY ROAD #2 12.0 MILES TO A CALICHE ROAD ON LEFT (SOUTH) TURN ON CALICHE ROAD GO SOUTH APPROX. 0.8 MILES TO A PIPELINE ROAD THEN TURN LEFT (EAST) ON PIPELINE ROAD GO APPROX. 3.0 MILES TO A PIPELINE ROAD ON RIGHT (SOUTH) TURN ON PIPELINE ROAD GO SOUTHEAST ON PIPELINE ROAD APPROX. 1.7 MILES TO ROAD LATH WITH RED AND WHITE FLAGGING ON RIGHT SIDE (WEST OF ROAD) FOLLOW ROAD LATHS APPROX. 0.8 MILES TO LOCATION

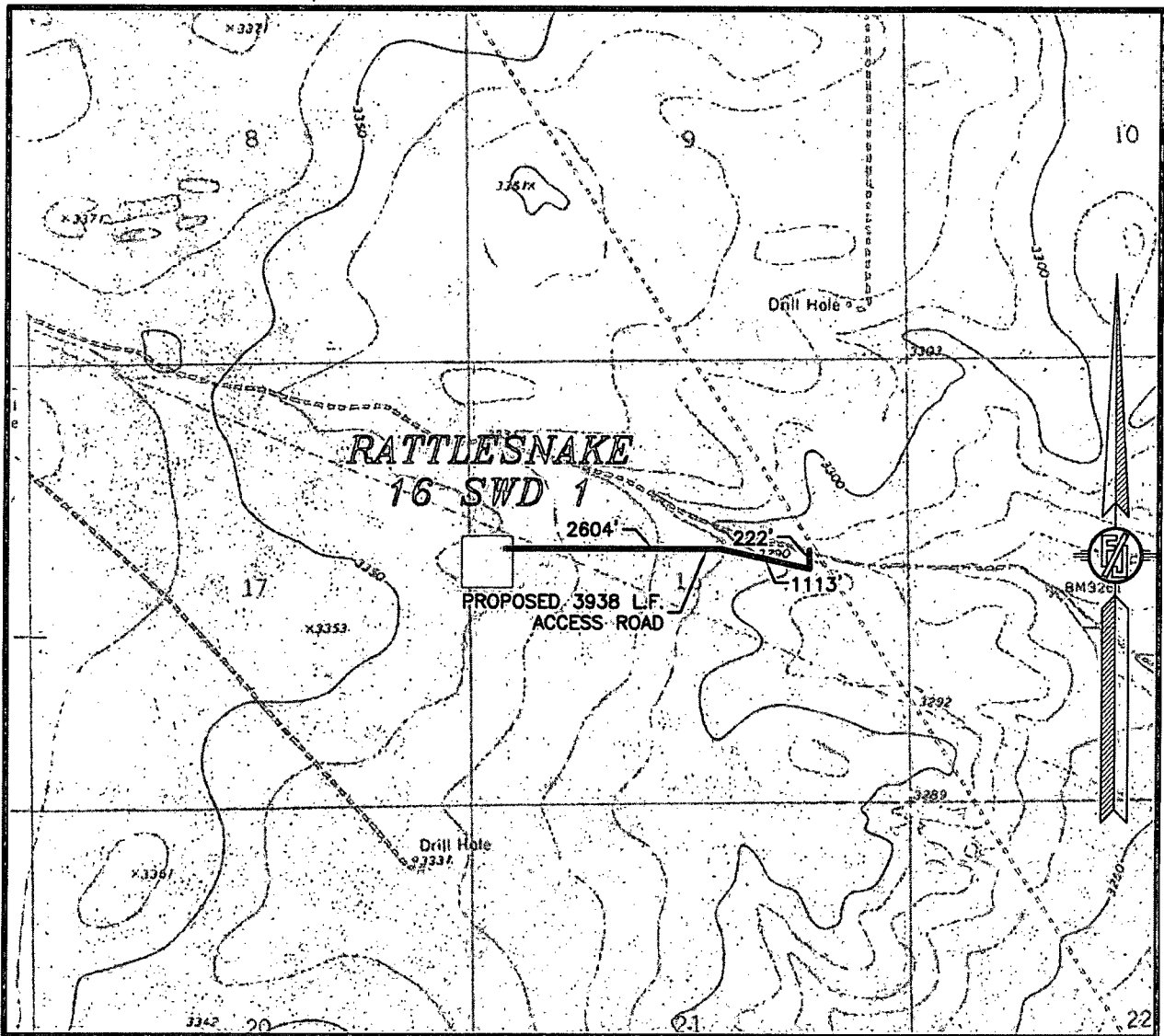
**DEVON ENERGY PRODUCTION COMPANY, L.P.
RATTLESNAKE 16 SWD 1
LOCATED 2375 FT. FROM THE NORTH LINE
AND 210 FT. FROM THE WEST LINE OF
SECTION 16, TOWNSHIP 26 SOUTH,
RANGE 34 EAST, N.M.P.M.
LEA COUNTY, STATE OF NEW MEXICO**

NOVEMBER 24, 2014

SURVEY NO. 2918B

MADRON SURVEYING, INC. 301 SOUTH CANAL CARLSBAD, NEW MEXICO
(575) 234-3341

SECTION 16, TOWNSHIP 26 SOUTH, RANGE 34 EAST, N.M.P.M.
LEA COUNTY, STATE OF NEW MEXICO
LOCATION VERIFICATION MAP



USGS QUAD MAP:
ANDREWS PLACE

NOT TO SCALE

DEVON ENERGY PRODUCTION COMPANY, L.P.
RATTLESNAKE 16 SWD 1

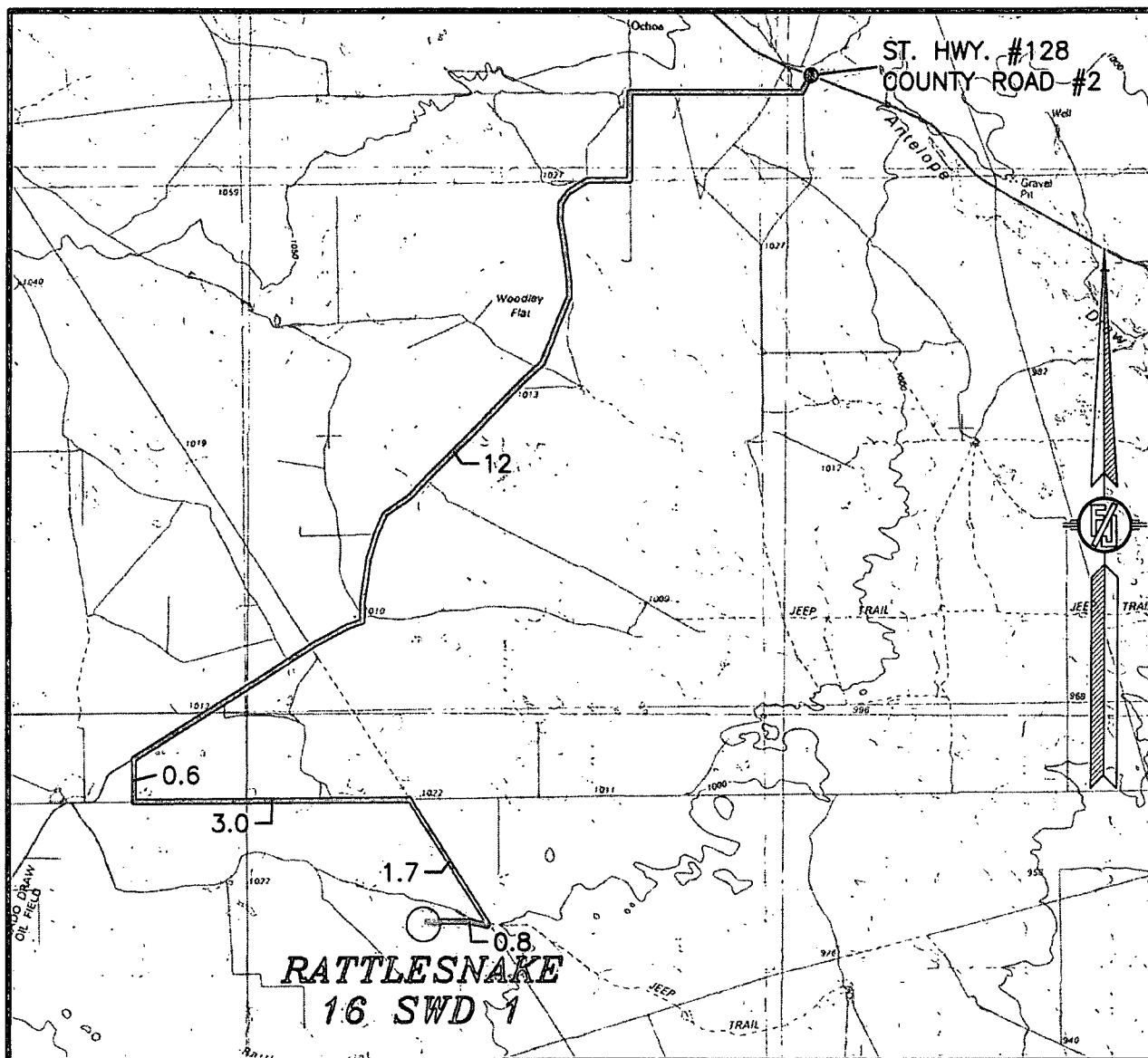
LOCATED 2375 FT. FROM THE NORTH LINE
AND 210 FT. FROM THE WEST LINE OF
SECTION 16, TOWNSHIP 26 SOUTH,
RANGE 34 EAST, N.M.P.M.
LEA COUNTY, STATE OF NEW MEXICO

NOVEMBER 24, 2014

SURVEY NO. 2918B

MADRON SURVEYING, INC. 301 SOUTH CANAL (575) 234-3341 CARLSBAD, NEW MEXICO

SECTION 16, TOWNSHIP 26 SOUTH, RANGE 34 EAST, N.M.P.M.
LEA COUNTY, STATE OF NEW MEXICO
VICINITY MAP



DISTANCES IN MILES

NOT TO SCALE

DIRECTIONS TO LOCATION

FROM STATE HWY. #128 AND COUNTY ROAD #2 (BATTLE AXE) GO SOUTH AND WEST ON COUNTY ROAD #2 12.0 MILES TO A CALICHE ROAD ON LEFT (SOUTH) TURN ON CALICHE ROAD GO SOUTH APPROX. 0.6 MILES TO A PIPELINE ROAD THEN TURN LEFT (EAST) ON PIPELINE ROAD GO APPROX. 3.0 MILES TO A PIPELINE ROAD ON RIGHT (SOUTH) TURN ON PIPELINE ROAD GO SOUTHEAST ON PIPELINE ROAD APPROX. 1.7 MILES TO ROAD LATH WITH RED AND WHITE FLAGGING ON RIGHT SIDE (WEST OF ROAD) FOLLOW ROAD LATHS APPROX. 0.8 MILES TO LOCATION

DEVON ENERGY PRODUCTION COMPANY, L.P.
RATTLESNAKE 16 SWD 1

LOCATED 2375 FT. FROM THE NORTH LINE
AND 210 FT. FROM THE WEST LINE OF
SECTION 16, TOWNSHIP 26 SOUTH,
RANGE 34 EAST, N.M.P.M.
LEA COUNTY, STATE OF NEW MEXICO

NOVEMBER 24, 2014

SURVEY NO. 2918B

MADRON SURVEYING, INC. 301 SOUTH CANAL (575) 234-3341

CARLSBAD, NEW MEXICO