

DISTRICT I
1625 N. French Dr., Hobbs, NM 88240
Phone: (575) 393-6161 Fax: (575) 393-0720

DISTRICT II
811 S. First St., Artesia, NM 88210
Phone: (575) 748-1283 Fax: (575) 748-9720

DISTRICT III
1000 Rio Brazos Road, Aztec, NM 87410
Phone: (505) 334-6178 Fax: (505) 334-6170

DISTRICT IV
1220 S. St. Francis Dr., Santa Fe, NM 87505
Phone: (505) 476-3460 Fax: (505) 476-3462

State of New Mexico
Energy, Minerals & Natural Resources Department
OIL CONSERVATION DIVISION
1220 South St. Francis Dr.
Santa Fe, New Mexico 87505

Form C-102
Revised August 1, 2011
one copy to appropriate District Office

HOBBS CO

JAN 07 2015

AMENDED REPORT

WELL LOCATION AND ACREAGE DEDICATION PLAT **RECEIVED**

API Number 30-025-	Pool Code 37580	Pool Name LEA-BONE SPRING, SOUTH
Property Code 313780	Property Name IGLOO 19 STATE	Well Number 7H
OGRID No. 249099	Operator Name CAZA OPERATING, LLC	Elevation 3687'

Surface Location

UL or lot No.	Section	Township	Range	Lot Idn	Feet from the	North/South line	Feet from the	East/West line	County
34	19	20-S	35-E		200	SOUTH	750	WEST	LEA

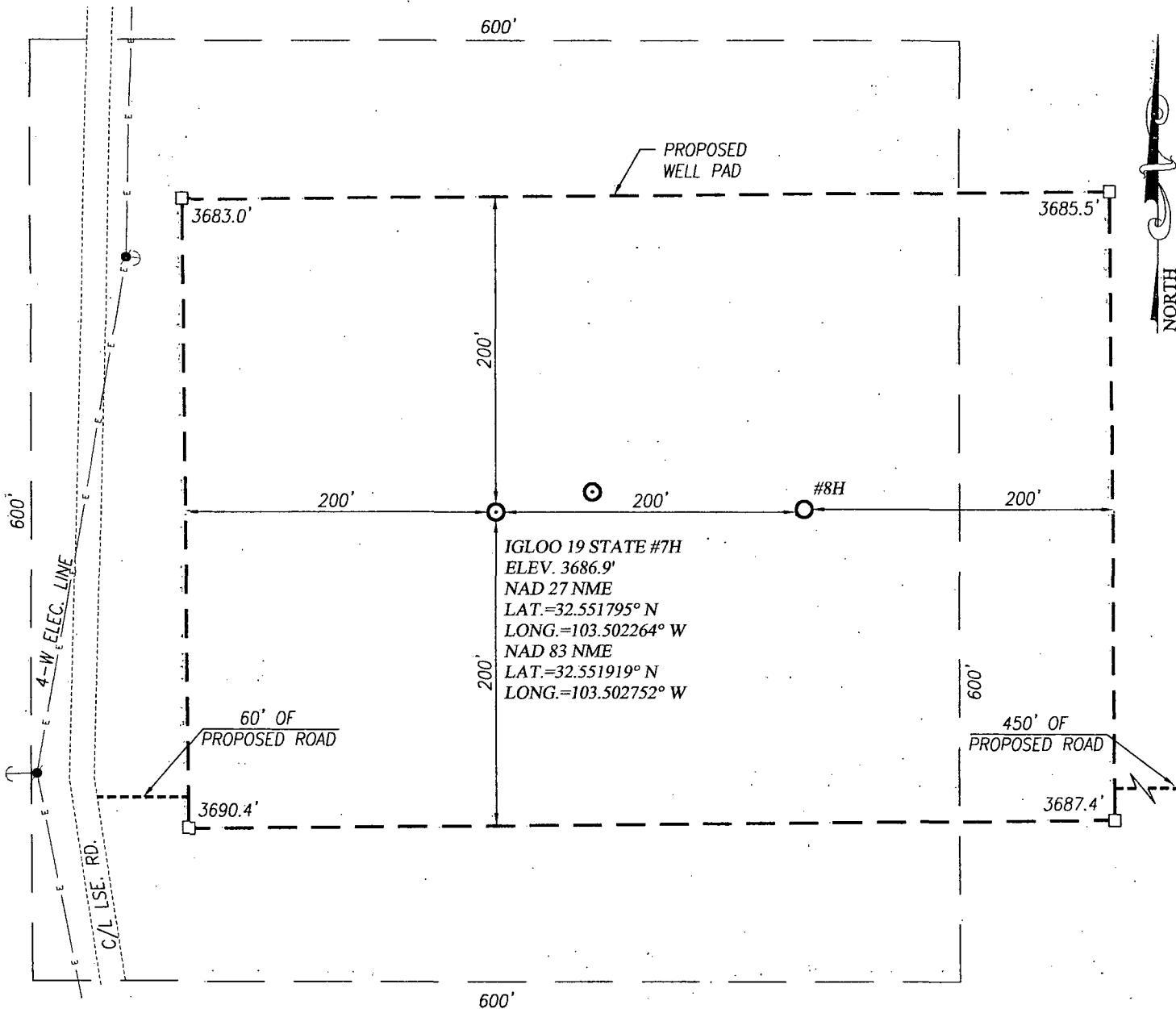
Bottom Hole Location If Different From Surface

UL or lot No.	Section	Township	Range	Lot Idn	Feet from the	North/South line	Feet from the	East/West line	County
43	19	20-S	35-E		2310	SOUTH	350	WEST	LEA
Dedicated Acres 80	Joint or Infill	Consolidation Code	Order No.						

NO ALLOWABLE WILL BE ASSIGNED TO THIS COMPLETION UNTIL ALL INTERESTS HAVE BEEN CONSOLIDATED OR A NON-STANDARD UNIT HAS BEEN APPROVED BY THE DIVISION

	<p>CORNER COORDINATES TABLE NAD 27 NME</p> <p>A - Y= 567879.7 N, X= 755313.0 E B - Y= 567895.2 N, X= 756633.0 E C - Y= 565259.7 N, X= 756652.9 E D - Y= 565247.8 N, X= 755327.4 E</p>		<p>OPERATOR CERTIFICATION</p> <p>I hereby certify that the information herein is true and complete to the best of my knowledge and belief, and that this organization either owns a working interest or unleased mineral interest in the land including the proposed bottom hole location or has a right to drill this well at this location pursuant to a contract with an owner of such mineral or working interest, or to a voluntary pooling agreement or a compulsory pooling order heretofore entered by the division.</p> <p><i>Joe T. Janica</i> Signature Date Joe T. Janica 01/07/15 Printed Name joejanica@valornet.com E-mail Address</p>
	<p>CORNER COORDINATES TABLE NAD 83 NME</p> <p>A - Y= 567942.2 N, X= 796494.3 E B - Y= 567957.7 N, X= 797814.3 E C - Y= 565322.1 N, X= 797834.3 E D - Y= 565310.2 N, X= 796508.8 E</p>		
	<p>BOTTOM HOLE LOCATION NAD 27 NME Y= 567560.4 N X= 755664.6 E LAT.=32.557592° N LONG.=103.503546° W</p> <p>BOTTOM HOLE LOCATION NAD 83 NME Y= 567622.9 N X= 796846.0 E LAT.=32.557716° N LONG.=103.504034° W</p>		
	<p>GEODETIC COORDINATES NAD 27 NME SURFACE LOCATION Y= 565454.6 N X= 756076.1 E LAT.=32.551795° N LONG.=103.502264° W</p> <p>GEODETIC COORDINATES NAD 83 NME SURFACE LOCATION Y= 565517.0 N X= 797257.5 E LAT.=32.551919° N LONG.=103.502752° W</p>		
<p>SURVEYOR CERTIFICATION</p> <p>I hereby certify that the well location shown on this plat was plotted from field notes of actual surveys made by me or under my supervision, and that the same is true and correct to the best of my belief.</p> <p>DECEMBER 1, 2014</p> <p>Date of Survey Signature & Seal of Professional Surveyor: RONALD J. EIDSON 3239 12/22/2014 Certificate Number Gary G. Eidson 12641 Ronald J. Eidson 3239 LSL JWSC W.O.: 14.11.1325</p>			

JAN 08 2015

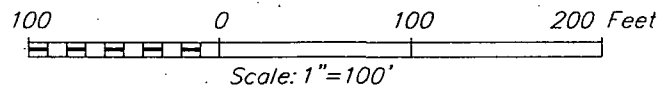


NOTE:

1) SEE "LOCATION VERIFICATION MAP"
FOR PROPOSED ROAD LOCATION.

DIRECTIONS TO IGLOO 19 STATE #7H:

FROM THE INTERSECTION OF HWY 62-180 AND CO. RD. H27
(MARATHON ROAD) GO SOUTH ON CO. RD. H27 APPROX. 5.5
MILES TURN LEFT ON CALICHE LSE. ROAD AND GO EAST
APPROX. 1.1 MILES TURN RIGHT AND GO SOUTH APPROX 0.3
MILES THE LOCATION STAKE IS 260' EAST.



CAZA OPERATING, LLC

IGLOO 19 STATE #7H WELL
LOCATED 200 FEET FROM THE SOUTH LINE
AND 750 FEET FROM THE WEST LINE OF SECTION 19,
TOWNSHIP 20 SOUTH, RANGE 35 EAST, N.M.P.M.,
LEA COUNTY, NEW MEXICO

PROVIDING SURVEYING SERVICES
SINCE 1946

JOHN WEST SURVEYING COMPANY

412 N. DAL PASO HOBBS, N.M. 88240
(575) 393-3117 www.jwsc.biz
TBPLS# 10021000

Survey Date: 12/1/14

CAD Date: 12/17/14

Drawn By: LSL

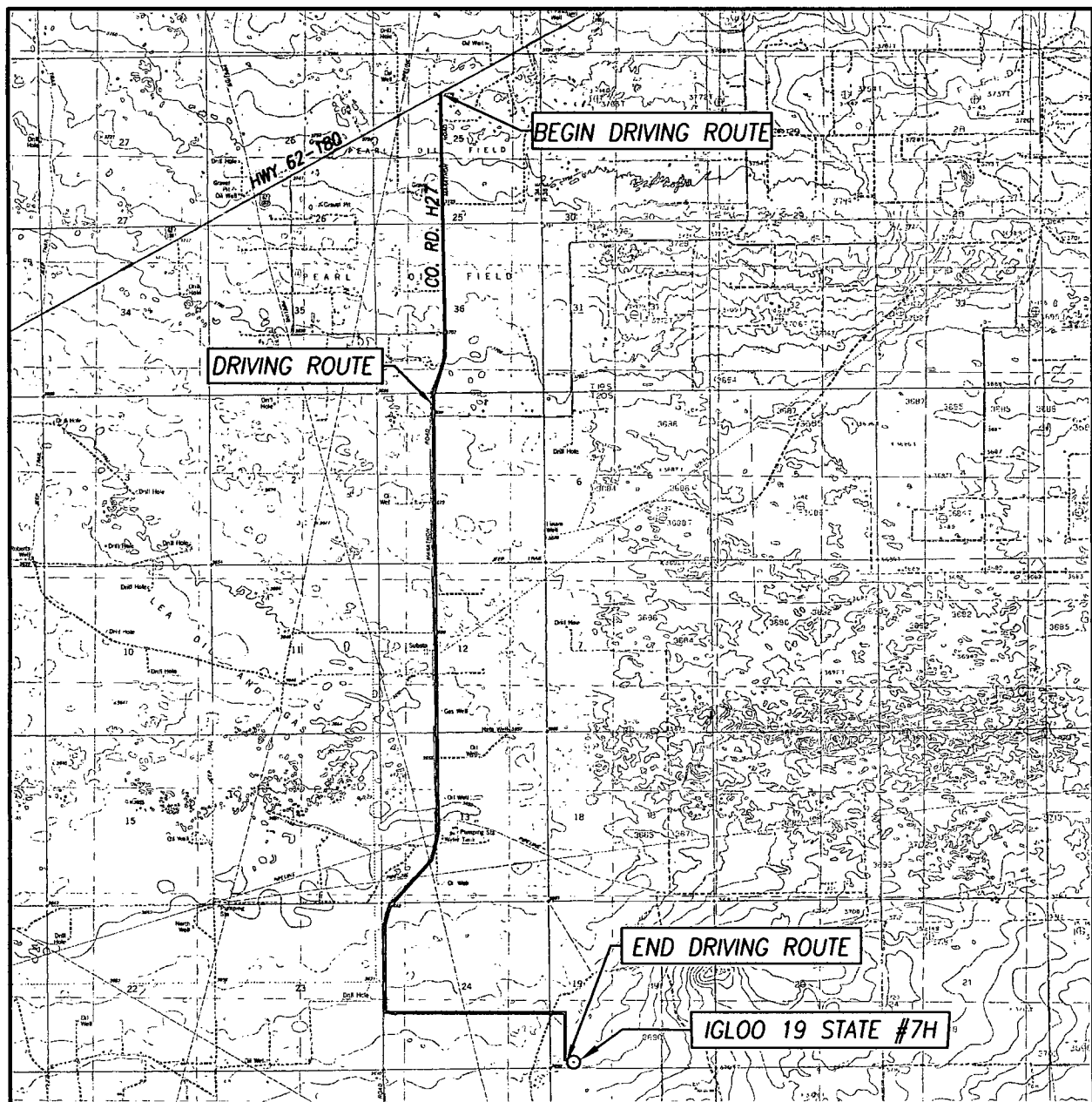
W.O. No.: 14111325

Rev: .

Rel. W.O.:

Sheet 1 of 1

LOCATION VERIFICATION MAP



SCALE: 1" = 5280'

CONTOUR INTERVAL:

MONUMENT SW, N.M. - 5'

LEA, N.M. - 10'

SEC. 19 TWP. 20-S RGE. 35-E

SURVEY N.M.P.M.

COUNTY LEA STATE NEW MEXICO

DESCRIPTION 200' FSL & 750' FWL

ELEVATION 3687'

OPERATOR CAZA OPERATING, LLC

LEASE IGLOO 19 STATE

U.S.G.S. TOPOGRAPHIC MAP
MONUMENT SW, N.M.

DIRECTIONS TO IGLOO 19 STATE #7H:

FROM THE INTERSECTION OF HWY 62-180 AND CO. RD. H27
(MARATHON ROAD) GO SOUTH ON CO. RD. H27 APPROX. 5.5 MILES
TURN LEFT ON CALICHE LSE. ROAD AND GO EAST APPROX. 1.1 MILES
TURN RIGHT AND GO SOUTH APPROX 0.3 MILES THE LOCATION STAKE
IS 260' EAST.



PROVIDING SURVEYING SERVICES
SINCE 1946

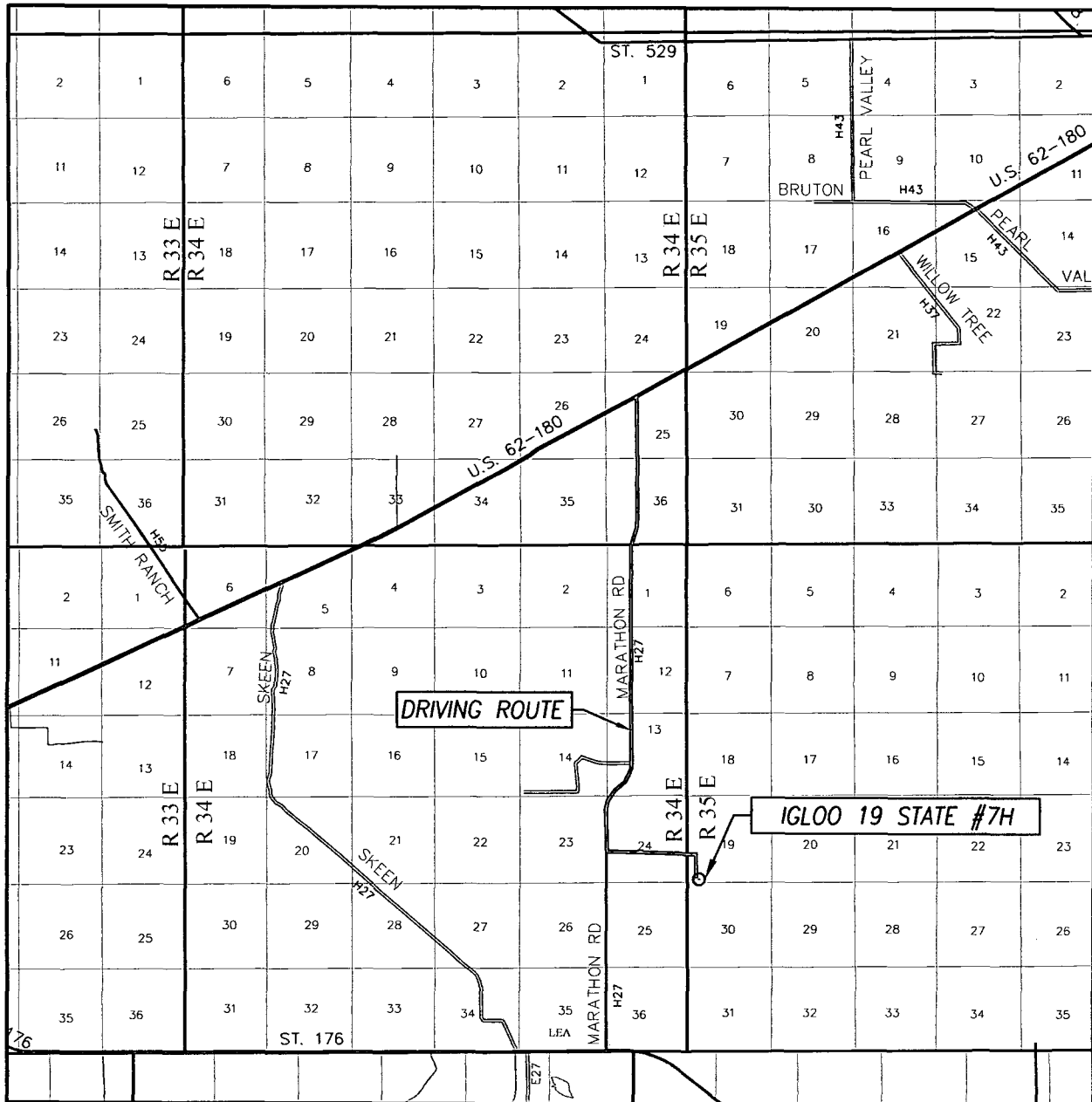
JOHN WEST SURVEYING COMPANY

412 N. DAL PASO HOBBS, N.M. 88240

(575) 393-3117 www.jwsc.biz


TBPLS# 10021000

VICINITY MAP



SCALE: 1" = 2 MILES
DRIVING ROUTE: SEE LOCATION VERIFICATION MAP

SEC. 19 TWP. 20-S RGE. 35-E
SURVEY N.M.P.M.
COUNTY LEA STATE NEW MEXICO
DESCRIPTION 200' FSL & 750' FWL
ELEVATION 3687'
OPERATOR CAZA OPERATING, LLC
LEASE IGLOO 19 STATE



PROVIDING SURVEYING SERVICES
SINCE 1946
JOHN WEST SURVEYING COMPANY
412 N. DAL PASO HOBBS, N.M. 88240
(575) 393-3117 www.jwsc.biz
TBPLS# 10021000

IGLOO 19 STATE #7H-API # 30 025

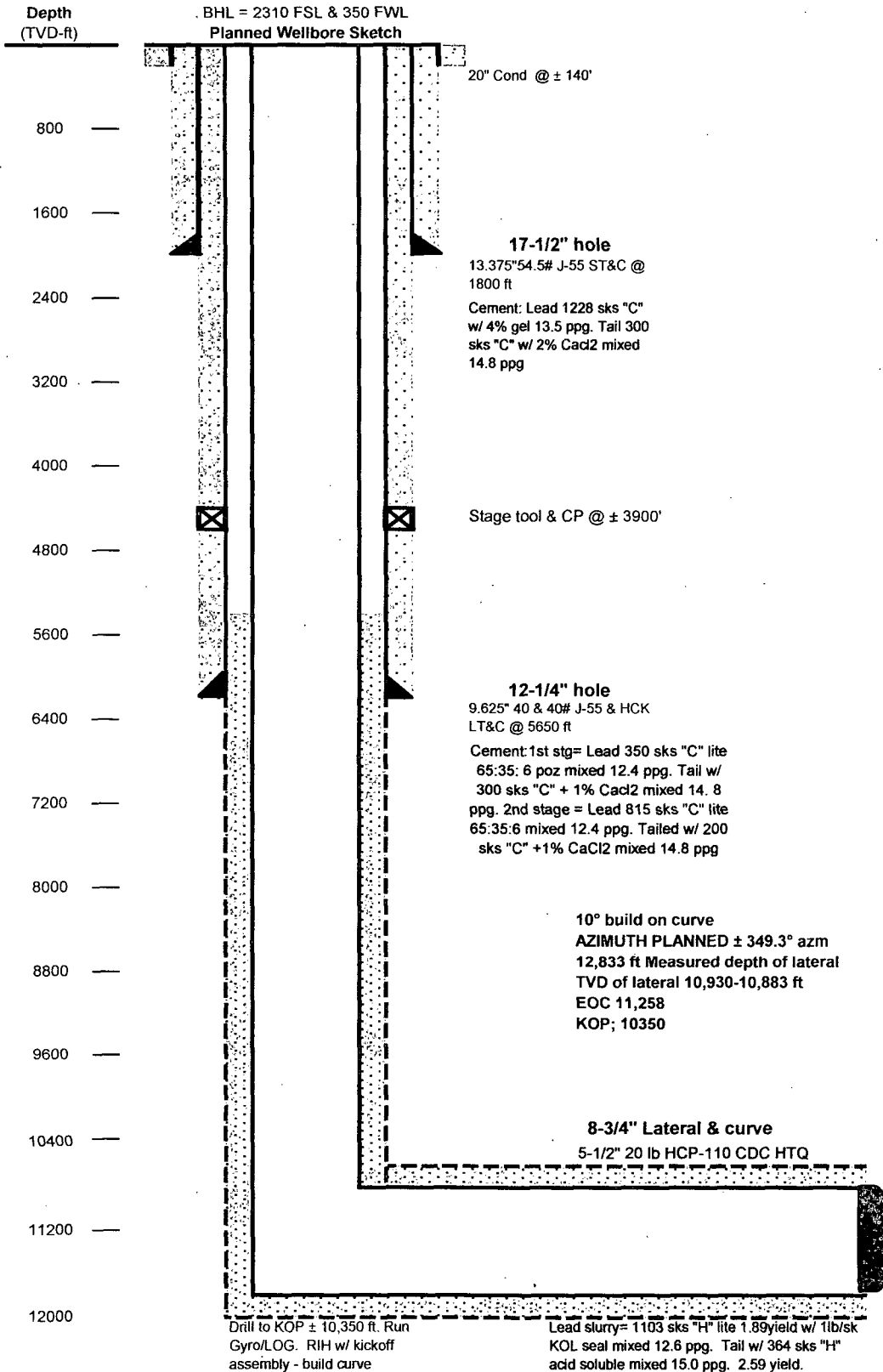
Location: SW/SW Section 19_T20S_R35E_Lea County, New Mexico



Caza
Oil & Gas, Inc.

SHL = 200 FSL & 750 FWL
BHL = 2310 FSL & 350 FWL

Planned Wellbore Sketch



JAN 07 2015

COPYRIGHT 1990 MITCHELL ENGINEERING, PO BOX 1492. GOLDEN, CO, 80402, USA. (303) 273 3744

LONG's METHOD OF SURVEY COMPUTATION

RECEIVED

OBLIQUE CIRCULAR ARC INTERPOLATION

6000	MD OF INTERPOLATION DEPTH,(feet)
#N/A	TVD COORDINATE OF THE DEPTH (feet)
#N/A	N/S COORDINATE OF DEPTH (feet)
#N/A	E/W COORDINATE OF DEPTH (feet)

3 D DISTANCE BETWEEN STATION A AND STATION B

DISTANCE TABLE

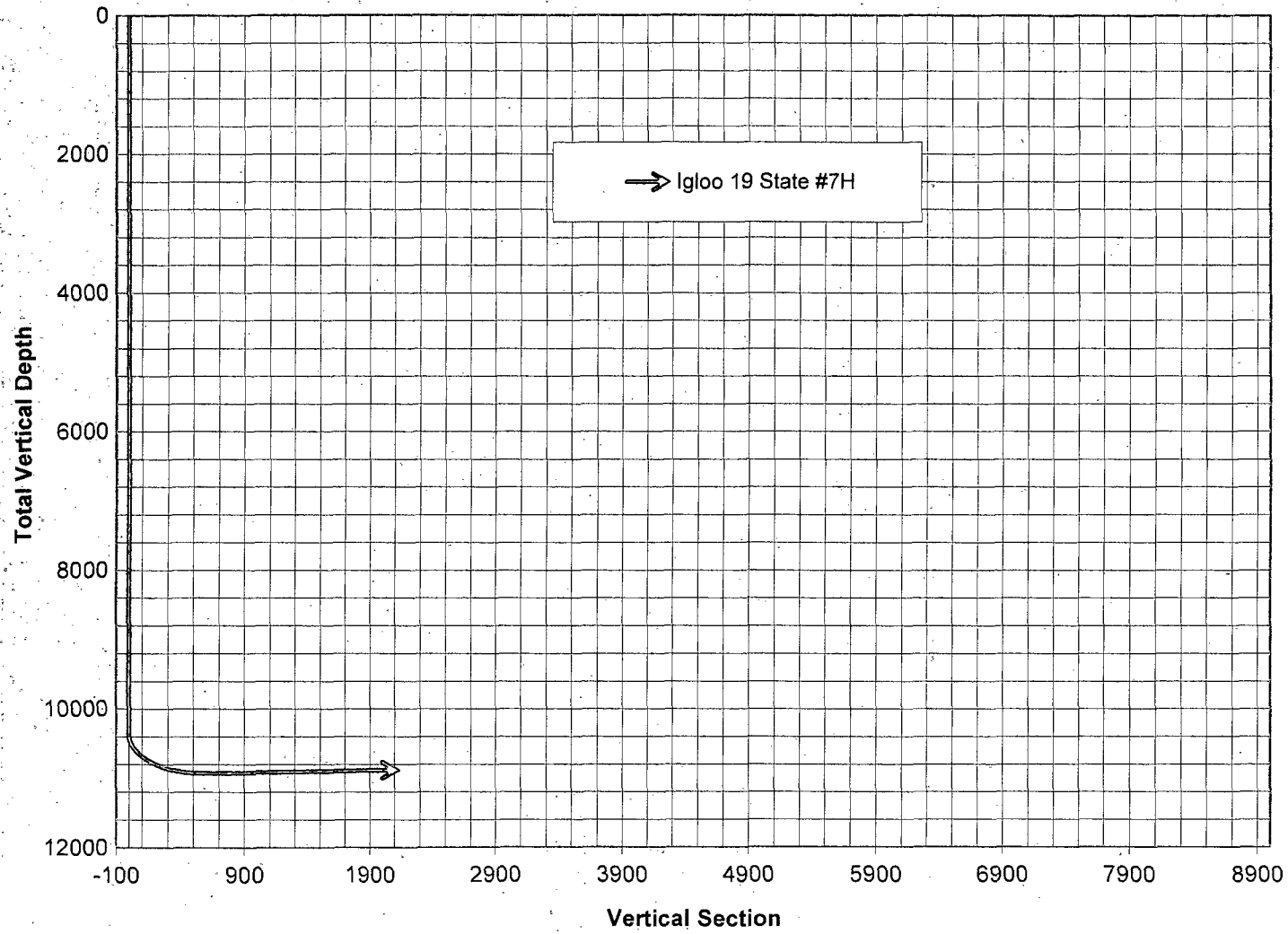
STATION A	STATION B
400.00	600.00
300.00	400.00
100.00	300.00
300.00	ft

TABLE OF SURVEY STATIONS

Calculator =

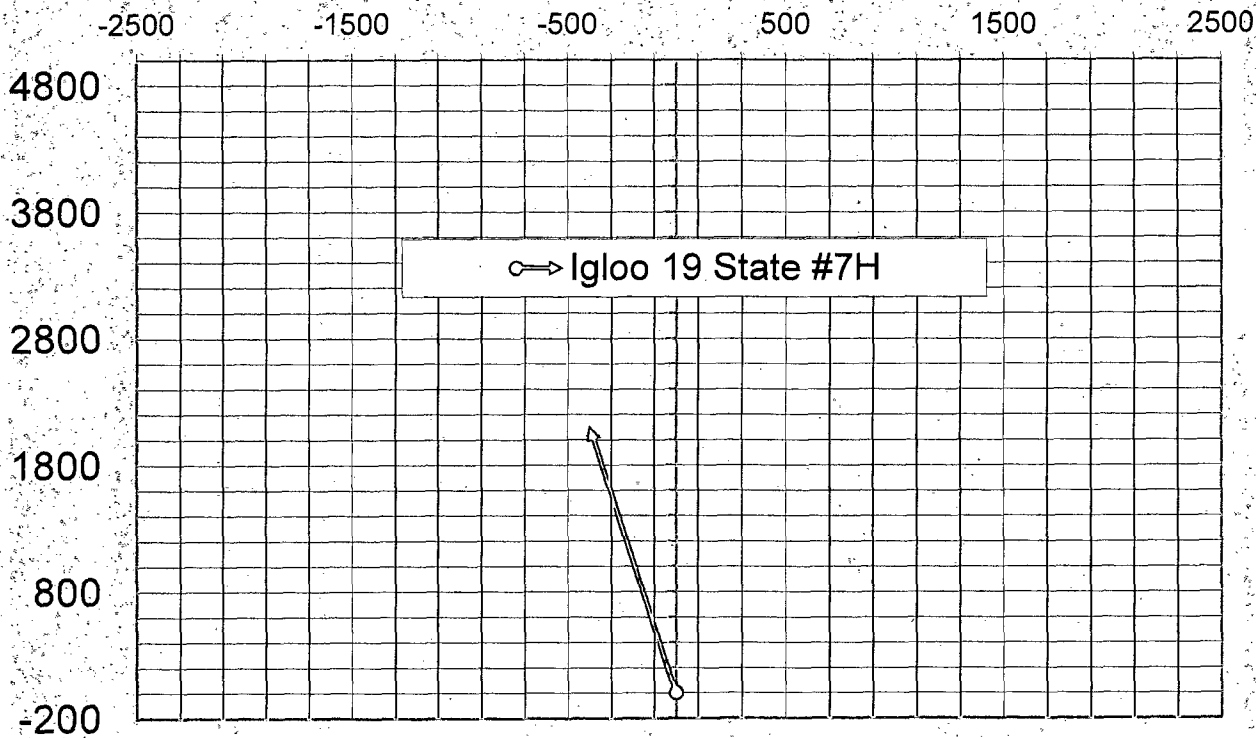
STA #	ΔMD ft	INCL deg	AZIM deg	MD ft	TVD ft	N+/S- ft	E+/W- ft	DLS deg/100FT
1	TIE POINT =>	0	0	10358.00	10358.00	0.00	0.00	-
2	100	10	349.26	10458.00	10457.49	8.55	-1.62	10.00
3	100	20	349.26	10558.00	10553.96	33.95	-6.44	10.00
4	100	30	349.26	10658.00	10644.48	75.42	-14.30	10.00
5	100	40	349.26	10758.00	10726.29	131.70	-24.98	10.00
6	100	50	349.26	10858.00	10796.91	201.08	-38.14	10.00
7	100	60	349.26	10958.00	10854.20	281.46	-53.39	10.00
8	100	70	349.26	11058.00	10896.40	370.39	-70.25	10.00
9	100	80	349.26	11158.00	10922.25	465.17	-88.23	10.00
10	100	90	349.26	11258.00	10930.96	562.92	-106.77	10.00
11	17	91.77	349.26	11275.00	10930.70	579.62	-109.94	10.41
12	100	91.77	349.26	11375.00	10927.61	677.82	-128.57	0.00
13	100	91.77	349.26	11475.00	10924.52	776.02	-147.19	0.00
14	100	91.77	349.26	11575.00	10921.43	874.23	-165.82	0.00
15	100	91.77	349.26	11675.00	10918.34	972.43	-184.45	0.00
16	100	91.77	349.26	11775.00	10915.25	1070.63	-203.07	0.00
17	100	91.77	349.26	11875.00	10912.16	1168.83	-221.70	0.00
18	100	91.77	349.26	11975.00	10909.07	1267.03	-240.32	0.00
19	100	91.77	349.26	12075.00	10905.99	1365.23	-258.95	0.00
20	100	91.77	349.26	12175.00	10902.90	1463.43	-277.58	0.00
21	100	91.77	349.26	12275.00	10899.81	1561.63	-296.20	0.00
22	100	91.77	349.26	12375.00	10896.72	1659.84	-314.83	0.00
23	100	91.77	349.26	12475.00	10893.63	1758.04	-333.46	0.00
24	100	91.77	349.26	12575.00	10890.54	1856.24	-352.08	0.00
25	100	91.77	349.26	12675.00	10887.45	1954.44	-370.71	0.00
26	100	91.77	349.26	12775.00	10884.36	2052.64	-389.34	0.00
27	58	91.77	349.26	12833.00	10882.57	2109.60	-400.14	0.00
28								
29								
30								
31								
32								
33								
34								
35								
36								
37								
38								
39								
40								
41								
42								
43								
44								
45								
46								
47								
48								
49								
50								
51								

Igloo 19 State # 7H



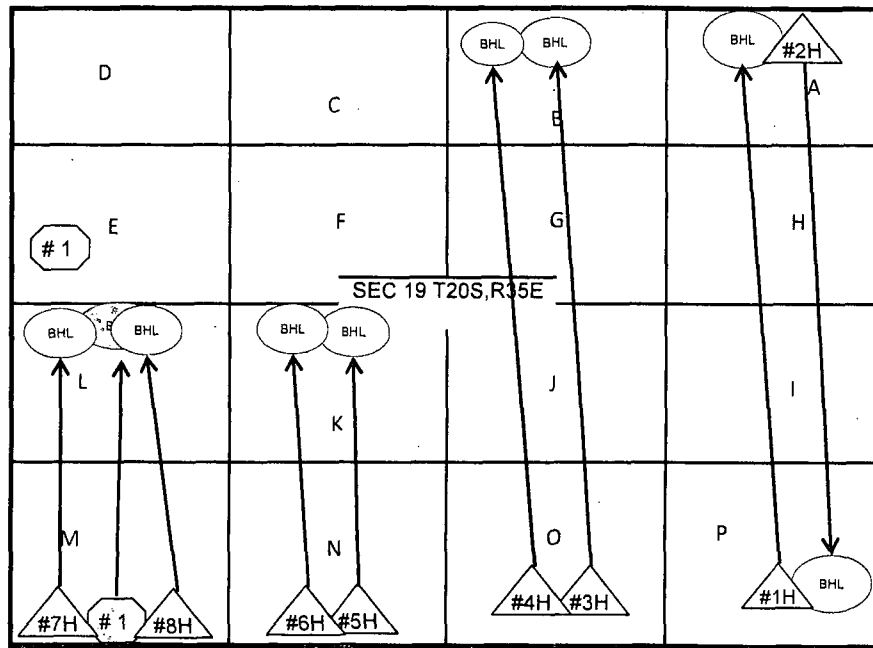
Horizontal Plane Footage +East/-West

Footage + North/- South



IGLOO 19 STATE 7H _ 2nd Bone Springs Horizontal

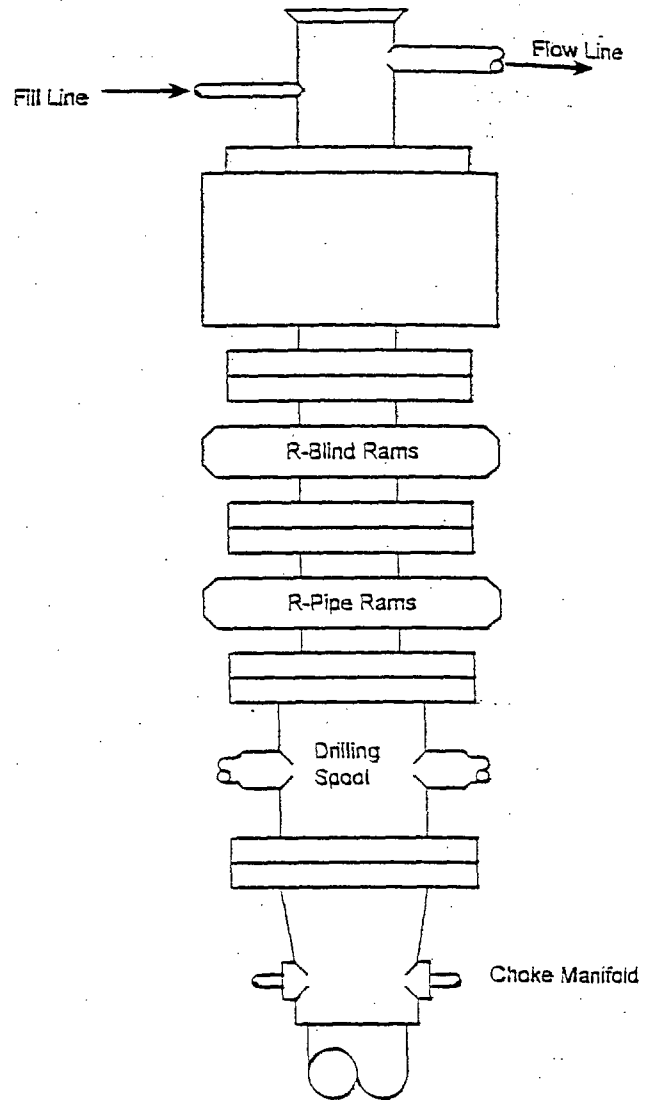
SW/SW Sec 19, T-20-S, R-35-E, Lea County, New Mexico



Well Name	Surface Location	Depth and Strata	Current Prod Zone	Plan Bottom Hole Location	
IGLOO 19 STATE #7H	200 FSL & 750 FWL	TD = 14,900 2nd Bone Sprgs	Not Drilled	2310 FSL & 350 FEL	Caza Operating, LLC
IGLOO 19 STATE #1H	200 FSL & 660 FEL	TD = 14,900 2nd Bone Sprgs	Not Drilled	330 FNL & 950 FEL	Caza Operating, LLC
IGLOO 19 STATE #3H	200 FSL & 1800 FEL	TD = 16,000 3rd Bone Sprgs	Not Drilled	330 FNL & 1980 FEL	Caza Operating, LLC
IGLOO 19 STATE #4H	200 FSL & 2000 FEL	TD = 14,900 2nd Bone Sprgs	Not Drilled	330 FNL & 2200 FEL	Caza Operating, LLC
IGLOO 19 STATE #5H	200 FSL & 2000 FWL	TD = 16,000 3rd Bone Sprgs	Not Drilled	330 FNL & 1980 FWL	Caza Operating, LLC
IGLOO 19 STATE #2H	200 FNL & 660 FEL	TD = 16,000 ft 3rd Bone Sprgs	Drilled	330 FSL & 350 FEL	Caza Operating, LLC
IGLOO 19 STATE #6H	200 FSL & 1800 FWL	TD = 14,900 2nd Bone Sprgs	Not Drilled	2310 FSL & 1660 FWL	Caza Operating, LLC
IGLOO 19 STATE #8H	200 FSL & 950 FWL	TD = 16,000 3rd Bone Sprgs	Not Drilled	2310 FSL & 660 FWL	Caza Operating, LLC
ICE CHEST BVC STATE COM #1H	100 FSL & 660 FWL	TD = 12,685 3rd Bone Sprgs	Not Drilled	2310 FSL & 660 FWL	Yates expired Permit

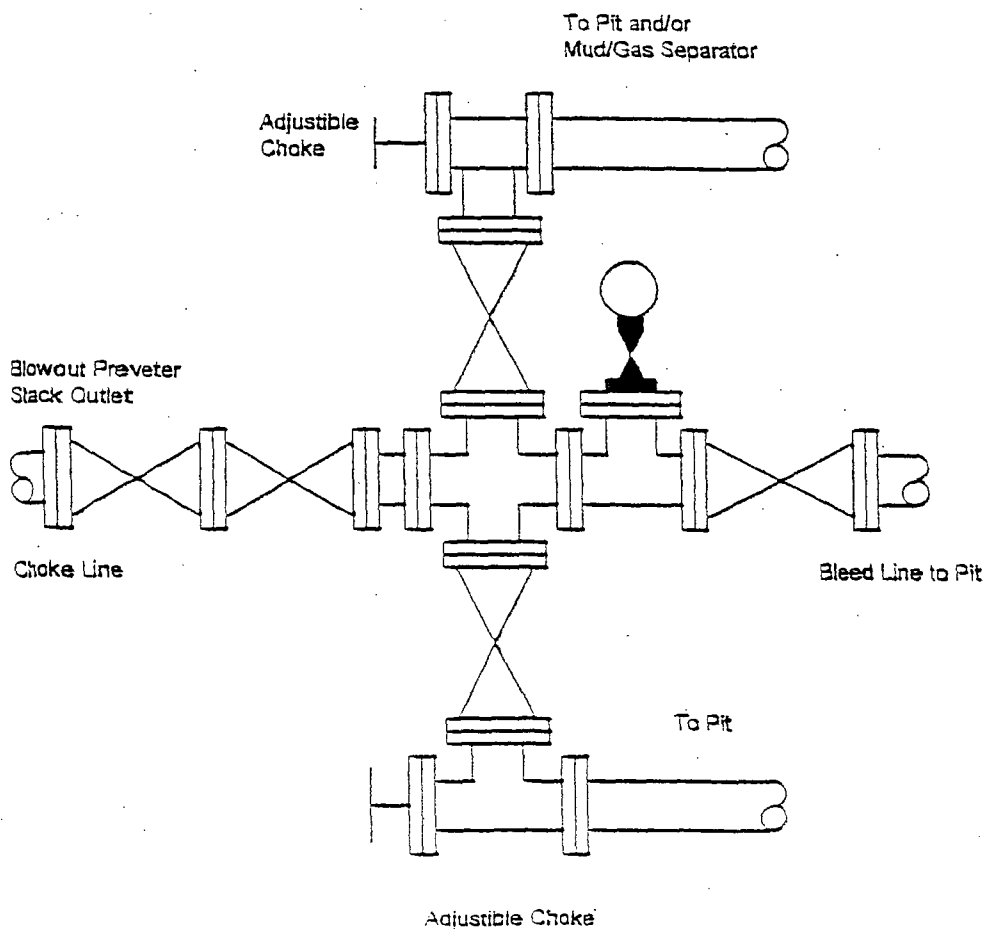
BLOWOUT PREVENTER SYSTEM

5000 PSI



Type 1500 SERIES
5000 psi WP

Choke Manifold Assembly for 5M WP System





Closed Loop Drilling System

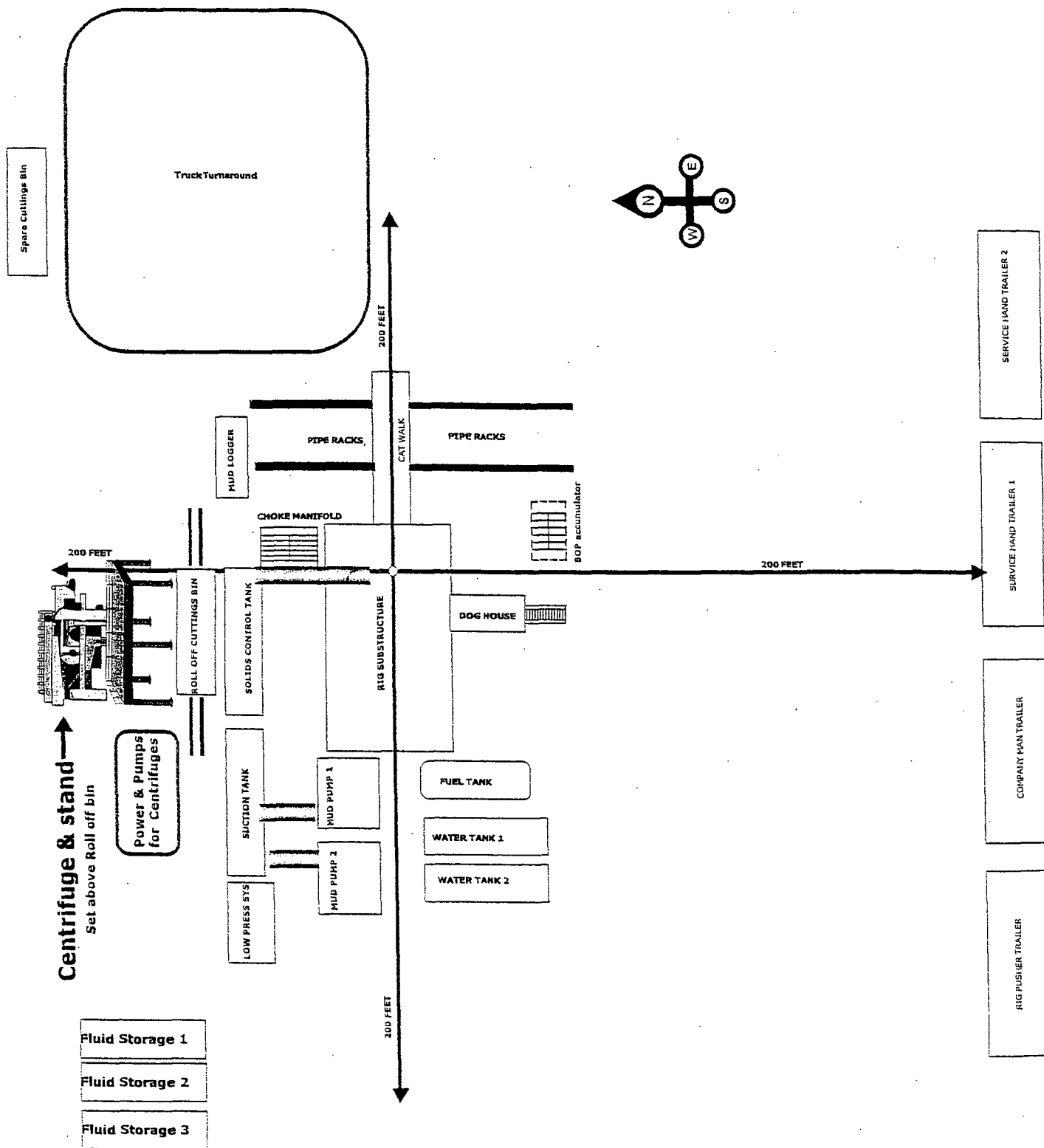
Operations and Maintenance Plan

Closed Loop equipment will be inspected and monitored closely on a daily basis by each drilling rig Tour and by those hired specifically to operate the equipment. Any leak or release detected will be repaired immediately and the proper NMOCD official will be notified within the 48 hr requirement. A large release will require Caza Operating, LLC representatives to contact BLM immediately at the Carlsbad office "575 234 5972" Hobbs "575 393 3612" as well as the NMOCD @ 575 393 6161 as stated by NMOCD rule 116.

Closure Plan

During and after drilling operations, liquids (which apply), all drill cuttings and drilling fluids will be hauled and disposed of at the R-360 disposal (permit number NM 01-0006) located about 30 miles East of Carlsbad, New Mexico. An alternate approved disposal site has been selected Parabo disposal "Sundance" which is 4 miles East of Eunice (permit number NM 01-0003). The Second site would be used in the event of economics or physical problems with R-360 disposal.

Closed Loop Oil Well



Note: The Rig and Closed System Company for this well have not been selected thus the set up shown is simply generic.