

DISTRICT I  
1625 N. French Dr., Hobbs, NM 88240  
Phone (505) 393-6161 Fax: (505) 393-0720

DISTRICT II  
811 S. First St., Artesia, NM 88210  
Phone (505) 748-1283 Fax: (505) 748-9720

DISTRICT III  
1000 Rio Brazos Rd., Aztec, NM 87410  
Phone (505) 334-6178 Fax: (505) 334-8170

DISTRICT IV  
1220 S. St. Francis Dr., Santa Fe, NM 87505  
Phone (505) 476-3460 Fax: (505) 476-3462

State of New Mexico  
Energy, Minerals and Natural Resources Department

**OIL CONSERVATION DIVISION**  
1220 South St. Francis Dr.  
Santa Fe, New Mexico 87505

HOBBSOCD

JAN 14 2015

Form C-102  
Revised August 1, 2011

Submit one copy to appropriate  
District Office

**WELL LOCATION AND ACREAGE DEDICATION PLAT**

☐ AMENDED REPORT

API Number <b>30-025-42364</b>	Pool Code <b>49210</b>	Pool Name <b>Paddock</b>
Property Code <b>40164</b>	Property Name <b>ELLIOTT EM 20 FEDERAL</b>	Well Number <b>2</b>
OGRID No. <b>873</b>	Operator Name <b>APACHE CORPORATION</b>	Elevation <b>3394'</b>

**Surface Location**

UL or lot No.	Section	Township	Range	Lot Idn	Feet from the	North/South line	Feet from the	East/West line	County
E	20	22 S	37 E		1750	NORTH	845	WEST	LEA

**Bottom Hole Location If Different From Surface**

UL or lot No.	Section	Township	Range	Lot Idn	Feet from the	North/South line	Feet from the	East/West line	County
E	20	22 S	37 E		2310	NORTH	990	WEST	LEA

Dedicated Acres <b>40</b>	Joint or Infill	Consolidation Code	Order No.
------------------------------	-----------------	--------------------	-----------

NO ALLOWABLE WILL BE ASSIGNED TO THIS COMPLETION UNTIL ALL INTERESTS HAVE BEEN CONSOLIDATED  
OR A NON-STANDARD UNIT HAS BEEN APPROVED BY THE DIVISION

<p>N: 505466.4 E: 851975.3 NAD 27</p> <p><b>SURFACE LOCATION</b> Lat - N 32°22'47.28" Long - W 103°11'27.18" NMSPCE- N 503786.624 E 894025.734 (NAD-83) Lat - N 32°22'46.84" Long - W 103°11'25.50" NMSPCE- N 503726.836 E 852840.608 (NAD-27)</p> <p><b>PROPOSED BOTTOM HOLE LOCATION</b> Lat - N 32°22'41.75" Long - W 103°11'25.48" NMSPCE- N 503228.5 E 894177.3 (NAD-83) Lat - N 32°22'41.30" Long - W 103°11'23.80" NMSPCE- N 503168.7 E 852992.2 (NAD-27)</p> <p>N: 500178.4 E: 852037.1 NAD 27</p>	<p>N: 505529.2 E: 857242.0 NAD 27</p> <p><b>OPERATOR CERTIFICATION</b> I hereby certify that the information contained herein is true and complete to the best of my knowledge and belief, and that this organization either owns a working interest or unleased mineral interest in the land including the proposed bottom hole location or has a right to drill this well at this location pursuant to a contract with an owner of such a mineral or working interest, or to a voluntary pooling agreement or a compulsory pooling order heretofore entered by the division. <b>Sorina L. Flores</b> 1/21/13 Signature Date <b>Sorina L. Flores</b> Printed Name <b>Sorina.Flores@apachecorp.com</b> Email Address</p> <p><b>SURVEYOR CERTIFICATION</b> I hereby certify that the well location shown on this plat was plotted from field notes of actual surveys made by me or under my supervision, and that the same is true and correct to the best of my belief.  Date Surveyed Signature &amp; Seal of Professional Surveyor Certificate No. Gary L. Jones 7977 BASIN SURVEYS 29150</p> <p>N: 500262.5 E: 857284.1 NAD 27</p>
--	---

JAN 20 2015

## DISTRICT I

1625 N. French Dr., Hobbs, NM 88240  
Phone (575) 393-6161 Fax: (575) 393-0720

## DISTRICT II

811 S. First St., Artesia, NM 88210  
Phone (505) 748-1283 Fax: (505) 748-8720

## DISTRICT III

1000 Rio Brazos Rd., Aztec, NM 87410  
Phone (505) 334-6178 Fax: (505) 334-6170

## DISTRICT IV

1220 S. St. Francis Dr., Santa Fe, NM 87505  
Phone (505) 476-3460 Fax: (505) 476-3462

State of New Mexico  
Energy, Minerals and Natural Resources Department

## OIL CONSERVATION DIVISION

1220 South St. Francis Dr.  
Santa Fe, New Mexico 87505

Form C-102

Revised August 1, 2011

Submit one copy to appropriate  
District Office

## WELL LOCATION AND ACREAGE DEDICATION PLAT

☐ AMENDED REPORT

API Number <b>30-025-42764</b>	Pool Code <b>6660</b>	Pool Name <b>Blinbry D &amp; G (O)</b>
Property Code <b>40164</b>	Property Name <b>ELLIOTT EM 20 FEDERAL</b>	Well Number <b>2</b>
OGRID No. <b>873</b>	Operator Name <b>APACHE CORPORATION</b>	Elevation <b>3394'</b>

## Surface Location

UL or lot No.	Section	Township	Range	Lot Idn	Feet from the	North/South line	Feet from the	East/West line	County
E	20	22 S	37 E		1750	NORTH	845	WEST	LEA

## Bottom Hole Location If Different From Surface

UL or lot No.	Section	Township	Range	Lot Idn	Feet from the	North/South line	Feet from the	East/West line	County
E	20	22 S	37 E		2310	NORTH	990	WEST	LEA

Dedicated Acres	Joint or Infill	Consolidation Code	Order No.
<b>40</b>			

NO ALLOWABLE WILL BE ASSIGNED TO THIS COMPLETION UNTIL ALL INTERESTS HAVE BEEN CONSOLIDATED  
OR A NON-STANDARD UNIT HAS BEEN APPROVED BY THE DIVISION

<p>N: 505466.4 E: 851975.3 NAD 27</p> <p>1750' 2310'</p> <p>845'</p> <p>990'</p> <p>SL</p> <p>OBH</p> <p><b>SURFACE LOCATION</b> Lat - N 32°22'47.28" Long - W 103°11'27.18" NMSPCE- N 503786.624 E 894025.734 (NAD-83) Lat - N 32°22'46.84" Long - W 103°11'25.50" NMSPCE- N 503726.836 E 852840.608 (NAD-27)</p> <p><b>PROPOSED BOTTOM HOLE LOCATION</b> Lat - N 32°22'41.75" Long - W 103°11'25.48" NMSPCE- N 503228.5 E 894177.3 (NAD-83) Lat - N 32°22'41.30" Long - W 103°11'23.80" NMSPCE- N 503168.7 E 852992.2 (NAD-27)</p> <p>N: 500178.4 E: 852037.1 NAD 27</p>	<p>N: 505529.2 E: 857242.0 NAD 27</p> <p><b>OPERATOR CERTIFICATION</b> I hereby certify that the information contained herein is true and complete to the best of my knowledge and belief, and that this organization either owns a working interest or unleased mineral interest in the land including the proposed bottom hole location or has a right to drill this well at this location pursuant to a contract with an owner of such a mineral or working interest, or to a voluntary pooling agreement or a compulsory pooling order heretofore entered by the division. <b>Sorina L. Flores</b> 11/21/13 Signature Date <b>Sorina L. Flores</b> Printed Name <b>sorina.flores@apachecorp.com</b> Email Address</p> <p><b>SURVEYOR CERTIFICATION</b> I hereby certify that the well location shown on this plat was plotted from field notes of actual surveys made by me or under my supervision, and that the same is true and correct to the best of my belief. <b>GARY L. JONES</b> Date Surveyed Signature &amp; Seal of Professional Surveyor Certificate No. Gary L. Jones 7977 BASIN SURVEYS 29150</p> <p>N: 500262.5 E: 857284.1 NAD 27</p>
--	--

DISTRICT I  
1625 N. French Dr., Hobbs, NM 88240  
Phone (575) 393-6161 Fax: (575) 393-0720

DISTRICT II  
811 S. First St., Artesia, NM 88210  
Phone (505) 748-1283 Fax: (505) 748-8720

DISTRICT III  
1000 Rio Brazos Rd., Aztec, NM 87410  
Phone (505) 334-6178 Fax: (505) 334-6170

DISTRICT IV  
1220 S. St. Francis Dr., Santa Fe, NM 87505  
Phone (505) 476-3480 Fax: (505) 476-3462

State of New Mexico  
Energy, Minerals and Natural Resources Department

Form C-102  
Revised August 1, 2011

Submit one copy to appropriate  
District Office

OIL CONSERVATION DIVISION

1220 South St. Francis Dr.  
Santa Fe, New Mexico 87505

WELL LOCATION AND ACREAGE DEDICATION PLAT

☐ AMENDED REPORT

API Number <b>30-025-42364</b>	Pool Code <b>60240</b>	Pool Name <b>Tubb OG (O)</b>
Property Code <b>40164</b>	Property Name <b>ELLIOTT EM 20 FEDERAL</b>	Well Number <b>2</b>
OGRID No. <b>873</b>	Operator Name <b>APACHE CORPORATION</b>	Elevation <b>3394'</b>

Surface Location

UL or lot No.	Section	Township	Range	Lot Idn	Feet from the	North/South line	Feet from the	East/West line	County
E	20	22 S	37 E		1750	NORTH	845	WEST	LEA

Bottom Hole Location If Different From Surface

UL or lot No.	Section	Township	Range	Lot Idn	Feet from the	North/South line	Feet from the	East/West line	County
E	20	22 S	37 E		2310	NORTH	990	WEST	LEA

Dedicated Acres <b>40</b>	Joint or Infill	Consolidation Code	Order No.
------------------------------	-----------------	--------------------	-----------

NO ALLOWABLE WILL BE ASSIGNED TO THIS COMPLETION UNTIL ALL INTERESTS HAVE BEEN CONSOLIDATED  
OR A NON-STANDARD UNIT HAS BEEN APPROVED BY THE DIVISION

N: 505466.4 E: 851975.3 NAD 27	<p><b>SURFACE LOCATION</b> Lat - N 32°22'47.28" Long - W 103°11'27.18" NMSPC - N 503786.624 E 894025.734 (NAD-83)</p> <p><b>PROPOSED BOTTOM HOLE LOCATION</b> Lat - N 32°22'41.75" Long - W 103°11'25.48" NMSPC - N 503228.5 E 894177.3 (NAD-83)</p> <p>Lat - N 32°22'41.30" Long - W 103°11'23.80" NMSPC - N 503168.7 E 852992.2 (NAD-27)</p>	N: 505529.2 E: 857242.0 NAD 27	<p><b>OPERATOR CERTIFICATION</b></p> <p>I hereby certify that the information contained herein is true and complete to the best of my knowledge and belief, and that this organization either owns a working interest or unleased mineral interest in the land including the proposed bottom hole location or has a right to drill this well at this location pursuant to a contract with an owner of such a mineral or working interest, or to a voluntary pooling agreement or a compulsory pooling order heretofore entered by the division.</p> <p><b>Sorina L. Flores 11/21/13</b> Signature Date</p> <p><b>Sorina L. Flores</b> Printed Name</p> <p><b>sorina.flores@apachecorp.com</b> Email Address</p> <p><b>SURVEYOR CERTIFICATION</b></p> <p>I hereby certify that the well location shown on this plat was plotted from field notes of actual surveys made by me or under my supervision, and that the same is true and correct to the best of my belief.</p> <p><b>GARY L. JONES 11/21/13</b> Date Surveyed</p> <p><b>GARY L. JONES</b> Signature &amp; Seal of Professional Surveyor</p> <p>Certificate No. Gary L. Jones 7977</p> <p><b>BASIN SURVEYS 29150</b></p>
--------------------------------------	--	--------------------------------------	--

## DISTRICT I

1625 N. French Dr., Hobbs, NM 88240  
Phone (575) 393-6161 Fax: (575) 393-0720

## DISTRICT II

811 S. First St., Artesia, NM 88210  
Phone (575) 748-1283 Fax: (575) 748-8720

## DISTRICT III

1000 Rio Brazos Rd., Aztec, NM 87410  
Phone (505) 334-6178 Fax: (505) 334-6170

## DISTRICT IV

1220 S. St. Francis Dr., Santa Fe, NM 87505  
Phone (505) 476-3490 Fax: (505) 476-3492

State of New Mexico  
Energy, Minerals and Natural Resources Department

Form C-102

Revised August 1, 2011

Submit one copy to appropriate  
District Office

## OIL CONSERVATION DIVISION

1220 South St. Francis Dr.  
Santa Fe, New Mexico 87505

## WELL LOCATION AND ACREAGE DEDICATION PLAT

☐ AMENDED REPORT

API Number <b>30-025-42364</b>	Pool Code <b>19190</b>	Pool Name <b>DrinKard</b>
Property Code <b>40164</b>	Property Name <b>ELLIOTT EM 20 FEDERAL</b>	Well Number <b>2</b>
OGRID No. <b>873</b>	Operator Name <b>APACHE CORPORATION</b>	Elevation <b>3394'</b>

## Surface Location

UL or lot No.	Section	Township	Range	Lot Idn	Feet from the	North/South line	Feet from the	East/West line	County
E	20	22 S	37 E		1750	NORTH	845	WEST	LEA

## Bottom Hole Location If Different From Surface

UL or lot No.	Section	Township	Range	Lot Idn	Feet from the	North/South line	Feet from the	East/West line	County
E	20	22 S	37 E		2310	NORTH	990	WEST	LEA
Dedicated Acres <b>40</b>	Joint or Infill	Consolidation Code	Order No.						

NO ALLOWABLE WILL BE ASSIGNED TO THIS COMPLETION UNTIL ALL INTERESTS HAVE BEEN CONSOLIDATED  
OR A NON-STANDARD UNIT HAS BEEN APPROVED BY THE DIVISION

<p>N: 505466.4 E: 851975.3 NAD 27</p> <p><b>SURFACE LOCATION</b> Lat - N 32°22'47.28" Long - W 103°11'27.18" NMSPC- N 503786.624 E 894025.734 (NAD-83)</p> <p><b>PROPOSED BOTTOM HOLE LOCATION</b> Lat - N 32°22'41.75" Long - W 103°11'25.48" NMSPC- N 503228.5 E 894177.3 (NAD-83)</p> <p>Lat - N 32°22'41.30" Long - W 103°11'23.80" NMSPC- N 503168.7 E 852992.2 (NAD-27)</p> <p>N: 500178.4 E: 852037.1 NAD 27</p>	<p>N: 505529.2 E: 857242.0 NAD 27</p> <p><b>OPERATOR CERTIFICATION</b> I hereby certify that the information contained herein is true and complete to the best of my knowledge and belief, and that this organization either owns a working interest or unleased mineral interest in the land including the proposed bottom hole location or has a right to drill this well at this location pursuant to a contract with an owner of such a mineral or working interest, or to a voluntary pooling agreement or a compulsory pooling order heretofore entered by the division.</p> <p><i>Sorina L. Flores</i> 11/21/13 Signature Date <b>Sorina L. Flores</b> Printed Name <b>Sorina.Flores@apachecorp.com</b> Email Address</p> <p><b>SURVEYOR CERTIFICATION</b> I hereby certify that the well location shown on this plat was plotted from field notes of actual surveys made by me or under my supervision, and that the same is true and correct to the best of my belief.</p> <p>Date Surveyed Signature &amp; Seal of Professional Surveyor </p> <p>Certificate No. Gary L. Jones 7977</p> <p>BASIN SURVEYS 29150</p> <p>N: 500262.5 E: 857284.1 NAD 27</p>
---	--

HOBBSOCD

## DISTRICT I

1625 N. French Dr., Hobbs, NM 88240  
Phone (575) 393-6161 Fax: (575) 393-0720

## DISTRICT II

811 S. First St., Artesia, NM 88210  
Phone (575) 748-1283 Fax: (575) 748-0720

## DISTRICT III

1000 Rio Brazos Rd., Aztec, NM 87410  
Phone (505) 334-6178 Fax: (505) 334-6170

## DISTRICT IV

1220 S. St. Francis Dr., Santa Fe, NM 87505  
Phone (505) 478-3480 Fax: (505) 478-3482State of New Mexico  
Energy, Minerals and Natural Resources Department

## OIL CONSERVATION DIVISION

1220 South St. Francis Dr.  
Santa Fe, New Mexico 87505

JAN 14 2015

Form C-102

Revised August 1, 2011

Submit one copy to appropriate  
District Office

RECEIVED

## WELL LOCATION AND ACREAGE DEDICATION PLAT

☐ AMENDED REPORT

API Number <b>30-025-42764</b>	Pool Code <b>62700</b>	Pool Name <b>Wantz; ABD</b>
Property Code <b>40164</b>	Property Name <b>ELLIOTT EM 20 FEDERAL</b>	Well Number <b>2</b>
OGRID No. <b>873</b>	Operator Name <b>APACHE CORPORATION</b>	Elevation <b>3394'</b>

## Surface Location

UL or lot No.	Section	Township	Range	Lot Idn	Feet from the	North/South line	Feet from the	East/West line	County
E	20	22 S	37 E		1750	NORTH	845	WEST	LEA

## Bottom Hole Location If Different From Surface

UL or lot No.	Section	Township	Range	Lot Idn	Feet from the	North/South line	Feet from the	East/West line	County
E	20	22 S	37 E		2310	NORTH	990	WEST	LEA

Dedicated Acres	Joint or Infill	Consolidation Code	Order No.
<b>40</b>			

NO ALLOWABLE WILL BE ASSIGNED TO THIS COMPLETION UNTIL ALL INTERESTS HAVE BEEN CONSOLIDATED  
OR A NON-STANDARD UNIT HAS BEEN APPROVED BY THE DIVISION

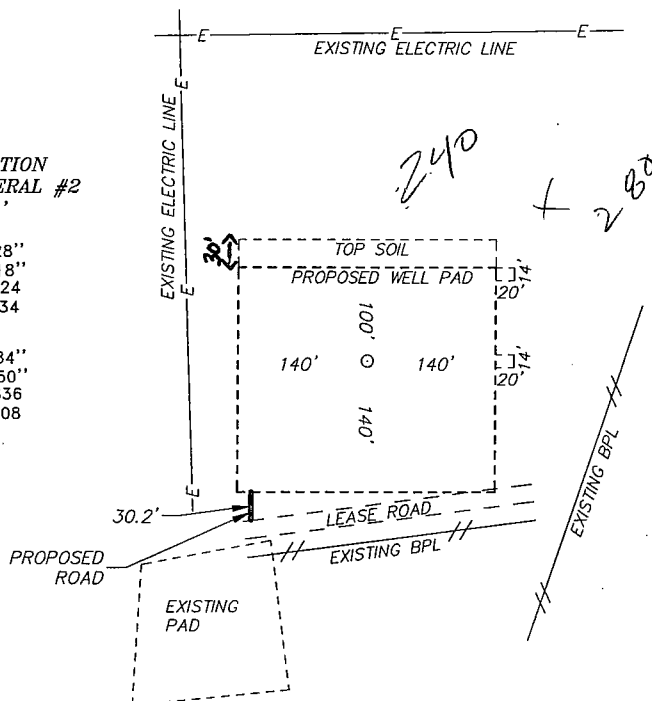
<p>N: 505486.4 E: 851975.3 NAD 27</p> <p><b>SURFACE LOCATION</b> Lat - N 32°22'47.28" Long - W 103°11'27.18" NMSPC- N 503786.624 E 894025.734 (NAD-83)</p> <p>Lat - N 32°22'46.84" Long - W 103°11'25.50" NMSPC- N 503726.836 E 852840.608 (NAD-27)</p> <p><b>PROPOSED BOTTOM HOLE LOCATION</b> Lat - N 32°22'41.75" Long - W 103°11'25.48" NMSPC- N 503228.5 E 894177.3 (NAD-83)</p> <p>Lat - N 32°22'41.30" Long - W 103°11'23.80" NMSPC- N 503168.7 E 852992.2 (NAD-27)</p> <p>N: 500178.4 E: 852037.1 NAD 27</p>	<p>N: 505529.2 E: 857242.0 NAD 27</p> <p><b>OPERATOR CERTIFICATION</b> I hereby certify that the information contained herein is true and complete to the best of my knowledge and belief, and that this organization either owns a working interest or unleased mineral interest in the land including the proposed bottom hole location or has a right to drill this well at this location pursuant to a contract with an owner of such a mineral or working interest, or to a voluntary pooling agreement or a compulsory pooling order heretofore entered by the division.</p> <p><i>Sorina L Flores</i> 11/21/13 Signature Date</p> <p><b>Sorina L. Flores</b> Printed Name</p> <p><i>sorina.flores@apachecorp.com</i> Email Address</p> <p><b>SURVEYOR CERTIFICATION</b> I hereby certify that the well location shown on this plat was plotted from field notes of actual surveys made by me or under my supervision, and that the same is true and correct to the best of my belief.</p> <p><i>GARY L. JONES</i> Date Surveyed Signature &amp; Seal of Professional Surveyor 7977</p> <p>Certificate No. Gary L. Jones 7977</p> <p>BASIN SURVEYS 29150</p>
--	--

SECTION 20, TOWNSHIP 22 SOUTH, RANGE 37 EAST, N.M.P.M.,  
LEA COUNTY, NEW MEXICO.

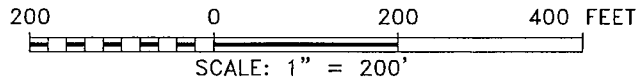
APACHE CORPORATION  
ELLIOTT EM 20 FEDERAL #2  
ELEV. - 3394'

Lat - N 32°22'47.28"  
Long - W 103°11'27.18"  
NMSPCE- N 503786.624  
E 894025.734  
(NAD-83)

Lat - N 32°22'46.84"  
Long - W 103°11'25.50"  
NMSPCE- N 503726.836  
E 852840.608  
(NAD-27)



EUNICE NM IS ±4 MILES NORTHEAST OF LOCATION.



Directions to Location:

FROM DELAWARE BASIN ROAD GO SOUTH 1.4 MILES  
THEN GO EAST 0.5 MILES TO EXISTING PAD.

**APACHE CORPORATION**

REF: ELLIOTT EM 20 FEDERAL #2 / WELL PAD TOPO

THE ELLIOTT EM 20 FEDERAL #2 LOCATED 1750'  
FROM THE NORTH LINE AND 845' FROM THE WEST LINE OF  
SECTION 20, TOWNSHIP 22 SOUTH, RANGE 37 EAST,  
N.M.P.M., LEA COUNTY, NEW MEXICO.

**BASIN SURVEYS** P.O. BOX 1786-HOBBS, NEW MEXICO

W.O. Number: 29150

Drawn By: J. GOAD

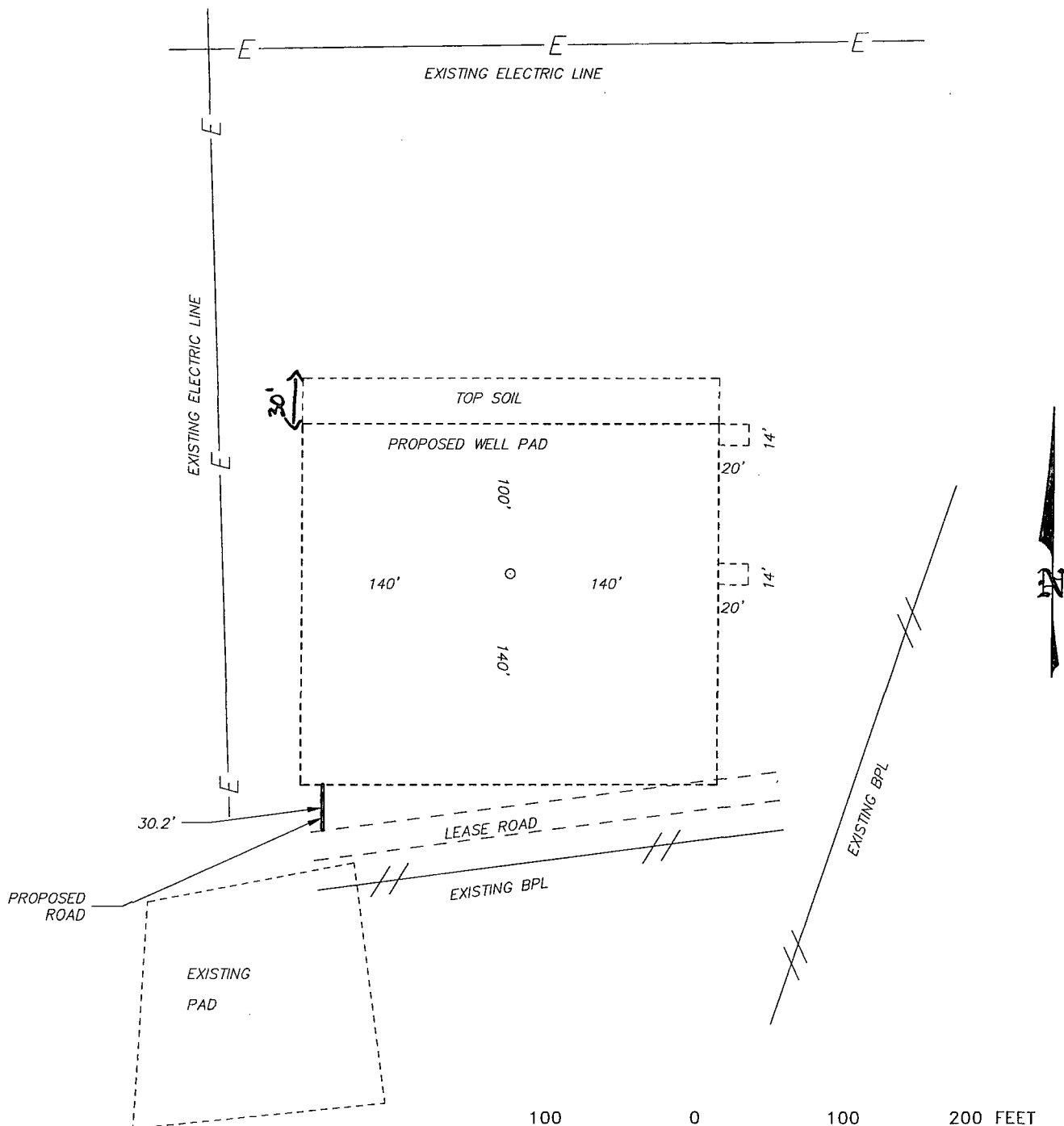
Date: 8-26-2013

Disk: JG 29150

Survey Date: 8-22-2013

Sheet 1 of 1 Sheets

SECTION 20, TOWNSHIP 22 SOUTH, RANGE 37 EAST, N.M.P.M.,  
LEA COUNTY, NEW MEXICO.



100 0 100 200 FEET  
SCALE: 1" = 100'

**APACHE CORPORATION**

REF: ELLIOTT EM 20 FEDERAL #2

THE ELLIOTT EM 20 FEDERAL #2 LOCATED 1750'  
FROM THE NORTH LINE AND 845' FROM THE WEST LINE OF  
SECTION 20, TOWNSHIP 22 SOUTH, RANGE 37 EAST,  
N.M.P.M., LEA COUNTY, NEW MEXICO.

**BASIN SURVEYS** P.O. BOX 1786 - HOBBS, NEW MEXICO

W.O. Number: 29150

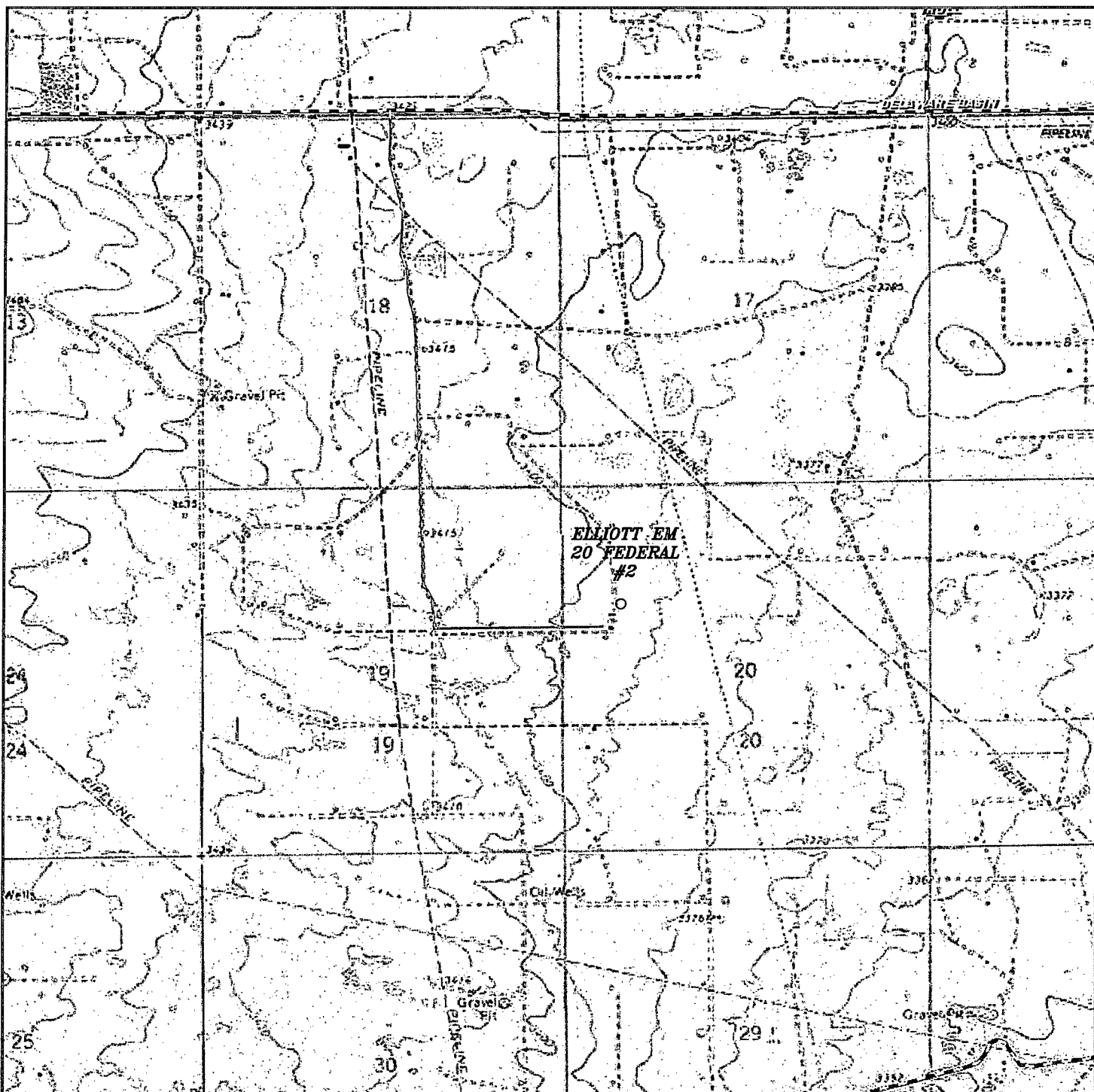
Drawn By: J. GOAD

Date: 8-26-2013

Disk: JG 29150

Survey Date: 8-22-2013

Sheet 1 of 1 Sheets



**ELLIOTT EM 20 FEDERAL #2**  
 Located 1750' FNL and 845' FWL  
 Section 20, Township 22 South, Range 37 East,  
 N.M.P.M., Lea County, New Mexico.



P.O. Box 1786  
 1120 N. West County Rd.  
 Hobbs, New Mexico 88241  
 (575) 393-7316 - Office  
 (575) 392-2206 - Fax  
 basinsurveys.com

W.O. Number: JG 29150

Survey Date: 8-22-2013

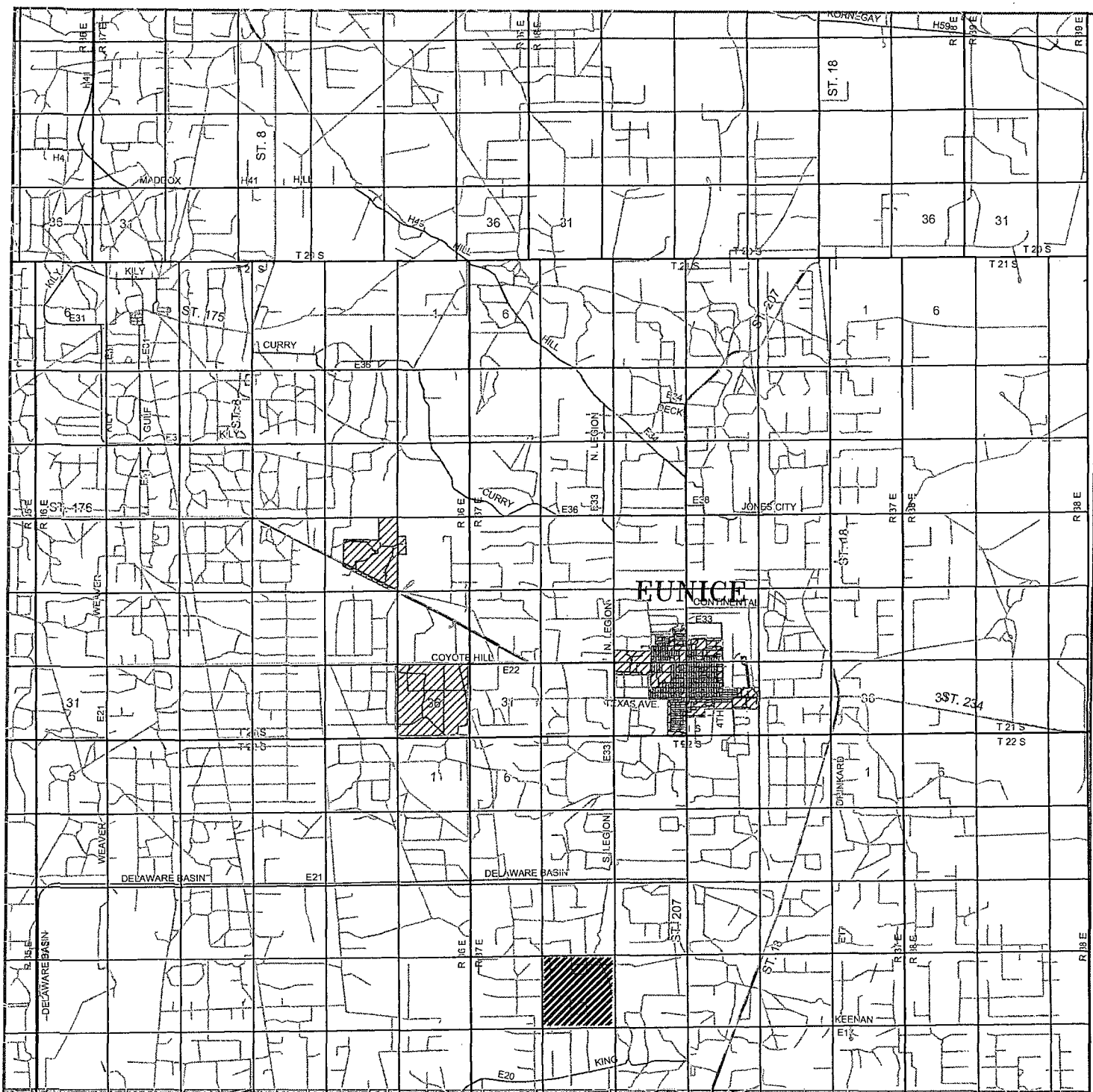
Scale: 1" = 2000'

Date: 8-26-2013



**APACHE  
 CORPORATION**





**ELLIOTT EM 20 FEDERAL #2**  
 Located 1750' FNL and 845' FWL  
 Section 20, Township 22 South, Range 37 East,  
 N.M.P.M., Lea County, New Mexico.



P.O. Box 1786  
 1120 N. West County Rd.  
 Hobbs, New Mexico 88241  
 (575) 393-7316 - Office  
 (575) 392-2206 - Fax  
 basinsurveys.com

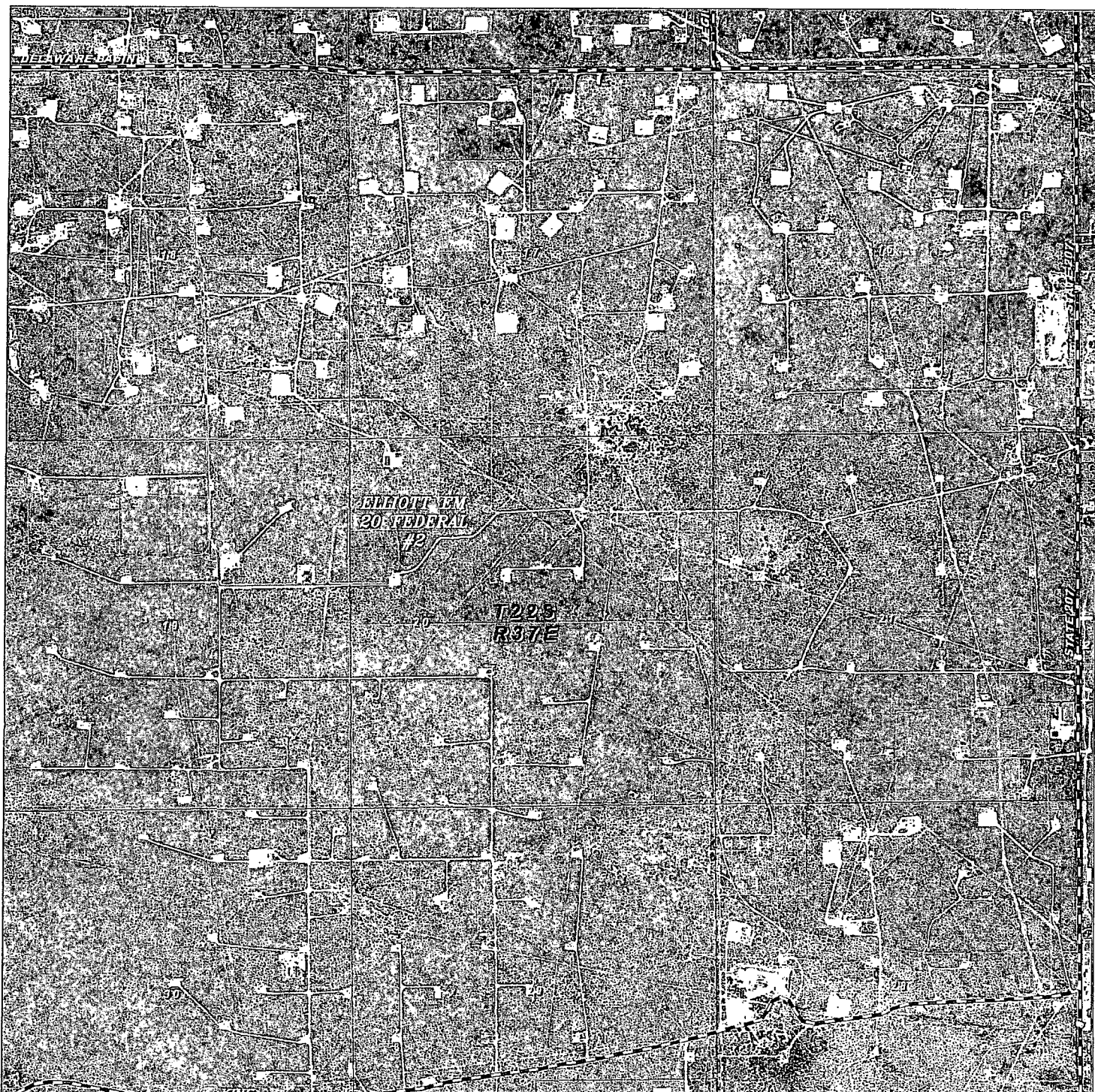
W.O. Number: JG 29150

Survey Date: 8-22-2013

Scale: 1" = 2 Miles

Date: 8-26-2013

**APACHE  
 CORPORATION**



**ELLIOTT EM 20 FEDERAL #2**  
 Located 1750' FNL and 845' FWL  
 Section 20, Township 22 South, Range 37 East,  
 N.M.P.M., Lea County, New Mexico.

**basin**  
**surveys**  
 focused on excellence  
 in the oilfield

P.O. Box 1786  
 1120 N. West County Rd.  
 Hobbs, New Mexico 88241  
 (575) 393-7316 - Office  
 (575) 392-2206 - Fax  
 basin-surveys.com

W.O. Number: JG 29150

Scale: 1" = 2000'

YELLOW TINT - USA LAND  
 BLUE TINT - STATE LAND  
 NATURAL COLOR - FEE LAND

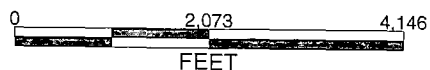
**APACHE**  
**CORPORATION**

# APACHE CORPORATION

ELLIOTT EM 20 FEDERAL #2

SHL: 1750' FNL + 845' FWL  
 BHL: 2310' FNL + 990' FWL  
 UL: E SEC: 20 T22S R37E

1 MILE RADIUS



POSTED WELL DATA

Well Number

- WELL SYMBOLS**
- ✦ Abandoned Oil Well
  - Dry Hole
  - ⊙ Gas Well
  - ⊙ Injection Well
  - Location Only
  - Non Apache
  - ⊙ Oil & Gas Well
  - Oil Well
  - △ Service Well
  - Drilling
  - Active Producer
  - ⊙ Active Injection

February 21, 2013

Exhibit # 2

