

UNITED STATES  
DEPARTMENT OF THE INTERIOR  
BUREAU OF LAND MANAGEMENTOCD Hobbs  
HOBBSOCD

JAN 22 2015

FORM APPROVED  
OMB NO. 1004-0135  
Expires: July 31, 2010**SUNDRY NOTICES AND REPORTS ON WELLS**  
*Do not use this form for proposals to drill or to re-enter an  
abandoned well. Use form 3160-3 (APD) for such proposals.*

RECEIVED

**SUBMIT IN TRIPLICATE - Other instructions on reverse side.**

5. Lease Serial No. NMNM06570
6. If Indian, Allottee or Tribe Name
7. If Unit or CA/Agreement, Name and/or No.
8. Well Name and No. MARATHON ROAD 15 PA FEDERAL 1H ✓
9. API Well No. 30-025-41575-00-S1 ✓
10. Field and Pool, or Exploratory LEA
11. County or Parish, and State LEA COUNTY, NM

1. Type of Well <input checked="" type="checkbox"/> Oil Well <input type="checkbox"/> Gas Well <input type="checkbox"/> Other	
2. Name of Operator MEWBOURNE OIL COMPANY ✓	
Contact: JACKIE LATHAN E-Mail: jlathan@mewbourne.com	
3a. Address HOBBBS, NM 88241	3b. Phone No. (include area code) Ph: 575-393-5905
4. Location of Well (Footage, Sec., T., R., M., or Survey Description) Sec 15 T20S R34E SESE 0300FSL 0330FEL 32.566589 N Lat, 103.540099 W Lon ✓	

**12. CHECK APPROPRIATE BOX(ES) TO INDICATE NATURE OF NOTICE, REPORT, OR OTHER DATA**

TYPE OF SUBMISSION	TYPE OF ACTION				
<input type="checkbox"/> Notice of Intent	<input type="checkbox"/> Acidize	<input type="checkbox"/> Deepen	<input type="checkbox"/> Production (Start/Resume)	<input type="checkbox"/> Water Shut-Off	
<input checked="" type="checkbox"/> Subsequent Report	<input type="checkbox"/> Alter Casing	<input type="checkbox"/> Fracture Treat	<input type="checkbox"/> Reclamation	<input type="checkbox"/> Well Integrity	
<input type="checkbox"/> Final Abandonment Notice	<input type="checkbox"/> Casing Repair	<input type="checkbox"/> New Construction	<input type="checkbox"/> Recomplete	<input checked="" type="checkbox"/> Other	
	<input type="checkbox"/> Change Plans	<input type="checkbox"/> Plug and Abandon	<input type="checkbox"/> Temporarily Abandon	Well Spud	
	<input type="checkbox"/> Convert to Injection	<input type="checkbox"/> Plug Back	<input type="checkbox"/> Water Disposal		

13. Describe Proposed or Completed Operation (clearly state all pertinent details, including estimated starting date of any proposed work and approximate duration thereof. If the proposal is to deepen directionally or recomple horizontally, give subsurface locations and measured and true vertical depths of all pertinent markers and zones. Attach the Bond under which the work will be performed or provide the Bond No. on file with BLM/BIA. Required subsequent reports shall be filed within 30 days following completion of the involved operations. If the operation results in a multiple completion or recomple in a new interval, a Form 3160-4 shall be filed once testing has been completed. Final Abandonment Notices shall be filed only after all requirements, including reclamation, have been completed, and the operator has determined that the site is ready for final inspection.)

01/11/14 Spud 17 1/2" hole. Ran 1670' of 13 3/8" 54.5 & 48# H40 & J55 ST&C csg. Cemented with 1150 sks Class C w/additives. Mixed @ 13.5 #/g w/1.75 yd. Tail w/200 sks Class C w/1% CaCl2. Mixed @ 14.8 #/g w/1.34 yd. Tested BOPE to 3000# & annular to 1500#. Plug down @ 9:30 AM 01/14/14. Circ 80 sks of cement to pit. WOC. At 9:00 A.M. 01/16/14 tested csg to 1250# for 30 minutes, held OK. Drilled out with 12 1/4" bit.

Chart &amp; Schematic attached.

Bond on file: NM1693 nationwide &amp; NMB000919

14. I hereby certify that the foregoing is true and correct.	
Electronic Submission #237873 verified by the BLM Well Information System For MEWBOURNE OIL COMPANY, sent to the Hobbs Committed to AFMSS for processing by BEVERLY WEATHERFORD on 05/02/2014 (14BMW0344SE)	
Name (Printed/Typed) JACKIE LATHAN	Title AUTHORIZED REPRESENTATIVE
Signature (Electronic Submission)	Date 03/05/2014

**THIS SPACE FOR FEDERAL OR STATE OFFICE USE**

Approved By <b>ACCEPTED</b>	JAMES A AMOS Title SUPERVISORY PET	Date 01/17/2015
Conditions of approval, if any, are attached. Approval of this notice does not warrant or certify that the applicant holds legal or equitable title to those rights in the subject lease which would entitle the applicant to conduct operations thereon.		Office Hobbs

Title 18 U.S.C. Section 1001 and Title 43 U.S.C. Section 1212, make it a crime for any person knowingly and willfully to make to any department or agency of the United States any false, fictitious or fraudulent statements or representations as to any matter within its jurisdiction.

**\*\* BLM REVISED \*\* BLM REVISED \*\* BLM REVISED \*\* BLM REVISED \*\* BLM REVISED \*\*****JAN 30 2015**

# MAN WELDING SERVICES, INC

Company Mawbourne Date 1-15-14

Lease WILKINSON ROAD "15" PA 5014 County Law Co. N.H.

Drilling Contractor Patterson #4441 Plug & Drill Pipe Size 12" C27 4 1/2 EF

Accumulator Pressure: 3000 Manifold Pressure: 1500 Annular Pressure: 1200

## Accumulator Function Test - OO&GO#2

### To Check - USABLE FLUID IN THE NITROGEN BOTTLES (III.A.2.c.i. or ii or iii)

- Make sure all rams and annular are open and if applicable HCR is closed.
- Ensure accumulator is pumped up to working pressure! (Shut off all pumps)
- 1. Open HCR Valve. (If applicable)
- 2. Close annular.
- 3. Close **all** pipe rams.
- 4. Open one set of the pipe rams to simulate closing the blind ram.
- 5. For 3 ram stacks, open the annular to achieve the 50+ % safety factor. (5M and greater systems).
- 6. Record remaining pressure 1300 psi. Test Fails if pressure is lower than required.
  - o a. {950 psi for a 1500 psi system} b. {1200 psi for a 2000 & 3000 psi system }
- 7. If annular is closed, open it at this time and close HCR.

### To Check - PRECHARGE ON BOTTLES OR SPHERICAL (III.A.2.d.)

- Start with manifold pressure at, or above, maximum acceptable pre-charge pressure:
  - a. {800 psi for a 1500 psi system} b. {1100 psi for 2000 and 3000 psi system}
- 1. Open bleed line to the tank, slowly. (gauge needle will drop at the lowest bottle pressure)
- 2. Close bleed line. Barely bump electric pump and see what pressure the needle jumps up to.
- 3. Record pressure drop 1000 psi. Test fails if pressure drops below minimum.
- Minimum: a. {700 psi for a 1500 psi system} b. {900 psi for a 2000 & 3000 psi system}

### To Check - THE CAPACITY OF THE ACCUMULATOR PUMPS (III.A.2.f.)

- Isolate the accumulator bottles or spherical from the pumps & manifold.
- Open the bleed off valve to the tank, {manifold psi should go to 0 psi} close bleed valve.
- 1. Open the HCR valve, {if applicable}
- 2. Close annular
- 3. With **pumps** only, time how long it takes to regain the required manifold pressure.
- 4. Record elapsed time 4.25 Test fails if it takes over 2 minutes.
  - a. {950 psi for a 1500 psi system} b. {1200 psi for a 2000 & 3000 psi system}



# MAN WELDING SERVICES

WELDING • BOP TESTING  
NIPPLE UP SERVICE • BOP LIFTS • TANDEM  
MUD AND GAS SEPARATORS  
Lovington, NM • 575-398-4540

Pg. 1 of 3

Company: McBourne Date: 1-15-14 Invoice # B60388

Lease: DIARATHON ROAD "15" PA FFD 14 Drilling Contractor: BAKER Rig # 9614

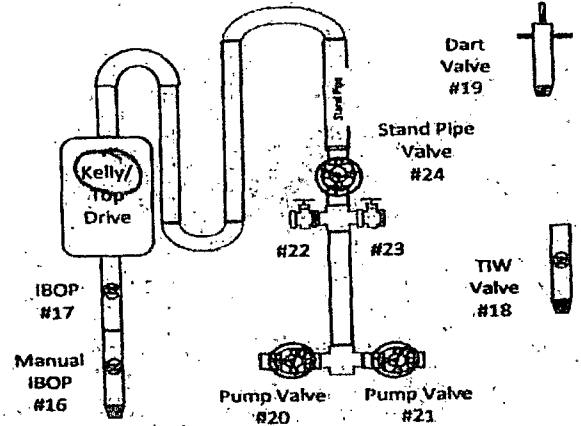
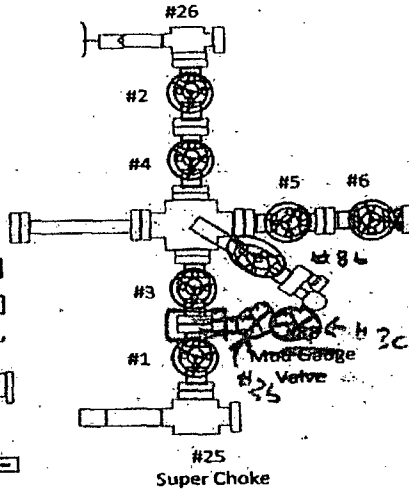
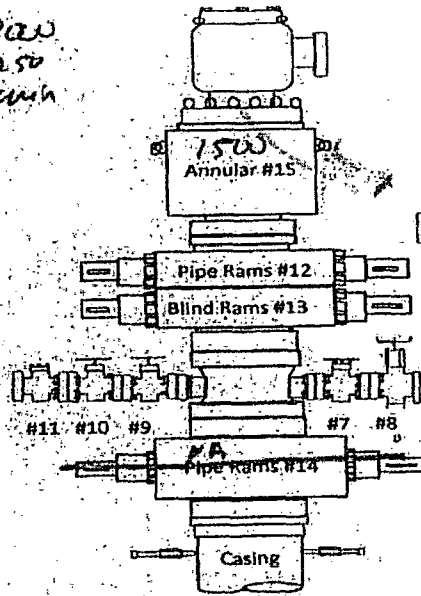
Plug Size & Type: 12" C22 Drill Pipe Size: 4 1/2 IF Tester: Matthew Davis

Required BOP: \_\_\_\_\_ Installed BOP: \_\_\_\_\_

\*Appropriate Casing Valve Must Be Open During BOP Test \*

\* Check Valve Must Be Open/Disabled To Test Kill Line Valves \*

H-300  
L-250  
10min



TEST #	ITEMS TESTED	TEST LENGTH	LOW PSI	HIGH PSI	REMARKS
1	19	10min	250	3000	Low Grad, Small bleed off on High, Pressure back up a few times to stabilize, High Grad Grad Test
2	16	10min	250	3000	Low Grad, Small bleed on High, Pressure back up until pressure stabilized, High Grad Grad Test
3	16	10min	250	3000	Small bleed off on Low, Pressure back up, bleed off again - bleed pressure up to work valves, No Test
4	16	10min	250	3000	Small bleed off on Low, Pressure back up, Low Grad, Pressure up to High, Small bleed off on High, Pressure back up until stabilized, Grad Test
5	15, 9, 7	10min	250	1500 3000	Low Grad, Small bleed off on High, Pressure back up to High, Grad Test
6	13, 9, 7	10min	250	3000	NO Pressure Gradual, No test
7	13, 9, 7				Pipe Ramer Functional Kill Pipe Tester
					Pressure up to Low, bleed off on Low



**MAN**  
WELDING SERVICES

WELDING • BOP TESTING  
NIPPLE UP SERVICE • BOP LIFTS • TANDEM  
MUD AND GAS SEPARATORS  
Lovington, NM • 575-398-4540

Pg. 2 of 3

TEST #	ITEMS TESTED	TEST LENGTH	LOW PSI	HIGH PSI	REMARKS
					Pressured back up. Bleed off again, Pressured up to 1000 psi to look for leaks, Leaks at both side of Blind Ram door
8	7, 5, 4, 3	10min	250	300	<del>Small</del> Pressured up small bleed off on Low, Pressured back up small bleed off again, bleed off to check Manual valves, Valve #8 was closed
9	7, 5, 4, 3	10min	250	300	Started to pressure up but not enough room in chamber to hold Test. Sealed CHIMATS, Low Good, Small bleed off on High, Pressured back up. Small bleed off again, then pressure dropped above 1200 psi, leak in Choke Manual Flange to Relief Valve.
10	12, 9, 7	10min	-	3000	Pressured up to High to check leak in Blind Ram door, Leak in Tank Spot, Leak not as far as before. Blind Ram door may be opened.
11	7, 5, 4, 3	10min	-	3000	Manual Choke Flange tightened. Pressured back up to High, Bleed off on High, checked Manual for leaks, no leaks found, Pressured back up, small bleed off, Pressured back up, Good Test
12	7, 6, 3b, 2, 1	10min	250	3000	Low Good, Small bleed off on High, Pressured up to High, minor leaks with bleed off still, Bleed off pressure to work Manual valves
13	7, 6, 3b, 2, 1	10min	-	3000	Pressured back up to High Good Test
14	7, 6, 3c, 2c, 25	Bump Test	-	3000	Pressured up, Bleed off, Good Test



Pg. 3 of 3

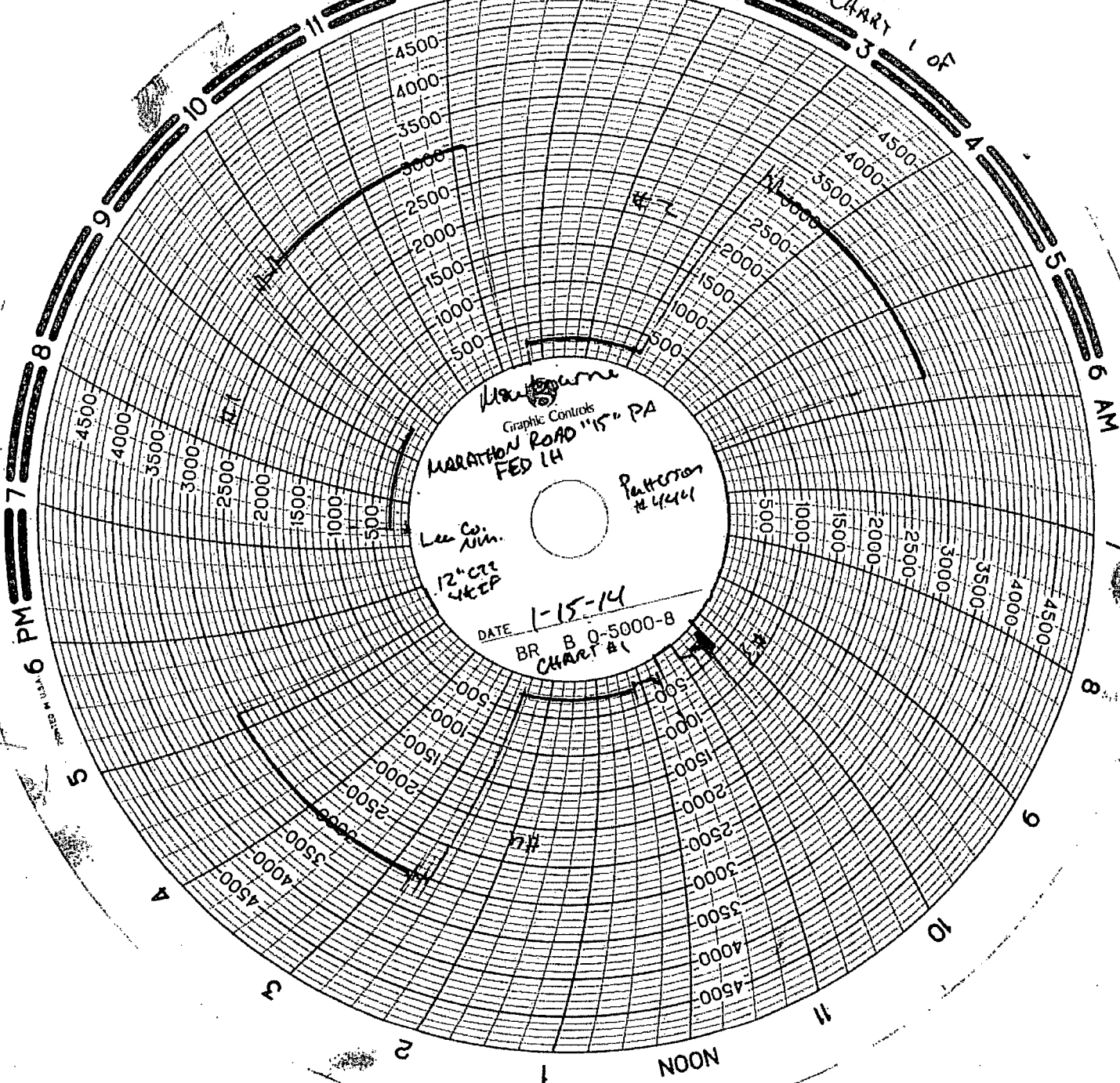
[illegible]

24 Hr. Clock

MIDNIGHT

12 noon

CHART 1 of 3

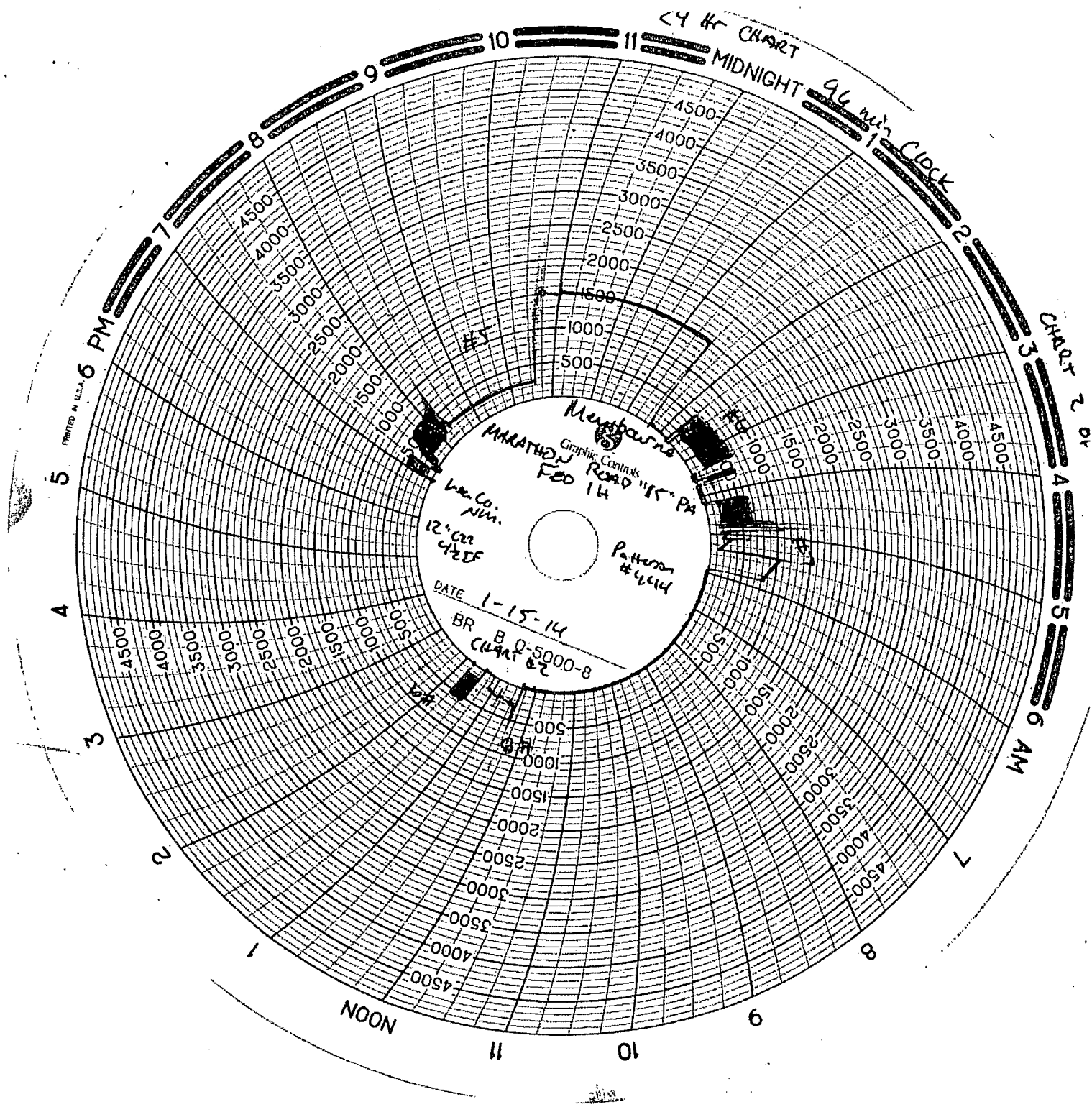


Graphic Controls  
MARATHON ROAD "15" PA  
FEB 14

Lee Co. Am.  
12" x 12" x 1/2"

Patterson  
#4444

DATE 1-15-14  
BR B 0-5000-B  
CHART #1



24 hr 96 min Clock

CHART 3 of 3

MIDNIGHT

NOON

6 PM

6 AM

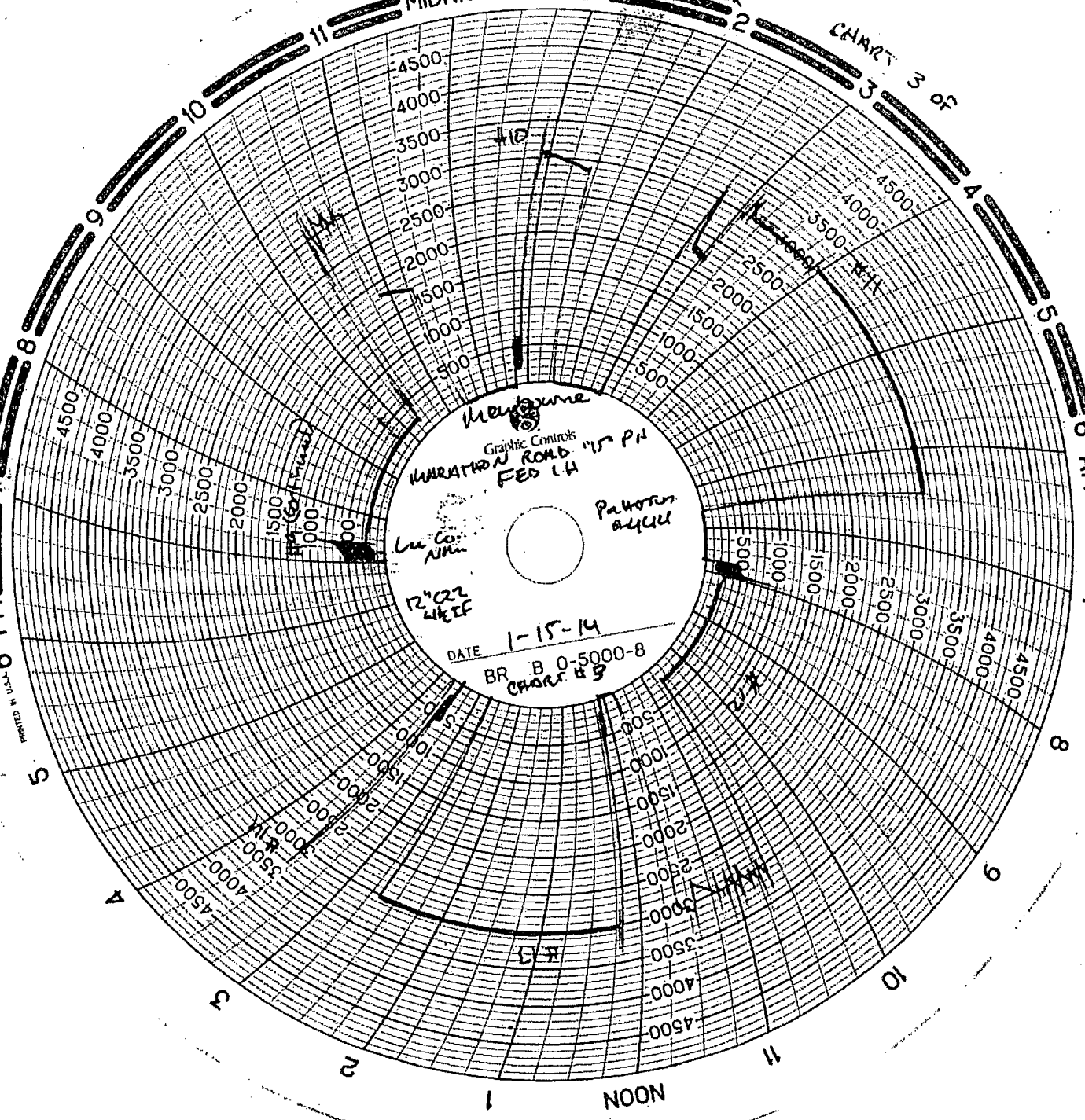
Graphic Controls  
KARATON ROAD  
FEB 14  
DATE 1-15-14  
BR B 0-5000-8  
CHART 49

Lee Co. NM

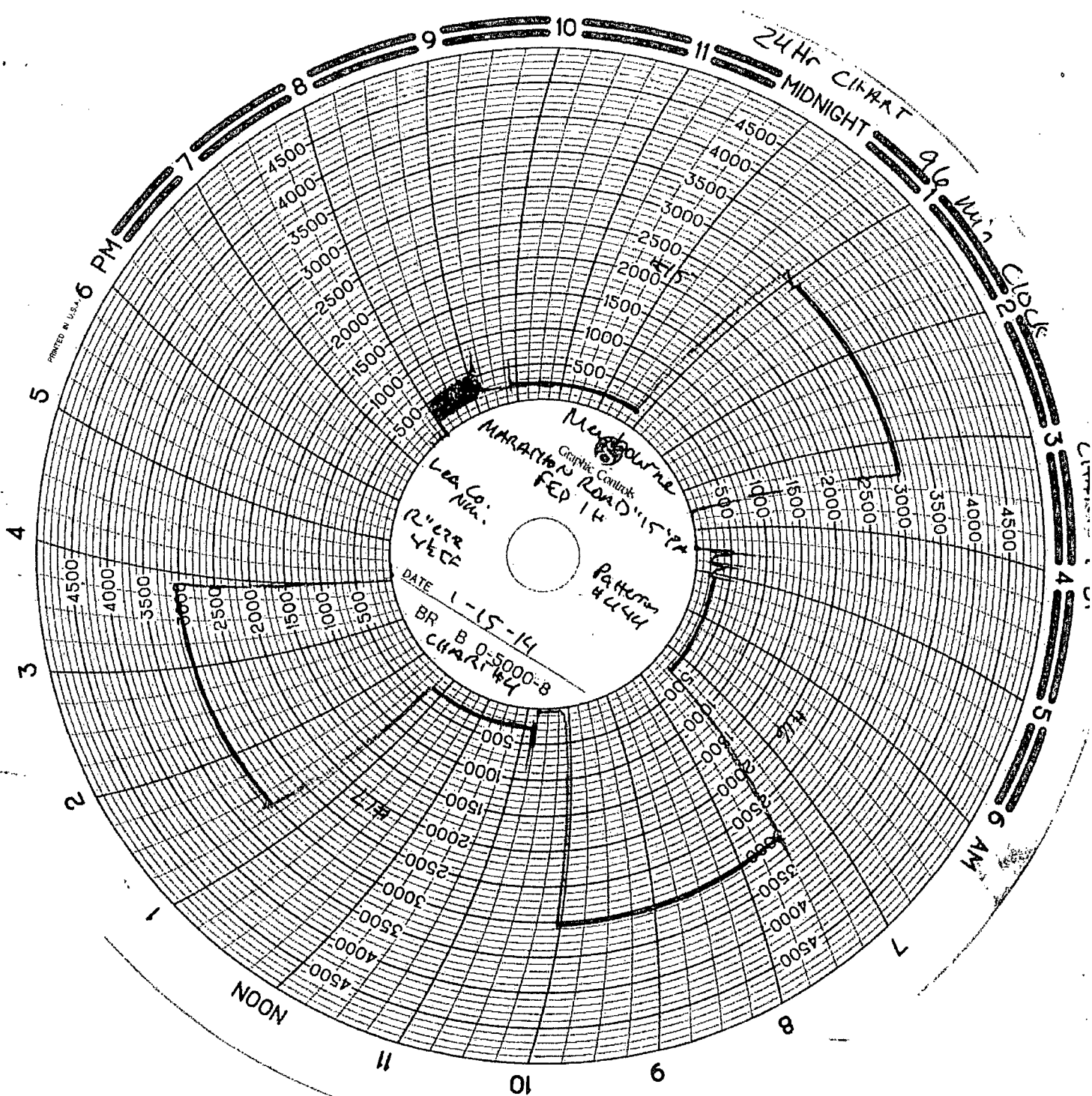
Pattern 4444

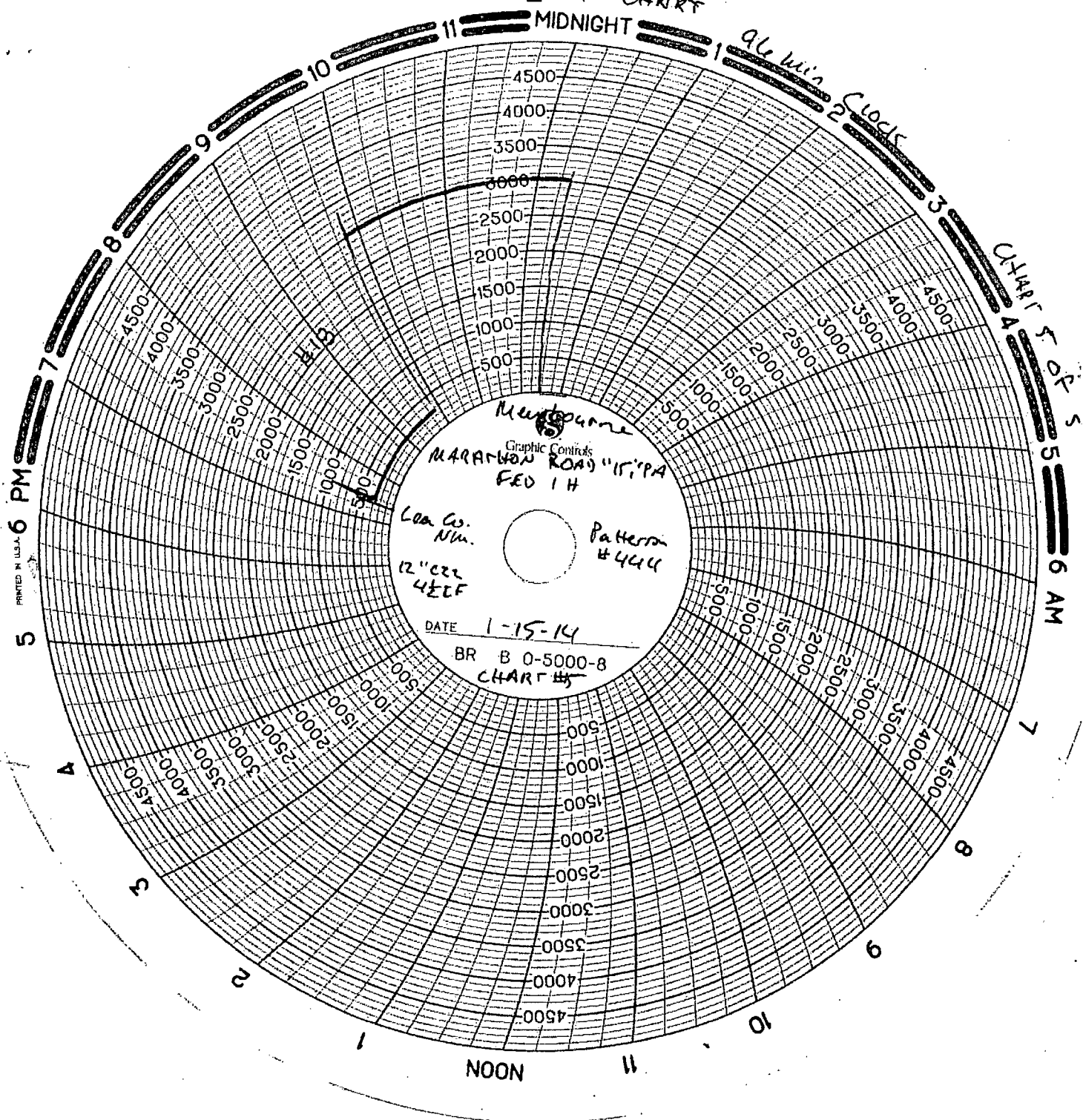
R-22 4444

PRINTED IN U.S.A.









11 MIDNIGHT

96 min Clock

CHART # 5 OF 5  
6 AM

Memphane  
Graphic Controls  
MARATHON ROAD 15 PA  
FED 1 H

Loa Co.  
N.H.  
12" x 22"  
4 1/2" x 1/2"

Pattern  
#444

DATE 1-15-14

BR B 0-5000-8  
CHART #5

5 6 PM

NOON

PRINTED IN U.S.A.