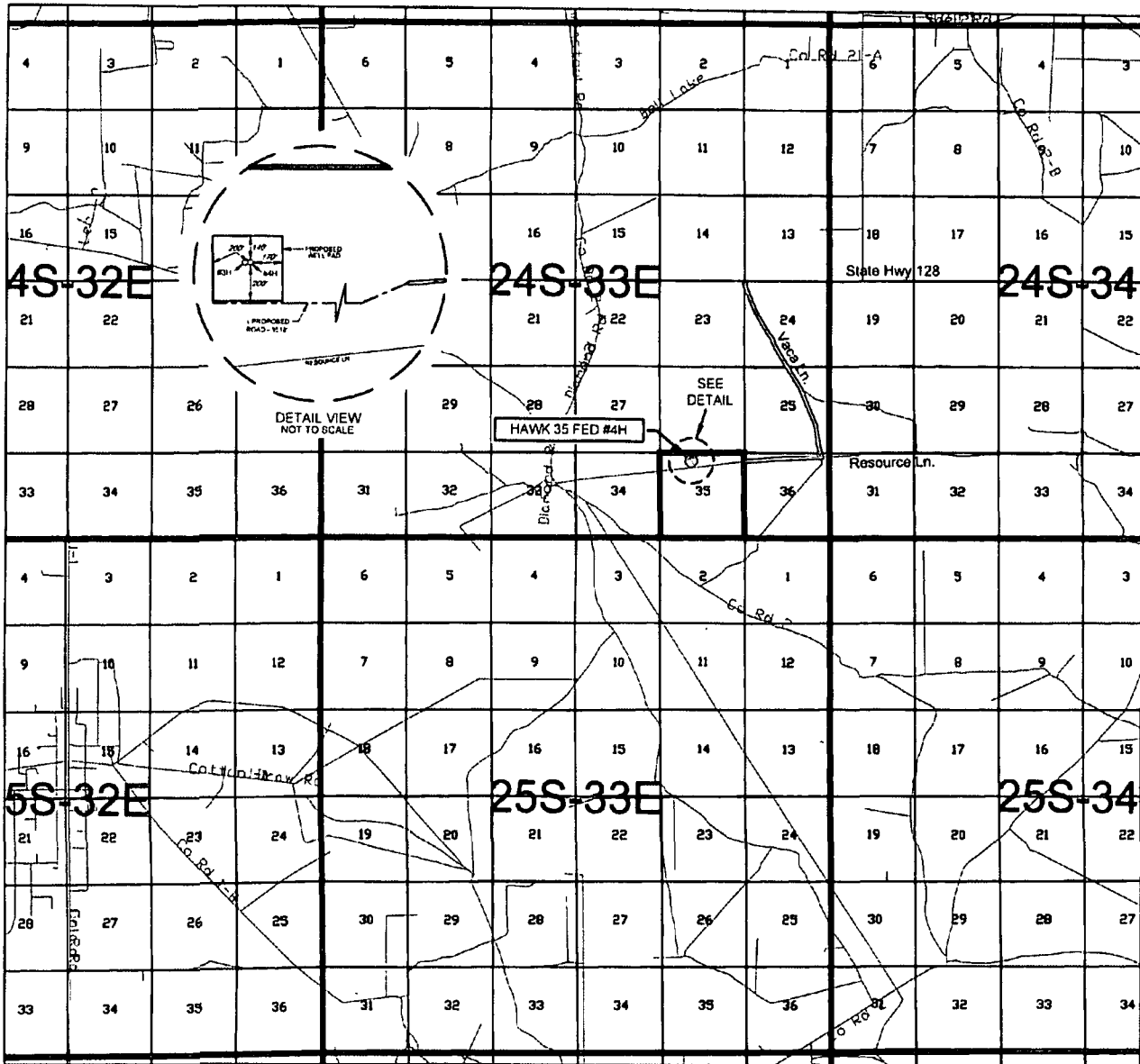


FEB 03 2015

# EXHIBIT 2 VICINITY MAP



**eog resources, inc.**

LEASE NAME & WELL NO.: HAWK 35 FED #4H

SECTION 35 TWP 24-S RGE 33-E SURVEY N.M.P.M.

COUNTY LEA STATE NM

DESCRIPTION 500' FNL & 1970' FWL

DISTANCE & DIRECTION FROM INT. OF NM-18 N & NM-128,  
GO WEST ON NM-128 W ±22.0 MILES, THENCE SOUTH (LEFT) ON  
VACA LN. ±2.3 MILES, THENCE WEST (RIGHT) ON RESOURCE LN. ±0.9  
MILES, THENCE SOUTHWEST (LEFT) ON PROPOSED RD. ±3518 FEET  
TO A POINT SOUTH OF THE LOCATION.

THIS PROPOSED LOCATION SHOWN HEREON HAS BEEN SURVEYED ON THE GROUND UNDER MY SUPERVISION AND PREPARED ACCORDING TO THE EVIDENCE FOUND AT THE TIME OF SURVEY, AND DATA PROVIDED BY EOG RESOURCES, INC. THIS CERTIFICATION IS MADE AND LIMITED TO THOSE PERSONS OR ENTITIES SHOWN ON THE FACE OF THIS PLAT AND IS NON-TRANSFERABLE. THIS SURVEY IS CERTIFIED FOR THIS TRANSACTION ONLY.

ALL BEARINGS, DISTANCES, AND COORDINATE VALUES CONTAINED HEREON ARE GRID BASED UPON THE NEW MEXICO STATE PLANE COORDINATE SYSTEM, EAST ZONE OF THE NORTH AMERICAN DATUM 1927, U.S. SURVEY FEET.



SCALE: 1" = 10000'  
 0' 5000' 10000'



**TOPOGRAPHIC**  
 LOYALTY INNOVATION LEGACY

1400 EVERMAN PARKWAY, Ste. 197 • FT. WORTH, TEXAS 76140  
 TELEPHONE: (817) 744-7512 • FAX (817) 744-7548  
 2903 NORTH BIG SPRING • MIDLAND, TEXAS 79705  
 TELEPHONE: (432) 882-1653 OR (800) 767-1653 • FAX (432) 882-1743  
 WWW.TOPOGRAPHIC.COM

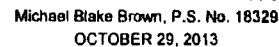


SECTION 35, TOWNSHIP 24 SOUTH, RANGE 33 EAST, N.M.P.M.  
LEA COUNTY, NEW MEXICO



ALL BEARINGS, DISTANCES, AND COORDINATE VALUES CONTAINED HEREON ARE GRID BASED UPON THE NEW MEXICO STATE PLANE COORDINATE SYSTEM, EAST ZONE OF THE NORTH AMERICAN DATUM 1927, U.S. SURVEY FEET

THIS PROPOSED LOCATION SHOWN HEREON HAS BEEN SURVEYED ON THE GROUND UNDER MY SUPERVISION TO PREPARE FOR RECORD AND THIS PROVENANCE AND THE NAME OF SURVEY, AND DATA PROVIDED BY EOG RESOURCES, INC. (THE CERTIFICATION IS MADE AND LIMITED TO THOSE PERSONS OR ENTITIES SHOWN ON THE FACE OF THIS PLAT AND IS NON-TRANSFERABLE. THIS SURVEY IS CERTIFIED FOR THIS TRANSACTION ONLY.



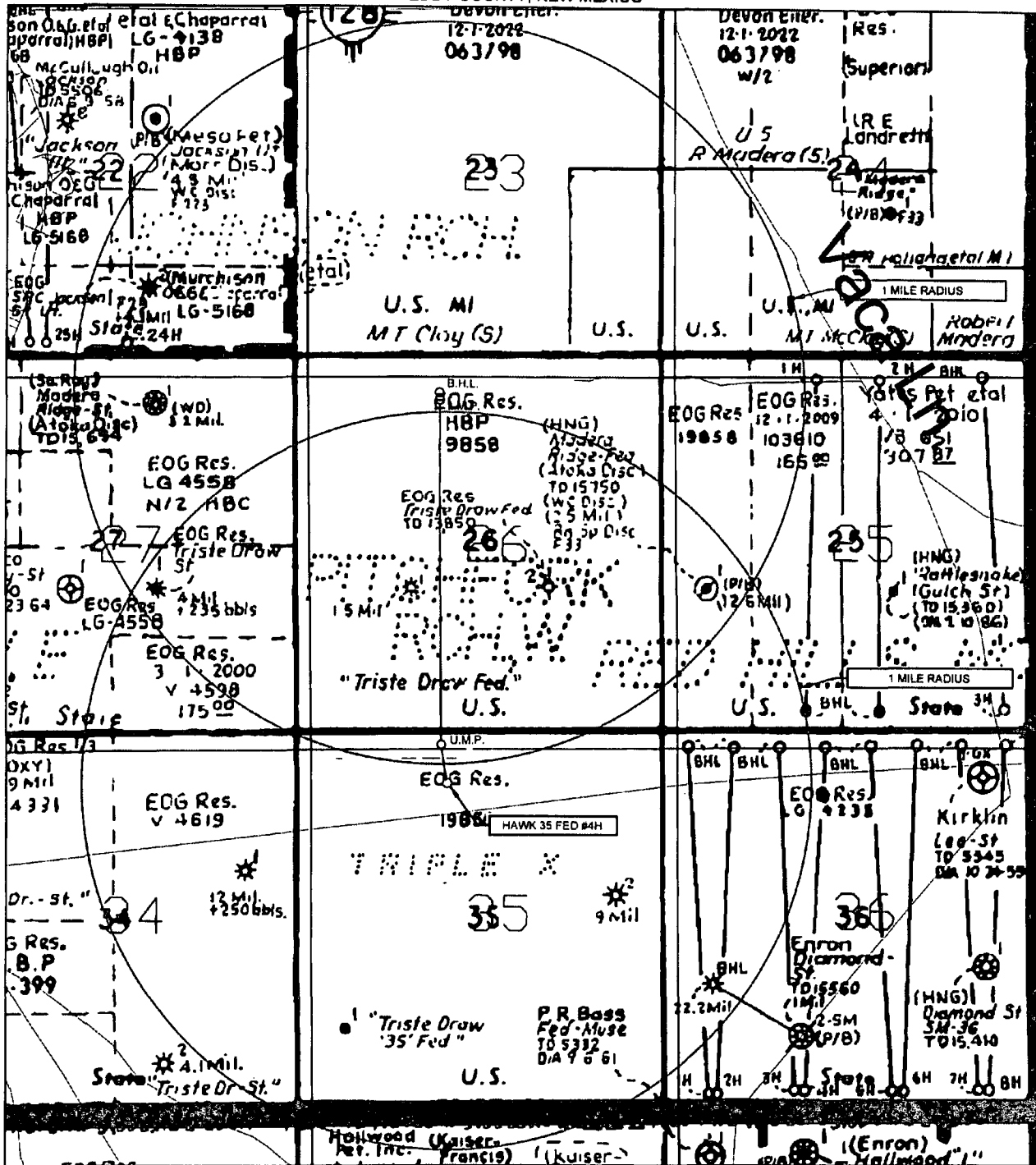
1400 EVERMAN PARKWAY, Ste. 107 • FT. WORTH, TEXAS 76140  
TELEPHONE: (817) 744-7512 • FAX (817) 744-7548  
2803 NORTH BIG SPRING • MIDLAND, TEXAS 79705  
TELEPHONE: (432) 682-1653 OR (800) 767-1653 • FAX (432) 682-1743  
WWW.TOPOGRAPHIC.COM

# EXHIBIT 3



**EOG resources, inc.**

SECTION 35, TOWNSHIP 24 SOUTH, RANGE 33 EAST, N.M.P.M.  
EDDY COUNTY, NEW MEXICO



SCALE: NTS

LEASE NAME & WELL NO.: HAWK 35 FED #4H

#1H LATITUDE

N 32.1798440

#1H LONGITUDE

W 103.5448222

## LEGEND

- EXISTING ROAD
- SECTION LINE
- EXISTING PIPELINE
- OVERHEAD ELECTRIC
- FENCE LINE



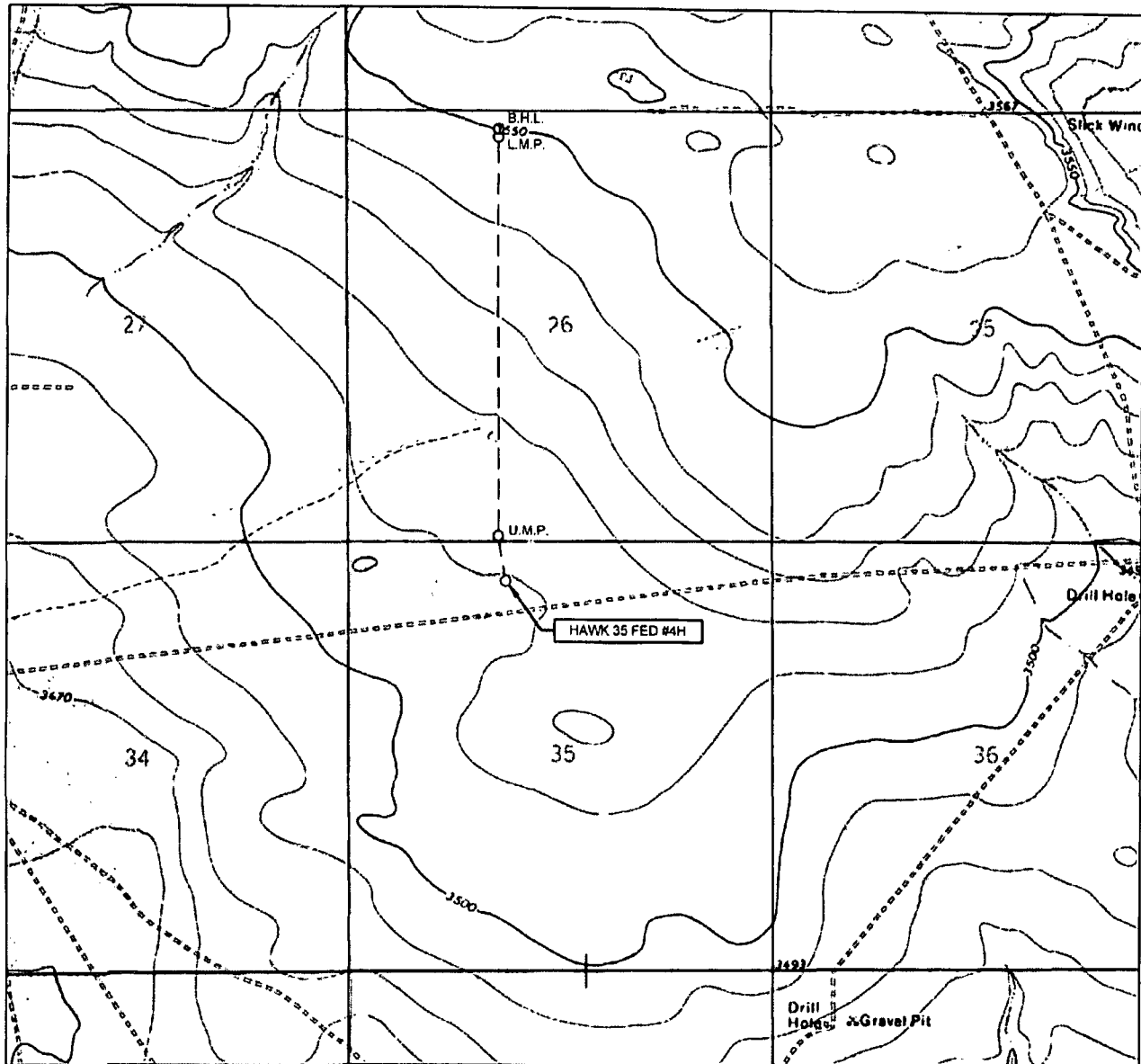
**TOPOGRAPHIC**  
LOYALTY INNOVATION LEGACY

1400 EVERMAN PARKWAY, Ste. 107 • FT. WORTH, TEXAS 76140  
TELEPHONE: (817) 744-7512 • FAX (817) 744-7548  
2903 NORTH BIG SPRING • MIDLAND, TEXAS 79708  
TELEPHONE: (432) 882-1853 OR (800) 787-1853 • FAX (432) 882-1743  
WWW.TOPOGRAPHIC.COM

ALL BEARINGS, DISTANCES, AND COORDINATE VALUES CONTAINED HEREON ARE GRID  
BASED UPON THE NEW MEXICO STATE PLANE COORDINATE SYSTEM, EAST ZONE OF THE  
NORTH AMERICAN DATUM 1927, U.S. SURVEY FEET

THIS EASEMENT/SERVITUDE LOCATION SHOWN HEREON HAS BEEN SURVEYED ON THE GROUND  
UNDER MY SUPERVISION AND PREPARED ACCORDING TO THE EVIDENCE FOUND AT THE TIME OF  
SURVEY, AND DATA PROVIDED BY EOG RESOURCES, INC. THIS CERTIFICATION IS MADE AND LIMITED  
TO THOSE PERSONS OR ENTITIES SHOWN ON THE FACE OF THIS PLAT AND IS NON-TRANSFERABLE.  
THIS SURVEY IS CERTIFIED FOR THIS TRANSACTION ONLY.

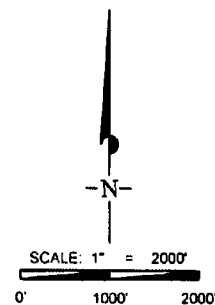
# LOCATION & ELEVATION VERIFICATION MAP



LEASE NAME & WELL NO.: HAWK 35 FED #4H

SECTION 35 TWP 24-S RGE 33-E SURVEY N.M.P.M.  
 COUNTY LEA STATE NM ELEVATION 3511'  
 DESCRIPTION 500' FNL & 1970' FWL

LATITUDE N 32.1798440 LONGITUDE W 103.5448222



THIS PROPOSED LOCATION SHOWN HEREON HAS BEEN SURVEYED ON THE GROUND UNDER MY SUPERVISION AND PREPARED ACCORDING TO THE EVIDENCE FOUND AT THE TIME OF SURVEY, AND DATA PROVIDED BY EOG RESOURCES, INC. THIS CERTIFICATION IS MADE AND LIMITED TO THOSE PERSONS OR ENTITIES SHOWN ON THE FACE OF THIS PLAT AND IS NON-TRANSFERABLE. THIS SURVEY IS CERTIFIED FOR THIS TRANSACTION ONLY.

ALL BEARINGS, DISTANCES, AND COORDINATE VALUES CONTAINED HEREON ARE GRID BASED UPON THE NEW MEXICO STATE PLANE COORDINATE SYSTEM, EAST ZONE OF THE NORTH AMERICAN DATUM 1927, U.S. SURVEY FEET.



**TOPOGRAPHIC**  
 LOYALTY INNOVATION LEGACY

1400 EVERMAN PARKWAY, Ste. 157 - FT. WORTH, TEXAS 76140  
 TELEPHONE: (817) 744-7512 - FAX: (817) 744-7548  
 2903 NORTH BIG SPRING - MIDLAND, TEXAS 79705  
 TELEPHONE: (432) 662-1653 OR (800) 707-1653 - FAX: (432) 662-1743  
 WWW.TOPOGRAPHIC.COM

