

District I
1625 N. French Dr., Hobbs, NM 88240
Phone: (575) 393-6161 Fax: (575) 393-0720
District II
811 S. First St., Artesia, NM 88210
Phone: (575) 748-1283 Fax: (575) 748-9720
District III
1000 Rio Brazos Road, Aztec, NM 87410
Phone: (505) 334-6178 Fax: (505) 334-6170
District IV
1220 S. St. Francis Dr., Santa Fe, NM 87505
Phone: (505) 476-3460 Fax: (505) 476-3462

State of New Mexico
Energy, Minerals & Natural Resources
Department
OIL CONSERVATION DIVISION
1220 South St. Francis Dr.
Santa Fe, NM 87505

FORM C-102
Revised August 1, 2011
Submit one copy to appropriate
District Office

☐ AMENDED REPORT

WELL LOCATION AND ACREAGE DEDICATION PLAT

¹ API Number 30-025-42402	² Pool Code 97900	³ Pool Name Red Hills; Upper Bone Spring Shale
⁴ Property Code 314177	⁵ Property Name HAWK 26 FED	⁶ Well Number #9H
⁷ GRID No. 7377	⁸ Operator Name EOG RESOURCES, INC.	⁹ Elevation 3538'

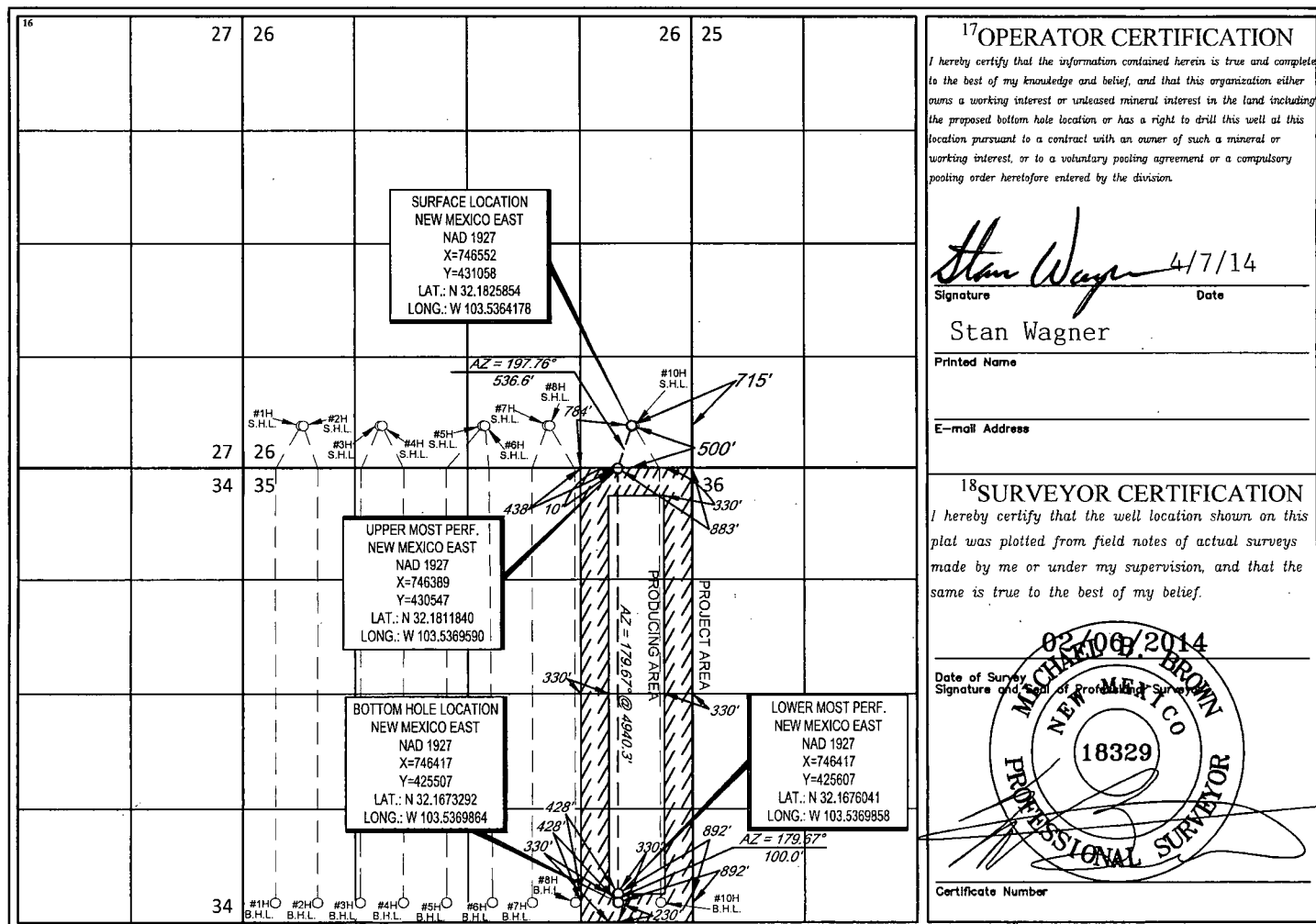
¹⁰Surface Location

UL or lot no.	Section	Township	Range	Lot Idn	Feet from the	North/South line	Feet from the	East/West line	County
P	26	24-S	33-E	-	500'	SOUTH	715'	EAST	LEA

UL or lot no.	Section	Township	Range	Lot Idn	Feet from the	North/South line	Feet from the	East/West line	County
P	35	24-S	33-E	-	230'	SOUTH	892'	EAST	LEA

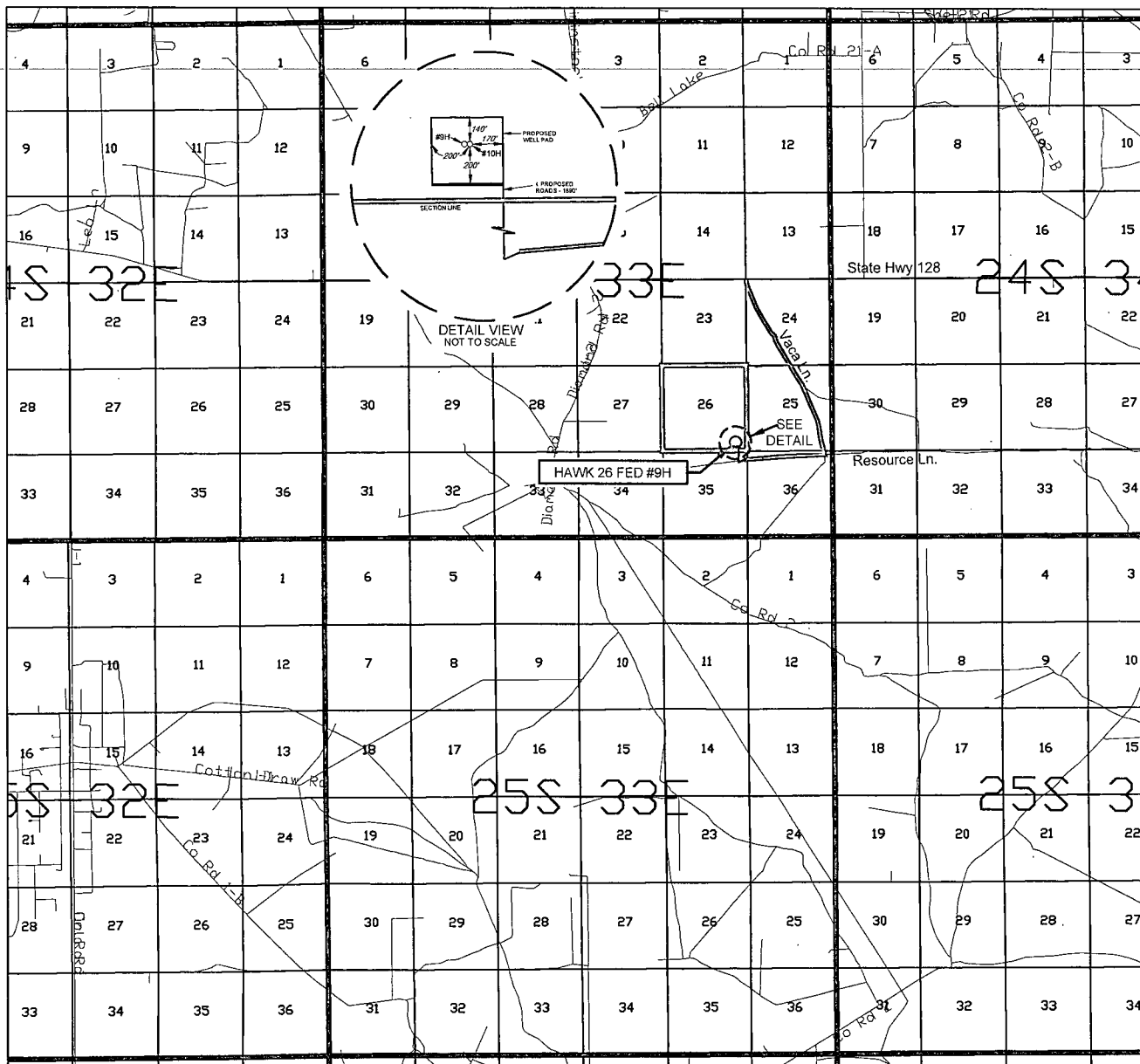
¹² Dedicated Acres 160	¹³ Joint or Infill	¹⁴ Consolidation Code	¹⁵ Order No.
--------------------------------------	-------------------------------	----------------------------------	-------------------------

No allowable will be assigned to this completion until all interests have been consolidated or a non-standard unit has been approved by the division.



FEB 03 1

EXHIBIT 2 VICINITY MAP



LEASE NAME & WELL NO.: HAWK 26 FED #9H

SECTION 26 TWP 24-S RGE 33-E SURVEY N.M.P.M.
COUNTY LEA STATE NM
DESCRIPTION 500' FSL & 715' FEL

DISTANCE & DIRECTION FROM INT. OF NM-18 N & NM-128, GO WEST
ON NM-128 W ±22.0 MILES, THENCE SOUTH ON VACA LN. ±2.3 MILES,
THENCE WEST ON RESOURCE LN. ±0.9 MILES, THENCE SOUTH ON
PROPOSED ROAD ±515 FEET, THENCE NORTH ON PROPOSED ROAD
±995 FEET, THENCE WEST ON PROPOSED ROAD ±380 FEET,
TO A POINT ±270 FEET SOUTH OF THE LOCATION.

THIS PROPOSED LOCATION SHOWN HEREON HAS BEEN SURVEYED ON THE GROUND UNDER MY SUPERVISION AND PREPARED ACCORDING TO THE EVIDENCE FOUND AT THE TIME OF SURVEY, AND DATA PROVIDED BY EOG RESOURCES, INC. THIS CERTIFICATION IS MADE AND LIMITED TO THOSE PERSONS OR ENTITIES SHOWN ON THE FACE OF THIS PLAT AND IS NON-TRANSFERABLE. THIS SURVEY IS CERTIFIED FOR THIS TRANSACTION ONLY.

ALL BEARINGS, DISTANCES, AND COORDINATE VALUES CONTAINED HEREON ARE GRID BASED UPON THE NEW MEXICO STATE PLANE COORDINATE SYSTEM, EAST ZONE OF THE NORTH AMERICAN DATUM 1927, U.S. SURVEY FEET.



SCALE: 1" = 10000'
0' 5000' 10000'



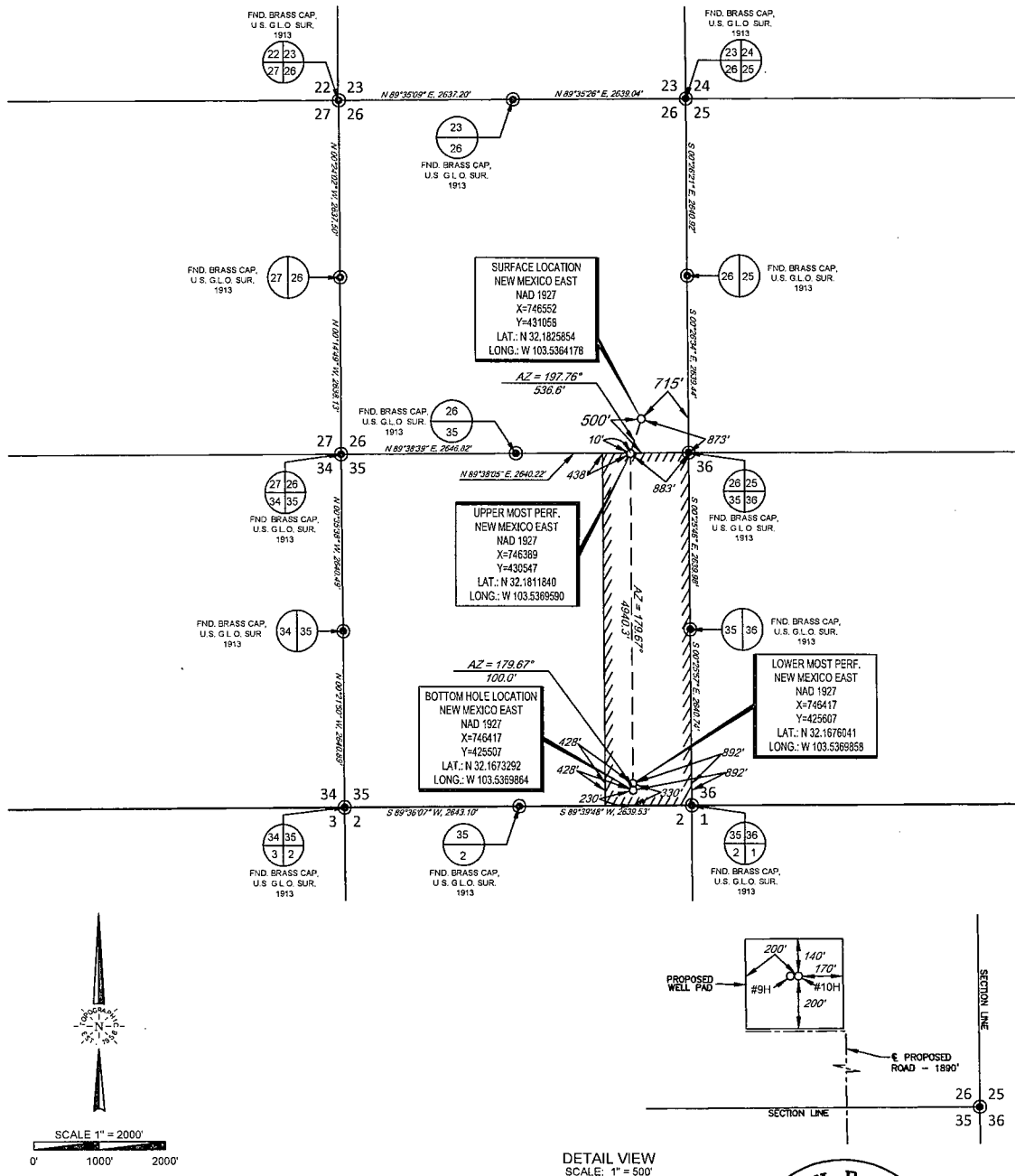
TOPOGRAPHIC
LOYALTY INNOVATION LEGACY

1400 EVERMAN PARKWAY, Ste. 197 • FT. WORTH, TEXAS 76140
TELEPHONE: (817) 744-7512 • FAX (817) 744-7548
2903 NORTH BIG SPRING • MIDLAND, TEXAS 79705
TELEPHONE: (432) 682-1653 OR (800) 767-1653 • FAX (432) 682-1743
WWW.TOPOGRAPHIC.COM



EXHIBIT 2A

SECTION 26, TOWNSHIP 24 SOUTH, RANGE 33 EAST, N.M.P.M.
LEA COUNTY, NEW MEXICO



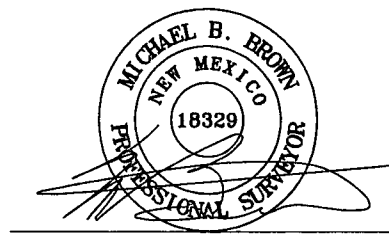
LEASE NAME & WELL NO.: HAWK 26 FED #9H

SECTION 26 TWP 24-S RGE 33-E SURVEY N.M.P.M.
COUNTY LEA STATE NM
DESCRIPTION 500' FSL & 715' FEL

DISTANCE & DIRECTION FROM INT. OF NM-18 N & NM-128,
GO WEST ON NM-128 W ±22.0 MILES, THENCE SOUTH ON VACA LN. ±2.3
MILES, THENCE WEST ON RESOURCE LN. ±0.9 MILES, THENCE SOUTH
ON PROPOSED ROAD ±515 FEET, THENCE NORTH ON PROPOSED
ROAD ±995 FEET, THENCE WEST ±380 FEET, TO A POINT ±270 FEET
SOUTH OF THE LOCATION.

ALL BEARINGS, DISTANCES, AND COORDINATE VALUES CONTAINED HEREON ARE GRID
BASED UPON THE NEW MEXICO STATE PLANE COORDINATE SYSTEM, EAST ZONE OF THE
NORTH AMERICAN DATUM 1927, U.S. SURVEY FEET

THIS PROPOSED LOCATION SHOWN HEREON HAS BEEN SURVEYED ON THE GROUND UNDER MY
SUPERVISION AND PREPARED ACCORDING TO THE EVIDENCE FOUND AT THE TIME OF SURVEY, AND
DATA PROVIDED BY EOG RESOURCES, INC. THIS CERTIFICATION IS MADE AND LIMITED TO THOSE
PERSONS OR ENTITIES SHOWN ON THE FACE OF THIS PLAT AND IS NON-TRANSFERABLE. THIS
SURVEY IS CERTIFIED FOR THIS TRANSACTION ONLY.



Michael Blake Brown, P.S. No. 18329
FEBRUARY 06, 2014



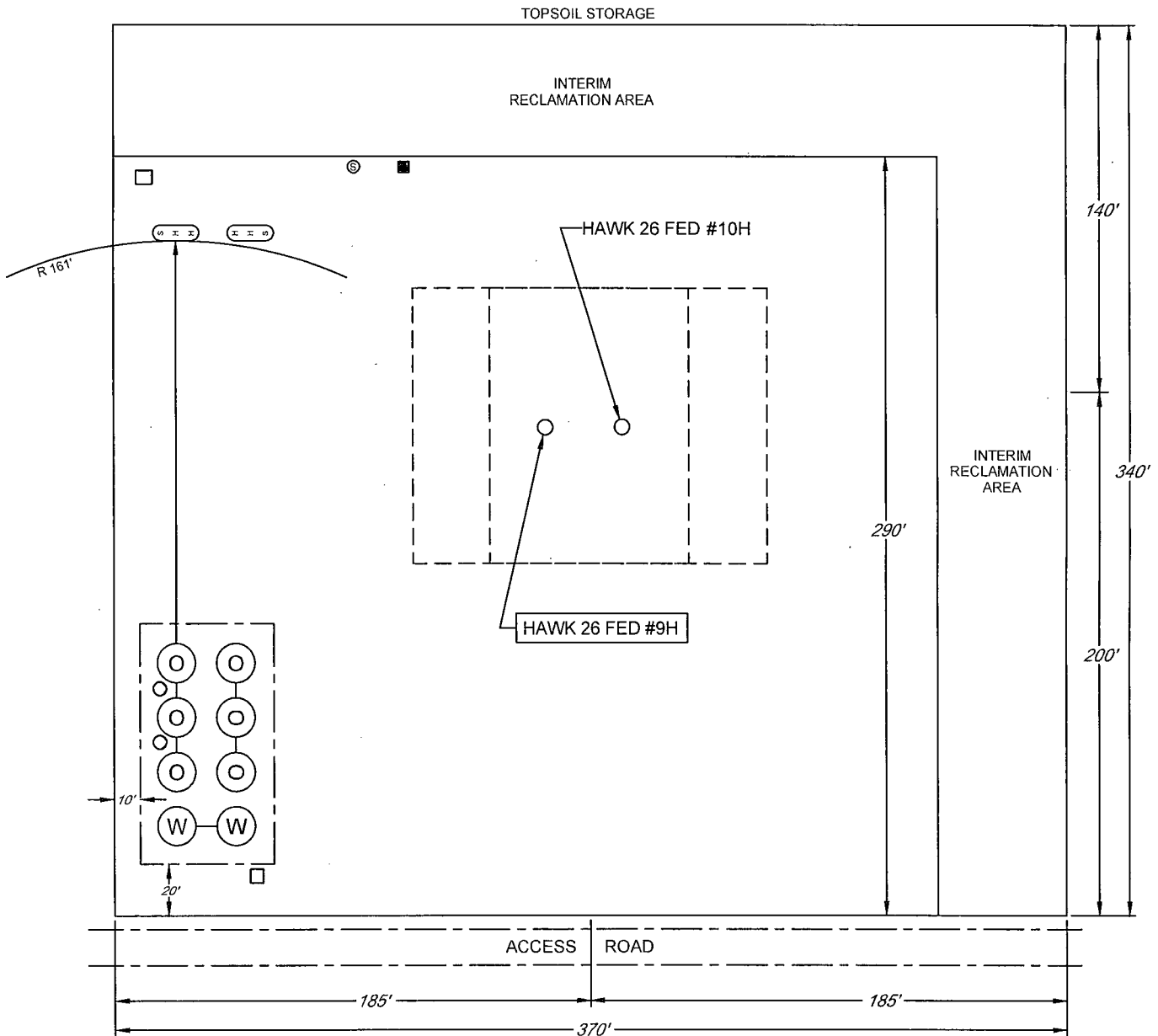
1400 EVERMAN PARKWAY, Ste. 197 • FT. WORTH, TEXAS 76140
TELEPHONE: (817) 744-7512 • FAX (817) 744-7548
2903 NORTH BIG SPRING • MIDLAND, TEXAS 79705
TELEPHONE: (432) 682-1653 OR (800) 767-1653 • FAX (432) 682-1743
WWW.TOPOGRAPHIC.COM

EXHIBIT 2C

RECLAMATION AND FACILITY DIAGRAM - PRODUCTION FACILITIES DIAGRAM

SECTION 26, TOWNSHIP 24 SOUTH, RANGE 33 EAST, N.M.P.M.
LEA COUNTY, NEW MEXICO

DETAIL VIEW
SCALE: 1" = 60'



LEASE NAME & WELL NO.: HAWK 26 FED #9H
#9H LATITUDE N 32.1825854 #9H LONGITUDE W 103.5364178

LEGEND

	500 BBL OIL TANK		FLARE SEPARATOR
	500 BBL WATER TANK		VRU
	36 x 15 HEATER/SEPARATOR		48 X 25 VRT
			FP FLARE
			OP FLARE

SECTION 26, TOWNSHIP 24 SOUTH, RANGE 33 EAST, N.M.P.M.
LEA COUNTY, NEW MEXICO



SCALE: NTS

#9H LATITUDE N 32.1825854

#9H LONGITUDE W 103.5364178

LEGEND

-

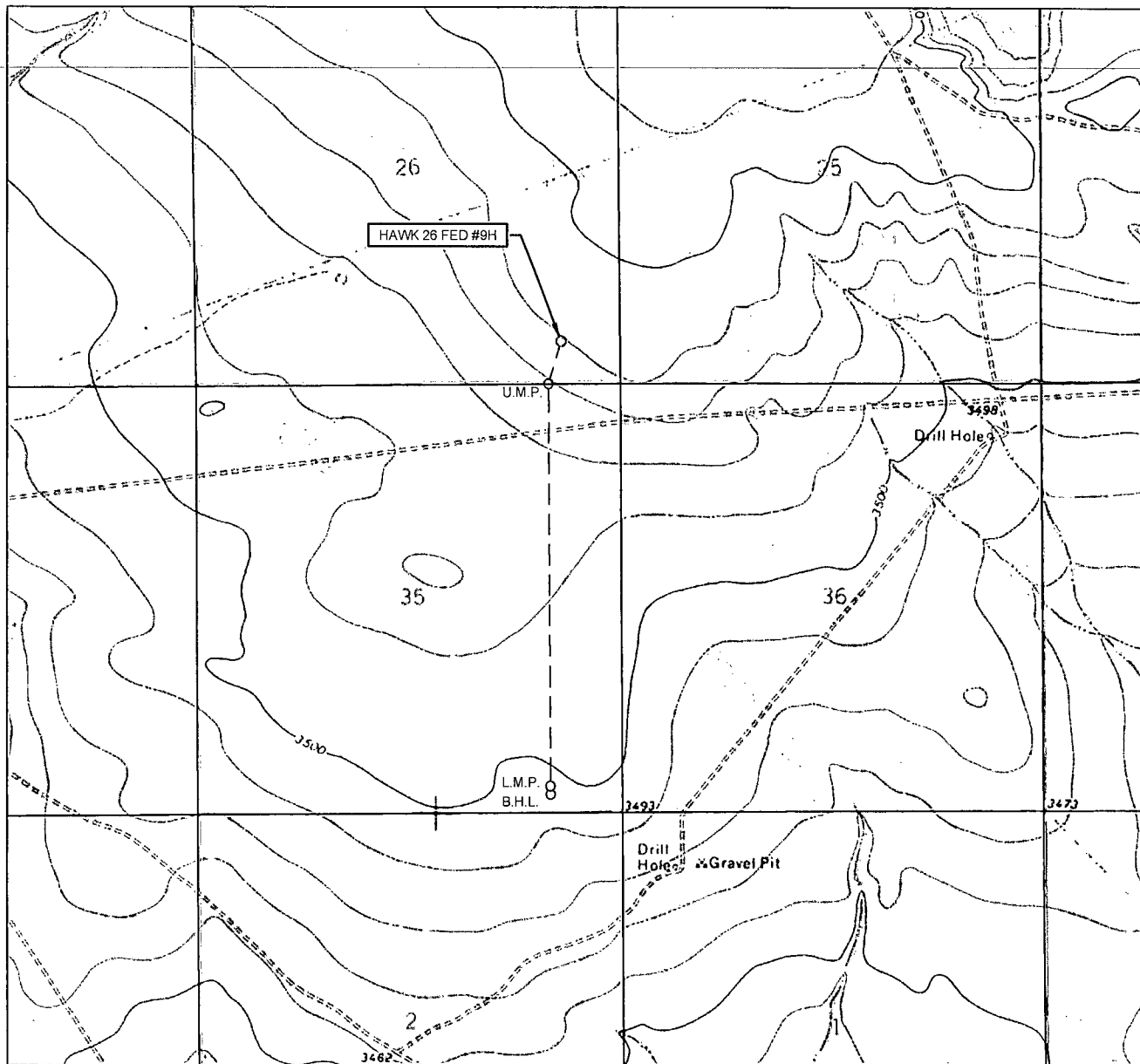
TOPOGRAPHIC
LOYALTY INNOVATION LEGACY

1400 EVERMAN PARKWAY, Ste. 197 • FT. WORTH, TEXAS 76140
TELEPHONE: (817) 744-7512 • FAX (817) 744-7548
2903 NORTH BIG SPRING • MIDLAND, TEXAS 79705
TELEPHONE: (432) 682-1653 OR (800) 767-1653 • FAX (432) 682-1743
WWW.TOPOGRAPHIC.COM

ALL BEARINGS, DISTANCES, AND COORDINATE VALUES CONTAINED HEREON ARE GRID
BASED UPON THE NEW MEXICO STATE PLANE COORDINATE SYSTEM, EAST ZONE OF THE
NORTH AMERICAN DATUM 1927, U.S. SURVEY FEET

THIS EASEMENT/SERVITUDE LOCATION SHOWN HEREON HAS BEEN SURVEYED ON THE GROUND UNDER MY SUPERVISION AND PREPARED ACCORDING TO THE EVIDENCE FOUND AT THE TIME OF SURVEY, AND DATA PROVIDED BY EOG RESOURCES, INC. THIS CERTIFICATION IS MADE AND LIMITED TO THOSE PERSONS OR ENTITIES SHOWN ON THE FACE OF THIS PLAT AND IS NON-TRANSFERABLE. THIS SURVEY IS CERTIFIED FOR THIS TRANSACTION ONLY.

LOCATION & ELEVATION VERIFICATION MAP



LEASE NAME & WELL NO.: HAWK 26 FED #9H

SECTION 26 TWP 24-S RGE 33-E SURVEY N.M.P.M.
 COUNTY LEA STATE NM ELEVATION 3538'
 DESCRIPTION 500' FSL & 715' FEL

LATITUDE N 32.1825854 LONGITUDE W 103.5364178



SCALE: 1" = 2000'
 0' 1000' 2000'



TOPOGRAPHIC
 LOYALTY INNOVATION LEGACY

1400 EVERMAN PARKWAY, Ste. 197 • FT. WORTH, TEXAS 76140
 TELEPHONE: (817) 744-7512 • FAX (817) 744-7548
 2903 NORTH BIG SPRING • MIDLAND, TEXAS 79705
 TELEPHONE: (432) 682-1653 OR (800) 767-1653 • FAX (432) 682-1743
 WWW.TOPOGRAPHIC.COM

THIS PROPOSED LOCATION SHOWN HEREON HAS BEEN SURVEYED ON THE GROUND UNDER MY SUPERVISION AND PREPARED ACCORDING TO THE EVIDENCE FOUND AT THE TIME OF SURVEY, AND DATA PROVIDED BY EOG RESOURCES, INC. THIS CERTIFICATION IS MADE AND LIMITED TO THOSE PERSONS OR ENTITIES SHOWN ON THE FACE OF THIS PLAT AND IS NON-TRANSFERABLE. THIS SURVEY IS CERTIFIED FOR THIS TRANSACTION ONLY.

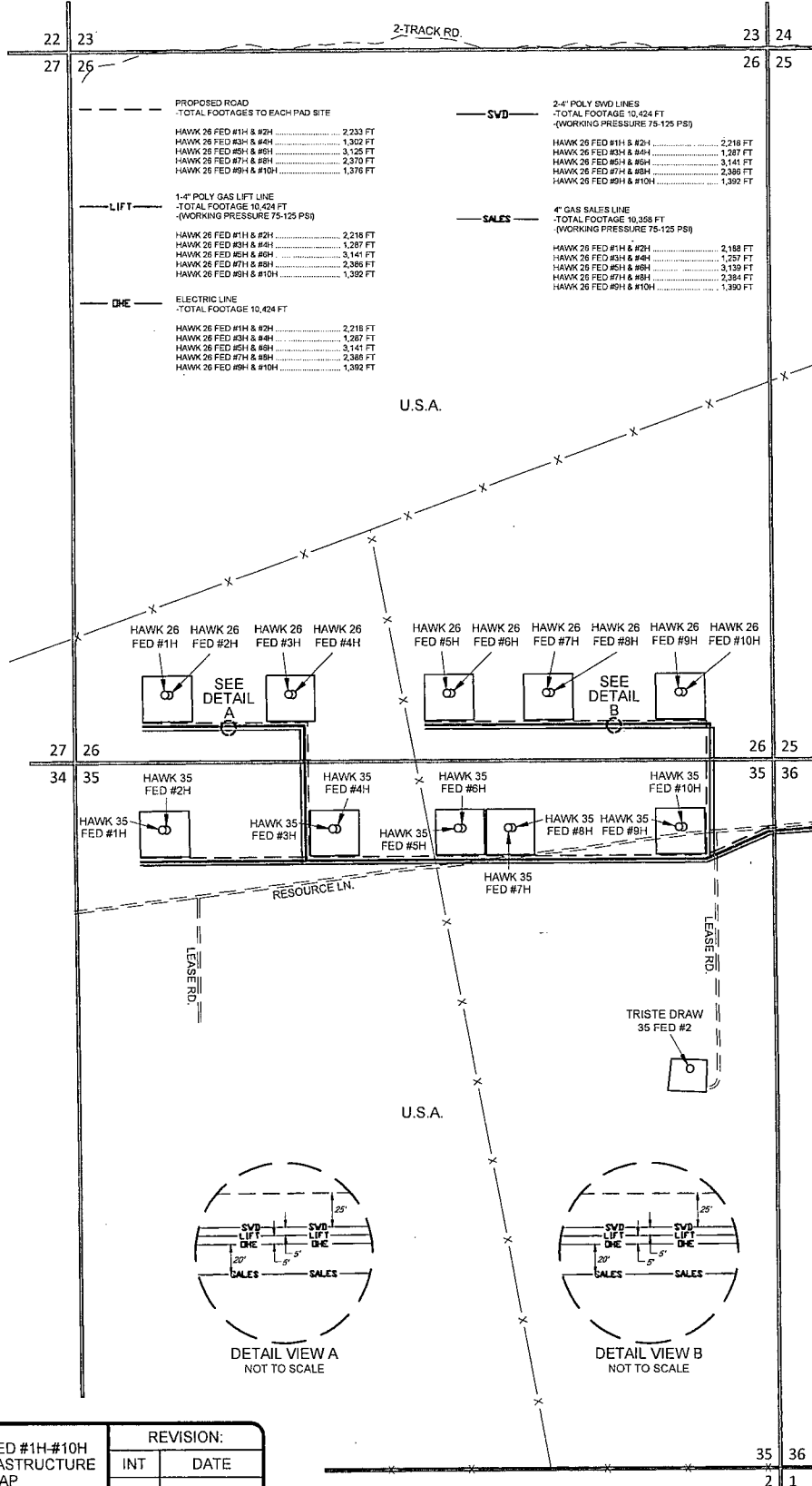
ALL BEARINGS, DISTANCES, AND COORDINATE VALUES CONTAINED HEREON ARE GRID BASED UPON THE NEW MEXICO STATE PLANE COORDINATE SYSTEM, EAST ZONE OF THE NORTH AMERICAN DATUM 1927, U.S. SURVEY FEET.

SCALE 1" = 1000'
0' 1000' 2000'

EXHIBIT 5

SECTION 26 & 35, TOWNSHIP 24 SOUTH, RANGE 33 EAST, N.M.P.M.
LEA COUNTY, NEW MEXICO

HAWK 26 FED #1H-#10H LEASE INFRASTRUCTURE MAP



HAWK 26 FED #1H-#10H
LEASE INFRASTRUCTURE
MAP

REVISION:

INT	DATE

DATE: 03/13/14

FILE: SK_HAWK26FED_1H-10H_INFRASTRUCTURE_MAP

DRAWN BY: A.C.C.

SHEET: 1 OF 1

