

District I
1625 N. French Dr., Hobbs, NM 88240
Phone: (575) 393-6161 Fax: (575) 393-0720
District II
811 S. First St., Artesia, NM 88210
Phone: (575) 748-1283 Fax: (575) 748-9720
District III
1000 Rio Brazos Road, Aztec, NM 87410
Phone: (505) 334-6178 Fax: (505) 334-6170
District IV
1220 S. St. Francis Dr., Santa Fe, NM 87503
Phone: (505) 476-3460 Fax: (505) 476-3462

State of New Mexico
Energy, Minerals & Natural Resources Department
OIL CONSERVATION DIVISION
1220 South St. Francis Dr.
Santa Fe, NM 87505

Form C-102
Revised August 1, 2011
Submit one copy to appropriate
District Office

☐ AMENDED REPORT

WELL LOCATION AND ACREAGE DEDICATION PLAT

¹ API Number 30-025-42415	² Pool Code 96672	³ Pool Name WC-025 G-08 S263412K; BS
⁴ Property Code 40149	⁵ Property Name MEAN GREEN 27 FED	
⁷ OGRID No. 6137	⁸ Operator Name DEVON ENERGY PRODUCTION COMPANY, L.P.	
		⁶ Well Number 2H
		⁹ Elevation 3219.2

¹⁰ Surface Location

UL or lot no.	Section	Township	Range	Lot Idn	Feet from the	North/South line	Feet from the	East/West line	County
P	22	26 S	34 E		100	SOUTH	780	EAST	LEA

¹¹ Bottom Hole Location If Different From Surface

UL or lot no.	Section	Township	Range	Lot Idn	Feet from the	North/South line	Feet from the	East/West line	County
P	27	26 S	34 E		330	SOUTH	660	EAST	LEA

¹² Dedicated Acres	¹³ Joint or Infill	¹⁴ Consolidation Code	¹⁵ Order No.
160			

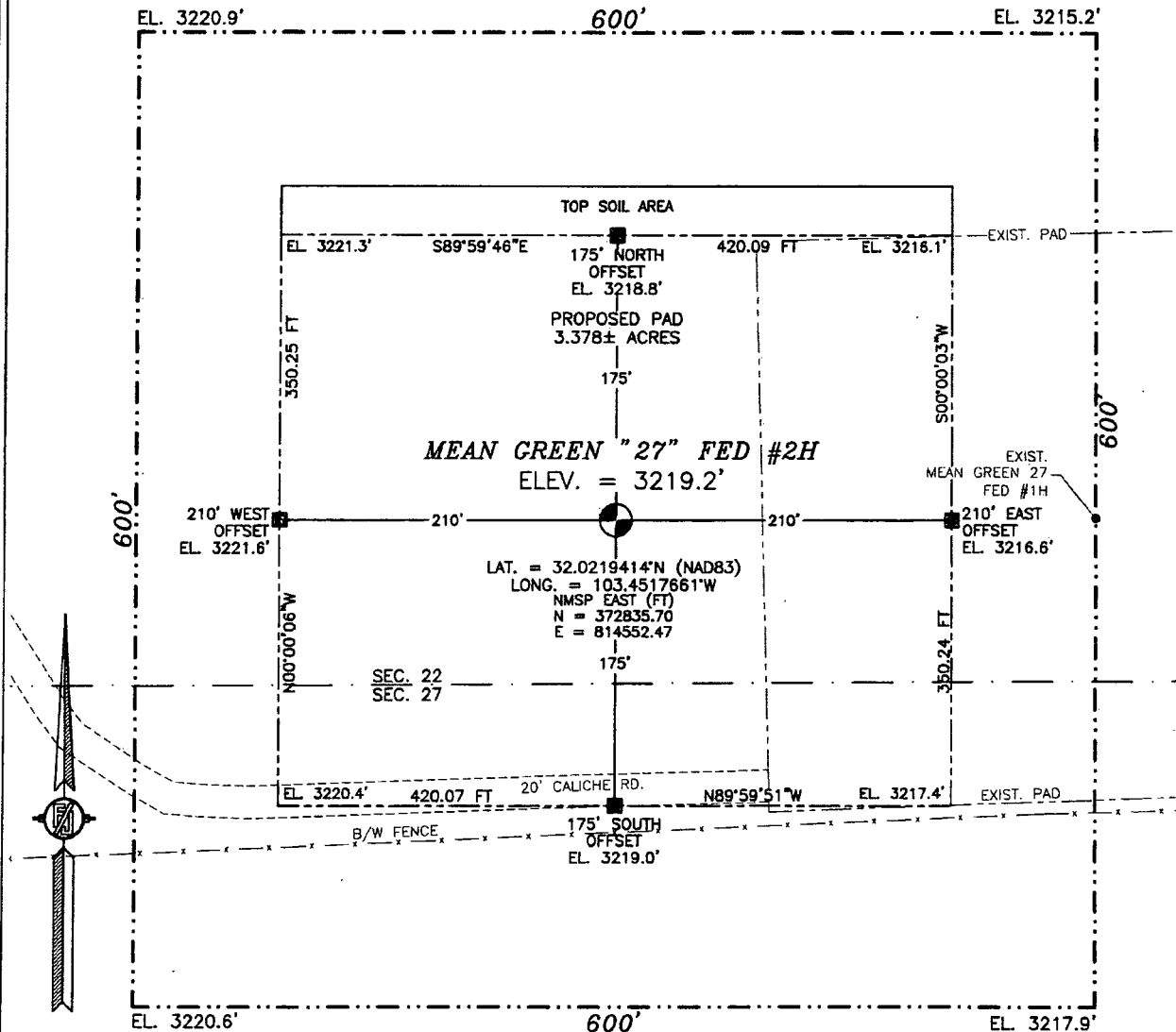
No allowable will be assigned to this completion until all interests have been consolidated or a non-standard unit has been approved by the division.

<p>NW CORNER SEC. 22 LAT. = 32.0361926°N LONG. = 103.4662911°W NMSP EAST (FT) N = 377983.66 E = 810009.13</p> <p>W/4 CORNER SEC. 22 LAT. = 32.0289466°N LONG. = 103.4662875°W NMSP EAST (FT) N = 375347.67 E = 810031.41</p> <p>SECTION CORNER LAT. = 32.0216943°N LONG. = 103.4662802°W NMSP EAST (FT) N = 372709.41 E = 810054.84</p> <p>W/4 CORNER SEC. 27 SCALED</p> <p>SW CORNER SEC. 27 LAT. = 32.0071803°N LONG. = 103.4662742°W NMSP EAST (FT) N = 367429.39 E = 810099.07</p>	<p>N/4 CORNER SEC. 22 LAT. = 32.0361866°N LONG. = 103.4577776°W NMSP EAST (FT) N = 378002.79 E = 812647.33</p> <p>NOTE: LATITUDE AND LONGITUDE COORDINATES ARE SHOWN USING THE NORTH AMERICAN DATUM OF 1983 (NAD83). LISTED NEW MEXICO STATE PLANE EAST COORDINATES ARE GRID (NAD83). BASIS OF BEARING AND DISTANCES USED ARE NEW MEXICO STATE PLANE EAST COORDINATES MODIFIED TO THE SURFACE.</p> <p>MEAN GREEN "27" FED #2H ELEV. = 3219.2 LAT. = 32.0219414°N (NAD83) LONG. = 103.4517661°W NMSP EAST (FT) N = 372835.70 E = 814552.47</p> <p>PP: 100 FSL & 780 FEL 22-26S-34E</p> <p>QUARTER CORNER LAT. = 32.0216811°N LONG. = 103.4577663°W NMSP EAST (FT) N = 372725.89 E = 812693.41</p> <p>S/4 CORNER SEC. 27 LAT. = 32.0071763°N LONG. = 103.4577600°W NMSP EAST (FT) N = 367449.20 E = 812738.29</p>	<p>NE CORNER SEC. 22 LAT. = 32.0361767°N LONG. = 103.4492534°W NMSP EAST (FT) N = 378020.70 E = 815288.88</p> <p>E/4 CORNER SEC. 22 LAT. = 32.0289204°N LONG. = 103.4492517°W NMSP EAST (FT) N = 375380.94 E = 815311.00</p> <p>SECTION CORNER LAT. = 32.0216603°N LONG. = 103.4492498°W NMSP EAST (FT) N = 372739.78 E = 815333.18</p> <p>E/4 CORNER SEC. 27 LAT. = 32.0144075°N LONG. = 103.4492496°W NMSP EAST (FT) N = 370101.33 E = 815354.87</p> <p>SE CORNER SEC. 27 LAT. = 32.0071541°N LONG. = 103.4492496°W NMSP EAST (FT) N = 367462.60 E = 815376.42</p>	<p>17 OPERATOR CERTIFICATION I hereby certify that the information contained herein is true and complete to the best of my knowledge and belief, and that this organization either owns a working interest or unleased mineral interest in the land including the proposed bottom hole location or has a right to drill this well at this location pursuant to a contract with an owner of such a mineral or working interest, or to a voluntary pooling agreement or a compulsory pooling order heretofore entered by the division.</p> <p><i>[Signature]</i> 4/23/2014 Signature Date</p> <p>David H. Cook Printed Name</p> <p>david.cook@dvn.com E-mail Address</p> <p>18 SURVEYOR CERTIFICATION I hereby certify that the well location shown on this plat was plotted from field notes of actual surveys made by me or under my supervision, and that the same is true and correct to the best of my belief.</p> <p>MARCH 5, 2014 Date of Survey</p> <p><i>[Signature]</i> Signature and Seal of Professional Surveyor</p> <p>Certificate Number: FILMON F. JARAMILLO PLS 12797 SURVEY NO. 2745</p>
--	---	--	---

FEB 03 2015

SECTION 22, TOWNSHIP 26 SOUTH, RANGE 34 EAST, N.M.P.M.
LEA COUNTY, STATE OF NEW MEXICO
SITE MAP

NOTE: LATITUDE AND LONGITUDE COORDINATES ARE SHOWN USING THE NORTH AMERICAN DATUM OF 1983 (NAD83). LISTED NEW MEXICO STATE PLANE EAST COORDINATES ARE GRID (NAD83). BASIS OF BEARING AND DISTANCES USED ARE NEW MEXICO STATE PLANE EAST COORDINATES MODIFIED TO THE SURFACE.



0 10 50 100 200

SCALE 1" = 100'

DIRECTIONS TO LOCATION

FROM STATE HWY. 128 AND CR. #2 (BATTLE AXE) GO SOUTH AND WEST ON CR. #2 12.0 MILES, TURN LEFT ON CALICHE ROAD AND GO SOUTH 0.6 MILES, TURN LEFT AND GO EAST 3.0 MILES; TURN RIGHT AND GO SOUTHEAST 3.56 MILES, TURN LEFT AND GO EAST 280' AND LOCATION IS ON THE LEFT (NORTH) 170'.

DEVON ENERGY PRODUCTION COMPANY, L.P.

MEAN GREEN "27" FED #2H

LOCATED 100 FT. FROM THE SOUTH LINE
AND 780 FT. FROM THE EAST LINE OF
SECTION 22, TOWNSHIP 26 SOUTH,
RANGE 34 EAST, N.M.P.M.
LEA COUNTY, STATE OF NEW MEXICO

MARCH 5, 2014

SURVEY NO. 2745

MADRON SURVEYING, INC. 301 SOUTH CANAL (575) 234-3341 CARLSBAD, NEW MEXICO

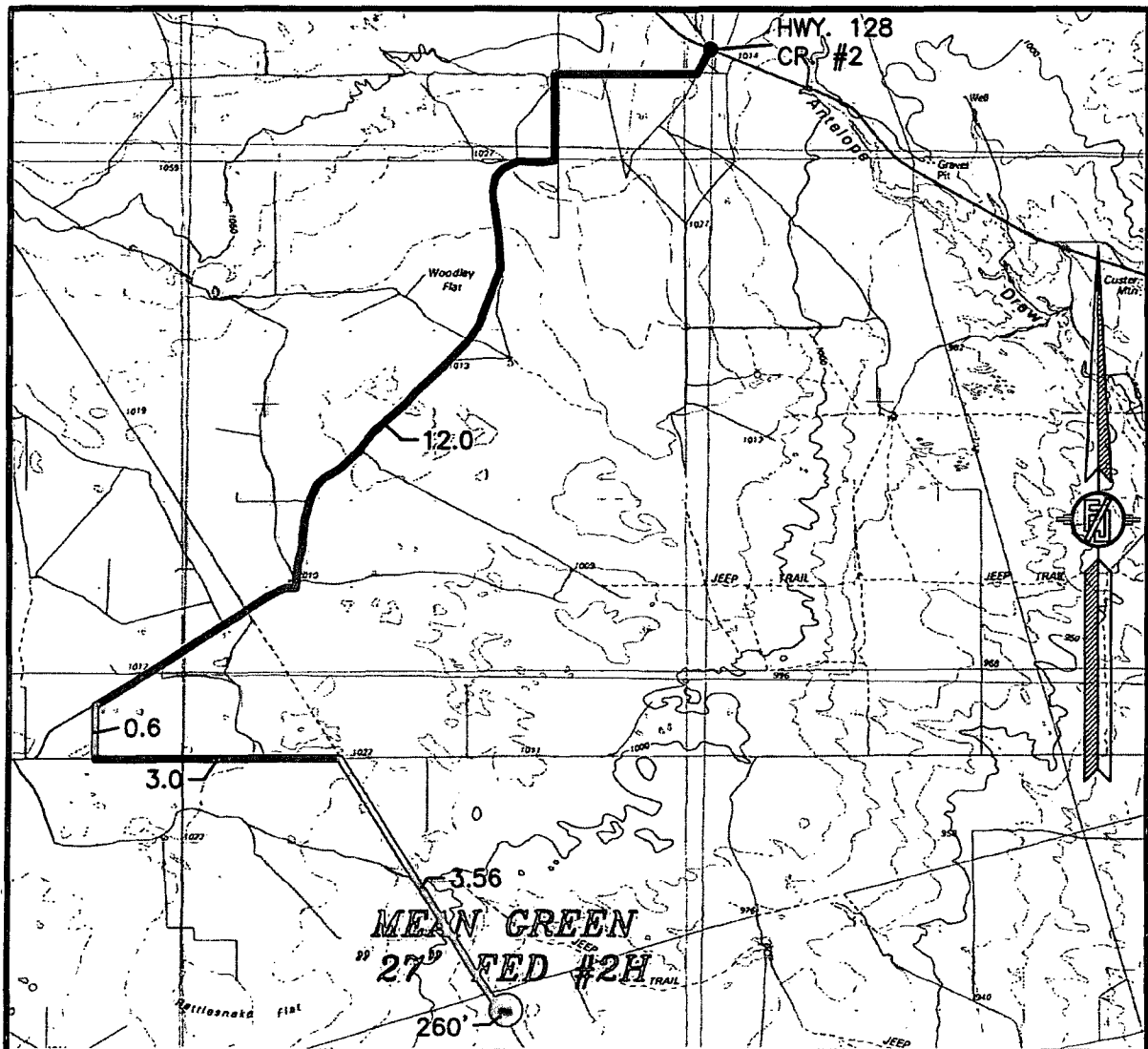
A detailed topographic map of the Mean Green area. The map features contour lines indicating elevation, with labels such as 3250, 3240, 3230, 3220, 3210, 3200, 3190, 3180, 3170, 3160, 3150, 3140, 3130, 3120, 3110, 3100, 3090, 3080, 3070, 3060, 3050, 3040, 3030, 3020, 3010, 3000, 2990, 2980, 2970, 2960, 2950, 2940, 2930, 2920, 2910, 2900, 2890, 2880, 2870, 2860, 2850, 2840, 2830, 2820, 2810, 2800, 2790, 2780, 2770, 2760, 2750, 2740, 2730, 2720, 2710, 2700, 2690, 2680, 2670, 2660, 2650, 2640, 2630, 2620, 2610, 2600, 2590, 2580, 2570, 2560, 2550, 2540, 2530, 2520, 2510, 2500, 2490, 2480, 2470, 2460, 2450, 2440, 2430, 2420, 2410, 2400, 2390, 2380, 2370, 2360, 2350, 2340, 2330, 2320, 2310, 2300, 2290, 2280, 2270, 2260, 2250, 2240, 2230, 2220, 2210, 2200, 2190, 2180, 2170, 2160, 2150, 2140, 2130, 2120, 2110, 2100, 2090, 2080, 2070, 2060, 2050, 2040, 2030, 2020, 2010, 2000, 1990, 1980, 1970, 1960, 1950, 1940, 1930, 1920, 1910, 1900, 1890, 1880, 1870, 1860, 1850, 1840, 1830, 1820, 1810, 1800, 1790, 1780, 1770, 1760, 1750, 1740, 1730, 1720, 1710, 1700, 1690, 1680, 1670, 1660, 1650, 1640, 1630, 1620, 1610, 1600, 1590, 1580, 1570, 1560, 1550, 1540, 1530, 1520, 1510, 1500, 1490, 1480, 1470, 1460, 1450, 1440, 1430, 1420, 1410, 1400, 1390, 1380, 1370, 1360, 1350, 1340, 1330, 1320, 1310, 1300, 1290, 1280, 1270, 1260, 1250, 1240, 1230, 1220, 1210, 1200, 1190, 1180, 1170, 1160, 1150, 1140, 1130, 1120, 1110, 1100, 1090, 1080, 1070, 1060, 1050, 1040, 1030, 1020, 1010, 1000, 990, 980, 970, 960, 950, 940, 930, 920, 910, 900, 890, 880, 870, 860, 850, 840, 830, 820, 810, 800, 790, 780, 770, 760, 750, 740, 730, 720, 710, 700, 690, 680, 670, 660, 650, 640, 630, 620, 610, 600, 590, 580, 570, 560, 550, 540, 530, 520, 510, 500, 490, 480, 470, 460, 450, 440, 430, 420, 410, 400, 390, 380, 370, 360, 350, 340, 330, 320, 310, 300, 290, 280, 270, 260, 250, 240, 230, 220, 210, 200, 190, 180, 170, 160, 150, 140, 130, 120, 110, 100, 90, 80, 70, 60, 50, 40, 30, 20, 10, 0. The map also shows a grid system with letters A through Z across the top and numbers 1 through 30 along the right side. A central square marker is located at approximately grid coordinate M-15. To the right of the marker, there is a label 'Andrews West Windmill'. Further to the right, there are labels 'Drill Hole' and 'Gravel Pit'. A north arrow is located in the upper right corner of the map. The map is titled 'MEAN GREEN' and '"27" FED #2H' in the center. The map is a black and white topographic map with contour lines and a grid system.

NOT TO SCALE

MARCH 5, 2014

MADRON SURVEYING, INC. 301 SOUTH CANAL CARLSBAD, NEW MEXICO
(575) 234-3341

SECTION 22, TOWNSHIP 26 SOUTH, RANGE 34 EAST, N.M.P.M.
LEA COUNTY, STATE OF NEW MEXICO
VICINITY MAP



DISTANCES IN MILES

NOT TO SCALE

DIRECTIONS TO LOCATION

FROM STATE HWY. 128 AND CR. #2 (BATTLE AXE) GO SOUTH AND WEST ON CR. #2 12.0 MILES, TURN LEFT ON CALICHE ROAD AND GO SOUTH 0.6 MILES, TURN LEFT AND GO EAST 3.0 MILES, TURN RIGHT AND GO SOUTHEAST 3.56 MILES, TURN LEFT AND GO EAST 260' AND LOCATION IS ON THE LEFT (NORTH) 170'.

DEVON ENERGY PRODUCTION COMPANY, L.P.

MEAN GREEN "27" FED #2H

LOCATED 100 FT. FROM THE SOUTH LINE
AND 780 FT. FROM THE EAST LINE OF
SECTION 22, TOWNSHIP 26 SOUTH,
RANGE 34 EAST, N.M.P.M.
LEA COUNTY, STATE OF NEW MEXICO

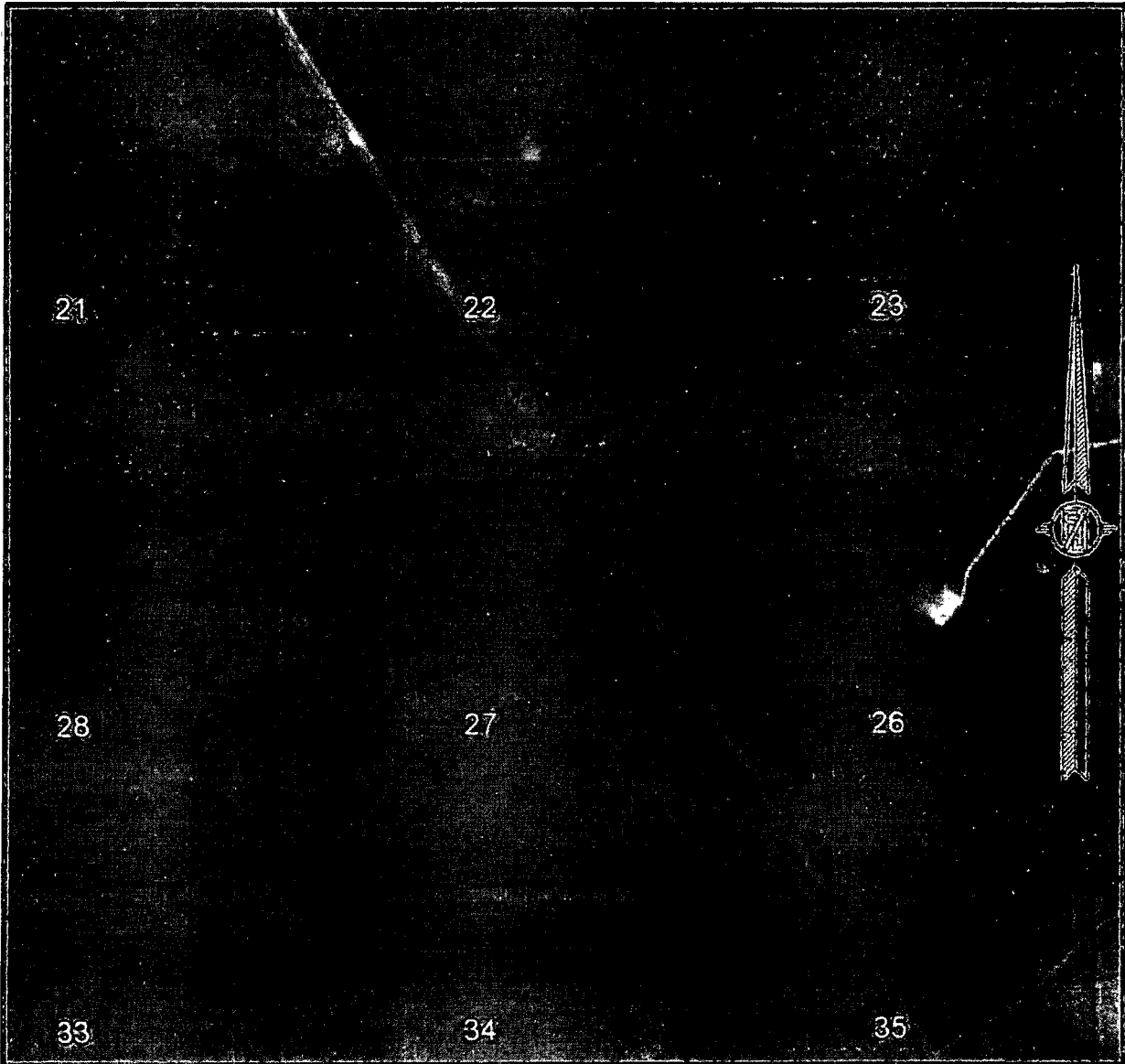
MARCH 5, 2014

SURVEY NO. 2745

MADRON SURVEYING, INC. 301 SOUTH CANAL (575) 234-3341 CARLSBAD, NEW MEXICO

SECTION 22, TOWNSHIP 26 SOUTH, RANGE 34 EAST, N.M.P.M.
LEA COUNTY, STATE OF NEW MEXICO

AERIAL PHOTO



NOT TO SCALE
AERIAL PHOTO:
GOOGLE EARTH
APRIL 2013

DEVON ENERGY PRODUCTION COMPANY, L.P.

MEAN GREEN "27" FED #2H

LOCATED 100 FT. FROM THE SOUTH LINE
AND 780 FT. FROM THE EAST LINE OF
SECTION 22, TOWNSHIP 26 SOUTH,
RANGE 34 EAST, N.M.P.M.
LEA COUNTY, STATE OF NEW MEXICO

MARCH 5, 2014

SURVEY NO. 2745

MADRON SURVEYING, INC. 301 SOUTH CANAL (575) 234-3341 CARLSBAD, NEW MEXICO

SECTION 22, TOWNSHIP 26 SOUTH, RANGE 34 EAST, N.M.P.M.
LEA COUNTY, STATE OF NEW MEXICO
AERIAL ACCESS ROUTE MAP



NOT TO SCALE
AERIAL PHOTO:
GOOGLE EARTH
APRIL 2013

DEVON ENERGY PRODUCTION COMPANY, L.P.

MEAN GREEN "27" FED #2H

LOCATED 100 FT. FROM THE SOUTH LINE
AND 780 FT. FROM THE EAST LINE OF
SECTION 22, TOWNSHIP 26 SOUTH,
RANGE 34 EAST, N.M.P.M.
LEA COUNTY, STATE OF NEW MEXICO

MARCH 5, 2014

SURVEY NO. 2745

MADRON SURVEYING, INC. 301 SOUTH CANAL
(575) 234-3341

CARLSBAD, NEW MEXICO

