

District I
1625 N. French Dr., Hobbs, NM 88240
Phone: (575) 393-6161 Fax: (575) 393-0720
District II
811 S. First St., Artesia, NM 88210
Phone: (575) 748-1283 Fax: (575) 748-9720
District III
1000 Rio Brazos Road, Aztec, NM 87410
Phone: (505) 334-6178 Fax: (505) 334-6170
District IV
1220 S. St. Francis Dr., Santa Fe, NM 87505
Phone: (505) 476-3460 Fax: (505) 476-3462

State of New Mexico
Energy, Minerals & Natural Resources
Department
OIL CONSERVATION DIVISION
1220 South St. Francis Dr.
Santa Fe, NM 87505

FORM C-102

Revised August 1, 2011

Submit one copy to appropriate

District Office

☐ AMENDED REPORT

WELL LOCATION AND ACREAGE DEDICATION PLAT

¹ API Number 30-025-42400	² Pool Code 97900	³ Pool Name Red Hills; Upper Bone Spring Shale
⁴ Property Code 314177	⁵ Property Name HAWK 26 FED	⁶ Well Number #7H
⁷ OGRID No. 7377	⁸ Operator Name EOG RESOURCES, INC.	⁹ Elevation 3528'

¹⁰Surface Location

UL or lot no. 0	Section 26	Township 24-S	Range 33-E	Lot Idn -	Feet from the 500'	North/South line SOUTH	Feet from the 1709'	East/West line EAST	County LEA
--------------------	---------------	------------------	---------------	--------------	-----------------------	---------------------------	------------------------	------------------------	---------------

UL or lot no. 0	Section 35	Township 24-S	Range 33-E	Lot Idn -	Feet from the 230'	North/South line SOUTH	Feet from the 1897'	East/West line EAST	County LEA
--------------------	---------------	------------------	---------------	--------------	-----------------------	---------------------------	------------------------	------------------------	---------------

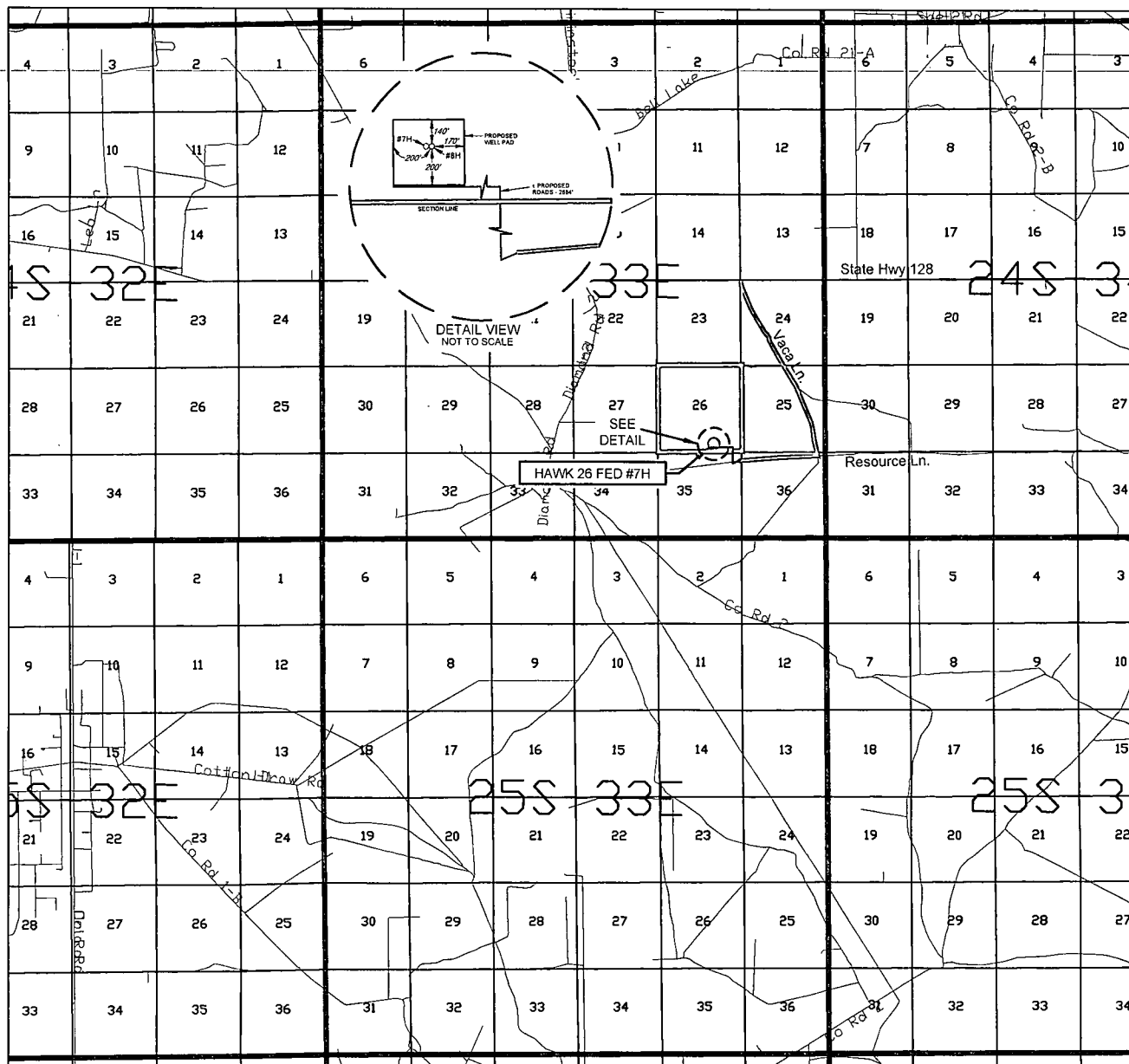
¹¹ Dedicated Acres 160	¹² Joint or Infill	¹³ Consolidation Code	¹⁴ Order No.
--------------------------------------	-------------------------------	----------------------------------	-------------------------

No allowable will be assigned to this completion until all interests have been consolidated or a non-standard unit has been approved by the division.

¹⁶	27	26			26	25	
<p>SURFACE LOCATION NEW MEXICO EAST NAD 1927 X=745558 Y=431052 LAT.: N 32.1825881 LONG.: W 103.5396306</p>							<p>¹⁷OPERATOR CERTIFICATION I hereby certify that the information contained herein is true and complete to the best of my knowledge and belief, and that this organization either owns a working interest or unleased mineral interest in the land including the proposed bottom hole location or has a right to drill this well at this location pursuant to a contract with an owner of such a mineral or working interest, or to a voluntary pooling agreement or a compulsory pooling order heretofore entered by the division.</p> <p>Signature: <i>Stan Wagner</i> Date: 4/7/14 Printed Name: Stan Wagner E-mail Address:</p>
<p>UPPER MOST PERF. NEW MEXICO EAST NAD 1927 X=745383 Y=430541 LAT.: N 32.1811868 LONG.: W 103.5402102</p>							<p>¹⁸SURVEYOR CERTIFICATION I hereby certify that the well location shown on this plat was plotted from field notes of actual surveys made by me or under my supervision, and that the same is true to the best of my belief.</p> <p>Date of Survey: 02/06/2014 Signature and Seal of Professional Surveyor: <i>Michael Brown</i> Certificate Number: 18329</p>
<p>BOTTOM HOLE LOCATION NEW MEXICO EAST NAD 1927 X=745412 Y=425501 LAT.: N 32.1673333 LONG.: W 103.5402340</p>							<p>LOWER MOST PERF. NEW MEXICO EAST NAD 1927 X=745412 Y=425601 LAT.: N 32.1676082 LONG.: W 103.5402335</p>

FEB 03 2015

EXHIBIT 2 VICINITY MAP



LEASE NAME & WELL NO.: HAWK 26 FED #7H

SECTION 26 TWP. 24-S RGE. 33-E SURVEY N.M.P.M.
COUNTY LEA STATE NM
DESCRIPTION 500' FSL & 1709' FEL

DISTANCE & DIRECTION FROM INT. OF NM-18 N & NM-128, GO WEST
ON NM-128 W ±22.0 MILES, THENCE SOUTH ON VACA LN. ±2.3 MILES,
THENCE WEST ON RESOURCE LN. ±0.9 MILES, THENCE SOUTH ON
PROPOSED ROAD ±515 FEET, THENCE NORTH ON PROPOSED ROAD
±995 FEET, THENCE WEST ON PROPOSED ROAD ±1374 FEET,
TO A POINT ±270 FEET SOUTH OF THE LOCATION.

THIS PROPOSED LOCATION SHOWN HEREON HAS BEEN SURVEYED ON THE GROUND UNDER MY SUPERVISION AND PREPARED ACCORDING TO THE EVIDENCE FOUND AT THE TIME OF SURVEY, AND DATA PROVIDED BY EOG RESOURCES, INC. THIS CERTIFICATION IS MADE AND LIMITED TO THOSE PERSONS OR ENTITIES SHOWN ON THE FACE OF THIS PLAT AND IS NON-TRANSFERABLE. THIS SURVEY IS CERTIFIED FOR THIS TRANSACTION ONLY.

ALL BEARINGS, DISTANCES, AND COORDINATE VALUES CONTAINED HEREON ARE GRID BASED UPON THE NEW MEXICO STATE PLANE COORDINATE SYSTEM, EAST ZONE OF THE NORTH AMERICAN DATUM 1927, U.S. SURVEY FEET.



SCALE: 1" = 10000'
0' 5000' 10000'

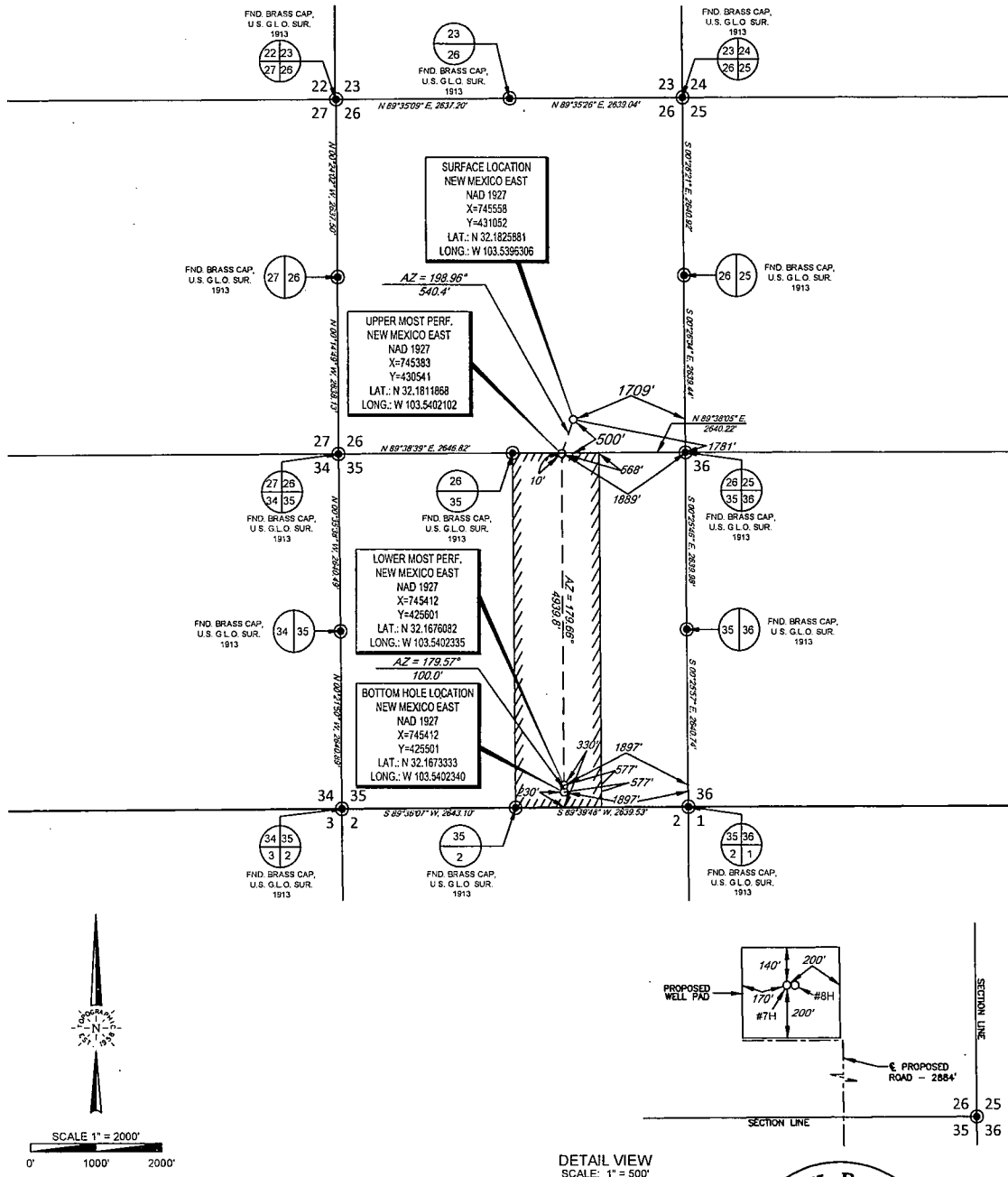


TOPOGRAPHIC
LOYALTY INNOVATION LEGACY

1400 EVERMAN PARKWAY, Ste. 197 • FT. WORTH, TEXAS 76140
TELEPHONE: (817) 744-7512 • FAX (817) 744-7548
2903 NORTH BIG SPRING • MIDLAND, TEXAS 79705
TELEPHONE: (432) 682-1653 OR (800) 767-1653 • FAX (432) 682-1743
WWW.TOPOGRAPHIC.COM

EXHIBIT 2A

SECTION 26, TOWNSHIP 24 SOUTH, RANGE 33 EAST, N.M.P.M.
LEA COUNTY, NEW MEXICO



LEASE NAME & WELL NO.: HAWK 26 FED #7H

SECTION 26 TWP 24-S RGE 33-E SURVEY N.M.P.M.
COUNTY LEA STATE NM
DESCRIPTION 500' FSL & 1709' FEL

DISTANCE & DIRECTION FROM INT. OF NM-18 N & NM-128,
GO WEST ON NM-128 W ±22.0 MILES, THENCE SOUTH ON VACA LN. ±2.3
MILES, THENCE WEST ON RESOURCE LN. ±0.9 MILES, THENCE SOUTH
ON PROPOSED ROAD ±515 FEET, THENCE NORTH ON PROPOSED
ROAD ±995 FEET, THENCE WEST ±1374 FEET, TO A POINT ±270 FEET
SOUTH OF THE LOCATION.

ALL BEARINGS, DISTANCES, AND COORDINATE VALUES CONTAINED HEREON ARE GRID
BASED UPON THE NEW MEXICO STATE PLANE COORDINATE SYSTEM, EAST ZONE OF THE
NORTH AMERICAN DATUM 1927, U.S. SURVEY FEET

THIS PROPOSED LOCATION SHOWN HEREON HAS BEEN SURVEYED ON THE GROUND UNDER MY
SUPERVISION AND PREPARED ACCORDING TO THE EVIDENCE FOUND AT THE TIME OF SURVEY, AND
DATA PROVIDED BY EGG RESOURCES, INC. THIS CERTIFICATION IS MADE AND LIMITED TO THOSE
PERSONS OR ENTITIES SHOWN ON THE FACE OF THIS PLAT AND IS NON-TRANSFERABLE. THIS
SURVEY IS CERTIFIED FOR THIS TRANSACTION ONLY.



Michael Blake Brown, P.S. No. 18329
FEBRUARY 06, 2014



TOPOGRAPHIC
LOYALTY INNOVATION LEGACY

1400 EVERMAN PARKWAY, Ste. 197 • FT. WORTH, TEXAS 76140
TELEPHONE: (817) 744-7512 • FAX (817) 744-7543
2903 NORTH BIG SPRING • MIDLAND, TEXAS 79705
TELEPHONE: (432) 682-1653 OR (800) 767-1653 • FAX (432) 682-1743
WWW.TOPOGRAPHIC.COM

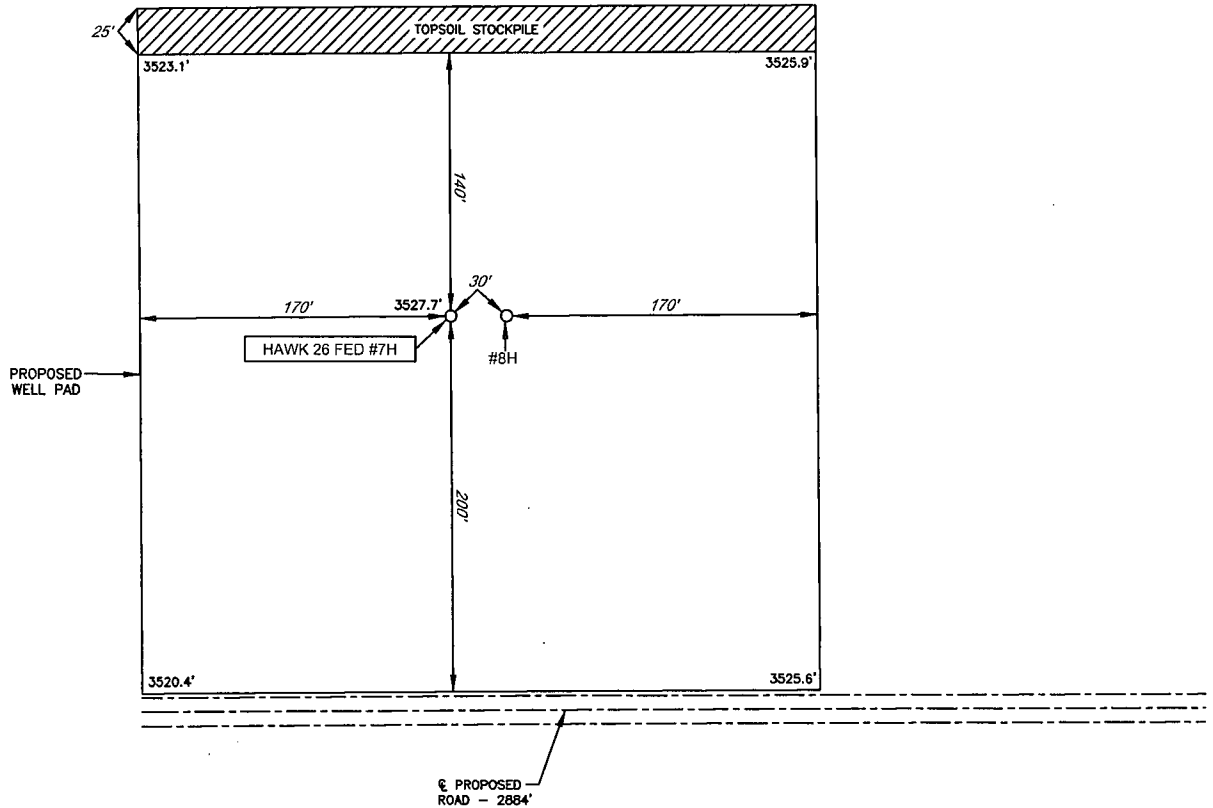


EXHIBIT 2B

eog resources, inc.

SECTION 26, TOWNSHIP 24 SOUTH, RANGE 33 EAST, N.M.P.M.
LEA COUNTY, NEW MEXICO

DETAIL VIEW
SCALE: 1" = 100'



LEASE NAME & WELL NO.: HAWK 26 FED #7H
#7H LATITUDE N 32.1825881 #7H LONGITUDE W 103.5396306

LEGEND

== == == == EXISTING ROAD
— — — — SECTION LINE
—— ———— EXISTING PIPELINE



SCALE: 1" = 100'
0' 50' 100'

ALL BEARINGS, DISTANCES, AND COORDINATE VALUES CONTAINED HEREON ARE GRID
BASED UPON THE NEW MEXICO STATE PLANE COORDINATE SYSTEM, EAST ZONE OF THE
NORTH AMERICAN DATUM 1927, U.S. SURVEY FEET

THIS PROPOSED PAD SITE LOCATION SHOWN HEREON HAS BEEN SURVEYED ON THE GROUND UNDER
MY SUPERVISION AND PREPARED ACCORDING TO THE EVIDENCE FOUND AT THE TIME OF SURVEY,
AND DATA PROVIDED BY EOG RESOURCES, INC. THIS CERTIFICATION IS MADE AND LIMITED TO THOSE
PERSONS OR ENTITIES SHOWN ON THE FACE OF THIS PLAT AND IS NON-TRANSFERABLE. THIS
SURVEY IS CERTIFIED FOR THIS TRANSACTION ONLY.



TOPOGRAPHIC
LOYALTY INNOVATION LEGACY

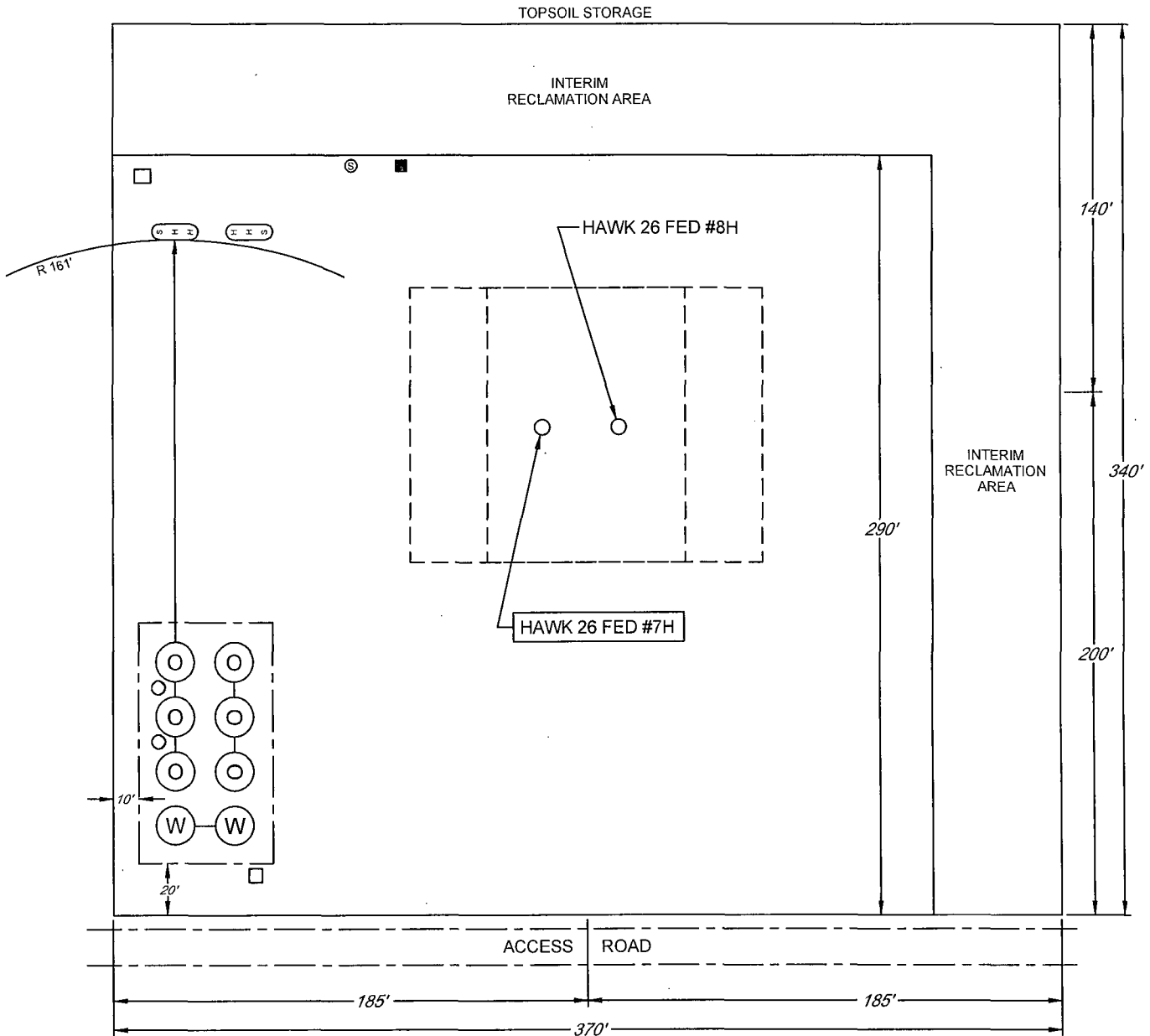
1400 EVERMAN PARKWAY, Ste. 197 • FT. WORTH, TEXAS 76140
TELEPHONE: (817) 744-7512 • FAX (817) 744-7548
2903 NORTH BIG SPRING • MIDLAND, TEXAS 79705
TELEPHONE: (432) 682-1653 OR (800) 767-1653 • FAX (432) 682-1743
WWW.TOPOGRAPHIC.COM

ORIGINAL DOCUMENT SIZE: 8.5" X 11"

EXHIBIT 2C

RECLAMATION AND FACILITY DIAGRAM - PRODUCTION FACILITIES DIAGRAM

SECTION 26, TOWNSHIP 24 SOUTH, RANGE 33 EAST, N.M.P.M.
LEA COUNTY, NEW MEXICO
DETAIL VIEW
SCALE: 1" = 60'



LEASE NAME & WELL NO.: HAWK 26 FED #7H
#7H LATITUDE N 32.1825881 #7H LONGITUDE W 103.5396306

LEGEND

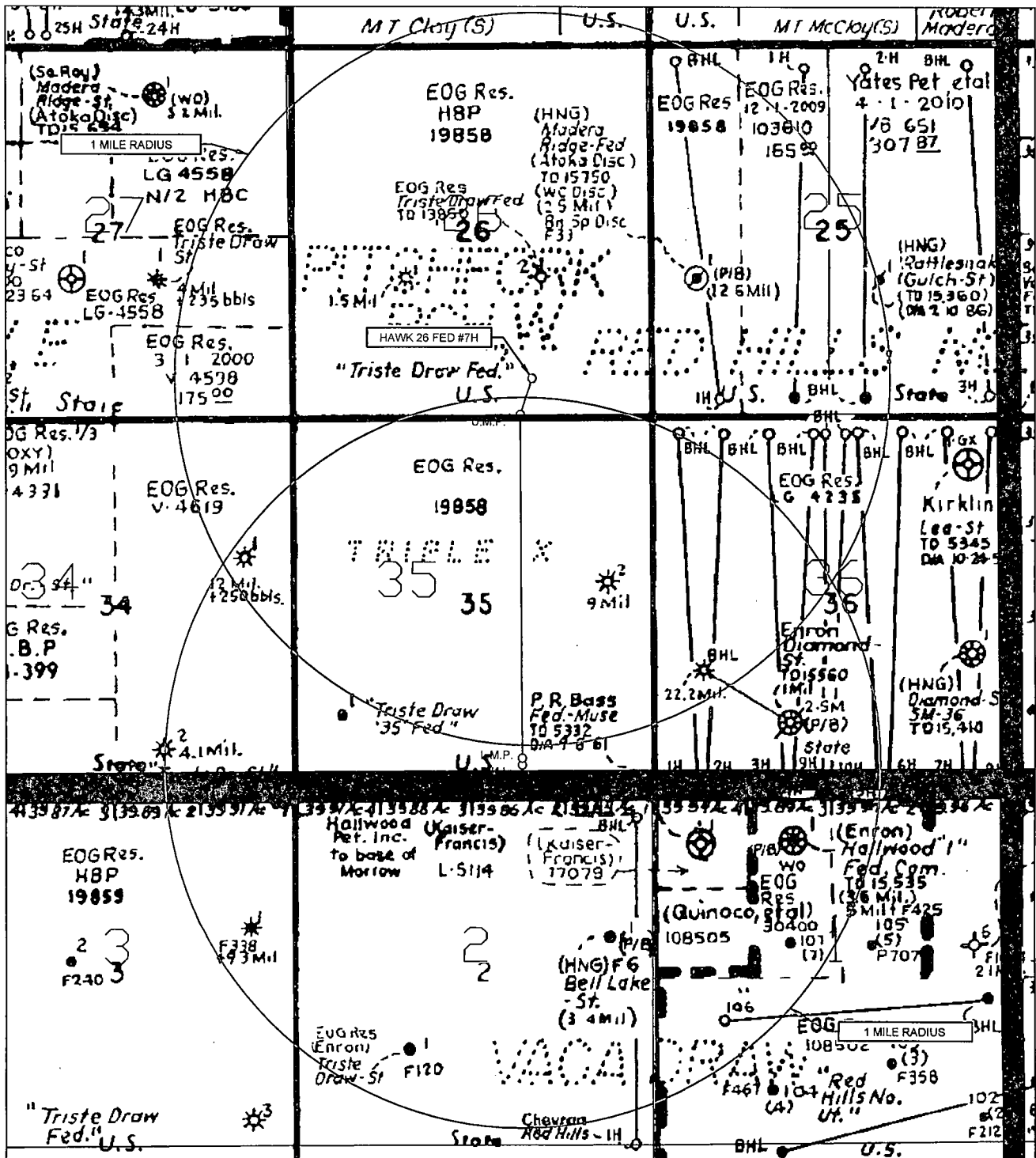
	500 BBL OIL TANK		FLARE SEPARATOR
	500 BBL WATER TANK		VRU
	36 x 15 HEATER/SEPARATOR		48 X 25 VRT
			FP FLARE
			OP FLARE

EXHIBIT 3



EOG resources, inc.

SECTION 26, TOWNSHIP 24 SOUTH, RANGE 33 EAST, N.M.P.M.
LEA COUNTY, NEW MEXICO



LEASE NAME & WELL NO.: HAWK 26 FED #7H

SCALE: NTS

#7H LATITUDE N 32.1825881

#7H LONGITUDE W 103.5396306

LEGEND

ALL BEARINGS, DISTANCES, AND COORDINATE VALUES CONTAINED HEREON ARE GRID BASED UPON THE NEW MEXICO STATE PLANE COORDINATE SYSTEM, EAST ZONE OF THE NORTH AMERICAN DATUM 1927, U.S. SURVEY FEET

THIS EASEMENT/SERVITUDE LOCATION SHOWN HEREON HAS BEEN SURVEYED ON THE GROUND UNDER MY SUPERVISION AND PREPARED ACCORDING TO THE EVIDENCE FOUND AT THE TIME OF SURVEY, AND DATA PROVIDED BY EOG RESOURCES, INC. THIS CERTIFICATION IS MADE AND LIMITED TO THOSE PERSONS OR ENTITIES SHOWN ON THE FACE OF THIS PLAT AND IS NON-TRANSFERABLE. THIS SURVEY IS CERTIFIED FOR THIS TRANSACTION ONLY.

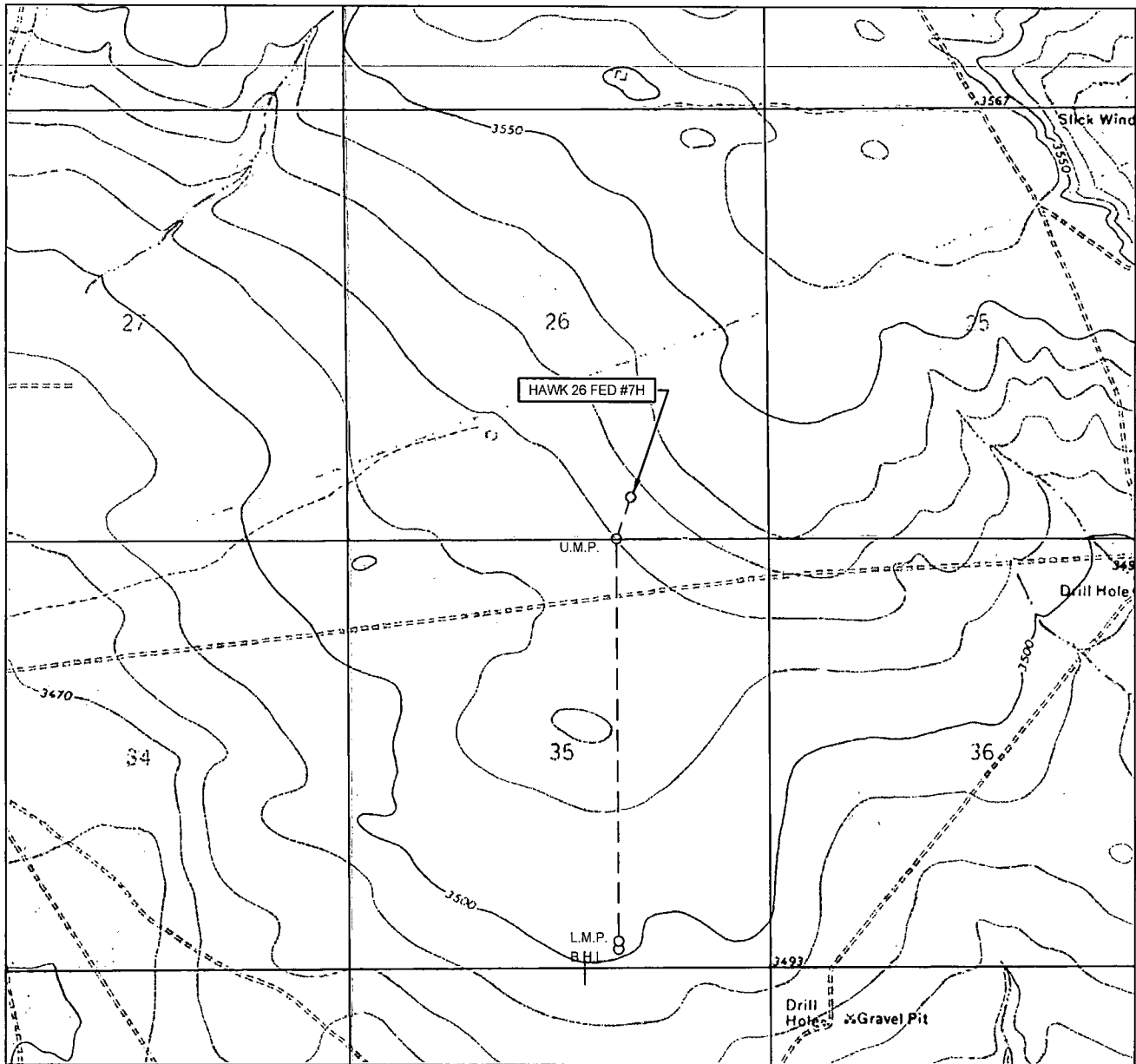
- EXISTING ROAD
- SECTION LINE
- EXISTING PIPELINE
- OVERHEAD ELECTRIC
- FENCE LINE



TOPOGRAPHIC
LOYALTY INNOVATION LEGACY

1400 EVERMAN PARKWAY, Ste. 197 • FT. WORTH, TEXAS 76140
TELEPHONE: (817) 744-7512 • FAX (817) 744-7548
2903 NORTH BIG SPRING • MIDLAND, TEXAS 79705
TELEPHONE: (432) 682-1653 OR (800) 767-1653 • FAX (432) 682-1743
WWW.TOPOGRAPHIC.COM

LOCATION & ELEVATION VERIFICATION MAP



LEASE NAME & WELL NO.: HAWK 26 FED #7H

SECTION 26 TWP 24-S RGE 33-E SURVEY N.M.P.M.
 COUNTY LEA STATE NM ELEVATION 3528'
 DESCRIPTION 500' FSL & 1709' FEL

LATITUDE N 32.1825881 LONGITUDE W 103.5396306



SCALE: 1" = 2000'
 0' 1000' 2000'



TOPOGRAPHIC
 LOYALTY INNOVATION LEGACY

1400 EVERMAN PARKWAY, Ste. 197 • FT. WORTH, TEXAS 76140
 TELEPHONE: (817) 744-7512 • FAX (817) 744-7548
 2903 NORTH BIG SPRING • MIDLAND, TEXAS 79705
 TELEPHONE: (432) 682-1653 OR (800) 767-1653 • FAX (432) 682-1743
 WWW.TOPOGRAPHIC.COM

THIS PROPOSED LOCATION SHOWN HEREON HAS BEEN SURVEYED ON THE GROUND UNDER MY SUPERVISION AND PREPARED ACCORDING TO THE EVIDENCE FOUND AT THE TIME OF SURVEY, AND DATA PROVIDED BY EOG RESOURCES, INC. THIS CERTIFICATION IS MADE AND LIMITED TO THOSE PERSONS OR ENTITIES SHOWN ON THE FACE OF THIS PLAT AND IS NON-TRANSFERABLE. THIS SURVEY IS CERTIFIED FOR THIS TRANSACTION ONLY.

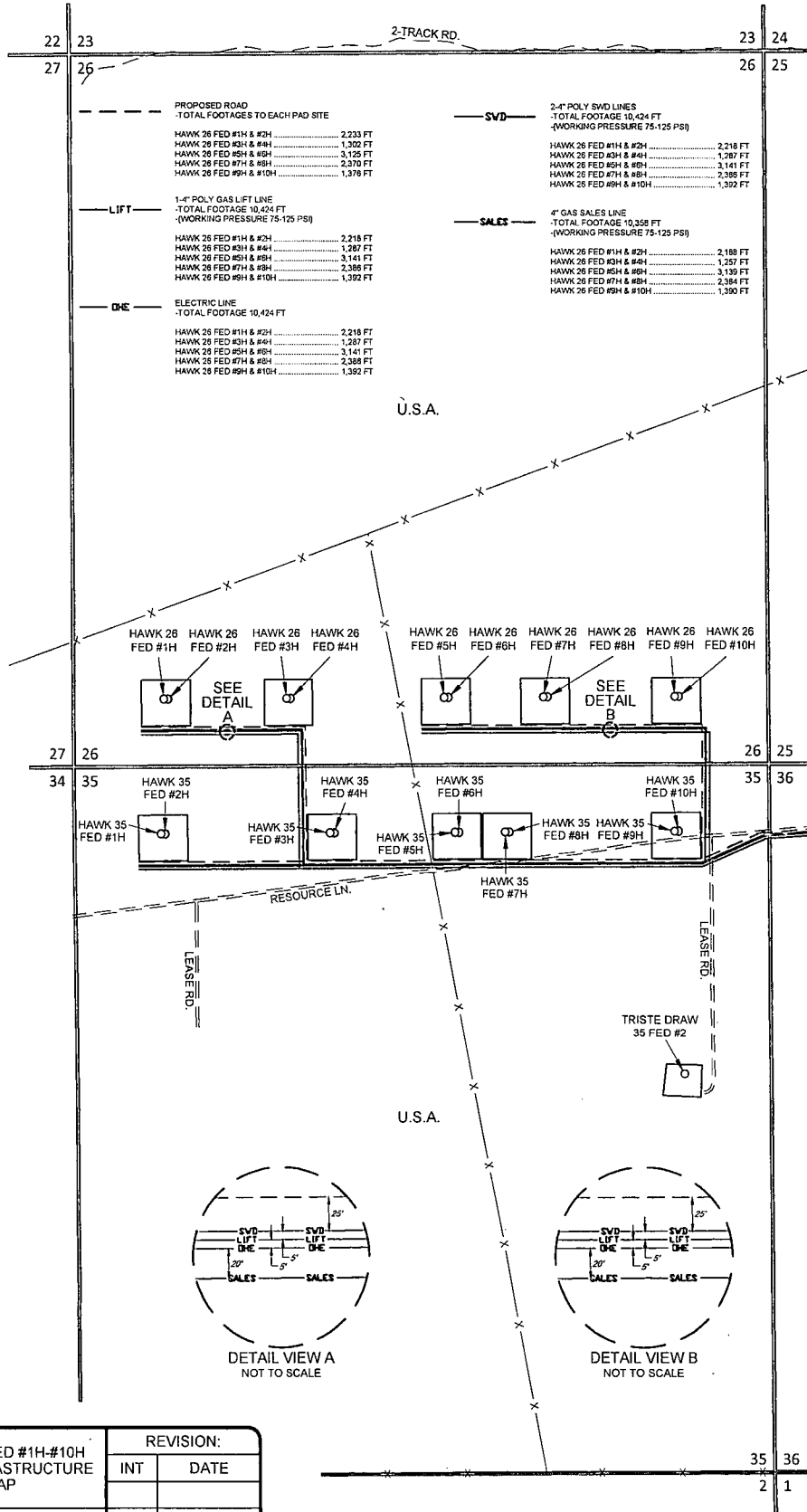
ALL BEARINGS, DISTANCES, AND COORDINATE VALUES CONTAINED HEREON ARE GRID BASED UPON THE NEW MEXICO STATE PLANE COORDINATE SYSTEM, EAST ZONE OF THE NORTH AMERICAN DATUM 1927, U.S. SURVEY FEET.

SCALE 1" = 1000'
0' 1000' 2000'

EXHIBIT 5

SECTION 26 & 35, TOWNSHIP 24 SOUTH, RANGE 33 EAST, N.M.P.M.
LEA COUNTY, NEW MEXICO

HAWK 26 FED #1H-#10H LEASE INFRASTRUCTURE MAP



HAWK 26 FED #1H-#10H LEASE INFRASTRUCTURE MAP	REVISION:	
	INT	DATE
DATE: 03/13/14		
FILE: SK HAWK26FED_1H-10H_INFRASTRUCTURE_MAP		
DRAWN BY: A.C.C.		
SHEET: 1 OF 1		

eog resources, inc.