

HOBBSCD

District I
1625 N. French Dr., Hobbs, NM 88240
Phone: (505) 393-6161 Fax: (505) 393-0720
District II
811 S. First St., Artesia, NM 88210
Phone: (505) 748-1283 Fax: (505) 748-9720
District III
1000 Rio Brazos Road, Aztec, NM 87410
Phone: (505) 334-6178 Fax: (505) 334-6170
District IV
1220 S. St. Francis Dr., Santa Fe, NM 87505
Phone: (505) 476-3460 Fax: (505) 476-3462

FEB 03 2015

RECEIVED

State of New Mexico
Minerals & Natural Resources Department
OIL CONSERVATION DIVISION
1220 South St. Francis Dr.
Santa Fe, NM 87505

Form C-102
Revised August 1, 2011
Submit one copy to
appropriate
District Office

★ ☒ AMENDED REPORT
(UL corrected
from 3 to C)

WELL LOCATION AND ACREAGE DEDICATION PLAT

1 API Number 30-025-42231	2 Pool Code 22900	3 Pool Name Eunice; BLI-DR-TU, North
4 Property Code 22503	5 Property Name NORTH EAST DRINKARD UNIT	6 Well Number #725
7 OGRID No. 873	8 Operator Name APACHE CORPORATION	9 Elevation 3412.54

10 Surface Location

UL or lot no.	Section	Township	Range	Lot Idn	Feet from the	North/South line	Feet from the	East/West line	County
★ C	22	21 S	37 E		350	NORTH	2,125	WEST	LEA

11 Bottom Hole Location If Different From Surface

UL or lot no.	Section	Township	Range	Lot Idn	Feet from the	North/South line	Feet from the	East/West line	County
★ C	22	21 S	37 E		60	NORTH	1,940	WEST	LEA

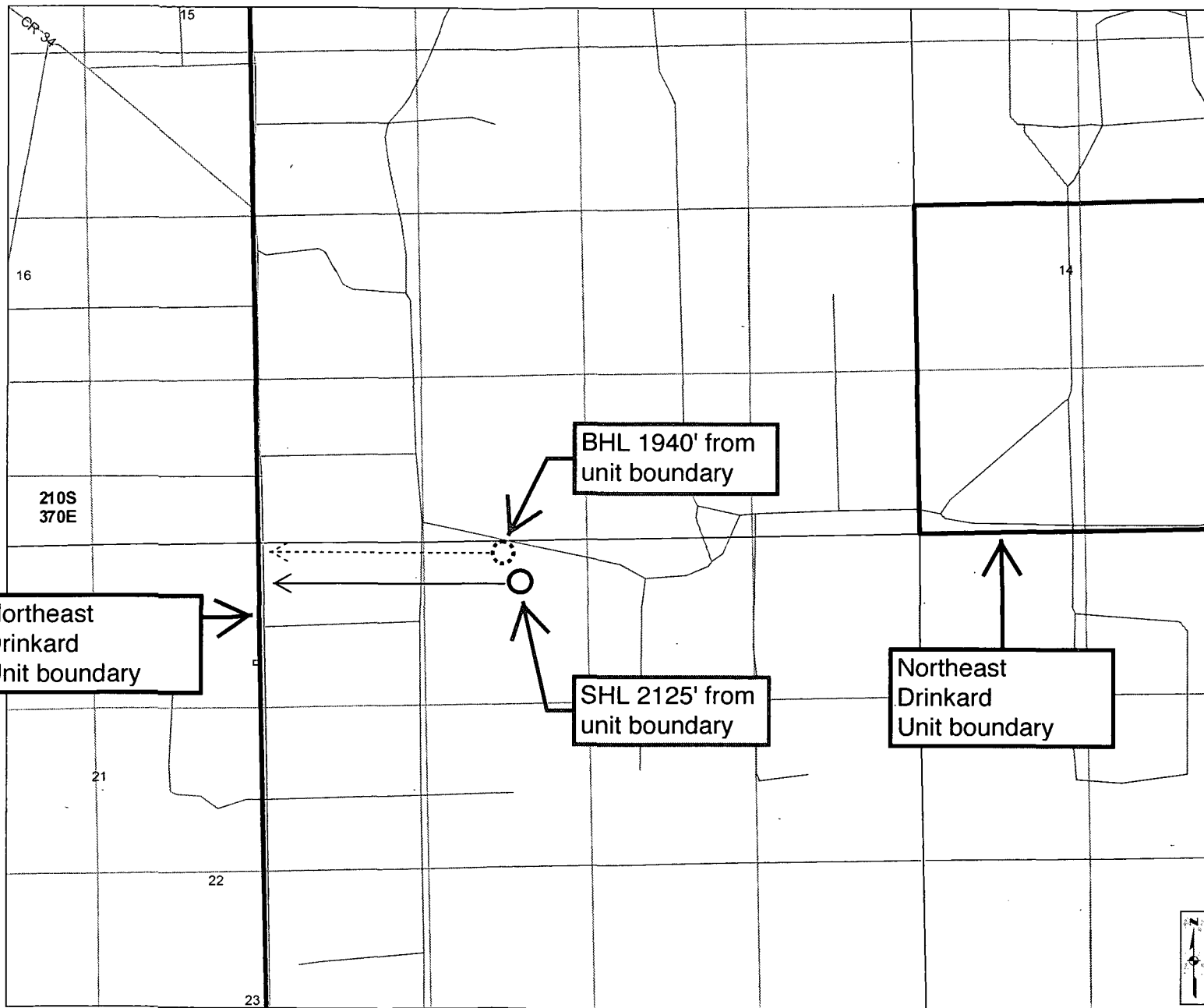
No allowable will be assigned to this completion until all interests have been consolidated or a non-standard unit has been approved by the division.

SECTION 22, TOWNSHIP 21 SOUTH, RANGE 37 EAST P.M.

<p>17 OPERATOR CERTIFICATION</p> <p>I hereby certify that the information contained herein is true and complete to the best of my knowledge and belief, and that this organization either owns a working interest or unleased mineral interest in the land including the proposed bottom hole location or has a right to drill this well at this location pursuant to a contract with an owner of such a mineral or working interest, or to a voluntary pooling agreement or a compulsory pooling order heretofore entered by the division.</p> <p>Signature: <i>Brian Wood</i> Date: 1-29-15</p> <p>Printed Name: Brian Wood</p> <p>E-mail Address: brian@permitswest.com</p>		<p>18 SURVEYOR CERTIFICATION</p> <p>I hereby certify that the well location shown on this plat was plotted from field notes of actual surveys made by me or under my supervision, and that the same is true and correct to the best of my belief.</p> <p>12-23-2014</p> <p>Date of Survey</p> <p>Signature and Seal of Professional Surveyor</p> <p><i>Jeffery E. Hudson</i></p> <p>Certificate Number: 20559</p>	
--	--	---	--

BHL is 1940' and SHL is 2125' from closest unit boundary. See attached map.

cc: Cooper
FEB 04 2015



Cartographic Features

- County Boundaries
- County Seats
- City, Town or Village
- SLO District Offices
- SLO District Boundary
- Hwy Mileposts
- Interstate
- NM Hwy
- Continental Divide
- US Hwy
- Local Road

Federal Minerals Ownership

- All Minerals
- Coal Only
- Oil and Gas Only
- Oil, Gas and Coal Only
- Other Minerals

State Trust Lands

- Surface Estate
- Subsurface Estate
- Surface and Subsurface Estate

State Leases

- Oil and Gas Leases
- Agricultural Leases
- Commercial Leases
- Minerals Leases
- Not Available for Oil and Gas Leasing
- Oil and Gas Leasing Influenced by Restriction

Oil and Gas Related Features

- Oil and Gas Unit Boundary
- Participating Areas in Units
- Geologic Regions
- Volcanic Vents
- NMOCD Order R-111-P
- Potash Enclave Outline

NMOCD Oil and Gas Wells

- CO₂
- Injection
- Oil
- Water
- Gas
- Miscellaneous
- Salt Water Disposal
- DA or PA

New Mexico State Land Office

Oil, Gas and Minerals

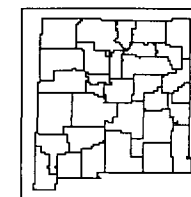
0.0 0.03 0.075 0.15 0.225 0.3 Miles

Universal Transverse Mercator Projection, Zone 13
1983 North American Datum

The New Mexico State Land Office assumes no responsibility or liability for, or in connection with, the accuracy, reliability or use of the information provided here, in State Land Office data layers or any other data layer.

Land Office Geographic Information Center
logic@slo.state.nm.us

Created On: 1/29/2015 4:16:44 PM



www.nmstateands.org