

HOBSOCD  
Perforations will be 1,040' or more from unit boundary. See attached map.

District I  
1625 N. French Dr., Hobbs, NM 88240  
Phone: (575) 393-6161 Fax: (575) 393-0720  
District II  
811 S. First St., Artesia, NM 88210  
Phone: (575) 748-1283 Fax: (575) 748-9720  
District III  
1050 Rio Brazos Road, Aztec, NM 87410  
Phone: (505) 334-6178 Fax: (505) 334-6170  
District IV  
1220 S. St. Francis Dr., Santa Fe, NM 87505  
Phone: (505) 476-3460 Fax: (505) 476-3462

FEB 02 2015

RECEIVED

State of New Mexico  
Energy, Minerals & Natural Resources Department  
OIL CONSERVATION DIVISION  
1220 South St. Francis Dr.  
Santa Fe, NM 87505

Form C-102  
Revised August 1, 2011  
Submit one copy to  
appropriate  
District Office

AMENDED REPORT  
(UL corrected  
from 13 to M)

WELL LOCATION AND ACREAGE DEDICATION PLAT

|                              |   |   |
|------------------------------|---|---|
| 1 API Number<br>30-025-42233 | 2 Pool Code<br>22900                        | 3 Pool Name<br>Eunice; BLI-DR-TU, North |
| 4 Property Code<br>22503     | 5 Property Name<br>NORTH EAST DRINKARD UNIT | 6 Well Number<br>#724                   |
| 7 OGRID No.<br>873           | 8 Operator Name<br>APACHE CORPORATION       | 9 Elevation<br>3430.42                  |

10 Surface Location

| UL or lot no. | Section | Township | Range | Lot Idn | Feet from the | North/South line | Feet from the | East/West line | County |
|---------------|---------|----------|-------|---------|---------------|------------------|---------------|----------------|--------|
| M             | 15      | 21 S     | 37 E  |         | 320           | SOUTH            | 1,040         | WEST           | LEA    |

11 Bottom Hole Location If Different From Surface

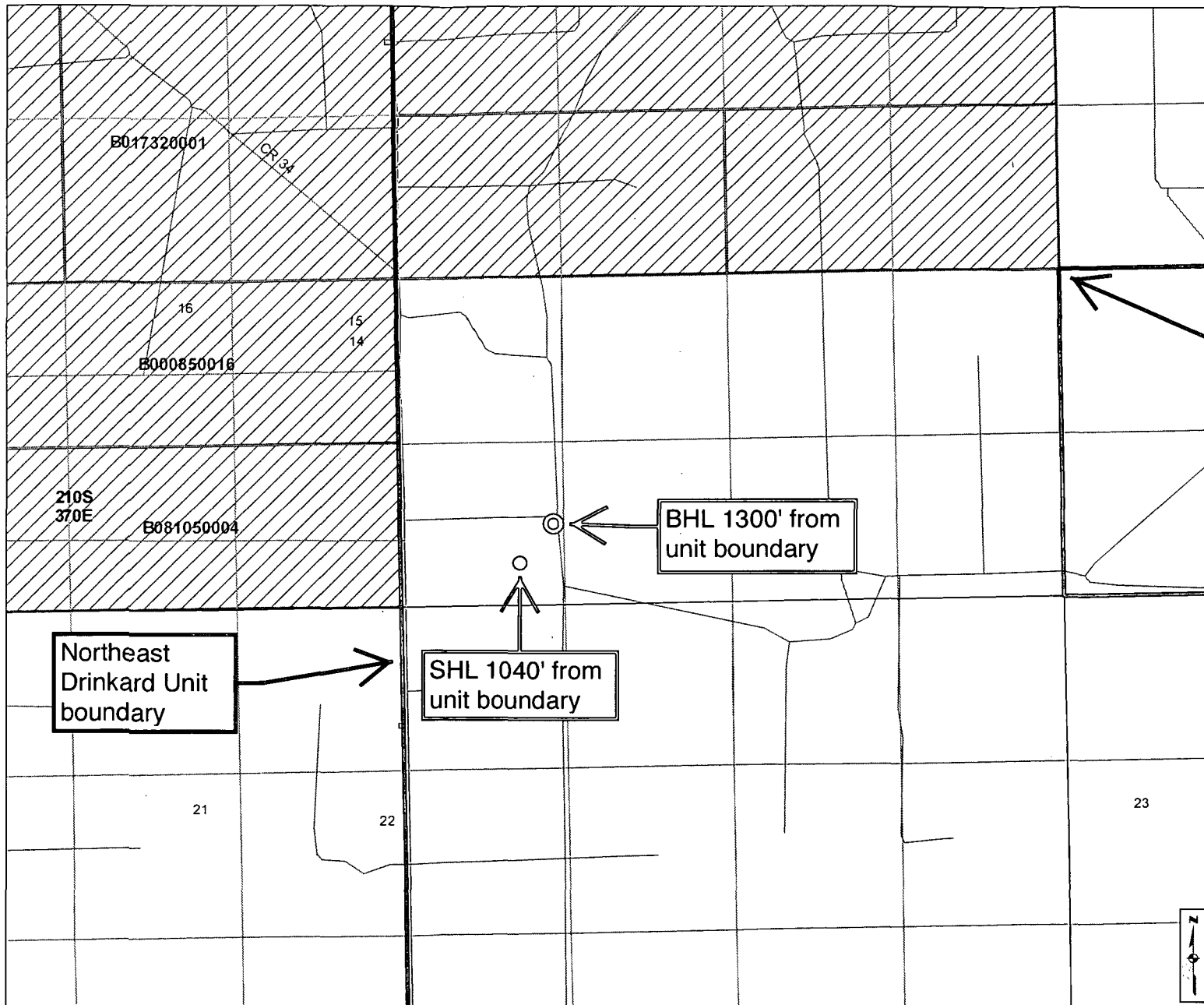
| UL or lot no. | Section | Township | Range | Lot Idn | Feet from the | North/South line | Feet from the | East/West line | County |
|---------------|---------|----------|-------|---------|---------------|------------------|---------------|----------------|--------|
| M             | 15      | 21 S     | 37 E  |         | 650           | SOUTH            | 1,300         | WEST           | LEA    |

No allowable will be assigned to this completion until all interests have been consolidated or a non-standard unit has been approved by the division.

SECTION 15, TOWNSHIP 21 SOUTH, RANGE 37 EAST P.M.

|   |   |  |
|---|---|--|
| <p>FOUND 1/2 INCH IRON ROD, CAPPED<br/>LAT: 32.45520 N<br/>LONG: -103.15870 W<br/>NADSPCE N: 542473.326<br/>NADSPCE E: 862177.373<br/>(N.A.D. 27)<br/>LAT: 32.45610 N<br/>LONG: -103.15920 W<br/>NADSPCE N: 542533.491<br/>NADSPCE E: 903351.479<br/>(N.A.D. 83)</p>  | <p>FOUND SPIKE NAIL IN STONE MOUND<br/>LAT: 32.45520 N<br/>LONG: -103.14162 W<br/>NADSPCE N: 542543.162<br/>NADSPCE E: 867452.319<br/>(N.A.D. 27)<br/>LAT: 32.45640 N<br/>LONG: -103.14213 W<br/>NADSPCE N: 542602.945<br/>NADSPCE E: 908636.307<br/>(N.A.D. 83)</p>  | <p>17 OPERATOR CERTIFICATION<br/>I hereby certify that the information contained herein is true and complete to the best of my knowledge and belief, and that this organization either owns a working interest or unleased mineral interest in the land including the proposed bottom hole location or has a right to drill this well at this location pursuant to a contract with an owner of such a mineral or working interest, or to a voluntary pooling agreement or a compulsory pooling order heretofore entered by the division.<br/><br/>Signature: <i>Brian Wood</i> Date: 1-31-15<br/>Printed Name: brian@permitswest.com<br/>E-mail Address:</p> |
| <p>SURFACE LOCATION<br/>DO LAT: 32.47263 N<br/>DO LONG: -103.15528 W<br/>DMS LAT: 32°28'20.155" N<br/>DMS LONG: 103°09'16.094" W<br/>NADSPCE N: 537528.763<br/>NADSPCE E: 863311.407<br/>(N.A.D. 27)<br/>DO LAT: 32.47285 N<br/>DO LONG: -103.15576 W<br/>DMS LAT: 32°28'20.590" N<br/>DMS LONG: 103°09'20.796" W<br/>NADSPCE N: 537528.702<br/>NADSPCE E: 904493.639<br/>(N.A.D. 83)</p> | <p>BOTTOM HOLE LOCATION<br/>DO LAT: 32.47314 N<br/>DO LONG: -103.15446 W<br/>DMS LAT: 32°28'23.426" N<br/>DMS LONG: 103°09'16.068" W<br/>NADSPCE N: 537623.154<br/>NADSPCE E: 863363.242<br/>(N.A.D. 27)<br/>DO LAT: 32.47354 N<br/>DO LONG: -103.15493 W<br/>DMS LAT: 32°28'23.860" N<br/>DMS LONG: 103°09'17.760" W<br/>NADSPCE N: 537622.002<br/>NADSPCE E: 904745.454<br/>(N.A.D. 83)</p> | <p>18 SURVEYOR CERTIFICATION<br/>I hereby certify that the well location shown on this plat was plotted from field notes of actual surveys made by me or under my supervision, and that the same is true and correct to the best of my belief.<br/><br/>10-02-2014<br/>Date of Survey<br/>Signature and Seal of Professional Surveyor<br/><i>Jeffery E. Hudson</i><br/>Certificate Number 20559</p>  |

FEB 04 2015



### Cartographic Features

- County Boundaries
- County Seats
- City, Town or Village
- SLO District Offices
- SLO District Boundary
- Hwy Mileposts
- Interstate
- NM Hwy
- US Hwy
- Local Road
- Continental Divide

### Federal Minerals Ownership

- All Minerals
- Coal Only
- Oil and Gas Only
- Oil, Gas and Coal Only
- Other Minerals

### State Trust Lands

- Surface Estate
- Subsurface Estate
- Surface and Subsurface Estate

### State Leases

- Oil and Gas Leases
- Agricultural Leases
- Commercial Leases
- Minerals Leases
- Not Available for Oil and Gas Leasing
- Oil and Gas Leasing Influenced by Restriction

### Oil and Gas Related Features

- Oil and Gas Unit Boundary
- Participating Areas in Units
- Geologic Regions
- Volcanic Vents
- NMOC Order R-111-P
- Potash Enclave Outline

### NMOC Oil and Gas Wells

- CO<sub>2</sub>
- Injection
- Oil
- Water
- Gas
- Miscellaneous
- Salt Water Disposal
- DA or PA

**Northeast Drinkard Unit boundary**

**Northeast Drinkard Unit boundary**

**BHL 1300' from unit boundary**

**SHL 1040' from unit boundary**

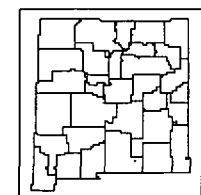
## New Mexico State Land Office Oil, Gas and Minerals

0 0.05 0.1 0.2 0.3 0.4 Miles  
Universal Transverse Mercator Projection, Zone 13  
1983 North American Datum

The New Mexico State Land Office assumes no responsibility or liability for, or in connection with, the accuracy, reliability or use of the information provided here, in State Land Office data layers or any other data layer.

Land Office Geographic Information Center  
logic@slo.state.nm.us

Created On: 1/31/2015 3:06:40 PM



www.nmstatelands.org