

Well is 1,983 from closest unit boundary. See attached map.

District I  
1625 N. French Dr., Hobbs, NM 88240  
Phone: (505) 393-6161 Fax: (505) 393-0720  
District II  
811 S. First St., Artesia, NM 88210  
Phone: (505) 748-1283 Fax: (505) 748-9720  
District III  
1000 Rio Brazos Road, Aztec, NM 87410  
Phone: (505) 334-6178 Fax: (505) 334-6170  
District IV  
1220 S. St. Francis Dr., Santa Fe, NM 87505  
Phone: (505) 476-3460 Fax: (505) 476-3462

FEB 02 2015

RECEIVED

State of New Mexico  
Energy, Minerals & Natural Resources Department  
OIL CONSERVATION DIVISION  
1220 South St. Francis Dr.  
Santa Fe, NM 87505

Form C-102  
Revised August 1, 2011  
Submit one copy to  
appropriate  
District Office

☒ AMENDED REPORT  
(UL corrected  
from 1 to A)

WELL LOCATION AND ACREAGE DEDICATION PLAT

1 API Number <b>30-025-42239</b>	2 Pool Code <b>22900</b>	3 Pool Name <b>Eunice; BLE-TU-DR, North</b>
4 Property Code <b>22503</b>	5 Property Name <b>NORTH EAST DRINKARD UNIT</b>	6 Well Number <b>#557</b>
7 OGRID No. <b>873</b>	8 Operator Name <b>APACHE CORPORATION</b>	9 Elevation <b>3434.52</b>

10 Surface Location

UL or lot no. <b>A</b>	Section <b>15</b>	Township <b>21 S</b>	Range <b>37 E</b>	Lot Idn	Feet from the <b>680</b>	North/South line <b>NORTH</b>	Feet from the <b>115</b>	East/West line <b>EAST</b>	County <b>LEA</b>
---------------------------	----------------------	-------------------------	----------------------	---------	-----------------------------	----------------------------------	-----------------------------	-------------------------------	----------------------

11 Bottom Hole Location If Different From Surface

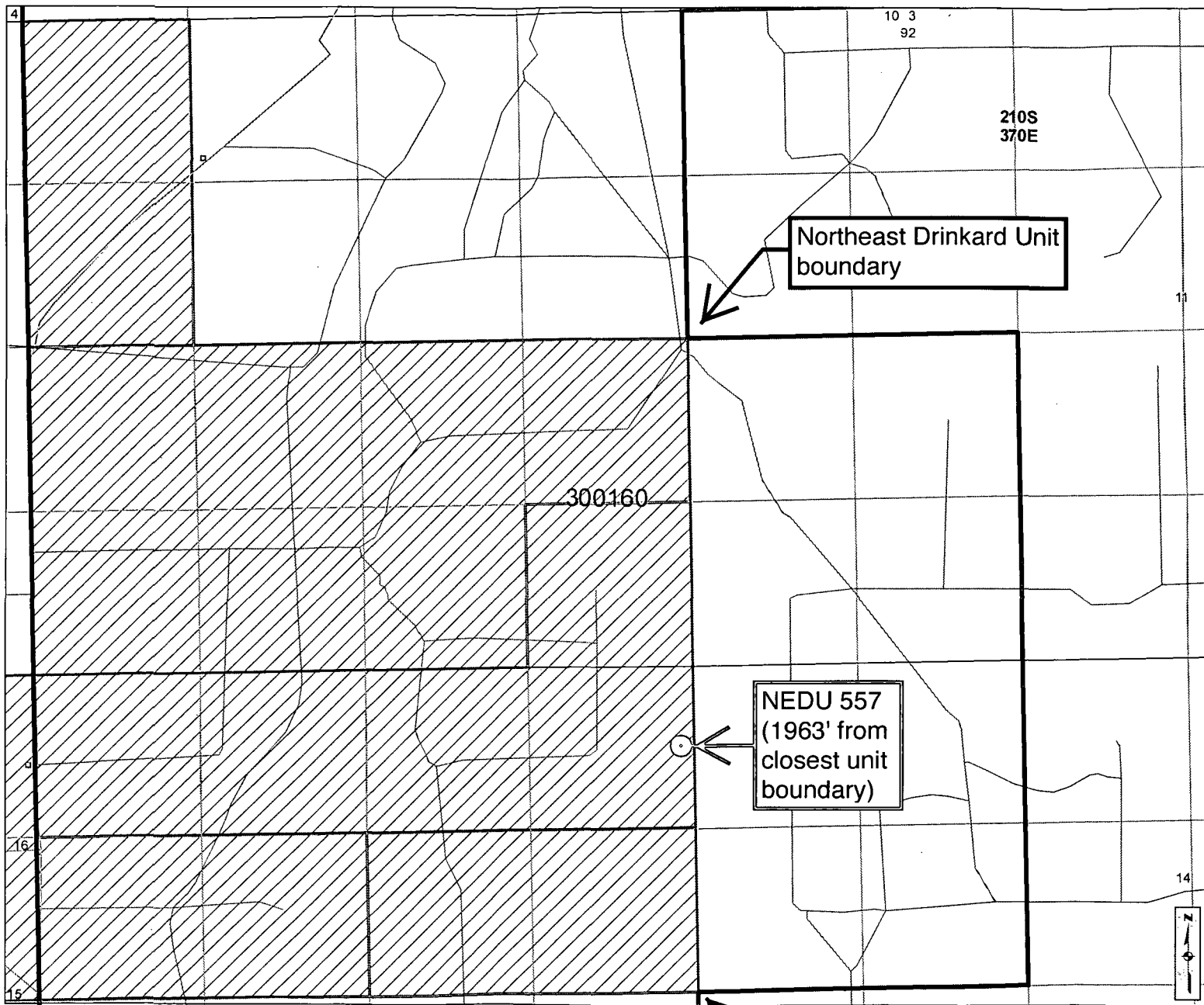
UL or lot no.	Section	Township	Range	Lot Idn	Feet from the	North/South line	Feet from the	East/West line	County
Dedicated Acres <b>40</b>	Joint or Infill	Consolidation Code	Order No.						

No allowable will be assigned to this completion until all interests have been consolidated or a non-standard unit has been approved by the division.

SECTION 15, TOWNSHIP 21 SOUTH, RANGE 37 EAST P.M.

<p>FOUND 1/2 INCH IRON ROD, CAPPED LAT: 32.485889 N LONG: -103.159758 W NUSPCE N: 542473.386 NUSPCE E: 862177.373 (N.A.D. 27) LAT: 32.486010 N LONG: -103.159269 W NUSPCE N: 542533.491 NUSPCE E: 903351.178 (N.A.D. 83)</p>		<p>FOUND SPIKE NAIL IN STONE MOUND LAT: 32.485920 N LONG: -103.141892 W NUSPCE N: 542543.152 NUSPCE E: 867432.319 (N.A.D. 27) LAT: 32.486040 N LONG: -103.142163 W NUSPCE N: 542602.945 NUSPCE E: 908536.367 (N.A.D. 83)</p>		<p>17 OPERATOR CERTIFICATION I hereby certify that the information contained herein is true and complete to the best of my knowledge and belief, and that this organization either owns a working interest or unleased mineral interest in the land including the proposed bottom hole location or has a right to drill this well at this location pursuant to a contract with an owner of such a mineral or working interest, or to a voluntary pooling agreement or a compulsory pooling order heretofore entered by the division.  Signature <i>Michelle Cooper</i> Date <i>1/29/15</i> Printed Name <i>Michelle Cooper</i> E-mail Address <i>michelle.cooper@apachecorp.com</i></p>	
<p>SURFACE LOCATION DD LAT: 32.484051 N DD LONG: -103.142064 W DMS LAT: 32°29'2.581" N DMS LONG: 103°08'31.435" W NUSPCE N: 541851.769 NUSPCE E: 867345.120 (N.A.D. 27) DD LAT: 32.484171 N DD LONG: -103.142534 W DMS LAT: 32°29'03.014" N DMS LONG: 103°08'33.123" W NUSPCE N: 541921.545 NUSPCE E: 908329.408 (N.A.D. 83)</p>		<p>18 SURVEYOR CERTIFICATION I hereby certify that the well location shown on this plat was plotted from field notes of actual surveys made by me or under my supervision, and that the same is true and correct to the best of my belief.  10-02-2014 Date of Survey Signature and Seal of Professional Surveyor <i>Jeffery E. Hudson</i> Certificate Number 20559</p>		<p>20559</p>	
<p>FOUND 3/8 INCH IRON ROD, CAPPED LAT: 32.471391 N LONG: -103.158051 W NUSPCE N: 537195.759 NUSPCE E: 862277.692 (N.A.D. 27) LAT: 32.471502 N LONG: -103.159131 W NUSPCE N: 537253.732 NUSPCE E: 903461.938 (N.A.D. 83)</p>		<p>FOUND 2" IRON PIPE, DISTURBED LAT: 32.471405 N LONG: -103.141684 W NUSPCE N: 537262.509 NUSPCE E: 867513.885 (N.A.D. 27) LAT: 32.471525 N LONG: -103.142154 W NUSPCE N: 537321.985 NUSPCE E: 908538.104 (N.A.D. 83)</p>			

FEB 04 2015



### Cartographic Features

- County Boundaries
- County Seats
- City, Town or Village
- SLO District Offices
- SLO District Boundary
- Hwy Mileposts
- Interstate
- US Hwy
- NM Hwy
- Local Road
- Continental Divide

### Federal Minerals Ownership

- All Minerals
- Coal Only
- Oil and Gas Only
- Oil, Gas and Coal Only
- Other Minerals

### State Trust Lands

- Surface Estate
- Subsurface Estate
- Surface and Subsurface Estate

### State Leases

- Oil and Gas Leases
- Agricultural Leases
- Commercial Leases
- Minerals Leases
- Not Available for Oil and Gas Leasing
- Oil and Gas Leasing Influenced by Restriction

### Oil and Gas Related Features

- Oil and Gas Unit Boundary
- Participating Areas in Units
- Geologic Regions
- Volcanic Vents
- NMOCD Order R-111-P
- Potash Enclave Outline

### NMOCD Oil and Gas Wells

- CO<sub>2</sub>
- Injection
- Gas
- Miscellaneous
- Oil
- Water
- Salt Water Disposal
- DA or PA

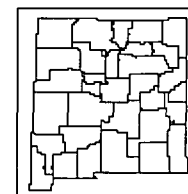
**New Mexico State Land Office**  
Oil, Gas and Minerals

0 0.05 0.1 0.2 0.3 0.4  
Miles

Universal Transverse Mercator Projection, Zone 13  
1983 North American Datum

The  
**Northeast Drinkard Unit**  
boundary

responsibility or liability for,  
or use of the information  
or any other data layer.  
Graphic Information Center  
logic@slo.state.nm.us



www.nmstatelands.org

Created On: 1/31/2015 12:58:13 PM