

District I
1625 N. French Dr., Hobbs, NM 88240
Phone: (575) 393-6161 Fax: (575) 393-0720
District II
811 S. First St., Artesia, NM 88210
Phone: (575) 748-1283 Fax: (575) 748-9720
District III
1000 Rio Brazos Road, Aztec, NM 87410
Phone: (505) 334-6178 Fax: (505) 334-6170
District IV
1220 S. St. Francis Dr., Santa Fe, NM 87505
Phone: (505) 476-3460 Fax: (505) 476-3462

State of New Mexico
Energy, Minerals & Natural Resources Department
OIL CONSERVATION DIVISION
1220 South St. Francis Dr.
Santa Fe, NM 87505

Form C-102
Revised August 1, 2011
Submit one copy to appropriate
District Office

☐ AMENDED REPORT

RECEIVED

WELL LOCATION AND ACREAGE DEDICATION PLAT

1 API Number 30-025-42420		2 Pool Code 96193		3 Pool Name BRIMINSTOOL; DELAWARE	
4 Property Code 30884		5 Property Name THISTLE UNIT			6 Well Number 23H
7 GRID NO. 6137		8 Operator Name DEVON ENERGY PRODUCTION COMPANY, L. P.			9 Elevation 3632'
10 Surface Location					
UL or lot no. M	Section 34	Township 23S	Range 33E	Lot Idn	Feet from the 89
				North/South line SOUTH	Feet From the 1200
				East/West line WEST	County LEA
11 Bottom Hole Location If Different From Surface					
UL or lot no. D	Section 34	Township 23S	Range 33E	Lot Idn	Feet from the 330
				North/South line NORTH	Feet from the 1200
				East/West line WEST	County LEA
12 Dedicated Acres 160	13 Joint or Infill	14 Consolidation Code		15 Order No.	

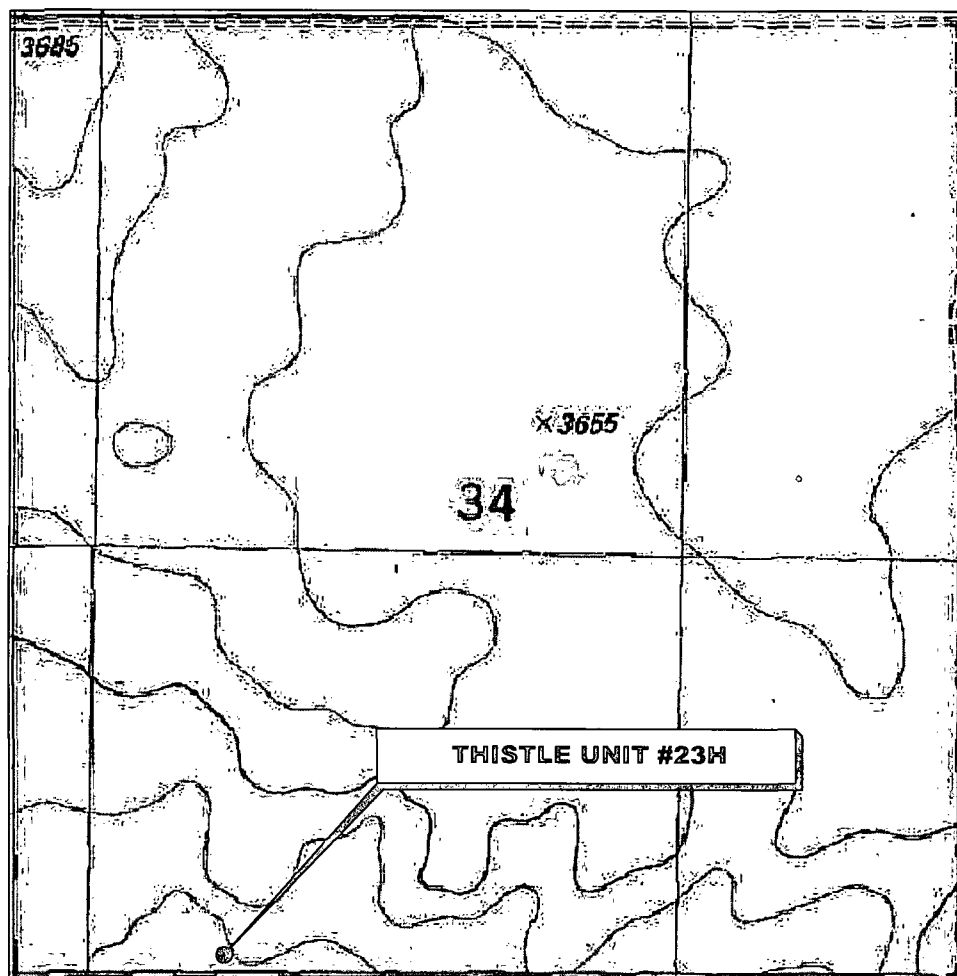
No allowable will be assigned to this completion until all interest have been consolidated or a non-standard unit has been approved by the division.

		<p>17 OPERATOR CERTIFICATION</p> <p>I hereby certify that the information contained herein is true and complete to the best of my knowledge and belief, and that this organization either owns a working interest or unleased mineral interest in the land including the proposed bottom hole location or has a right to drill this well at this location pursuant to a contract with an owner of such a mineral or working interest, or to a voluntary pooling agreement or a compulsory pooling order heretofore entered by the division.</p> <p>Signature: <i>[Signature]</i> Date: 2/3/2015 David H. Cook Regulatory Specialist Printed Name david.cook@dmv.com E-mail Address</p>
<p>18 SURVEYOR CERTIFICATION</p> <p>I hereby certify that the well location shown on this plat was plotted from field notes of actual surveys made by me or under my supervision, and that the same is true and correct to the best of my belief.</p> <p>12-1-14 Date of Survey Signature and Seal of Professional Surveyor: <i>[Signature]</i> 20451 Certificate Number</p>		

RRC - Firm No.: TX 10193838 NM 4655451 - Job No.: LS140509

FEB 05 2015

LOCATION VERIFICATION MAP



*SECTION 34, TWP. 23 SOUTH, RGE. 33 EAST,
N. M. P. M., LEA CO., NEW MEXICO*

OPERATOR: Devon Energy
Production Company, L. P.
LEASE: Thistle Unit
WELL NO.: #23H
ELEVATION: 3632'

LOCATION: 89' FSL & 1200' FWL
CONTOUR INTERVAL: 10'
USGS TOPO. SOURCE MAP:
Tip Top Wells, NM (1984)

Firm No.: TX 10193838 NM 4655451

Copyright 2014 - All Rights Reserved

NO.	REVISION	DATE
JOB NO.:	LS140509	
DWG. NO.:	140509LVM	

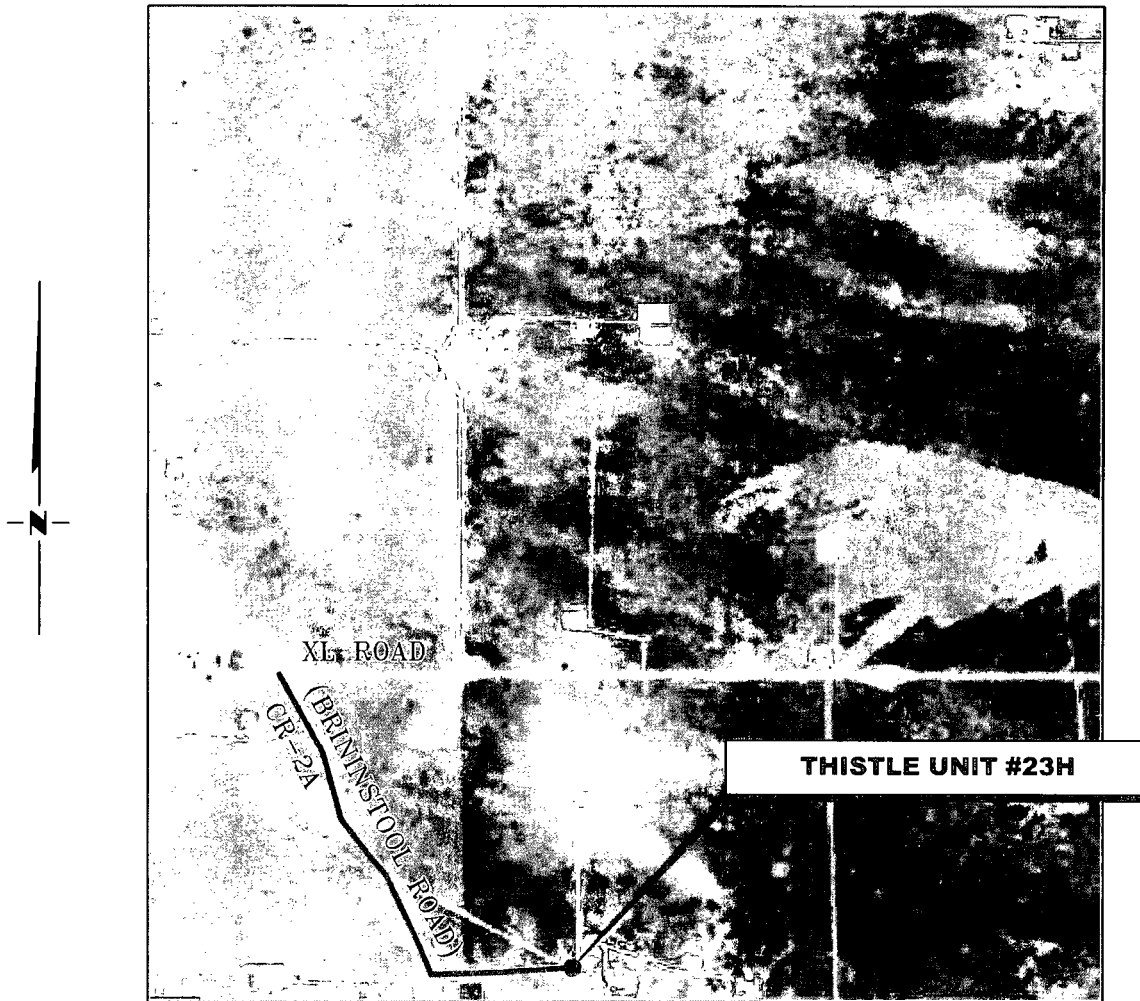
RRC

308 W. BROADWAY ST., HOBBS, NM 88240 (575) 964-8200

SCALE: 1"=1000'
DATE: 12-1-14
SURVEYED BY: IE/DH
DRAWN BY: JC
APPROVED BY: REB
SHEET : 1 OF 5

VICINITY MAP

NOT TO SCALE



**SECTION 34, TWP. 23 SOUTH, RGE. 33 EAST,
N. M. P. M., LEA CO., NEW MEXICO**

OPERATOR: Devon Energy
Production Company, L. P.

LOCATION: 89' FSL & 1200' FWL
ELEVATION: 3632'

LEASE: Thistle Unit
WELL NO.: #23H

Firm No.: TX 10193838 NM 4655451

Copyright 2014 - All Rights Reserved

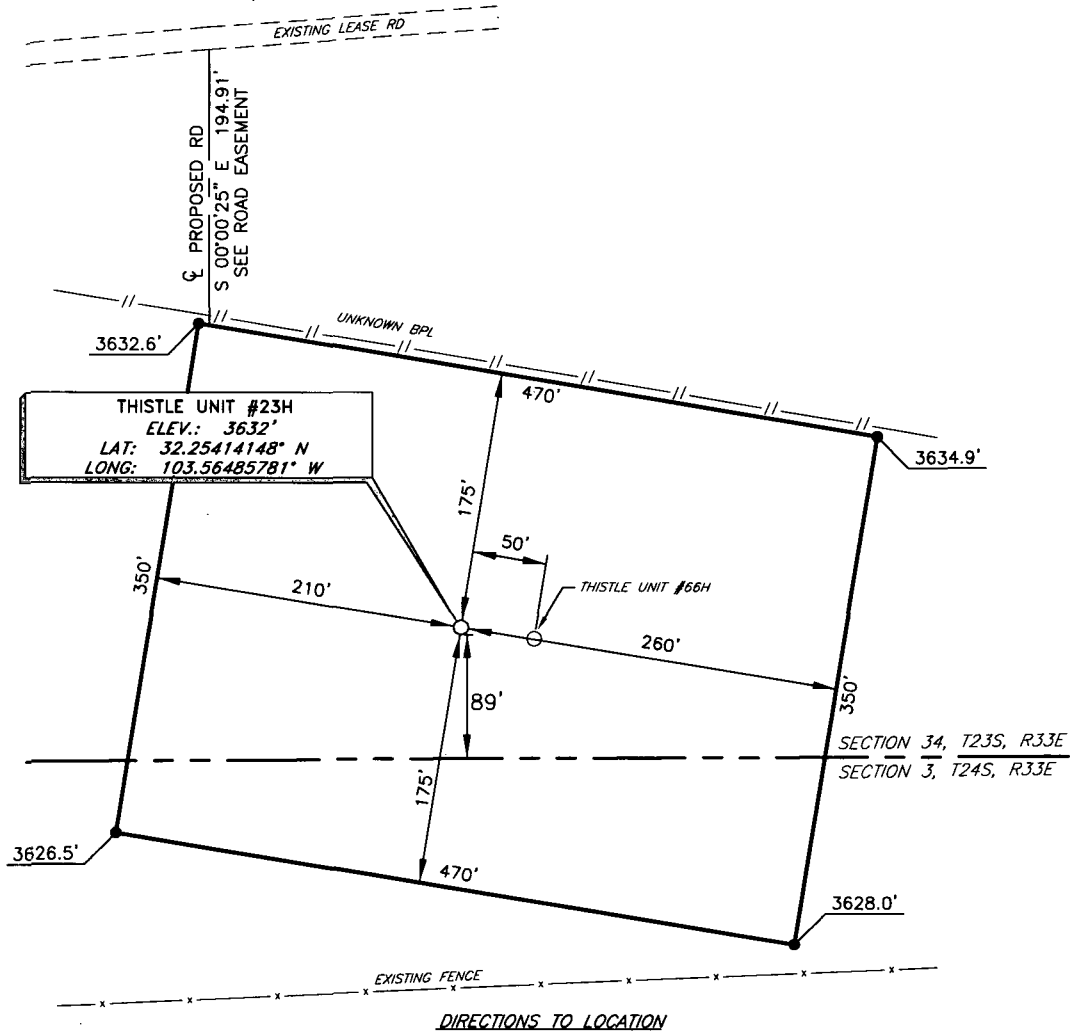
NO.	REVISION	DATE
JOB NO.: LS140509		
DWG. NO.: 140509VM		

RRC

308 W. BROADWAY ST., HOBBS, NM 88240 (575) 964-8200

SCALE: NTS
DATE: 12-1-14
SURVEYED BY: IE/DH
DRAWN BY: JC
APPROVED BY: REB
SHEET : 2 OF 5

DEVON ENERGY PRODUCTION COMPANY, L. P.
 THISTLE UNIT #23H
 (89' FSL & 1200' FWL)
 SECTION 34, T23S, R33E
 N. M. P. M., LEA CO., NEW MEXICO



DIRECTIONS TO LOCATION

From the intersection of XL Road and CR 2-A (Brininstool Rd);
 Go Southeast on CR 2-A (Brininstool Road) approx. 1.0 miles to a lease
 road turn left;
 Go east approx. 0.3 miles to a proposed road turn right on proposed road;
 Go South approx. 195 feet into the Northwest pad corner of Location.



Firm No.: TX 10193838 NM 4655451

Copyright 2014 - All Rights Reserved

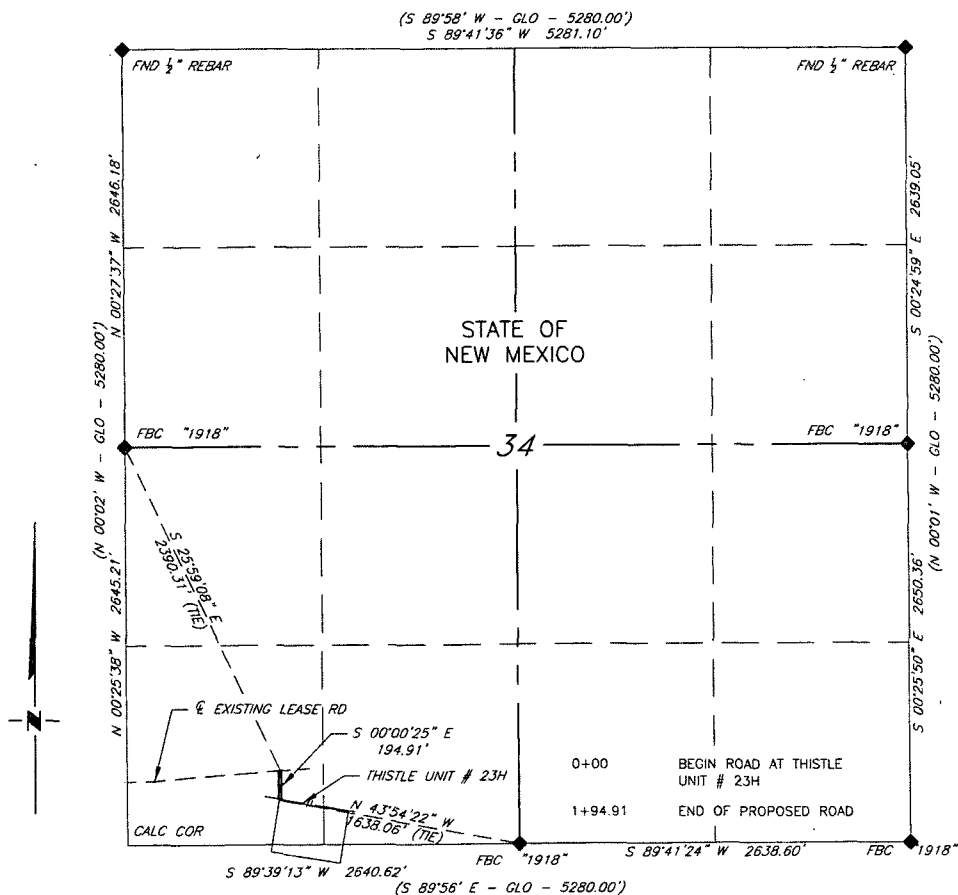
NO.	REVISION	DATE
JOB NO.:	LS140509	
DWG. NO.:	140509PAD	

RRC

308 W. BROADWAY ST., HOBBS, NM 88240 (575) 964-8200

SCALE: 1" = 100'
DATE: 12-1-14
SURVEYED BY: IE/DH
DRAWN BY: JC
APPROVED BY: REB
SHEET : 3 OF 5

DEVON ENERGY PRODUCTION COMPANY, LP
PROPOSED ROAD EASEMENT FROM
THE THISTLE UNIT #23H TO
AN EXISTING LEASE ROAD
SECTION 34, T23S, R33E
N. M. P. M., LEA CO., NEW MEXICO



SCALE: 1" = 1000'
0 500 1000

BEARINGS ARE GRID NAD 83
NM EAST
DISTANCES ARE HORIZ. GROUND.

LEGEND

- () RECORD DATA - GLO
- ◆ FOUND MONUMENT AS NOTED
- PROPOSED ROAD
- OVERHEAD UTILITIES
- EXISTING BPL

I, Richard E Brooks, a New Mexico Professional Surveyor, do hereby certify that the plat shown hereon accurately depicts the conditions on the ground at the time of the survey; that all work was done under my direct supervision and meets the State of New Mexico minimum standards for land surveying to the best of my knowledge.

[Signature]
Richard E Brooks NM PS 20451



Firm No.: TX 10193838 NM 4655451

Copyright 2014 - All Rights Reserved

NO.	REVISION	DATE
JOB NO.:	LS140509	
DWG. NO.:	140509RD1	

RRC

308 W. BROADWAY ST., HOBBS, NM 88240 (575) 964-8200

SCALE: 1" = 1000'
DATE: 12-1-14
SURVEYED BY: IE/DH
DRAWN BY: LNY
APPROVED BY: REB
SHEET: 4 OF 5