

DISTRICT I
1825 N. French Dr., Hobbs, NM 88240
Phone (575) 393-8181 Fax: (575) 393-0720

DISTRICT II
1301 W. Grand Avenue, Artesia, NM 88210
Phone (575) 748-1283 Fax: (575) 748-0720

DISTRICT III
1000 Rio Brazos Rd., Aztec, NM 87410
Phone (505) 334-8176 Fax: (505) 334-8170

DISTRICT IV
1220 S. St. Francis Dr., Santa Fe, NM 87505
Phone (505) 476-3460 Fax: (505) 476-3462

State of New Mexico
Energy, Minerals and Natural Resources Department

OIL CONSERVATION DIVISION
1220 South St. Francis Dr.
Santa Fe, New Mexico 87505

HOBBSDO
FEB 05 2015

Form C-102
Revised August 1, 2011
Submit one copy to appropriate
District Office

☐ AMENDED REPORT

WELL LOCATION AND ACREAGE DEDICATION PLAT

API Number 30-025-42423	Pool Code 28430	Pool Name Grama Ridge, Bone Springs
Property Code 314181	Property Name OPTIMIZER BVB STATE	Well Number 1H
OGRID No. 025575	Operator Name YATES PETROLEUM CORP.	Elevation 3684'

Surface Location

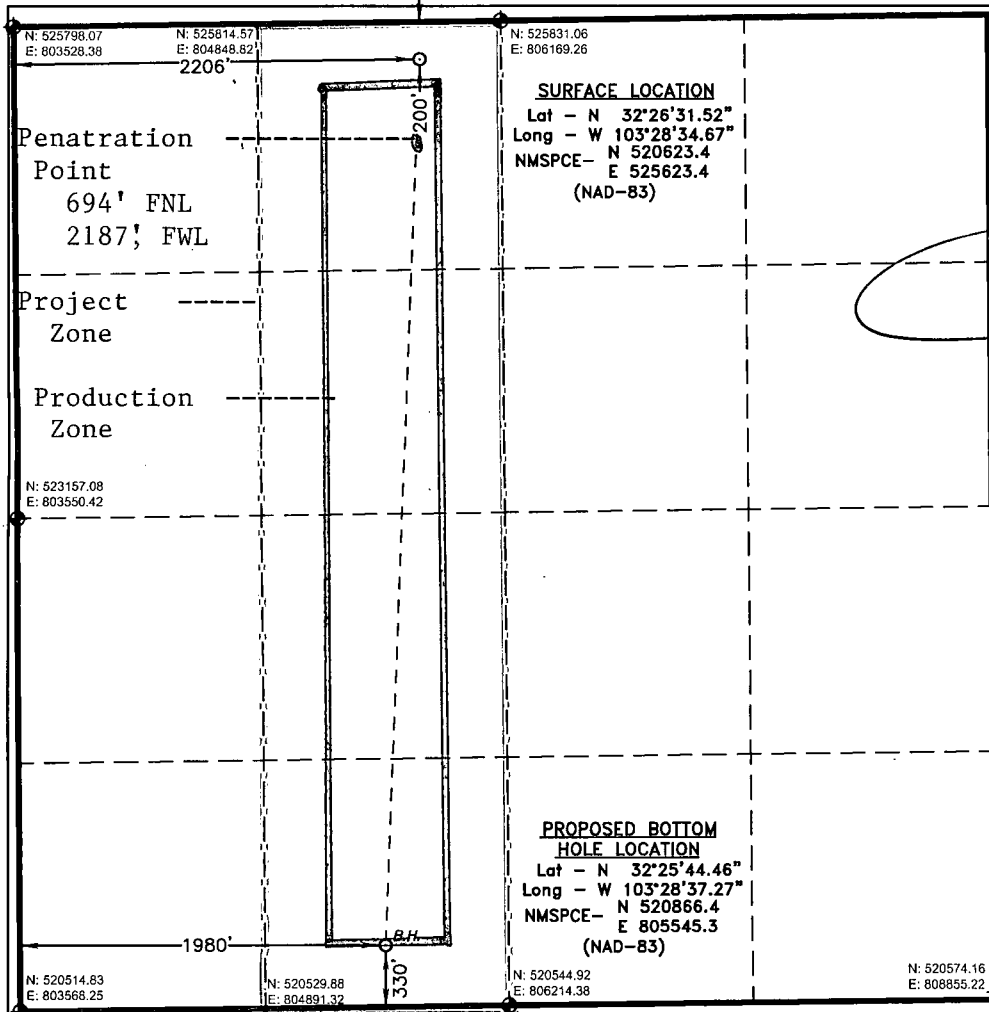
UL or lot No.	Section	Township	Range	Lot Idn	Feet from the	North/South line	Feet from the	East/West line	County
C	33	21 S	34 E		200	NORTH	2206	WEST	LEA

Bottom Hole Location If Different From Surface

UL or lot No.	Section	Township	Range	Lot Idn	Feet from the	North/South line	Feet from the	East/West line	County
N	33	21 S	34 E		330	SOUTH	1980	WEST	LEA

Dedicated Acres	Joint or Infill	Consolidation Code	Order No.
160			

NO ALLOWABLE WILL BE ASSIGNED TO THIS COMPLETION UNTIL ALL INTERESTS HAVE BEEN CONSOLIDATED
OR A NON-STANDARD UNIT HAS BEEN APPROVED BY THE DIVISION



OPERATOR CERTIFICATION

I hereby certify that the information contained herein is true and complete to the best of my knowledge and belief, and that this organization either owns a working interest or unleased mineral interest in the land including the proposed bottom hole location or has a right to drill this well at this location pursuant to a contract with an owner of such a mineral or working interest, or to a voluntary pooling agreement or a compulsory pooling order heretofore entered by the division.

Signature

Date

Rene P. Bela

Printed Name

rbela@yatespetroleum.com

Email Address

SURVEYOR CERTIFICATION

I hereby certify that the well location shown on this plat was plotted from field notes of actual surveys made by me or under my supervision, and that the same is true and correct to the best of my belief.

January 10, 2015

Date Surveyed

Signature of Professional Surveyor

Certificate No. Gary L. Jones 7977

0' 500' 1000' 1500'

SCALE: 1" = 1000'

WO Num.: 31417

FEB 05 2015
6