

District I  
1625 N. French Dr., Hobbs, NM 88240  
Phone: (575) 393-6161 Fax: (575) 393-0720  
District II  
811 S. First St., Artesia, NM 88210  
Phone: (575) 748-1283 Fax: (575) 748-9720  
District III  
1000 Rio Brazos Road, Aztec, NM 87410  
Phone: (505) 334-6178 Fax: (505) 334-6170  
District IV  
1220 S. St. Francis Dr., Santa Fe, NM 87505  
Phone: (505) 476-3460 Fax: (505) 476-3462

State of New Mexico  
Energy, Minerals & Natural Resources Department  
**OIL CONSERVATION DIVISION**  
1220 South St. Francis Dr.  
Santa Fe, NM 87505

Form C-102  
Revised August 1, 2011  
Submit one copy to appropriate  
District Office

☐ AMENDED REPORT

**WELL LOCATION AND ACREAGE DEDICATION PLAT**

<sup>1</sup> API Number <b>30-025-42443</b>	<sup>2</sup> Pool Code <b>97955</b>	<sup>3</sup> Pool Name <b>WC-025 G 06, 9263319P; BONE SPRING</b>
<sup>4</sup> Property Code <b>71494</b>	<sup>5</sup> Property Name <b>SALADO DRAW 29 26 33 FED COM</b>	<sup>6</sup> Well Number <b>8H</b>
<sup>7</sup> OGRID No. <b>4323</b>	<sup>8</sup> Operator Name <b>CHEVRON U.S.A. INC.</b>	<sup>9</sup> Elevation <b>3246'</b>

**10. Surface Location**

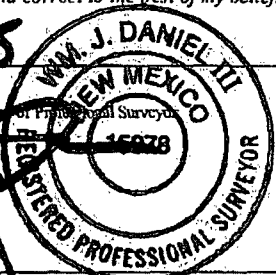
UL or lot no.	Section	Township	Range	Lot Idn	Feet from the	North/South line	Feet from the	East/West line	County
B	29	26 SOUTH	33 EAST, N.M.P.M.		136'	NORTH	1382'	EAST	LEA

**11. Bottom Hole Location If Different From Surface**

UL or lot no.	Section	Township	Range	Lot Idn	Feet from the	North/South line	Feet from the	East/West line	County
H	32	26 SOUTH	33 EAST, N.M.P.M.		280'	SOUTH	355'	EAST	LEA

<sup>12</sup> Dedicated Acres <b>237.44</b>	<sup>13</sup> Joint or Infill	<sup>14</sup> Consolidation Code	<sup>15</sup> Order No.
--	-------------------------------	----------------------------------	-------------------------

No allowable will be assigned to this completion until all interests have been consolidated or a non-standard unit has been approved by the division.

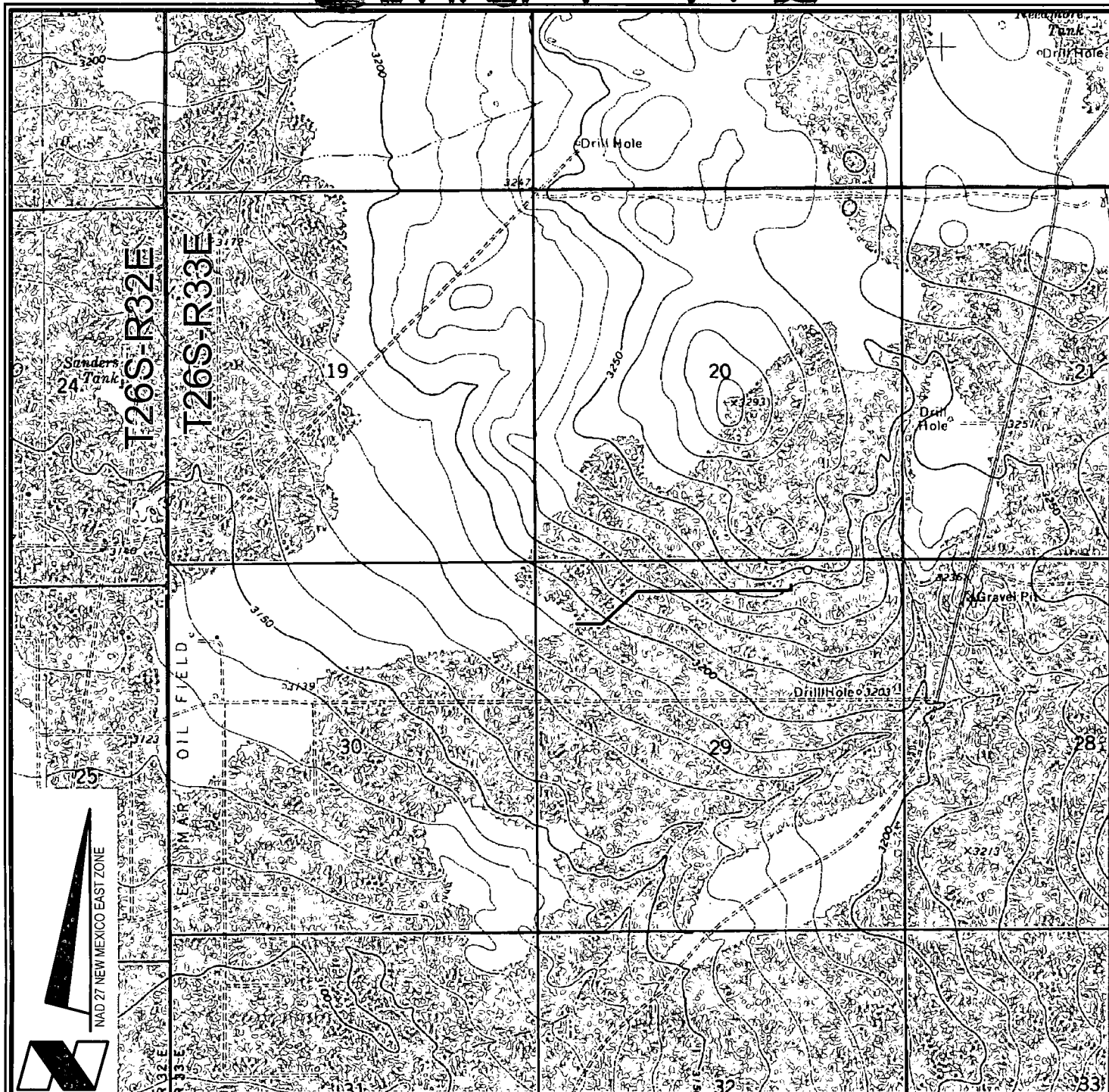
<p><b>SALADO DRAW 29 26 33 FED COM</b> <b>NO. 8H WELL</b></p> <p>X= 730,460 NAD 27 Y= 372,254 LAT. 32.021261 LONG. 103.589737</p> <p>X= 771,648 NAD83 Y= 372,311 LAT. 32.021386 LONG. 103.590204</p> <p>ELEVATION = 3246' NAVD 83</p>	<p>Proposed First Take Point 330' FNL, 355' FEL</p> <p>136'</p> <p>1382'</p> <p>S 79°42'47"E 1,045.61'</p> <p>29</p> <p>32</p> <p>355'</p> <p>280'</p> <p>Proposed Last Take Point 330' FSL, 355' FEL</p> <p>LEA COUNTY, NM LOVING COUNTY, TX</p>	<p><b>11. OPERATOR CERTIFICATION</b> I hereby certify that the information contained herein is true and complete to the best of my knowledge and belief, and that this organization either owns a working interest or unleased mineral interest in the land including the proposed bottom hole location or has a right to drill this well at this location pursuant to a contract with an owner of such a mineral or working interest, or to a voluntary pooling agreement or a compulsory pooling order heretofore entered by the division.</p> <p><i>Cindy Herrera-Murillo</i> Signature Date <b>2-12-15</b></p> <p>Cindy Herrera-Murillo Printed Name cherreramurillo@chevron.com E-mail Address</p> <p><b>12. SURVEYOR CERTIFICATION</b> I hereby certify that the well location shown on this plat was plotted from field notes of actual surveys made by me or under my supervision, and that the same is true and correct to the best of my belief.</p> <p><b>2-12-15</b> Date of Survey Signature and Seal of Registered Professional Surveyor  Certificate Number <b>#15078</b></p>
---	---	---

**CORNER COORDINATES TABLE (NAD 27)**

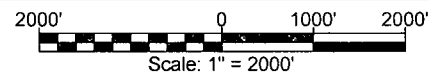
A - Y=372382.09, X=729197.59  
B - Y=372390.91, X=730519.68  
C - Y=372399.73, X=731841.78  
D - Y=371062.70, X=729207.78  
E - Y=371072.13, X=730529.72  
F - Y=367115.79, X=730559.81  
G - Y=367127.04, X=731881.26  
H - Y=364563.17, X=730579.96  
I - Y=364572.35, X=731900.79

FEB 16 2015

# Exhibit A-2



VICINITY MAP



## CHEVRON U.S.A. INC.

SALADO DRAW 29 26 33 FED COM NO. 8H WELL  
 LOCATED 136' FNL AND 3906' FWL  
 SECTION 29, T26S-R33E  
 LEA COUNTY, NEW MEXICO



Lafayette New Orleans Houston  
 135 Regency Sq. Lafayette, LA 70508  
 Ph. 337-237-2200 Fax. 337-232-3299  
[www.fenstermaker.com](http://www.fenstermaker.com)

DRAWN BY: BMO

REVISED:

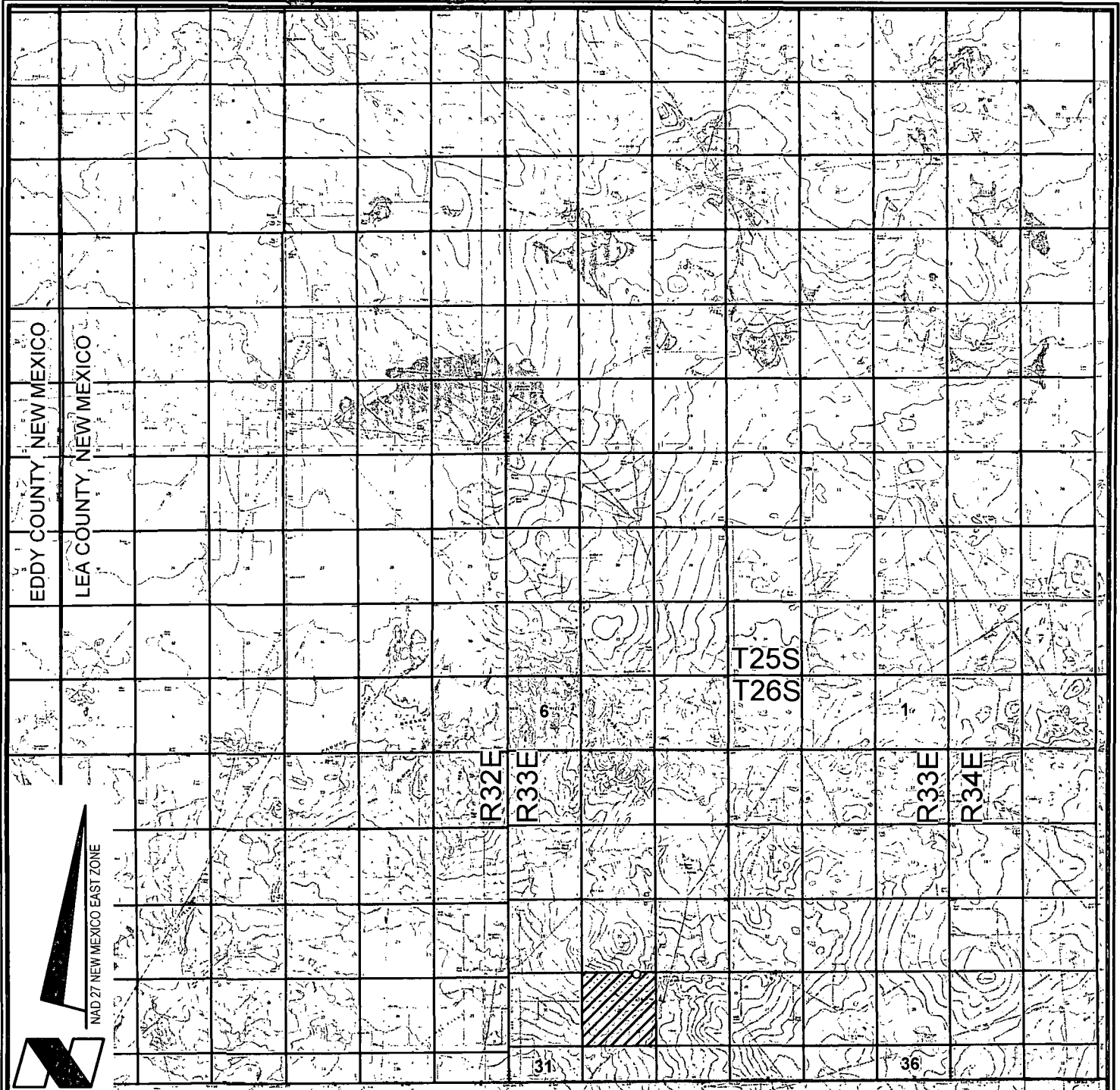
DATE: MAY 12, 2014

PROJ. MGR.: VHV

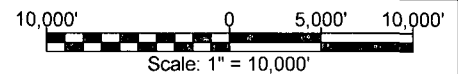
SHEET 1 OF 3 SHEETS

FILENAME: T:\2014\2144786\DWG\Salado Draw 29 26 33 Fed Com 8H\_APD.dwg

# Exhibit A-3



VICINITY MAP



**CHEVRON U.S.A. INC.**

SALADO DRAW 29 26 33 FED COM NO. 8H WELL

LOCATED 136' FNL AND 3906' FWL

SECTION 29, T26S-R33E

LEA COUNTY, NEW MEXICO



Lafayette New Orleans Houston  
135 Regency Sq. Lafayette, LA 70508  
Ph. 337-237-2200 Fax. 337-232-3299  
[www.fenstermaker.com](http://www.fenstermaker.com)

DRAWN BY: BMO

REVISED:

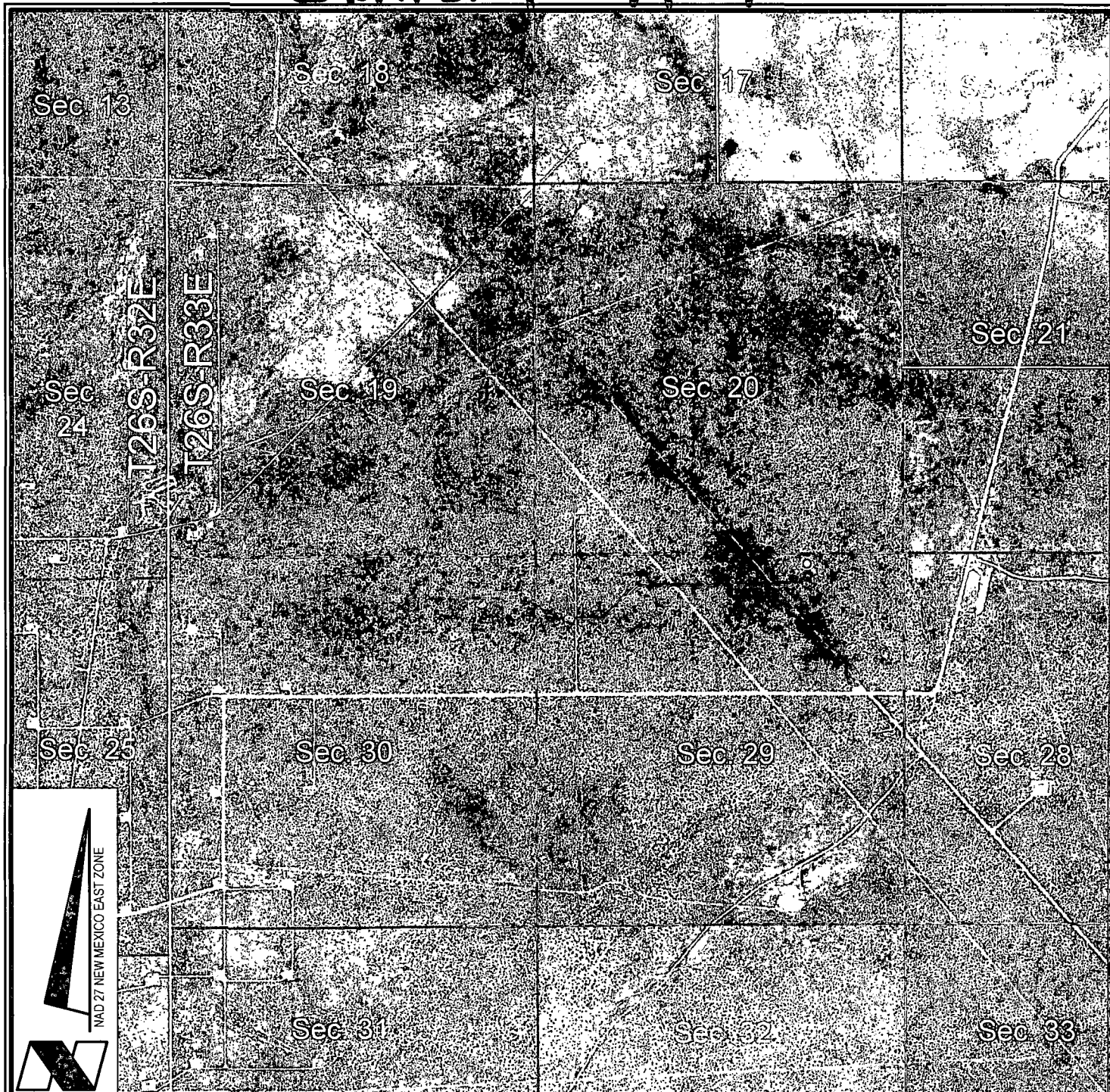
DATE: MAY 12, 2014

PROJ. MGR.: VHV

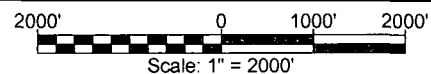
SHEET 2 OF 3 SHEETS



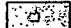
FILENAME: T:\2014\2144786\DWG\Salado Draw 29 26 33 Fed Com 8H\_APD.dwg

# Exhibit A-4



VICINITY MAP



-  = FEDERAL LAND
-  = FEE LAND
-  = STATE LAND

**CHEVRON U.S.A. INC.**  
 SALADO DRAW 29 26 33 FED COM NO. 8H WELL  
 LOCATED 136' FNL AND 3906' FWL  
 SECTION 29, T26S-R33E  
 LEA COUNTY, NEW MEXICO



Lafayette New Orleans Houston  
 135 Regency Sq. Lafayette, LA 70508  
 Ph. 337-237-2200 Fax. 337-232-3299  
[www.fenstermaker.com](http://www.fenstermaker.com)

DRAWN BY: BMO

REVISED:

DATE: MAY 12, 2014

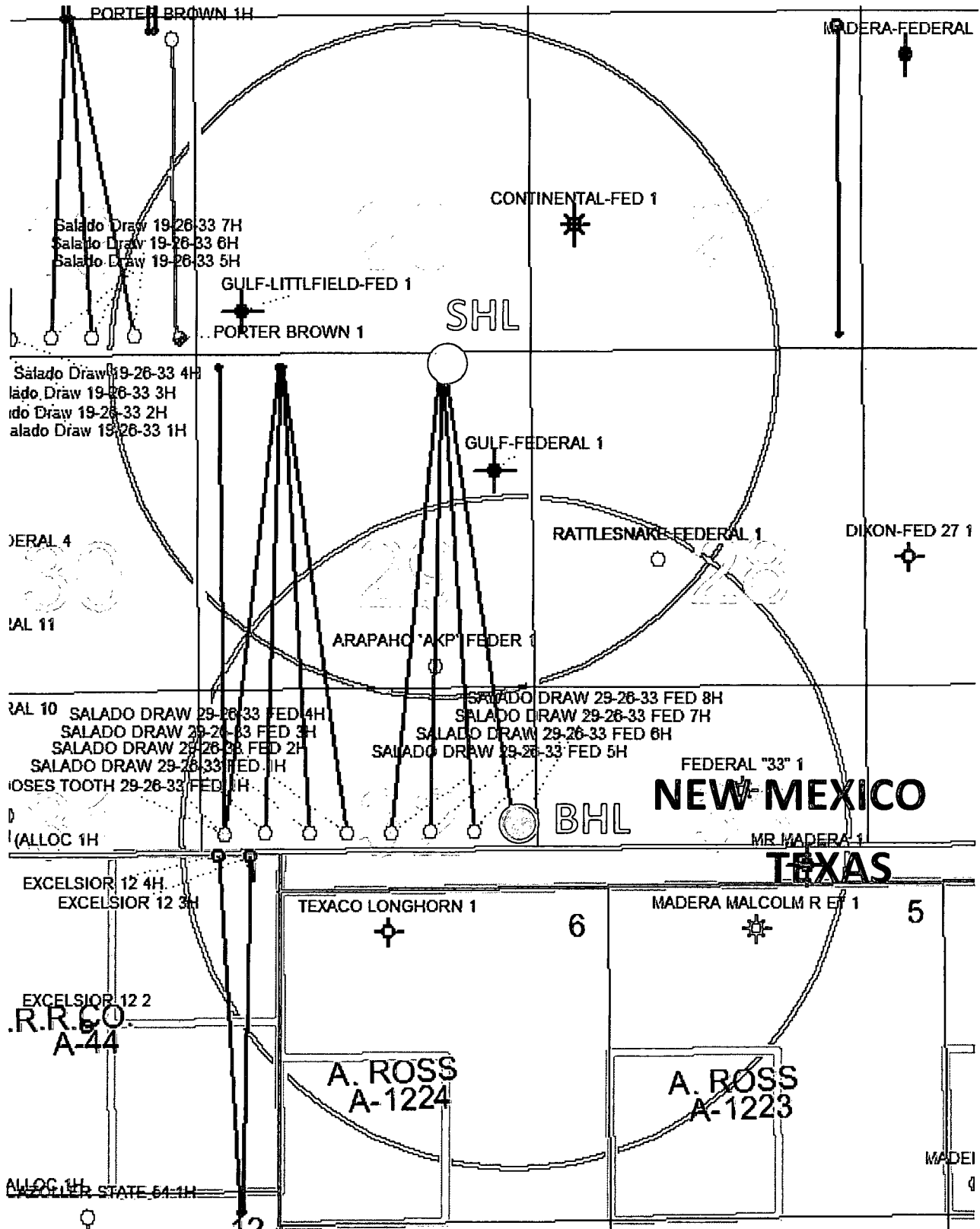
PROJ. MGR.: VHV

SHEET 3 OF 3 SHEETS

FILENAME: T:\2014\2144786\DWG\Salado Draw 29 26 33 Fed Com 8H\_APD.dwg

# Exhibit B

SALADO DRAW 29-26-33 FED 8H  
SURFACE AND BOTTOM HOLE LOCATION  
TWN 26S RNG 33E SEC 29 & 32  
1 MILE RADIUS



**NOTE:**

Please be advised, that while reasonable efforts are made to locate and verify pipelines and anomalies using our standard pipeline locating equipment, it is impossible to be 100 % effective. As such, we advise using caution when performing work as there is a possibility that pipelines and other hazards, such as fiber optic cables, PVC pipelines, etc. may exist undetected on site.

**NOTE:**

Many states maintain information centers that establish links between those who dig (excavators) and those who own and operate underground facilities (operators). It is advisable and in most states, law, for the contractor to contact the center for assistance in locating and marking underground utilities. For guidance: New Mexico One Call - [www.nmonecall.org](http://www.nmonecall.org)

**DISCLAIMER:** At this time, C.H. Fenstermaker & Associates, LLC has not performed nor was asked to perform any type of engineering, hydrological modeling, flood plain, or "No Rise" certification analyses, including but not limited to determining whether the project will impact flood hazards in connection with federal/FEMA, state, and/or local laws, ordinances and regulations. Accordingly, Fenstermaker makes no warranty or representation of any kind as to the foregoing issues, and persons or entities using this information shall do so at their own risk.

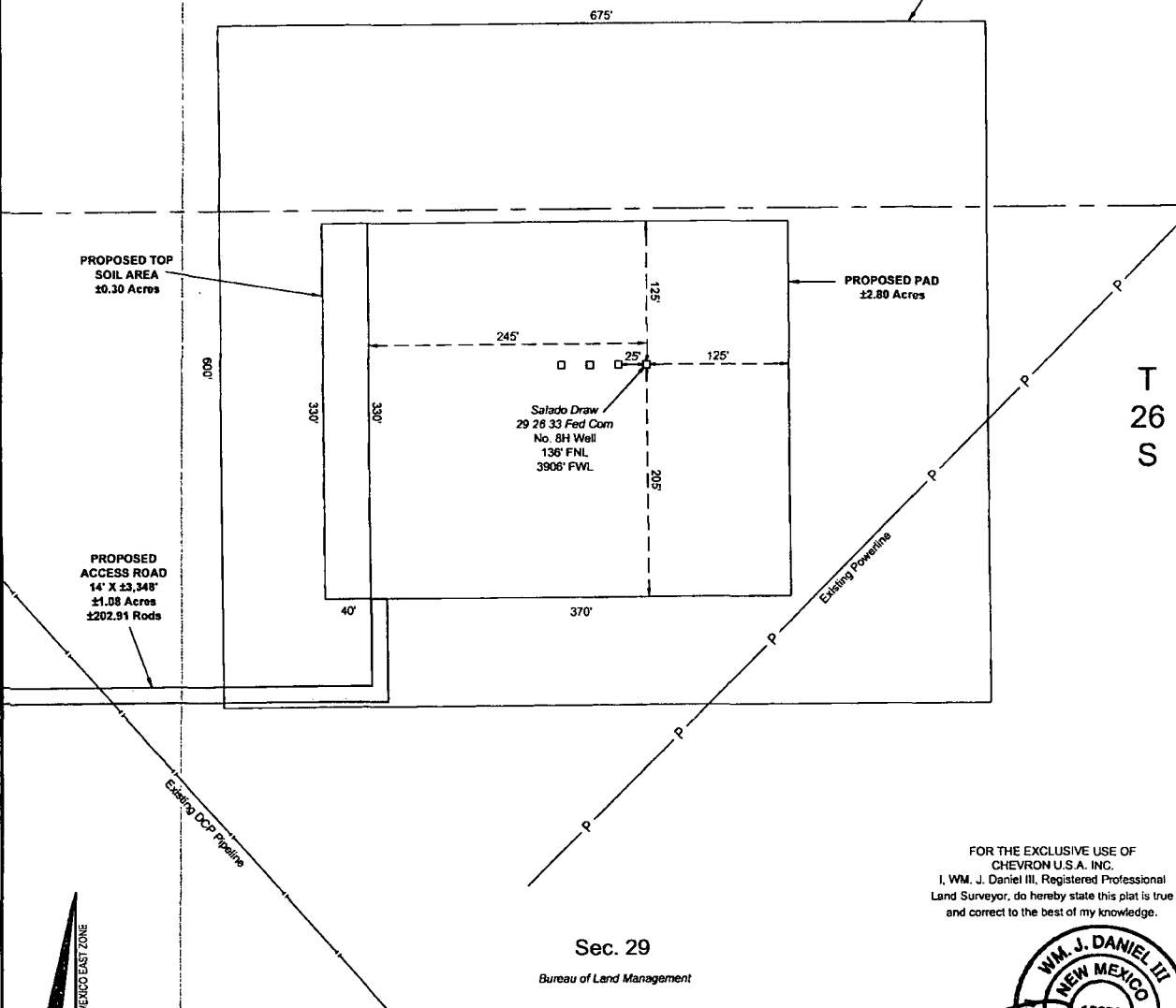
NW ARCH. AREA CORNER	NE ARCH. AREA CORNER	SE ARCH. AREA CORNER	SW ARCH. AREA CORNER	SALADO DRAW 29 26 33 FED COM 8H WELL
X= 730,084 NAD 27 Y= 372,552	X= 730,758 NAD 27 Y= 372,556	X= 730,763 NAD 27 Y= 371,956	X= 730,087 NAD 27 Y= 371,952	X= 730,450 NAD 27 Y= 372,254
ELEVATION +3265' NAVD 88	ELEVATION +3253' NAVD 88	ELEVATION +3239' NAVD 88	ELEVATION +3240' NAVD 88	LAT. 32.021261 LONG. 103.589737
NW PAD CORNER/NE TOP SOIL AREA CORNER	NE PAD CORNER	SE PAD CORNER	SW PAD CORNER/SE TOP SOIL AREA CORNER	X= 771,548 NAD83 Y= 372,311
X= 730,215 NAD 27 Y= 372,377	X= 730,585 NAD 27 Y= 372,380	X= 730,587 NAD 27 Y= 372,050	X= 730,217 NAD 27 Y= 372,047	LAT. 32.021386 LONG. 103.590204
ELEVATION +3256' NAVD 88	ELEVATION +3254' NAVD 88	ELEVATION +3247' NAVD 88	ELEVATION +3241' NAVD 88	ELEVATION +3245' NAVD 88
		NW TOP SOIL AREA CORNER	SW TOP SOIL AREA CORNER	
		X= 730,175 NAD 27 Y= 372,377	X= 730,177 NAD 27 Y= 372,047	
		ELEVATION +3258' NAVD 88	ELEVATION +3242' NAVD 88	

**R 33 E**

**Sec. 20**

Bureau of Land Management

**PROPOSED  
ARCHAEOLOGICAL  
AREA  
±6.50 Acres**

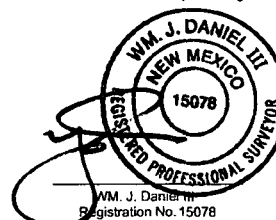


**T  
26  
S**

**Sec. 29**

Bureau of Land Management

FOR THE EXCLUSIVE USE OF  
CHEVRON U.S.A. INC.  
I, WM. J. DANIEL III, Registered Professional  
Land Surveyor, do hereby state this plat is true  
and correct to the best of my knowledge.



LEGEND	
—	Section Line
-P-	Existing Powerline
-P-	Existing Pipeline

**CHEVRON U.S.A. INC.**  
PROPOSED PAD & ACCESS ROAD  
SALADO DRAW 29 26 33 FED COM 8H WELL  
SECTION 29, T26S-R33E  
LEA COUNTY, NEW MEXICO

Page 1 of 2



135 Regency Sq. Lafayette, LA 70508  
Ph. 337-237-2200 Fax. 337-232-3299  
[www.fenstermaker.com](http://www.fenstermaker.com)

Scale: 1"=100'  
100' 0 50' 100'

DRAWN BY: BMO		REVISIONS	
PROJ. MGR: VHV	No.	DATE:	REVISED BY:
DATE: MAY 12, 2014	No.	DATE:	REVISED BY:
FILENAME: T:\2014\2144786\DWG\Salado Draw 29 26 33 Fed Com 8H_SUP.dwg			

R 33 E

Sec. 20

Bureau of Land Management

SEE  
PAGE 1

Existing Lease Road

Find. 2"  
Iron Pipe  
w/Cap

Existing  
Frac Pond

Proposed  
Frac Pond  
Expansion

PROPOSED  
ACCESS ROAD  
14' X 23,348'  
±1.08 Acres  
±202.91 Rods

Sec. 29

Bureau of Land Management

T  
26  
S

FOR THE EXCLUSIVE USE OF  
CHEVRON U.S.A. INC.

I, WM. J. Daniel III, Registered Professional  
Land Surveyor, do hereby state this plat is true  
and correct to the best of my knowledge.



WM. J. Daniel III  
Registration No. 15078

**NOTE:**

Please be advised, that while reasonable efforts are made to locate and verify pipelines and anomalies using our standard pipeline locating equipment, it is impossible to be 100 % effective. As such, we advise using caution when performing work as there is a possibility that pipelines and other hazards, such as fiber optic cables, PVC pipelines, etc. may exist undetected on site.

**NOTE:**

Many states maintain information centers that establish links between those who dig (excavators) and those who own and operate underground facilities (operators). It is advisable and in most states, law, for the contractor to contact the center for assistance in locating and marking underground utilities. For guidance: New Mexico One Call - [www.nmonecall.org](http://www.nmonecall.org)

**DISCLAIMER:** At this time, C.H. Fenstermaker & Associates, LLC has not performed nor was asked to perform any type of engineering, hydrological modeling, flood plain, or "No Rise" certification analyses, including but not limited to determining whether the project will impact flood hazards in connection with federal/FEMA, state, and/or local laws, ordinances and regulations. Accordingly, Fenstermaker makes no warranty or representation of any kind as to the foregoing issues, and persons or entities using this information shall do so at their own risk.

**LEGEND**

—	Section Line
—X—	Fence Line
●	Found Occupation
—P—	Existing Powerline
—	Existing Pipeline

**SURFACE USE PLAT**

**CHEVRON U.S.A. INC.**

PROPOSED PAD & ACCESS ROAD

SALADO DRAW 29 26 33 FED COM 8H WELL

SECTION 29, T26S-R33E

LEA COUNTY, NEW MEXICO

Page 2 of 2



135 Regency Sq. Lafayette, LA 70508  
Ph. 337-237-2200 Fax. 337-232-3289  
[www.fenstermaker.com](http://www.fenstermaker.com)

DRAWN BY: BMO		REVISIONS			
PROJ. MGR.: VHV	No.	DATE:		REVISED BY:	
DATE: MAY 12, 2014	No.	DATE:		REVISED BY:	
FILENAME: T:\2014\2144788\DWG\Salado Draw 29 26 33 Fed Com 8H_SUP.dwg					



Scale: 1"=300'

300' 0 150' 300'