

District I
1625 N. French Dr., Hobbs, NM 88240
Phone: (575) 393-6161 Fax: (575) 393-0720
District II
811 S. First St., Artesia, NM 88210
Phone: (575) 748-1283 Fax: (575) 748-9720
District III
1000 Rio Brazos Road, Aztec, NM 87410
Phone: (505) 334-6178 Fax: (505) 334-6170
District IV
1220 S. St. Francis Dr., Santa Fe, NM 87505
Phone: (505) 476-3460 Fax: (505) 476-3462

State of New Mexico
Energy, Minerals & Natural Resources Department
OIL CONSERVATION DIVISION
1220 South St. Francis Dr.
Santa Fe, NM 87505

Form C-102
Revised August 1, 2011
Submit one copy to appropriate
District Office
☐ AMENDED REPORT

WELL LOCATION AND ACREAGE DEDICATION PLAT

1 API Number 30-025-42442		2 Pool Code 97955		3 Pool Name WC-025 G 06 92633 19P; BONE SPRING	
4 Property Code 314194		5 Property Name SALADO DRAW 29 26 33 FED COM			6 Well Number 7H
7 OGRID No. 4323		8 Operator Name CHEVRON U.S.A. INC.			9 Elevation 3247'

10 Surface Location

UL or lot no.	Section	Township	Range	Lot Idn	Feet from the	North/South line	Feet from the	East/West line	County
B	29	26 SOUTH	33 EAST, N.M.P.M.		136'	NORTH	1407'	EAST	LEA

11 Bottom Hole Location If Different From Surface

UL or lot no.	Section	Township	Range	Lot Idn	Feet from the	North/South line	Feet from the	East/West line	County
H	32	26 SOUTH	33 EAST, N.M.P.M.		280'	SOUTH	991'	EAST	LEA

12 Dedicated Acres 237.44	13 Joint or Infill	14 Consolidation Code	15 Order No.
-------------------------------------	--------------------	-----------------------	--------------

No allowable will be assigned to this completion until all interests have been consolidated or a non-standard unit has been approved by the division.

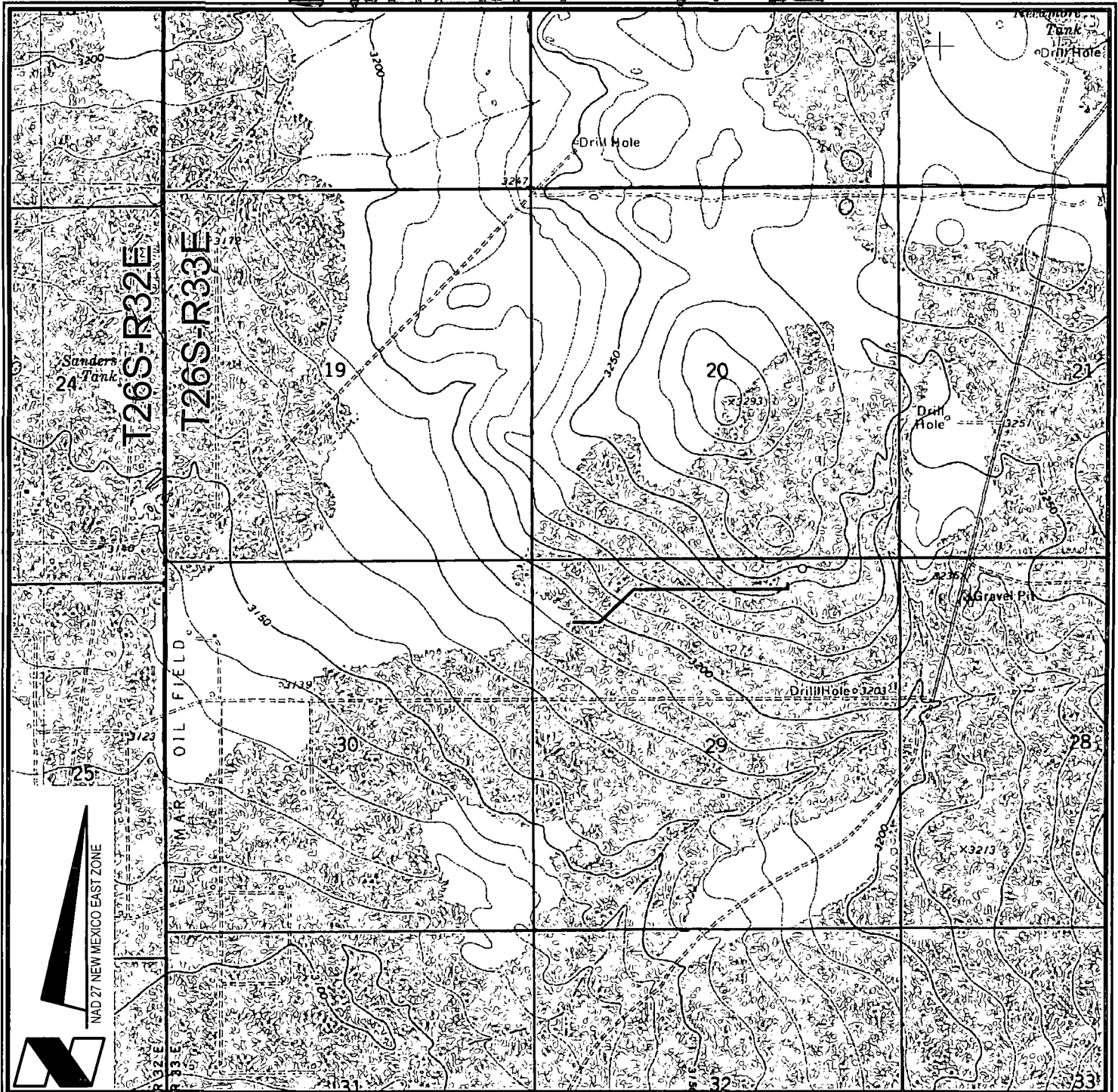
<p>SALADO DRAW 29 26 33 FED COM NO. 7H WELL</p> <p>X= 730.435 NAD 27 Y= 372.254 LAT. 32.021261 LONG. 103.589818</p> <p>X= 771.823 NAD83 Y= 372.311 LAT. 32.021386 LONG. 103.590284</p> <p>ELEVATION +3247' NAVD 88</p>	<p>Proposed First Take Point 330' FNL, 991' FEL</p> <p>Proposed Last Take Point 330' FSL, 991' FEL</p> <p>LEA COUNTY, NM LOVING COUNTY, TX</p>	<p>17 OPERATOR CERTIFICATION</p> <p>I hereby certify that the information contained herein is true and complete to the best of my knowledge and belief, and that this organization either owns a working interest or undivided mineral interest in the land including the proposed bottom hole location or has a right to drill this well at this location pursuant to a contract with an owner of such a mineral or working interest, or to a voluntary pooling agreement or a compulsory pooling order heretofore entered by the division.</p> <p><i>Cindy Herrera-Murillo</i> Signature Date 2-12-15</p> <p>Cindy Herrera-Murillo Printed Name cherreramurillo@chevron.com E-mail Address</p> <p>18 SURVEYOR CERTIFICATION</p> <p>I hereby certify that the well location shown on this plat was plotted from field notes of actual surveys made by me or under my supervision, and that the same is true and correct to the best of my belief.</p> <p>2-12-15 Date of Survey Signature and Seal of Professional Surveyor Certificate Number #15078</p>
--	--	--

CORNER COORDINATES TABLE (NAD 27)

A - Y=372382.09, X=729197.59
B - Y=372390.91, X=730519.68
C - Y=372399.73, X=731841.78
D - Y=371082.70, X=729207.78
E - Y=371072.13, X=730529.72
F - Y=367115.79, X=730559.81
G - Y=367127.04, X=731881.26
H - Y=364563.17, X=730579.86
I - Y=364572.35, X=731900.79

FEB 16 2015

Exhibit A-2



VICINITY MAP

2000' 0 1000' 2000'
Scale: 1" = 2000'

CHEVRON U.S.A. INC.

SALADO DRAW 29 26 33 FED COM NO. 7H WELL
LOCATED 136' FNL AND 3881' FWL
SECTION 29, T26S-R33E
LEA COUNTY, NEW MEXICO



Lafayette New Orleans Houston
135 Regency Sq. Lafayette, LA 70508
Ph. 337-237-2200 Fax. 337-232-3299
www.fenstermaker.com

DRAWN BY: BMO

REVISED:

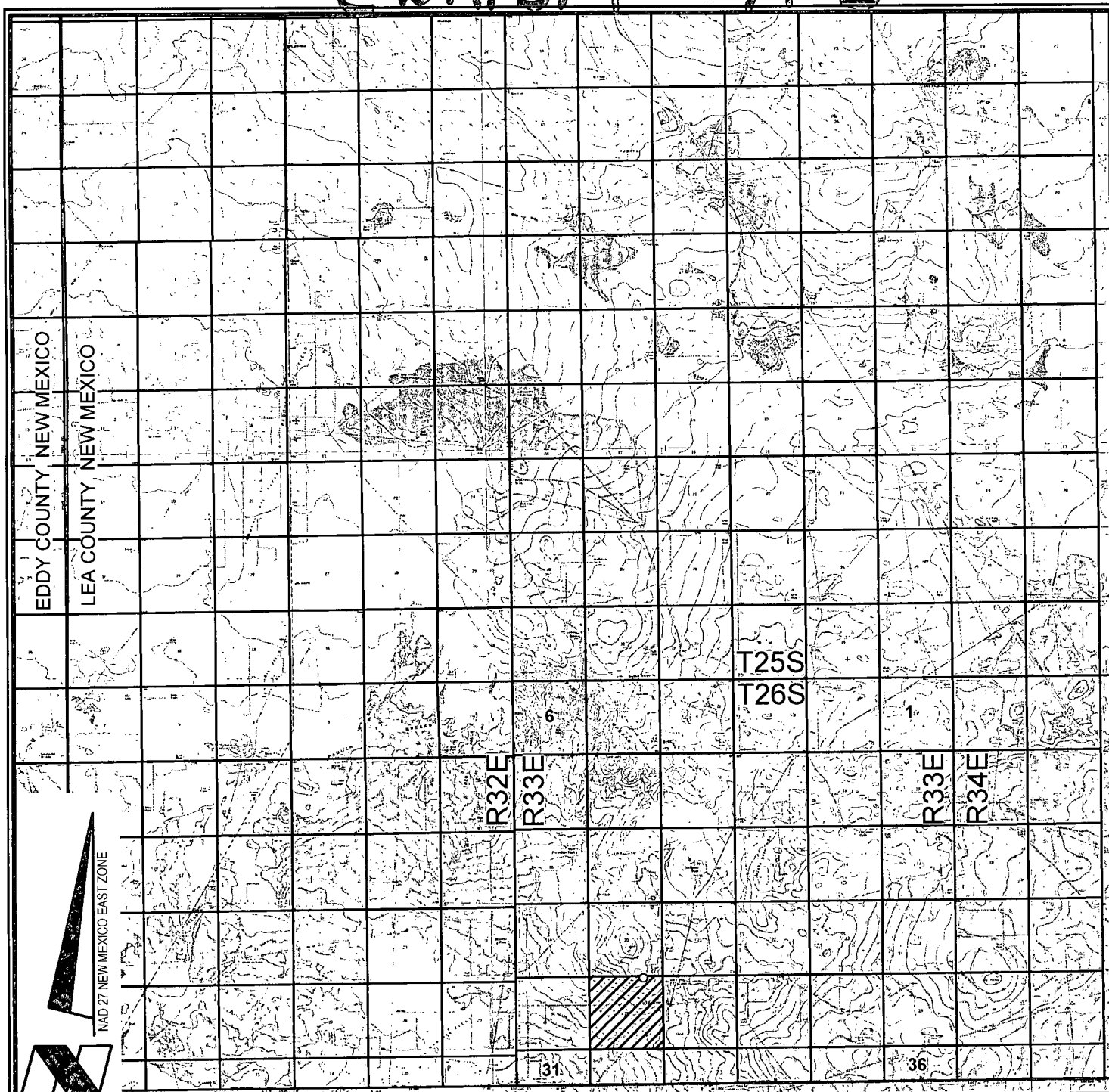
DATE: MAY 12, 2014

PROJ. MGR.: VHV

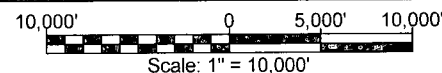
SHEET 1 OF 3 SHEETS

FILENAME: T:\2014\2144785\DWG\Salado Draw 29 26 33 Fed Com 7H_APD.dwg

Exhibit A.3



VICINITY MAP



CHEVRON U.S.A. INC.

SALADO DRAW 29 26 33 FED COM NO. 7H WELL

LOCATED 136' FNL AND 3881' FWL

SECTION 29, T26S-R33E

LEA COUNTY, NEW MEXICO



Lafayette New Orleans Houston
135 Regency Sq. Lafayette, LA 70508
Ph. 337-237-2200 Fax. 337-232-3299
www.fenstermaker.com

DRAWN BY: BMO

REVISED:

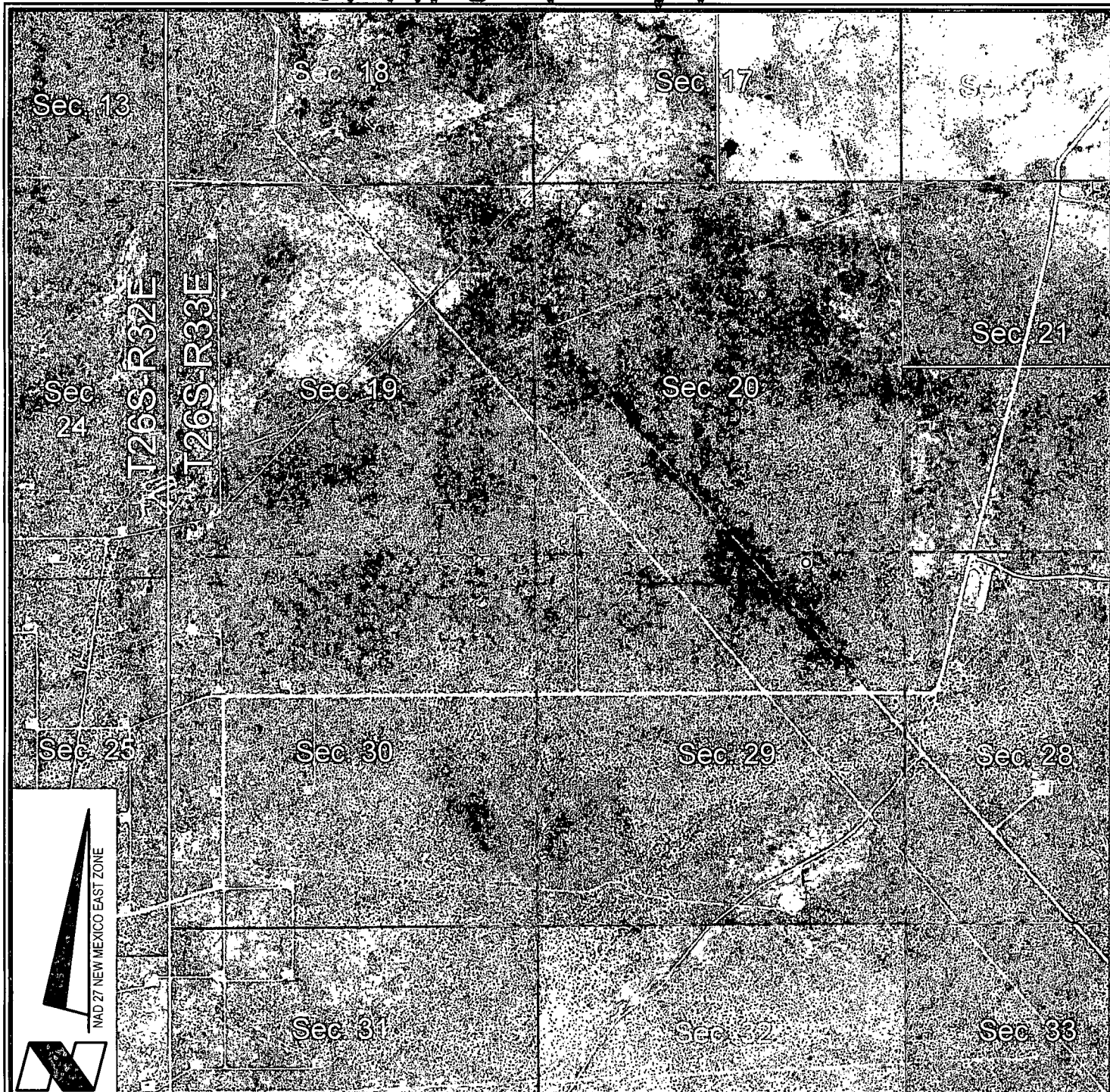
DATE: MAY 12, 2014

PROJ. MGR.: VHV

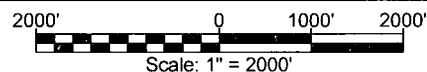
SHEET 2 OF 3 SHEETS




FILENAME: T:\2014\2144785\DWG\Salado Draw 29 26 33 Fed Com 7H_APD.dwg

Exhibit A-4



VICINITY MAP



-  = FEDERAL LAND
-  = FEE LAND
-  = STATE LAND

CHEVRON U.S.A. INC.

SALADO DRAW 29 26 33 FED COM NO. 7H WELL
 LOCATED 136' FNL AND 3881' FWL
 SECTION 29, T26S-R33E
 LEA COUNTY, NEW MEXICO



Lafayette New Orleans Houston
 135 Regency Sq. Lafayette, LA 70508
 Ph. 337-237-2200 Fax. 337-232-3299
www.fenstermaker.com

DRAWN BY: BMO

REVISED:

DATE: MAY 12, 2014

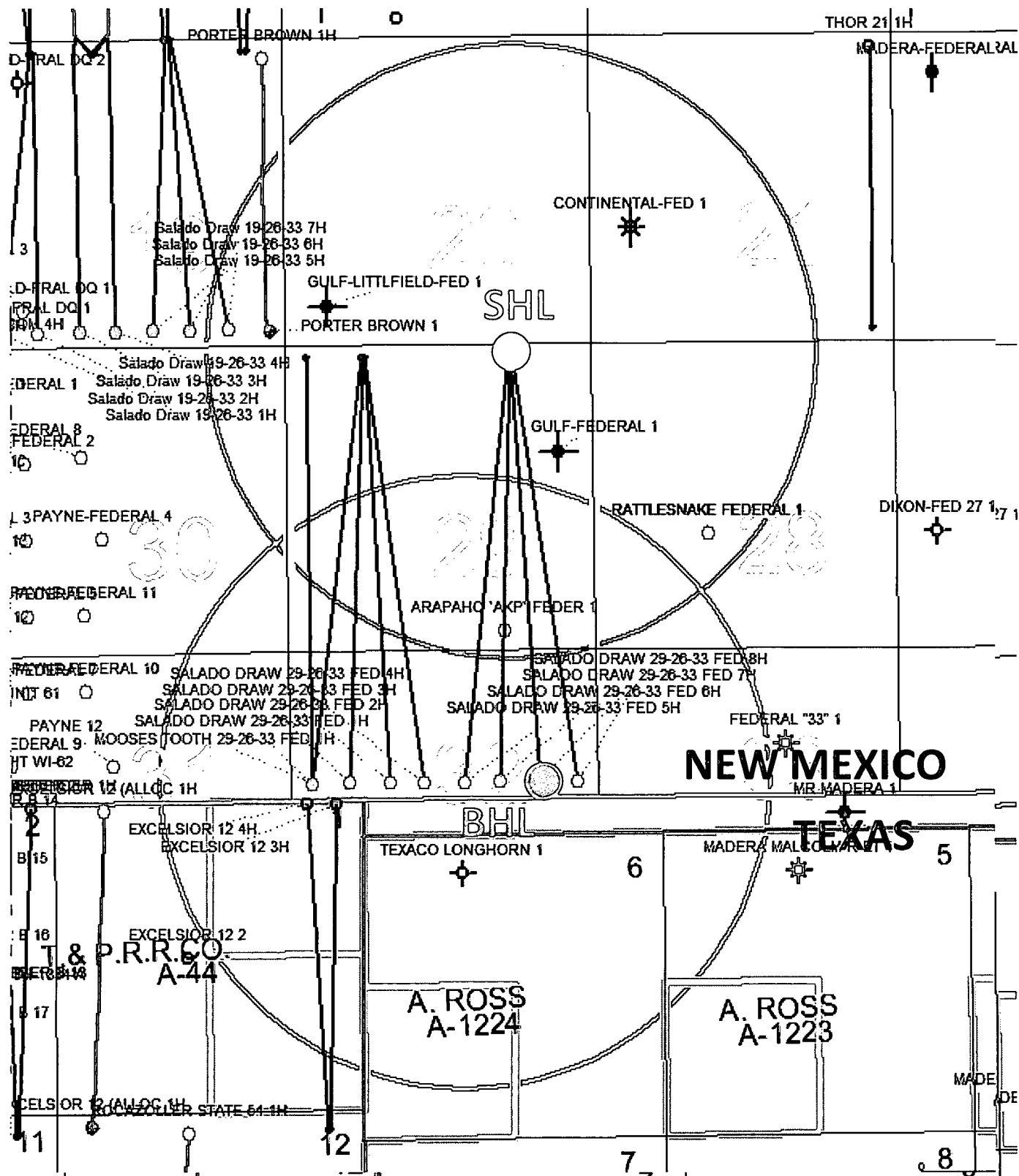
PROJ. MGR.: VHV

SHEET 3 OF 3 SHEETS

FILENAME: T:\2014\2144785\DWG\Salado Draw 29 26 33 Fed Com 7H_APD.dwg

Exhibit B

SALADO DRAW 29-26-33 FED 7H SURFACE AND BOTTOM HOLE LOCATION TWN 26S RNG 33E SEC 29 & 32 1 MILE RADIUS



NOTE:

Please be advised, that while reasonable efforts are made to locate and verify pipelines and anomalies using our standard pipeline locating equipment, it is impossible to be 100 % effective. As such, we advise using caution when performing work as there is a possibility that pipelines and other hazards, such as fiber optic cables, PVC pipelines, etc. may exist undetected on site.

NOTE:

Many states maintain information centers that establish links between those who dig (excavators) and those who own and operate underground facilities (operators). It is advisable and in most states, law, for the contractor to contact the center for assistance in locating and marking underground utilities. For guidance: New Mexico One Call - www.nmonecall.org

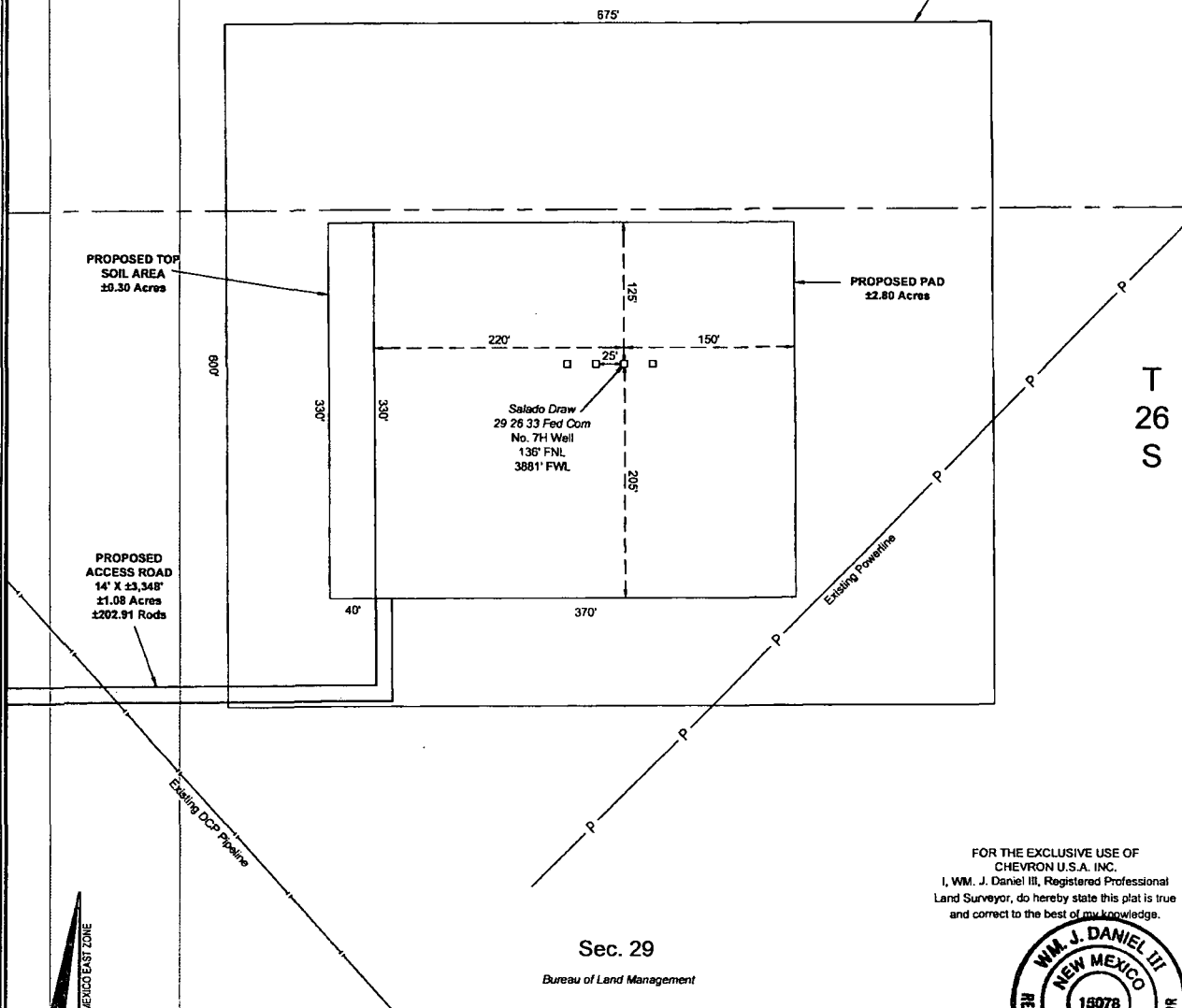
DISCLAIMER: At this time, C.H. Fenstermaker & Associates, LLC has not performed nor was asked to perform any type of engineering, hydrological modeling, flood plain, or "No Rise" certification analysis, including but not limited to determining whether the project will impact flood hazards in connection with federal/FEMA, state, and/or local laws, ordinances and regulations. Accordingly, Fenstermaker makes no warranty or representation of any kind as to the foregoing issues, and persons or entities using this information shall do so at their own risk.

NW ARCH. AREA CORNER	NE ARCH. AREA CORNER	SE ARCH. AREA CORNER	SW ARCH. AREA CORNER	SALADO DRAW 29 26 33 FED COM 7H WELL
X= 730,084 NAD 27 Y= 372,552	X= 730,758 NAD 27 Y= 372,556	X= 730,763 NAD 27 Y= 371,866	X= 730,087 NAD 27 Y= 371,952	X= 730,435 NAD 27 Y= 372,254
ELEVATION +3265' NAVD 88	ELEVATION +3253' NAVD 88	ELEVATION +3239' NAVD 88	ELEVATION +3240' NAVD 88	LAT. 32.021261 LONG. 103.989819
NW PAD CORNER/NE TOP SOIL AREA CORNER	NE PAD CORNER	SE PAD CORNER	SW PAD CORNER/SE TOP SOIL AREA CORNER	X= 771,623 NAD83 Y= 372,311 LAT. 32.021386 LONG. 103.990284
X= 730,215 NAD 27 Y= 372,377	X= 730,585 NAD 27 Y= 372,380	X= 730,587 NAD 27 Y= 372,050	X= 730,217 NAD 27 Y= 372,047	ELEVATION +3247' NAVD 88
ELEVATION +3256' NAVD 88	ELEVATION +3254' NAVD 88	ELEVATION +3240' NAVD 88	ELEVATION +3241' NAVD 88	
		NW TOP SOIL AREA CORNER	SW TOP SOIL AREA CORNER	
		X= 730,175 NAD 27 Y= 372,377	X= 730,177 NAD 27 Y= 372,047	
		ELEVATION +3258' NAVD 88	ELEVATION +3242' NAVD 88	

R 33 E

Sec. 20
Bureau of Land Management

PROPOSED
ARCHAEOLOGICAL
AREA
±6.50 Acres



FOR THE EXCLUSIVE USE OF
CHEVRON U.S.A. INC.
I, WM. J. DANIEL III, Registered Professional
Land Surveyor, do hereby state this plat is true
and correct to the best of my knowledge.



WM. J. Daniel III
Registration No. 15078

CHEVRON U.S.A. INC.
PROPOSED PAD & ACCESS ROAD
SALADO DRAW 29 26 33 FED COM 7H WELL
SECTION 29, T26S-R33E
LEA COUNTY, NEW MEXICO

Page 1 of 2



135 Regency Sq. Lafayette, LA 70508
Ph. 337-237-2200 Fax. 337-232-3299
www.fenstermaker.com

Scale: 1"=100'
100' 0 50' 100'

DRAWN BY:	BMO	REVISIONS	
PROJ. MGR.:	VHV	No.	DATE:
DATE:	MAY 12, 2014	No.	DATE:
FILENAME:	T:\2014\2144785\DWG\Salado Draw 29 26 33 Fed Com 7H_SUP.dwg		

R 33 E

Sec. 20

Bureau of Land Management

SEE
PAGE 1

T
26
S

Sec. 29

Bureau of Land Management

Existing Lease Road

Fnd. 2"
Iron Pipe
w/Cap

Existing
Frac Pond

Proposed
Frac Pond
Expansion

PROPOSED
ACCESS ROAD
14' X ±3,348'
±1.08 Acres
±202.91 Rods

Existing DCP Pipeline

Existing Powerline

FOR THE EXCLUSIVE USE OF
CHEVRON U.S.A. INC.
I, WM. J. DANIEL III, Registered Professional
Land Surveyor, do hereby state this plat is true
and correct to the best of my knowledge.



Wm. J. Daniel III
Registration No. 15078

NOTE:

Please be advised, that while reasonable efforts are made to locate and verify pipelines and anomalies using our standard pipeline locating equipment, it is impossible to be 100 % effective. As such, we advise using caution when performing work as there is a possibility that pipelines and other hazards, such as fiber optic cables, PVC pipelines, etc. may exist undetected on site.

NOTE:

Many states maintain information centers that establish links between those who dig (excavators) and those who own and operate underground facilities (operators). It is advisable and in most states, law, for the contractor to contact the center for assistance in locating and marking underground utilities. For guidance: New Mexico One Call - www.nmonecall.org

DISCLAIMER: At this time, C.H. Fenstermaker & Associates, LLC has not performed nor was asked to perform any type of engineering, hydrological modeling, flood plain, or "No Rise" certification analyses, including but not limited to determining whether the project will impact flood hazards in connection with federal/FEMA, state, and/or local laws, ordinances and regulations. Accordingly, Fenstermaker makes no warranty or representation of any kind as to the foregoing issues, and persons or entities using this information shall do so at their own risk.

LEGEND

—	Section Line
—X—	Fence Line
●	Found Occupation
—P—	Existing Powerline
— —	Existing Pipeline

SURFACE USE PLAT

CHEVRON U.S.A. INC.

PROPOSED PAD & ACCESS ROAD

SALADO DRAW 29 26 33 FED COM 7H WELL

SECTION 29, T26S-R33E

LEA COUNTY, NEW MEXICO

Page 2 of 2



136 Regency Sq. LaSalle, LA 70508
Ph. 337-237-2200 Fax. 337-232-3269
www.fenstermaker.com

DRAWN BY: BMO		REVISIONS	
PROJ. MGR.: VHV	No.	DATE:	REVISED BY:
DATE: MAY 12, 2014	No.	DATE:	REVISED BY:
FILENAME: T:\2014\2144785\DWG\Salado Draw 29 26 33 Fed Com 7H_SUP.dwg			

Nabors Pace X Section 29/32 2nd Pad



H2S Monitor Locations	
1	2
3	4
5	6
7	8
9	10
11	12
13	14
15	16
17	18
19	20
21	22
23	24
25	26
27	28
29	30
31	32
33	34
35	36
37	38
39	40
41	42
43	44
45	46
47	48
49	50
51	52
53	54
55	56
57	58
59	60
61	62
63	64
65	66
67	68
69	70
71	72
73	74
75	76
77	78
79	80
81	82
83	84
85	86
87	88
89	90
91	92
93	94
95	96
97	98
99	100

- ### Flag Locations

- ### 10 Minute Escape Packs

- ## 45 Minute Escape Packs

- | | | | |
|--------------------------------|--|--|--|
| • 2 at Briefing Area | | | |
| • 2 at Alternate Briefing Area | | | |

Legend

- H2S Monitor
○ Flag

Exhibit E

NOTE:

Please be advised, that while reasonable efforts are made to locate and verify pipelines and anomalies using our standard pipeline locating equipment, it is impossible to be 100 % effective. As such, we advise using caution when performing work as there is a possibility that pipelines and other hazards, such as fiber optic cables, PVC pipelines, etc. may exist undetected on site.

NOTE:

Many states maintain information centers that establish links between those who dig (excavators) and those who own and operate underground facilities (operators). It is advisable and in most states, law, for the contractor to contact the center for assistance in locating and marking underground utilities. For guidance: New Mexico One Call - www.nmonocall.org

DISCLAIMER: At this time, C.H. Fenstermaker & Associates, LLC has not performed nor was asked to perform any type of engineering, hydrological modeling, flood plain, or "No Rise" certification analyses, including but not limited to determining whether the project will impact flood hazards in connection with federal/FEMA, state, and/or local laws, ordinances and regulations. Accordingly, Fenstermaker makes no warranty or representation of any kind as to the foregoing issues, and persons or entities using this information shall do so at their own risk.

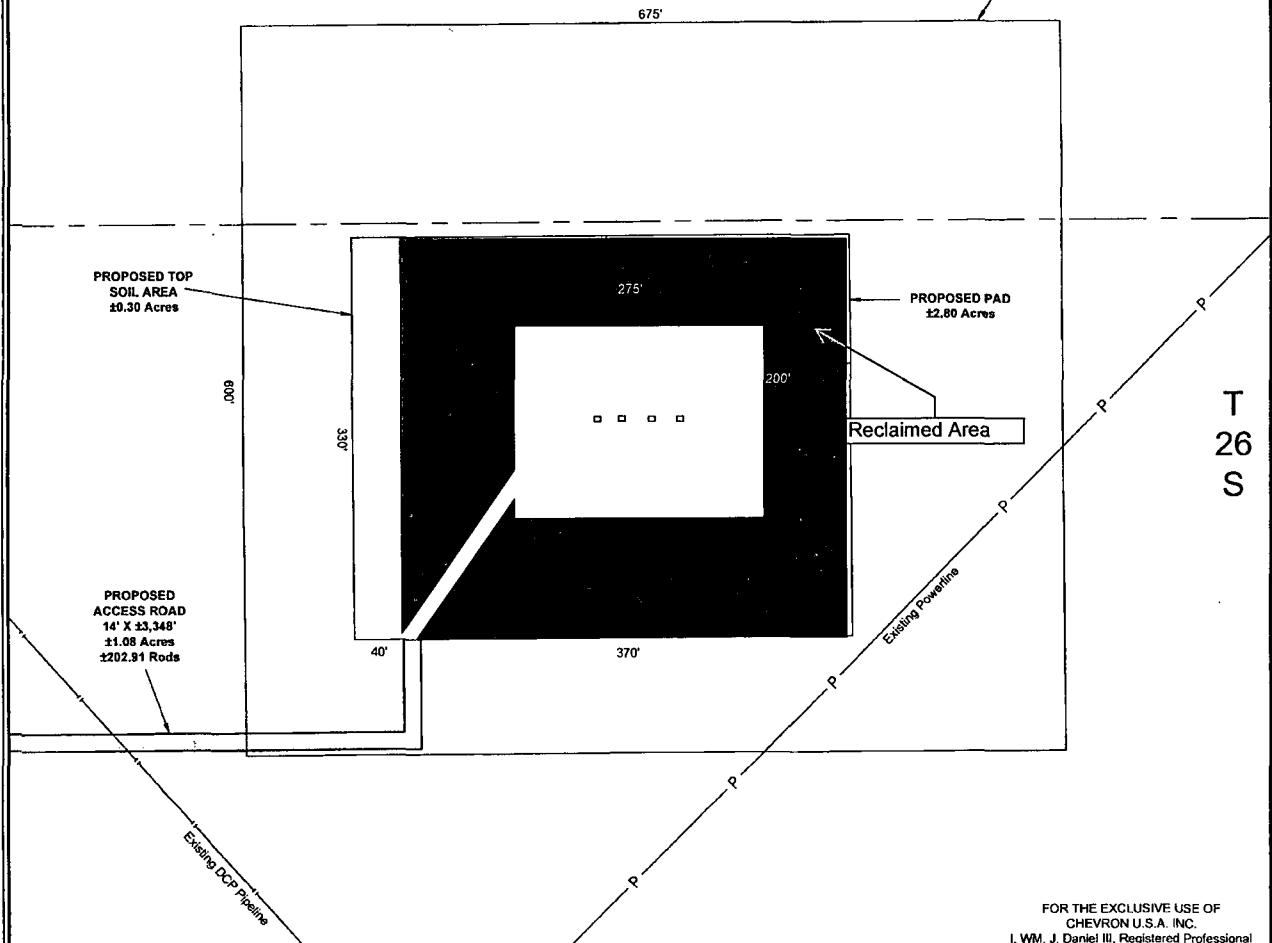
NW ARCH. AREA CORNER	NE ARCH. AREA CORNER	SE ARCH. AREA CORNER	SW ARCH. AREA CORNER	SALADO DRAW 29 26 33 FED COM 5H WELL
X= 730,084 NAD 27 Y= 372,552	X= 730,758 NAD 27 Y= 372,556	X= 730,763 NAD 27 Y= 371,956	X= 730,087 NAD 27 Y= 371,952	X= 730,385 NAD 27 Y= 372,254
ELEVATION +3265' NAVD 88	ELEVATION +3253' NAVD 88	ELEVATION +3239' NAVD 88	ELEVATION +3240' NAVD 88	LAT. 32.021261 LONG. 103.589979
NW PAD CORNER/NE TOP SOIL AREA CORNER	NE PAD CORNER	SE PAD CORNER	SW PAD CORNER/SE TOP SOIL AREA CORNER	X= 771,573 NAD83 Y= 372,311
X= 730,215 NAD 27 Y= 372,377	X= 730,585 NAD 27 Y= 372,380	X= 730,587 NAD 27 Y= 372,050	X= 730,217 NAD 27 Y= 372,047	LAT. 32.021386 LONG. 103.590446
ELEVATION +3256' NAVD 88	ELEVATION +3254' NAVD 88	ELEVATION +3248' NAVD 88	ELEVATION +3241' NAVD 88	ELEVATION +3247' NAVD 88
NW TOP SOIL AREA CORNER	SW TOP SOIL AREA CORNER			
X= 730,175 NAD 27 Y= 372,377	X= 730,177 NAD 27 Y= 372,047			
ELEVATION +3258' NAVD 88	ELEVATION +3242' NAVD 88			

R 33 E

Sec. 20

Bureau of Land Management

PROPOSED
ARCHAEOLOGICAL
AREA
16.60 Acres



T
26
S

Sec. 29

Bureau of Land Management

FOR THE EXCLUSIVE USE OF
CHEVRON U.S.A. INC.
I, WM. J. Daniel III, Registered Professional
Land Surveyor, do hereby state this plat is true
and correct to the best of my knowledge.



WM. J. Daniel III
Registration No. 15078



LEGEND	
—	Section Line
P	Existing Powerline
—	Existing Pipeline

CHEVRON U.S.A. INC.
PROPOSED PAD & ACCESS ROAD
SALADO DRAW 29 26 33 FED COM 5H WELL
SECTION 29, T26S-R33E
LEA COUNTY, NEW MEXICO

Page 1 of 2



135 Regency Sq. Lafayette, LA 70508
Ph. 337-237-2200 Fax. 337-232-3299
www.fenstermaker.com

Scale: 1"=100'
100' 0 50' 100'

DRAWN BY: BMO		REVISIONS	
PROJ. MGR.: VHV	No.	DATE:	REVISED BY:
DATE: APRIL 28, 2014	No.	DATE:	REVISED BY:
FILENAME: T:\2014\2144783\DWG\Salado Draw 29 26 33 Fed Com 5H_SUP.dwg			