

District I
1625 N. French Dr., Hobbs, NM 88240
Phone: (575) 393-6161 Fax: (575) 393-0720
District II
811 S. First St., Artesia, NM 88210
Phone: (575) 748-1283 Fax: (575) 748-9720
District III
1000 Rio Brazos Road, Aztec, NM 87410
Phone: (505) 334-6178 Fax: (505) 334-6170
District IV
1220 S. St. Francis Dr., Santa Fe, NM 87505
Phone: (505) 476-3460 Fax: (505) 476-3462

State of New Mexico
Energy, Minerals & Natural Resources Department
OIL CONSERVATION DIVISION
1220 South St. Francis Dr.
Santa Fe, NM 87505

Form C-102
Revised August 1, 2011
Submit one copy to appropriate
District Office
☐ AMENDED REPORT

FEB 10 2015

WELL LOCATION AND ACREAGE DEDICATION PLAT

1 API Number 30-025-42431		2 Pool Code 96724		3 Pool Name Cruz MADERA; DELAWARE NE		
4 Property Code 30884 ✓		5 Property Name THISTLE UNIT			6 Well Number 26H	
7 GRID NO. 6137		8 Operator Name DEVON ENERGY PRODUCTION COMPANY, L. P.			9 Elevation 3703'	
10 Surface Location						
UL or lot no. M	Section 22	Township 23S	Range 33E	Lot Idn	Feet from the 100	North/South line SOUTH
					Feet From the 660	East/West line WEST
						County LEA
11 Bottom Hole Location If Different From Surface						
UL or lot no. D	Section 22	Township 23S	Range 33E	Lot Idn	Feet from the 330	North/South line NORTH
					Feet from the 660	East/West line WEST
						County LEA
12 Dedicated Acres 160		13 Joint or Infill		14 Consolidation Code		15 Order No.

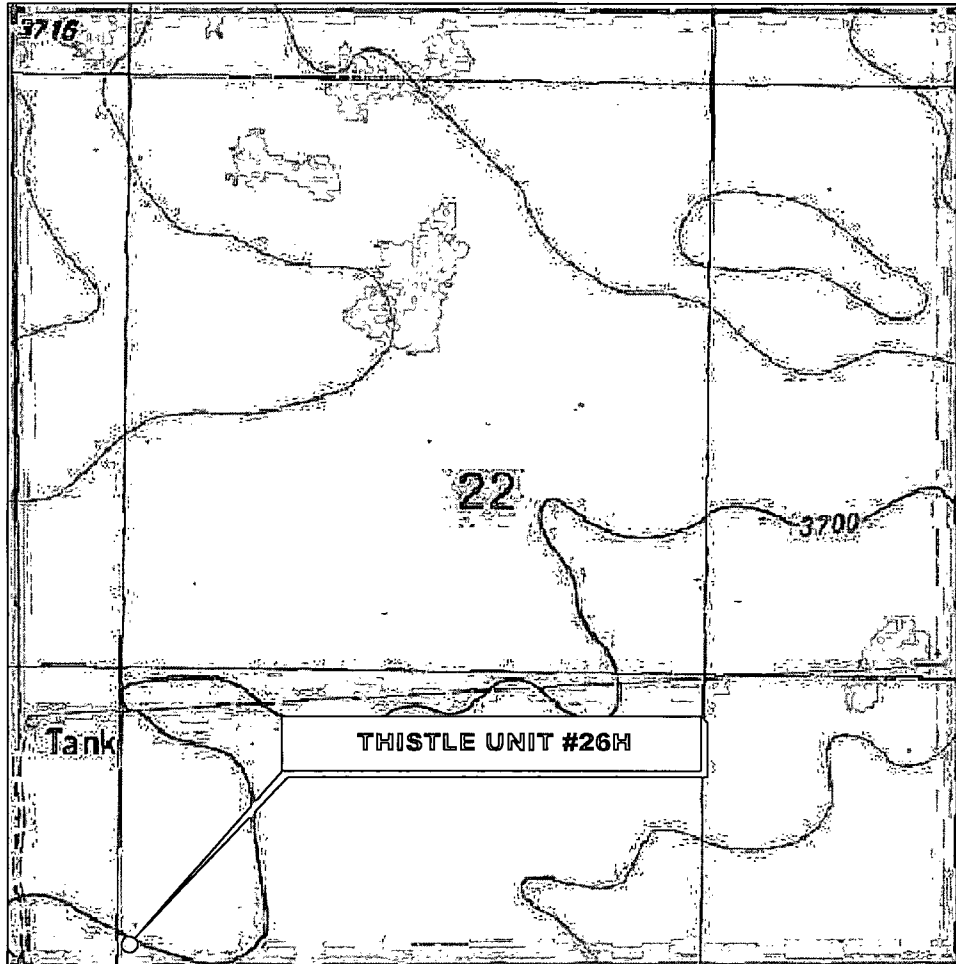
No allowable will be assigned to this completion until all interest have been consolidated or a non-standard unit has been approved by the division.

		<p>17 OPERATOR CERTIFICATION</p> <p>I hereby certify that the information contained herein is true and complete to the best of my knowledge and belief, and that this organization either owns a working interest or unleased mineral interest in the land including the proposed bottom hole location or has a right to drill this well at this location pursuant to a contract with an owner of such a mineral or working interest, or to a voluntary pooling agreement or a compulsory pooling order heretofore entered by the division.</p> <p>Signature: <i>[Signature]</i> Date: 2/9/2015 Printed Name: David H. Cook Regulatory Specialist E-mail Address: david.cook@dvn.com</p>
<p>18 SURVEYOR CERTIFICATION</p> <p>I hereby certify that the well location shown on this plat was plotted from field notes of actual surveys made by me or under my supervision, and that the same is true and correct to the best of my belief.</p> <p>12-10-14 Date of Survey Signature and Seal of Professional Surveyor: <i>[Signature]</i> Certificate Number: 20451</p>		<p>20451 Certificate Number</p>

RRC - Firm No.: TX 10193838 NM 4655451 - Job No.: LS140505

FEB 17 2015

LOCATION VERIFICATION MAP



*SECTION 22, TWP. 23 SOUTH, RGE. 33 EAST,
N. M. P. M., LEA CO., NEW MEXICO*

OPERATOR: Devon Energy
Production Company, L. P.
 LEASE: Thistle Unit
 WELL NO.: 26H
 ELEVATION: 3703'

LOCATION: 100' FSL & 660' FWL
 CONTOUR INTERVAL: 10'
 USGS TOPO. SOURCE MAP:
Tip Top Wells, NM (1984)

Firm No.: TX 10193838 NM 4655451

Copyright 2014 - All Rights Reserved

NO.	REVISION	DATE
JOB NO.: LS140505		
DWG. NO.: 140505LVM		

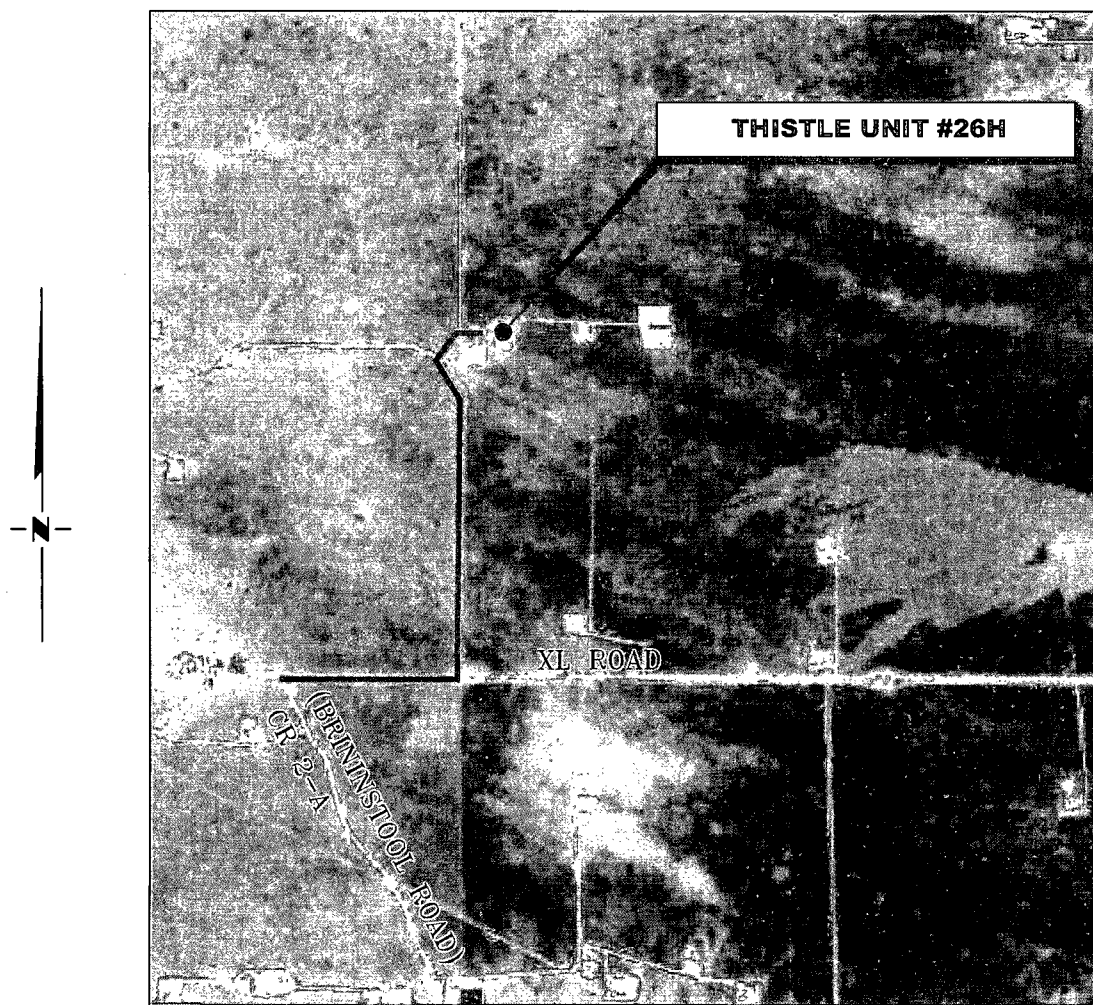
RRC

308 W. BROADWAY ST., HOBBS, NM 88240 (575) 964-8200

SCALE: 1"=1000'
DATE: 12-10-14
SURVEYED BY: GB
DRAWN BY: JC
APPROVED BY: REB
SHEET : 1 OF 3

VICINITY MAP

NOT TO SCALE



*SECTION 22, TWP. 23 SOUTH, RGE. 33 EAST,
N. M. P. M., LEA CO., NEW MEXICO*

OPERATOR: Devon Energy
Production Company, L. P.

LOCATION: 100' FSL & 660' FWL
ELEVATION: 3703'

LEASE: Thistle Unit

WELL NO.: 26H

Firm No.: TX 10193838 NM 4655451

Copyright 2014 - All Rights Reserved

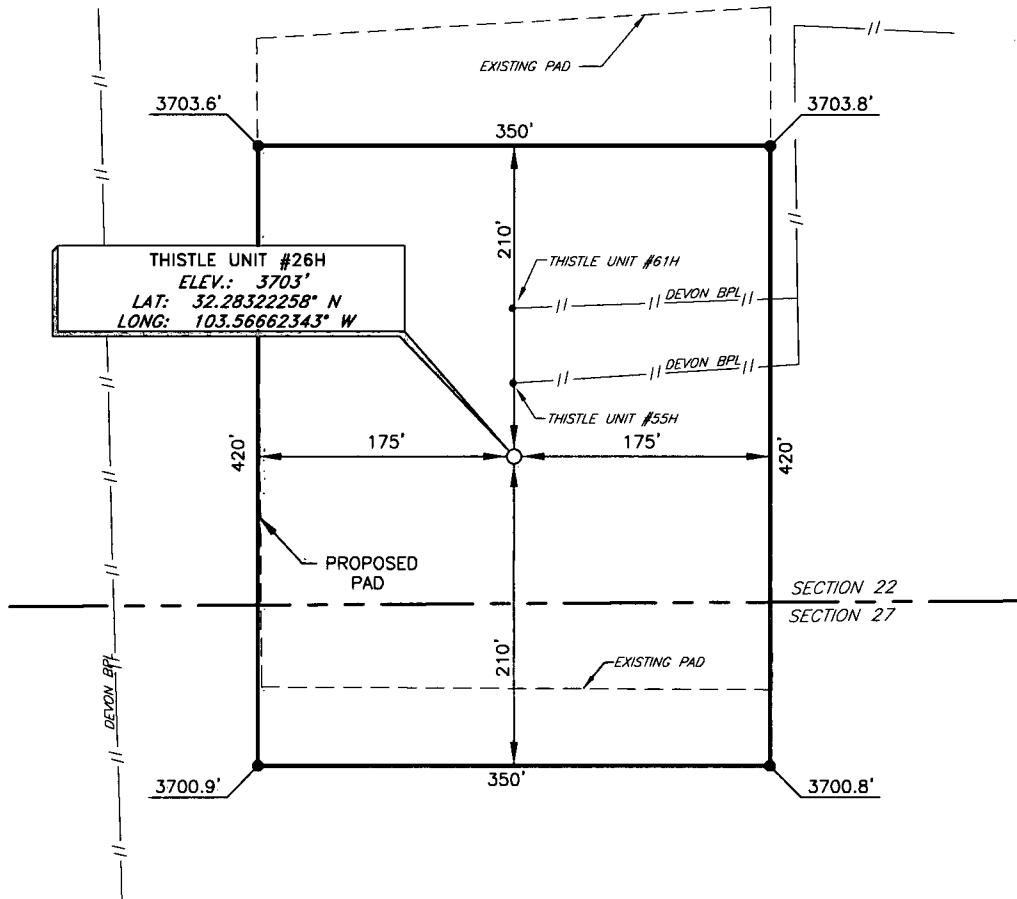
NO.	REVISION	DATE
JOB NO.: LS140505		
DWG. NO.: 140505VM		

RRC

308 W. BROADWAY ST., HOBBS, NM 88240 (575) 964-8200

SCALE: NTS
DATE: 12-10-14
SURVEYED BY: GB
DRAWN BY: JC
APPROVED BY: REB
SHEET : 2 OF 3

DEVON ENERGY PRODUCTION COMPANY, L. P.
 THISTLE UNIT #26H
 (100' FSL & 660' FWL)
 SECTION 22, T23S, R33E
 N. M. P. M., LEA CO., NEW MEXICO



DIRECTIONS TO LOCATION

From the intersection of XL Road and CR 2-A (Brininstool Rd);
 Go East on XL Road for approx. 0.5 miles to a lease road on the left;
 Turn left on lease road and go North turning Northwest approx. 1.0 miles;
 Turn right on a lease road and go Northeast approx. 0.1 miles;
 Turn right on a lease road and go East approx. 0.2 miles to the Thistle
 Unit #26H;
 Location is approx. 100 feet South of the Thistle Unit #61H.

SCALE: 1" = 100'
 0 50 100
 BEARINGS ARE
 NAD 83 GRID - NM EAST
 DISTANCES ARE
 GROUND.

Firm No.: TX 10193838 NM 4655451

Copyright 2014 - All Rights Reserved

NO.	REVISION	DATE
JOB NO.:	LS140505	
DWG. NO.:	140505PAD	

RRC

308 W. BROADWAY ST., HOBBS, NM 88240 (575) 964-8200

SCALE: 1" = 100'
DATE: 12-10-14
SURVEYED BY: GB
DRAWN BY: JC
APPROVED BY: REB
SHEET : 3 OF 3