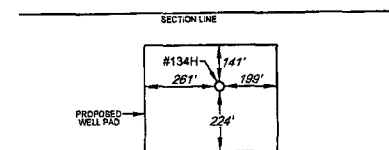
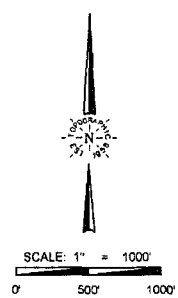
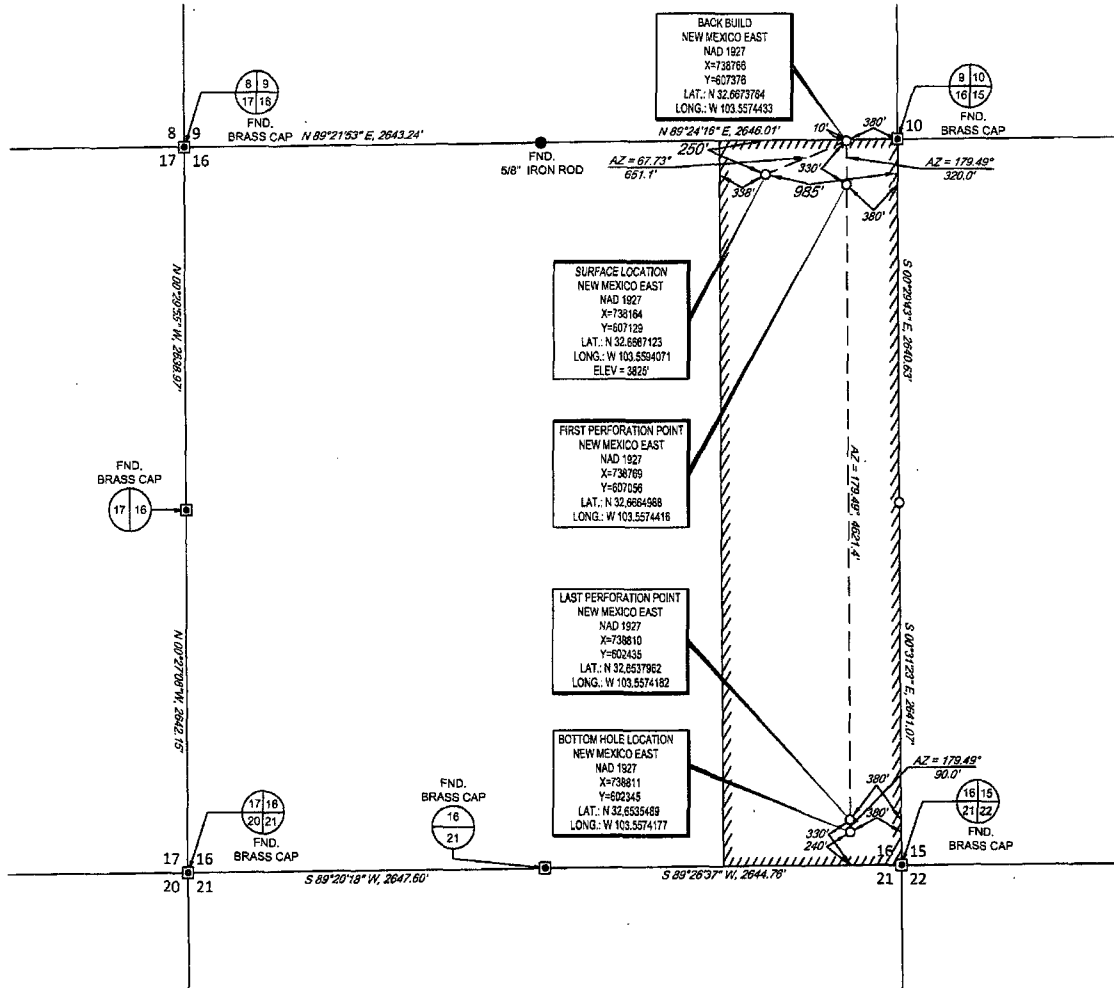


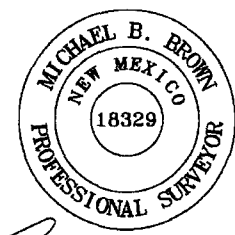


30-025-42352

SECTION 16, TOWNSHIP 19 SOUTH, RANGE 34 EAST, N.M.P.M.
LEA COUNTY, NEW MEXICO



DETAIL VIEW
SCALE: 1" = 500'



[Signature]
Michael Blake Brown, P.S. No. 18329
JANUARY 5, 2015

LEASE NAME & WELL NO.: CIMARRON STATE 16-19S-34E RN #134H
SECTION 16 TWP 19-S RGE 34-E SURVEY N.M.P.M.
COUNTY LEA STATE NM
DESCRIPTION 250' FNL & 985' FEL

DISTANCE & DIRECTION FROM INT. OF NM-529 & NM-238 GO WEST
ON NM-529 ±5.7 MILES, THENCE SOUTHWEST (LEFT) ON CO. RD. 55
±3.4 MILES TO A POINT ±1000 FEET SOUTHEAST OF THE LOCATION.

ALL BEARINGS, DISTANCES, AND COORDINATE VALUES CONTAINED HEREON ARE GRID
BASED UPON THE NEW MEXICO STATE PLANE COORDINATE SYSTEM, EAST ZONE OF THE
NORTH AMERICAN DATUM 1927, U.S. SURVEY FEET
THIS EASEMENT/SERVITUDE LOCATION SHOWN HEREON HAS BEEN SURVEYED ON THE GROUND
UNDER MY SUPERVISION AND PREPARED ACCORDING TO THE EVIDENCE FOUND AT THE TIME OF
SURVEY, AND DATA PROVIDED BY MATADOR PRODUCTION COMPANY. THIS CERTIFICATION IS MADE
AND LIMITED TO THOSE PERSONS OR ENTITIES SHOWN ON THE FACE OF THIS PLAT AND IS
NON-TRANSFERABLE. THIS SURVEY IS CERTIFIED FOR THIS TRANSACTION ONLY.

TOPOGRAPHIC
LOYALTY INNOVATION LEGACY
1400 EVERMAN PARKWAY, Ste. 197 • FT. WORTH, TEXAS 76140
TELEPHONE: (817) 744-7512 • FAX: (817) 744-7548
2503 NORTH BIG SPRINGS • MIDLAND, TEXAS 79705
TELEPHONE: (432) 682-1653 OR (800) 767-1653 • FAX: (432) 682-1743
WWW.TOPOGRAPHIC.COM

FEB 24 2015