

HOBBSOCD

FEB 05 2015

District I
1625 N. French Dr., Hobbs, NM 88240
Phone: (575) 393-6161 Fax: (575) 393-0720

District II
811 S. First St., Artesia, NM 88210
Phone: (575) 748-1283 Fax: (575) 748-9720

District III
1000 Rio Brazos Road, Aztec, NM 87410
Phone: (505) 334-6178 Fax: (505) 334-6170

District IV
1220 S. St. Francis Dr., Santa Fe, NM 87505
Phone: (505) 476-3460 Fax: (505) 476-3462

State of New Mexico
Energy, Minerals & Natural Resources Department
OIL CONSERVATION DIVISION
1220 South St. Francis Dr.
Santa Fe, NM 87505

RECEIVED

Form C-102

Revised August 1, 2011

Submit one copy to appropriate

District Office

☒ AMENDED REPORT

WELL LOCATION AND ACREAGE DEDICATION PLAT

¹ API Number 30-025-42066		² Pool Code 97927		³ Pool Name WC-025 G-07 S213330F; BONE SPRING	
⁴ Property Code		⁵ Property Name ABE STATE		⁶ Well Number 2H	
⁷ OGRID No. 160825		⁸ Operator Name B.C. OPERATING, INC.		⁹ Elevation 3719'	

¹⁰ Surface Location

UL or lot no.	Section	Township	Range	Lot Idn	Feet from the	North/South line	Feet from the	East/West line	County
P	29	T21S	R33E		185'	SOUTH	360'	EAST	LEA

¹¹ Bottom Hole Location If Different From Surface

UL or lot no.	Section	Township	Range	Lot Idn	Feet from the	North/South line	Feet from the	East/West line	County
A	29	T21S	R33E		240'	NORTH	360'	EAST	LEA

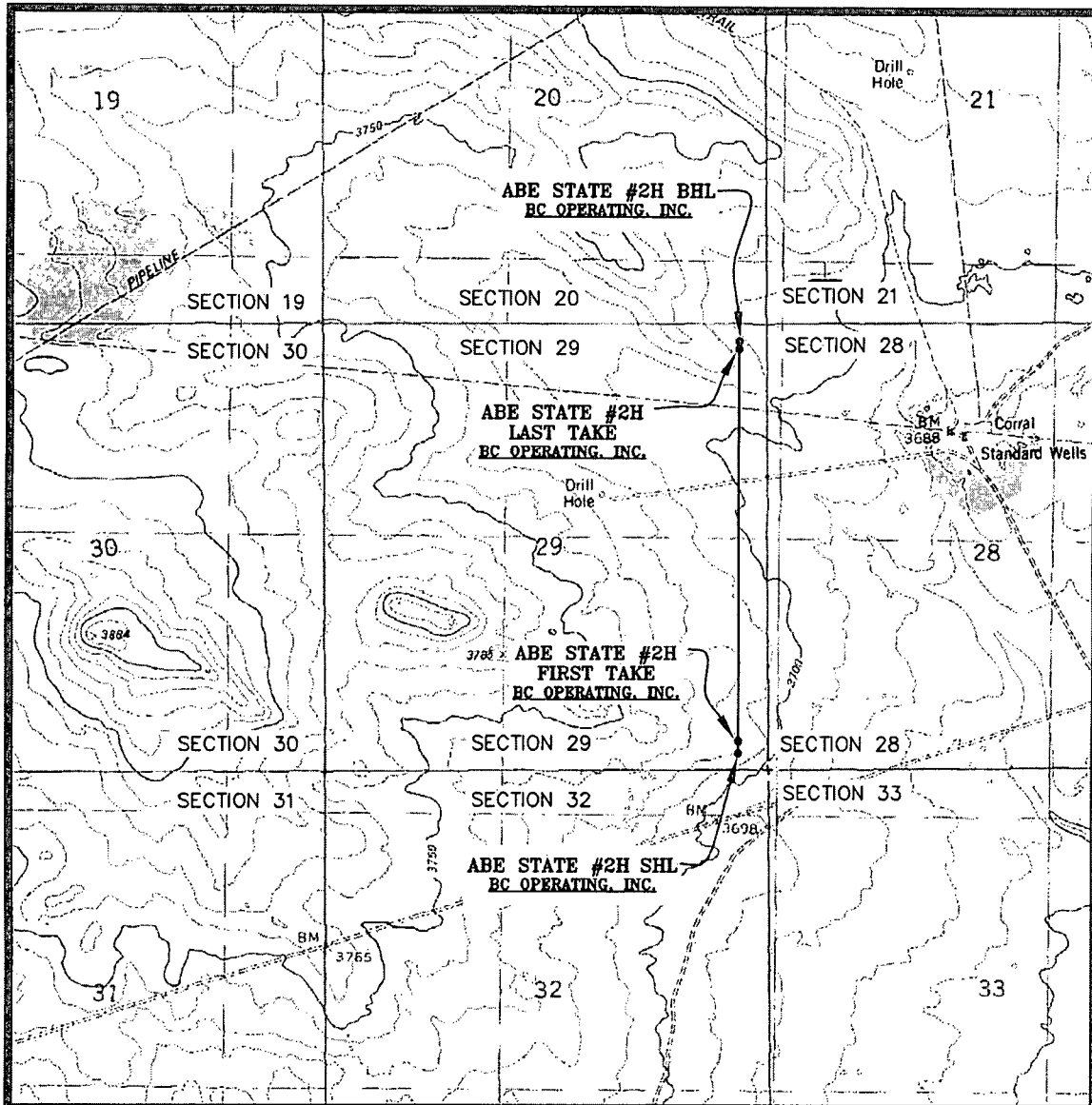
¹² Dedicated Acres 160.00	¹³ Joint or Infill	¹⁴ Consolidation Code	¹⁵ Order No.
---	-------------------------------	----------------------------------	-------------------------

No allowable will be assigned to this completion until all interests have been consolidated or a non-standard unit has been approved by the division.

<p>BOTTOM HOLE LOCATION NAD 83, SPCS NM EAST X:771519.74' / Y:530595.46' LAT:32.45645962N / LON:103.58706959W</p> <p>NAD 27, SPCS NM EAST X:730337.73' / Y:530534.23' LAT:32.45633644N / LON:103.58658260W</p> <p>LAST TAKE POINT NAD 83, SPCS NM EAST X:771519.81' / Y:530505.78' LAT:32.45621312N / LON:103.58707142W</p> <p>NAD 27, SPCS NM EAST X:730337.80' / Y:530444.56' LAT:32.45608994N / LON:103.58658444W</p> <p>FIRST TAKE POINT NAD 83, SPCS NM EAST X:771523.06' / Y:525741.79' LAT:32.4435179N / LON:103.5871655W</p> <p>NAD 27, SPCS NM EAST X:730340.94' / Y:525825.86' LAT:32.44339466N / LON:103.58667895W</p> <p>SURFACE HOLE LOCATION NAD 83, SPCS NM EAST X:771519.92' / Y:525741.79' LAT:32.44311895N / LON:103.58717896W</p> <p>NAD 27, SPCS NM EAST X:730337.80' / Y:525680.70' LAT:32.44299574N / LON:103.58669241W</p> <p>CORNER COORDINATES NAD 83, SPCS NM EAST A - Y: 530831.01' / X: 770562.68' B - Y: 530837.59' / X: 771881.73' C - Y: 525558.73' / X: 771881.45' D - Y: 525552.16' / X: 770562.41' NAD 27, SPCS NM EAST A - Y: 530769.78' / X: 729380.69' B - Y: 530776.35' / X: 730699.73' C - Y: 525497.65' / X: 730699.32' D - Y: 525491.08' / X: 729380.29'</p>	<p>Diagram showing well location and acreage dedication plat. The diagram includes a grid with sections 29, 30, and 31. The well location is marked with a dot and labeled 'WELL LOCATION'. The producing area is marked with a dashed line and labeled 'PRODUCING AREA'. The diagram also shows the 'LAST TAKE POINT' and 'FIRST TAKE POINT' locations. Dimensions are provided for various distances: 330', 360', 240', 185', 359', and 330'.</p>	<p>" OPERATOR CERTIFICATION I hereby certify that the information contained herein is true and complete to the best of my knowledge and belief, and that this organization either owns a working interest or unleased mineral interest in the land including the proposed bottom hole location or has a right to drill this well at this location pursuant to a contract with an owner of such a mineral or working interest, or to a voluntary pooling agreement or a compulsory pooling order heretofore entered by the division.</p> <p><i>Pam Stevens</i> 8/27/14 Signature Date</p> <p>Pam Stevens Printed Name</p> <p>pstevens@bcoperating.com E-mail Address</p> <p>"SURVEYOR CERTIFICATION I hereby certify that the well location shown on this plat was plotted from field notes of actual surveys made by me or under my supervision, and that the same is true and correct to the best of my belief.</p> <p>AUGUST 27, 2014 Date of Survey</p> <p><i>Lloyd P. Short</i> Signature and Seal of Professional Surveyor</p> <p>LLOYD P. SHORT 21653 Certificate Number</p>
--	---	--

FEB 24 2015

LOCATION VERIFICATION MAP

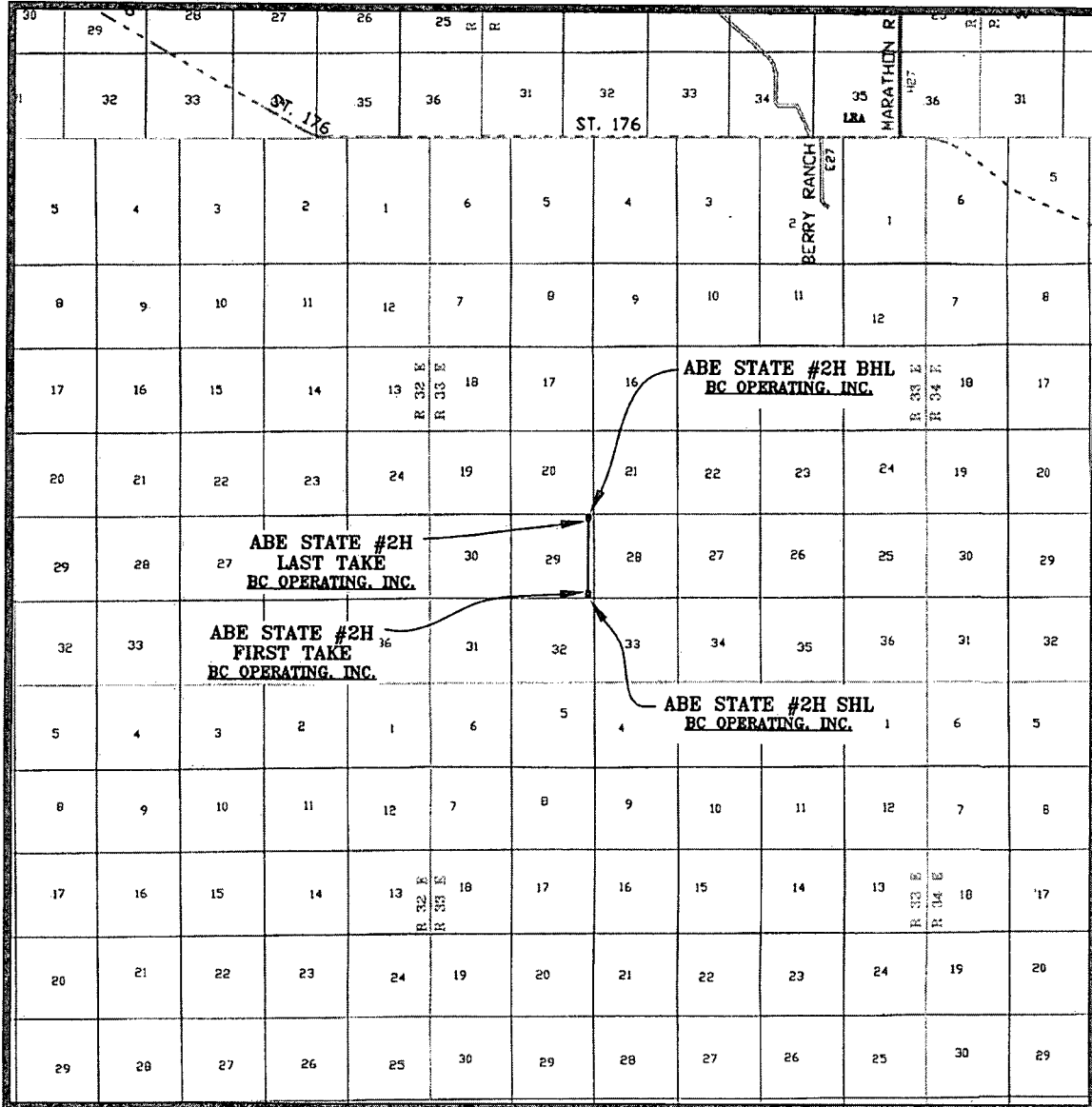


SEC. 29 TWP. 21-S RGE. 33-E
 SURVEY: N.M.P.M.
 COUNTY: LEA
 DESCRIPTION: 185' FSL & 360' FEL
 ELEVATION: 3719'
 OPERATOR: B.C. OPERATING, INC.
 LEASE: ABE STATE
 U.S.G.S. TOPOGRAPHIC MAP: GRAMA RIDGE, NW, N.M.

SCALE: 1" = 2000'
 CONTOUR INTERVAL = 5'

PREPARED BY:
 R-SQUARED GLOBAL, LLC
 1309 LOUISVILLE AVENUE, MONROE, LA 71201
 318-323-6900 OFFICE
 JOB No. R3337

VICINITY MAP



SEC. 29 TWP. 21-S RGE. 33-E

SURVEY: N.M.P.M.

COUNTY: LEA

DESCRIPTION: 185' FSL & 360' FEL

ELEVATION: 3719'

OPERATOR: B.C. OPERATING, INC.

LEASE: ABE STATE

U.S.G.S. TOPOGRAPHIC MAP: GRAMA RIDGE, NW, N.M.

SCALE: 1" = 2 MILES

PREPARED BY:
R-SQUARED GLOBAL, LLC
1309 LOUISVILLE AVENUE, MONROE, LA 71201
318-323-6900 OFFICE
JOB No. R3337