

DISTRICT I
1625 N. French Dr., Hobbs, NM 88240
Phone: (575) 393-6161 Fax: (575) 393-0720

DISTRICT II
811 S. First St., Artesia, NM 88210
Phone: (575) 748-1283 Fax: (575) 748-0720

DISTRICT III
1000 Rio Brazos Road, Aztec, NM 87410
Phone: (505) 334-6178 Fax: (505) 334-6179

DISTRICT IV
1220 S. St. Francis Dr., Santa Fe, NM 87505
Phone: (505) 476-3460 Fax: (505) 476-3462

HOBBS
MAR 02 2015
RECEIVED

State of New Mexico
Energy, Minerals & Natural Resources Department
OIL CONSERVATION DIVISION
1220 South St. Francis Dr.
Santa Fe, New Mexico 87505

Form C-102
Revised August 1, 2011
Submit one copy to appropriate
District Office

AMENDED REPORT

WELL LOCATION AND ACREAGE DEDICATION PLAT

API Number 30-025-42414	Pool Code 97900	Pool Name Red Hills; Upper Bone Spring Shale
Property Code 314180	Property Name Rojo 7811 JV-P Federal Com	Well Number 2H
OGRID No. 260297	Operator Name BTA OIL PRODUCERS, LLC	Elevation 3345'

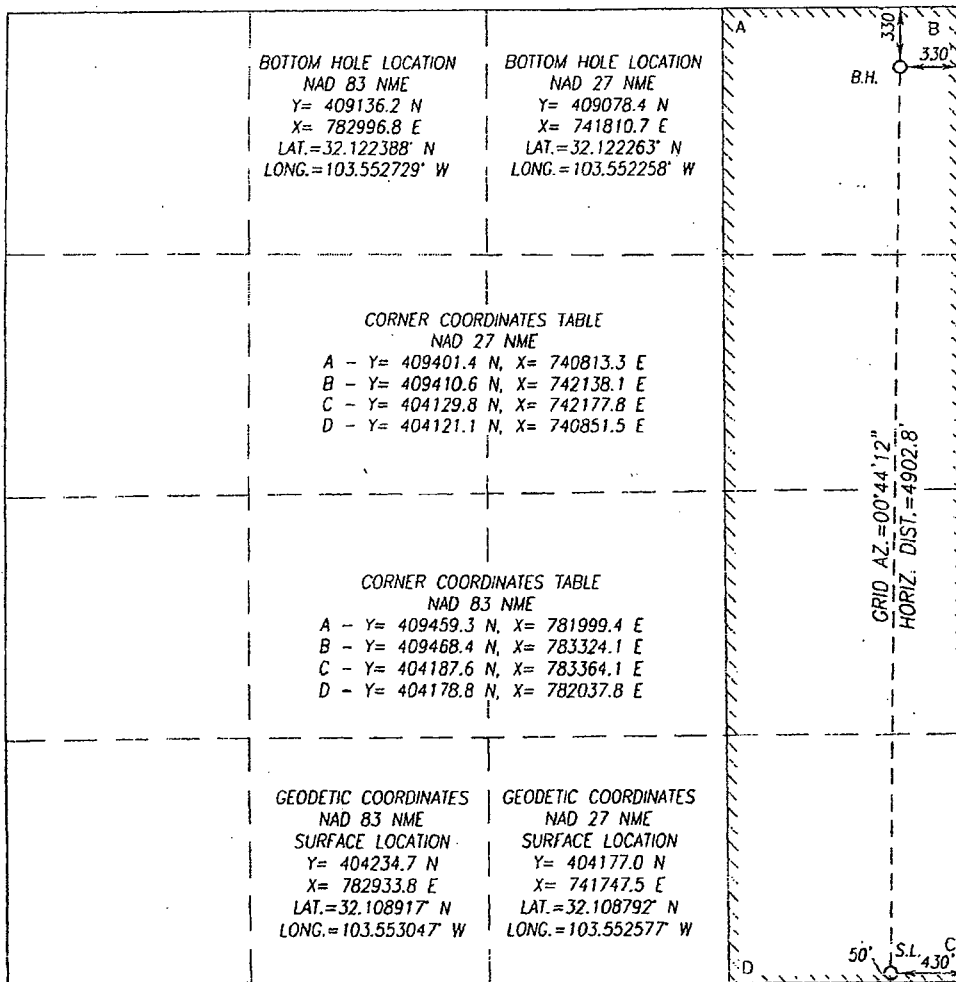
Surface Location

UL or lot No.	Section	Township	Range	Lot Idn	Feet from the	North/South line	Feet from the	East/West line	County
P	22	25-S	33-E		50	SOUTH	430	EAST	LEA

Bottom Hole Location If Different From Surface

UL or lot No.	Section	Township	Range	Lot Idn	Feet from the	North/South line	Feet from the	East/West line	County
A	22	25-S	33-E		330	NORTH	330	EAST	LEA
Dedicated Acres 160	Joint or Infill	Consolidation Code	Order No.						

NO ALLOWABLE WILL BE ASSIGNED TO THIS COMPLETION UNTIL ALL INTERESTS HAVE BEEN CONSOLIDATED OR A NON-STANDARD UNIT HAS BEEN APPROVED BY THE DIVISION



OPERATOR CERTIFICATION
I hereby certify that the information herein is true and complete to the best of my knowledge and belief, and that this organization either owns a working interest or unleased mineral interest in the land including the proposed bottom hole location or has a right to drill this well at this location pursuant to a contract with an owner of such mineral or working interest, or to a voluntary pooling agreement or a compulsory pooling order heretofore entered by the division.

Pam Inskeep 2/23/2015
Signature Date

Pam Inskeep, Reg. Administrator
Printed Name

pinskeep@btaoil.com
E-mail Address

SURVEYOR CERTIFICATION
I hereby certify that the well location shown on this plat was plotted from field notes of actual surveys made by me or under my supervision, and that the same is true and correct to the best of my belief.

OCTOBER 15, 2012
Date of Survey

Ronald J. Eidson
Signature of Professional Surveyor

NEW MEXICO
3239
REGISTERED SURVEYOR

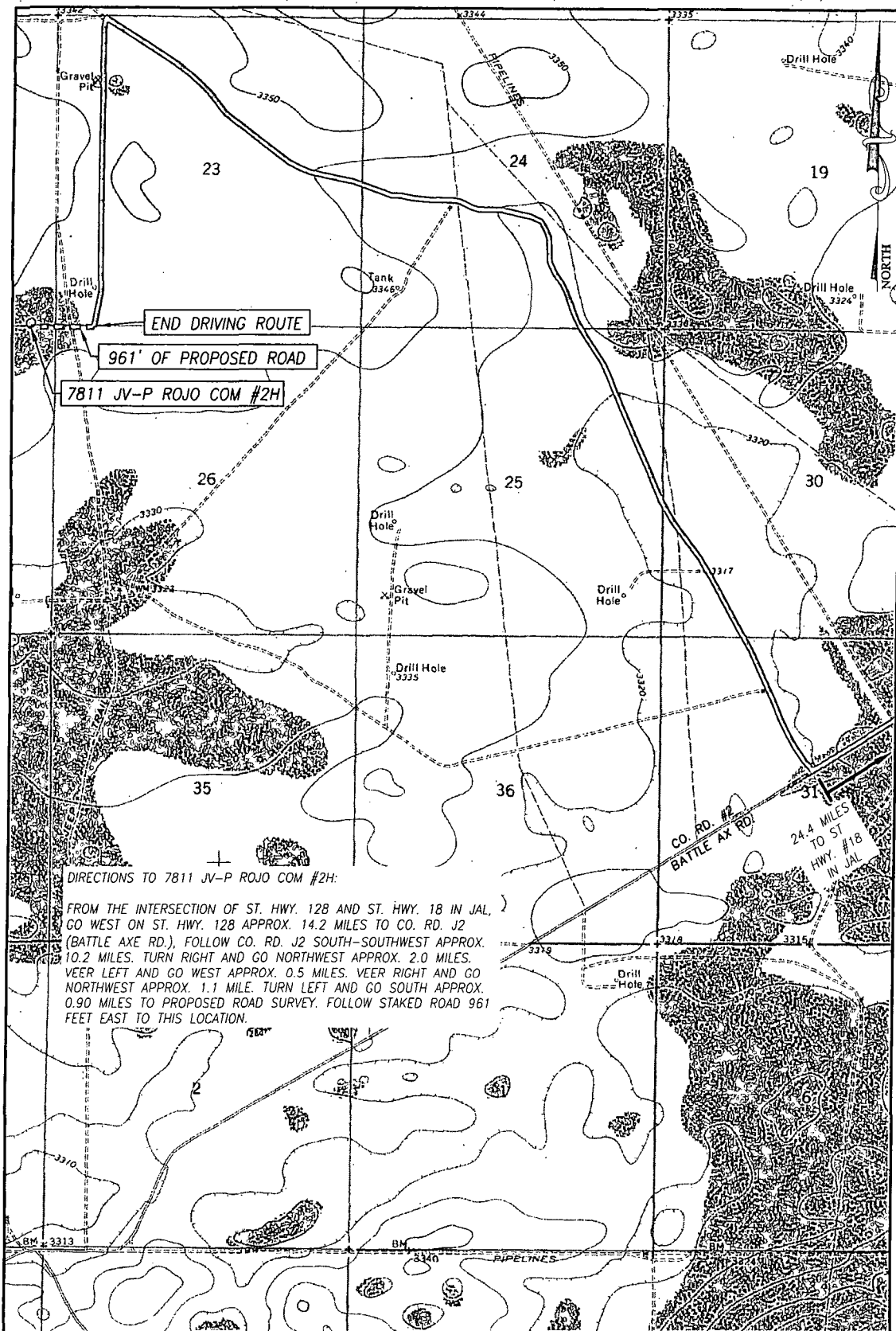
Ronald J. Eidson 02/12/2015
Certificate Number 3239

LSL REL.W.O. 12.11.1696 JWSC W.O. 13.13.0243

** Amended*

MAR 04 2015

TOPOGRAPHIC AND ACCESS ROAD MAP



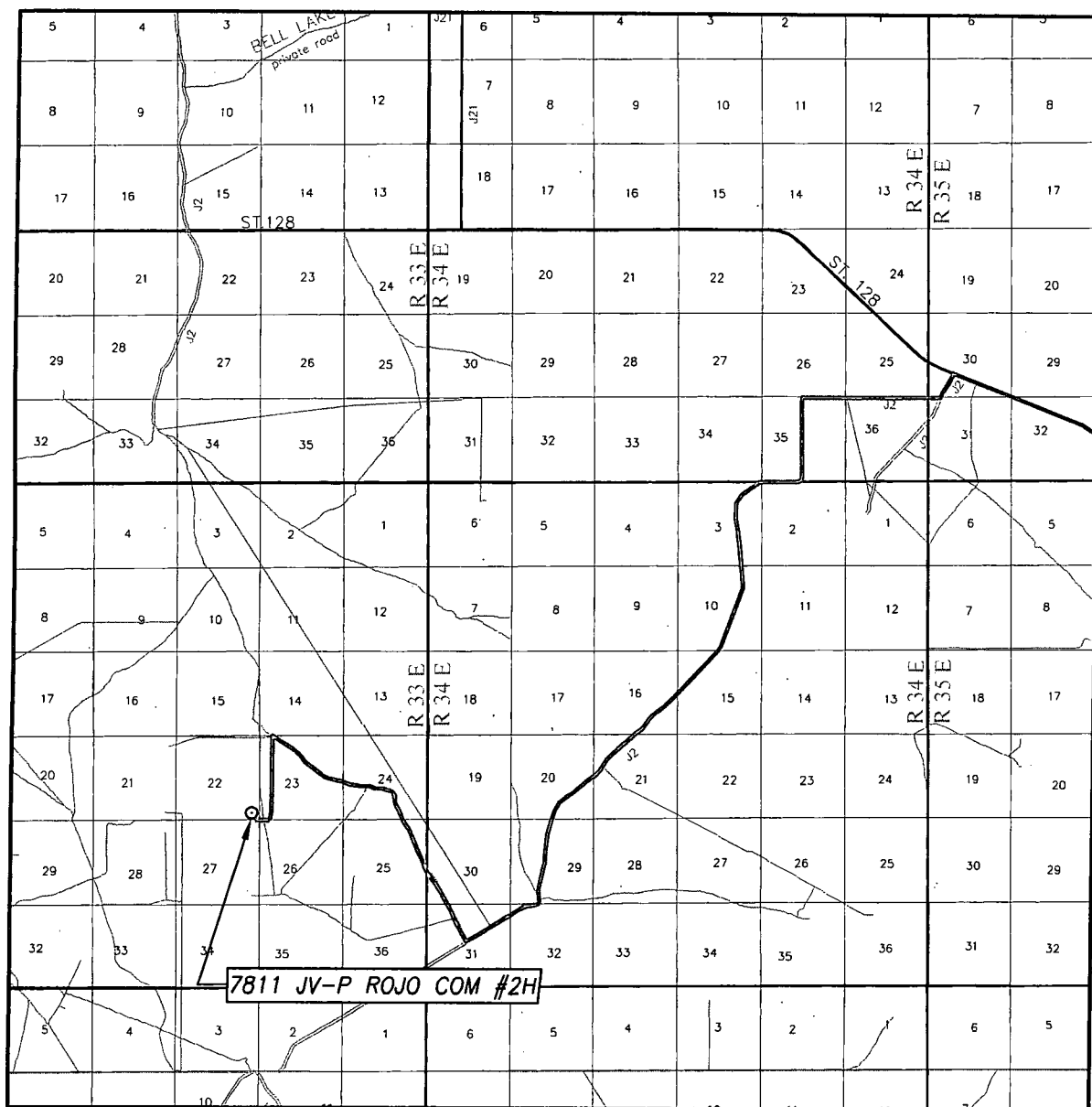
SEC. 22 TWP. 25-S RGE. 33-E
 COUNTY EDDY STATE NEW MEXICO
 DESCRIPTION 50' FSL & 1675' FEL
 ELEVATION 3345'
 OPERATOR BTA OIL PRODUCERS, LLC
 LEASE 7811 JV-P ROJO COM
 U.S.G.S. TOPOGRAPHIC MAP
 SPRING LAKE, N.M. SURVEY N.M.P.M.

SCALE: 1" = 2000'

CONTOUR INTERVAL:
 PADUCA BREAKS EAST, N.M. - 10'

PROVIDING SURVEYING SERVICES
 SINCE 1946
JOHN WEST SURVEYING COMPANY
 412 N. DAL PASO HOBBS, N.M. 88240
 (575) 393-3117 www.jwsc.biz
 TBPLS# 10021000

VICINITY MAP



SCALE: 1" = 2 MILES

DRIVING ROUTE: SEE TOPOGRAPHICAL & ACCESS ROAD

SEC. 22 TWP. 25-S RGE. 33-E

SURVEY N.M.P.M.

COUNTY LEA STATE NEW MEXICO

DESCRIPTION 50' FSL & 430' FEL

ELEVATION 3395'

OPERATOR BTA OIL PRODUCERS, LLC

LEASE 7811 JV-P ROJO COM

PROVIDING SURVEYING SERVICES
SINCE 1946

JOHN WEST SURVEYING COMPANY

412 N. DAL PASO HOBBS, N.M. 88240
(575) 393-3117 www.jwsc.biz
TBPLS# 10021000