

Submit 1 Copy To Appropriate District Office
District I - (575) 393-6161
1625 N. French Dr., Hobbs, NM 88240
District II - (575) 748-1283
811 S. First St., Artesia, NM 88210
District III - (505) 334-6178
1000 Rio Brazos Rd., Aztec, NM 87410
District IV - (505) 476-3460
1220 S. St. Francis Dr., Santa Fe, NM 87505

State of New Mexico
Energy, Minerals and Natural Resources

Form C-103
Revised August 1, 2011

OIL CONSERVATION DIVISION
1220 South St. Francis Dr.
Santa Fe, NM 87505

WELL API NO. 30-025-38576
5. Indicate Type of Lease STATE <input checked="" type="checkbox"/> FEE <input type="checkbox"/>
6. State Oil & Gas Lease No. V07530-0001
7. Lease Name or Unit Agreement Name Linam AGI
8. Well Number 1
9. OGRID Number 36785
10. Pool name or Wildcat Wildcat

SUNDRY NOTICES AND REPORTS ON WELLS
(DO NOT USE THIS FORM FOR PROPOSALS TO DRILL OR TO DEEPEN OR PLUG BACK TO A DIFFERENT RESERVOIR. USE "APPLICATION FOR PERMIT" (FORM C-101) FOR SUCH PROPOSALS.)

1. Type of Well: Oil Well ☐ Gas Well ☒ Other ☐

2. Name of Operator
DCP Midstream LP

3. Address of Operator
370 17th Street, Suite 2500, Denver CO 80202

4. Well Location
Unit Letter K; 1980 feet from the South line and 1980 feet from the West line
Section 30 Township 18S Range 37E NMPM County Lea

11. Elevation (Show whether DR, RKB, RT, GR, etc.)
3736 GR

12. Check Appropriate Box to Indicate Nature of Notice, Report or Other Data

NOTICE OF INTENTION TO:

PERFORM REMEDIAL WORK ☐ PLUG AND ABANDON ☐
TEMPORARILY ABANDON ☐ CHANGE PLANS ☐
PULL OR ALTER CASING ☐ MULTIPLE COMPL ☐
DOWNHOLE COMMINGLE ☐

SUBSEQUENT REPORT OF:

REMEDIAL WORK ☐ ALTERING CASING ☐
COMMENCE DRILLING OPNS. ☐ P AND A ☐
CASING/CEMENT JOB ☐

OTHER: ☐

OTHER: Monthly Report pursuant to Workover C-103 ☒

13. Describe proposed or completed operations. (Clearly state all pertinent details, and give pertinent dates, including estimated date of starting any proposed work). SEE RULE 19.15.7.14 NMAC. For Multiple Completions: Attach wellbore diagram of proposed completion or recompletion.

Monthly Report for the Month ending January 31, 2015 (1/1/15-1/31/15) Pursuant to Workover C-103 for Linam AGI #1

This is the thirty-third monthly submittal of data as agreed to between DCP and OCD relative to injection pressure, TAG temperature and casing annulus pressure. The injection conditions for the month of January continue to remain stable and reflect the variations in inlet flow rates to the plant and corresponding TAG injection rates. In addition, several short term variations in flow rate, TAG injection pressure are attributable to mechanical issues experienced at the plant during the month of January. However, the mechanical issues were addressed within hours and normal operating conditions were restored. The correlative response of the annular pressure and the stable differential pressure demonstrate that the well continues to have good integrity. Average TAG Injection Pressure: 1,631 psig, Annulus Pressure: 180 psig, Pressure Differential: 1451 psig, TAG Temperature: 125°F and TAG injection rate: 151,065 scf/hr. These average values are shown as lines on the pressure and flow rate graph. All these data continue to confirm the integrity of the tubing which was replaced in 2012 which was further verified by the successful completion of the most recent biannual MIT test conducted in September, 2014. The Linam AGI#1 continues to serve as a safe, effective and environmentally-friendly system to dispose of Class II wastes consisting of H₂S and CO₂.

I hereby certify that the information above is true and complete to the best of my knowledge and belief.

SIGNATURE [Signature] TITLE Consultant to DCP Midstream/ Geolex, Inc. DATE 2/8/2015
Type or print name Alberto A. Gutierrez, RG E-mail address: aag@geolex.com PHONE: 505-842-8000

For State Use Only

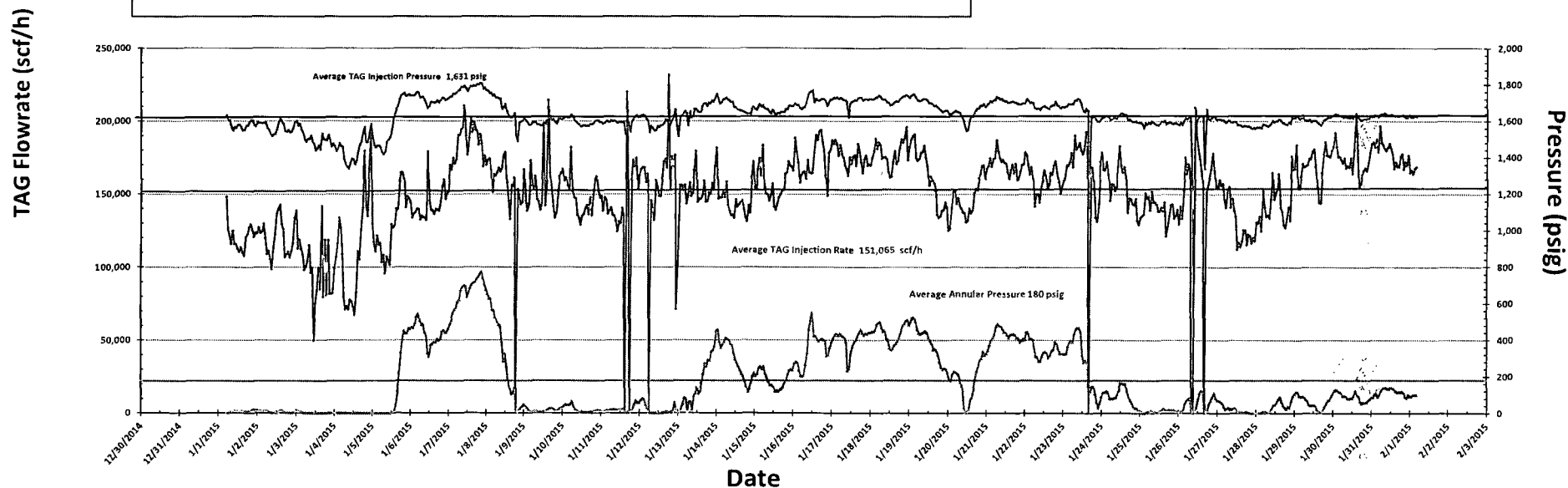
APPROVED BY: Bill Senanah TITLE Staff Manager DATE 3/6/2015
Conditions of Approval (if any):

MAR 10 2015

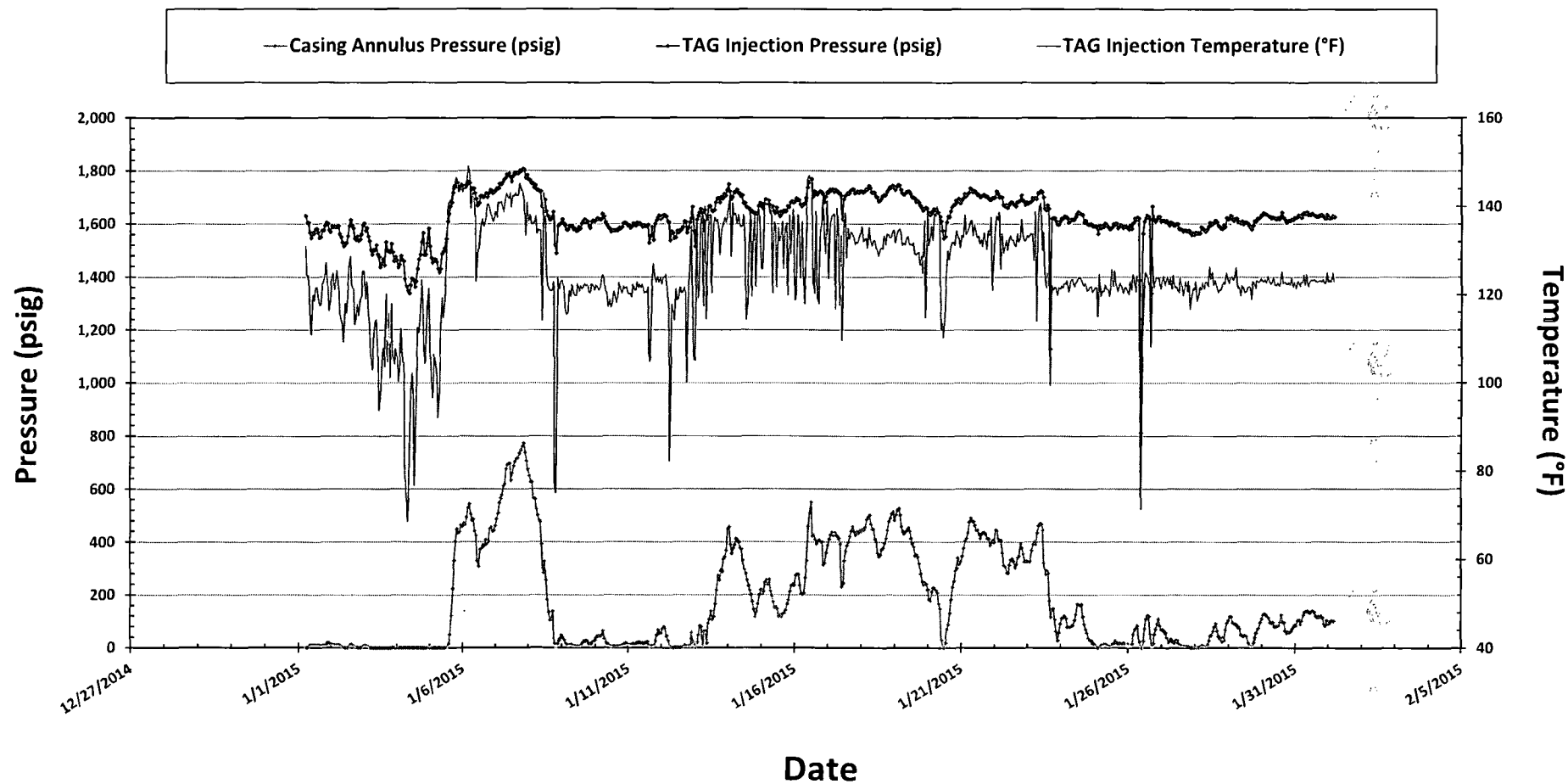
Linam AGI #1 Injection and Casing Annulus Pressure and TAG Injection Flowrate 1/1/2015 to 1/31/2015

Fluctuations in annular pressure observed during the month of January 2015 continue to represent the correlative behavior of the annular pressure with the flowrate and injection pressure and temperature. Drops in inlet flow rates are observed on 1/9, 1/11-13, 1/24 and 1/26 due to inlet volume variations, various mechanical issues and other events at the plant, but regular operating conditions were generally restored within hours. This month saw more than usual variations in inlet flows to the plant which are largely responsible for the observed variations in injection and annular pressure. The correlative response of the annular pressure and the stable differential pressure demonstrate that the well continues to have good integrity. The three lines on this graph show the average injection pressure, injection rate and annular pressure and demonstrate the overall correlation of injection rate and pressure with annular pressure. The remaining primary factor influencing annular pressure (TAG injection temperature) is shown on the next graph of pressure and temperature trends under operating conditions.

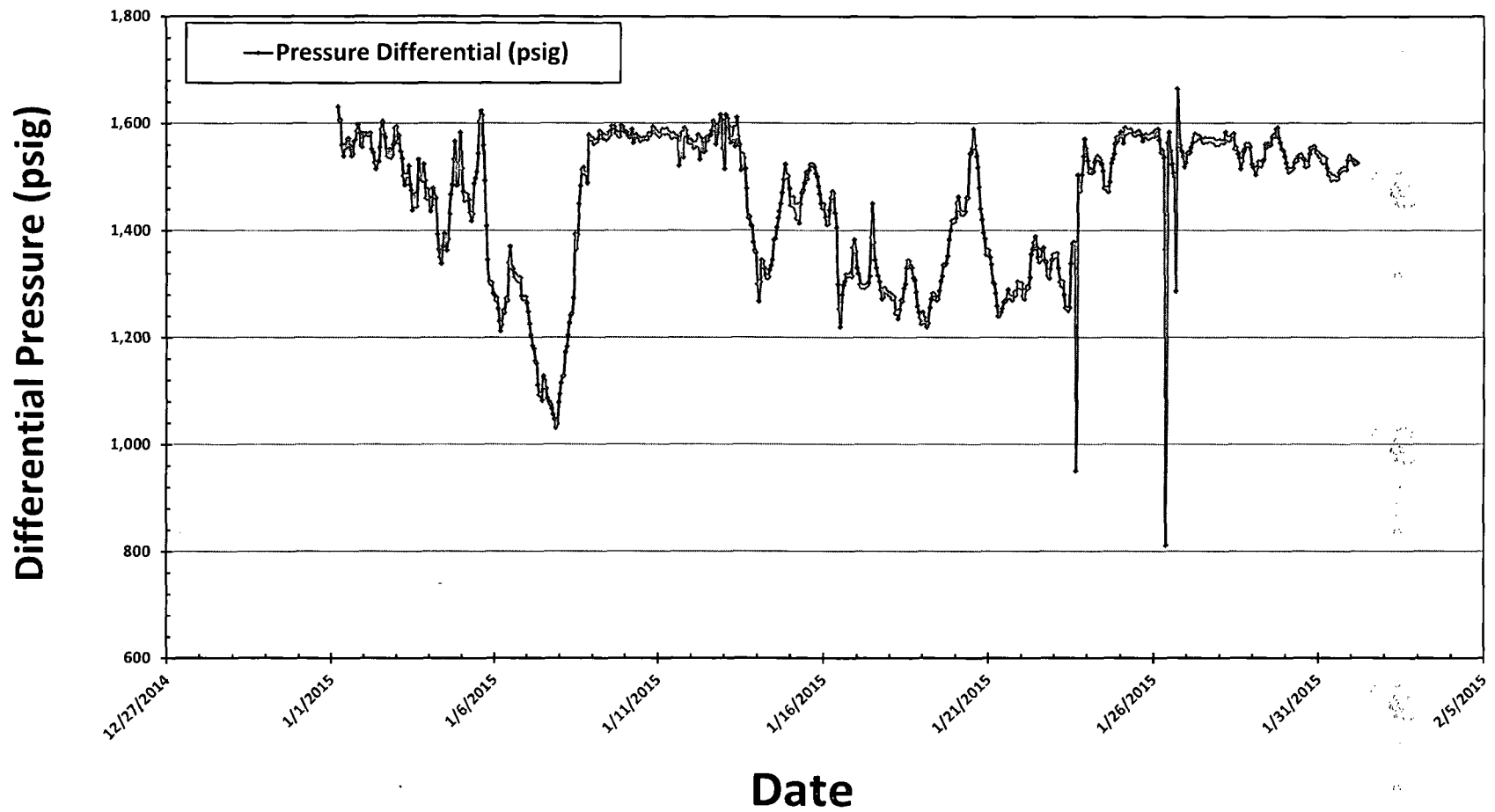
— TAG Injection Flowrate (scf/h) — TAG Injection Pressure (psig) — Casing Annulus Pressure (psig)



Linam AGI #1 TAG Injection Pressure, Casing Annulus Pressure and TAG Injection Temperature 1/1/2015 to 1/31/2015



Linam AGI #1 TAG Injection Pressure and Casing Annular Pressure Differential (psig) 1/1/2015 to 1/31/2015





DCP Midstream
1625 West Marland St
Ofc. (575) 397-5552
Fax (575) 397-5598

Electronic MAIL:

February 9, 2015

Mr. Paul Kautz
Acting Director
New Mexico Oil Conservation Division
Hobbs Office – District 1
1625 North French Dr.
Hobbs, NM 88240

HOBBSOCD

FEB 19 2015

RECEIVED

Re: January C-103 monthly report, Linam AGI #1

Dear Mr. Kautz:

This letter serves as DCP Midstream, LP's (DCPM) response to file a monthly C-103 report with the OCD. DCPM will continue to operate as per our original approved injection order as modified by the C-103 approved on 5/3/2012 which requires monthly reporting and MIT every 6 months.

If you have any questions about the information included in this submittal, please feel free to contact me at 575-397-5597 or via email at rgortega@dcpmidstream.com.

Sincerely,

Russell G. Ortega
Asset Director II, SENM

RO; de

cc: Will Jones, New Mexico OCD
David Griesinger, DCPM – Midland
Jacob Strickland, DCPM – Hobbs
Quentin Mendenhall, DCPM – Midland
Paul Tourangeau, DCPM – Denver
Jonas Figueroa, DCPM – Midland
Chris Root, DCPM – Denver
Alberto Gutierrez, Geolex – Albuquerque