

Submit 3 Copies To Appropriate District  
Office  
District I  
1625 N. French Dr., Hobbs, NM 87240  
District II  
1301 W. Grand Ave., Artesia, NM 88210  
District III  
1000 Rio Brazos Rd., Aztec, NM 87410  
District IV  
1220 S. St. Francis Dr., Santa Fe, NM  
87505

State of New Mexico  
Energy, Minerals and Natural Resources

Form C-103

June 19, 2008

OIL CONSERVATION DIVISION  
1220 South St. Francis Dr.  
Santa Fe, NM 87505

WELL API NO. <b>30-025-33175</b>
5. Indicate Type of Lease STATE <input type="checkbox"/> FEE <input checked="" type="checkbox"/>
6. State Oil & Gas Lease No.
7. Lease Name or Unit Agreement Name: <b>West Lovington Strawn Unit</b>
8. Well Number <b>13</b>
9. OGRID Number <b>162928</b>
10. Pool name or Wildcat <b>Lovington; Strawn, West</b>

<b>SUNDRY NOTICES AND REPORTS ON WELLS</b> (DO NOT USE THIS FORM FOR PROPOSALS TO DRILL OR TO DEEPEN OR PLUG BACK TO A DIFFERENT RESERVOIR. USE "APPLICATION FOR PERMIT" (FORM C-101) FOR SUCH PROPOSALS.)	
1. Type of Well: Oil Well <input checked="" type="checkbox"/> Gas Well <input type="checkbox"/> Other	
2. Name of Operator <b>Energen Resources Corporation</b>	
3. Address of Operator <b>3300 N. A Street, Bldg. 4, Ste. 100, Midland, TX 79705</b>	
4. Well Location Unit Letter <b>O</b> : <b>330</b> feet from the <b>South</b> line and <b>1650</b> feet from the <b>East</b> line Section <b>28</b> Township <b>15S</b> Range <b>35E</b> NMPM County <b>Lea</b>	
11. Elevation (Show whether DR, RKB, RT, GR, etc.) <b>3981' GR</b>	

12. Check Appropriate Box to Indicate Nature of Notice, Report, or Other Data

NOTICE OF INTENTION TO:

PERFORM REMEDIAL WORK ☐ PLUG AND ABANDON ☒  
TEMPORARILY ABANDON ☐ CHANGE PLANS ☐  
PULL OR ALTER CASING ☐ MULTIPLE COMPL ☐  
DOWNHOLE COMMINGLE ☐

OTHER: ☐

SUBSEQUENT REPORT

REMEDIAL WORK ☐  
COMMENCE DRILLING ☐  
CASING ☐  
E-PERMITTING ☐  
P&A NR ☐  
DHC COMP ☐  
CSNG ☐  
TA ☐  
RBDMS ☐  
CHG Loc ☐

13. Describe proposed or completed operations. (Clearly state all pertinent dates, including estimated date of starting any proposed work). SEE RULE 1103. For Multiple Completions: Attach wellbore diagram of proposed completion or recompletion.

**Energen Resources submits notice of intention to P&A the WLSU #13:**

See Attached:

Proposed Plug & Abandon Procedure  
Current Wellbore Diagram  
Proposed Wellbore Diagram

Thank you!

The Oil Conservation Division  
**MUST BE NOTIFIED 24 Hours**  
Prior to the beginning of operations

Spud Date:

Rig Release Date:

I hereby certify that the information above is true and complete to the best of my knowledge and belief.

SIGNATURE Brenda F. Rathjen TITLE Regulatory Analyst DATE 03/04/2015  
Type or print name Brenda F. Rathjen E-mail address: brenda.rathjen@energen.com PHONE 432-688-3323

For State Use Only  
APPROVED BY Mary Brown TITLE Dist. Supervisor DATE 3/11/2015  
Conditions of Approval (if any):

OIL CONSERVATION DIVISION - Hobbs office Must Be Notified  
24 hours prior to the beginning of Plugging Operations.

MAR 12 2015

# ENERGEN RESOURCES CORP

WLSU #13

(formerly Chandler Well No. 1)

LEA COUNTY, NM

Conductor:  
None

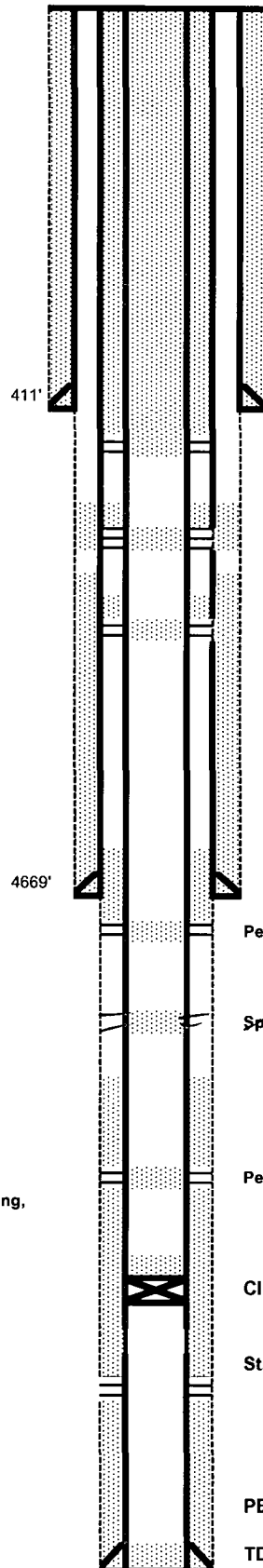
Surface Casing:  
12-3/4" 35# @ 411'  
Cemented w/475 sx  
TOC - 170' - 1" to surf  
w/110 sx

Intermediate Casing:  
8-5/8" 24 & 32# @ 4669'  
w/1050 sx  
Circ 393 sx

Initial TOC for Production Casing,  
8375'

Production Casing:  
4-1/2" 11.6# @ 11,983'  
w/1100 sxs  
TOC by TS - 8375'

## PROPOSED WELLBORE



Perf & Sqz @ 475' w/125 sx  
Circ to Surf

Perf & Sqz @ 1800' w/25 sx  
WOC/Tag

Perf & Sqz @ 3000' w/25 sx  
WOC/Tag

Perf & Sqz @ 4725' w/25 sx  
WOC/Tag

Spot 25 sx @ 7150' WOC/Tag

*Perf & Sqz.*

Perf & Sqz @ 8325' w/25 sx  
WOC/Tag

CIBP @ 11523' (10/14) - Cap w/50' cement

*25 sxs*

Strawn Perfs: 11,581-11,593' (2 JSPF-26 holes)

PBTD: 11,847'

TD: 11,983'

GL Elevation: 3981'

KB Elevation: 3998' - 17' above GL

Location: 330' FSL & 1650' FEL  
Sec 28-T15S-R35E

Spud: 01/19/96

API: 30-025-33175

**WLSU #13**  
West Lovington Strawn Unit  
Lea County, NM

330' FNL and 1650' FWL  
Sec 28, T15S, R35E  
API — 30-025-33175  
Completion Date: 02/1996

Plug & Abandon Procedure

- 1 MIRU Well Service Unit. NDWH, NU BOP.
- 2 ~~Dump~~ <sup>Spot 25 sxs</sup> 50' cement on CIBP at 11,523'.
- 3 Circulate hole to 9.5 ppg MLF
- 4 Perforate and squeeze at 8,325' w/25 sxs cement plug and displace to 8,225'. WOC and tag. *Perf & sqz.*
- 5 ~~Spot~~ 25 sxs cement plug at 7,150' and displace to 7,050'. WOC and tag.
- 6 Perforate and squeeze at 4,725' w/25 sxs cement plug and displace to 4,625'. WOC and tag.
- 7 Perforate and squeeze at 3,000' w/25 sxs cement plug and displace to 2,900'. WOC and tag.
- 8 Perforate and squeeze at 1,800' w/25 sxs cement plug and displace to 1,700'. WOC and tag.
- 9 Perforate and squeeze at 475' w/125 sxs cement plug. Circulate cement to surface.
- 10 Cut off all casing strings at base of cellar or 3' below restored ground level.
- 11 Cover wellbore with metal plate welded in place or with cement cap.
- 12 Erect capped abandonment marker inscribed with well information.
- 13 Cut off dead man anchors and fill in cellar.
- 14 Clean and restore location to natural condition and fulfill any and all regulatory

# ENERGEN RESOURCES CORP

## WLSU #13

(formerly Chandler Well No. 1)

LEA COUNTY, NM

Conductor:  
None

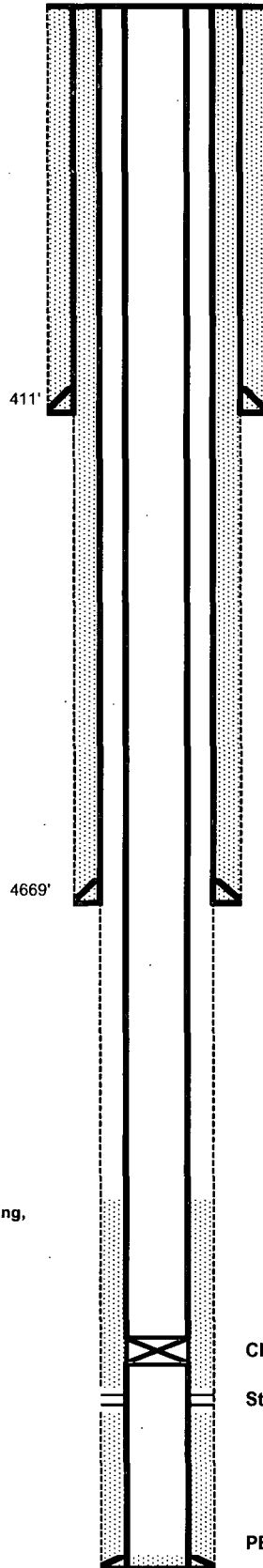
Surface Casing:  
12-3/4" 35# @ 411'  
Cemented w/475 sx  
TOC - 170' - 1" to surf  
w/110 sx

Intermediate Casing:  
8-5/8" 24 & 32# @ 4669'  
w/1050 sx  
Circ 393 sx

Initial TOC for Production Casing,  
8375'

Production Casing:  
4-1/2" 11.6# @ 11,983'  
w/1100 sxs  
TOC by TS - 8375'

### CURRENT WELLBORE



GL Elevation: 3981'

KB Elevation: 3998' -- 17' above GL

Location: 330' FSL & 1650' FEL  
Sec 28-T15S-R35E

Spud: 01/19/96

API: 30-025-33175

CIBP @ 11523' (10/14)

Strawn Perfs: 11,581-11,593' (2 JSPF-26 holes)

PBTB: 11,847'

TD: 11,983'