

HOBBS OCD

MAR 16 2015

District I  
1625 N. French Dr., Hobbs, NM 88240  
Phone: (575) 393-6161 Fax: (575) 393-0720  
District II  
511 S. First St., Artesia, NM 88210  
Phone: (575) 748-1233 Fax: (575) 748-9720  
District III  
1000 Rio Brazos Road, Aztec, NM 87410  
Phone: (505) 334-6178 Fax: (505) 334-6170  
District IV  
1220 S. St. Francis Dr., Santa Fe, NM 87505  
Phone: (505) 476-3460 Fax: (505) 476-3462

State of New Mexico  
Energy, Minerals & Natural Resources Department  
OIL CONSERVATION DIVISION  
1220 South St. Francis Dr.  
Santa Fe, NM 87505

RECEIVED

Form C-102

Revised August 1, 2011

Submit one copy to appropriate

District Office

☐ AMENDED REPORT

## WELL LOCATION AND ACREAGE DEDICATION PLAT

<sup>1</sup> API Number <b>30-025-42476</b>	<sup>2</sup> Pool Code <b>97899</b>	<sup>3</sup> Pool Name <b>WC-025 G-06 5253206M; BS</b>
<sup>4</sup> Property Code <b>38384</b>	<sup>5</sup> Property Name <b>TRIONYX 6 FEDERAL</b>	
<sup>7</sup> GRID No. <b>6137</b>	<sup>8</sup> Operator Name <b>DEVON ENERGY PRODUCTION COMPANY, L.P.</b>	<sup>6</sup> Well Number <b>9H</b>
		<sup>9</sup> Elevation <b>3441.0</b>

<sup>10</sup> Surface Location

UL or lot no.	Section	Township	Range	Lot Idn	Feet from the	North/South line	Feet from the	East/West line	County
7	6	25 S	32 E		200	SOUTH	1300	WEST	LEA

<sup>11</sup> Bottom Hole Location If Different From Surface

UL or lot no.	Section	Township	Range	Lot Idn	Feet from the	North/South line	Feet from the	East/West line	County
4	6	25 S	32 E		330	NORTH	660	WEST	LEA

<sup>12</sup> Dedicated Acres	<sup>13</sup> Joint or Infill	<sup>14</sup> Consolidation Code	<sup>15</sup> Order No.
159.7 ac			

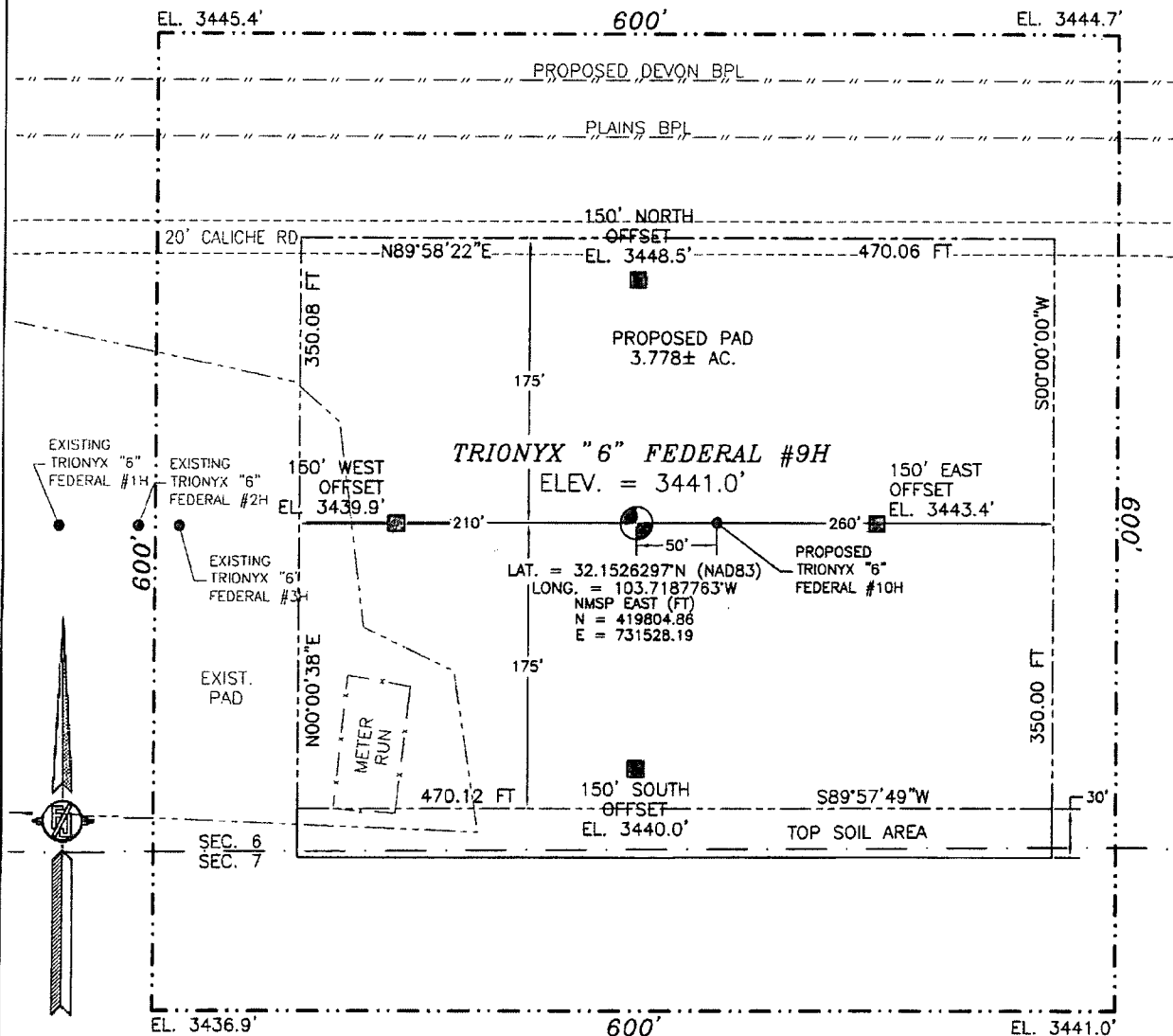
No allowable will be assigned to this completion until all interests have been consolidated or a non-standard unit has been approved by the division.

<p>N89°37'30"E 2637.93 FT</p> <p>N89°21'34"E 2659.09 FT</p> <p>660'</p> <p>330'</p> <p>BOTTOM OF HOLE</p> <p>LOT 4 40.00 ± AC. (SVY) NW CORNER SEC. 6 LAT. = 32.1665814°N LONG. = 103.7229589°W NMSP EAST (FT) N = 424872.91 E = 730205.58</p> <p>LOT 3</p> <p>LOT 2</p> <p>LOT 1</p> <p>Project Area</p> <p>Producing Area</p> <p>NOTE: LATITUDE AND LONGITUDE COORDINATES ARE SHOWN USING THE NORTH AMERICAN DATUM OF 1983 (NAD83). LISTED NEW MEXICO STATE PLANE EAST COORDINATES ARE GRID (NAD83). BASIS OF BEARING AND DISTANCES USED ARE NEW MEXICO STATE PLANE EAST COORDINATES MODIFIED TO THE SURFACE.</p> <p>W/4 CORNER SEC. 6 COMPUTED</p> <p>LOT 5</p> <p>LOT 6</p> <p>SW CORNER SEC. 6 LAT. = 32.1520816°N LONG. = 103.7229763°W NMSP EAST (FT) N = 419598.07 E = 730229.30</p> <p>LOT 7</p> <p>40.28 ± AC. (SVY)</p> <p>1300'</p> <p>S89°42'07"W 2662.90 FT</p> <p>S89°35'57"W 2660.68 FT</p> <p>500'32.45"E 2654.62 FT</p> <p>500'32.45"E 2656.14 FT</p>		<p><sup>17</sup> OPERATOR CERTIFICATION</p> <p>I hereby certify that the information contained herein is true and complete to the best of my knowledge and belief, and that this organization either owns a working interest or unleased mineral interest in the land including the proposed bottom hole location or has a right to drill this well at this location pursuant to a contract with an owner of such a mineral or working interest, or to a voluntary pooling agreement or a compulsory pooling order heretofore entered by the division.</p> <p><i>Trina C. Couch</i> 8/11/14 Signature Date</p> <p>Trina C. Couch, Regulatory Analyst Printed Name</p> <p>trina.couch@dmn.com E-mail Address</p> <p><sup>18</sup> SURVEYOR CERTIFICATION</p> <p>I hereby certify that the well location shown on this plat was plotted from field notes of actual surveys made by me or under my supervision, and that the same is true and correct to the best of my belief.</p> <p>MAY 8, 2013 Date of Survey</p> <p><i>[Signature]</i> Signature and Seal of Professional Surveyor</p> <p>Certificate Number: PLM 153146-1111 G. PLS 12797 SURVEY NO. 1822</p>
---	--	--

MAR 17 2015

SECTION 6, TOWNSHIP 25 SOUTH, RANGE 32 EAST, N.M.P.M.  
LEA COUNTY, STATE OF NEW MEXICO  
SITE MAP

NOTE: LATITUDE AND LONGITUDE COORDINATES ARE SHOWN USING THE NORTH AMERICAN DATUM OF 1983 (NAD83). LISTED NEW MEXICO STATE PLANE EAST COORDINATES ARE GRID (NAD83). BASIS OF BEARING AND DISTANCES USED ARE NEW MEXICO STATE PLANE EAST COORDINATES MODIFIED TO THE SURFACE.



010 50 100 200

SCALE 1" = 100'

DIRECTIONS TO LOCATION

FROM STATE HWY. 128 AND CR#1 (ORLA ROAD) GO SOUTH ON CR. #1 6.2 MILES, TURN RIGHT ON CALICHE ROAD (MONSANTO RD.) AND GO WEST 2.2 MILES, TURN RIGHT AND GO NORTH 0.75 MILES, BEND LEFT AND GO WEST 2.0 MILES, TURN RIGHT AND GO NORTH 1.2 MILES, TURN RIGHT AND GO EAST 1.25 MILES AND LOCATION IS ON THE RIGHT (SOUTH) 175'.

DEVON ENERGY PRODUCTION COMPANY, L.P.

TRIONYX "6" FEDERAL #9H

LOCATED 200 FT. FROM THE SOUTH LINE  
AND 1300 FT. FROM THE WEST LINE OF  
SECTION 6, TOWNSHIP 25 SOUTH,  
RANGE 32 EAST, N.M.P.M.

LEA COUNTY, STATE OF NEW MEXICO

MAY 8, 2013

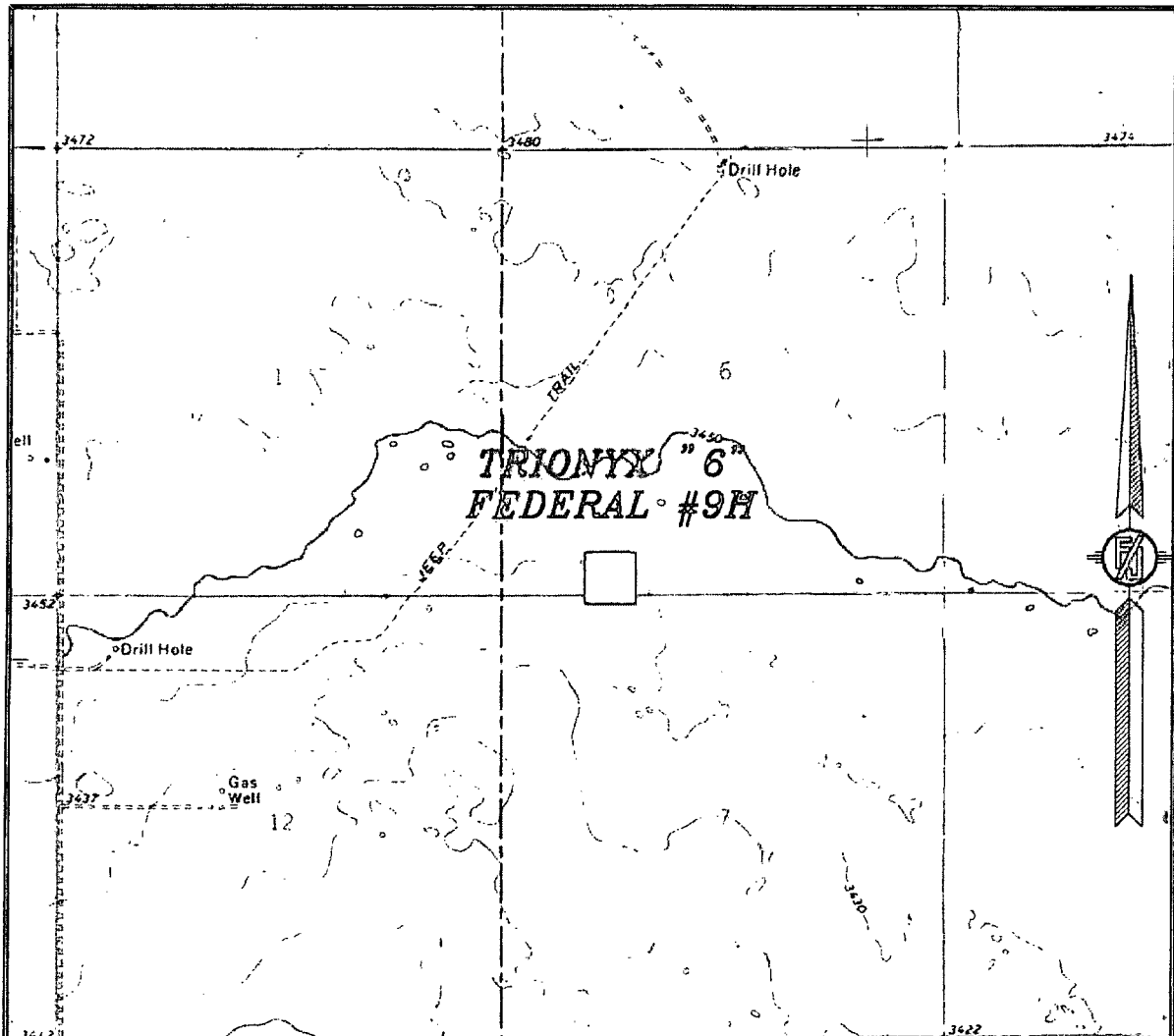
SURVEY NO. 1822

MADRON SURVEYING, INC.

501 SOUTH CANAL  
(575) 234-3341

CARLSBAD, NEW MEXICO

SECTION 6, TOWNSHIP 25 SOUTH, RANGE 32 EAST, N.M.P.M.  
LEA COUNTY, STATE OF NEW MEXICO  
LOCATION VERIFICATION MAP



USGS QUAD MAP:  
PADUCA BREAKS NW

NOT TO SCALE

DEVON ENERGY PRODUCTION COMPANY, L.P.

**TRIONYX "6" FEDERAL #9H**

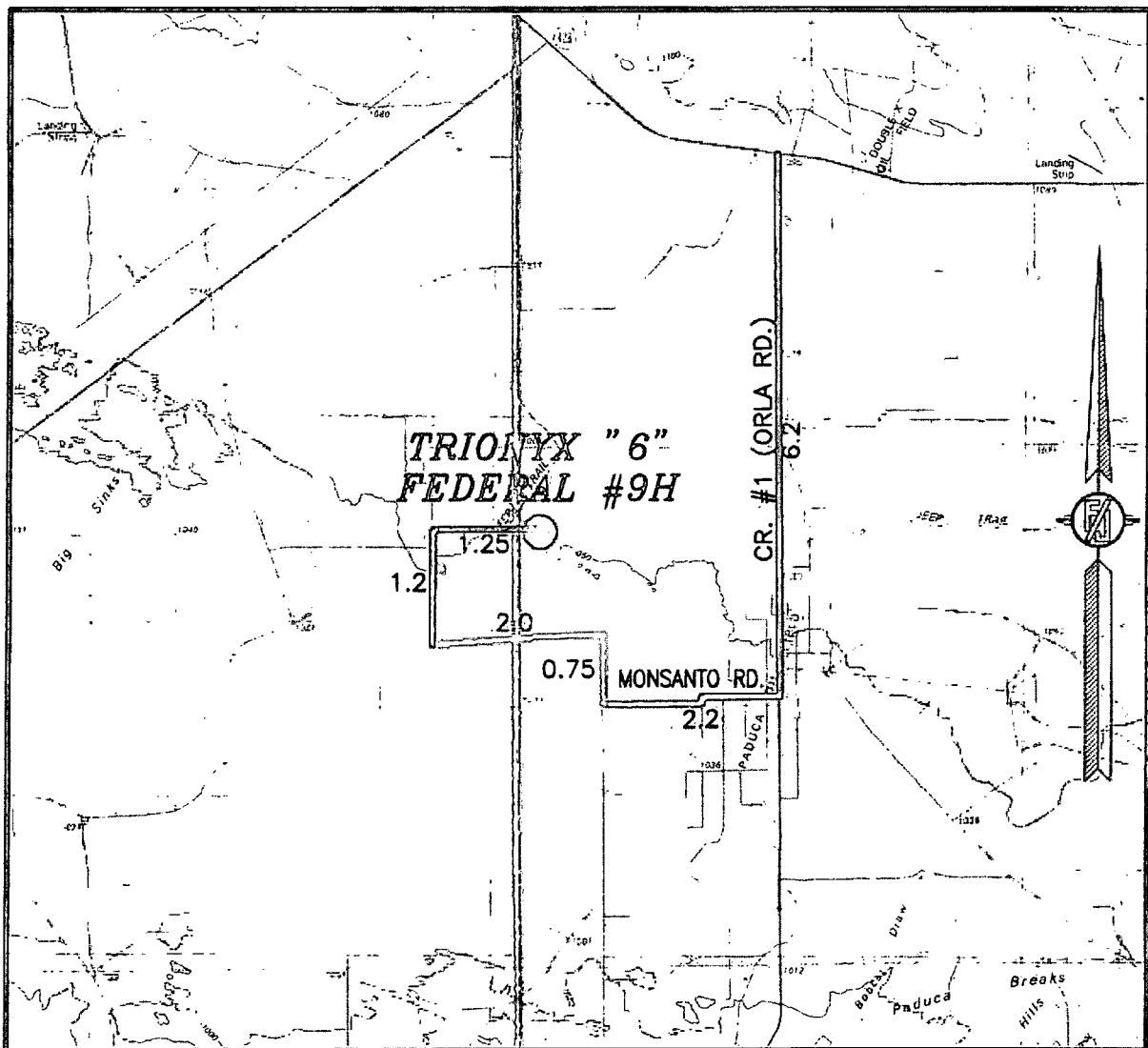
LOCATED 200 FT. FROM THE SOUTH LINE  
AND 1300 FT. FROM THE WEST LINE OF  
SECTION 6, TOWNSHIP 25 SOUTH,  
RANGE 32 EAST, N.M.P.M.  
LEA COUNTY, STATE OF NEW MEXICO

MAY 8, 2013

SURVEY NO. 1822

MADRON SURVEYING, INC. 301 SOUTH CANAL (575) 234-3341 CARLSBAD, NEW MEXICO

SECTION 6, TOWNSHIP 25 SOUTH, RANGE 32 EAST, N.M.P.M.  
LEA COUNTY, STATE OF NEW MEXICO  
VICINITY MAP



DISTANCES SHOWN IN MILES

NOT TO SCALE

DEVON ENERGY PRODUCTION COMPANY, L.P.

**TRIONYX "6" FEDERAL #9H**

LOCATED 200 FT. FROM THE SOUTH LINE  
AND 1300 FT. FROM THE WEST LINE OF  
SECTION 6, TOWNSHIP 25 SOUTH,  
RANGE 32 EAST, N.M.P.M.  
LEA COUNTY, STATE OF NEW MEXICO

**DIRECTIONS TO LOCATION**

FROM STATE HWY. 128 AND CR#1 (ORLA ROAD) GO SOUTH ON CR.  
#1 6.2 MILES, TURN RIGHT ON CALICHE ROAD (MONSANTO RD.) AND  
GO WEST 2.2 MILES, TURN RIGHT AND GO NORTH 0.75 MILES, BEND  
LEFT AND GO WEST 2.0 MILES, TURN RIGHT AND GO NORTH 1.2  
MILES, TURN RIGHT AND GO EAST 1.25 MILES AND LOCATION IS ON  
THE RIGHT (SOUTH) 175'.

MAY 8, 2013

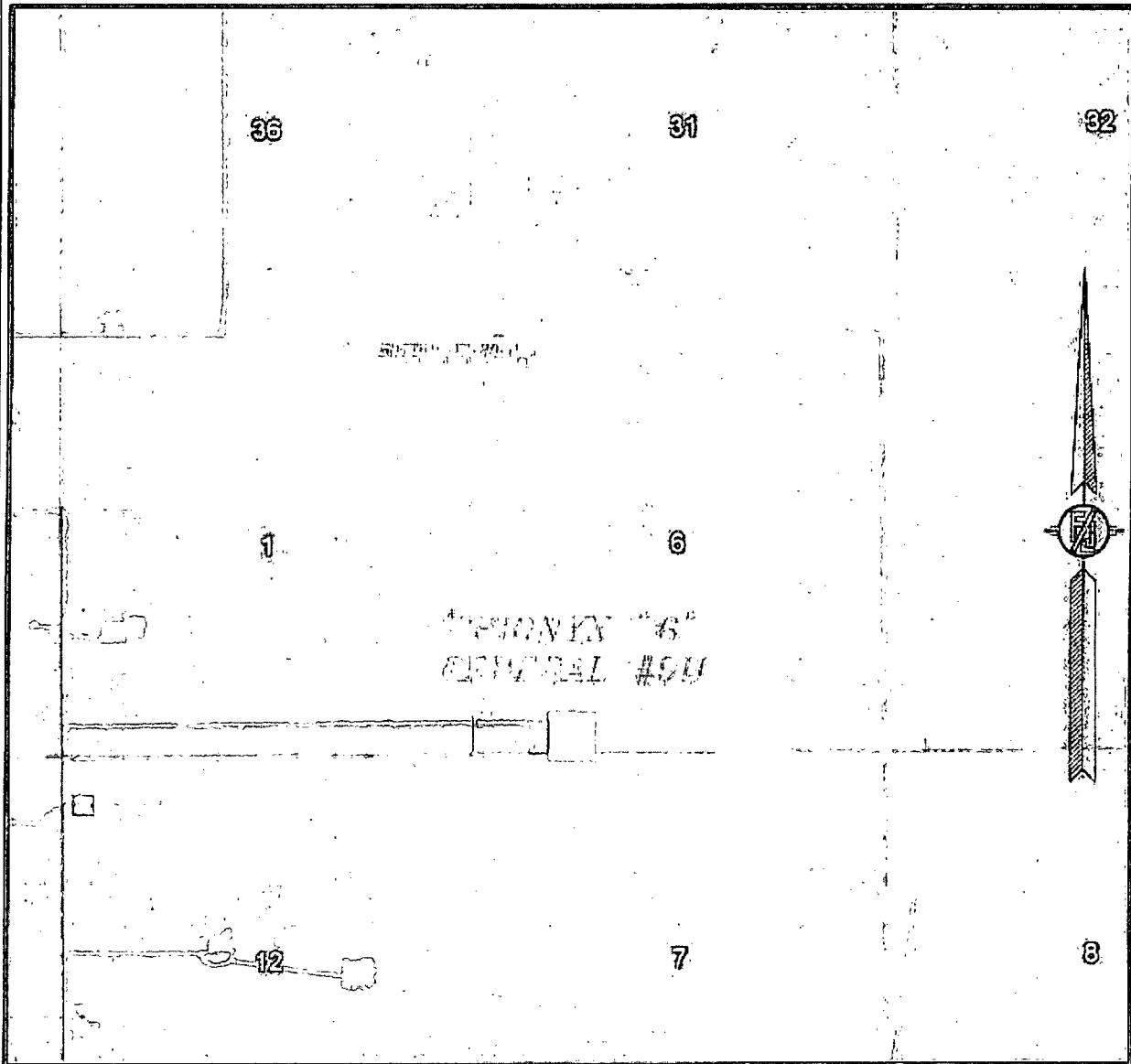
MADRON SURVEYING, INC.

301 SOUTH CANAL  
(575) 234-3341

CARLSBAD, NEW MEXICO

SURVEY NO. 1822

SECTION 6, TOWNSHIP 25 SOUTH, RANGE 32 EAST, N.M.P.M.  
LEA COUNTY, STATE OF NEW MEXICO  
AERIAL PHOTO



NOT TO SCALE  
AERIAL PHOTO:  
GOOGLE EARTH  
MARCH 2012

DEVON ENERGY PRODUCTION COMPANY, L.P.

TRIONYX "6" FEDERAL #9H

LOCATED 200 FT. FROM THE SOUTH LINE  
AND 1300 FT. FROM THE WEST LINE OF  
SECTION 6, TOWNSHIP 25 SOUTH,  
RANGE 32 EAST, N.M.P.M.  
LEA COUNTY, STATE OF NEW MEXICO

MAY 8, 2013

SURVEY NO. 1822

MADRON SURVEYING, INC. 301 SOUTH CANAL (575) 234-3341 CARLSBAD, NEW MEXICO

