

HOBBS OGD

MAR 18 2015

District I  
1625 N. French Dr., Hobbs, NM 88240  
Phone: (575) 393-6161 Fax: (575) 393-0720

District II  
511 S. First St., Artesia, NM 88210  
Phone: (575) 748-1283 Fax: (575) 748-9720

District III  
1000 Rio Brazos Road, Aztec, NM 87410  
Phone: (505) 334-6178 Fax: (505) 334-6170

District IV  
1220 S. St. Francis Dr., Santa Fe, NM 87505  
Phone: (505) 476-3460 Fax: (505) 476-3462

State of New Mexico  
Energy, Minerals & Natural Resources Department  
OIL CONSERVATION DIVISION  
1220 South St. Francis Dr.  
Santa Fe, NM 87505

Form C-102  
Revised August 1, 2011  
Submit one copy to appropriate  
District Office

☐ AMENDED REPORT

## WELL LOCATION AND ACREAGE DEDICATION PLAT

<sup>1</sup> API Number <b>30-025-42479</b>	<sup>2</sup> Pool Code <b>7320</b>	<sup>3</sup> Pool Name <b>BRINNINSTOOL; BONE SPRING</b>
<sup>4</sup> Property Code <b>314247</b>	<sup>5</sup> Property Name <b>NORTH THISTLE 15-10 STATE COM</b>	<sup>6</sup> Well Number <b>2H</b>
<sup>7</sup> OGRID No. <b>6137</b>	<sup>8</sup> Operator Name <b>DEVON ENERGY PRODUCTION COMPANY, L.P.</b>	<sup>9</sup> Elevation <b>3714.5</b>

<sup>10</sup> Surface Location

UL or lot no.	Section	Township	Range	Lot Idn	Feet from the	North/South line	Feet from the	East/West line	County
<b>F</b>	<b>15</b>	<b>23 S</b>	<b>33 E</b>		<b>2632</b>	<b>NORTH</b>	<b>2032</b>	<b>WEST</b>	<b>LEA</b>

<sup>11</sup> Bottom Hole Location If Different From Surface.

UL or lot no.	Section	Township	Range	Lot Idn	Feet from the	North/South line	Feet from the	East/West line	County
<b>C</b>	<b>10</b>	<b>23 S</b>	<b>33 E</b>		<b>330</b>	<b>NORTH</b>	<b>1732</b>	<b>WEST</b>	<b>LEA</b>

<sup>12</sup> Dedicated Acres	<sup>13</sup> Joint or Infill	<sup>14</sup> Consolidation Code	<sup>15</sup> Order No.
<b>240</b>			

No allowable will be assigned to this completion until all interests have been consolidated or a non-standard unit has been approved by the division.

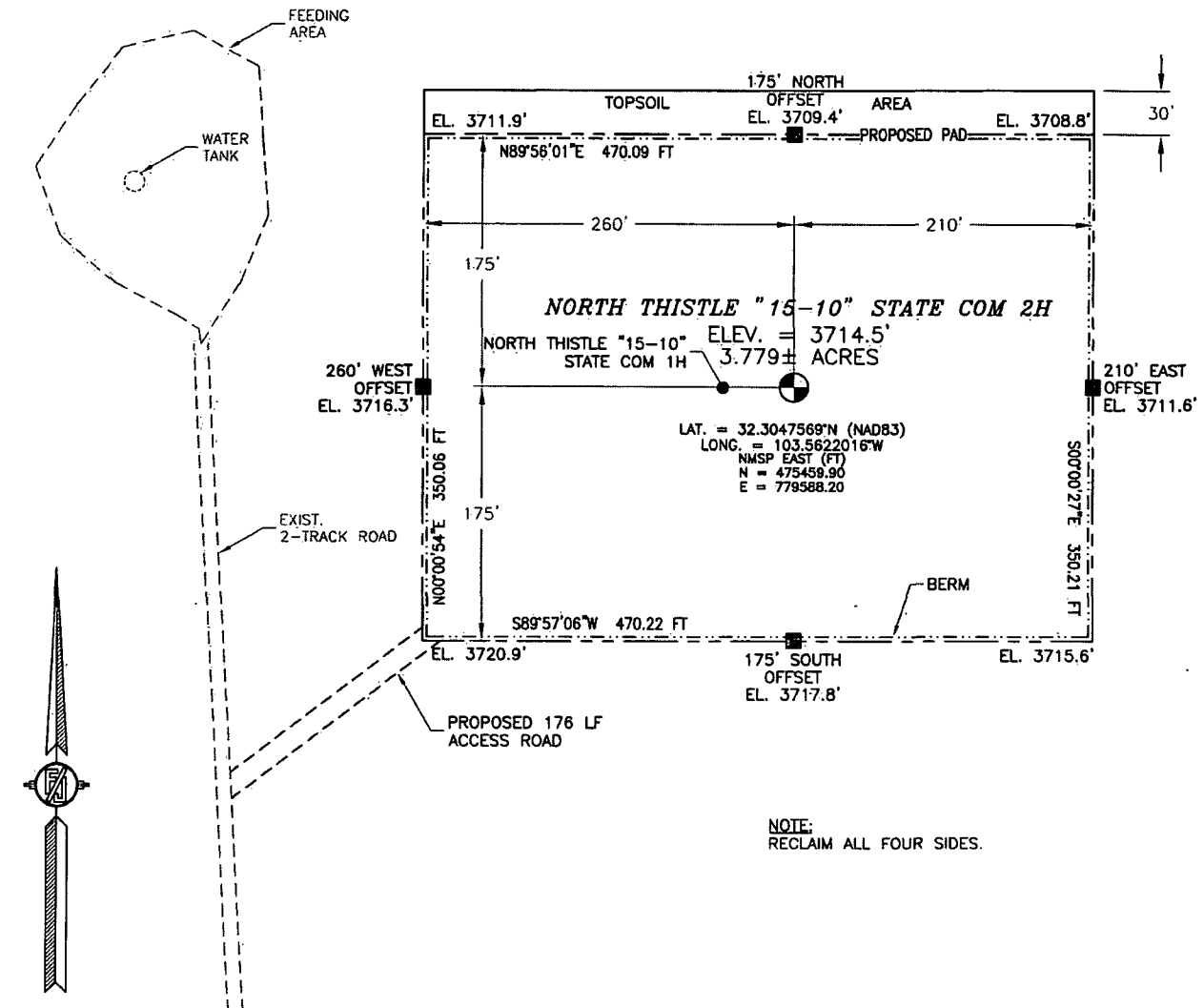
	<p><b><sup>17</sup> OPERATOR CERTIFICATION</b></p> <p>I hereby certify that the information contained herein is true and complete to the best of my knowledge and belief, and that this organization either owns a working interest or undivided mineral interest in the land including the proposed bottom hole location or has a right to drill this well at this location pursuant to a contract with an owner of such a mineral or working interest, or to a voluntary pooling agreement or a compulsory pooling order heretofore entered by the division.</p> <p><i>[Signature]</i> <b>3/17/2015</b></p> <p>Signature Date</p> <p><b>David H. Cook</b></p> <p>Printed Name</p> <p><b>david.cook@dvn.com</b></p> <p>E-mail Address</p>
	<p><b><sup>18</sup> SURVEYOR CERTIFICATION</b></p> <p>I hereby certify that the well location shown on this plat was plotted from field notes of actual surveys made by me or under my supervision, and that the same is true and correct to the best of my belief.</p> <p><b>FEBRUARY 24, 2015</b></p> <p>Date of Survey</p> <p><i>[Signature]</i></p> <p>Signature and Seal of Professional Surveyor</p> <p>Certificate Number: <b>FILIPON P. JARAMILLO, PLS 12797</b></p> <p>SURVEY NO. 3669</p>
	<p><b>NOTE:</b></p> <p>ALL LATITUDE AND LONGITUDE COORDINATES ARE BASED ON THE NAD 83 DATUM OF 1983 (NAD83). UNLESS NEW MEXICO STATE PLANE EAST COORDINATES ARE USED (NAD83). BASES OF BEARING AND DISTANCES USED ARE NEW MEXICO STATE PLANE EAST COORDINATES MODIFIED TO THE SURFACE.</p>
	<p><b>SW CORNER SEC. 15</b> LAT. = 32.2974757N LONG. = 103.5687592W N= 477796.48 E = 777980.98</p> <p><b>S CORNER SEC. 15</b> LAT. = 32.2974448N LONG. = 103.5687592W N= 477811.37 E = 780218.33</p> <p><b>SE CORNER SEC. 15</b> LAT. = 32.2974530N LONG. = 103.5616745W N= 477826.30 E = 782860.12</p>

PP: 2032 FNL &amp; 1732 FWL; 15-23S-33E

MAR 19 2015

SECTION 15, TOWNSHIP 23 SOUTH, RANGE 33 EAST, N.M.P.M.  
LEA COUNTY, STATE OF NEW MEXICO  
**SITE MAP**

NOTE: LATITUDE AND LONGITUDE COORDINATES ARE SHOWN USING THE NORTH AMERICAN DATUM OF 1983 (NAD83). LISTED NEW MEXICO STATE PLANE EAST COORDINATES ARE GRID (NAD83); BASIS OF BEARING AND DISTANCES USED ARE NEW MEXICO STATE PLANE EAST COORDINATES MODIFIED TO THE SURFACE



NOTE:  
RECLAIM ALL FOUR SIDES.

0 12 60 120 240

SCALE 1" = 120'

**DIRECTIONS TO LOCATION**

FROM THE INTERSECTION OF CR 21 (DELAWARE BASIN) AND XL ROAD, GO NORTH ON CR 21 FOR APPROX. 2.0 MILES. GO WEST ON 20' CALICHE LEASE ROAD FOR APPROX. 3.0 MILES. GO NORTH ON 2-TRACK ROAD FOR APPROX. 0.4 OF A MILE TO BEGIN ROAD SURVEY. GO NORTHEAST APPROX. 176' TO THE SOUTHWEST PAD CORNER FOR THIS LOCATION.

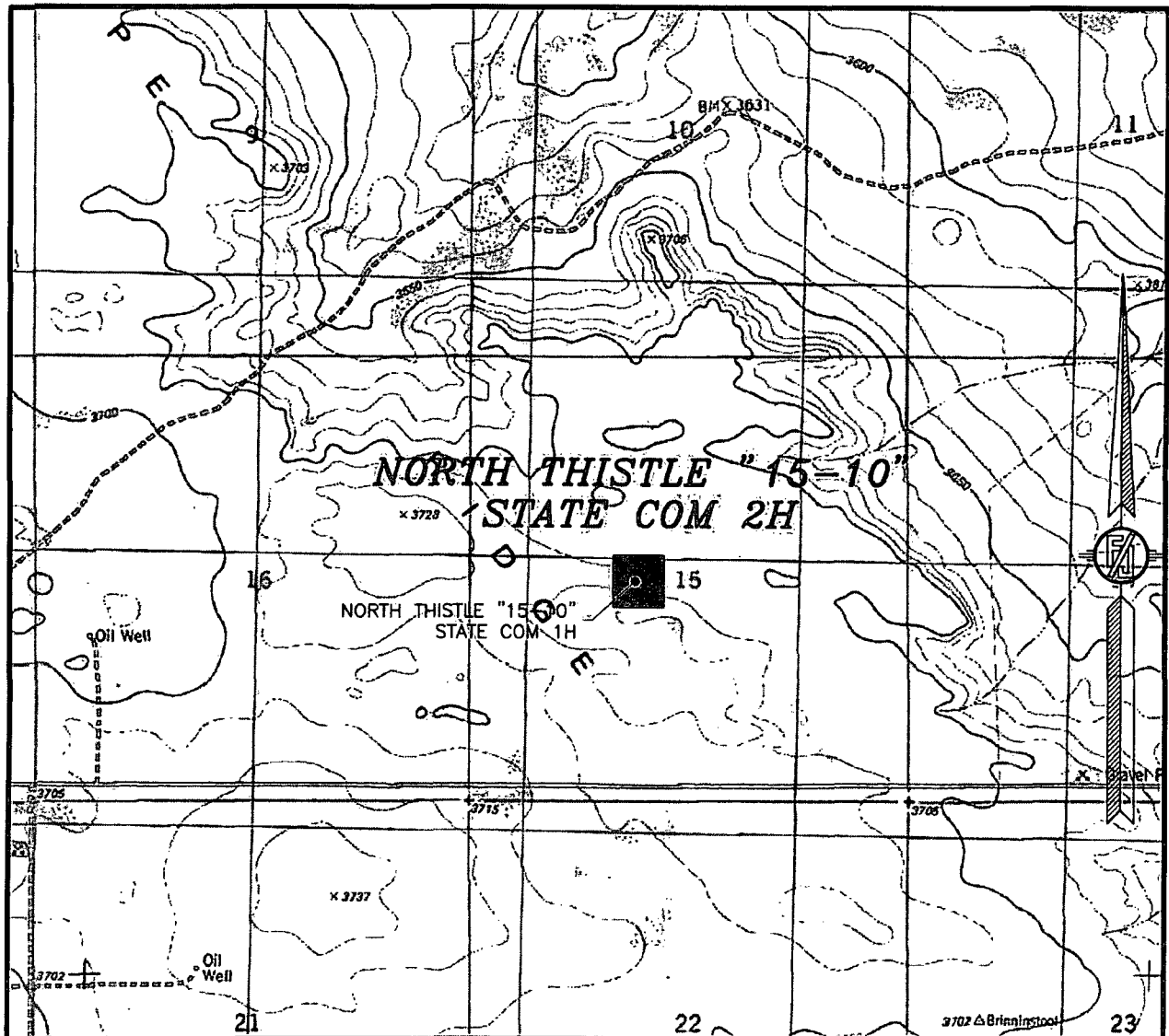
DEVON ENERGY PRODUCTION COMPANY, L.P.  
**NORTH THISTLE "15-10" STATE COM 2H**  
LOCATED 2632 FT. FROM THE NORTH LINE  
AND 2032 FT. FROM THE WEST LINE OF  
SECTION 15, TOWNSHIP 23 SOUTH,  
RANGE 33 EAST, N.M.P.M.  
LEA COUNTY, STATE OF NEW MEXICO

FEBRUARY 24, 2015

SURVEY NO. 3669

MADRON SURVEYING, INC. 301 SOUTH CANAL (575) 234-3341 CARLSBAD, NEW MEXICO

SECTION 15, TOWNSHIP 23 SOUTH, RANGE 33 EAST, N.M.P.M.  
LEA COUNTY, STATE OF NEW MEXICO  
LOCATION VERIFICATION MAP



USGS QUAD MAP:  
TIP TOP WELLS

NOT TO SCALE

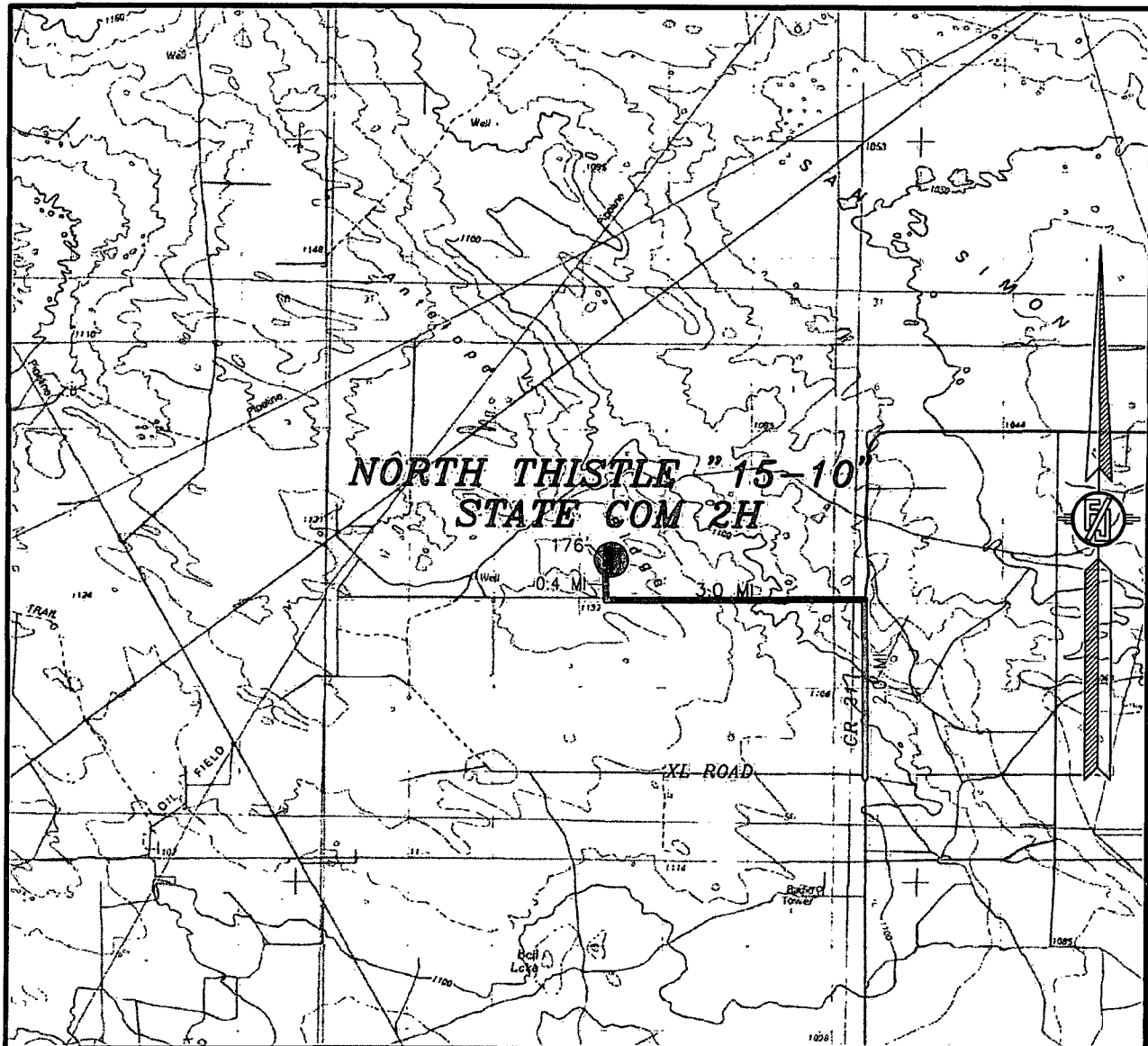
DEVON ENERGY PRODUCTION COMPANY, L.P.  
**NORTH THISTLE "15-10" STATE COM 2H**  
LOCATED 2632 FT. FROM THE NORTH LINE  
AND 2032 FT. FROM THE WEST LINE OF  
SECTION 15, TOWNSHIP 23 SOUTH,  
RANGE 33 EAST, N.M.P.M.  
LEA COUNTY, STATE OF NEW MEXICO

FEBRUARY 24, 2015

SURVEY NO. 3669

MADRON SURVEYING, INC. 301 SOUTH CANAL (575) 234-3341 CARLSBAD, NEW MEXICO

SECTION 15, TOWNSHIP 23 SOUTH, RANGE 33 EAST, N.M.P.M.  
LEA COUNTY, STATE OF NEW MEXICO  
VICINITY MAP



DISTANCES IN MILES

NOT TO SCALE

DEVON ENERGY PRODUCTION COMPANY, L.P.  
**NORTH THISTLE "15-10" STATE COM 2H**

LOCATED 2632 FT. FROM THE NORTH LINE  
AND 2032 FT. FROM THE WEST LINE OF  
SECTION 15, TOWNSHIP 23 SOUTH,  
RANGE 33 EAST, N.M.P.M.  
LEA COUNTY, STATE OF NEW MEXICO

**DIRECTIONS TO LOCATION**

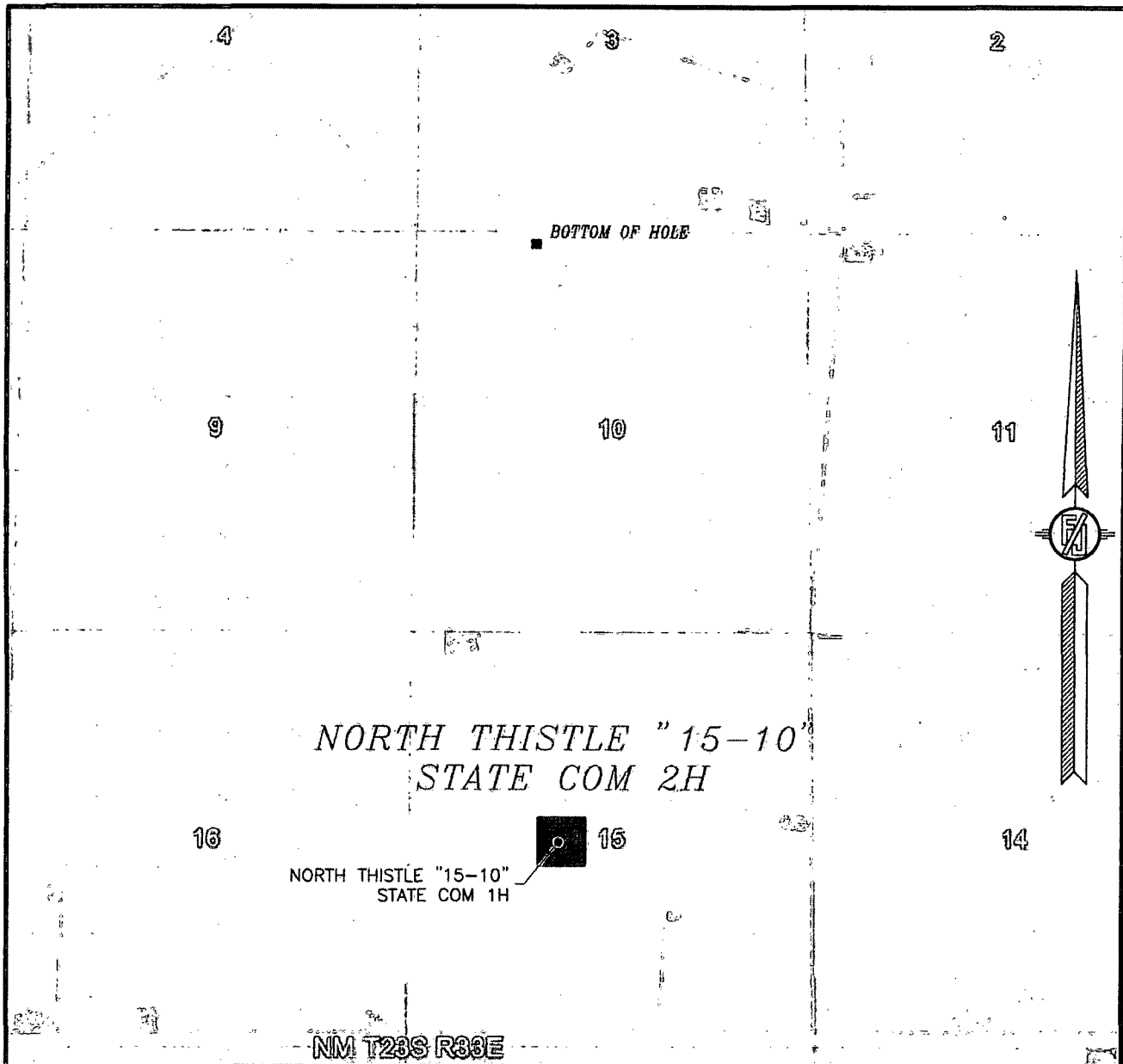
FROM THE INTERSECTION OF CR 21 (DELAWARE BASIN) AND XL ROAD,  
GO NORTH ON CR 21 FOR APPROX. 2.0 MILES. GO WEST ON 20'  
CALICHE LEASE ROAD FOR APPROX. 3.0 MILES. GO NORTH ON  
2-TRACK ROAD FOR APPROX. 0.4 OF A MILE TO BEGIN ROAD  
SURVEY. GO NORTHEAST APPROX. 176° TO THE SOUTHWEST PAD  
CORNER FOR THIS LOCATION.

FEBRUARY 24, 2015

SURVEY NO. 3669

MADRON SURVEYING, INC. 301 SOUTH CANAL (575) 234-3341 CARLSBAD, NEW MEXICO

SECTION 15, TOWNSHIP 23 SOUTH, RANGE 33 EAST, N.M.P.M.  
LEA COUNTY, STATE OF NEW MEXICO  
**AERIAL PHOTO**



NOT TO SCALE  
AERIAL PHOTO:  
GOOGLE EARTH  
FEBRUARY 2014

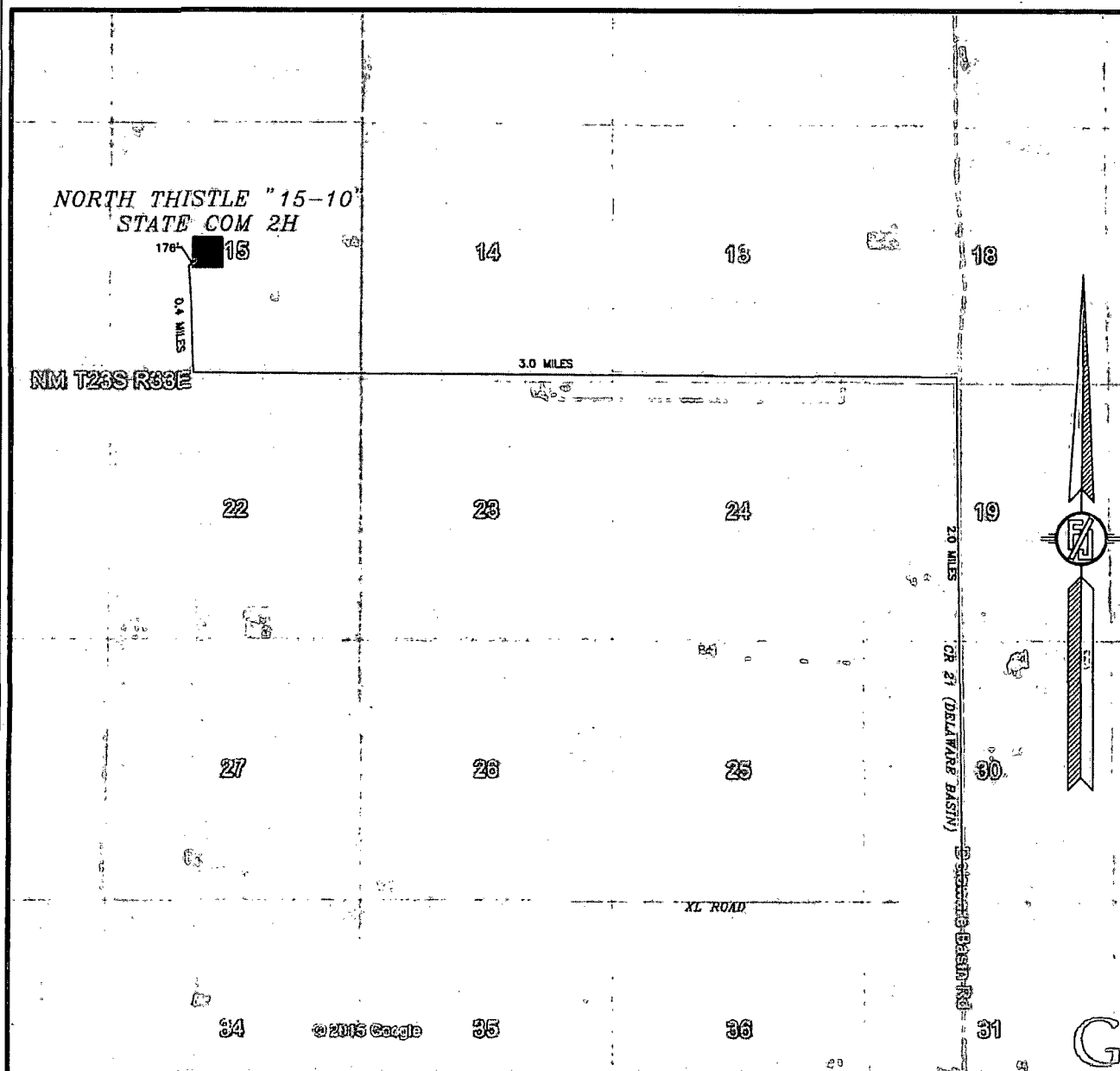
**DEVON ENERGY PRODUCTION COMPANY, L.P.**  
**NORTH THISTLE "15-10" STATE COM 2H**  
LOCATED 2632 FT. FROM THE NORTH LINE  
AND 2032 FT. FROM THE WEST LINE OF  
SECTION 15, TOWNSHIP 23 SOUTH,  
RANGE 33 EAST, N.M.P.M.  
LEA COUNTY, STATE OF NEW MEXICO

FEBRUARY 24, 2015

SURVEY NO. 3669

MADRON SURVEYING, INC. 301 SOUTH CANAL (575) 234-3341 CARLSBAD, NEW MEXICO

SECTION 15, TOWNSHIP 23 SOUTH, RANGE 33 EAST, N.M.P.M.  
LEA COUNTY, STATE OF NEW MEXICO  
ACCESS AERIAL ROUTE MAP



NOT TO SCALE  
AERIAL PHOTO:  
GOOGLE EARTH  
FEBRUARY 2014

DEVON ENERGY PRODUCTION COMPANY, L.P.  
**NORTH THISTLE "15-10" STATE COM 2H**  
LOCATED 2632 FT. FROM THE NORTH LINE  
AND 2032 FT. FROM THE WEST LINE OF  
SECTION 15, TOWNSHIP 23 SOUTH,  
RANGE 33 EAST, N.M.P.M.  
LEA COUNTY, STATE OF NEW MEXICO

FEBRUARY 24, 2015

SURVEY NO. 3669

MADRON SURVEYING, INC. 301 SOUTH CANAL (575) 234-3341 CARLSBAD, NEW MEXICO