

HOBBS OCD

MAR 19 2015 ?

Form C-102

Revised August 1, 2011

Submit one copy to appropriate District Office

DISTRICT I  
1625 N. French Dr., Hobbs, NM 88240  
Phone (575) 393-6161 Fax (575) 393-0720

DISTRICT II  
811 S. First St., Artesia, NM 88210  
Phone (575) 748-1283 Fax (575) 748-9720

DISTRICT III  
1000 Rio Brazos Road, Aztec, NM 87410  
Phone (505) 334-6178 Fax (505) 334-6170

DISTRICT IV  
1220 S. St. Francis Dr., Santa Fe, NM 87505  
Phone (505) 476-3460 Fax (505) 476-3462

State of New Mexico  
Energy, Minerals & Natural Resources Department  
OIL CONSERVATION DIVISION  
1220 South St. Francis Dr.  
Santa Fe, New Mexico 87505

RECEIVED

AMENDED REPORT

## WELL LOCATION AND ACREAGE DEDICATION PLAT

API Number <b>30-025-42481</b>	Pool Code 96553	Pool Name Ojo Chiso; Bone Spring
Property Code 313707	Property Name <b>8711 CHISO 14 STATE 8711</b>	Well Number 2H
OGRID No 260297	Operator Name <b>BTA OIL PRODUCERS, LLC</b>	Elevation 3505'

## Surface Location

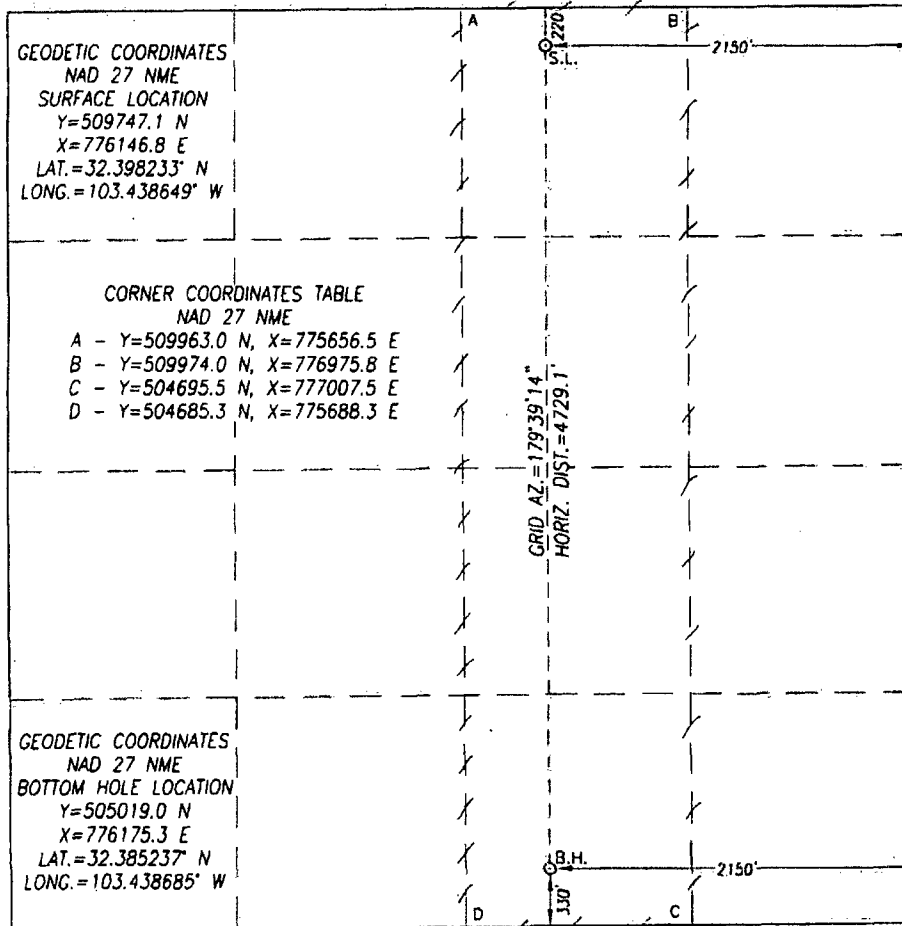
UL or lot No	Section	Township	Range	Lot Idn	Feet from the	North/South line	Feet from the	East/West line	County
B	14	22-S	34-E		220	NORTH	2150	EAST	LEA

## Bottom Hole Location If Different From Surface

UL or lot No	Section	Township	Range	Lot Idn	Feet from the	North/South line	Feet from the	East/West line	County
O	14	22-S	34-E		330	SOUTH	2150	EAST	LEA

Dedicated Acres	Joint or Infill	Consolidation Code	Order No.
160			

NO ALLOWABLE WILL BE ASSIGNED TO THIS COMPLETION UNTIL ALL INTERESTS HAVE BEEN CONSOLIDATED OR A NON-STANDARD UNIT HAS BEEN APPROVED BY THE DIVISION



## OPERATOR CERTIFICATION

I hereby certify that the information herein is true and complete to the best of my knowledge and belief, and that this organization either owns a working interest or unleased mineral interest in the land including the proposed bottom hole location or has a right to drill this well at this location pursuant to a contract with an owner of such mineral or working interest, or to a voluntary pooling agreement or a compulsory pooling order heretofore entered by the division.

*Kayla McConnell* 3/18/15  
Signature Date

Kayla McConnell  
Printed Name

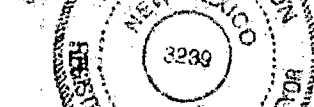
kmccconnell@btaoil.com  
E-mail Address

## SURVEYOR CERTIFICATION

I hereby certify that the well location shown on this plat was plotted from field notes of actual surveys made by me or under my supervision, and that the same is true and correct to the best of my belief.

FEBRUARY 24, 2015

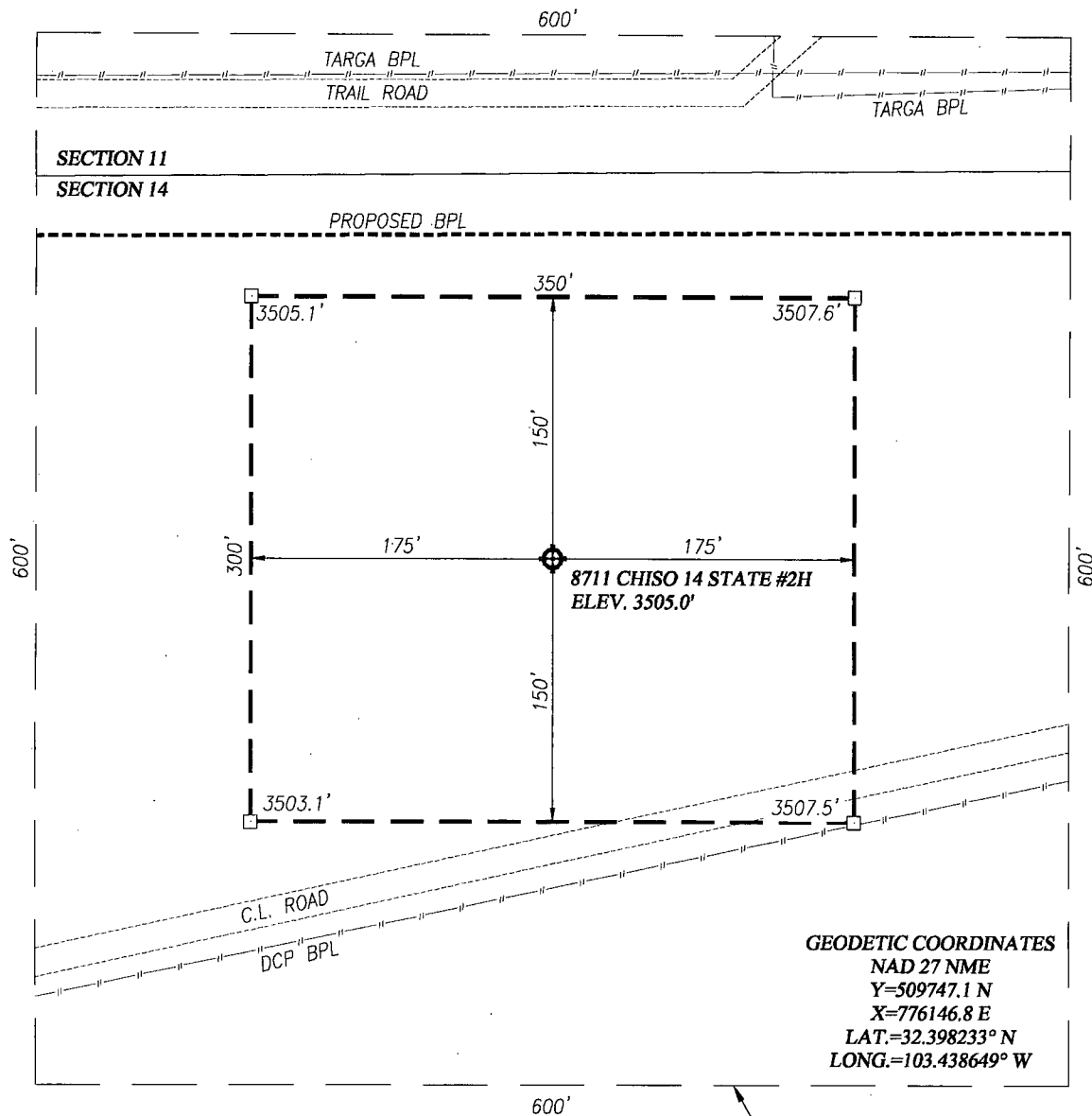
Date of Survey  
Signature & Seal of Professional Surveyor



*Ronald J. Eidson* 03/17/2015  
Certificate Number Gary G. Eidson 12641  
Ronald J. Eidson 3239

ACK JWSC W O 15 11 0263

MAR 19 2015

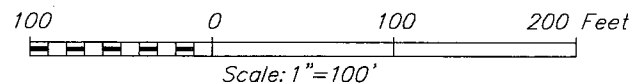


GEODETIC COORDINATES  
 NAD 27 NME  
 Y=509747.1 N  
 X=776146.8 E  
 LAT.=32.398233° N  
 LONG.=103.438649° W

NOTE:  
 1) SEE "TOPOGRAPHICAL AND ACCESS  
 ROAD MAP" FOR PROPOSED ROAD  
 LOCATION.

#### DIRECTIONS TO 8711 CHISO 14 STATE #2H:

FROM THE INTERSECTION OF ST. HWY. 207 AND ST. HWY. 176  
 IN EUNICE, NEW MEXICO. GO SOUTH ON ST. HWY. #207  
 APPROX. 2.65 MILES. TURN RIGHT AND GO WEST ON CO. RD.  
 #21 (DELAWARE BASIN ROAD), APPROX. 20.6 MILES. TURN  
 RIGHT AND GO NORTH 3.8 MILES. VEER RIGHT AND GO  
 NORTH-NORTHEAST APPROX. 1.35 MILES. TURN LEFT AND GO  
 WEST-SOUTHWEST APPROX. 900 FEET TO THIS LOCATION.



**BTA OIL PRODUCERS, LLC**

8711 CHISO 14 STATE #2H WELL  
 LOCATED 220 FEET FROM THE NORTH LINE  
 AND 2150 FEET FROM THE EAST LINE OF SECTION 14,  
 TOWNSHIP 22 SOUTH, RANGE 34 EAST, N.M.P.M.,  
 LEA COUNTY, NEW MEXICO



PROVIDING SURVEYING SERVICES  
 SINCE 1946  
**JOHN WEST SURVEYING COMPANY**  
 412 N. DAL PASO HOBBS, N.M. 88240  
 (575) 393-3117 www.jwsc.biz  
 TBPLS# 10021000

Survey Date: 2/24/15	CAD Date: 3/12/15	Drawn By: ACK
W.O. No.: 15110263	Rev: .	Rel. W.O.: Sheet 1 of 1