

HOBBS OCD

DISTRICT I

1625 N. French Dr., Hobbs, NM 88240
Phone (505) 393-6161 Fax: (505) 393-0720

DISTRICT II

811 S. First St., Artesia, NM 88210
Phone (505) 748-1283 Fax: (505) 748-9720

DISTRICT III

1000 Rio Brazos Rd., Aztec, NM 87410
Phone (505) 334-6178 Fax: (505) 334-6170

DISTRICT IV

1220 S. St. Francis Dr., Santa Fe, NM 87505
Phone (505) 476-3400 Fax: (505) 476-3402

MAR 20 2015

State of New Mexico
Energy, Minerals and Natural Resources Department

Form C-102

Revised August 1, 2011

Submit one copy to appropriate
District Office

OIL CONSERVATION DIVISION

1220 South St. Francis Dr.
Santa Fe, New Mexico 87505

WELL LOCATION AND ACREAGE DEDICATION PLAT

☐ AMENDED REPORT

API Number 30-025-42444	Pool Code 49685	Pool Name Pearl; Bone Springs, South
Property Code	Property Name BOYSENBERRY BVZ STATE	Well Number 1H
OGRID No. 025575	Operator Name YATES PETROLEUM CORP.	Elevation 3685

Surface Location

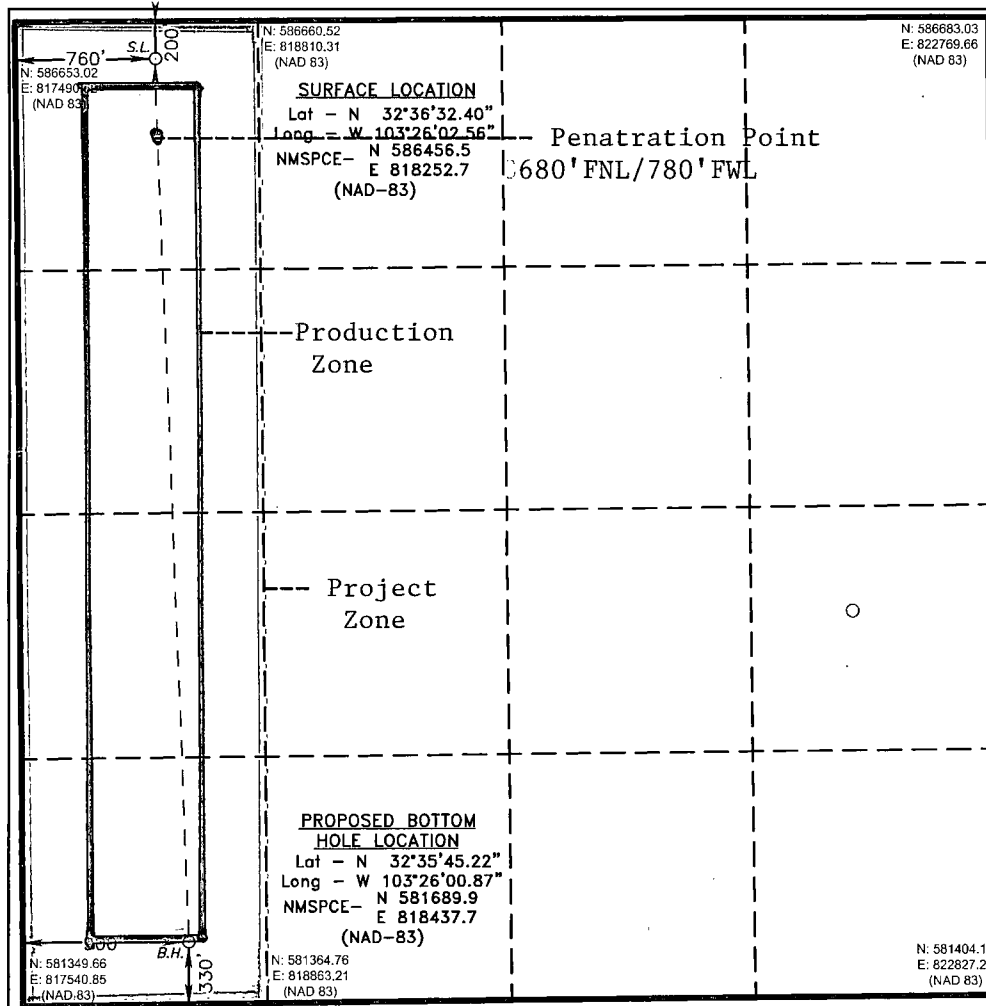
UL or lot No.	Section	Township	Range	Lot Idn	Feet from the	North/NORTH LINE	Feet from the	East/West line	County
D	2	20 S	35 E		200	NORTH	760	WEST	LEA

Bottom Hole Location If Different From Surface

UL or lot No.	Section	Township	Range	Lot Idn	Feet from the	North/NORTH LINE	Feet from the	East/West line	County
M	2	20 S	35 E		330	SOUTH	900	WEST	LEA

Dedicated Acres	Joint or Infill	Consolidation Code	Order No.
160.62			

NO ALLOWABLE WILL BE ASSIGNED TO THIS COMPLETION UNTIL ALL INTERESTS HAVE BEEN CONSOLIDATED
OR A NON-STANDARD UNIT HAS BEEN APPROVED BY THE DIVISION



OPERATOR CERTIFICATION

I hereby certify that the information contained herein is true and complete to the best of my knowledge and belief, and that this organization either owns a working interest or unleased mineral interest in the land including the proposed bottom hole location or has a right to drill this well at this location pursuant to a contract with an owner of such a mineral or working interest, or to a voluntary pooling agreement or a compulsory pooling order heretofore entered by the division.

Signature: *Rene P. Bela* Date: 3/19/15

Printed Name: Rene P. Bela
Email Address: rbela@yatespetroleum.com

SURVEYOR CERTIFICATION

I hereby certify that the well location shown on this plat was plotted from field notes of actual surveys made by me or under my supervision, and that the same is true and correct to the best of my belief.

DATE SURVEYED: MAR 19 2015
Signature of Professional Surveyor: *[Signature]*
Professional Surveyor: 7977
Certificate No.: 7977

0' 500' 1000' 1500'
SCALE: 1" = 1000'
WO Num.: 31578

MAR 24 2015