

DISTRICT I
1625 N. French Dr., Hobbs, NM 88240
Phone: (575) 393-6161 Fax: (575) 393-0720

DISTRICT II
811 S. First St., Artesia, NM 88210
Phone: (575) 748-1283 Fax: (575) 748-9720

DISTRICT III
1000 Rio Brazos Road, Aztec, NM 87410
Phone: (505) 334-6178 Fax: (505) 334-6170

DISTRICT IV
1220 S. St. Francis Dr., Santa Fe, NM 87505
Phone: (505) 476-3460 Fax: (505) 476-3462

State of New Mexico
Energy, Minerals & Natural Resources Department
OIL CONSERVATION DIVISION
1220 South St. Francis Dr.
Santa Fe, New Mexico 87505

Form C-102
Revised August 1, 2011
Submit one copy to appropriate
District Office

MAR 20 2015

X AMENDED REPORT
(dedication
outlined)

WELL LOCATION AND ACREAGE DEDICATION PLAT

API Number 30-025-42055	Pool Code 61780	Pool Name Vacuun; ABO Reef
Property Code 306627	Property Name WARN STATE AC 2	Well Number 27
OGRID No. 873	Operator Name APACHE CORPORATION	Elevation 3972'

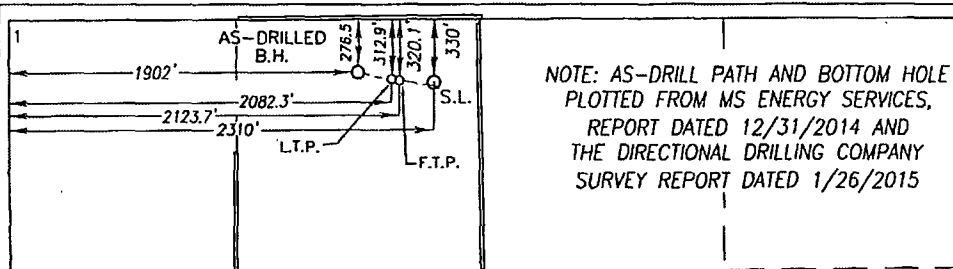
Surface Location

UL or lot No.	Section	Township	Range	Lot Idn	Feet from the	North/South line	Feet from the	East/West line	County
C	6	18-S	35-E		330	NORTH	2310	WEST	LEA

AS-DRILLED Bottom Hole Location If Different From Surface

UL or lot No.	Section	Township	Range	Lot Idn	Feet from the	North/South line	Feet from the	East/West line	County
C	6	18-S	35-E		277	NORTH	1902	WEST	LEA
Dedicated Acres 40	Joint or Infill	Consolidation Code	Order No.						

NO ALLOWABLE WILL BE ASSIGNED TO THIS COMPLETION UNTIL ALL INTERESTS HAVE BEEN CONSOLIDATED OR A NON-STANDARD UNIT HAS BEEN APPROVED BY THE DIVISION



NOTE: AS-DRILL PATH AND BOTTOM HOLE
PLOTTED FROM MS ENERGY SERVICES,
REPORT DATED 12/31/2014 AND
THE DIRECTIONAL DRILLING COMPANY
SURVEY REPORT DATED 1/26/2015

OPERATOR CERTIFICATION

I hereby certify that the information herein is true and complete to the best of my knowledge and belief, and that this organization either owns a working interest or unleased mineral interest in the land including the proposed bottom hole location or has a right to drill this well at this location pursuant to a contract with an owner of such mineral or working interest, or to a voluntary pooling agreement or a compulsory pooling order heretofore entered by the division.

Michelle Cooper 3-3-15
Signature Date

Michelle Cooper
Printed Name

michelle.cooper@apachecorp.co
E-mail Address

SURVEYOR CERTIFICATION

I hereby certify that the well location shown on this plat was plotted from field notes of actual surveys made by me or under my supervision, and that the same is true and correct to the best of my belief.

JUNE 24, 2014

Date of Survey
Signature & Seal of Professional Surveyor:



Ronald J. Eidson 03/03/2015
Certificate Number

Gary G. Eidson 12641
Ronald J. Eidson 3239

LSL REL. 15.13.0187 JWSC W.O.: 15.13.0312

MAR 26 2015

AM