

DISTRICT I
1625 N. French Dr., Hobbs, NM 88240
Phone: (575) 393-6161 Fax: (575) 393-0720

DISTRICT II
811 S. First St., Artesia, NM 88210
Phone: (575) 748-1283 Fax: (575) 748-9720

DISTRICT III
1000 Rio Brazos Road, Aztec, NM 87410
Phone: (505) 334-6178 Fax: (505) 334-6170

DISTRICT IV
1220 S. St. Francis Dr., Santa Fe, NM 87505
Phone: (505) 476-3460 Fax: (505) 476-3462

State of New Mexico
Energy, Minerals & Natural Resources Department
HOBBS OCD
OIL CONSERVATION DIVISION
1220 South St. Francis Dr.
Santa Fe, New Mexico 87505

Form C-102
Revised August 1, 2011
Submit one copy to appropriate
District Office

MAR 30 2015

☐ AMENDED REPORT

RECEIVED

WELL LOCATION AND ACREAGE DEDICATION PLAT

API Number 30-025-42496		Pool Code 22900	Pool Name Eunice; Bli-Tu-Dr, North
Property Code 37346	Property Name WEST BLINEBRY DRINKARD UNIT		Well Number 221W
OGRID No. 873	Operator Name APACHE CORPORATION		Elevation 3464'

Surface Location

UL or lot No.	Section	Township	Range	Lot Idn	Feet from the	North/South line	Feet from the	East/West line	County
I	17	21-S	37-E		2300	SOUTH	500	EAST	LEA

Bottom Hole Location If Different From Surface

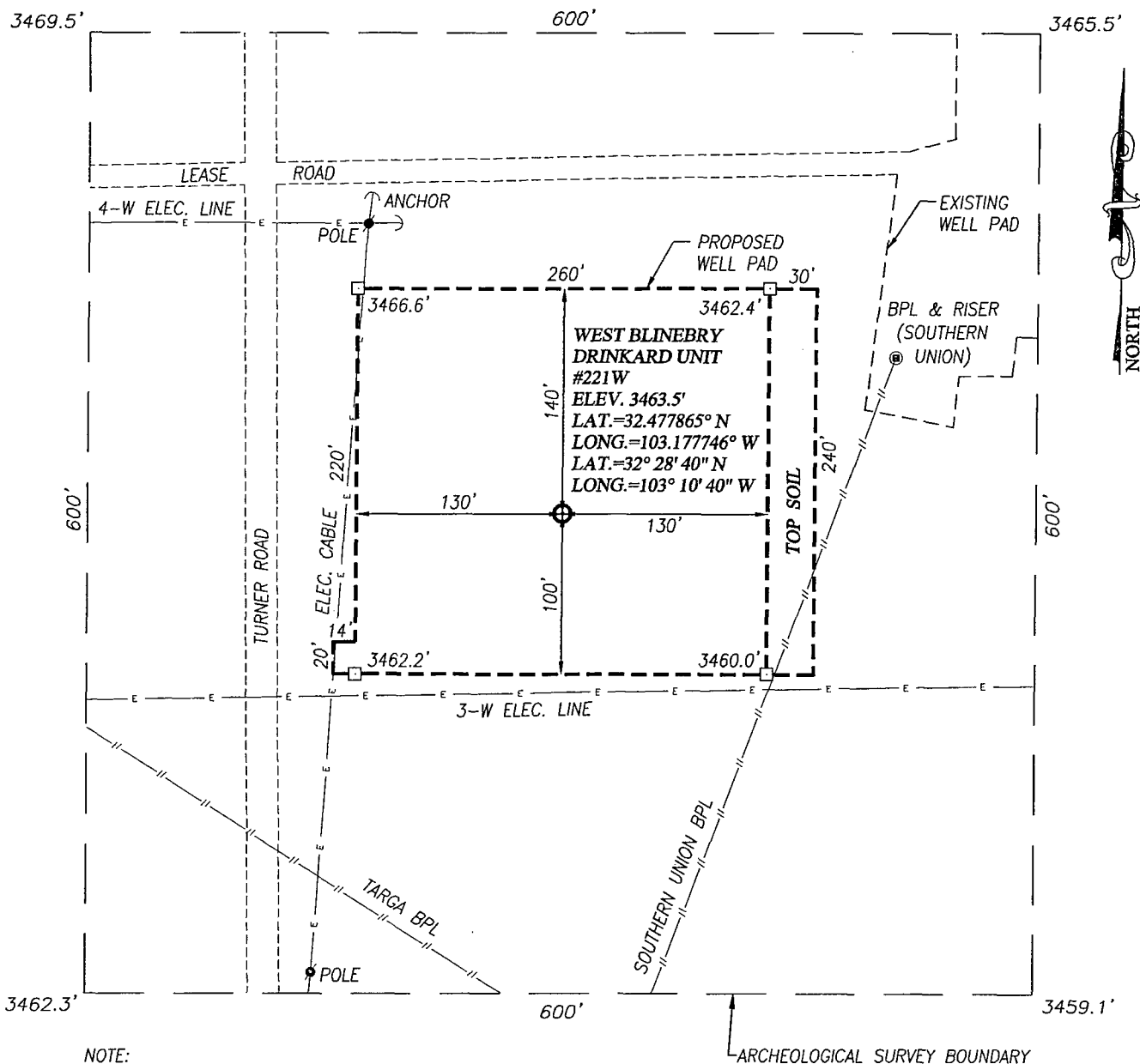
UL or lot No.	Section	Township	Range	Lot Idn	Feet from the	North/South line	Feet from the	East/West line	County

Dedicated Acres	Joint or Infill	Consolidation Code	Order No.
40			

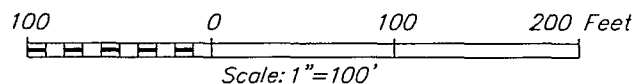
NO ALLOWABLE WILL BE ASSIGNED TO THIS COMPLETION UNTIL ALL INTERESTS HAVE BEEN CONSOLIDATED OR A NON-STANDARD UNIT HAS BEEN APPROVED BY THE DIVISION

<p>GEODETIC COORDINATES NAD 27 NME</p> <p>SURFACE LOCATION Y=539490.2 N X=856365.8 E</p> <p>LAT.=32.477865° N LONG.=103.177746° W</p> <p>LAT.=32° 28' 40" N LONG.=103° 10' 40" W</p>	<p>DETAIL</p>	<p>OPERATOR CERTIFICATION</p> <p>I hereby certify that the information herein is true and complete to the best of my knowledge and belief, and that this organization either owns a working interest or unleased mineral interest in the land including the proposed bottom hole location or has a right to drill this well at this location pursuant to a contract with an owner of such mineral or working interest, or to a voluntary pooling agreement or a compulsory pooling order heretofore entered by the division.</p> <p><i>Sorina L. Flores</i> 5/7/14 Signature Date</p> <p><i>Sorina L. Flores</i> Printed Name</p> <p><i>Sorina.flores@apachecorp.com</i> E-mail Address</p>
	<p>SEE DETAIL</p>	<p>SURVEYOR CERTIFICATION</p> <p>I hereby certify that the well location shown on this plat was plotted from field notes of actual surveys made by me or under my supervision, and that the same is true and correct to the best of my belief.</p> <p>FEBRUARY 5, 2014</p> <p>Date of Survey</p> <p>Signature & Seal of Professional Surveyor:</p>
	<p>GARY G. EIDSON NEW MEXICO 12641 2/5/14</p>	
	<p>Certificate Number Gary G. Eidson 12641 Ronald J. Eidson 3239 DSS Rev: 2/14/14 PROFESSIONAL WSC W.O.: 13.11.1281</p>	

MAR 31 2015



NOTE:
SEE "LOCATION VERIFICATION MAP"
FOR PROPOSED ROAD LOCATION.



DIRECTIONS TO LOCATION

FROM THE INTERSECTION OF ST. HIGHWAY 176 AND TURNER RD., GO NORTH ON TURNER RD. APPROX. 2.5 MILES. THIS WELL LOCATION IS APPROX. 180 FEET EAST.



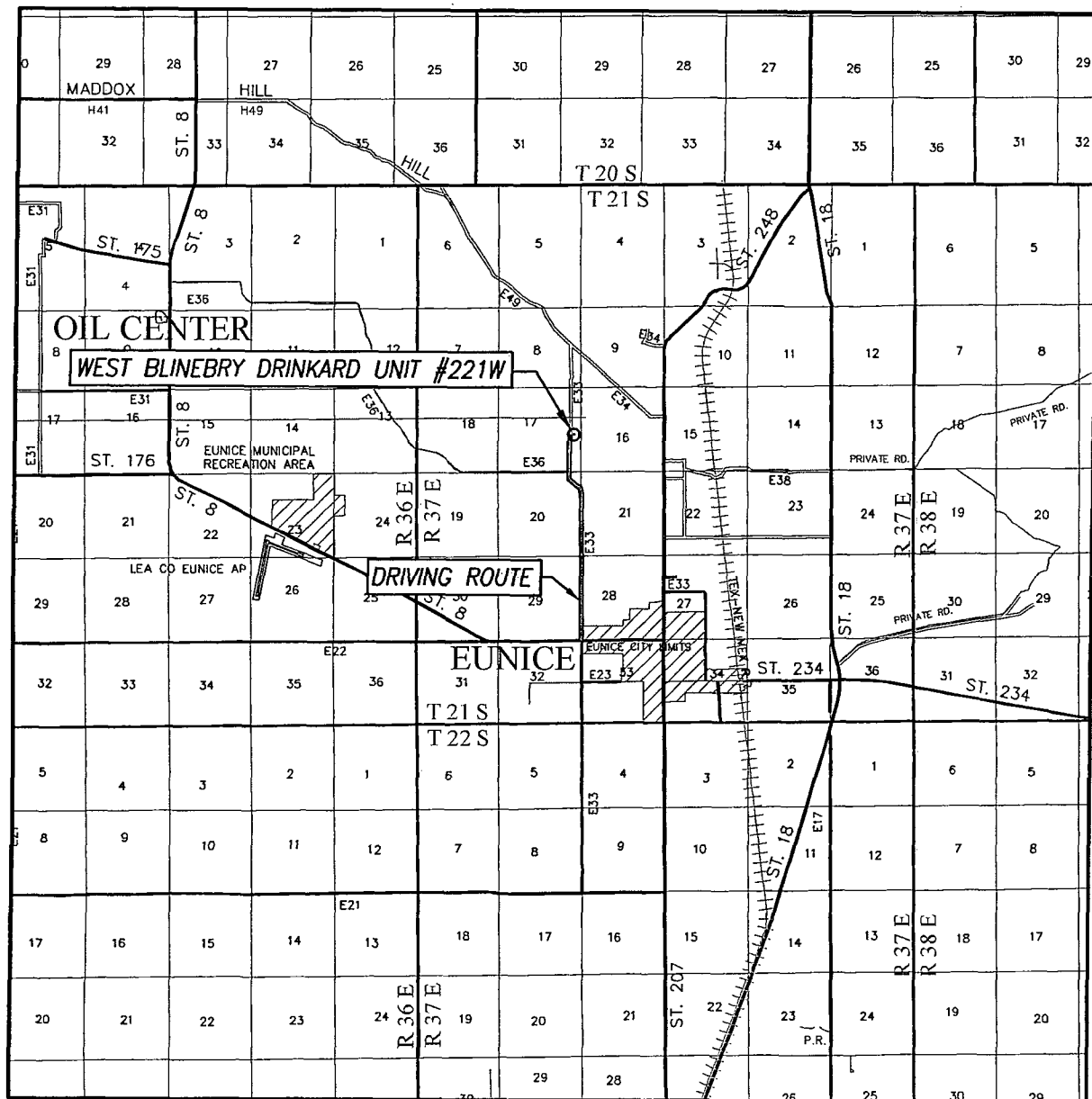
PROVIDING SURVEYING SERVICES
SINCE 1946
JOHN WEST SURVEYING COMPANY
412 N. DAL PASO HOBBS, N.M. 88240
(575) 393-3117 www.jwsc.biz
TBPLS# 10021000

APACHE CORPORATION

**WEST BLINEBRY DRINKARD UNIT #221W WELL
LOCATED 2300 FEET FROM THE SOUTH LINE
AND 500 FEET FROM THE EAST LINE OF SECTION 17,
TOWNSHIP 21 SOUTH, RANGE 37 EAST, N.M.P.M.,
LEA COUNTY, NEW MEXICO**

Survey Date: 2/5/14	CAD Date: 2/11/14	Drawn By: DSS
W.O. No.: 13111281	Rev: 2/18/14	Rel. W.O.:
		Sheet 1 of 1

VICINITY MAP



SCALE: 1" = 2 MILES

DRIVING ROUTE: SEE LOCATION VERIFICATION MAP

SEC. 17 TWP. 21-S RGE. 37-E

SURVEY N.M.P.M.

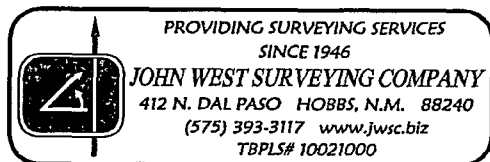
COUNTY LEA STATE NEW MEXICO

DESCRIPTION 2300' FSL & 500' FEL

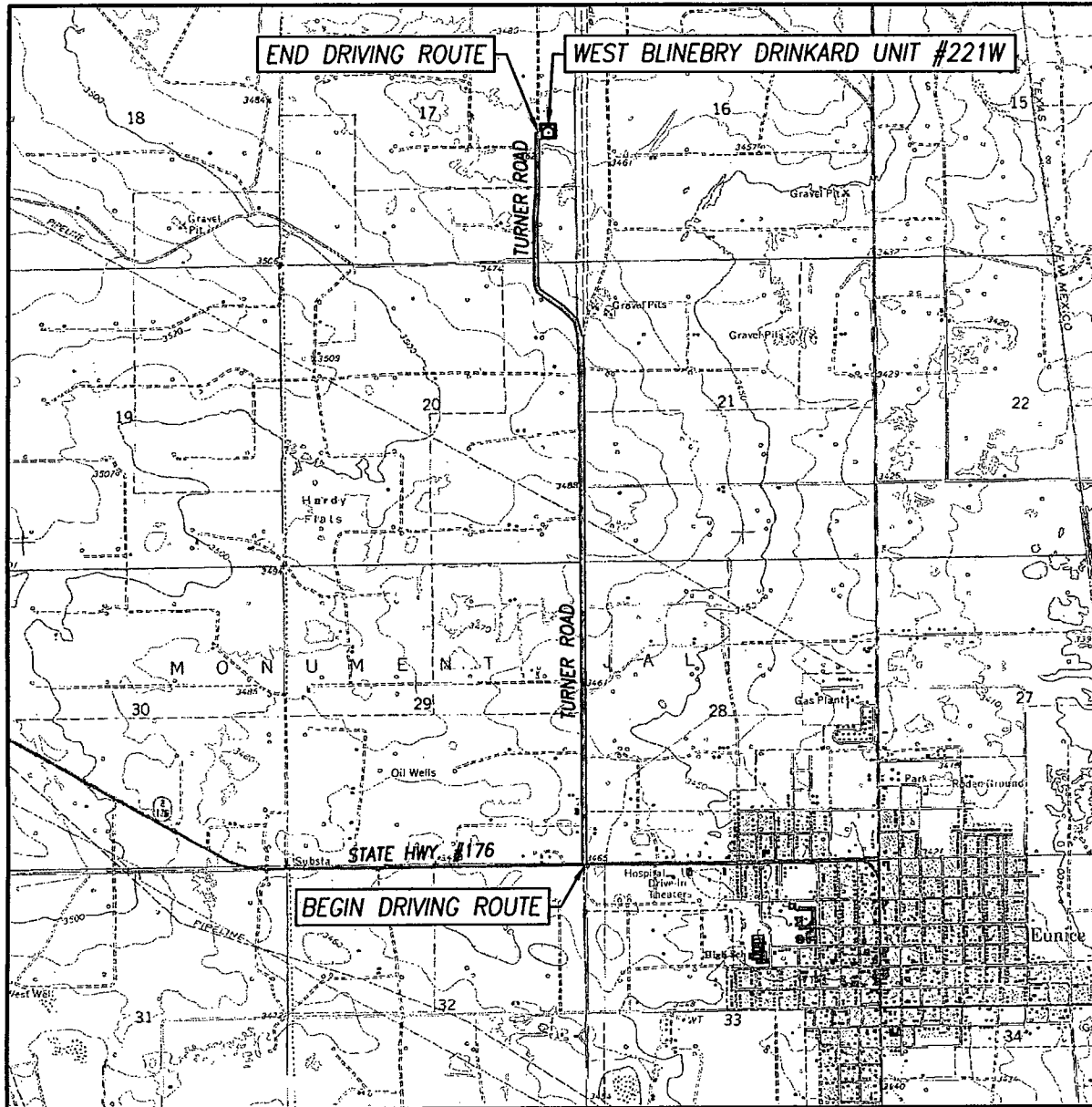
ELEVATION 3464'

OPERATOR APACHE CORPORATION

LEASE WEST BLINEBRY DRINKARD UNIT



LOCATION VERIFICATION MAP



SCALE: 1" = 3000'

CONTOUR INTERVAL:
EUNICE, N.M. - 10'

SEC. 17 TWP. 21-S RGE. 37-E

SURVEY N.M.P.M.

COUNTY LEA STATE NEW MEXICO

DESCRIPTION 2300' FSL & 500' FEL

ELEVATION 3464'

OPERATOR APACHE CORPORATION

LEASE WEST BLINEBRY DRINKARD UNIT

U.S.G.S. TOPOGRAPHIC MAP
EUNICE, N.M.

DIRECTIONS TO LOCATION

FROM THE INTERSECTION OF ST. HIGHWAY
176 AND TURNER RD., GO NORTH ON
TURNER RD. APPROX. 2.5 MILES. THIS
WELL LOCATION IS APPROX. 180 FEET EAST.

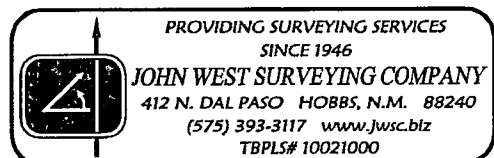


Exhibit = 2

APACHE CORPORATION

West Blinebry Drinkard Unit #221W

SEC: 17 T21S R37E

1 MILE RADIUS



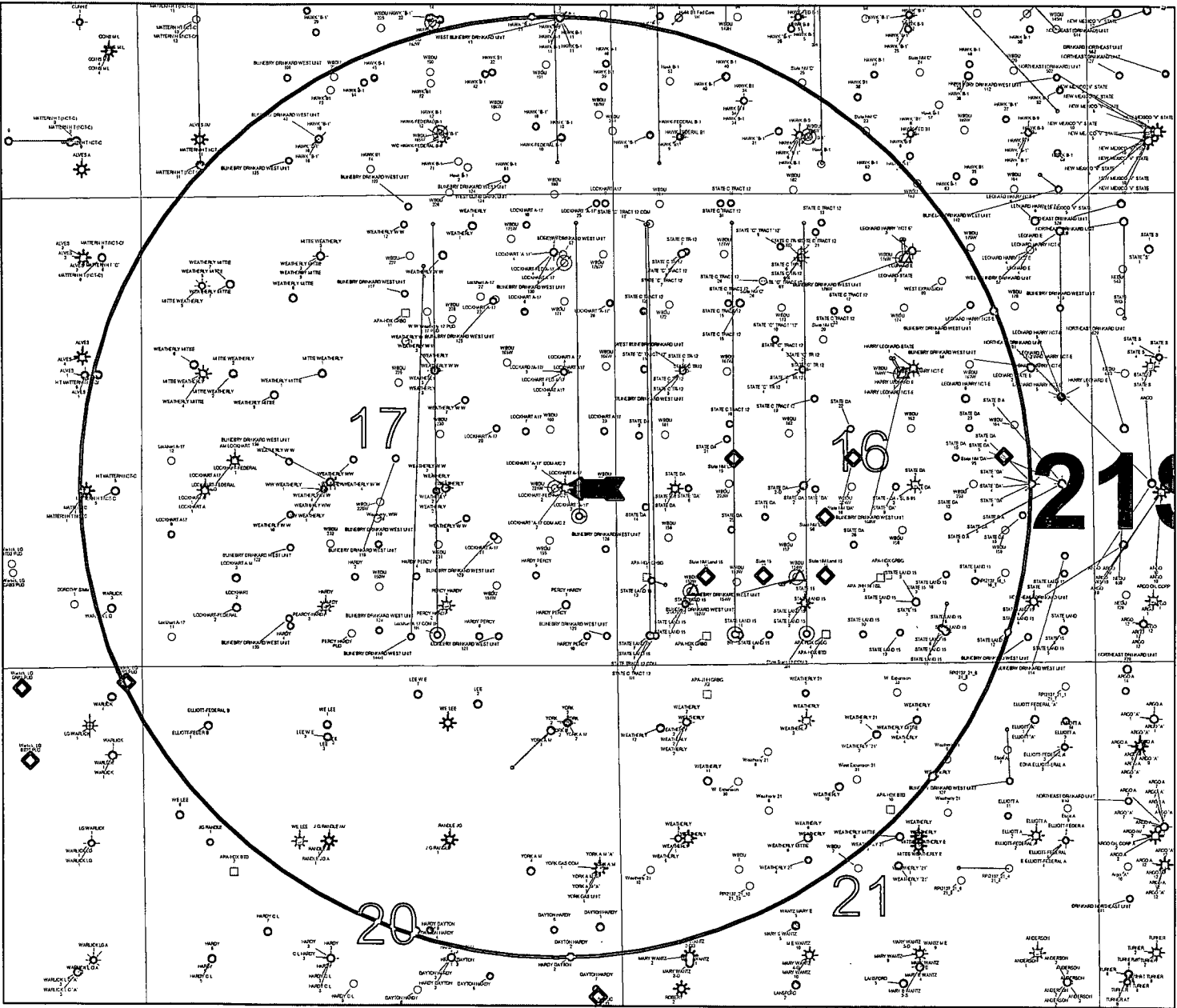
POSTED WELL DATA

Well Name
Well Number



- WELL SYMBOLS
- PERMIT DI
 - Abandoned Oil and Gas Well
 - BTD LOCATION
 - Dry Hole, With Show of Gas
 - Dry Hole, With Show of Oil & Gas
 - Dry Hole
 - Gas Well
 - GRBG LOCATION
 - Junked
 - Key Injection well
 - Location Only
 - Non Apache
 - Large Square
 - Oil & Gas Well
 - Oil Well
 - Drilling
 - Plugged and Abandoned
 - Active Producer
 - Active Injection
 - P&A'd Gas Well
 - New Location
 - Plugged Oil Well
 - Plugged Gas Well
 - Injection Well

April 10, 2014



PETRA 4/10/2014 3:20:25 PM

**ACCESS ROAD & FLOW LINE PLAT
WEST BLINEBRY DRINKARD UNIT #221W
EXHIBIT #1**

