

DISTRICT I
1625 N. French Dr., Hobbs, NM 88240
Phone: (575) 393-6161 Fax: (575) 393-0720
DISTRICT II
811 S. First St., Artesia, NM 88210
Phone: (575) 748-1283 Fax: (575) 748-9720
DISTRICT III
1000 Rio Brazos Road, Aztec, NM 87410
Phone: (505) 334-6178 Fax: (505) 334-6170
DISTRICT IV
1220 S. St. Francis Dr., Santa Fe, NM 87505
Phone: (505) 476-3460 Fax: (505) 476-3462

State of New Mexico
Energy, Minerals & Natural Resources Department
OIL CONSERVATION DIVISION
1220 South St. Francis Dr.
Santa Fe, New Mexico 87505

HOBBS OCD

MAR 30 2015

RECEIVED

Form C-102
Revised August 1, 2011
Submit one copy to appropriate
District Office

☐ AMENDED REPORT

WELL LOCATION AND ACREAGE DEDICATION PLAT

API Number 30-025-42493	Pool Code 22900	Pool Name EUNICE; BLI-TU-DR, NORTH
Property Code	Property Name WEST BLINEBRY DRINKARD UNIT	Well Number 185W
OGRID No. 873	Operator Name APACHE CORPORATION	Elevation 3503'

Surface Location

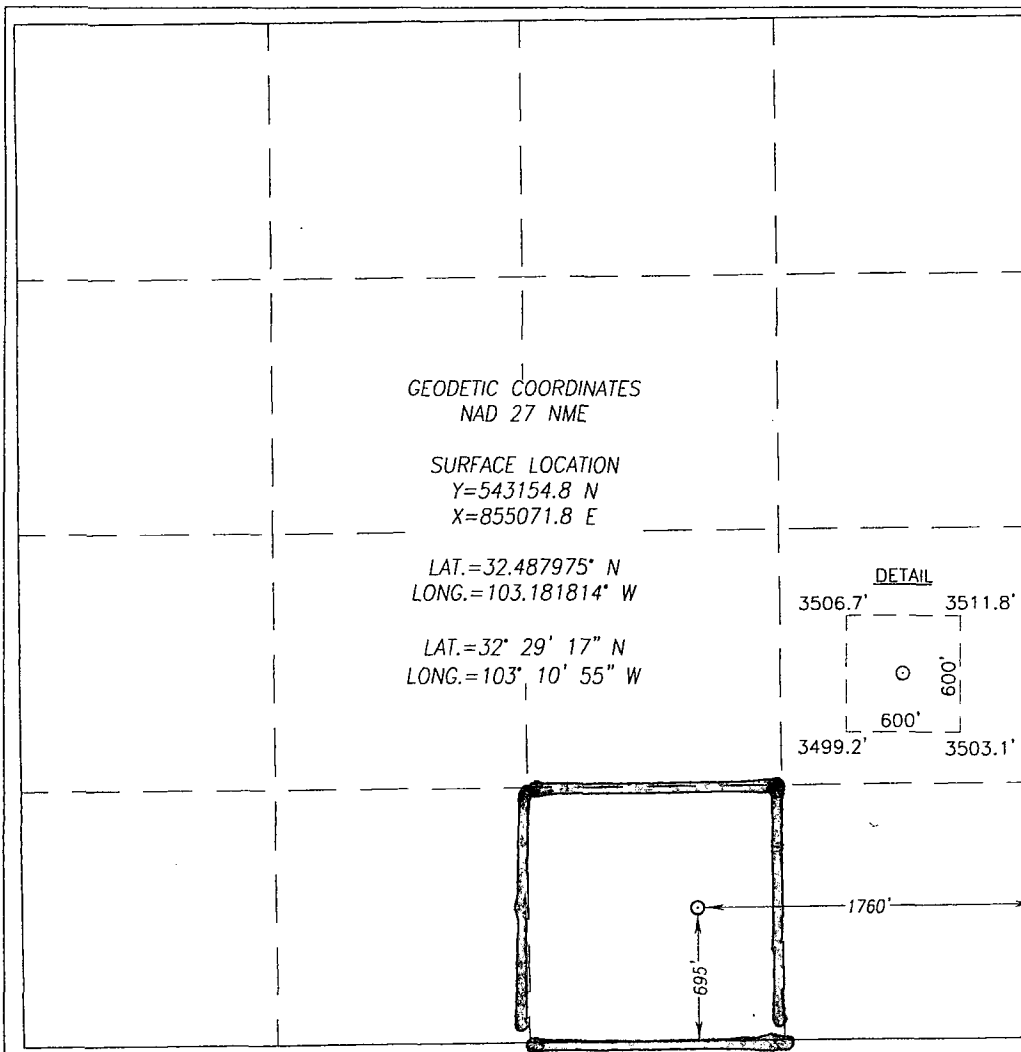
UL or lot No.	Section	Township	Range	Lot Idn	Feet from the	North/South line	Feet from the	East/West line	County
0	8	21-S	37-E		695	SOUTH	1760	EAST	LEA

Bottom Hole Location If Different From Surface

UL or lot No.	Section	Township	Range	Lot Idn	Feet from the	North/South line	Feet from the	East/West line	County

Dedicated Acres 40	Joint or Infill	Consolidation Code	Order No.
------------------------------	-----------------	--------------------	-----------

NO ALLOWABLE WILL BE ASSIGNED TO THIS COMPLETION UNTIL ALL INTERESTS HAVE BEEN CONSOLIDATED OR A NON-STANDARD UNIT HAS BEEN APPROVED BY THE DIVISION



OPERATOR CERTIFICATION

I hereby certify that the information herein is true and complete to the best of my knowledge and belief, and that this organization either owns a working interest or unleased mineral interest in the land including the proposed bottom hole location or has a right to drill this well at this location pursuant to a contract with an owner of such mineral or working interest, or to a voluntary pooling agreement or a compulsory pooling order heretofore entered by the division.

Sorina L Flores 4/3/14
Signature Date

Sorina L. Flores
Printed Name

sorina.flores@apachecorp.com
E-mail Address

SURVEYOR CERTIFICATION

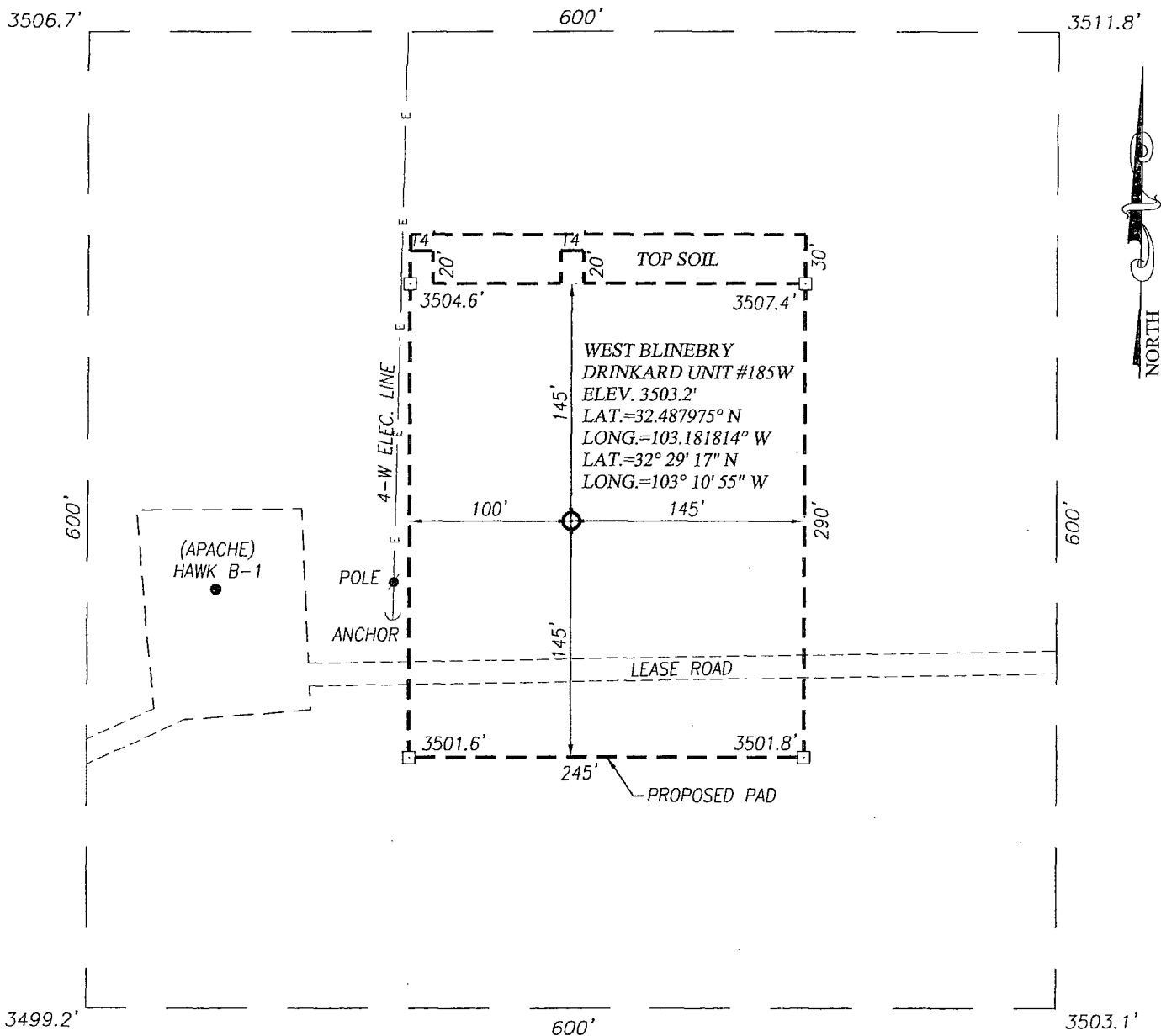
I hereby certify that the well location shown on this plat was plotted from field notes of actual surveys made by me or under my supervision, and that the same is true and correct to the best of my belief.

DECEMBER 23, 2013

Date of Survey
Signature & Seal of Professional Surveyor:

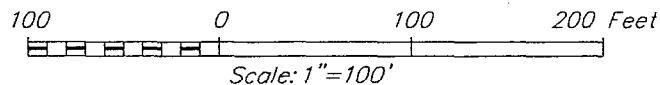
GARY G. EIDSON
NEW MEXICO
12641
Certificate Number
Gary G. Eidson 12641
Ronald A. Eidson 3239
BKL
W.O.: 13.11.1278

MAR 31 2015



DIRECTIONS TO LOCATION

FROM THE INTERSECTION OF ST. HIGHWAY 248 AND CO. RD.
E-34 (HILL RD.) GO WEST-NORTHWEST APPROX. 1.4 MILES;
TURN LEFT AND GO SOUTH ON TURNER ROAD. (E-33) APPROX.
0.4 MILES; TURN RIGHT AND GO WEST APPROX. 0.2 MILES; TO
THIS STAKED LOCATION IS NORTH APPROX. 80 FEET.



APACHE CORPORATION

WEST BLINEBRY DRINKARD UNIT #185W WELL
LOCATED 695 FEET FROM THE SOUTH LINE
AND 1760 FEET FROM THE EAST LINE OF SECTION 8,
TOWNSHIP 21 SOUTH, RANGE 37 EAST, N.M.P.M.,
LEA COUNTY, NEW MEXICO

Survey Date: 12/23/13

CAD Date: 1/2/13

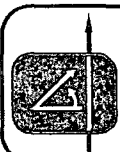
Drawn By: BKL

W.O. No.: 13111278

Rev: .

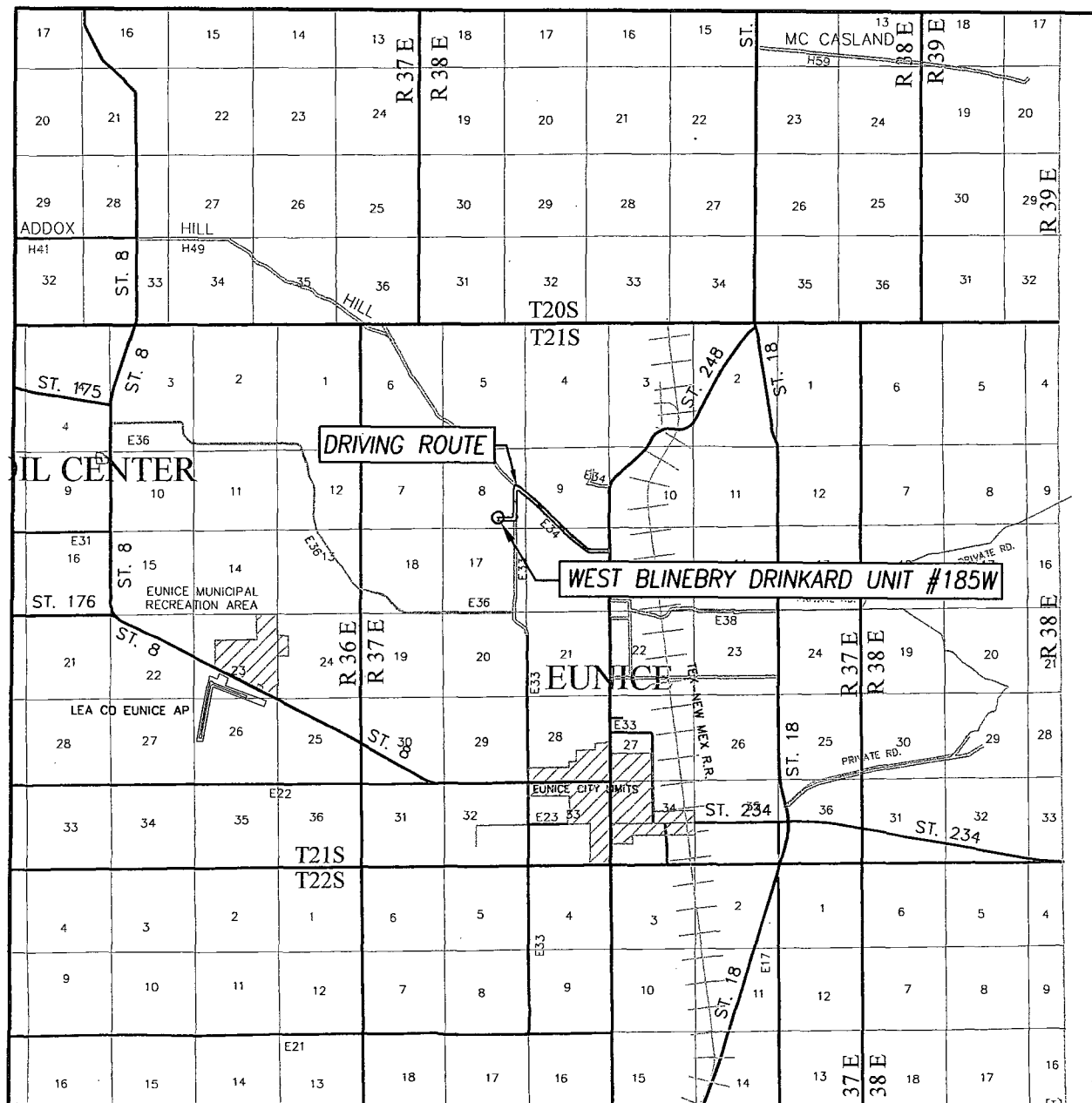
Rel. W.O.:

Sheet 1 of 1



PROVIDING SURVEYING SERVICES
SINCE 1946
JOHN WEST SURVEYING COMPANY
412 N. DAL PASO
HOBBS, N.M. 88240
(575) 393-3117 www.jwsc.biz

VICINITY MAP



SCALE: 1" = 2 MILES

DRIVING ROUTE: SEE LOCATION VERIFICATION MAP

SEC. 8 TWP. 21-S RGE. 37-E

SURVEY N.M.P.M.

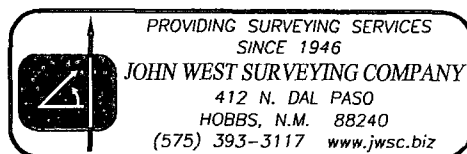
COUNTY LEA STATE NEW MEXICO

DESCRIPTION 695' FSL & 1760' FEL

ELEVATION 3503'

OPERATOR APACHE CORPORATION

LEASE WEST BLINEBRY DRINKARD UNIT



NORTH



CONTOUR INTERVAL:
EUNICE, N.M. - 10'

DIRECTIONS TO LOCATION

FROM THE INTERSECTION OF ST. HIGHWAY 248 AND CO. RD. E-34 (HILL RD.) GO WEST-NORTHWEST APPROX. 1.4 MILES; TURN LEFT AND GO SOUTH ON TURNER ROAD. (E-33) APPROX. 0.4 MILES; TURN RIGHT AND GO WEST APPROX. 0.2 MILES; TO THIS STAKED LOCATION IS NORTH APPROX. 80 FEET.

LEASE WEST BLINEBRY DRINKARD UNIT

U.S.G.S. TOPOGRAPHIC MAP
EUNICE, N.M.

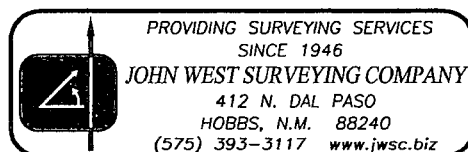


Exhibit # 2

APACHE CORPORATION

West Blinebry Drinkard Unit #185W

695' FSL & 1760' FEL

SEC: 8 T21S R37E

1 MILE RADIUS



POSTED WELL DATA

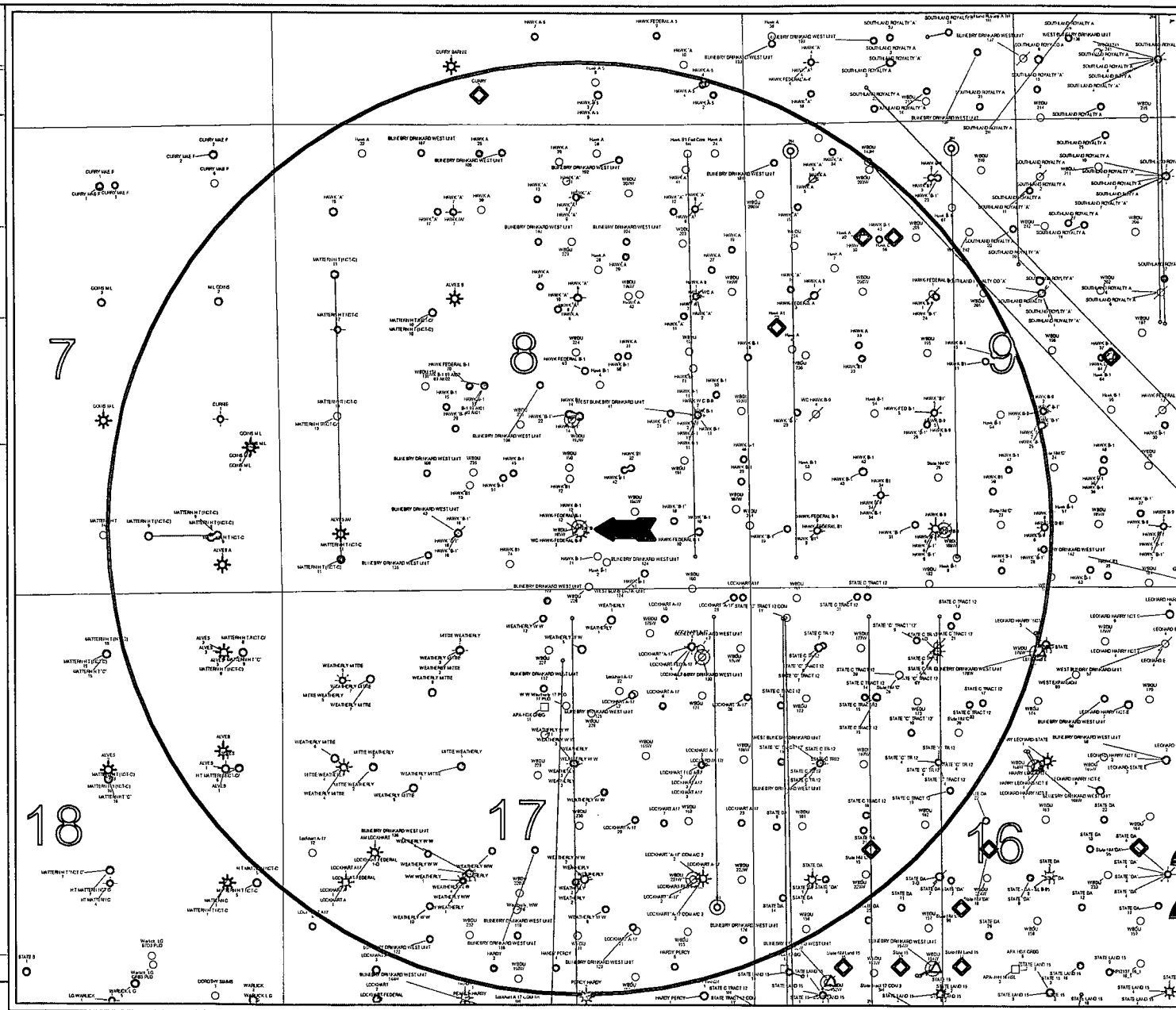
Well Name
Well Number



WELL SYMBOLS

- △ PERMIT DI
- ◊ Abandoned Oil and Gas Well
- ◊ BTD LOCATION
- ⊙ Dry Hole, With Show of Gas
- ⊙ Dry Hole, With Show of Oil & Gas
- ⊙ Dry Hole, With Show of Oil
- ⊙ Dry Hole
- ⊙ Gas Well
- ⊙ Junked
- ⊙ Key Injection well
- Location Only
- Non Apache
- Large Square
- ⊙ Oil & Gas Well
- Oil Well
- Drilling
- ⊙ Plugged and Abandoned
- ⊙ Active Producer
- ⊙ Active Injection
- ⊙ P&A'd Gas Well
- ⊙ New Location
- ⊙ Plugged Oil Well
- ⊙ Plugged Gas Well
- ⊙ Injection Well

April 10, 2014



PETRA 4/10/2014 3:12:52 PM

ACCESS ROAD & FLOW LINE PLAT
WEST BLINEBRY DRINKARD UNIT #185W
EXHIBIT #1

