

DISTRICT I
1625 N. French Dr., Hobbs, NM 88240
Phone: (575) 393-6161 Fax: (575) 393-0720

DISTRICT II
811 S. First St., Artesia, NM 88210
Phone: (575) 748-1283 Fax: (575) 748-9720

DISTRICT III
1000 Rio Brazos Road, Aztec, NM 87410
Phone: (505) 334-6178 Fax: (505) 334-6170

DISTRICT IV
1220 S. St. Francis Dr., Santa Fe, NM 87505
Phone: (505) 476-3460 Fax: (505) 476-3462

State of New Mexico
Energy, Minerals & Natural Resources Department

OIL CONSERVATION DIVISION

1220 South St. Francis Dr.
Santa Fe, New Mexico 87505

HOBBS OGD

MAR 25 2015

RECEIVED

Form C-102

Revised August 1, 2011

Submit one copy to appropriate
District Office

AMENDED REPORT

WELL LOCATION AND ACREAGE DEDICATION PLAT

API Number 30-025-40886	Pool Code 44500	Pool Name Maljamar; Yeso, West
Property Code 39256	Property Name PAN HEAD FEE ✓	Well Number 21H ✓
OGRID No. 229137	Operator Name COG OPERATING, LLC ✓	Elevation 4182

Surface Location

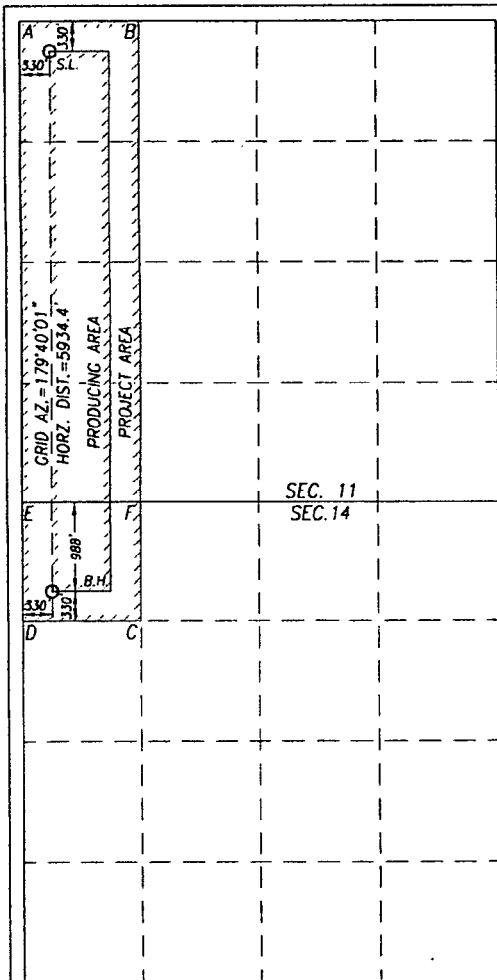
UL or lot No. D	Section 11	Township 17-S	Range 32-E	Lot Idn	Feet from the 330	North/South line NORTH	Feet from the 330	East/West line WEST	County LEA ✓
---------------------------	----------------------	-------------------------	----------------------	---------	-----------------------------	----------------------------------	-----------------------------	-------------------------------	------------------------

Bottom Hole Location If Different From Surface

UL or lot No. D	Section 14	Township 17-S	Range 32-E	Lot Idn	Feet from the 988	North/South line NORTH	Feet from the 330	East/West line WEST	County LEA
---------------------------	----------------------	-------------------------	----------------------	---------	-----------------------------	----------------------------------	-----------------------------	-------------------------------	----------------------

Dedicated Acres 200	Joint or Infill	Consolidation Code	Order No.
-------------------------------	-----------------	--------------------	-----------

NO ALLOWABLE WILL BE ASSIGNED TO THIS COMPLETION UNTIL ALL INTERESTS HAVE BEEN CONSOLIDATED OR A NON-STANDARD UNIT HAS BEEN APPROVED BY THE DIVISION



GEODETIC COORDINATES
NAD 27 NME

SURFACE LOCATION
Y=675378.0 N
X=680940.3 E

LAT.=32.855311° N
LONG.=103.744114° W

BOTTOM HOLE LOCATION

Y=669445.3 N
X=680974.7 E

LAT.=32.838998° N
LONG.=103.744110° W

GEODETIC COORDINATES
NAD 83 NME

SURFACE LOCATION
Y=675442.6 N
X=722118.4 E

LAT.=32.855430° N
LONG.=103.744620° W

BOTTOM HOLE LOCATION

Y=669507.8 N
X=722152.9 E

LAT.=32.839123° N
LONG.=103.744615° W

CORNER COORDINATES TABLE
NAD 27 NMW

A - Y=675706.5 N, X=680608.2 E
B - Y=675712.2 N, X=681927.0 E
C - Y=669118.6 N, X=681964.8 E
D - Y=669113.8 N, X=680646.8 E
E - Y=670433.3 N, X=680638.6 E
F - Y=670432.4 N, X=681956.0 E

CORNER COORDINATES TABLE
NAD 83 NME

A - Y=675771.1 N, X=721786.4 E
B - Y=675776.8 N, X=723105.1 E
C - Y=669183.1 N, X=723143.1 E
D - Y=669178.3 N, X=721825.0 E
E - Y=670497.8 N, X=721816.9 E
F - Y=670496.9 N, X=723134.2 E

OPERATOR CERTIFICATION

I hereby certify that the information herein is true and complete to the best of my knowledge and belief, and that this organization either owns a working interest or unleased mineral interest in the land including the proposed bottom hole location or has a right to drill this well at this location pursuant to a contract with an owner of such mineral or working interest, or to a voluntary pooling agreement or a compulsory pooling order heretofore entered by the division.

Signature: Date: **3-10-15**

Printed Name: **Kelly J. Holly**

E-mail Address: **kholly@concho.com**

SURVEYOR CERTIFICATION

I hereby certify that the well location shown on this plat was plotted from field notes of actual surveys made by me or under my supervision, and that the same is true and correct to the best of my belief.

OCTOBER 11, 2012

Date of Survey: **OCTOBER 11, 2012**
Signature:

Seal of Professional Surveyor:

Certificate Number: **12641**
Surveyor: **Ronald J. Eidson**

LSL REL W.O.: 13.13.0516 JWSC W.O.: 14.13.1154

MAR 31 2015