

HOBBSCO

DISTRICT I  
1625 N. French Dr., Hobbs, NM 88240  
Phone (575) 393-6161 Fax: (575) 393-0720

DISTRICT II  
811 S. First St., Artesia, NM 88210  
Phone (575) 748-1283 Fax: (575) 748-9720

DISTRICT III  
1000 Rio Brazos Rd., Aztec, NM 87410  
Phone (505) 334-6178 Fax: (505) 334-6170

DISTRICT IV  
1220 S. St. Francis Dr., Santa Fe, NM 87505  
Phone (505) 476-3460 Fax: (505) 476-3462

State of New Mexico  
Energy, Minerals and Natural Resources Department

Form C-102  
Revised August 1, 2011

Submit one copy to appropriate  
District Office

APR 09 2015

RECEIVED

CONSERVATION DIVISION  
1220 South St. Francis Dr.  
Santa Fe, New Mexico 87505

WELL LOCATION AND ACREAGE DEDICATION PLAT

☐ AMENDED REPORT

API Number 30-025-42007	Pool Code 97962	Pool Name Wildcat; Bone Spring
Property Code 313441	Property Name Juice BUD State Com	Well Number 4H
OGRID No. 025575	Operator Name YATES PETROLEUM CORPORATION	Elevation 3,673' GR

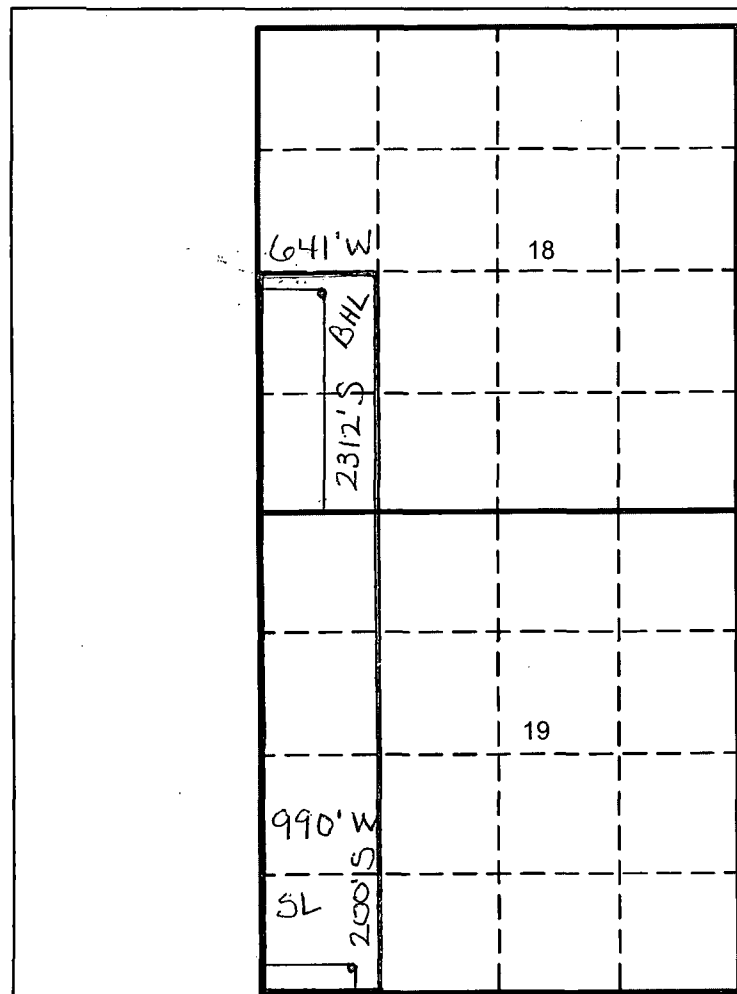
Surface Location

UL or lot No.	Section	Township	Range	Lot Idn	Feet from the	North/South line	Feet from the	East/West line	County
M	19	21S	34E		200	South	990	West	Lea

Bottom Hole Location If Different From Surface

UL or lot No.	Section	Township	Range	Lot Idn	Feet from the	North/South line	Feet from the	East/West line	County
L	18	21S	34E		2312	South	641	West	Lea
Dedicated Acres 240	Joint or Infill	Consolidation Code	Order No.						

NO ALLOWABLE WILL BE ASSIGNED TO THIS COMPLETION UNTIL ALL INTERESTS HAVE BEEN CONSOLIDATED  
OR A NON-STANDARD UNIT HAS BEEN APPROVED BY THE DIVISION



OPERATOR CERTIFICATION

I hereby certify that the information contained herein is true and complete to the best of my knowledge and belief, and that this organization either owns a working interest or unleased mineral interest in the land including the proposed bottom hole location or has a right to drill this well at this location pursuant to a contract with an owner of such a mineral or working interest, or to a voluntary pooling agreement or a compulsory pooling order heretofore entered by the division.

*Laura Watts*  
Signature Date 4-7-15

Laura Watts

Printed Name

[laura@yatespetroleum.com](mailto:laura@yatespetroleum.com)

Email Address

SURVEYOR CERTIFICATION

I hereby certify that the well location shown on this plat was plotted from field notes of actual surveys made by me or under my supervision and that the same is true and correct to the best of my belief.

Date Surveyed

Signature & Seal of  
Professional Surveyor

0' 1000' 2000' 3000' 4000'

SCALE: 1" = 2000'

WO Num.:

APP 27 2015