

District I  
1625 N. French Dr., Hobbs, NM 88240  
Phone: (575) 393-6161 Fax: (575) 393-0720  
District II  
811 S. First St., Artesia, NM 88210  
Phone: (575) 748-1283 Fax: (575) 748-9720  
District III  
1000 Rio Brazos Road, Aztec, NM 87410  
Phone: (505) 334-6178 Fax: (505) 334-6179  
District IV  
1220 S. St. Francis Dr., Santa Fe, NM 87505  
Phone: (505) 479-3460 Fax: (505) 476-3462

State of New Mexico  
Energy, Minerals & Natural Resources Department  
OIL CONSERVATION DIVISION  
1220 South St. Francis Dr.  
Santa Fe, NM 87505

Form C-102  
Revised August 1, 2011  
Submit one copy to appropriate  
District Office  
☐ AMENDED REPORT

WELL LOCATION AND ACREAGE DEDICATION

<sup>1</sup> API Number <b>30-025-42528</b>	<sup>2</sup> Pool Code <b>41440</b>	<sup>3</sup> Pool Name <b>Lusk; Bone Spring</b>
<sup>4</sup> Property Code <b>39849</b>	<sup>5</sup> Property Name <b>TAYLOR DRAW 7 FED</b>	
<sup>6</sup> Well Number <b>3H</b>	<sup>7</sup> Operator Name <b>DEVON ENERGY PRODUCTION COMPANY, L.P.</b>	
<sup>8</sup> OGRID No. <b>6137</b>	<sup>9</sup> Elevation <b>3618.3</b>	

<sup>10</sup> Surface Location

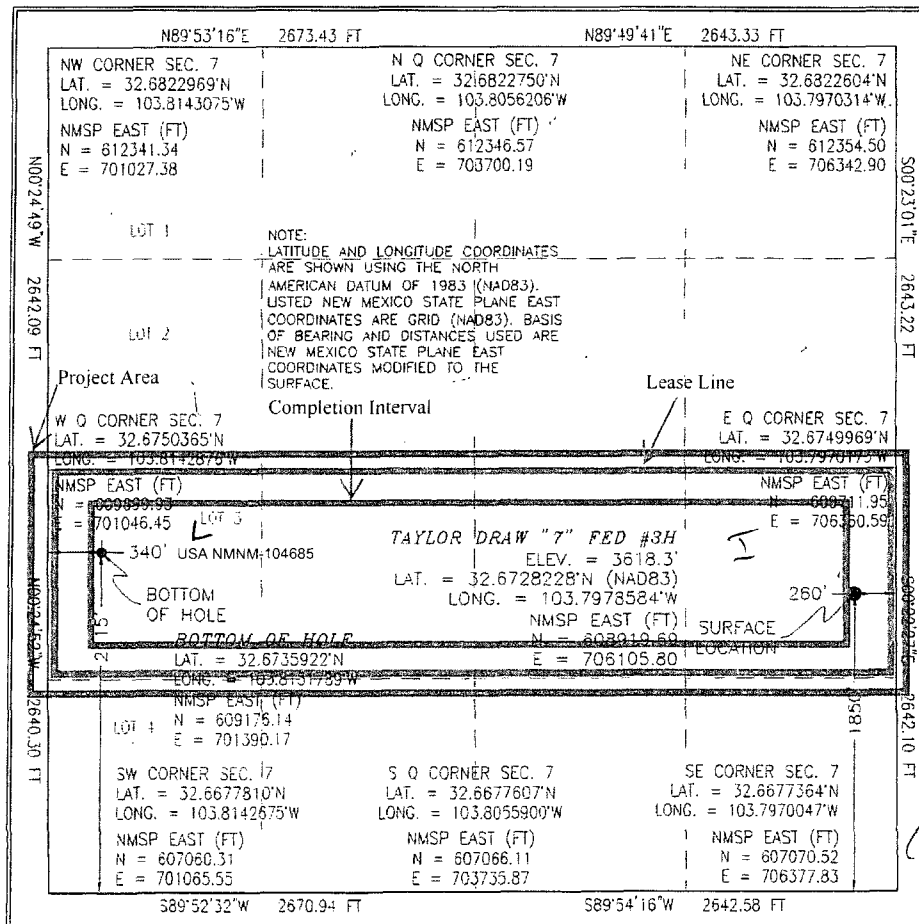
U/L or lot no.	Section	Township	Range	Lot Idn	Feet from the	North/South line	Feet from the	East/West line	County
<b>I</b>	<b>7</b>	<b>19 S</b>	<b>32 E</b>		<b>1850</b>	<b>SOUTH</b>	<b>260</b>	<b>EAST</b>	<b>LEA</b>

<sup>11</sup> Bottom Hole Location If Different From Surface

U/L or lot no.	Section	Township	Range	Lot Idn	Feet from the	North/South line	Feet from the	East/West line	County
<b>3 L</b>	<b>7</b>	<b>19 S</b>	<b>32 E</b>		<b>2115</b>	<b>SOUTH</b>	<b>340</b>	<b>WEST</b>	<b>LEA</b>

<sup>12</sup> Dedicated Acres	<sup>13</sup> Joint or Infill	<sup>14</sup> Consolidation Code	<sup>15</sup> Order No.
<b>160.34</b>			

No allowable will be assigned to this completion until all interests have been consolidated or a non-standard unit has been approved by the division.



**<sup>17</sup> OPERATOR CERTIFICATION**  
I hereby certify that the information contained herein is true and complete to the best of my knowledge and belief, and that this organization either owns a working interest or unleased mineral interest in the land including the proposed bottom hole location or has a right to drill this well at this location pursuant to a contract with an owner of such a mineral or working interest, or to a voluntary pooling agreement or a compulsory pooling order heretofore entered by the division.

*Linda Good* 7/9/2014  
Signature Date

Linda Good  
Printed Name

*linda.good@dmv.com*  
E-mail Address

**<sup>18</sup> SURVEYOR CERTIFICATION**  
I hereby certify that the well location shown on this plat was plotted from field notes of actual surveys made by me or under my supervision, and that the same is true and correct to the best of my belief.

FEBRUARY 24, 2014  
Date of Survey

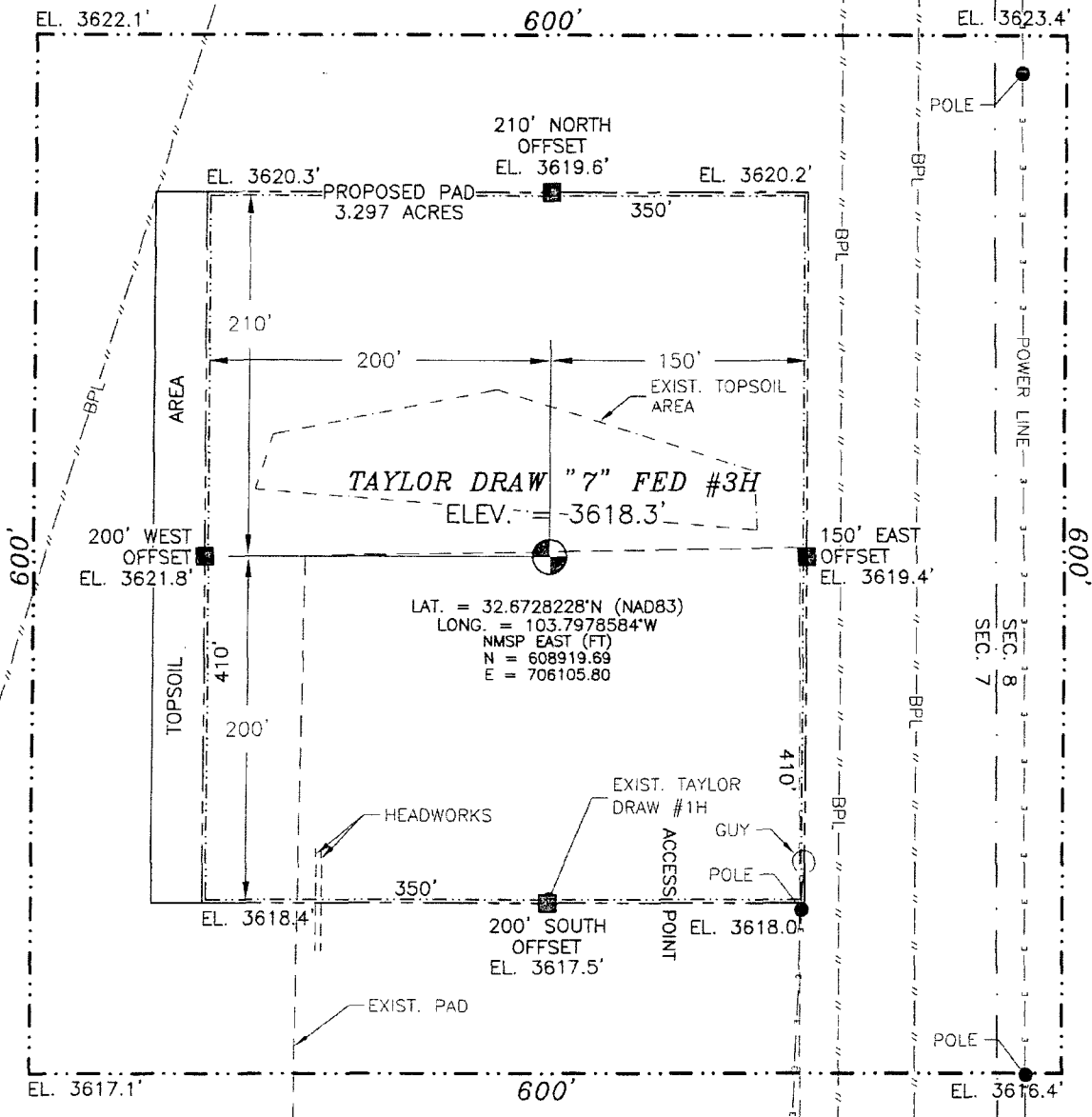
*[Signature]*  
Signature and Seal of Professional Surveyor

Certificate Number: **ELIUNO F. JARAMILLO, PLS 12797**  
SURVEY NO. 2698

APR 28 2015

SECTION 7, TOWNSHIP 19 SOUTH, RANGE 32 EAST, N.M.P.M.  
LEA COUNTY, STATE OF NEW MEXICO  
**SITE MAP**

NOTE: LATITUDE AND LONGITUDE COORDINATES ARE SHOWN USING THE NORTH AMERICAN DATUM OF 1983 (NAD83). LISTED NEW MEXICO STATE PLANE EAST COORDINATES ARE GRID (NAD83). BASIS OF BEARING AND DISTANCES USED ARE NEW MEXICO STATE PLANE EAST COORDINATES MODIFIED TO THE SURFACE.



0 10 50 100 200

SCALE 1" = 100'

**DIRECTIONS TO LOCATION**

FROM THE INTERSECTION OF CR L126 (MALJAMAR ROAD) AND CR 248 (LUSK PLANT ROAD) GO NORTH ON CR L126 1.5 MILES, TURN LEFT ON CALICHE ROAD OVER CATTLE GUARD ABOUT 325' TO ROAD INTERSECTION. GO NORTH ABOUT 300' TO EXISTING PAD FOR TAYLOR DRAW '7' FED #1H. SITE IS JUST NORTH OF PAD.

DEVON ENERGY PRODUCTION COMPANY, L.P.

**TAYLOR DRAW "7" FED #3H**

LOCATED 1850 FT. FROM THE SOUTH LINE  
AND 260 FT. FROM THE EAST LINE OF

SECTION 7, TOWNSHIP 19 SOUTH,  
RANGE 32 EAST, N.M.P.M.

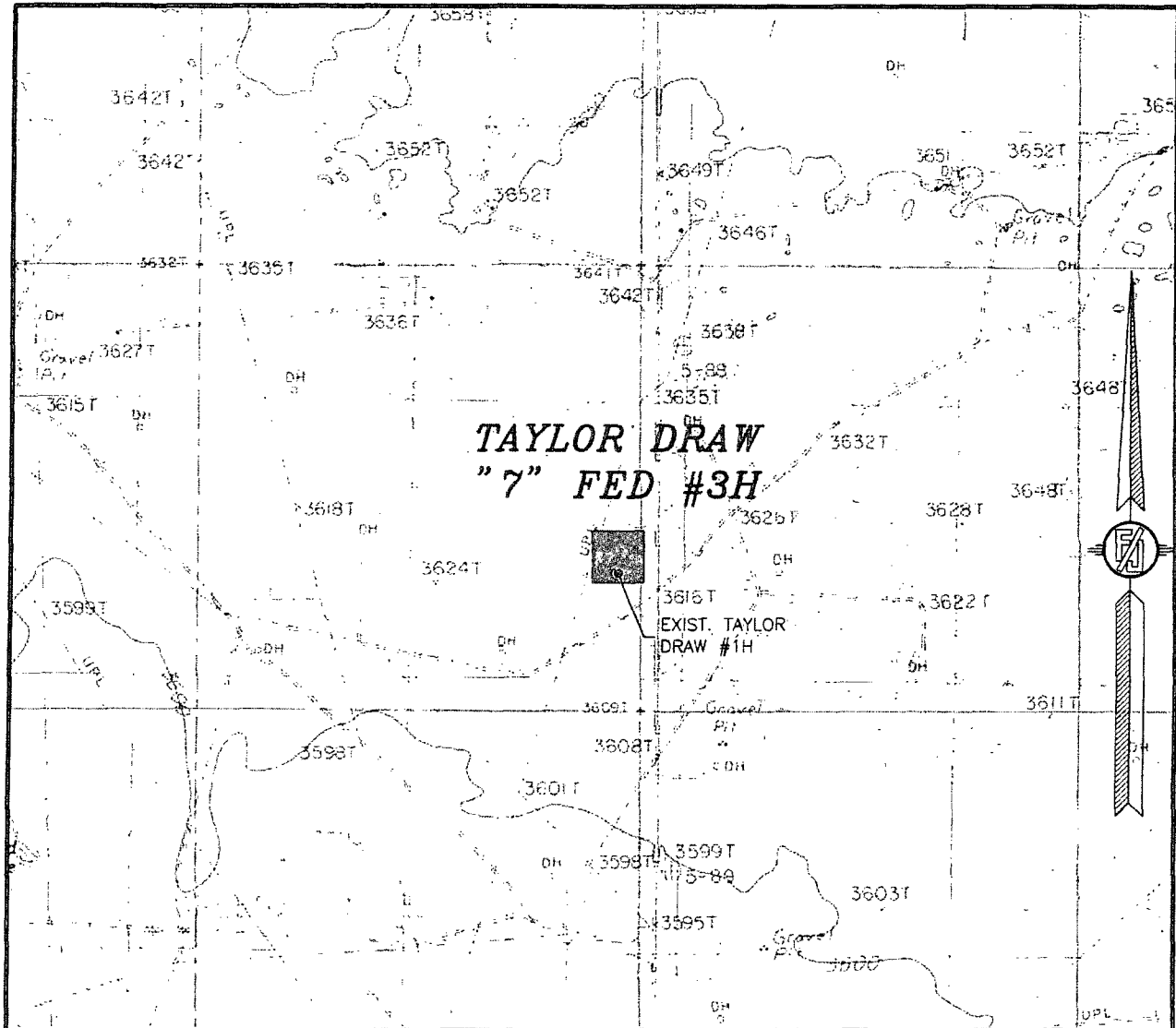
LEA COUNTY, STATE OF NEW MEXICO

FEBRUARY 24, 2014

SURVEY NO. 2698

MADRON SURVEYING, INC. 301 SOUTH CANAL CARLSBAD, NEW MEXICO  
(575) 234-3341

SECTION 7, TOWNSHIP 19 SOUTH, RANGE 32 EAST, N.M.P.M.  
LEA COUNTY, STATE OF NEW MEXICO  
LOCATION VERIFICATION MAP



USGS QUAD MAP:  
GREENWOOD LAKE

NOT TO SCALE

DEVON ENERGY PRODUCTION COMPANY, L.P.

**TAYLOR DRAW "7" FED #3H**

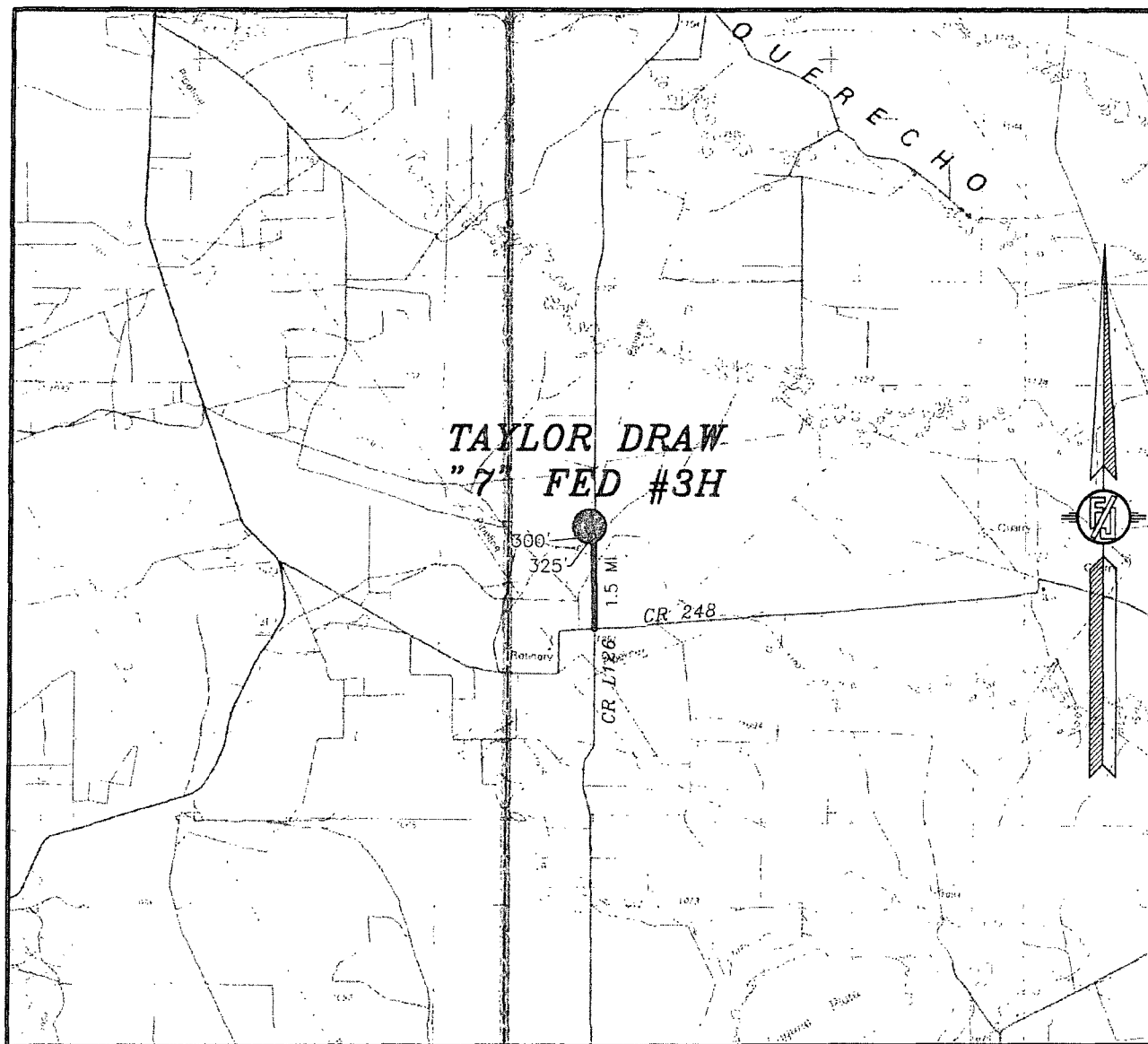
LOCATED 1850 FT. FROM THE SOUTH LINE  
AND 260 FT. FROM THE EAST LINE OF  
SECTION 7, TOWNSHIP 19 SOUTH,  
RANGE 32 EAST, N.M.P.M.  
LEA COUNTY, STATE OF NEW MEXICO

FEBRUARY 24, 2014

SURVEY NO. 2698

MADRON SURVEYING, INC. 301 SOUTH CANAL (575) 234-3341 CARLSBAD, NEW MEXICO

SECTION 7, TOWNSHIP 19 SOUTH, RANGE 32 EAST, N.M.P.M.  
LEA COUNTY, STATE OF NEW MEXICO  
VICINITY MAP



DEVON ENERGY PRODUCTION COMPANY, L.P.

**TAYLOR DRAW "7" FED #3H**

LOCATED 1850 FT. FROM THE SOUTH LINE  
AND 260 FT. FROM THE EAST LINE OF  
SECTION 7, TOWNSHIP 19 SOUTH,  
RANGE 32 EAST, N.M.P.M.  
LEA COUNTY, STATE OF NEW MEXICO

**DIRECTIONS TO LOCATION**

FROM THE INTERSECTION OF CR L126 (MALJAMAR ROAD) AND CR 248 (LUSK PLANT ROAD) GO NORTH ON CR L126 1.5 MILES, TURN LEFT ON CALICHE ROAD OVER CATTLE GUARD ABOUT 325' TO ROAD INTERSECTION. GO NORTH ABOUT 300' TO EXISTING PAD FOR TAYLOR DRAW "7" FED #1H. SITE IS JUST NORTH OF PAD.

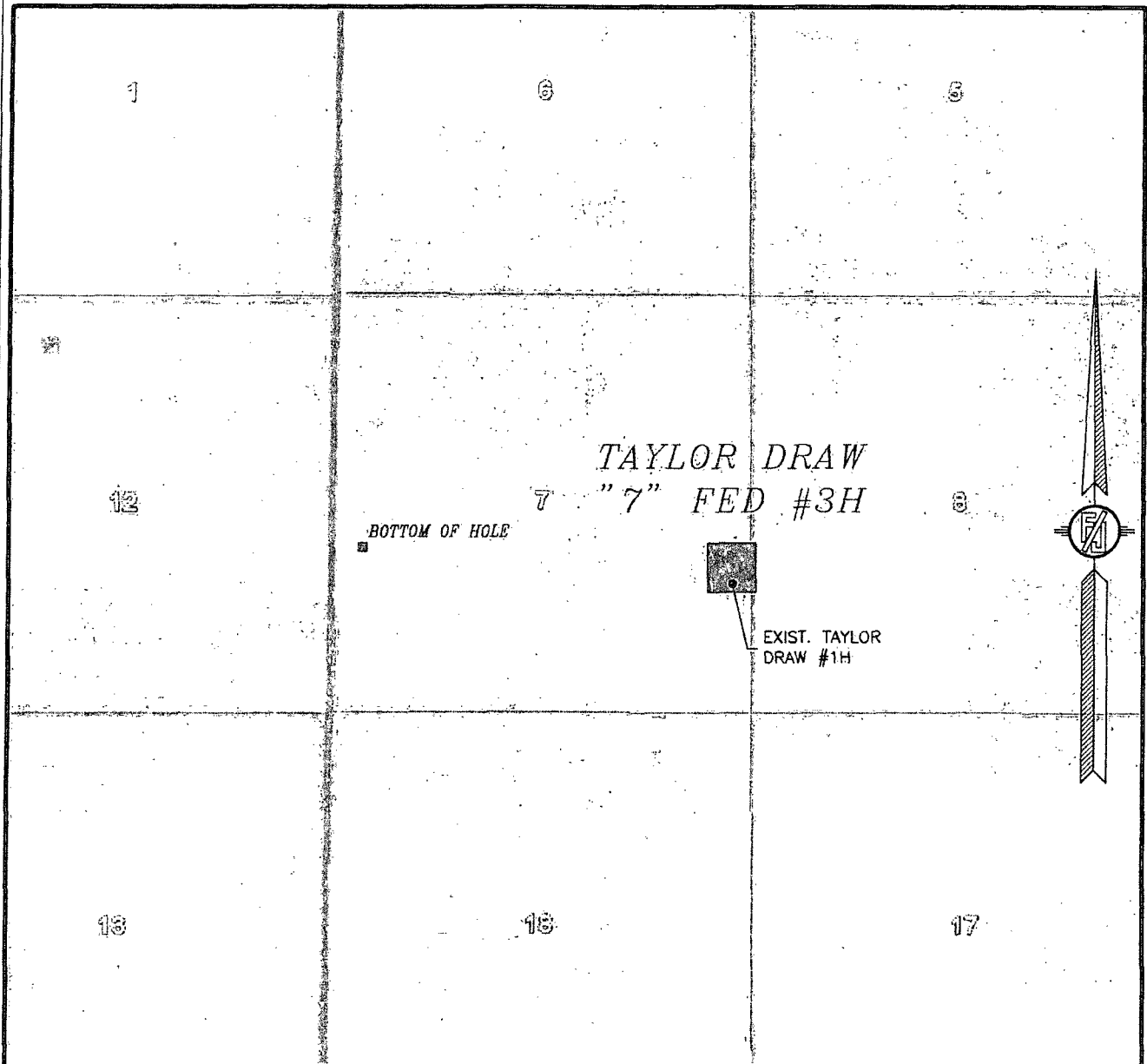
FEBRUARY 24, 2014

SURVEY NO. 2698

MADRON SURVEYING, INC. 301 SOUTH CANAL (575) 234-3341

CARLSBAD, NEW MEXICO

SECTION 7, TOWNSHIP 19 SOUTH, RANGE 32 EAST, N.M.P.M.  
LEA COUNTY, STATE OF NEW MEXICO  
AERIAL PHOTO



NOT TO SCALE  
AERIAL PHOTO:  
GOOGLE EARTH  
MARCH 2012

DEVON ENERGY PRODUCTION COMPANY, L.P.

**TAYLOR DRAW "7" FED #3H**

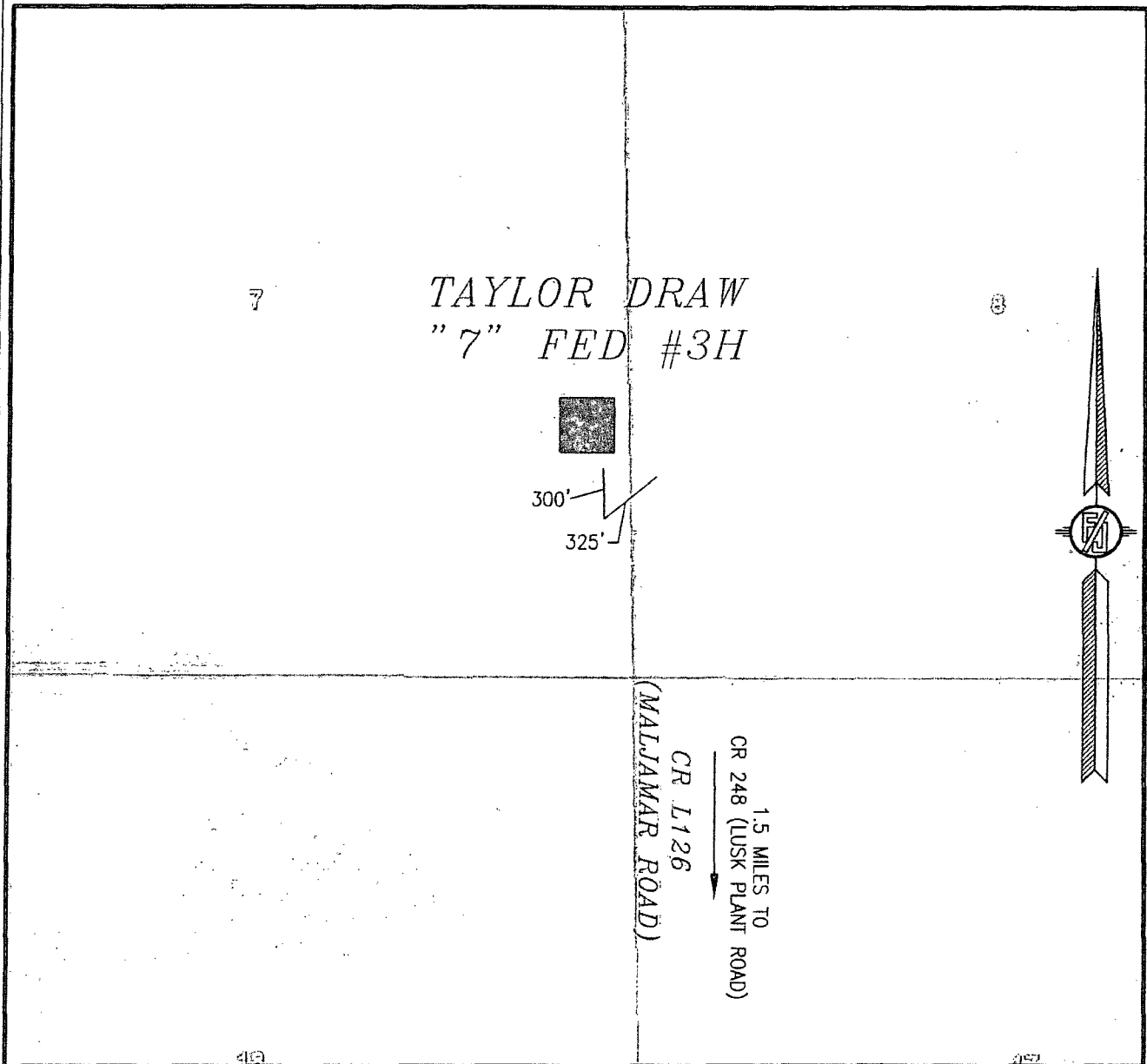
LOCATED 1850 FT. FROM THE SOUTH LINE  
AND 260 FT. FROM THE EAST LINE OF  
SECTION 7, TOWNSHIP 19 SOUTH,  
RANGE 32 EAST, N.M.P.M.  
LEA COUNTY, STATE OF NEW MEXICO

FEBRUARY 24, 2014

SURVEY NO. 2698

MADRON SURVEYING, INC. 301 SOUTH CANAL (575) 234-3341 CARLSBAD, NEW MEXICO

SECTION 7, TOWNSHIP 19 SOUTH, RANGE 32 EAST, N.M.P.M.  
LEA COUNTY, STATE OF NEW MEXICO  
ACCESS AERIAL ROUTE MAP



NOT TO SCALE  
AERIAL PHOTO:  
GOOGLE EARTH  
MARCH 2012

DEVON ENERGY PRODUCTION COMPANY, L.P.

**TAYLOR DRAW "7" FED #3H**

LOCATED 1850 FT. FROM THE SOUTH LINE  
AND 260 FT. FROM THE EAST LINE OF  
SECTION 7, TOWNSHIP 19 SOUTH,  
RANGE 32 EAST, N.M.P.M.  
LEA COUNTY, STATE OF NEW MEXICO

FEBRUARY 24, 2014

SURVEY NO. 2698

MADRON SURVEYING, INC. 301 SOUTH CANAL (575) 234-3341 CARLSBAD, NEW MEXICO

