

District I
1625 N. French Dr., Hobbs, NM 88240
Phone: (575) 393-6161 Fax: (575) 393-0720
District II
311 S. First St., Artesia, NM 88210
Phone: (575) 748-1283 Fax: (575) 748-9720
District III
1000 Rio Brazos Road, Aztec, NM 87410
Phone: (505) 334-6178 Fax: (505) 334-6170
District IV
1220 S. St. Francis Dr., Santa Fe, NM 87505
Phone: (505) 476-3460 Fax: (505) 476-3462

State of New Mexico
Energy, Minerals & Natural Resources Department
OIL CONSERVATION DIVISION
1220 South St. Francis Dr.
Santa Fe, NM 87505

Form C-102
Revised August 1, 2011
Submit one copy to appropriate
District Office
☐ AMENDED REPORT

WELL LOCATION AND ACREAGE DEDICATION PLAT

¹ API Number 30-025-42529	² Pool Code 41440	³ Pool Name Lusk; Bone Spring
⁴ Property Code 313577	⁵ Property Name TAYLOR DRAW 7 FED COM	⁶ Well Number 4H
⁷ OGRID No. 6137	⁸ Operator Name DEVON ENERGY PRODUCTION COMPANY, L.P.	⁹ Elevation 3614.6

¹⁰ Surface Location

UL or lot no.	Section	Township	Range	Lot Idn	Feet from the	North/South line	Feet from the	East/West line	County
P	7	19 S	32 E		1285	SOUTH	345	EAST	LEA

¹¹ Bottom Hole Location If Different From Surface

UL or lot no.	Section	Township	Range	Lot Idn	Feet from the	North/South line	Feet from the	East/West line	County
4	7	19 S	32 E		760	SOUTH	340	WEST	LEA

¹² Dedicated Acres	¹³ Joint or Infill	¹⁴ Consolidation Code	¹⁵ Order No.
160.81			

No allowable will be assigned to this completion until all interests have been consolidated or a non-standard unit has been approved by the division.

<p>N89°53'16"E 2673.43 FT</p> <p>NW CORNER SEC. 7 LAT. = 32.6822969°N LONG. = 103.8143075°W NMSP EAST (FT) N = 612341.34 E = 701027.38</p> <p>LOT 1</p>		<p>N 0 CORNER SEC. 7 LAT. = 32.6822750°N LONG. = 103.8056206°W NMSP EAST (FT) N = 612346.57 E = 703700.19</p>		<p>N89°49'41"E 2643.33 FT</p> <p>NE CORNER SEC. 7 LAT. = 32.6822604°N LONG. = 103.7970314°W NMSP EAST (FT) N = 612354.50 E = 706342.90</p>	
<p>NOTE: LATITUDE AND LONGITUDE COORDINATES ARE SHOWN USING THE NORTH AMERICAN DATUM OF 1983 (NAD83). LISTED NEW MEXICO STATE PLANE EAST COORDINATES ARE GRID (NAD83). BASIS OF BEARING AND DISTANCES USED ARE NEW MEXICO STATE PLANE EAST COORDINATES MODIFIED TO THE SURFACE.</p>		<p>LOT 2</p>		<p>W 0 CORNER SEC. 7 LAT. = 32.6750365°N LONG. = 103.8142876°W NMSP EAST (FT) N = 609699.93 E = 701046.45</p> <p>LOT 3</p>	
<p>W 0 CORNER SEC. 7 LAT. = 32.6750365°N LONG. = 103.8142876°W NMSP EAST (FT) N = 609699.93 E = 701046.45</p>		<p>TAYLOR DRAW "7" FED COM 4H ELEV. = 3614.6' LAT. = 32.6712709°N (NAD83) LONG. = 103.7981318°W NMSP EAST (FT) N = 608354.65 E = 706024.50</p>		<p>E 0 CORNER SEC. 7 LAT. = 32.6749969°N LONG. = 103.7970173°W NMSP EAST (FT) N = 609711.95 E = 706360.59</p>	
<p>BOTTOM OF HOLE LAT. = 32.6698669°N LONG. = 103.8131686°W NMSP EAST (FT) N = 607820.86 E = 701399.97</p>		<p>USA NMNM-104685</p>		<p>USA NMNM-025779A</p>	
<p>340' SW CORNER SEC. 7 LAT. = 32.6677810°N LONG. = 103.8142675°W NMSP EAST (FT) N = 607000.3 E = 701065.55</p>		<p>S 0 CORNER SEC. 7 LAT. = 32.6677607°N LONG. = 103.8055900°W NMSP EAST (FT) N = 607000.4 E = 703735.87</p>		<p>SE CORNER SEC. 7 LAT. = 32.6677364°N LONG. = 103.7970047°W NMSP EAST (FT) N = 607000.5 E = 706377.83</p>	

17 OPERATOR CERTIFICATION
I hereby certify that the information contained herein is true and complete to the best of my knowledge and belief, and that this organization either owns a working interest or unleased mineral interest in the land including the proposed bottom hole location or has a right to drill this well at this location pursuant to a contract with an owner of such a mineral or working interest, or to a voluntary pooling agreement or a compulsory pooling order heretofore entered by the division.

Linda Good 7/9/2014
Signature Date

Linda Good
Printed Name

linda.good@dmv.com
E-mail Address

18 SURVEYOR CERTIFICATION
I hereby certify that the well location shown on this plat was plotted from field notes of actual surveys made by me or under my supervision, and that the same is true and correct to the best of my belief.

JUNE 25, 2014
Date of Survey

[Signature]
Signature and Seal of Professional Surveyor

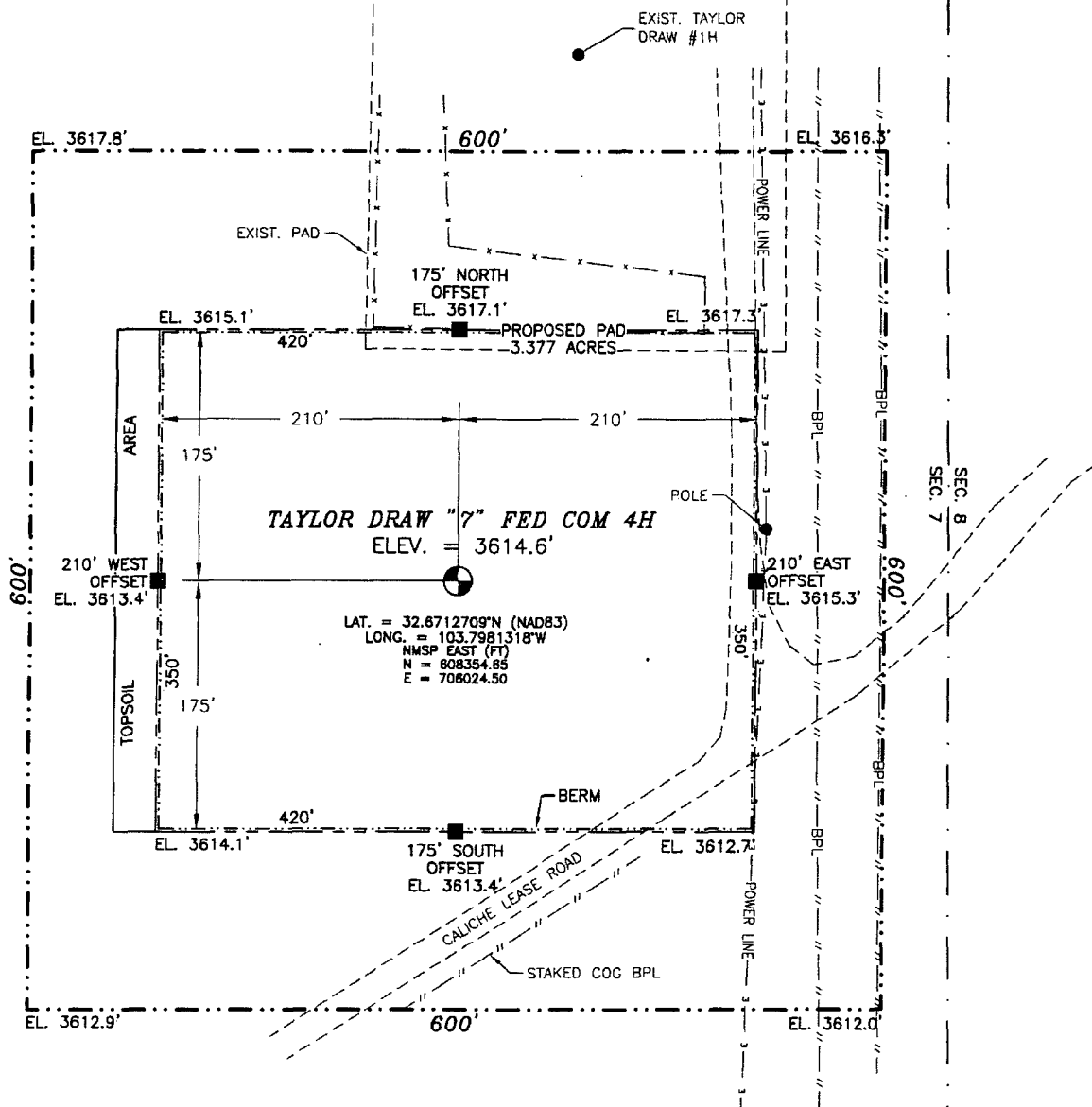
Certificate Number: FILMONT F. JARAMILLO, PLS 12797
SURVEY NO. 2699A

APR 28 2015

SECTION 7, TOWNSHIP 19 SOUTH, RANGE 32 EAST, N.M.P.M.
LEA COUNTY, STATE OF NEW MEXICO

SITE MAP

NOTE: LATITUDE AND LONGITUDE COORDINATES ARE SHOWN USING THE NORTH AMERICAN DATUM OF 1983 (NAD83). LISTED NEW MEXICO STATE PLANE EAST COORDINATES ARE GRID (NAD83). BASIS OF BEARING AND DISTANCES USED ARE NEW MEXICO STATE PLANE EAST COORDINATES MODIFIED TO THE SURFACE



0 12 60 120 240

SCALE 1" = 120'

DIRECTIONS TO LOCATION

FROM THE INTERSECTION OF CR L126 (MALJAMAR ROAD) AND CR 248 (LUSK PLANT ROAD) GO NORTH ON CR L126 1.5 MILES, TURN LEFT ON CALICHE ROAD OVER CATTLE GUARD ABOUT 325' TO ROAD INTERSECTION, BEING SOUTHEAST CORNER OF PAD, WELL IS NORTHWEST.

DEVON ENERGY PRODUCTION COMPANY, L.P.

TAYLOR DRAW "7" FED COM 4H

LOCATED 1285 FT. FROM THE SOUTH LINE
AND 345 FT. FROM THE EAST LINE OF

SECTION 7, TOWNSHIP 19 SOUTH,

RANGE 32 EAST, N.M.P.M.

LEA COUNTY, STATE OF NEW MEXICO

JUNE 25, 2014

SURVEY NO. 2699A

MADRON SURVEYING, INC.

301 SOUTH CANAL
(575) 234-3341

CARLSBAD, NEW MEXICO

[illegible]

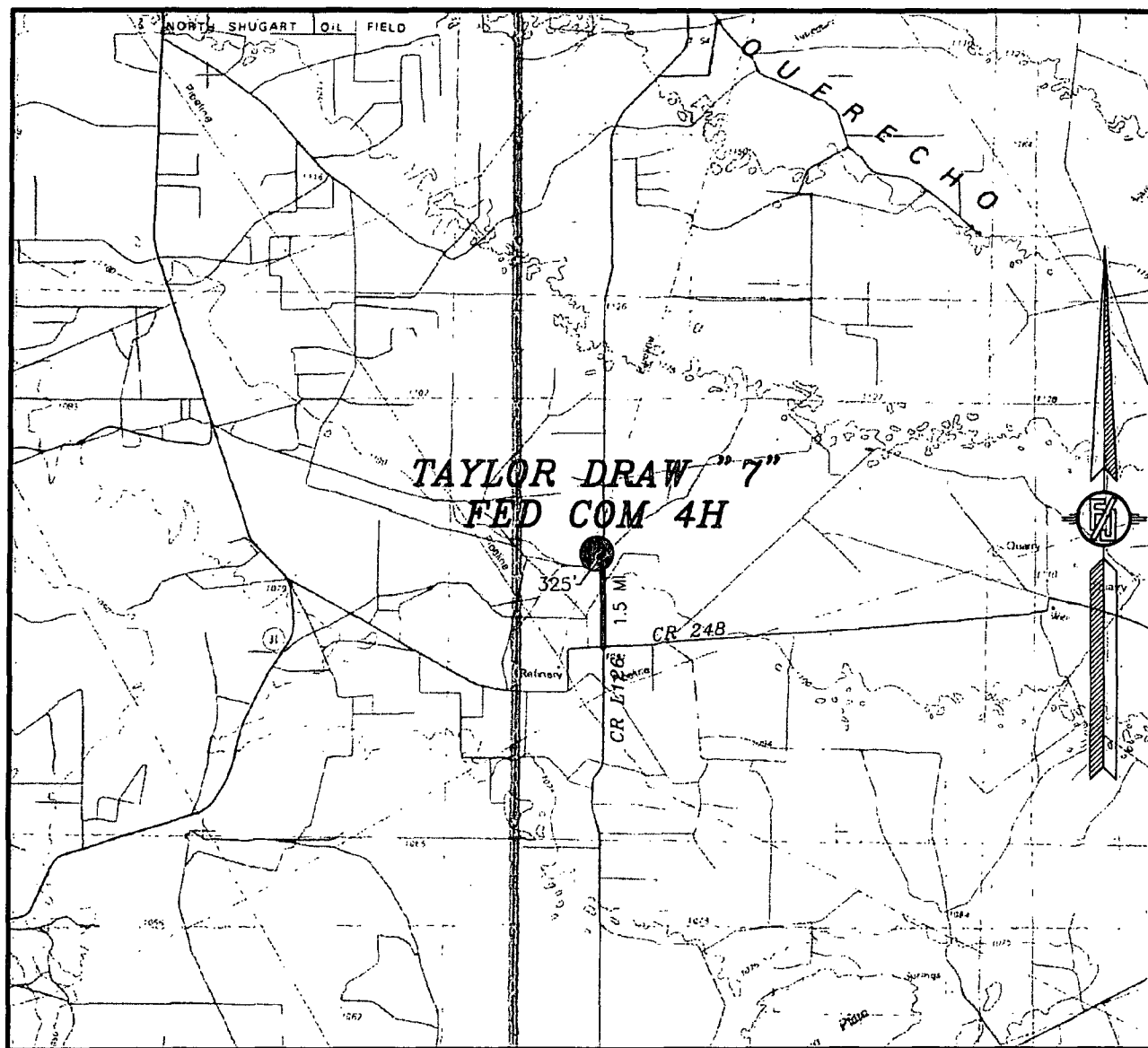
NOT TO SCALE

TAYLOR DRAW "7" FED COM 4H
LOCATED 1285 FT. FROM THE SOUTH LINE
AND 345 FT. FROM THE EAST LINE OF
SECTION 7, TOWNSHIP 19 SOUTH,
RANGE 32 EAST, N.M.P.M.
LEA COUNTY, STATE OF NEW MEXICO

SURVEY NO. 2699A.

MADRON SURVEYING, INC. 301 SOUTH CANAL (575) 234-3341 **CARLSBAD, NEW MEXICO**

SECTION 7, TOWNSHIP 19 SOUTH, RANGE 32 EAST, N.M.P.M.
LEA COUNTY, STATE OF NEW MEXICO
VICINITY MAP



NOT TO SCALE

DEVON ENERGY PRODUCTION COMPANY, L.P.

TAYLOR DRAW "7" FED COM 4H
LOCATED 1285 FT. FROM THE SOUTH LINE
AND 345 FT. FROM THE EAST LINE OF
SECTION 7, TOWNSHIP 19 SOUTH,
RANGE 32 EAST, N.M.P.M.
LEA COUNTY, STATE OF NEW MEXICO

DIRECTIONS TO LOCATION

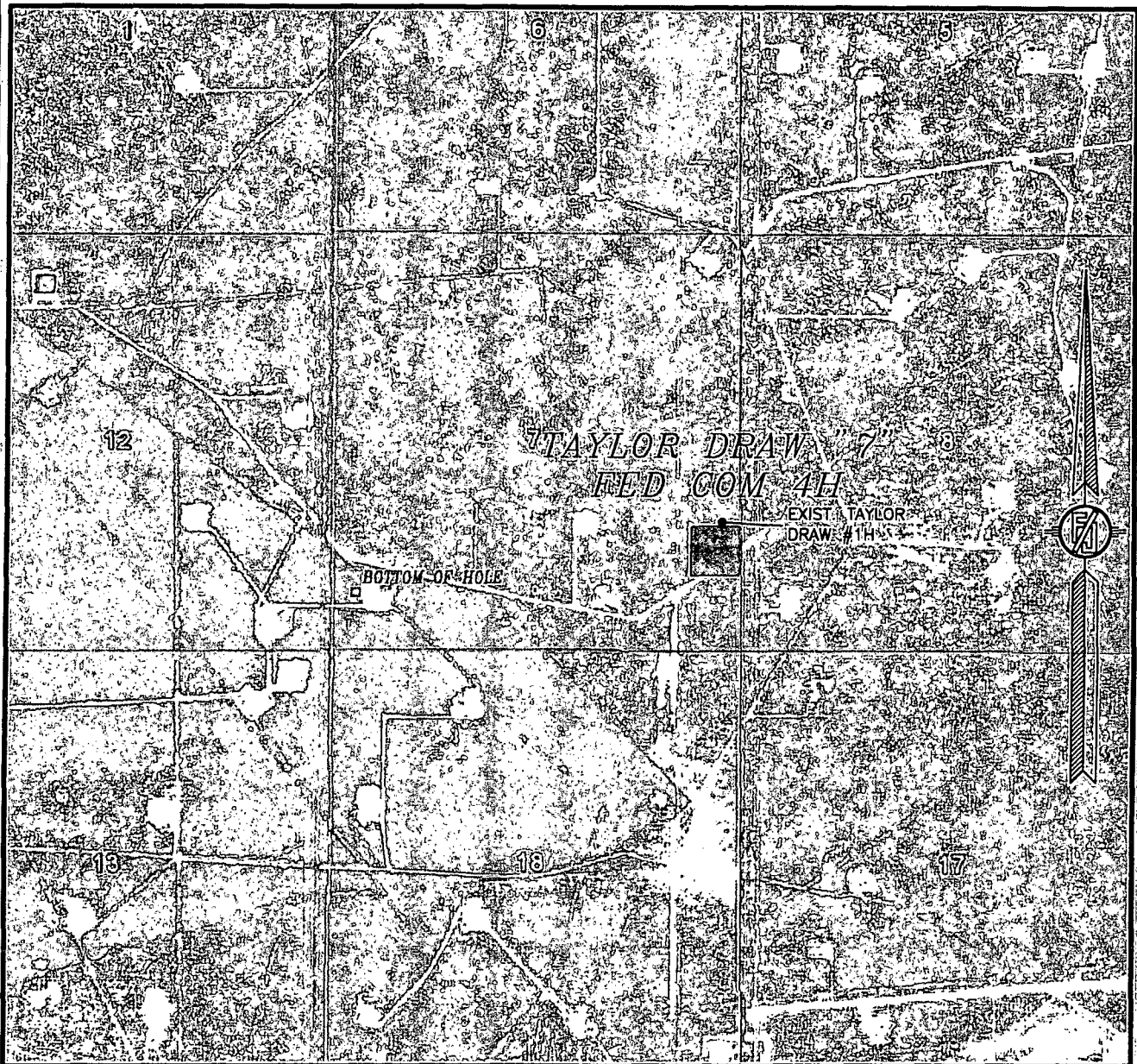
FROM THE INTERSECTION OF CR L126 (MALJAMAR ROAD) AND CR 248 (LUSK PLANT ROAD) GO NORTH ON CR L126 1.5 MILES. TURN LEFT ON CALICHE ROAD OVER CATTLE GUARD ABOUT 325' TO ROAD INTERSECTION, BEING SOUTHEAST CORNER OF PAD, WELL IS NORTHWEST.

JUNE 25, 2014

SURVEY NO. 2699A

MADRON SURVEYING, INC. 301 SOUTH CANAL (575) 234-3341 CARLSBAD, NEW MEXICO

SECTION 7, TOWNSHIP 19 SOUTH, RANGE 32 EAST, N.M.P.M.
LEA COUNTY, STATE OF NEW MEXICO
AERIAL PHOTO



NOT TO SCALE
AERIAL PHOTO:
GOOGLE EARTH
MARCH 2012

DEVON ENERGY PRODUCTION COMPANY, L.P.

TAYLOR DRAW "7" FED COM 4H

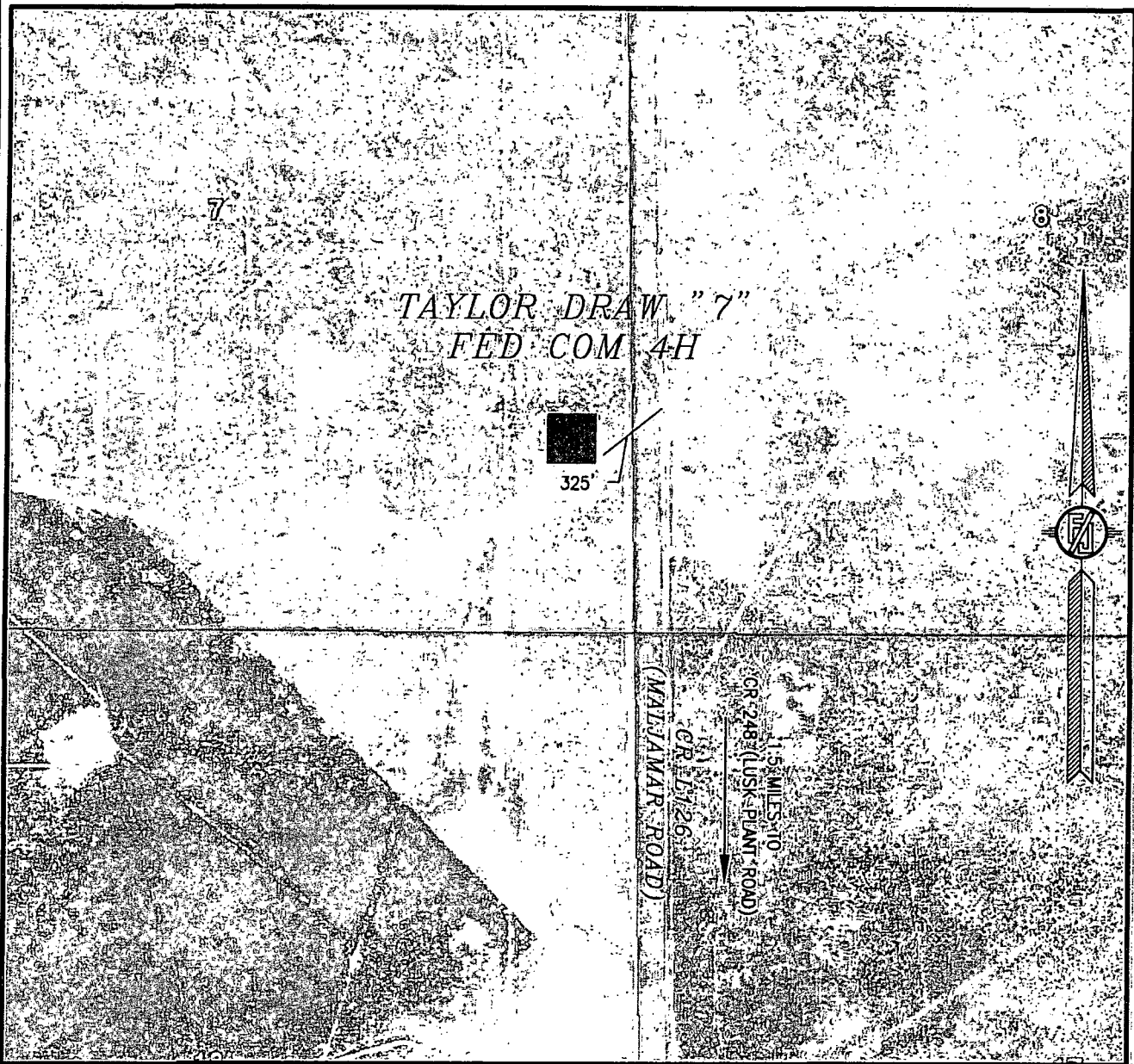
LOCATED 1285 FT. FROM THE SOUTH LINE
AND 345 FT. FROM THE EAST LINE OF
SECTION 7, TOWNSHIP 19 SOUTH,
RANGE 32 EAST, N.M.P.M.
LEA COUNTY, STATE OF NEW MEXICO

JUNE 25, 2014

SURVEY NO. 2699A

MADRON SURVEYING, INC. 301 SOUTH CANAL (575) 234-3341 CARLSBAD, NEW MEXICO

SECTION 7, TOWNSHIP 19 SOUTH, RANGE 32 EAST, N.M.P.M.
LEA COUNTY, STATE OF NEW MEXICO
ACCESS AERIAL ROUTE MAP



NOT TO SCALE
AERIAL PHOTO:
GOOGLE EARTH
MARCH 2012

DEVON ENERGY PRODUCTION COMPANY, L.P.
TAYLOR DRAW "7" FED COM 4H
LOCATED 1285 FT. FROM THE SOUTH LINE
AND 345 FT. FROM THE EAST LINE OF
SECTION 7, TOWNSHIP 19 SOUTH,
RANGE 32 EAST, N.M.P.M.
LEA COUNTY, STATE OF NEW MEXICO

JUNE 25, 2014

SURVEY NO. 2699A

MADRON SURVEYING, INC. 301 SOUTH CANAL CARLSBAD, NEW MEXICO
(575) 234-3341

